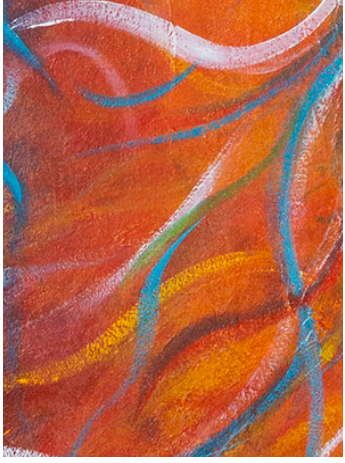




SWIRL



JILL
KRUTICK
FINE
ART



Reflections

THE SWIRL SERIES

STORYTELLING THROUGH TEXTURE

The Swirl series encapsulates all facets of my artistic interests and abilities: music, storytelling, and pop culture. Communicated through texture, movement, and color, the Swirl series captures my childhood doodles, a fantastical interpretation of places my family has visited on eco-adventures, as well as

iconic music, movies, songs, and books that have touched me during my dynamic career as a media analyst/executive and as a mother.

The Swirl series method begins by applying thick layers of oil paint to the canvas and/or carving molding paste into the canvas with grand, eddying gestures. Once applied, the paint is allowed time to dry. Angles and shapes are then inscribed onto the exposed skin of the layers via a palette knife—my favorite instrument for

etching the body of each piece. Colors are meticulously added to accentuate the narrative and build tension in the canvas.

For example, *Confetti*, detailed on front, is celebratory and vibrant. Its lyrical shapes and Santa Fe-inspired colors were chosen to express sunny energy captured by multicolored ribbons that shoot in wisps across the canvas.

As Bruce Helander describes, “Jill Krutick has mastered the essence of lyrical abstraction

when it comes to evaluating the difference between a modestly acceptable picture and a truly engaging and exciting composition that's full of rhythm and blues... Jill Krutick has thoroughly embraced the distinctive flavor of her abstract expressionist-based new works that are connected to fields of vibrant color, whirling movement, and inventive hand-crafted textural surfaces.”



Confetti

2018, Oil on canvas

30 x 48 in (76.2 x 121.9 cm).

Framed: 32 x 50 in (81.3 x 127.0 cm).

*Thumbnail in essay; detail on front cover;
image on contact page*



Koi Fish Pond 1

2018, Acrylic on canvas

12 x 12 in (30.5 x 30.5 cm).

Framed: 14 x 14 in (35.6 x 35.6 cm).

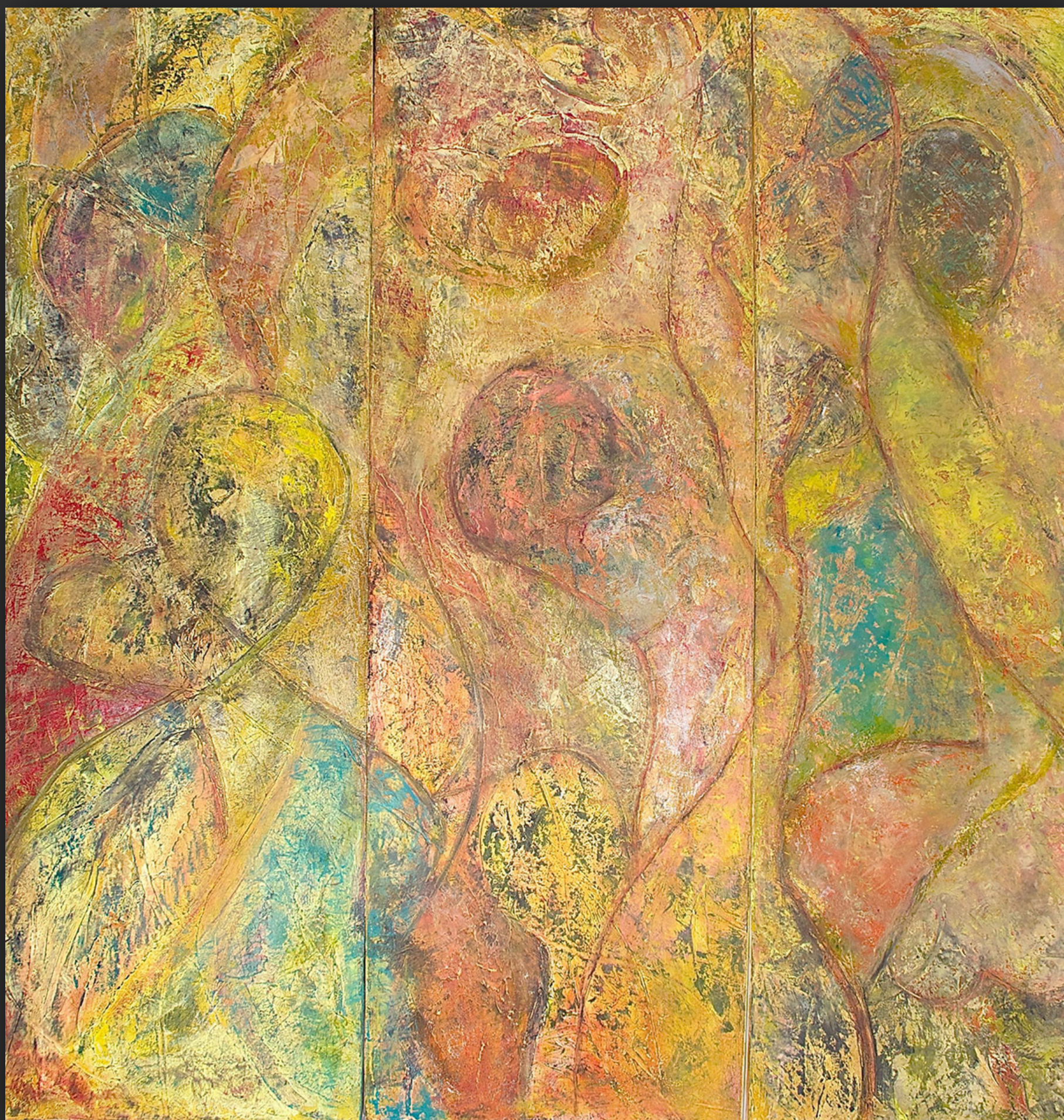


Koi Fish Pond 2

2018, Acrylic on canvas

12 x 12 in (30.5 x 30.5 cm).

Framed: 14 x 14 in (35.6 x 35.6 cm).



Dr. Seuss

2015, Oil on canvas

60 x 60 in (152.4 x 152.4 cm).

Framed: 62 x 62 in (157.5 x 157.5 cm).



Typhoon

2012, Oil on canvas

30 x 24 in (76.2 x 61.0 cm).

Framed: 32 x 26 in (81.3 x 66.0 cm).



Translucence

2019, Acrylic on canvas

60 x 72 in (152.4 x 182.9 cm).

Framed: 62 x 74 in (157.5 x 188.0 cm).



Dance of the Caterpillars

2018, Acrylic on canvas

72 x 120 in (182.88 x 304.8 cm).

2 panels, 72 x 60 in (182.9 x 154.2 cm) each.

Framed: 74 x 62 in (188.0. x 157.5 cm).



Rainbow Fish

2018, Acrylic on canvas

48 x 72 in (121.9 x 182.9 cm).

Framed: 50 x 74 in (127.0 x 188.0 cm).



Windswept

2019, Acrylic on canvas

72 x 60 in (182.9 x 154.2 cm).

Framed: 74 x 62 in (188.0 x 157.5 cm).



Fire Coral Red 4

2017, Acrylic on canvas

12 x 12 in (30.5 x 30.5 cm).

Framed: 14 x 14 in (35.6 x 35.6 cm).



Madame Butterfly

2019, Acrylic on canvas

72 x 60 in (182.9 x 152.4 cm).

Framed: 74 x 62 in (88.0 x 157.5 cm).



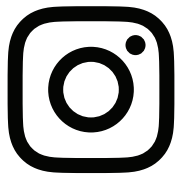
**JILL
KRUTICK
FINE
ART**

425 MOUNT PLEASANT AVE
MAMARONECK, NY 10543

WWW.JILLKRUTICKFINEART.COM
E: JSK@JILLKRUTICKFINEART.COM
T: 914.522.0420



JSKFINEART



@JILLKRUTICKFINEART



IN/JILLKRUTICK



@JILL_KRUTICK