



JILL
KRUTICK
METAMORPHOSIS

YELLOWSTONE ART MUSEUM
BILLINGS, MONTANA



Taking Flight

2019, acrylic on canvas

72 x 60 in (182.9 x 152.4 cm).

Framed: 74 x 62 in (88.0 x 157.5 cm).

Detail on front cover.

“Krutick’s paintings seem to be in a state of ... “creative flux” – they seem to constantly change, and as such seem ever-fresh, offering new aesthetic vistas...”

—DONALD KUSPIT,
ART CRITIC



ESSAY

Jill Krutick: Metamorphosis

BY SUSAN FLOYD BARNETT

CURATOR, YELLOWSTONE ART MUSEUM

NOVEMBER 7, 2019 – JANUARY 5, 2020

OPENING RECEPTION: NOVEMBER 7, 2019

6 – 8 P.M.

Jill Krutick's paintings trace her joyful path of self-discovery and creative exploration. Using texture, form, and color, she suggests the intense beauty and constant flux of nature: galaxies, skies, blossoms, and tides. "Balance remains my main goal," she says. "I strive to capture basic natural elements—earth, water, sun, and sky—contrasting light and dark in order to capture movement through a variety of textures." The interplay of three-dimensional shapes with layered splashes of color creates a sense of motion and interaction, not unlike the interplay of light and form in nature.

Krutick begins many of her compositions by swirling texture onto canvas. The first strokes set the tempo and key. As she layers paint and glazes

over the dimensional foundation, the feeling is that of improvisational jazz, call and response, action and reaction. “You start on a journey,” she says. “Shapes emerge, stories germinate, and concepts develop.”

Krutick’s paintings shimmer with translucent layers, suggesting the complexity and dynamic sublimity of nature. The celebrated art critic, poet, and curator Donald Kuspit writes that “she abstracts the creative flow of nature from its material manifestation.” Her Trout paintings isolate the colorful patterning along the side of a trout, where the camouflage of rock and sky merge. Her ocean-inspired canvases might suggest a horizon line, or dive into the deep blue. The Aurora Borealis

paintings depict infinite distances of swirling color, splattered across canvases large enough to envelop the viewer. These and her light-saturated skies represent both the beauty and terror of the sublime. Krutick says, “I include the Sun in most of my abstract work as I’m captivated by the intimate relationship between light and dark.”

The arts have always played a central role in Krutick’s life. She studied to be a professional pianist through high school, becoming accomplished enough to give a solo performance at Carnegie Hall. In 2011, after making a successful career as a Wall Street analyst and launching her children into the world, she gave herself the gift of time to create. She began

studying at the Art Students League and traded economic security for a state of constant exploration. She combines a childlike joy and playful inquisitiveness with the discipline and focus of a fortune-500 executive. Her work vibrates with sublime beauty and intense energy, reflecting her personal metamorphosis and the interconnected, constantly changing nature of life.

Krutick works full time as an artist at her studio in Westchester, New York. She has had numerous solo exhibitions, most recently at the Coral Springs Museum of Art, Florida. Her work is in more than 100 public and private collections. She has served on boards including the Art Students League, the Recording Academy (NY

Chapter), Hoff-Barthelson Music School, the Wharton Arts Network and National Amusements.



Brook Trout

2019, oil on canvas

18 x 24 inches (45.7 x 61.0 cm).

Framed 20 x 26 inches (61.0 x 66.0 cm).

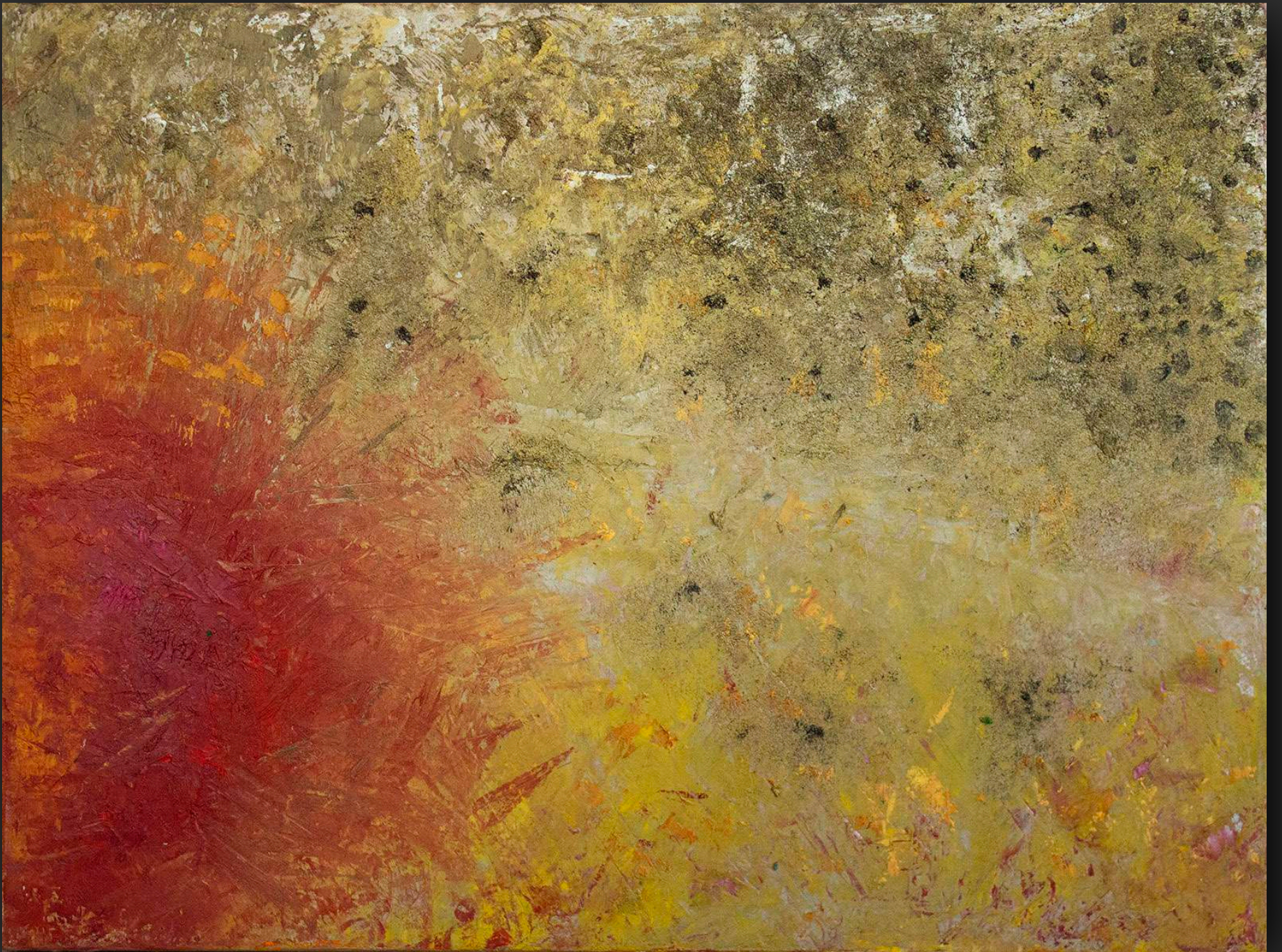


Brown Trout

2019, oil on canvas

18 x 24 inches (45.7 x 61.0 cm).

Framed 20 x 26 inches (61.0 x 66.0 cm).



Cutthroat Trout

2019, oil on canvas

18 x 24 inches (45.7 x 61.0 cm).

Framed 20 x 26 inches (61.0 x 66.0 cm).

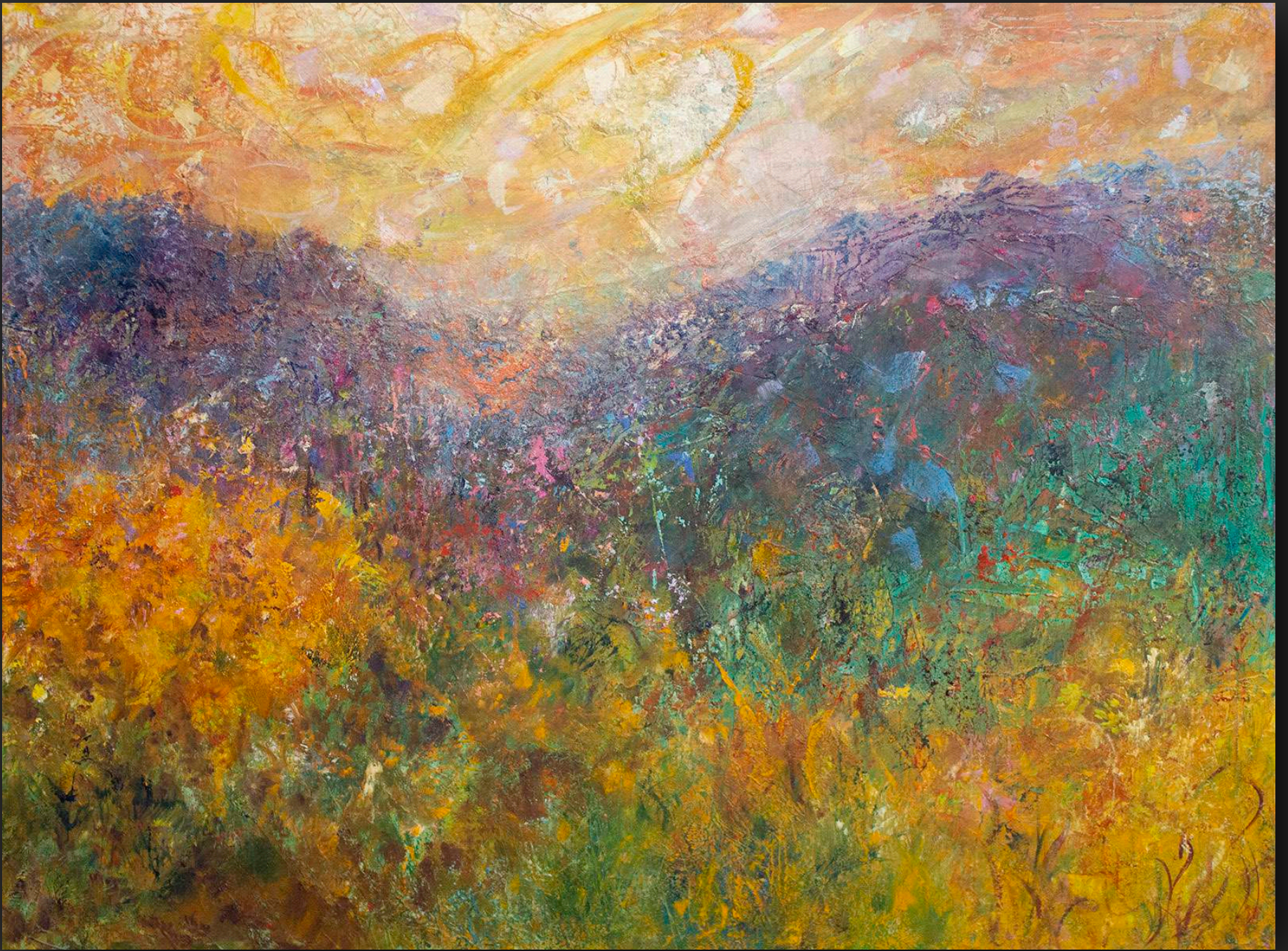


Rainbow Trout

2019, oil on canvas

18 x 24 inches (45.7 x 61.0 cm).

Framed 20 x 26 inches (61.0 x 66.0 cm).



Montana Hills 1

2019, oil on canvas

30 x 40 inches (76.2 x 101.6 cm).

Framed: 32 x 42 inches (81.3 x 106.7 cm).

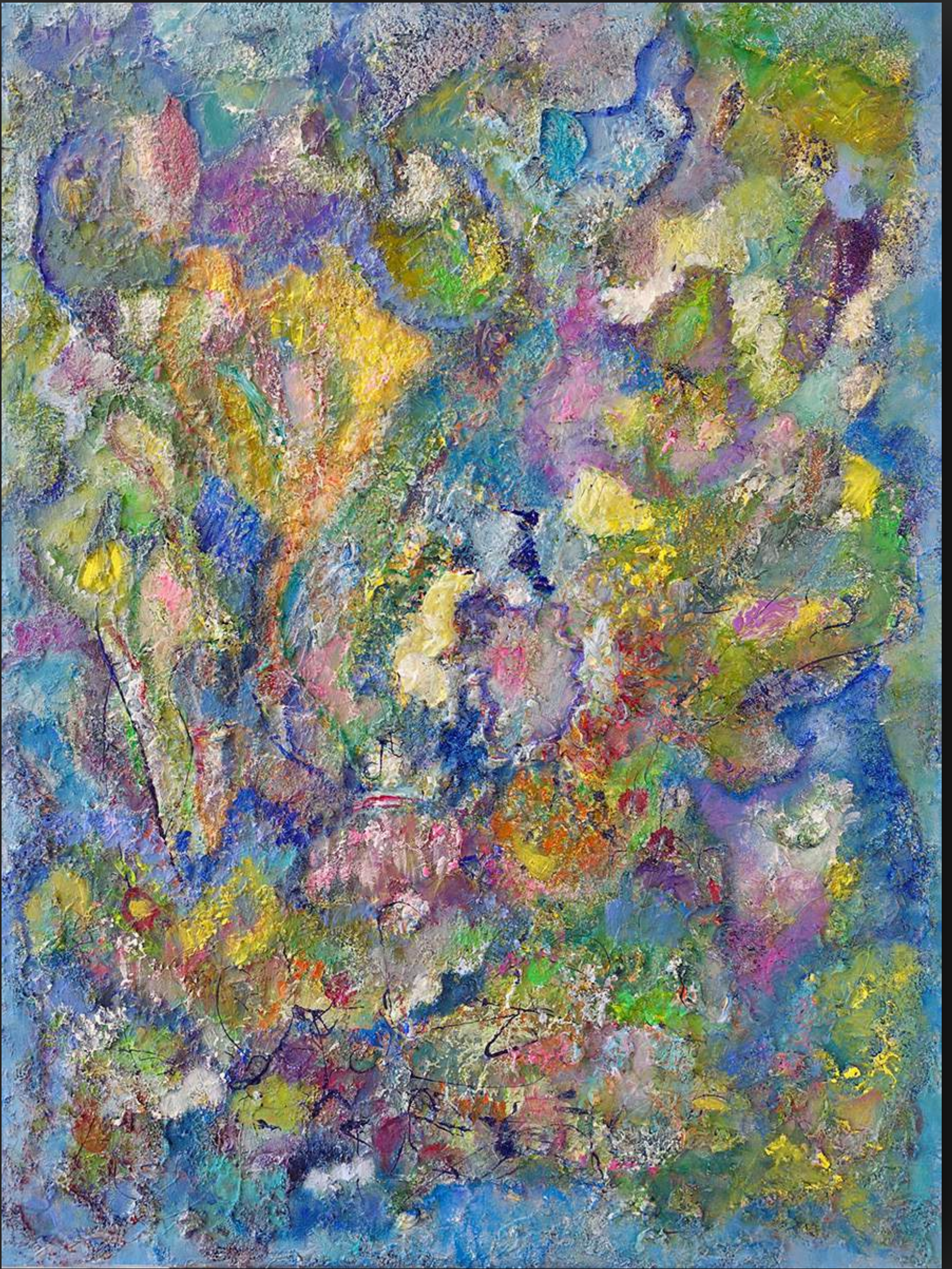


Montana Hills 2

2019, oil on canvas

30 x 40 inches (76.2 x 101.6 cm).

Framed: 32 x 42 inches (81.3 x 106.7 cm).

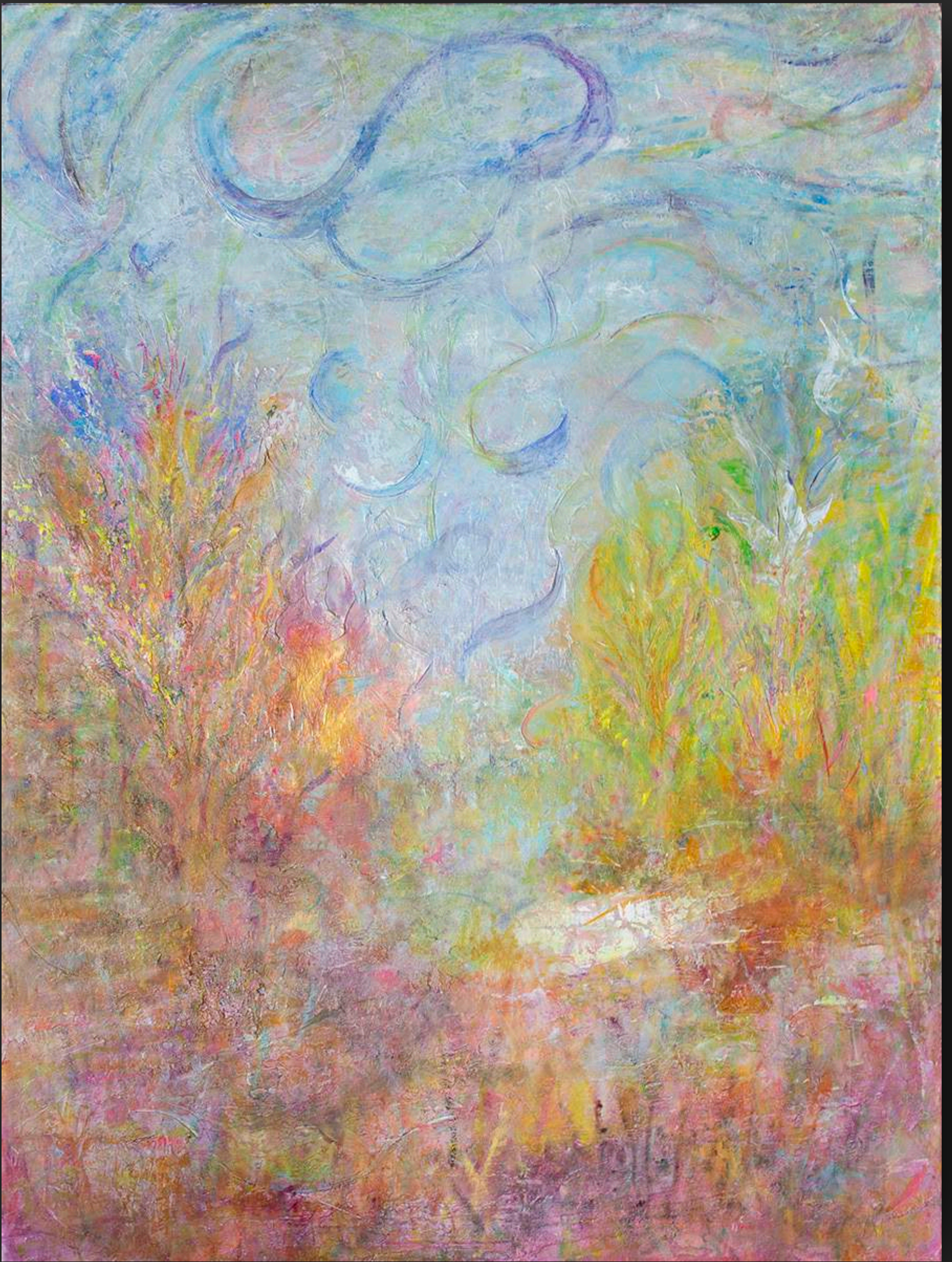


Great Barrier Reef

2018, acrylic on canvas

40 x 30 inches (76.2 x 101.6 cm).

Framed: 42 x 32 inches (106.7 x 81.3 cm).



Pink Field 2

2018, oil on canvas

40 x 30 inches (76.2 x 101.6 cm).

Framed: 42 x 32 inches (106.7 x 81.3 cm).

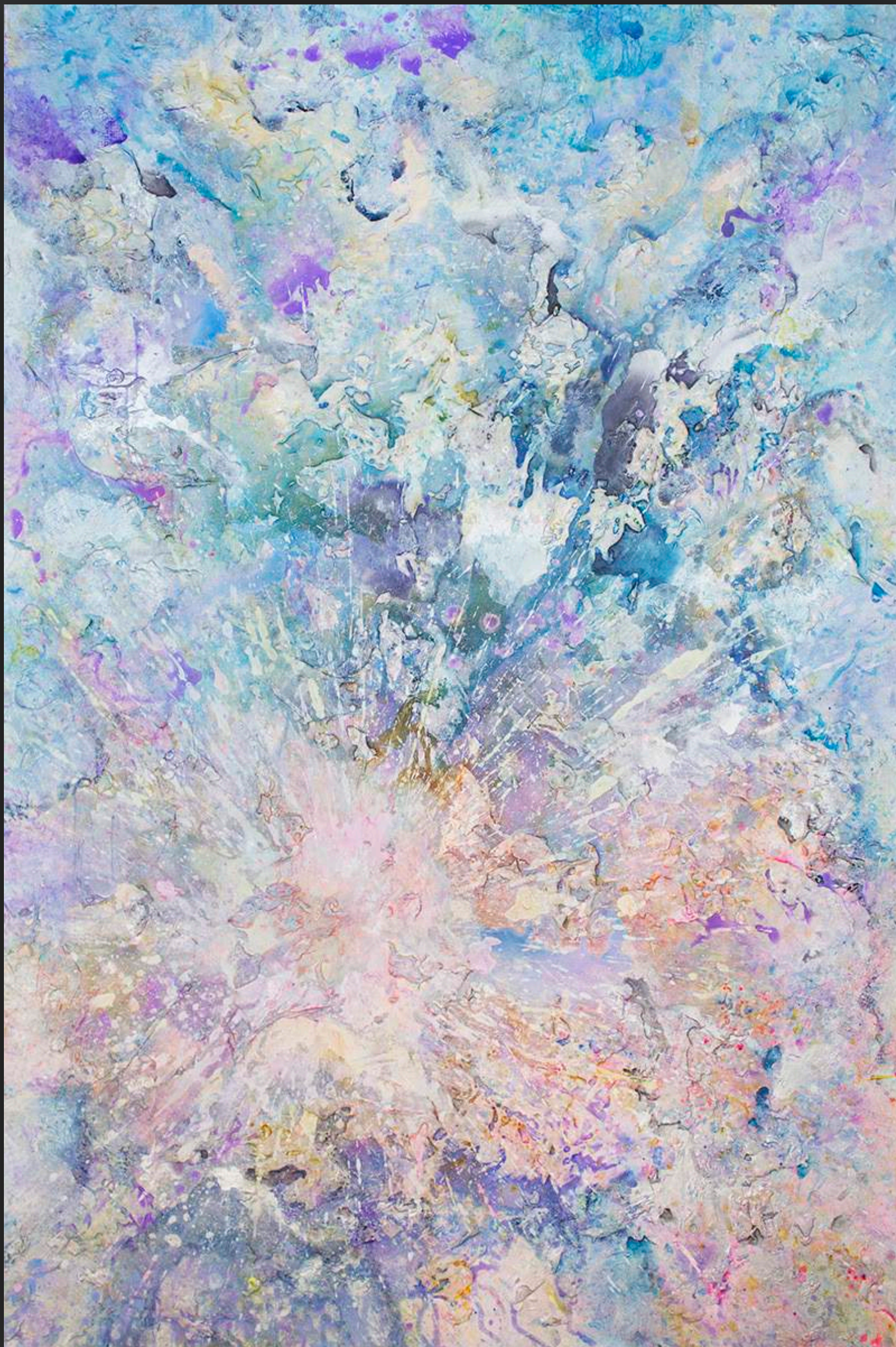


Confetti

2018, oil on canvas

48 x 30 inches (121.9 x 76.2 cm).

Framed: 50 x 32 inches (127.0 x 81.3 cm).

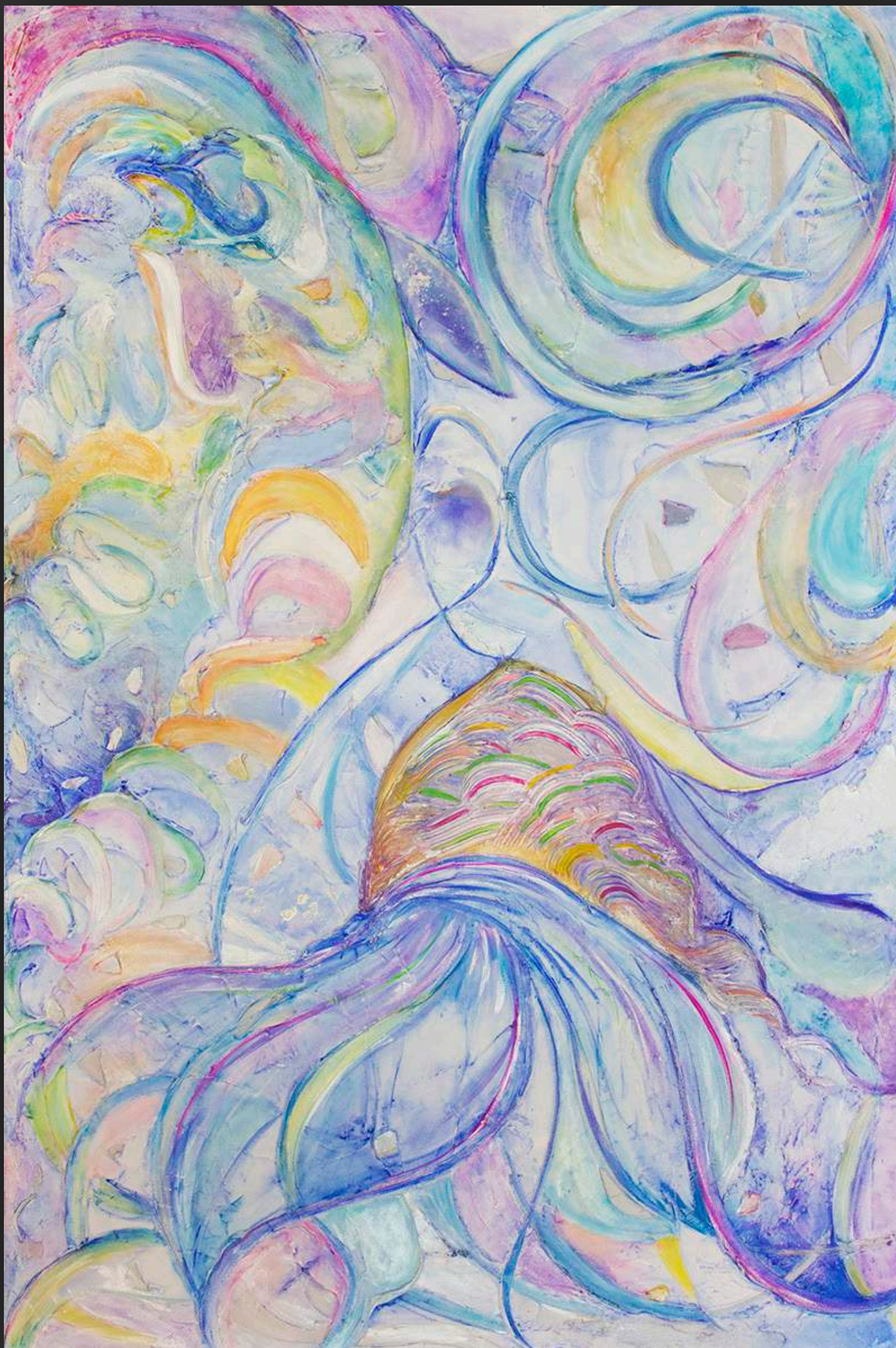


Dreamscape Burst

2018, acrylic on canvas

72 x 48 inches (182.9 x 121.9 cm).

Framed: 74 x 50 inches (188.0 x 127.0 cm).



Rainbow Fish

2018, acrylic on canvas

72 x 48 inches (182.9 x 121.9 cm).

Framed: 74 x 50 inches (188.0 x 127.0 cm).



Shangri La 4

2017, acrylic on canvas

48 x 108 inches (121.9 x 274.3 cm).

3 panels, 48 x 36 inches (121.9 x 91.4 cm) each.

Framed: 50 x 110 inches (127.0 x 279.5 cm).



Ice Cube Black & Red 2

2019, Oil on canvas

Oil on canvas, 60 x 60 inches (152.4 x 152.4 cm).

Framed: 62 x 62 inches (157.5 x 157.5 cm).



Ice Cube Montana Sapphires

2019, Oil on canvas

Oil on canvas, 60 x 60 inches (152.4 x 152.4 cm).

Framed: 62 x 62 inches (157.5 x 157.5 cm).



Chasing the Invisible

2017, acrylic on canvas

60 x 96 inches (152.4 x 243.8 cm).

2 panels, 60 x 48 inches (152.4 x 121.9 cm) each.

Framed: 62 x 98 inches (157.5 x 248.9 cm).



Phoenix

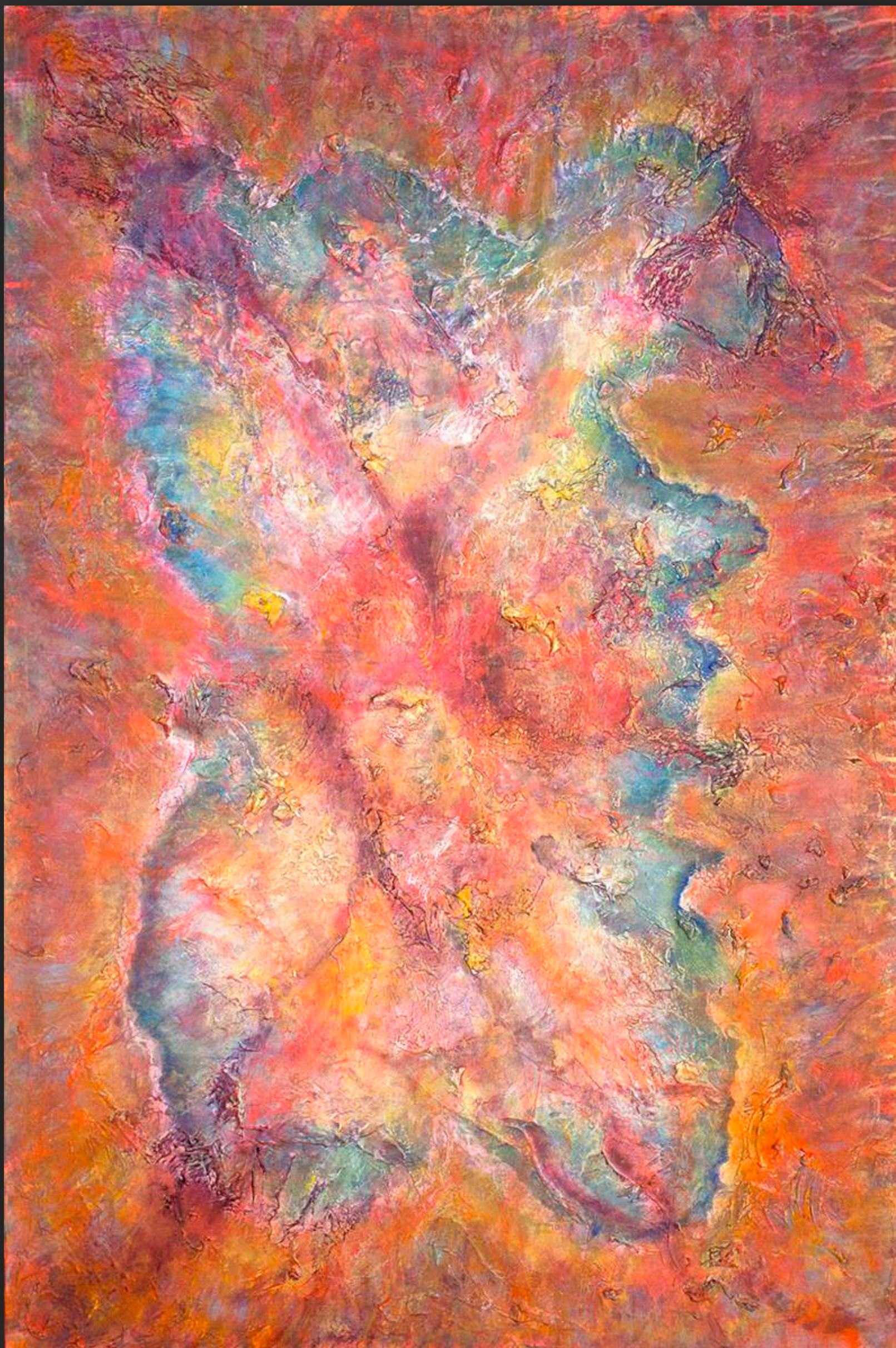
2018, acrylic on canvas

60 x 96 inches (152.4 x 243.8 cm).

2 panels, 60 x 48 inches (152.4 x 121.9 cm) each.

Framed: 62 x 98 inches (157.5 x 248.9 cm).

Detail in essay.

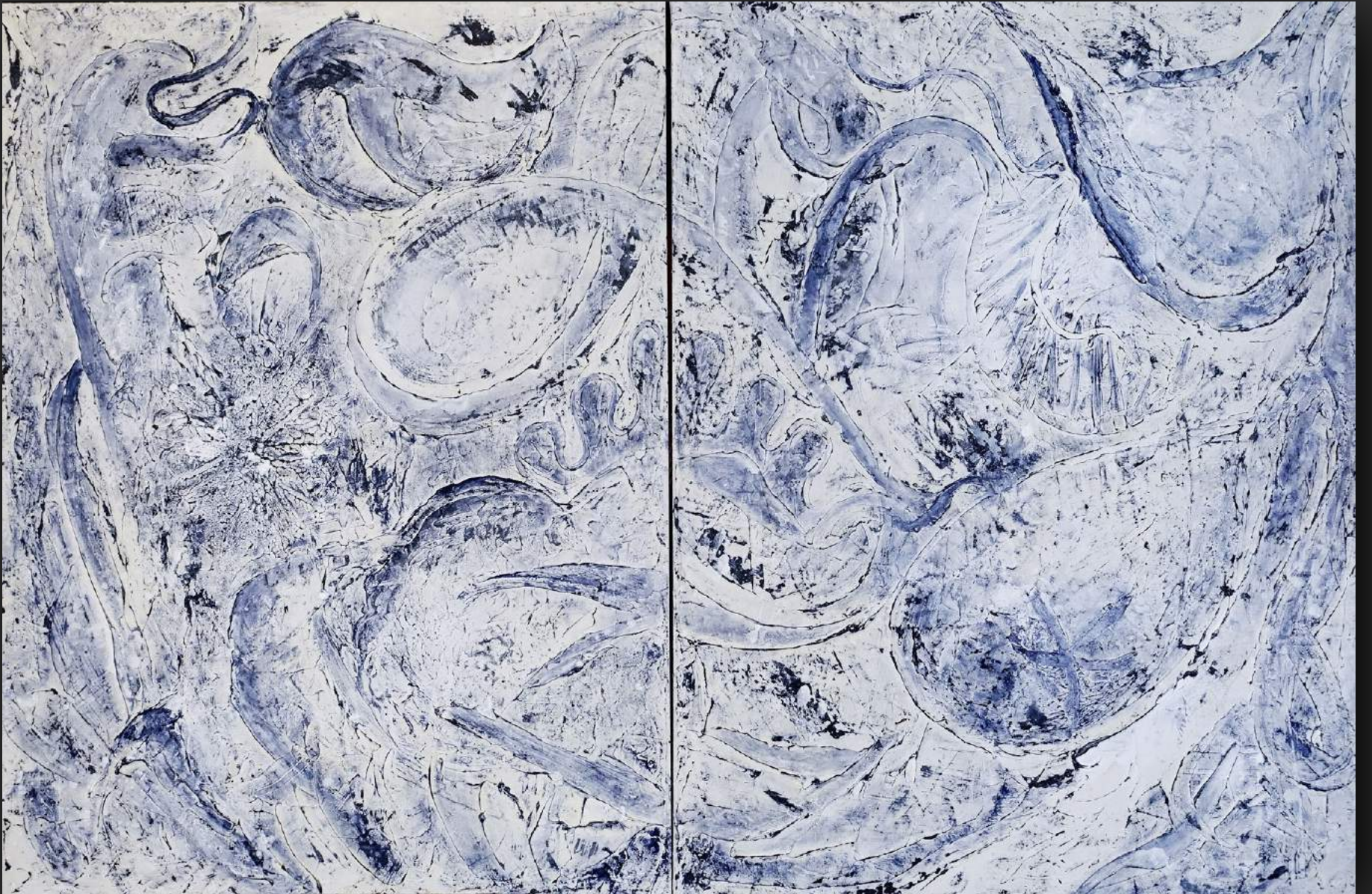


Orchid

2018, acrylic on canvas

72 x 48 inches (182.9 x 121.9 cm).

Framed: 74 x 50 inches (188.0 x 127.0 cm).



Valley of the Stars

2017, acrylic on canvas

48 x 72 inches (121.9 x 182.9 cm).

2 panels, 48 x 36 inches (121.9 x 91.4 cm) each.

Framed: 50 x 74 inches (127.0 x 188.0 cm).



Madame Butterfly

2019, acrylic on canvas

72 x 60 in (182.9 x 152.4 cm).

Framed: 74 x 62 in (88.0 x 157.5 cm).



Translucence

2019, acrylic on canvas

72 x 60 in (182.9 x 152.4 cm).

Framed: 74 x 62 in (88.0 x 157.5 cm).



Aurora Borealis

2017, Acrylic on canvas

72 x 108 inches (182.9 x 274.3 cm).

3 panels, 72 x 36 inches (182.9 x 91.4 cm) each.

Framed: 74 x 110 inches (188.0 x 279.4 cm).



The Way We Were

2019, acrylic on canvas

72 x 120 in (182.88 x 304.8 cm).

2 panels, 72 x 60 in (182.9 x 154.2 cm) each.

Framed: 74 x 62 in (188.0. x 157.5 cm).



Dance of the Caterpillars

2018, acrylic on canvas

72 x 120 in (182.88 x 304.8 cm).

2 panels, 72 x 60 in (182.9 x 154.2 cm) each.

Framed: 74 x 62 in (188.0. x 157.5 cm).



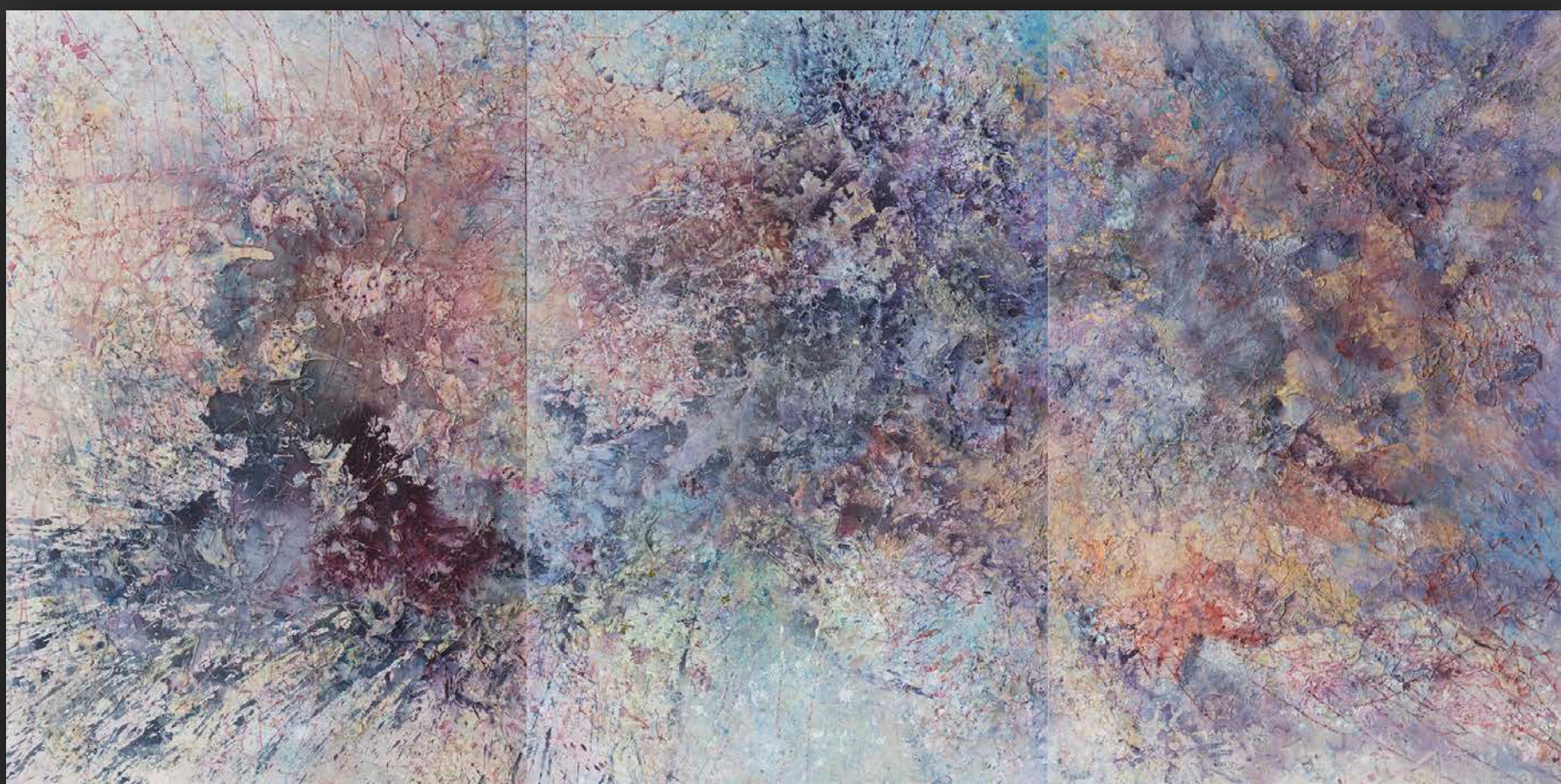
Moonstone

2017, acrylic on canvas

72 x 120 in (182.88 x 304.8 cm).

2 panels, 72 x 60 in (182.9 x 154.2 cm) each.

Framed: 74 x 62 in (188.0. x 157.5 cm).



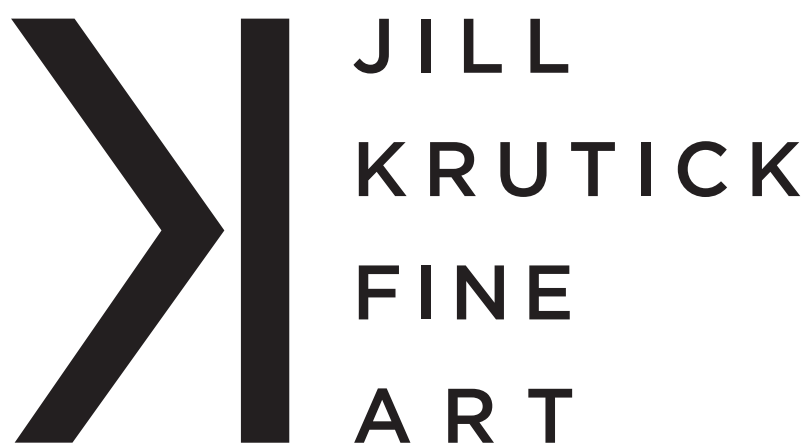
Aurora Borealis 3

2018, acrylic on canvas

72 x 144 inches (182.88 x 365.8 cm).

3 panels, 72 x 48 inches (182.9 x 121.9 cm) each.

Framed: 74 x 146 inches (188.0. x 370.8 cm).

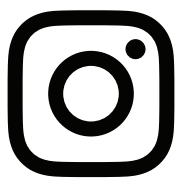


425 MOUNT PLEASANT AVE
MAMARONECK, NY 10543

WWW.JILLKRUTICKFINEART.COM
E: JSK@JILLKRUTICKFINEART.COM
T: 914.522.0420



JSKFINEART



@JILLKRUTICKFINEART



IN/JILLKRUTICK



@JILL_KRUTICK

COPYRIGHT © 2019 JILL KRUTICK

DESIGNED BY SIMONE KURTZ