

YELLOWSTONE ART MUSEUM
BILLINGS, MONTANA

JILL KRUTICK

METAMORPHOSIS



JILL
KRUTICK
FINE
ART

Jill Krutick: Metamorphosis

BY SUSAN FLOYD BARNETT

Curator, Yellowstone Art Museum

NOVEMBER 7, 2019 – JANUARY 5, 2020

OPENING RECEPTION 6 – 8 P.M. | NOVEMBER 7, 2019

“Krutick’s paintings seem to be in a state of ... “creative flux”—they seem to constantly change, and as such seem ever-fresh, offering new aesthetic vistas...”

— Donald Kuspit, art critic

Jill Krutick’s paintings trace her joyful path of self-discovery and creative exploration. Using texture, form, and color, she suggests the intense beauty and constant flux of nature: galaxies, skies, blossoms, and tides. “Balance remains my main goal,” she says. “I strive to capture basic natural elements—earth, water, sun, and sky—contrasting light and dark in order to capture movement through a variety of textures.” The interplay of three-dimensional shapes with layered splashes of color creates a sense of motion and interaction, not unlike the interplay of light and form in nature.

Krutick begins many of her compositions by swirling texture onto canvas. The first strokes set the tempo and key. As she layers paint and glazes over the dimensional foundation, the feeling is that of improvisational jazz, call and response, action and reaction. “You start on a journey,” she says. “Shapes emerge, stories germinate, and concepts develop.” Krutick’s paintings shimmer with translucent layers, suggesting the complexity and dynamic sublimity of nature. The celebrated art critic, poet, and curator Donald Kuspit writes that “she abstracts the creative flow of nature from its material manifestation.” Her Trout paintings isolate the colorful patterning along the side of a trout, where the camouflage of rock and sky merge. Her ocean-inspired canvases might suggest a horizon line, or dive into the deep blue. The Aurora Borealis paintings depict infinite distances of swirling color, splattered across canvases large enough to envelop the viewer. These and her light-saturated skies represent both the beauty and terror of the sublime. Krutick says, “I include the Sun in most of my abstract work as I’m captivated by the intimate relationship between light and dark.”

The arts have always played a central role in Krutick’s life. She studied to be a professional pianist through high school, becoming accomplished enough to give a solo performance at Carnegie Hall. In 2011, after making a successful career as a Wall Street analyst and launching her children into the world,



she gave herself the gift of time to create. She began studying at the Art Students League and traded economic security for a state of constant exploration. She combines a childlike joy and playful inquisitiveness with the discipline and focus of a fortune-500 executive. Her work vibrates with sublime beauty and intense energy, reflecting her personal metamorphosis and the interconnected, constantly changing nature of life. Krutick works full time as an artist at her studio in Westchester, New York. She has had numerous solo exhibitions, most recently at the Coral Springs Museum of Art, Florida. Her work is in more than 100 public and private collections. She has served on boards including the Art Students League, the Recording Academy (NY Chapter), Hoff-Barthelson Music School, the Wharton Arts Network and National Amusements.

WORKS FEATURED

Phoenix, 2018, Acrylic on canvas, 60 x 96 inches;
2 panels, 60 x 48 inches each. *Swirl Series. Pictured above.*

Taking Flight, 2019, Acrylic on canvas, 72 x 60 inches.
Swirl Series. Detail on front cover.

Brochure design by Simone Kurtz.



Aurora Borealis 3, 2018

Acrylic on canvas, 72 x 144 inches

3 panels, 72 x 48 inches each

Aurora Borealis Series



Aurora Borealis, 2017
Acrylic on canvas, 72 x 108 inches
3 panels, 72 x 36 inches each
Aurora Borealis Series



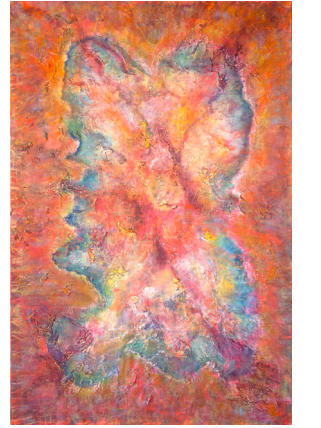
Great Barrier Reef, 2018
Acrylic on canvas, 40 x 30 inches
Abstract Landscape Series



Madame Butterfly, 2019
Acrylic on canvas, 72 x 60 inches
Swirl Series



Montana Hills 1, 2019
Oil on canvas, 30 x 40 inches
Abstract Landscape Series



Orchid, 2018
Acrylic on canvas, 72 x 48 inches
Ice Cube Series



Pink Field 2, 2018
Oil on canvas, 40 x 30 inches
Abstract Landscape Series



Moonstone, 2017
Acrylic on canvas, 72 x 120 inches
2 panels, 72 x 60 inches each
Swirl Series



Taking Flight, 2019
Acrylic on canvas, 72 x 60 inches
Swirl Series



The Way We Were, 2019
Acrylic on canvas, 72 x 120 inches
2 panels, 72 x 60 inches each
Abstract Landscape Series



Trout Series: Cutthroat, Brook, Brown & Rainbow, 2019
Oil on canvas, 18 x 24 inches each
Trout Series



Ice Cube Montana Sapphires, 2019
Oil on canvas, 60 x 60 inches
Ice Cube Series



Shangri La 4, 2017
Acrylic on canvas, 48 x 108 inches
3 panels, 48 x 36 inches each
Shangri La Series



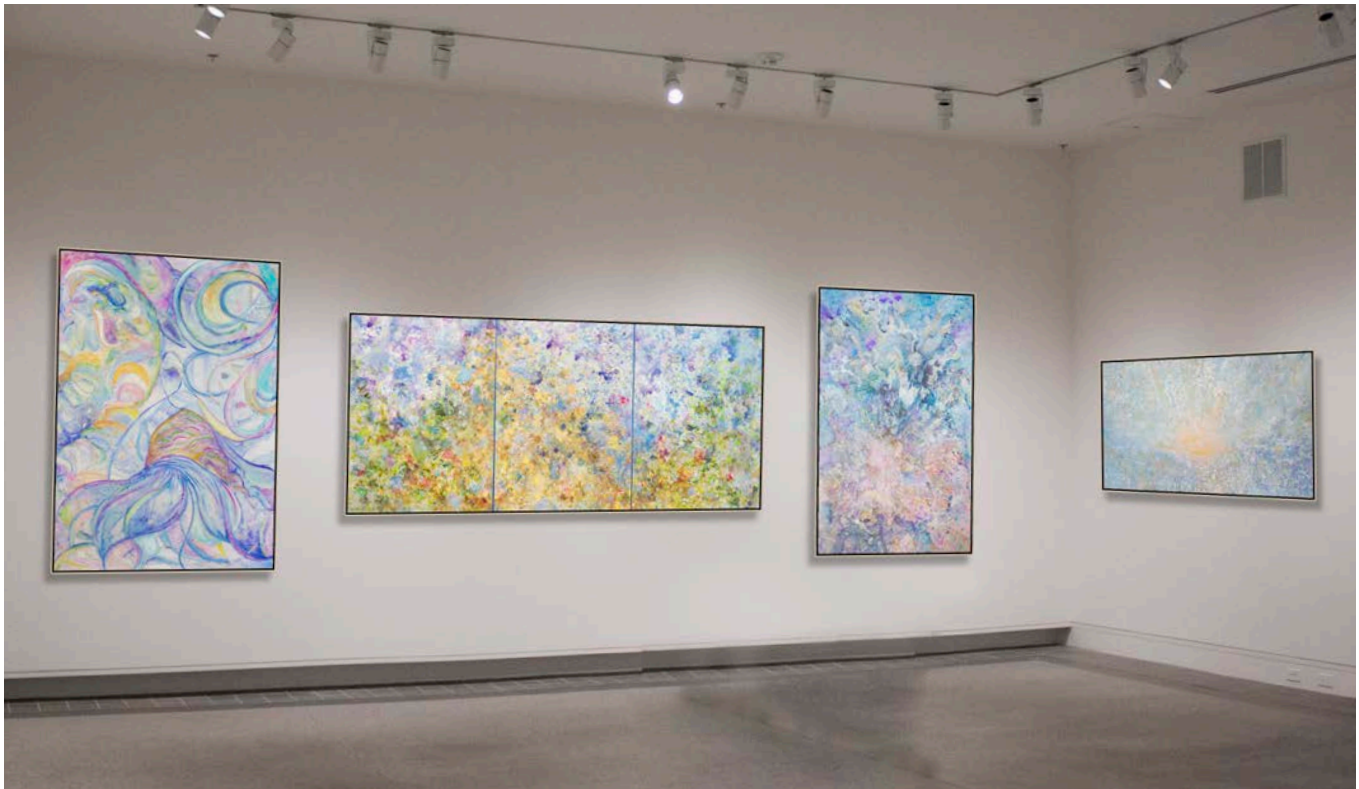
Confetti, 2018
Oil on canvas, 48 x 30 inches
Swirl Series



Dance of the Caterpillars, 2018
Acrylic on canvas, 72 x 120 inches
2 panels, 72 x 60 inches each
Swirl Series



Ice Cube Black & Red 2, 2019
Oil on canvas, 60 x 60 inches
Ice Cube Series



JILL KRUTICK FINE ART

425 MOUNT PLEASANT AVENUE, 2ND FLOOR,
MAMARONECK, NEW YORK, 10543

T: 914.522.0420
E: JSK@JILLKRUTICKFINEART.COM

WWW.JILLKRUTICKFINEART.COM

YELLOWSTONE ART MUSEUM

401 N 27TH ST
BILLINGS, MONTANA 59101

T: 406.256.6804

WWW.ARTMUSEUM.COM

