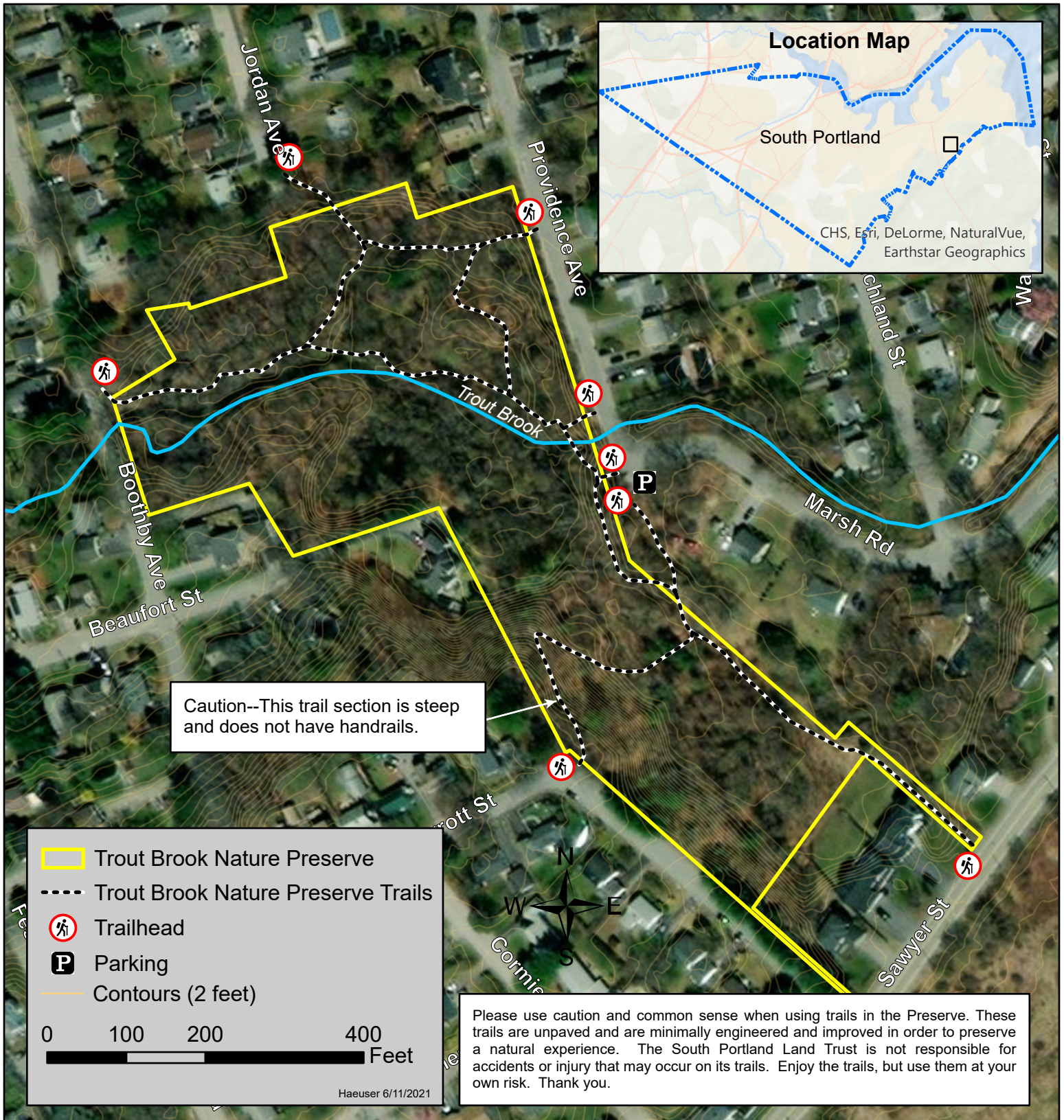




# Trout Brook Nature Preserve

South Portland, Maine

Length = 0.3 Miles (Sawyer Street to Boothby Avenue)



South Portland Land Trust is a nonprofit organization committed to linking neighborhoods and improving quality of life in South Portland through expanding the city's trail network, conserving open space, and educating the public on issues related to conservation. It holds eighteen properties and easements within the City of South Portland to preserve natural habitat, trail access, and open space for public enjoyment. Please visit [southportlandlandtrust.org](http://southportlandlandtrust.org) for information and follow us on Facebook, Instagram, and Twitter: @sopolandtrust.