

QASTIC DESIGN-BUILD

WWW.QASTIC.COM
E: INFO@QASTIC.COM
T: (+1) 617.335.5062



QASTIC DESIGN-BUILD

Focused on exploring innovative approaches to materials, fabrication, and craftsmanship, QASTIC is a boutique design-built studio whose practice spans the fields of architecture, urban design, installation art, multimedia performance, digital media, and print.

We go beyond the specific brief, the site and its physicality, and convention, with an open and impartial approach. We work beyond the usual disciplines, seeking collaborations and solutions with the like-minded, the equally committed, with those who recognize the need to look at the world with a fresh and critical eye. We ask Questions and try to provide solid Answers in a fantASTIC way to those questions.

Q+A+STIC = QASTIC.

QASTIC's collaborative practice operates with a unique spirit of curiosity and research through defining questions around fundamental aspects of the projects. As a result of these questions, architectural solutions would emerge through restless studies in the program, material qualities, and fabrication systems in defining new geometries, structures, and forms.



Founder: Mahdi Alibakhshian

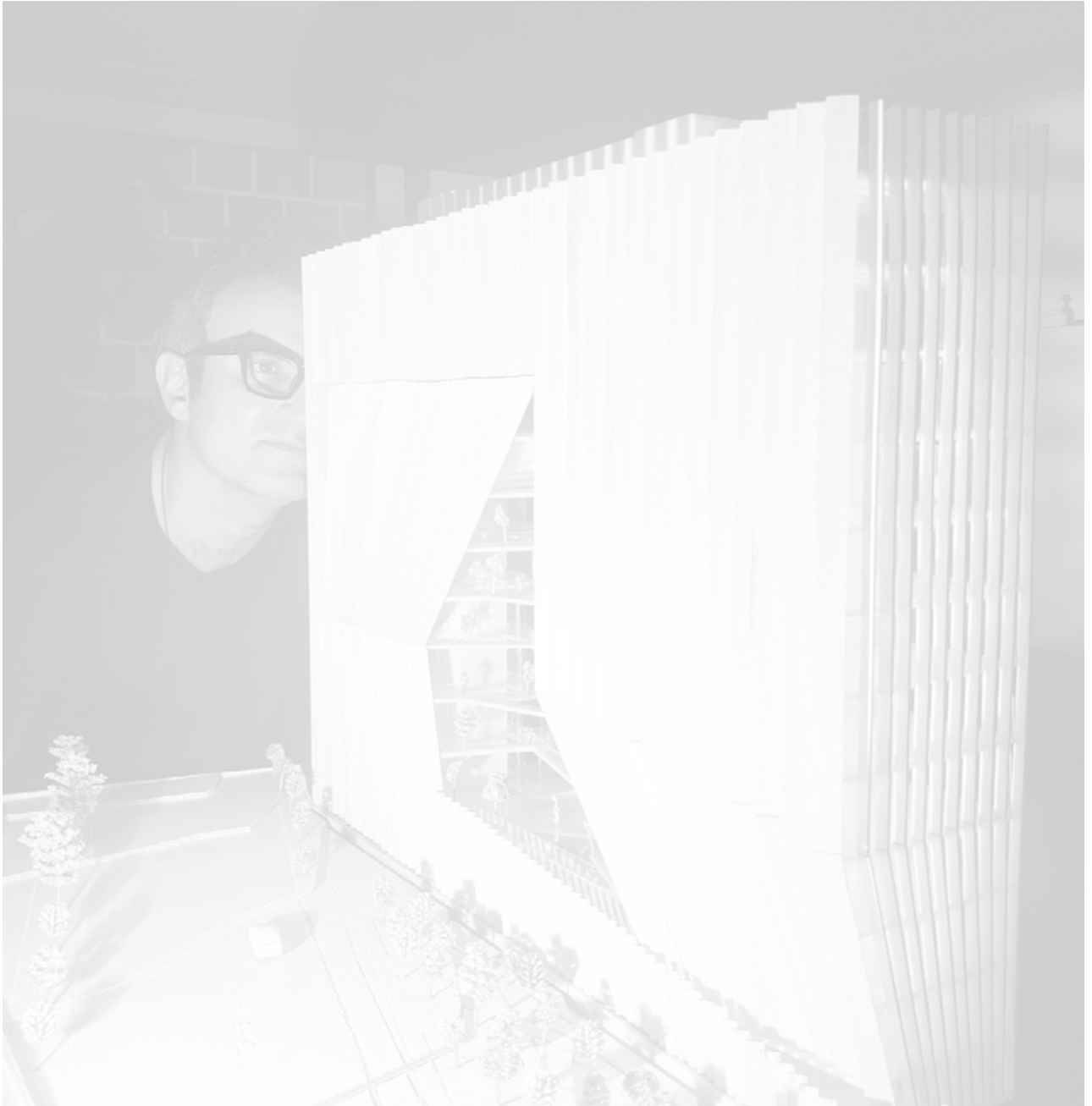
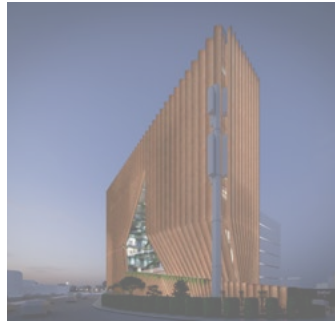


TABLE OF CONTENTS

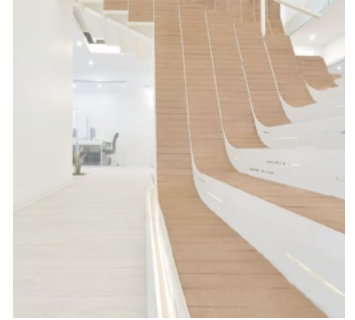
SABA IDEA HEADQUARTERS

Tehran, Iran
2024



APARAT STAIRS

Tehran, Iran
2016



TRANSBAY TRANSIT CENTER

2012-2021



APARAT HEADQUARTERS

Tehran, Iran
2016



FACEBOOK FRE FARM

2019



WANDA PLAZA COMMERCIAL MALL

2012



UNIVERSITY OF MELBOURNE SCHOOL OF ARCHITETURE INTERIOR LOBBY

2012



PARCEL9 MULTIPLEX

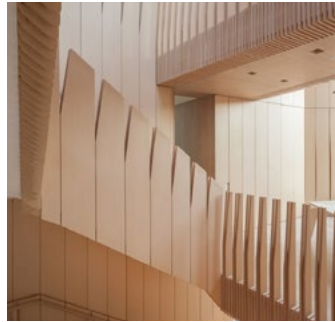
Boston,
2011



DC HOUSE
2013



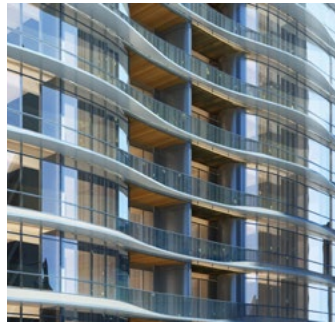
DC HOUSE INTERIOR
2013



**YANTIAN SERVICE APARTMENT
PODIUM**
Shenzen, China
2012-2016



**YANTIAN SERVICE APARTMENT
TOWERS**
2012-2016



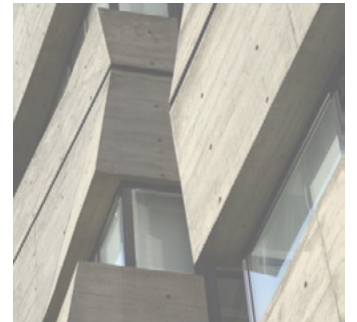
KUALA LUMPUR TOWERS
2013



WESTWOOD CONDO REMODEL
2024



GOLFAM OFFICE BUILDING
2009



CASA RAMIREZ
2024



ROOFSCAPE HOUSE
2018



**ROOFSCAPE HOUSE
INTERIOR**
2018



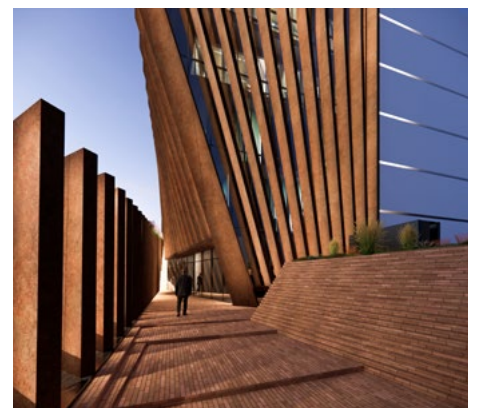
SABAIDEA HEADQUARTER

QASTIC LAB | Principal In charge : Mahdi Alibakhshhian | Design team: Alireza Alidousti- Hooman Faali - Reza Aghajani - Sedigheh Jafarinik - Milad Hasanabadi



Taking advantage of the adjacent urban city-owned green space, the massing is suggested to be planned in a way that the southern plaza and the outdoor walkway to the main central outdoor void interact with the green space in continual green space which turns a horizontal park to a vertical central space, its balconies and bridges.

When it comes to the form and façade formation, the startup company being in the show, production, and streaming business is a source of inspiration. Therefore, the concept emerged from the notion of creating a giant vertical curtain that opened up at the center to show the central transparent void and event space. As a result, to control the southeast light, the façade system offers the vertical Corten sheet finished metal ribbons and 45-degree curtain wall glazing that are hung from the concrete structure slabs.





TRANSBAY TRANSIT CENTER

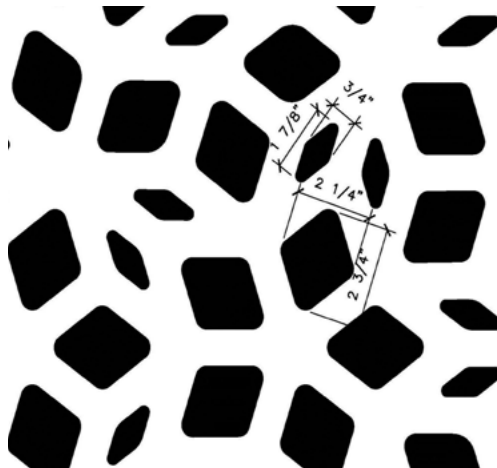
Pelli Clark Pelli Architects

Design Coordinator in a team of 3 people | Role: Studies on the exterior facade panelization and skin pattern (DD-CD)



Discovered in 1974, the Penrose Rhombus Tiling was heralded by mathematicians and physicists ultimately helping to give birth to the new field of quasicrystals which spawned discoveries in material science and biology. Dr. Penrose's discovery initially yielded designs that were only known to exist in synthetic materials. Patterns similar to Dr. Penrose's design, however, have recently been found in natural materials such as those in meteorites. The rhombus pattern can be elegant and beautiful to the eye. When used at the scale of the new Transit Center, it creates a delicate, lace-like screen that is an ideal contrast to the monumental structure of the Transit Center.

The Penrose tiling, with its non-repeating pattern, is well suited to the complex, curved form of the Transit Center exterior. To achieve the undulating sensation of the Transit Center exterior, I designed multiple metal panels of varying sizes and trapezoidal shapes that require seamless visual transitions from panel to panel—a visual effect that can be achieved only with a non-periodic pattern. The pearlescent white metal skin of the Transit Center will be perforated with the Penrose pattern, letting 35 percent of the wall surface remain open to light and air. The passenger experience from the inside will be one of openness and diffused light.





FACEBOOK FRE FARM

PHASE 2: Design Development | Mahdi Alibakhshian
2019



FRE 117 AXON AND WALL COORDINATION PLAN



FRE 117 - FINISH PLAN



FRE 117 - PREFUNCTION



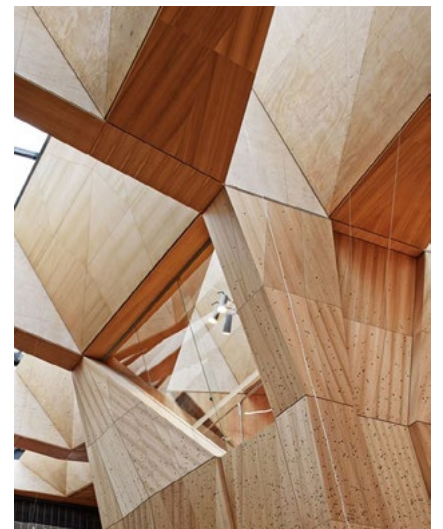
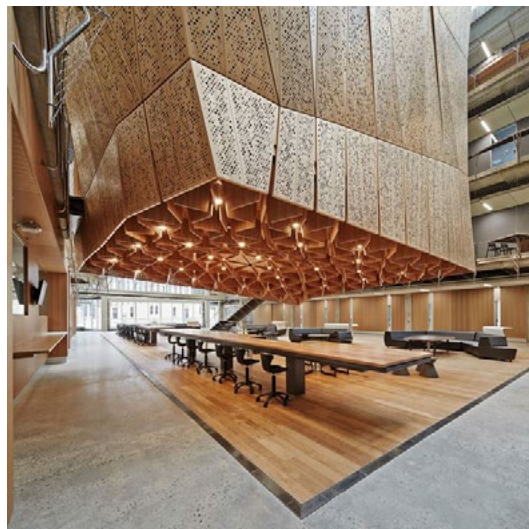
screen

Frosted Film per Security Measures



UNIVERSITY OF MELBOURNE SCHOOL OF ARCHITECTURE INTERIOR LOBBY

Spring 2012 | Mahdi Alibakhshian Role: Designer in Charge for skylight and suspended studio SD-DD



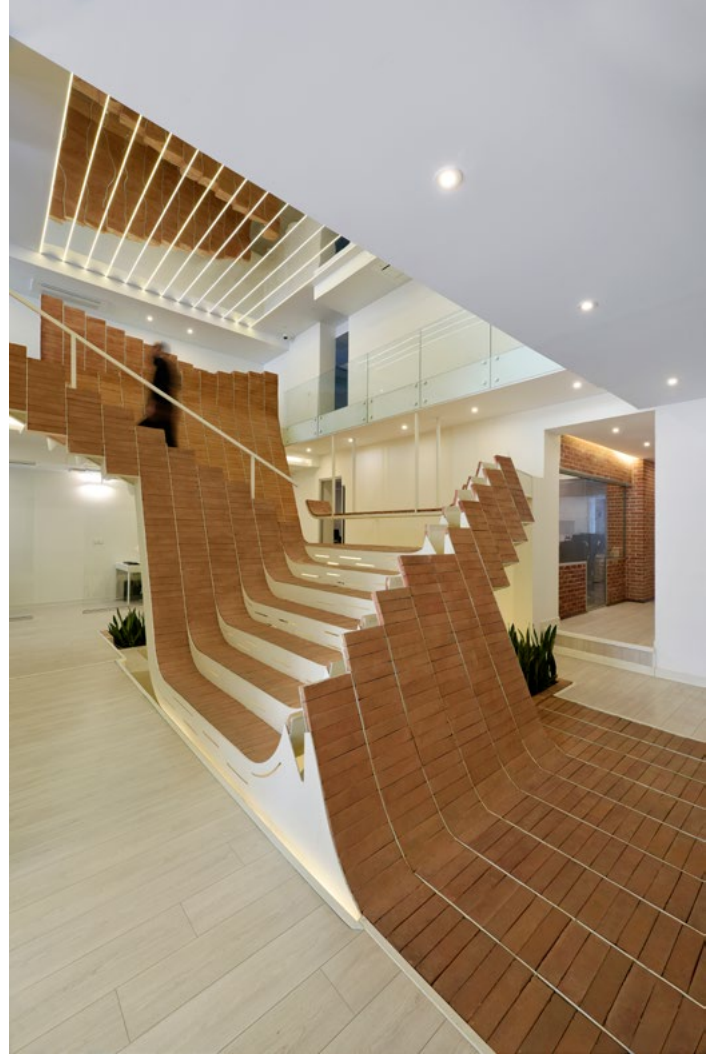
Suspended Studio Interior Built Images

Wood Panel Cladding

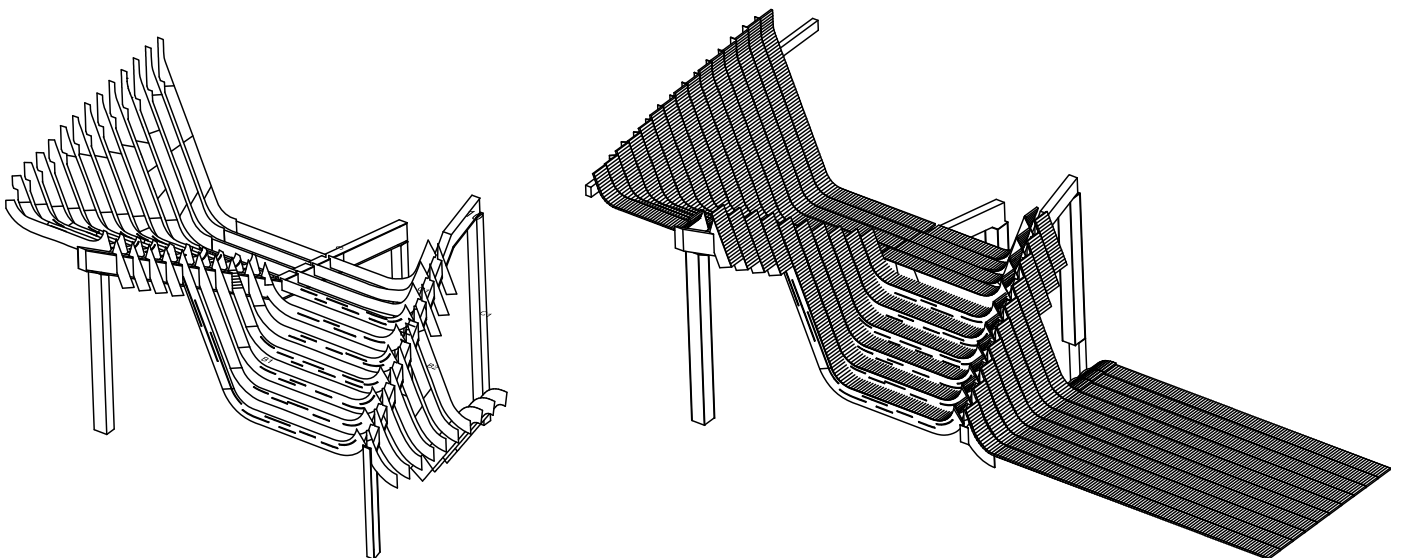


STAIR OF COMMON GROUNDS

QASTIC LAB | Principal In charge : Mahdi Alibakhshian | Design team: Reza Zia - Alireza Shakouri



Aparat Stair concept took shape through a new definition of stair in office spaces. Not only it has the performance of stairs as a mounting element, but also does it work as a mini amphitheatre which provides an opportunity for people to gather, hear, lecture or simply rest during the work hours or their lunch break. Through the process of draping the steel and brick surface over the underground cafe, its porosity, and mutual work with its underground space would all offer a stair that provides a variety of experiences and performances while responding to its urgencies. The whole steel structure surface is draped over the two diagonal beams that are being held by four columns. Then all of the laser cut pieces are being paved with the brick system to bring the intimate sense of a complex stair building within the building.



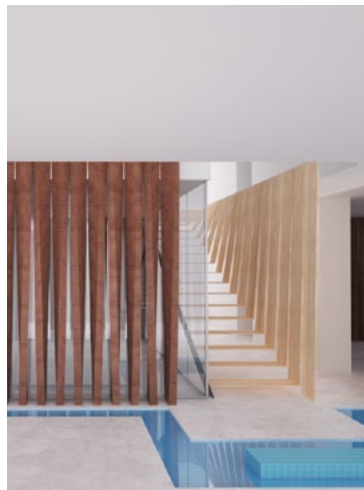
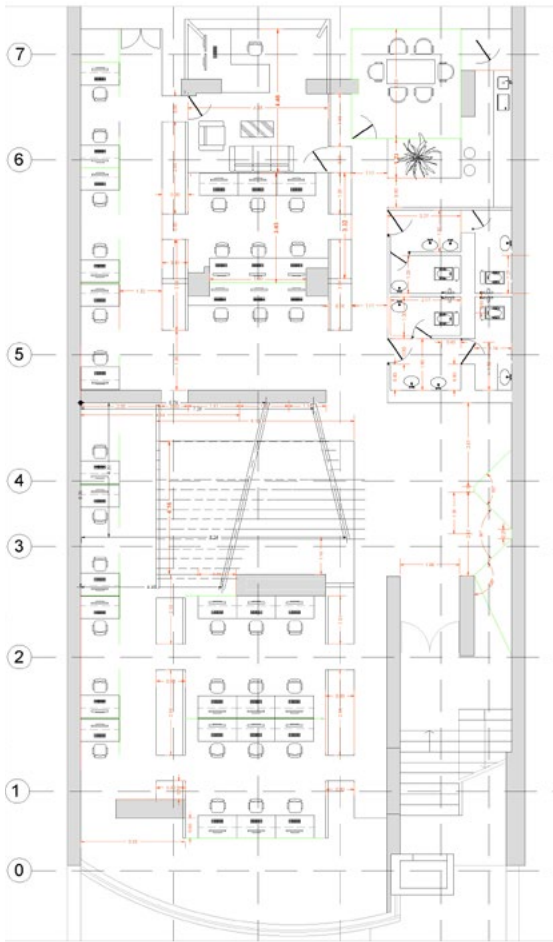
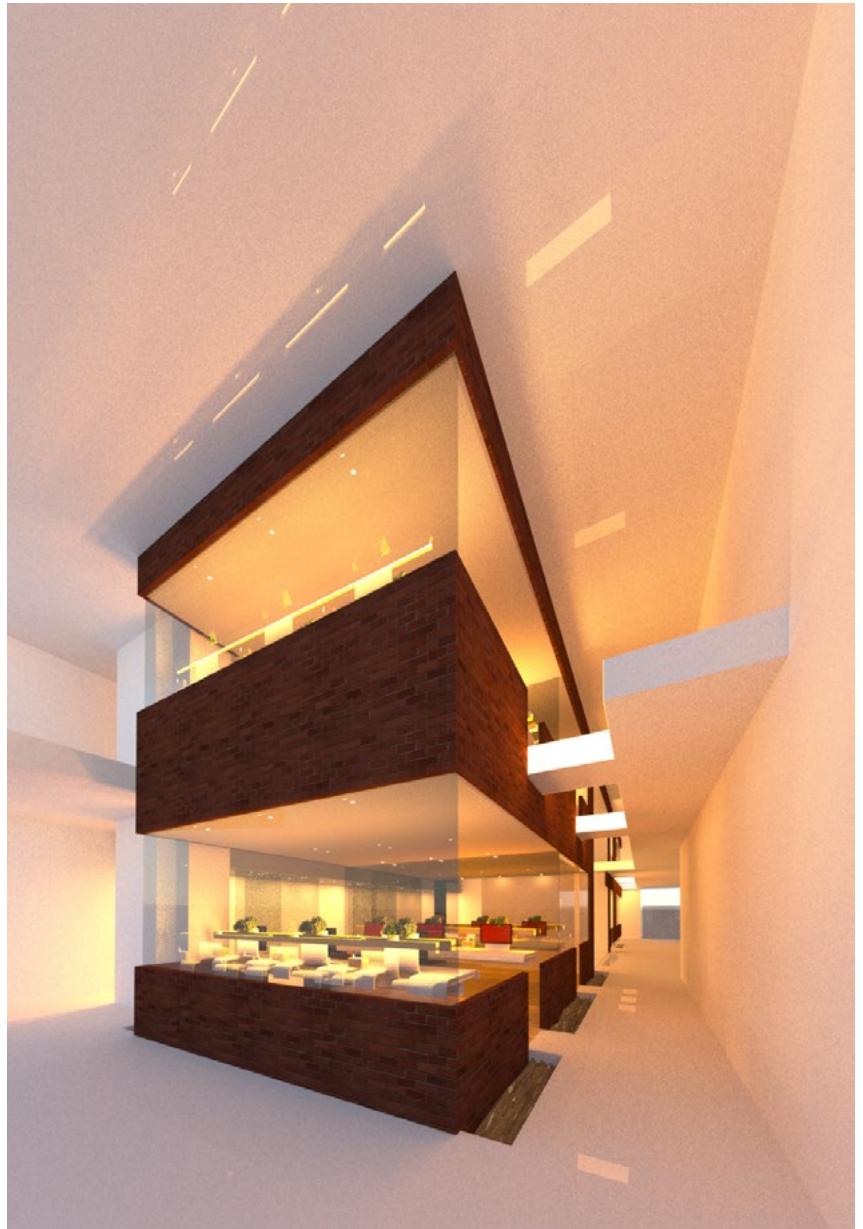


APARAT HEADQUARTER

QASTIC LAB | Principal In charge : Mahdi Alibakhshian | Design team: Reza Zia - Alireza Shakouri

Aparat is an office building which operates as the Youtube of Iran. It delivers video clip and get paid through advertisement and marketing. Their two story 800 square meter headquarter in Tehran is being conceptualized as a building within a 4 story building. Therefore in order to provide intimate yet organized work spaces, Qastic deployed the idea of providing many voids which would define the edges of the internal box.

As a result of this holistic concepts, we are attempting to connect the northern court yard to the southern yard by growing the green plants from on to other at the edges of the newly defined box.



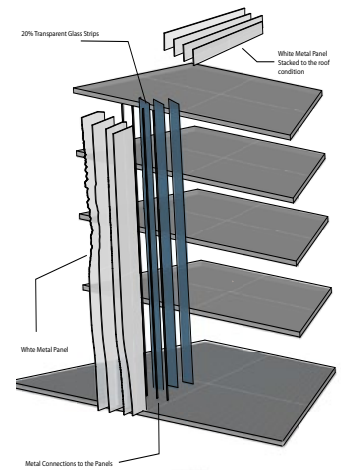


WANDA PLAZA COMMERCIAL MALL

Spring 2012 | Role: Main Designer & Coordinator in a team of two people | Pelli Clark Pelli Architects
Principal In Charge : Bill Butler | Area: 45000Sqm | Renderings : Archiex



The Wanda Plaza competition was the first project that I tackled at PCPA. The problem was redesigning a commercial centre which was initially designed as a base by a local practice in China. The local firm issued a very general conservative program, plan and foundation structure and forwarded the project to us to see how we can apply an architectural approach which can present this project beyond the mere commercial centre.





SAINT LAURENT

ESCADA

PARCEL9 MULTIPLEX

Work at NADAAA | | Role: Main Designer Coordinator SD-DD in a team of three people| Principal in Charge : Nader Tehran i Spring Summer 2011



WHERE NEIGHBOURHOODS MEET HOTEL AT CORNER OF WASHINGTON STREET (URBANICA + NADAAA + D/R/E/A/M + LANDWORKS)

The combined-use building proposed for the parcel 9 development includes a 150-room hotel, groundfloor Commercial, restaurant and community space, 52 units of mixed-income housing, and underground parking for 139 cars. The block was designed to create an urban edge along melnea cass, appropriate for a boulevard, and at a scale in context with dudley square.

While contemporary in spirit, the building's upper bays reference the windowed facades of historic boston proposing various schemes, my role on this proposal was developing the facade system, housing level plans from units to the neighbourhood, rendering and presentation in a group of three members.







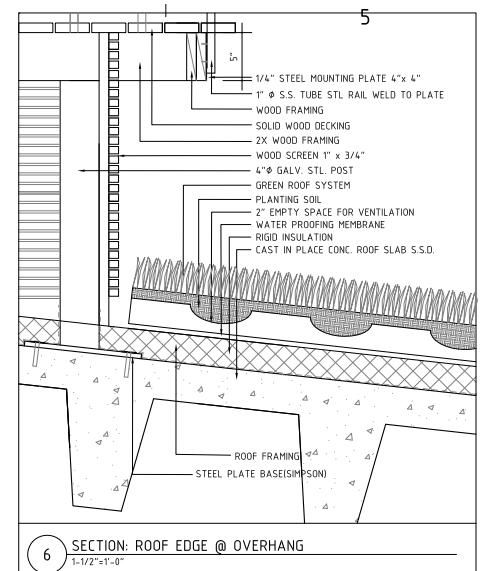
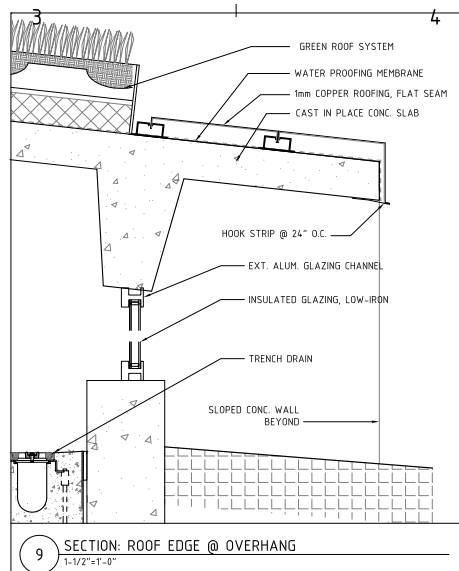
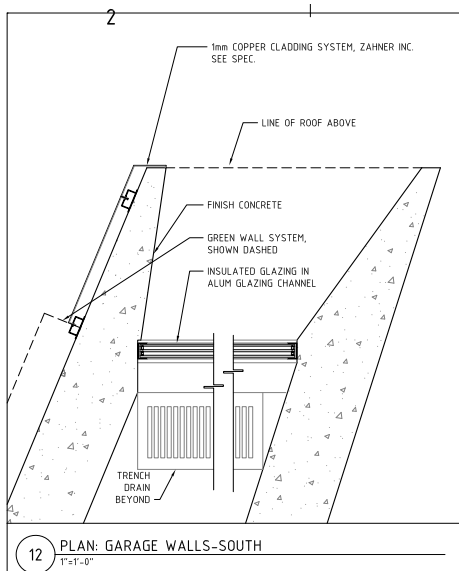


DC HOUSE

Design and Coordination at NADAAA I Role: designer in a team of three people | Fateh House in Washington DC, Client: Hossein Fateh



Fateh house is a renovation of a 1920 building tackling a new program as well as new design at the level of furniture and interior design. Apart from the interior detailed parts, garage and gym are the extension part of the old building. Apart from the interior functional usage of parking, the idea for the garage extension is its integration with the landscape around. Therefore we applied GSKY green wall system to continue the landscape grass all the way to the garage roof via the garage's oriented wall. My role was designing/developing the extension part tackling SD, DD and CD.





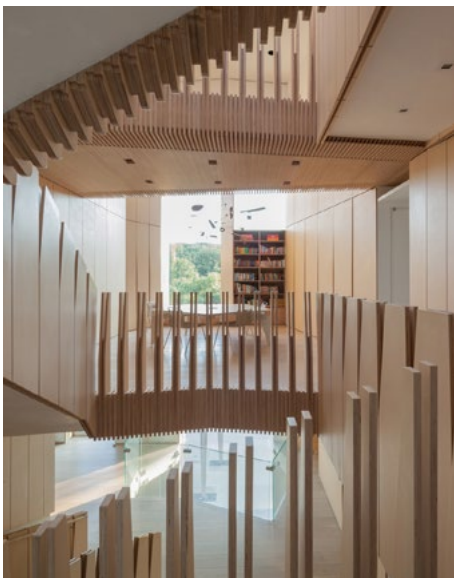
DC HOUSE

Design and Coordination at NADAAA | Role: designer in a team of three people | Fateh House | Washington DC, Client: Hossein Fatehl



The house is an adaptive re-use project of a 1920's brick structure that was originally composed of two floors, as well as a mechanical basement at the garden level, and an attic that offered storage space. This renovation and re-adaption leveraged the connection with the landscape and the robustness of the existing structure to modify the attic and basement to double the size of the house, while offering room for an expanding family of 5, with an added 2-3 staff members.

The most salient spatial intervention was the introduction of a new stair at the center of the house as well as two multi-height spaces. The first is a double height space at the entry, connecting the entry level to the garden level, with a new living room that extends the interior spaces to the southern exposure. The second space connects the entry on the northern side to the former attic, now a research and play loft for the kids capped by a skylight. With these two interventions the once stratified realms of storage, bedrooms, work areas and living areas become interconnected and seamlessly intertwined.

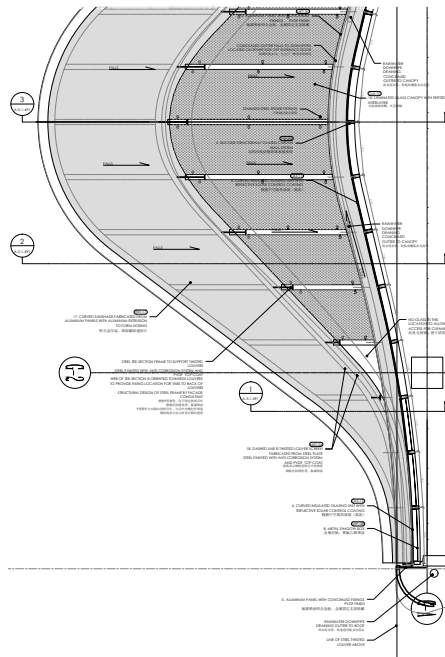
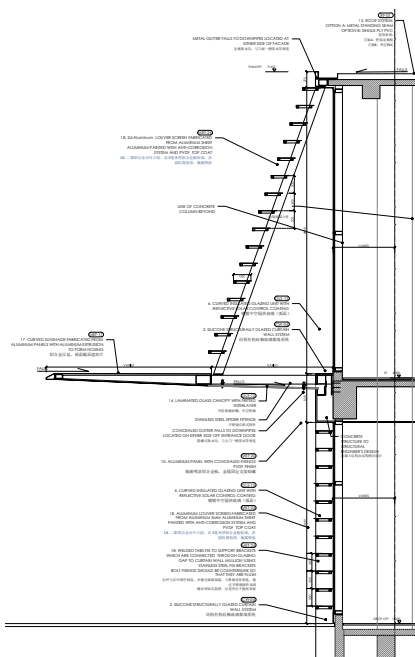




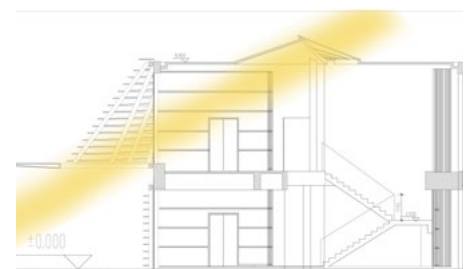
YANTIAN SERVICE APARTMENT PODIUM

Mahdi Alibakhshian collaboration at Pelli Clark Pelli Architects - Client: Vanke China

Design Coordinator in SD, DD and CD in a team of 2 people | Developing Exterior facade curtain wall System



In Yantian Main Lobby building I developed a facade system which not only moderate the direct light penetration into the buildings but also questions the possibility of using twisted steel material in a way that architectural skin wraps around the building changing in response to the appropriate environmental condition.





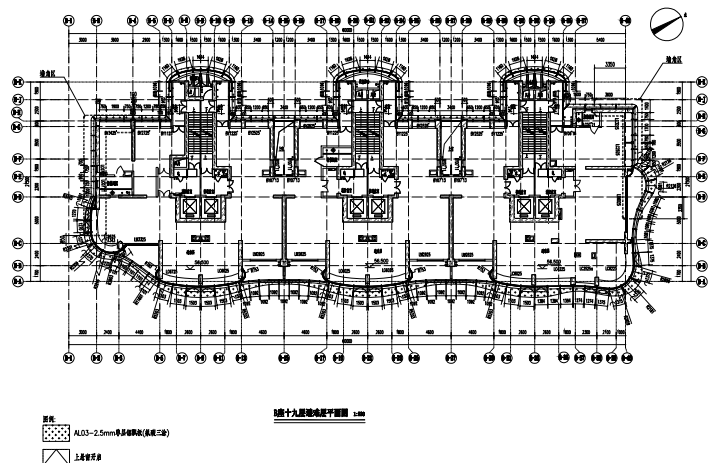
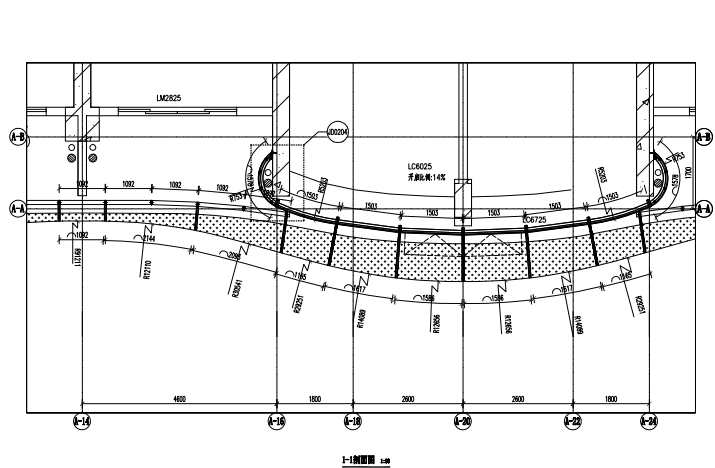
YANTIAN SERVICE APARTMENT TOWERS

Mahdi Alibakhshian collaboration at Pelli Clark Pelli Architects - Client: Vanke China

Design Coordinator in SD, DD and CD in a team of 2 people | Developing Exterior facade curtain wall System



In Yantian Service apartment towers, I have developed a transparent straight curtain wall glass system which facade the towers in a smooth curvature manner. In order to emphasis on the fluidity of the tower, we developed a sun shade system which was projected on XY plan and curved on Z direction to represent a twisted image for sunshades while there is no three dimensional geometry is applied. In this project my role was designer and coordinator with Vanke Chinese client and Hausan Local architects in Designing the curtain wall as documenting the DD sets.



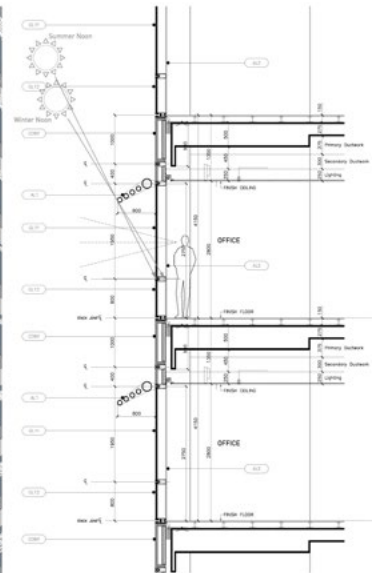
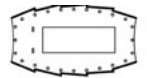


KUALA LUMPUR TOWERS

Mahdi Alibakhshian collaboration with Pelli Clark Pelli Architects - Client: Vanke China



KLC is a combination of a 76 floors office towers , Hotel and podium adjacent to the Petronas towers. The whole concept is to create a tower which remains silent and natural to Petronas allowing it to glow in the region. My task was designing the curtain wall cladding, lobby interior and tower top space and structure.



1:5000
Floor 14/15 Typ



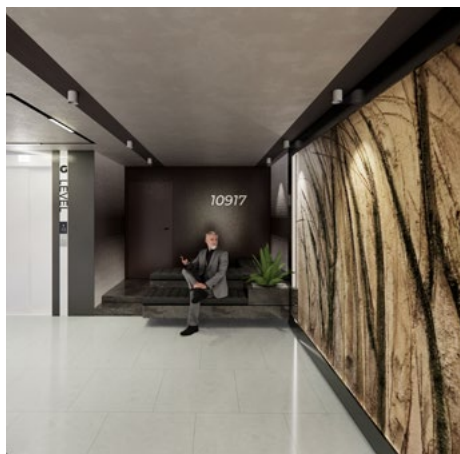
WESTWOOD CONDO REMODEL

QASTIC LAB | Principal In charge : Mahdi Alibakhshhian | Design team: Hooman Faali-Reza Aghajani- Leila Zali



Located in the Westwood district of Los Angeles, the Rochester 12-unit condominiums is a remodel project. The design and construction team are contemplating bringing the new updated facade system, which would extend the vertical character of the building.

It is within the contrast between the bright stucco and espresso aluminum facade system, the design would continue the contrast in the interior lobby, hallways, and units bathrooms and kitchens.





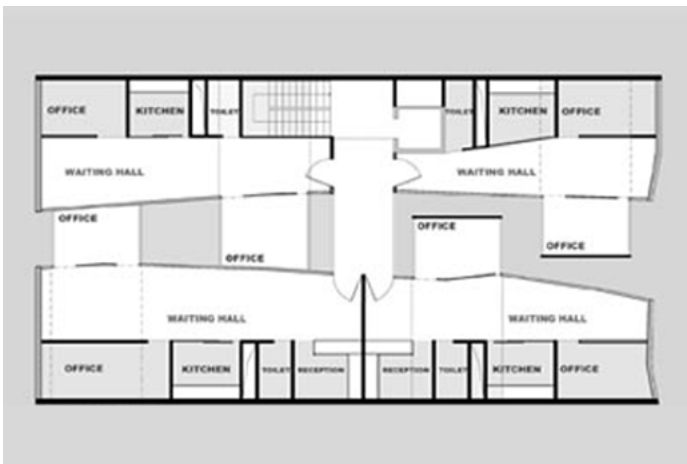
YOSHI

GOLFAM OFFICE BUILDING

Designer and Coordinator at Fluid motion Architects | Role: Designer and coordination in team of three people (SD-DD) and Construction Supervision 2007-2009 | principal In Charge : Reza Daneshmir | Area 1300 Sqm - Construction Completion: Dec 2009 - Tehran



Considering the limited width of Golfam street, and the compact adjacent buildings, and also regarding the clients preference to have four small office units in each floors, the main concept of the project was to provide suitable access, light and fresh air to all units. As a result, the main space such as lobbies, waiting halls and office rooms were located next to the created void and utility service space were organized in two long and narrow straps next to the outer casing of the building. In this building design process, I was project manager from it's initial diagrammatic sketch till construction supervision for two and half years.



3rd Plan Floor



Forth floor from from interior



CASA RAMIREZ

QASTIC LAB | Principal In charge : Mahdi Alibakhshhian | Design team: Milad Hasanabadi



Casa Ramirez explores the idea of stacking two small arched affordable unites on top of each other to frame the view of their related axis. It is within their intersections, that the above and lower unit get to communicate as a family while they maintain their privacy.





ROOFSCAPE HOUSE

Qastic LAB

Design Principal | Role: Principal Designer | Design team: Nguon Keat Tiv, Soroush Sasanian, Clair van der Swan

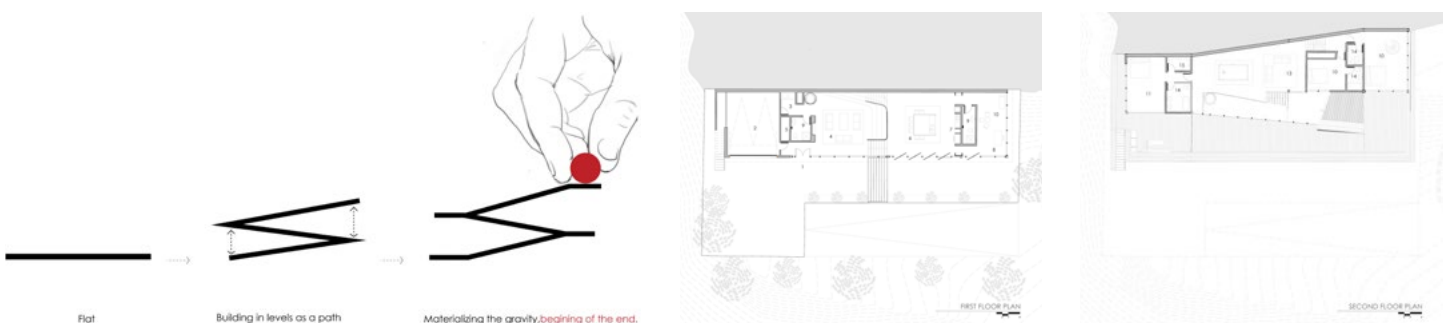


In the Roofscape house, we have one fundamental design question about hillside residential architecture which dictates the formation of the space. How to take advantage of a sloped site, and find an opportunity to redefine the role of a courtyard? As a result, inspired by the geography of the hillside, a continuous and accessible roof-scape took shape to embrace all elements of a yard in a California house.

Located on a hillside lot in Trabuco Canyon of the Orange County, California, the program brief specifies a “typical” house for a family of four. It is of note that the oldest son is interested in, and studying astronomy. Therefore, the ability to set up a telescope(s) in the house to take advantage of the clear sky to study the stars, galaxy and our universe above, is a critical component to the design and spatial composition.

Responding to the limitations steep slope, and taking advantage of the new grade and cut / fill in the site; four separate pads are connected in smooth transitions by stairs while creating the optimal opportunity for interior seating, indoor cinema and library applications. While the interior public areas of this linear house happen in the middle of the structure, the master bedrooms and family rooms are located at both ends of the house again offering direct access to the landscaped roof.

Responding to the limitations steep slope, and taking advantage of the new grade and cut / fill in the site; four separate pads are connected in smooth transitions by stairs while creating the optimal opportunity for interior seating, indoor cinema and library applications. While the interior public areas of this linear house happen in the middle of the structure, the master bedrooms and family rooms are located at both ends of the house again offering direct access to the landscaped roof.

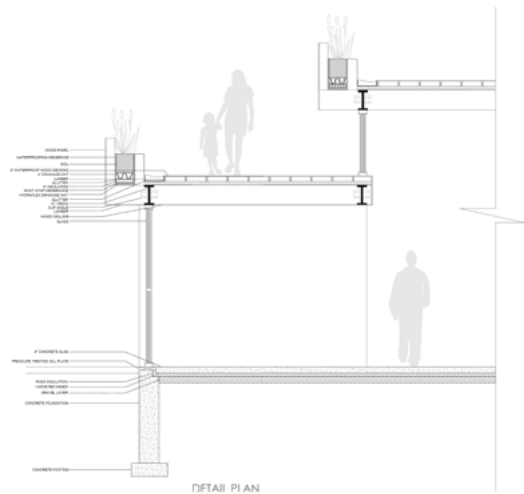




ROOFSCAPE HOUSE INTERIOR

Qastic LAB

Design Principal: Mahdi Alibakhshian | Role: Principal Designer | Design team: Nguon Keat Tiv, Soroush Sasanian, Clair van der Swan



Responding to the limitations steep slope, and taking advantage of the new grade and cut / fill in the site; four separate pads are connected in smooth transitions by stairs while creating the optimal opportunity for interior seating, indoor cinema and library applications. While the interior public areas of this linear house happen in the middle of the structure, the master bedrooms and family rooms are located at both ends of the house again offering direct access to the landscaped roof.

