

Aberdare Community School

Ysgol Gymunedol Aberdâr



Key Stage 4 Options Booklet

A guide to subjects available for pupils entering
year 9 in September 2018.

2018-2021



strive | believe | achieve ● ymdrechu | credu | cyflawni

Contents

Welcome to Options Evening.....	2
Welcome to Key Stage 4.....	3
What do the Qualifications mean?	4
Advice for Students	5
Top Tips for Choosing Subjects.....	6
Extended Learning & Provision.....	7
Welsh Baccalaureate •	9
GCSE English Language •	11
GCSE English Literature •	12
GCSE Mathematics (Double Award) •	13
GCSE Science (Double Award) •	15
GCSE Welsh 2 nd Language •	16
GCSE Art & Design •	17
GCSE Business Retail •	18
GCSE Child Development •	19
GCSE Computer Science •	20
Level 1/2 Construction •	21
Employability Skills •	22
GCSE Drama •	23
BTEC Engineering •	24
GCSE Food & Nutrition •	25
GCSE French & Spanish •	26
GCSE Geography •	28
GCSE Graphic Communication •	29
GCSE History •	30
Level 1/2 Horticulture •	31
Level 1/2 Hospitality & Catering •	32
GCSE Information Communication Technology (ICT) •	33
BTEC Information Technology •	34
Level 1/2 Tourism •	35
GCSE Media & Film Studies •	36
GCSE Music •	37
BTEC Music Technology •	38
GCSE Physical Education •	39
GCSE Photography •	40
GCSE Product Design •	41
GCSE Religious Studies •	42
BTEC Leadership in Sport •	43
GCSE Textiles •	44
GCSE Triple Science (Biology, Chemistry, Physics) •	45

Welcome to Options Evening

Dear Student,

Options time is an important point in your education, as it is here that you get to choose some of the subjects that you will study for the next two years. We know that it can be a difficult time and can cause anxiety because there are a lot of questions that you might have: Which subject is right for me? What if I don't know what I want to do at all? Rest assured that we will help you to make choices about future learning that are right for you.



This booklet and the options process are designed to make this time less worrying for you and your parents/carers. They will help you to start making decisions about your learning and to choose subjects that suit your aspirations, skills and needs.

Please use all the information available to you: this booklet; advice from teachers; your tutors and your parents. All of these people know you in some way and may be able to suggest whether they think a subject would suit you as a learner. You will also be working on this in tutor time and may already have some firm ideas.

There will also be subject taster assemblies held during form periods, giving you an insight into the courses on offer from departments. There will be further opportunities to discuss option choices at Year 8 options evening, held in the summer term. Details of this will be circulated in due course.

We hope that the information allows you to make the right choices that will see you succeeding over the next two years and beyond.

Mr Mark Powell BA (Hons)
Headteacher

Welcome to Key Stage 4

You are now entering an important, new stage in your learning and you are now going to be choosing the subjects to be studied at GCSE.

There are some subjects that must be studied, these are called the **compulsory** subjects. For September 2018, the compulsory National Curriculum KS4 subjects are Mathematics, Numeracy, English, Welsh Baccalaureate and Science. Here at Aberdare Community School, the other compulsory elements are:

1. Religious Education (Short Course)
2. Welsh Language
3. Games
4. Pastoral and Social Education

All pupils must study science at Key Stage 4. However, you must decide how much science you wish to opt for. If you're interested in a career in the medical, engineering, architectural or sporting area – then you are advised to go for double or even triple science. Those who wish to study sports' science must have a good understanding of the human anatomy and double science is a sensible option for you.

A variety of optional courses are available for pupils which range from the traditional GCSE to the more vocational and applied courses. This booklet outlines all courses on offer and gives pupils a detailed description of each course.

You will be asked to select **ONE** subject from each of the option columns. It must be stated from the outset, that whilst every possible effort will be made to meet the option requirements of each individual pupil, this CANNOT BE GUARANTEED IN EVERY CASE, especially if a pupil's progress in a subject has been unsatisfactory and numbers in that option choice become unduly large. Moreover, certain options may be withdrawn if demand for that option is limited e.g. 12 pupils or less.

Pupils may NOT change options after September 2018.

Please note:

- 1) Pupils may wish to opt for triple science by opting for Science in option 1.
- 2) Pupils may be unfamiliar with certain subjects, information relating to these courses has been included in this booklet. If further information is required, department leaders can provide additional guidance.
- 3) It's not possible to take certain subjects where the overlap of content is deemed too great. e.g. GCSE ICT / BTEC ICT, BTEC Sports / GCSE PE. Pupils should try and choose a range of different subjects.
- 4) All other courses can only be chosen once. E.g. Geography cannot be chosen in more than one option column.

What do the Qualifications mean?

Qualifications and Credit Framework (QCF) sets out the levels against which a qualification can be recognised in England, Wales and Northern Ireland. This framework helps learners to make informed decisions about the qualifications they need, and help employers and providers assess what qualifications a candidate has. The QCF has nine levels, and sets out the basis on which qualifications are approved, so that it is easier to compare one type of qualification with another.

Qualifications are best understood by their level of difficulty, size and, of course, their content. Each accredited qualification has a level according to the qualifications framework it is on. Levels are a standard way of comparing how challenging a qualification is and what learners should be able to do once they have successfully completed it.

What are GCSE's?

GCSE

GCSE stands for 'General Certificate of Secondary Education'. These are academic qualifications that are recognised and valued by schools, colleges and employers so they will be useful whatever you are planning to do in the future. GCSEs involve studying the theory of a subject and usually include some investigation work. Some may also involve practical work. All GCSEs have examinations although some might have controlled assessments too; controlled assessments must be completed in class under the supervision of teaching staff.

Our GCSE's are 'Level 2' qualifications and are graded from A*-G.

What are Vocational Qualifications / BTEC's?

BTEC

BTEC (Business & Technology Education Council) qualifications are work-related or 'technical (vocational)' courses suitable for a wide range of learners. Like GCSE's, these are nationally recognised and have been designed to meet the needs of employers and allow progression to further study. They provide a practical, real-world approach to learning. Most BTEC subjects are assessed through coursework and have one examination. These courses are suitable for students who might not show their full potential in courses assessed through lots of examinations.

Our BTECs are 'Level 2' qualifications and usually graded as Pass, Merit, Distinction and Distinction*, although some courses offer a Pass or Fail option, with a Pass equivalent to a B grade.

Advice for Students

Who decides what I study?

Basically, **YOU** do.

We want you to choose the subjects that you want to do. Everyone is happier that way. But you need to think things out very carefully and remember all these points.

First, you must consult:

1. Your Parents
2. Your Teachers
3. Your Form Tutor
4. Your Head of Year

Secondly, you should think whether the option subjects you are choosing now fit in with what you will need for a further education or career choice in two, three or four years' time.

Thirdly, you must check all requirements of the course. *You will not be allowed to begin any option course if your levels at Key Stage 3 indicate that you will struggle with the content of the course.*

To help you to choose:

Each student in 9 will have a one-to-one discussion with their form tutor, a member of the senior leadership team or head of year. They will recommend you for a range of subjects and choices, which will fit your aspirations, achievements and potential.

You can also speak to our Careers Advisor, either in school or at the Parents' Evening. At ANY time, you can sign up for an appointment with a member of the careers team by visiting his office which is on Mynydd Floor. Our careers advisor is available every week from Tuesday – Friday. If your parents/carers would like to book an appointment to meet with the careers team too, please contact the school directly.

All of these people will have a very good idea of your abilities and the subjects that will give you a broad set of skills that you will need for future success.

Top Tips for Choosing Subjects

You should remember these:

DO

- DO choose subjects which you like
- DO choose subjects at which you are successful
- DO choose subjects which you may need for a career or further education
- DO find out everything that you can about the subject before you choose it. Once you have started a subject we expect you to stick with it.
- DO talk to the people who know you
- DO listen to the advice your subject teachers give you

DO NOT

- DON'T choose a subject just because your friend has chosen it
- DON'T choose a subject just because you like - or dislike - a particular teacher, they may not end up teaching you

What happens once options have been chosen?

- All options forms have to be handed to your form tutor by Monday 19th February.
- You will meet with your head of year if there is a significant problem with your choices.



Extended Learning & Provision

Duke of Edinburgh Award Scheme (DofE)

All pupils in year 9 and above are offered the opportunity to participate in the Duke of Edinburgh Award Scheme.

The Duke of Edinburgh (DofE) award scheme is offered at Bronze, Silver and Gold level and is available to all learners at Key Stage 4. The DofE Award is the world's leading youth achievement award, giving millions of 14+ year olds the opportunity to develop a range of personal skills through volunteering, participating in physical activities and developing communication and team working skills by planning for and participating in an expedition. These expeditions usually take place in the summer term and involve an over-night stay on the Gower Coast. The length of these activities varies depending on the size of the award.



ACS has seen a 100% Pass rate from all past pupils opting to participate in the DofE award scheme. DofE pupils meet on a weekly basis and can participate in a series of activities of their choice. Pupils will learn a new skill in a chosen sector, for example learning a new language, learning to cook and learning to play a new sport to name a few. The DofE is a popular award at ACS and may carry a maximum number of participants should demand be too high.

Contact: Mrs Stacey Lyons, DofE Leader or
Mr M Hills, DofE Assessor.

Social Media
@ACSDofE



A Typical Ks4 Timetable

A typical timetable at key stage 4 will consist of the following, however these may vary slightly for each individual pupil. Each timetable is personalised to every pupil's needs and abilities.

Mathematics	8 Hours
English	8 Hours
Welsh Language	3 Hours
Welsh Baccalaureate	3 Hours
Religious Studies (Short Course)	2 Hours
Science (Double Award)	8 Hours
Option Subject 1	4 Hours
Option Subject 2	4 Hours
Option Subject 3	4 Hours
Option Subject 4	4 Hours
Games	2 Hours

The following pages provide a breakdown of each subject, including compulsory and optional subjects. A summary at the top of each page provides information on whether each subject is compulsory, a GCSE or a vocational option. Should you have any further questions regarding each individual subject, please speak to the subject contact listed on each page.



Welsh Baccalaureate ●

- ☒ CORE COMPULSORY
- ☐ GCSE OPTION
- ☐ VOCATIONAL OPTION

Specification: WJEC

Grading: A* - G

Subject Contact: Mrs C Smith, *Leader of Learning Welsh Baccalaureate*

Course Description

The Welsh Baccalaureate is an exciting qualification that adds a valuable dimension to the subjects and courses already available to 14-19 year old students. It combines personal development skills with existing GCSE's to make one wider award that is valued by employers and universities. By adding personal development skills to vocational qualifications or academic study, the Welsh Baccalaureate helps young people achieve more. It makes them better equipped for the world of work, better informed and more active citizens. A Welsh Baccalaureate qualification is also proof that a student has developed skills considered important by employers and universities and shows they have furthered their personal and social education.

In response to Welsh Government's review of Qualifications, studying the Welsh Baccalaureate results in a GCSE graded qualification called the Skills Challenge Certificate.

Assessment

The core of the Welsh Baccalaureate has a clear focus on the following skills: Literacy, Digital Literacy, Numeracy, Critical Thinking and Problem Solving, Planning and Organisation, Creativity and Innovation and Personal Effectiveness. Skills will be developed, applied and assessed through the completion of four challenges, these are:

- The Individual Project Challenge – **50%** of Qualification
- Global Citizenship Challenge – **15%** of Qualification
- Enterprise and Employability Challenge – **20%** of Qualification
- Community Challenge – **15%** of Qualification

These are teaching and learning modules, each with an externally moderated controlled assessment element at the end of each programme of study.

Entry Requirements

n/a

Further Education Opportunities

Studying the Welsh Baccalaureate will equip pupils with the skills needed to study any further education course.

Careers

The Welsh Baccalaureate qualification can be linked to any career, due to the nature of the skills-based course.

Enrichment & Support

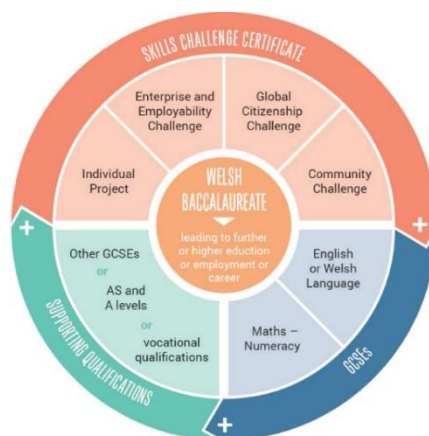
Weekly after-school and lunchtime sessions. Educational visits include trips to the Senedd, Cardiff Bay, Universities, BBC Wales to name a few.

Why study the Welsh Baccalaureate?

At Aberdare Community School we are endeavouring to make the new Welsh Baccalaureate a unique and bespoke qualification which reflects the pupil's area of interest. We have many organisations on board to deliver parts of the course such as Cardiff City FC, the WRU, The Welsh Fire and Rescue Service, Lloyds Bank and CITB, to name only a few.

If pupils pass the new Numeracy and Literacy GCSE's, 3 other GCSE's *plus* the Skills Challenge Certificate at GCSE level they will **also** get the National Level Welsh Baccalaureate.

If pupils do not pass their Numeracy and Literacy GCSE's or their 3 other C grade or above GCSE's then they will not get the National Welsh Baccalaureate but can still pass the Skills Challenge Certificate GCSE. Pupils will be taught by a Welsh Baccalaureate Tutor. They will have four fortnightly lessons as per all the other GCSE option lessons.



Further information can be found at www.wjec.co.uk/qualifications/welsh-baccalaureate

Social Media
@ACSWelshBacc





GCSE English Language ●

- ☒ CORE COMPULSORY
- ☐ GCSE OPTION
- ☐ VOCATIONAL OPTION

Specification: WJEC

Grading: A* - G

Subject Contact: Mr A Mee, *Leader of Learning English*

Course Description

GCSE English Language will help you to develop your ability to use English in real life contexts. The course involves assessment of three different aspects of English: Reading, Writing and Oracy.

Assessment

Unit 1: Individual Researched Presentation: One individual, researched presentation, which may include responses to questions and feedback, based on WJEC set themes. Responding and Interacting - One group discussion to written and/or visual stimuli provided by WJEC to initiate the discussion. Candidates are expected to show that they can participate in oral activities with others in order to express and corroborate an opinion.

Unit 2: Reading and Writing: Description, Narration and Exposition. Candidates will be tested on their understanding of at least one description, one narration and one exposition text with a thematic link, assessed through a range of structured questions. Candidates will complete one writing task from a choice of two that could be either description, narration or exposition.

Unit 3: Reading and Writing: Argumentation, Persuasion and Instructional. Candidates will be tested on their understanding of at least one argumentation, one persuasion and one instructional text with a thematic link, including continuous and non-continuous texts, assessed through a range of structured questions. This exam will also test candidates' writing through one compulsory argumentation writing task and one compulsory persuasion writing task.

Entry Requirements

All pupils study English Language. Pupils are placed into classes based on their ability.

Further Education Opportunities

GCSE English Language is needed for most courses students will take in the future. Many employers expect young people to have at least a C grade and to demonstrate effective communication skills. Students who achieve a B grade, or above, can progress onto A Levels in English Literature or English Language and Literature.

Careers

English is a core subject and may be studied as a separate course at A level and University. Possible jobs include: Digital copywriter, Editorial Assistant, Lexicographer, Magazine Journalist, Newspaper Journalist, Publishing Copy-editor, Proofreader, Web Content Manager, Writer, Marketing Executive, Public Relations Officer, Secondary School Teacher.

Enrichment & Support

Exam support sessions offered weekly. Focused revision sessions will be offered nearer to the exam.

Social Media
@ACSEnglishDept





GCSE English Literature ●

- ☒ CORE COMPULSORY
- ☐ GCSE OPTION
- ☐ VOCATIONAL OPTION

Specification: WJEC

Grading: A* - G

Subject Contact: Mr A Mee, *Leader of Learning English*

Course Description

GCSE English Literature will encourage students to develop knowledge and skills in reading, writing and critical thinking. Through literature, students have a chance to develop culturally and acquire knowledge of the best that has been thought and written. Studying GCSE English Literature should encourage students to read widely for pleasure. GCSE English Literature is broken down into three units.

Assessment

Unit 1: Prose (Different Cultures) and Poetry (Contemporary) - 35% of Qualification

Assessed by: 2 hour external exam at the end of Year 10. You will be required to answer 2 questions on a set text; one extended essay /20 and one question on an extract from the text /10. You will also have to answer a question about two poems linked by a similar theme /20.

Unit 2: Prose and Drama texts - 40% of Qualification

Assessed by: 2 hour external exam at the end of Year 11. You will be required to answer 2 questions on a prose text and 2 questions on a drama text; two extended essays /20 each and two questions on an extract from each of the texts /10 each.

Unit 3: Poetry and Drama linked texts - 25% of Qualification

Assessed by: Controlled Assessment in the Spring Term of Year 10. (4 hours).

You will be required to write an extended essay about a Shakespeare play and poetry you have read from a WJEC anthology.

Entry Requirements

All pupils study English Language. Pupils are placed into classes based on their ability.

Further Education Opportunities

Students who achieve a B grade, or above, can progress onto A Levels in English Literature, English Language and Literature and Creative Writing.

Careers

English Literature may be studied as a separate course at A level and University.

Enrichment & Support

Exam support sessions offered weekly. Focused revision sessions will be offered nearer to the exam.

Social Media
@ACSEnglishDept





GCSE Mathematics (Double Award) ●

- ☒ CORE COMPULSORY
- ☐ GCSE OPTION
- ☐ VOCATIONAL OPTION

Specification: WJEC

Grading: A* - G

Subject Contact: Mrs N Innes, *Leader of Learning Mathematics*

Course Description

All pupils will study both GCSE Mathematics and GCSE Numeracy at GCSE Level. This will result in them gaining two separate GCSEs in the subject. Both are compulsory at GCSE level. In Year 10 pupils are placed in one of 3 tiers, Higher, Intermediate and Foundation. There is flexibility and pupils can be moved between these tiers. The grades available at each tier of entry are:

Higher Tier: Grades A* - C;

Intermediate Tier: Grades B - E

Foundation Tier: Grades D - G.

Assessment

GCSE Numeracy-Mathematics.

Unit 1: Non Calculator (50%)

Unit 2: Calculator allowed (50%)

Each paper will last:

-Higher & Intermediate, 1 hour 45 mins

-Foundation, 1 hour 30 mins

GCSE Mathematics.

Unit 1: Non Calculator (50%)

Unit 2: Calculator allowed (50%)

Each paper will last:

-Higher & Intermediate, 1 hour 45 mins

-Foundation, 1 hour 30 mins

GCSE	Mathematics-Numeracy	Mathematics
Content	Number, Measure and Statistics plus some aspects of Algebra, Geometry and Probability	All the content of GCSE Mathematics - Numeracy Additional Algebra, Geometry and Probability
Assessment Focus	The application of the above content in context, - numeracy will assess the mathematics that learners will need in their everyday lives, in the world of work, and in other general curriculum areas	The application of the above content in context
		Procedural skills in situations that are context-free or involve minimal context for all content. GCSE Mathematics will extend to aspects of mathematics needed for progression to scientific, technical or further mathematical study.

Entry Requirements

n/a – all pupils will be set into classes based on their ability.

Further Education Opportunities

GCSE Mathematics provides access to numerate AS and A Levels, such as: Mathematics, Further Mathematics, the Sciences, Geography and other qualifications which require mathematical skills, knowledge and understanding.

Careers

Accountancy, Business, Computing, Communications, Construction, Engineering, Government (e.g. GCHQ), Finance, Healthcare, Insurance, Manufacturing, Media, Operational Research, Recruitment, Academic Research, Sciences and more.

Enrichment & Support

Exam revision sessions. Additional Maths offered to gifted mathematicians. Educational visits to Royal Mint and PGL.

Additional Mathematics

Pupils in Y10 and Y11 have the opportunity to study Additional Mathematics as an after school club. A written 2½ hour paper is designed to stretch the most able candidates for GCSE Mathematics. It also provides an appropriate and fulfilling course for those are planning to follow a mathematics course at AS and A level. It is also envisaged that the course will strengthen the formal techniques necessary for further study and hence narrow the perceived gap between GCSE and post-16 qualifications. The scheme is not tiered and a candidate's result will be reported as distinction, merit or pass. Candidates failing to achieve a pass will not receive an award.

Social Media
@ACSMathsDept





GCSE Science (Double Award) ●

- ☒ CORE COMPULSORY
- ☐ GCSE OPTION
- ☐ VOCATIONAL OPTION

Specification: WJEC

Grading: A* - G

Subject Contact: Mrs J Nicholls, *Leader of Learning Science*

Course Description

Pupils who take GCSE Science will acquire 2 different science grades at the end of year 11 – a double award science qualification ranging from A*A* to GG. The grades awarded are consequently independent of each other. There are 2 tiers of papers: Foundation (C – G grades) and Higher (A* -D grades). Students will be entered for the tier that matches their performance and progress.

Assessment

External written examination papers and practical assessments.

Unit 1 Biology External Examination – Summer Year 10

Unit 2 Chemistry External Examination – Summer Year 10

Unit 3 Physics External Examination - Summer Year 10

Unit 4 Biology External Examination – Summer Year 11

Unit 5 Chemistry External Examination – Summer Year 11

Unit 6 Physics External Examination - Summer Year 11

Unit 7 Internal Practical Task – Spring Year 11

Entry Requirements

All pupils not opting for GCSE Triple Science will automatically be entered for Double Award Science

Further Education Opportunities

This qualification will enable students to complete Level 3 science qualifications such as A-level Sciences or Level 3 BTEC's.

Careers

Biotechnology, Chemical Engineering, Pharmacology, Medical Sciences, Forensic Sciences, Engineering, Veterinary Sciences, Sports Sciences, and more.

Enrichment & Support

Science challenges and trips. Revision support sessions.

Social Media
@ACS_Science





GCSE Welsh 2nd Language ●

- ☒ CORE COMPULSORY
- ☐ GCSE OPTION
- ☐ VOCATIONAL OPTION

Specification: WJEC

Grading: A* - G

Subject Contact: Miss S Frederick, *Leader of Learning Welsh*

Course Description

All pupils In Key Stage 4 study GCSE Welsh 2nd language. The study of Welsh gives the student an increasing awareness of the many uses of the Welsh Language in contemporary Wales and the opportunity to partake in different aspects of Welsh life. The GCSE in Welsh 2nd language encourages learners to study Welsh with interest, enjoyment and enthusiasm, whilst enabling them to use Welsh outside of the classroom and in their day to day lives.

Assessment

- Unit 1 (25%): Speaking examination – Oracy response to visual material.
- Unit 2 (25%): Speaking examination – Communicating with others.
- Unit 3 (25%): Reading and writing examination – 1 hour and 30 minutes.
- Unit 4 (25%): Reading and writing examination – 1 hour and 30 minutes.

Entry Requirements

Welsh is a core subject at GCSE and studied by all pupils. Pupils are placed into classes according to their ability in Welsh.

Further Education Opportunities

Pupils will wish to study for AS/A2 examinations and may wish to progress to further study at colleges and universities. The study of the Welsh language also allows the students to increase their involvement and appreciation of the culture and literature of Wales.

Careers

A study of the Welsh Language offers a wide range of possibilities to the student. Welsh is desirable and of great practical use if one wishes to have a job in teaching, administration, journalism or broadcasting and is highly valued in the pursuit of other courses and training. Knowledge of the language is extremely useful for different personal and social needs, in a country where there is an increasing demand for bilingualism and a competitive job market. It can be studied alongside other languages or such subjects as History, where a knowledge of Welsh can be beneficial.

Enrichment & Support

Welsh Club. Revision sessions available on a weekly basis. Opportunity to be Welsh ambassadors within the school. Educational visits to Llangrannog and Glan Llyn.

Social Media
@CymraegACS





GCSE Art & Design ●

- ☐ CORE COMPULSORY
- ☒ GCSE OPTION
- ☐ VOCATIONAL OPTION

Specification: WJEC

Grading: A* - G

Subject Contact: Mr N Comerford, *Leader of Learning Art*

Course Description

GCSE Art & Design contains a mixture of internally and externally assessed units. Internal units are assessed using a candidate portfolio. Four coursework units, internally set and developed from personal and/or given starting points. Sketchbooks are an integral part of the work and are essentially concerned with enquiry, experimentation and research. The external element of the course is completed under controlled conditions, where candidates must meet a series of assessment objectives.

Assessment

Candidate portfolio – 4 units of work – **120** Marks

Externally set task – **80** marks

Entry Requirements

Good artistic skills. Level 5+ Art KS3.

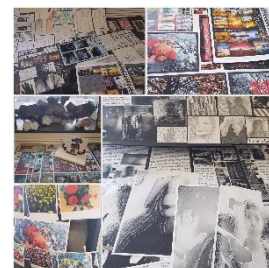


Further Education Opportunities

After gaining a GCSE in Art & Design, pupils may consider sitting an A-level course. This may be followed by an art college foundation course of 1 year and a 3 years BA Hons degree course in a range of Art specialism areas.

Careers

Architecture, Graphic Communications, Teaching, Media, Film, Illustration, Fashion Design, Interior Design, Set Design, Landscaping, Advertising.



Enrichment & Support

After-school intervention sessions. Year 10 trip run to Pitt Rivers Museum, Oxford.

Why should I choose this subject?

Some people hold the view that studying Art and Design is only for would-be painters and sculptors. This ignores the fact that this subject is **needed** by people who become designers for books, magazines, furniture, house interiors, theatres, medical and kitchen equipment, jewellery, fashion wear, fabrics, room interiors and architecture.

Apart from the career opportunities, you could choose to study GCSE Art and Design because you enjoy it. It can help you balance your subjects between those that are purely academic and those that are more creative. You may not be 'brilliant' at drawing and painting but it is more important at this stage that you are interested in the subject and are prepared to work very hard at it. Ask your Art and Design teacher if they think you are capable of the course.

Social Media
@ACS_Art





GCSE Business Retail ●

- ☐ CORE COMPULSORY
- ☐ GCSE OPTION
- ☒ VOCATIONAL OPTION

Specification: WJEC

Grading: Pass / Merit / Distinction / Distinction*

Subject Contact: Mr M Hills, *Leader of Learning Computing & Information Technology*

Course Description

This vocational course is assessed through two controlled assessments and one written exam. Unit 1 focusses on customer experiences in a retail organisation, where you will learn about principles of customer service and how important customers are to retail organisations. In Unit 2, you will propose business solutions for a range of issues in the retail sector. In the final unit, you will apply your knowledge of retail operations to propose responses to change.

Assessment

Unit 1: Customer Experience – Controlled Assessment – **25%**

Unit 2: Retail Business – Written Exam – **25%**

Unit 3: Retail Operations – Controlled Assessment – **50%**

Entry Requirements

Level 5+ in Maths at KS3. Good level of English. Strong interest in Business operations.

Further Education Opportunities

Level 3 courses in Business Management, Finance, Marketing, Administration, ICT.

Careers

Careers that can be directly linked to business studies include finance, business administration, personnel, sales and marketing.

Enrichment & Support

Competitions include the £10 Challenge, pupils are given £10 and must make the most money possible. The department offers after-school tuition on a Thursday for all aspects of the course. Presentations from industry leading experts on Retail Management including Marks and Spencers, NEXT and Tesco.

Why should I choose this subject?

This vocational qualification is the ideal course for any pupil wanting a career in the retail industry. The structure of the qualification offers pupils a learning experience that focuses on applied learning, i.e. acquiring and applying knowledge, skills and understanding through purposeful tasks that have many characteristics of real work. The structure of the qualification enables pupils to build on prior knowledge by working through project based assignments. This course is ideal for anyone interested in how retail organisations operate on a day-to-day basis.

Social Media
@ACSBusiness





GCSE Child Development ●

- ☐ CORE COMPULSORY
- ☒ GCSE OPTION
- ☐ VOCATIONAL OPTION

Specification: WJEC

Grading: A* - G

Subject Contact: Mrs S Jones

Course Description

You will study topics on the family and the child, food and health, pregnancy and physical, intellectual, social and emotional development. You will learn to observe and interact with young children, carry out individual, original research and explore and investigate the needs of young children.

Assessment

Candidates will complete two controlled assessments. A child study, worth 30%, includes six hours of observation of a child under the age of five. This will be completed during fifteen hours of class time. A child focused task, also worth 30%, includes researching, planning, making and evaluating of a topic set by the WJEC; this will be completed in 15 hours of class time. There is one examination, worth 40%, targeted at the full range of GCSE grades.

Entry Requirements

Ability to work independently and be able to manage time effectively to meet deadlines.

Further Education Opportunities

You could go on to take either BTEC or A Level Health and Social Care. This course also develops the skills needed for any Humanities A-Level course. This course leads to degrees in primary education.

Careers

Opportunities include nursery nurse, nanny, nurse, midwife, teacher, social worker, working with children with additional needs, physiotherapist and play group leader.

Enrichment & Support

After-school club available on a weekly basis.

Why should I choose this subject?

Do you enjoy working with children? Would you like a practical challenge? Are you interested in finding out about child development issues? Have you or will you be able to have access to study a child under 5 years? If you have answered YES to these questions, then choose to study GCSE Child Development.

Social Media
@ACS_DT





GCSE Computer Science ●

- ☐ CORE COMPULSORY
- ☒ GCSE OPTION
- ☐ VOCATIONAL OPTION

Specification: WJEC

Grading: A* - G

Subject Contact: Mr M Hills, *Leader of Learning Computing & Information Technology*

Course Description

With Computer Science at the heart of governmental plans for future economic growth and security, and over 50% of jobs now requiring some level of computer skills, this qualification is ideally suited for those students wishing to improve their expertise in this field. The course includes elements of cyber security, networks, data handling and programming, as well as examining the ethical, legal and environmental impacts of digital technology. Students taking the course develop excellent computational thinking skills as well as improving their theoretical knowledge and problem solving.

Assessment

Unit 1: Understanding Computer Science - Written Exam – 1 Hour 45 mins - **50%**

Unit 2: Computational Thinking & Programming - Practical Online Exam – 2 Hours – **30%**

Unit 3: Software Development - Controlled Assessment – 20 Hours – **20%**

Entry Requirements

Level 6+ in Maths and Science at KS3. Good level of English. Strong interest in Coding.

Further Education Opportunities

This course is an ideal choice for those considering further studies in Computing, such as A- Levels and Degrees. Many students also go on to study vocational computing related options at college. Programming is also a very useful skill for those aspiring to undertake research in the future.

Careers

There are many Computing career paths including games designer, software engineer, networks, cyber security, systems analyst, IT support, web developer, business support and operations manager.

Enrichment & Support

There are many online communities which offer enrichment opportunities in the subject including advanced tutorials in programming. Competitions include the National UK Computational Thinking Challenge. The department organises an annual trip to visit the National Museum of Computing in London. The department offers after-school tuition on a Thursday for all aspects of the course.

Why should I choose this subject?

The course will give you an in-depth understanding of how computer technology works and a look at what goes on 'behind the scenes'. As part of this, you will investigate computer programming and develop understanding of current and emerging digital technologies.

Social Media
@Computing_ACS





Level 1/2 Construction ●

- ☐ CORE COMPULSORY
- ☐ GCSE OPTION
- ☒ VOCATIONAL OPTION

Specification: WJEC

Grading: Level 1 PASS / Level 2 PASS - DISTINCTION

Subject Contact: Miss C Roberts

Course Description

You will gain the knowledge and understanding to be able to plan how to minimise risk to your own and others health and safety in different contexts. You will also be able to interpret technical information to plan the refurbishment of a building, taking account of health and safety issue and you will use appropriate skills and techniques to carry out the refurbishment. You will then use all prior learning to plan straightforward built environment projects.

Assessment

One online exam testing knowledge on safety and security in construction.

Two internally assessed units on practical construction skills and planning construction projects. Each unit is marked separately and the final grade is based on the total score of the three units combined.

Entry Requirements

You must also have an interest in developing practical skills and using traditional workshop tools and machinery, as well as developing skills in using emerging technology to design and make products.

Further Education Opportunities

Many colleges offer various construction courses at a range of levels to allow you develop your knowledge further.

Careers

If you are interested in working in various trades (joiners, bricklayers), site management (supervisors) or project management then this course will provide you with beneficial skills.

Enrichment & Support

After-school club available on a weekly basis.

Why should I choose this subject?

If you think you would seek employment in the construction industry then this is the course for you. It will allow you the opportunity to develop an awareness of the construction industry and how the various trades people, supervisors and project managers work together to completed varied projects.

Social Media

@ACS_DT





Employability Skills ●

- ☐ CORE COMPULSORY
- ☐ GCSE OPTION
- ☒ VOCATIONAL OPTION

Specification: ASDAN

Grading: Pass (B Grade GCSE Equivalent)

Subject Contact: Mrs L Wooller, *Leader of Learning CoPE & Enterprise*

Course Description

This vocational course blends activities pupils undertake in their traditional GCSE subjects with investigative activities (skill) based projects. There is an emphasis on rewarding pupils for completing challenges and each pupil builds a portfolio of evidence. Pupil experiences together with a set of challenges combine to form the Certificate of Personal Effectiveness.

Assessment

100% assessed through creating a portfolio of evidence. Pupils produce a portfolio of evidence that builds together to contribute to the qualification. Each pupil portfolio will consist of 12 tasks (challenges) at level 1 or 2. When combined together, these elements make up the CoPE qualification. Pupils will be required to keep records and take responsibility for gathering the evidence of the work they have completed. There is no formal examination and all grades are awarded on the standards achieved in the 12 challenges completed.

Entry Requirements

Level 4+ at Key Stage 3.

Further Education Opportunities

The course is designed to prepare pupils for a more independent style of learning, in some cases it helps prepare pupils who wish to leave school at 16 and take up college courses or apprenticeships. There is also a strong emphasis on the development of key skills required by employers. Pupils will be encouraged to develop a variety of skills including: planning, research, working with others, discussion, problem solving and evaluation of their work.

Careers

This qualification provides the ideal stepping stone to any career, as you develop a range of skills demanded by employers through studying this qualification.

Enrichment & Support

An opportunity to meet with a range of employers through lectures and workshops.

Why should I choose this subject?

This course is perfect for those pupils who learn best through developing skills through team-work, communication, problem solving and carrying out effective research. Pupils are able to study a range of topics based on their personal interests.

Social Media
@AberdareSchool





GCSE Drama ●

- ☐ CORE COMPULSORY
- ☒ GCSE OPTION
- ☐ VOCATIONAL OPTION

Specification: WJEC

Grading: A* - G

Subject Contact: Miss K Walker, *Leader of Learning Performing Arts*

Course Description

GCSE Drama offers the opportunity to study and experience all aspects of theatre, including:

- Watching live performance during theatre trips
- Expressing yourself and your ideas in a creative way
- Exploring different characters, scenarios and situations
- Creating your own drama work
- Developing technical skills in the Drama studio



Assessment

Unit 1: Devising Theatre Non-exam assessment: internally assessed - **40%**

Unit 2: Performing from a Text Non-exam assessment: externally assessed - **20%**

Component 3: Interpreting Theatre Written examination: 1 hour 30 minutes - **40%**

Entry Requirements

Strong interest & confident in acting & performing. Level 5+ at KS3.

Further Education Opportunities

A-Level Drama at ACS. FE courses/ degrees in Performing Arts.

Careers

Drama can improve your confidence and communication skills to help you in any job such as: Journalism, retail, arts, Teaching, TV, broadcasting, health, law and many more.



Enrichment & Support

You can become involved in extra-curricular activities such as the school production or shorted plays. We also run trips to the theatre to work on stage and watch professional performers.

Why should I choose this subject?

If you have a passion for acting and performing in the Drama studio, this course is for you! Perhaps you have enjoyed working with the technical equipment and would like to develop your skills further? It's also a great course to make new friends, gain new experiences, work hard and have fun.

Social Media
@ACS_PerformArts





BTEC Engineering ●

- ☐ CORE COMPULSORY
- ☐ GCSE OPTION
- ☒ VOCATIONAL OPTION

Specification: PEARSON

Grading: *Pass / Merit / Distinction / Distinction**

Subject Contact: Miss C Roberts

Course Description

Engineering gives you the opportunity to gain a broad understanding and knowledge of the engineering sector, as well as an opportunity to develop a range of personal skills and techniques. It will provide you with the practical skills that reflect the needs of employers and higher or further education.

Assessment

Engineering gives you the opportunity to gain a broad understanding and knowledge of the engineering sector, as well as an opportunity to develop a range of personal skills and practical techniques. The main focus is on four areas of equal importance, which cover the:

- development of key engineering practical and technical skills, such as research, observation, measurement, making, using computer-aided design (CAD) and disassembly
- knowledge of key engineering sectors (mechanical, electrical/electronic and engineering design) and the interrelation of each in industry
- knowledge of the stages involved in planning and implementing an engineering project
- knowledge and skills involved in the investigation of solutions to engineering problems

Entry Requirements

A good level of knowledge in ICT, Science, Mathematics and English would be beneficial and will be utilised throughout the different units. You must have the ability to think creatively to solve problems as well as produce your own design ideas. You must also have an interest in developing practical skills and using traditional workshop tools and machinery, as well as developing skills in using emerging technology to design and make products.

Further Education Opportunities

You can develop your knowledge further at Level 3 Engineering or even A Level Design and Technology. University can then be one of the directions to go further into the subject.

Careers

Biotechnology, Chemical Engineering, Physics, Sciences, Forensic Sciences, Mechanical Engineering, Aerospace Engineering plus many more.

Enrichment & Support

After-school club available on a weekly basis.

Why should I choose this subject?

Engineering is about the design and production of useful products and services. Engineering know-how converts scientific knowledge in technology and then technology into successful innovation.

Social Media
@ACS_DT





GCSE Food & Nutrition ●

- ☐ CORE COMPULSORY
- ☒ GCSE OPTION
- ☐ VOCATIONAL OPTION

Specification: WJEC

Grading: A* - G

Subject Contact: Mrs R Marchant

Course Description

GCSE Food and Nutrition gives you an opportunity to prepare and cook a variety of dishes using different cooking techniques and equipment. You will develop a knowledge and understanding of the functional properties and chemical characteristics of food. It will provide you with an understanding of the relationship between diet, nutrition and health and an opportunity to demonstrate a knowledge and understanding of functional and nutritional properties, sensory qualities and microbiological food safety considerations when preparing, processing, storing, cooking and serving food.

Assessment

You will be required to complete two controlled assessments.

A Food Investigation Task, worth 20%, includes researching, investigating, analysing and evaluating ingredients. This will be completed during ten hours of class time. A Food Preparation Assessment, worth 40%, includes researching, planning making and evaluating a menu of three dishes. This will be completed in 15 hours of class time. There is one examination, worth 40% targeted at a full range of GCSE grades.

You will also be expected to participate in practical lessons weekly to develop your skills in preparation for these assessments. It is a requirement that pupils provide their own ingredients for these lessons.

Entry Requirements

Good prior achievement in Technology at KS3. Ability to work independently and be able to manage time effectively to meet deadlines.

Further Education Opportunities

You could go on to take BTEC Level 3 Hospitality. It will prepare students for further training or employment in the dynamic hospitality and catering industry. The most popular route is to pursue vocational courses at specialist catering colleges.

Careers

The food industry is a major growth industry in the UK and employs Food Technologists, Dieticians and Buyers. There are also wide ranging careers in the catering industry as well as in publishing and the media.

Enrichment & Support

After-school club available on a weekly basis. Opportunity to participate in open evenings and events.

Why should I choose this subject?

You should choose to study this course if you enjoy working with food and have a real interest in learning the skills required to cook a variety of dishes and gaining a knowledge of the principles of food science, nutrition and healthy eating. It is a suitable qualification for those who want a broad background in this area and for those who wish to progress to further education.

Social Media
@ACS_DT





GCSE French & Spanish ●

- ☐ CORE COMPULSORY
- ☒ GCSE OPTION
- ☐ VOCATIONAL OPTION

Specification: WJEC

Grading: A* - G

Subject Contact: Mrs D Hope, *Leader of Learning MFL*

Course Description

GCSE French and Spanish are offered as two separate optional subjects at GCSE. Pupils will learn how to understand much of the languages written and spoken in France and/or Spain and express themselves in speech and writing on a range of topics, giving opinions and seeking information, explaining and describing.

Some of these topics (such as school and holidays) will already be familiar to pupils. These are studied in greater depth, together with new topics such as the environment & work experience.

The course is centred around the series of Expo/listos textbooks which pupils have already used in key stage 3 and will include the use of DVD's, computers and i-pads.

Assessment

Both courses are assessed through the four communication skills – writing, speaking, listening and reading are assessed individually. All papers carry an equal weighting of 25% and a pupil can be entered at foundation or higher level in each of the skills.

Component 1: Listening & Understanding - **25%**

Component 2: Speaking (Internally conducted & externally assessed – **25%**

Component 3: Reading & Understanding – **25%**

Component 4: Writing – **25%**

Entry Requirements

It's desirable to have a Level 5+ French/Spanish at the end of KS3, plus Good literacy and oracy skills.

Further Education Opportunities

Because of the richness of skills entailed by learning a language, University admission tutors look very favourably on candidates with Language skills and some universities are demanding a GCSE language as a prerequisite for entry, regardless of the course.

Careers

Careers in companies with international links. Language skills are highly regarded because the skills listed above are so transferable.

Enrichment & Support

Revision support sessions. Educational visit to France and/or Spain to develop your communication skills.

Why should I choose a modern foreign language?

Although we like to think of English as the international language, we need to think carefully before we decide that it is the only language we need to know. Consider the following points:

- ✓ European citizens have the right to live and work in any other country in the European Union. Full advantage could be taken of this opportunity with the ability to speak another language.
- ✓ Many courses in further and higher education now have a European element to them. They include mechanical engineering and a modern foreign language, biochemistry and a modern foreign language, business and a modern foreign language, even mathematics and a modern foreign language ... and there are many more. A foreign language, to at least GCSE level, is needed for these courses.
- ✓ Businesses in this country need people who can communicate in other languages at all levels. A study undertaken by the Department of Trade and Industry revealed that *'lack of a foreign language had been a barrier to trade'*. This means that firms are losing valuable business because they do not speak other languages.
- ✓ The majority of young people in other European countries continue their study of a foreign language until they are eighteen years old. In some countries two foreign languages are compulsory. Is this perhaps why, according to the Association of Language Learners *'... the British are losing jobs to foreigners because of their poor language skills'*?
- ✓ Familiarity with one foreign language, and the skills mastered in learning it, are of great benefit when it comes to acquiring another foreign language. Who knows what languages will be needed in the future?

Social Media
@AberdareMFL





GCSE Geography ●

- ☐ CORE COMPULSORY
- ☒ GCSE OPTION
- ☐ VOCATIONAL OPTION

Specification: WJEC

Grading: A* - G

Subject Contact: Mr S Alexander, *Leader of Learning Geography*

Course Description

This course gives students the opportunity to understand more about the world, the challenges it faces and their place within it. Geography enables young people to become globally and environmentally informed and thoughtful, enquiring citizens.

Assessment

Unit 1: Core Themes – Changing Landscapes in Wales & Rural and Urban Areas of Wales – Written exam - **40% of qualification**

Unit 2: Environment and Development Issues – Climate change, wild weather and eco-system impacts, development of poverty around the world and poverty in lower income countries – Written exam – **40% of qualification**

Unit 3: - Fieldwork Enquiry – **20% of qualification**

Entry Requirements

Good prior achievement and progress in Geography, Maths and English is required.

Further Education Opportunities

Pupils may take AS and A Level Geography if they meet the entry requirements.

Careers

Teaching, Engineering, Town Planning, Aviation, Government, Geology, Tourism, Armed Forces, Nature conservation and more.

Enrichment & Support

Revision support sessions. There is an additional optional opportunity to visit either Italy or Iceland to study volcanoes and earthquakes.

Why should I choose this subject?

This is a fantastic opportunity to build on your knowledge about our world in the 21st Century. This is a brand new specification with a wide range of topics and issues that face us in our rapidly changing world.



Social Media
@ACSGeography





GCSE Graphic Communication ●

- ☐ CORE COMPULSORY
- ☒ GCSE OPTION
- ☐ VOCATIONAL OPTION

Specification: WJEC

Grading: A* - G

Subject Contact: Miss L Webb, *Leader of Learning Technology*

Course Description

The course gives you an opportunity to design a range of products which could include illustration, animation, apps and games, advertising, typography, photography and packaging. You will also explore the work of historical and contemporary graphic designers.

Assessment

Unit 1: Portfolio - 120 marks (60%)

Three coursework units that are internally set and developed from personal and/or given starting points. Your portfolio requires evidence of how you have met each of the assessment objectives. Sketchbooks are an integral part of the work and are essentially concerned with enquiry, experimentation and research.

Unit 2: Externally Set Assignment - 80 marks (40%)

One externally set task (6 weeks preparatory period, 10 hours maximum Controlled Test under supervised examination conditions), which requires:

- A sustained period of focused study of no longer than 10 hours.
- Evidence of how you have met each of the assessment objectives.

Entry Requirements

Good prior achievement in Technology at KS3. Ability to work independently and be able to manage time effectively to meet deadlines. You also need a level of creativity.

Further Education Opportunities

You may wish to study Graphic Communication or Art based A Levels and then study for a design related degree.

Careers

Graphic Communication can help with careers in interactive media, printmaking, advertising, animation, visual communication. A design based GCSE is useful for any career where an artistic and creative input is required.

Enrichment & Support

After-school sessions available on a weekly basis.

Why should I choose this subject?

If you are interested in designing, illustration, interactive design or the branding of products this course will suit you. You do not need to be an 'artist' or excellent at drawing to study this; if you have strong computer skills then these can be used in this course as well as freehand sketching and designing skills. It is a flexible course where you can play to your strengths.

Social Media
@DT_ACS





GCSE History ●

- ☐ CORE COMPULSORY
- ☒ GCSE OPTION
- ☐ VOCATIONAL OPTION

Specification: WJEC

Grading: A* - G

Subject Contact: Mr N Keeble, *Leader of Learning History*

Course Description

Have you ever wondered how your ancestors lived in 1930s Wales? Or how World War One allowed a dictatorship to start in Germany? A knowledge of the past, and how it shapes our present and future, is an essential skill to have in the 21st century. By doing History GCSE, you will be able to see how human society has developed and how turning points have influenced the decisions of great minds throughout the periods studied. Ranging from the use of corporal punishment in the 16th century, to how Hitler rose to power and dismantled the Weimar Republic, History at ACS takes you on a journey that you will never forget.

Assessment

Unit 1: Depression, War and Recovery, 1930-1951 – Written Examination – 1.5 Hours - **25%**

Unit 2: Germany in Transition, 1919-1939 – Written Examination – 1 Hour - **25%**

Unit 3: Changes in Crime and Punishment, c.1500 to the present day – Written Examination - 1 hour and 15 minutes - **30%**

Unit 4: Victorian London & the Jack the Ripper Murders - Non-Examined Assessment - **20%**

Entry Requirements

Level 5+ in History. Level 5+ in English. Competent Literacy & Numeracy skills.

Further Education Opportunities

A-level History. History related degree at university.

Careers

History allows you pursue a number of careers. You could complete a PGCE and become a History teacher. You may want to become a politician, in which a knowledge of the past is essential. Perhaps, you may want to produce books, for which History is invaluable. History can open many doors. The only question is, which door is for you?

Enrichment & Support

As a Department, we run many extra-curricular activities to bring history alive, such as a visit to “Hitler on Trial”, as well as numerous lectures run by the University of South Wales and trips to countries such as Poland.

Why should I choose this subject?

History is a subject that can open many doors in the future. Not simply by providing you with a qualification, but by opening your eyes to the world around you and giving you the tools to understand how society has reached this point today.

Social Media
@HistoryDeptACS





Level 1/2 Horticulture ●

- ☐ CORE COMPULSORY
- ☐ GCSE OPTION
- ☒ VOCATIONAL OPTION

Specification: PEARSON

Grading: Pass / Merit / Distinction / Distinction*

Subject Contact: Miss R Ellis

Course Description

A course in Horticulture will provide you with the opportunity to study and experience the science behind growing plants, including fruits, vegetables and flowers. You will study the principles of plant and soil science, learn how to establish and maintain plants outdoors, and participate in regular visits to the school allotment.

Assessment

This course is assessed 100% through coursework. You will study four units which will include plant and soil science, establishing and maintaining plants outdoors and environmental/land based businesses. After you have completed each unit, you will be provided with feedback from your teacher. At the end of the course, you will achieve either a Pass, Merit or Distinction.

Entry Requirements

A strong interest in Horticulture and a good ability to work independently.

Further Education Opportunities

This course provides a foundation for you to progress further in the Horticultural industries. It would prepare you to study for a level 3 Technical qualification in Horticulture, an apprenticeship, or direct entry to employment.

Careers

This course will prepare you for a variety of occupations within the industry, such as a landscape supervisor, gardener, horticultural customer advisor, sports/grounds care technician and horticultural consultant.

Enrichment & Support

After-school club available on a weekly basis.

Why should I choose this subject?

This vocational qualification is the ideal course if you are interested in a career working within the Horticultural industry. The structure of the qualification enables you to build your knowledge through studying both inside the classroom, and outdoors on the allotment. The course will give you the opportunity to develop a range of skills and techniques, personal skills and attributes that are essential for successful performance in working life.

Social Media
@AberdareSchool





Level 1/2 Hospitality & Catering ●

- ☐ CORE COMPULSORY
- ☐ GCSE OPTION
- ☒ VOCATIONAL OPTION

Specification: WJEC

Grading: Level 2 Distinction* - Level 1 Pass

Subject Contact: Mrs R Marchant

Course Description

Level 1/2 Hospitality and Catering gives you an opportunity to prepare and cook a variety of dishes using different cooking techniques and equipment. You will explore the functional properties and chemical characteristics of food as well as the nutritional content of food and drinks. By the end of the course you will have an understanding of the relationship between diet, nutrition and health, the functional and nutritional properties, sensory qualities and microbiological food safety considerations when preparing, processing, storing, cooking and serving food and the Hospitality and Catering industry, the job roles and the different types of equipment use to support the industry.

Assessment

You will be required to complete one controlled assessment worth 60%. This involves researching, planning and making a two-course meal with accompaniments. This will be completed in 9 hours of class time.

There is one online written examination, worth 40%.

You will also be expected to participate in practical lessons weekly to develop your skills in preparation for these assessments. It is a requirement that pupils provide their own ingredients for these lessons.

Entry Requirements

Good prior achievement in Technology at KS3. Ability to work independently and be able to manage time effectively to meet deadlines.

Further Education Opportunities

You could go on to take BTEC Level 3 Hospitality. It will prepare students for further training or employment in the dynamic hospitality and catering industry. The most popular route is to pursue vocational courses at specialist catering colleges.

Careers

The food industry is a major growth industry in the UK and employs Food Technologists, Dieticians and Buyers. There are also wide ranging careers in the catering industry as well as in publishing and the media.

Enrichment & Support

After-school club available on a weekly basis. Opportunity to participate in open evenings and events.

Why should I choose this subject?

You should choose to study this course if you enjoy working with food and have a real interest in the food preparation and service aspect of the Hospitality and Catering industry. It is a suitable qualification for those who want a broad background in this area and for those who wish to progress to further education. It will offer valuable preparation for those entering the world of work. It is advantageous if you have enjoyed Food Technology at Key Stage Three.

Social Media

@ACS_DT





GCSE Information Communication Technology (ICT) ●

- ☐ CORE COMPULSORY
- ☒ GCSE OPTION
- ☐ VOCATIONAL OPTION

Specification: WJEC

Grading: A* - G

Subject Contact: Mr M Hills, *Leader of Learning Computing & Information Technology*

Course Description

Pupils will look at current and upcoming technologies, what ideas and resources are needed to create the latest technology and how to solve problems using ICT tools and techniques. Pupils will look at a variety of ICT tools such as; word processing, data handling, spreadsheet modelling and DTP. Pupils will look at the many uses of the Internet, such as the mechanics behind booking movie tickets and downloading music. Pupils will also explore the impact of ICT on society. They will examine real life situations that ICT influences, including: legal, social, economic and environmental scenarios. Most aspects of ICT are covered in this comprehensive course, there is something for everyone and it is a perfect foundation to any career.

Assessment

Unit 1 – Understanding ICT, written exam (1.5hrs) **20%**

Unit 2 – Solving Problems with ICT, controlled assessment (22.5hrs) **30%**

Unit 3 – ICT in Organisations, written exam (1.5hrs) **20%**

Unit 4 – Developing Multimedia ICT Solutions, controlled assessment (22.5hrs) **30%**

Entry Requirements

Level 5+ in ICT at KS3, some amplitude for working with computers, good literacy and numeracy skills.

Further Education Opportunities

BTEC Level 3 ICT, Applied ICT, A-Level ICT or another ICT / Computing related Level 3 qualification.

Careers

Systems Analyst, Software engineer, Web Developer, Network Manager, Business Analyst, Multimedia – any career that uses Computer Systems

Enrichment & Support

The department offers after-school tuition on a Thursday for all aspects of the course.

Why should I choose this subject?

WJEC GCSE ICT is an exciting level 2 course; it has elements that will appeal to all pupils. ICT is not just how you use technology but how it works and the effects it has - not just on our daily lives but in everything from commerce and communication, to politics and the music industry. It's the way of the future for all careers - you will need to know how ICT works and the impact it has on your chosen career.

Social Media
@Computing_ACS





BTEC Information Technology ●

- ☐ CORE COMPULSORY
- ☐ GCSE OPTION
- ☒ VOCATIONAL OPTION

Specification: PEARSON

Grading: Pass (GCSE B grade equivalent)

Subject Contact: Mr M Hills, *Leader of Learning Computing & Information Technology*

Course Description

The BTEC IT User Skills (QCF) is a practical, work-related course. Pupils learn by completing projects and assignments that are based on realistic workplace situations, activities and demands. Pupils develop a range of specialist ICT skills and knowledge. Pupils will build on their prior understanding of ICT skills and will now be utilising these skills in real world scenarios.

Assessment

This course is assessed through **100% Coursework**, studied in class. There is no exam element. To achieve a PASS – which is the equivalent of a B grade GCSE, you will complete five units of work using the Microsoft Office package. You will create assignments using MS Word, Excel, Publisher, Access and PowerPoint.

Entry Requirements

Level 5+ in ICT at KS3.

Further Education Opportunities

Study at Level 3 (BTEC ICT and A' Level ICT)



Careers

Systems Analyst, Software engineer, Web Developer, Network Manager, Business Analyst, Multimedia – any career that uses Computer Systems.

Enrichment & Support

The department offers after-school tuition on a Thursday for all aspects of the course.

Why study this subject?

This qualification is designed for anyone who is looking to gain knowledge and skills of core IT user skills and software applications to progress their learning in IT, or any subject where basic IT skills are required. This qualification covers core IT User skills and applications commonly used in many organisations around the world.

Completing this qualification will improve your basic IT skills and understanding of IT applications. It will teach you how to use the software efficiently and also teach you how to use a computer confidently and effectively, and encourages problem-solving, creativity and communication.

Social Media
@Computing_ACS





Level 1/2 Tourism ●

- ☐ CORE COMPULSORY
- ☐ GCSE OPTION
- ☒ VOCATIONAL OPTION

Specification: WJEC

Grading: Pass / Merit / Distinction / Distinction*

Subject Contact: Miss L Davies

Course Description

Tourism operates in many different contexts, from local bed and breakfasts, to national parks, from large multinational companies to small specialist transport operators and includes the private, public and voluntary sectors. In this GCSE, we will be looking the business of tourism, the customer experience, the UK and Europe as a tourist destination as well as sustainable tourism.

Assessment

Unit 1: Customer experience – In this unit you will consider all aspects of customer experience. This is relevant to the size of the organisation. This is assessed through an internal controlled assessment.

Unit 2: The business of tourism – In this unit you will learn about different types of ownership and organisations and gain an understanding of how retail businesses operate and respond to key issues. This is assessed through an external 75 minute exam

Unit 3: Developing UK tourist destinations – In this unit you will gain an understanding of features of destinations and the appeal of different destinations to different tourists. This is assessed through an internal controlled assessment.

Unit 4: European tourist destination – In this unit you will gain an understanding of attractions within European destinations and how attractions contribute to the appeal of different destinations. This is assessed through a 3 hour supervised assessment.

Unit 5: Events tourism – In this unit you will gain an understanding of the principles of event planning and operations and the cost and benefits to a destination of hosting events. This is assessed through an internal controlled assessment.

Unit 7 (option unit): Events tourism – In this unit you will understand the principles of suitability and how organisations can achieve this aim. This is assessed through an internal controlled assessment.

Entry Requirements

Level 4+ Geography at KS3.

Further Education Opportunities

Local colleges of Further Education offer Level 3 courses. This course could, for example, provide the basis for further studies in hotel management.

Careers

A good grounding for all aspects of the Leisure and Tourism industry.

Enrichment & Support

Regular field trips to local and national areas of interest. Revision sessions.

Why should I choose this subject?

The tourism industry is one the UK's largest employers, offering a variety of exciting and rewarding career possibilities. Our Tourism course gives you the opportunity to develop a sound knowledge and understanding of the industry, providing you with a first step onto the career ladder.

Social Media
@ACSGeography





GCSE Media & Film Studies ●

- ☐ CORE COMPULSORY
- ☒ GCSE OPTION
- ☐ VOCATIONAL OPTION

Specification: WJEC

Grading: A* - G

Subject Contact: Miss S Morgans, *Leader of Learning Media & Film Studies*

Course Description

This course allows learners to draw from their existing experience of the media and develops their ability to explore and create different media types. No previous knowledge of the subject is required but an interest in film, television, music etc. is desirable. You will need to have a basic knowledge of PC software such as Photo Draw and Publisher as these are used to complete the creative tasks.

Assessment

Media

Written exams – **60%** of qualification, 2 exams assessing knowledge of advertising, video games, music, television and film.

Coursework: Production assignment – **40%** of qualification, research and creating a media text.

Film

2 Written exams worth a combined **70%** of qualification – assessing knowledge of US and Global Films.

Coursework: Creating a Film extract - **30%** of qualification

Entry Requirements

No specific requirements, but a strong interest in film and media.

Further Education Opportunities

Students successfully completing GCSE Media Studies can progress to AS/A2 Film Studies, AS/A2 Media Studies and BTEC Creative Media Production Level 3 Diploma (equivalent to 2 'A' levels).

Careers

Marketing, Advertising, PR, Film, TV, Magazine Publishing, Sales, Gaming, Radio, Newspaper Publishing, Music Industry, Web Design, Social Media, Communications.

Enrichment & Support

Year 10/11 Coursework Club after school every Thursday. Revision booklets. Educational visits & trips.

Why should I choose this subject?

We are living in a world dominated by the media. This course allows you to study different types of media including film, television, advertising, computer games and pop music. At the end of the course, if successful, it is possible for students to be awarded two GCSE qualifications, one in Media Studies and one in Film Studies.

Social Media
@ACSEnglishDept





GCSE Music ●

- ☐ CORE COMPULSORY
- ☒ GCSE OPTION
- ☐ VOCATIONAL OPTION

Specification: WJEC

Grading: A* - G

Subject Contact: Mr P Juliff, *Leader of Learning Music*

Course Description

The new specification for WJEC, GCSE Music has a wide range of instrumental and vocal choices and now gives scope for a variety of contemporary performance styles alongside more traditional activities. The GCSE Music course is divided into 3 areas of performing, composing and appraising. The course components are summarized below.

Assessment

Unit 1: Performing Music – At the end of the course, pupils will perform one solo and one ensemble piece of music in a practical examination. Pupils can choose to play an instrument and/or sing. One piece must link to an area of study - **35% of Qualification**

Unit 2: Composing Music – Pupils will compose two contrasting compositions linking to an Area of Study – **35% of Qualification**

Unit 3: Appraising Music – This will be a listening examination – **30% of Qualification.**

Entry Requirements

Can play or sing to a Grade 3 standard and have some basic keyboard skills. You do not have to have taken a graded exam.

Further Education Opportunities

Students who successfully complete GCSE Music will have the opportunity to go onto study A Level Music, and A Level Music Technology.

Careers

Performer, Composer, Arranger, Studio Engineer, Producer, Teacher, Theatre Technician, Music Therapist.

Enrichment & Support

After school theory, composition and performance clinics. Concert Band, Year 10 Jazz Band.

Why should I choose this subject?

Whilst there is no restriction on students wanting to choose music it is preferable that they currently play an instrument or sing. It is expected that students will play an active part in school music activities, including solo and ensemble music making where appropriate. Opportunities include the Orchestra, Choir, Jazz Band, School Production and the possibility of forming other small ensembles as experience and skills allow. All music students are expected to attend recitals, concerts and workshops as directed.

Social Media
@ACSMusicDep





BTEC Music Technology ●

- ☐ CORE COMPULSORY
- ☐ GCSE OPTION
- ☒ VOCATIONAL OPTION

Specification: PEARSON

Grading: Pass / Merit / Distinction / Distinction*

Subject Contact: Mr P Juliff, *Leader of Learning Music*

Course Description

This qualification is designed to give learners the potential opportunity to enter employment within a wide range of junior job roles across the music industry. This new specification for BTEC Level 2 First Award in Music (Technology) has a wide range of unit choices. The course is intended to inspire learners to consider a career in the music industry, rather than to participate in music only recreationally.

Assessment

All pupils must study the **core** units below:

Unit 1: The music industry – **25% examination**

Unit 2: Managing a music product – **25% of qualification**

Pupils must select **two** of the **optional** coursework units below. Each unit is worth **25%**.

Unit 3: Live Sound

Unit 4: Music Composition

Unit 5: Music Performance

Unit 6: Music Recording

Unit 7: Music Sequencing

Entry Requirements

Level 5+ in Music at KS3.

Further Education Opportunities

Students who successfully complete BTEC Music Technology will have the opportunity to go onto study A Level Music, and A Level Music Technology.

Careers

Performer, Composer, Arranger, Studio Engineer, Producer, Teacher, Theatre Technician, Music Therapist.

Enrichment & Support

After school theory, composition and performance clinics. Concert Band, Year 10 Jazz Band.

Why should I choose this subject?

Whilst there is no restriction on students wanting to choose music it is preferable that they currently play an instrument or sing. It is expected that students will play an active part in school music activities, including solo and ensemble music making where appropriate. Opportunities include the Orchestra, Choir, Jazz Band, School Production and the possibility of forming other small ensembles as experience and skills allow.

Social Media
@ACSMusicDep





GCSE Physical Education ●

- ☐ CORE COMPULSORY
- ☒ GCSE OPTION
- ☐ VOCATIONAL OPTION

Specification: WJEC

Grading: A* - G

Subject Contact: Mr A Price, *Director of Sport & Wellbeing*

Course Description

Physical Education is offered to you at G.C.S.E. level. The course allows you to study both theoretical and practical elements of Physical Education in a carefully balanced programme. The course develops your knowledge, understanding and skills, building on the work you have done in Key Stage 3 PE.

Assessment

On the theoretical side you will study fitness, factors affecting participation, provision and performance in sporting and health activities, physical, psychological and tactical/technical factors that have an influence on performance and health. The theoretical component will contribute to **50%** of the overall final grade.

On the practical side you will be required to present three sports/activities for final assessment. These activities will be selected in Year 11 from a wide range of activities followed throughout the two year course. Final practical assessment will take place during the spring term of Year 11. This will be assessed internally, and be moderated by an external W.J.E.C examiner. The practical component will contribute to **50%** of the final grade.

The theory examination involves one exam paper:

Section A: examines fitness and factors affecting participation, provision and performance in sporting and health activities. These will be a series of short answer questions.

Section B: examines physical, psychological and tactical/ technical factors that have an influence on performance and health. This will be assessed through a combination of short answer and extended writing questions.

Entry Requirements

Good levels of fitness. Strong interest in PE.

Further Education Opportunities

Students who achieve a B grade or higher will have the ideal preparation for the A Level Physical Education Course, or the BTEC National Sport Level 3 qualification (Development, Coaching and Fitness).

Careers

Recreational Management, Leisure Industry, Fitness Industry, Teaching, Sports Science and more.

Enrichment & Support

GCSE practical after-school club. Revision sessions.

Social Media
@ACS_Sport





GCSE Photography ●

- ☐ CORE COMPULSORY
- ☒ GCSE OPTION
- ☐ VOCATIONAL OPTION

Specification: WJEC

Grading: A* - G

Subject Contact: Miss A Edwards

Course Description

GCSE Photography contains a mixture of internally and externally assessed units. Internal units are assessed using a candidate portfolio. Four coursework units, internally set and developed from given starting points. Sketchbooks are an integral part of the work and are essentially concerned with enquiry, experimentation and research. The external element of the course is completed under controlled conditions, where candidates must meet a series of assessment objectives. Ideally pupils need to own their own Cameras to ensure they can access the subject at home as well as in the classroom.

Assessment

Candidate portfolio – 4 units of work – **120 Marks**

Externally set task – **80 marks**

Entry Requirements

A basic understanding photography. Level 5+ Art KS3.



Further Education Opportunities

After gaining a GCSE in Photography, pupils may consider sitting an A-level course. This may be followed by an art college foundation course of 1 year and a 3 years BA Hons degree course in a range of Photography specialism areas.

Careers

Photojournalism, Commercial/Industrial/Scientific/Police/Sports/School Photographer, Fashion industry, Advertising/Marketing, Weddings and Freelance.

Enrichment & Support

After-school club. Trips run to museums and Art colleges.

Why should I choose this subject?

Studying photography will allow you to expand your skills in the subject whilst surrounded by peers with the same passion for imagery. You will gain confidence as a photographer and learn about different aspects of the medium. There are many opportunities within photography that could lead you down interesting career paths from fashion, advertising to sports. Apart from the career opportunities, you could choose to study GCSE Photography because you enjoy it. It can help you balance your subjects between those that are purely academic and those that are more creative. You may not be 'brilliant' at Photography but it is more important at this stage that you are interested in the subject and are prepared to work very hard at it. Ask your Art and Design teacher if they think you are capable of the course.

Social Media
@ACS_ART





GCSE Product Design ●

- ☐ CORE COMPULSORY
- ☒ GCSE OPTION
- ☐ VOCATIONAL OPTION

Specification: WJEC

Grading: A* - G

Subject Contact: Miss C Roberts

Course Description

The course offers you a creative and flexible approach to designing products. It focuses on choosing suitable materials to design and produce design solutions. You will learn traditional and modern processes that are used in industry. By the end of the course you will have detailed knowledge of materials and manufacturing processes.

Assessment

You will start a Design and Make Task worth 50% at the end of year 10 and continue it in year eleven. The task is based on a design portfolio and a practical outcome. The task will be marked by your teacher and an external moderator. A final two-hour examination, worth 50%, will also be sat in year eleven.

Entry Requirements

It helps to have a reasonable level in Mathematics, Science and of course Design and Technology. You must have the ability to think creatively and sketch free hand design ideas and produce designs using Computer Aided Design programmes.

Further Education Opportunities

You may wish to study A Level Design and Technology. This course also leads to vocational related courses or technical employment such as modern apprenticeships.

Careers

You could find work in the manufacturing, service and engineering industries. Jobs could include product design engineer, CAD designer, mechanical design engineer and visual designer. A design based qualification allows you to gain many skills that are transferable into many roles.

Enrichment & Support

After-school club available on a weekly basis.

Why should I choose this subject?

If you are interested in designing and making products in two and three dimensions, and learning different manufacturing techniques, this course will suit you. Through studying GCSE Design and Technology, learners will be prepared to participate confidently and successfully in an increasingly technological world; and be aware of, and learn from, wider influences on design and technology, including historical, social/cultural, environmental and economic factors. You must have the ability to think creatively.

Social Media
@DT_ACS





GCSE Religious Studies ●

- ☐ CORE COMPULSORY
- ☒ GCSE OPTION
- ☐ VOCATIONAL OPTION

Specification: WJEC

Grading: A* - G

Subject Contact: Mr M Roberts, *Leader of Learning RS*

Course Description

A recognised and **valuable qualification**, especially useful for working with people, for instance, nursing, police, teaching, banking, armed forces.

A **range of skills** with a wide variety of applications. Pupils will develop research skills. Interpret information, organise and present work appropriately, analyse issues, form and develop arguments, reach conclusions with relevant evidence. Most importantly, you will need to **discuss and debate important issues**.

A course that is personally challenging because it raises fundamental questions about human existence. **Religion is about people** – their behaviour, beliefs, hopes and fears.

A course that gives a much **broader outlook** on life.

Course Content

Pupils will study **moral and religious issues** that are relevant to modern life. They will also examine **Christian and Muslim teachings** about these issues.

Topics covered include sex, marriage, racism, sexism, God, life after death, violence, war, abortion, capital punishment and animal rights.

The course is divided into two sections:

- Religion and Life Issues
- Religion and Human Experience

Assessment

There are two examinations – one for each section of the course.

Entry Requirements

Level 5+ at KS3.

Further Education Opportunities

This will be a valuable addition to any college application; however some of you may choose to go on to study A Levels in any of the Social Sciences, for example Sociology, Psychology, Religious Studies, Law, Philosophy, Level 3 BTEC in Health and Social Care.

Careers

Teacher, Social Worker, Human Resources, Youth Worker, Lawyer. The understanding and skills developed are of value in many career areas.

Enrichment & Support

Revision support sessions.

Why should I choose this subject?

In many areas of work employers look for someone with an **enquiring mind**, understanding and appreciation of other people's point of view and an ability to reach a clear, informed decision: these are all skills which are developed in religious studies. Studying religion helps you to see the world from **many different viewpoints**.

Social Media

@ACS_RE





BTEC Leadership in Sport ●

- ☐ CORE COMPULSORY
- ☐ GCSE OPTION
- ☒ VOCATIONAL OPTION

Specification: Edexcel

Grading: Pass

Subject Contact: Mr A Price, *Director of Sport, Health & Wellbeing*

Course Description

This vocational course is assessed through several units studied throughout year 10 and 11.

Assessment

Unit 1: Planning and Leading Sports Activities

Unit 2: Injury in Sport

Unit 3: Planning and Running a Sports Event

Entry Requirements

No prior knowledge, understanding, skills or qualifications are required before learners register for this qualification. However, you must have a strong interest in a range of Sports and confident in coaching young pupils as you will be assessed on your leadership skills.

Further Education Opportunities

Students who achieve a B grade or higher will have the ideal preparation for the A Level Physical Education Course, or the BTEC National Sport Level 3 qualification (Development, Coaching and Fitness).

Careers

Recreational Management, Leisure Industry, Fitness Industry, Teaching, Sports Science and more.

Enrichment & Support

GCSE practical after-school club. Revision sessions.

Why should I choose this subject?

This course is ideal for any pupil wanting a career in the Sports Coaching field.

Social Media
@ACSSport





GCSE Textiles ●

- ☐ CORE COMPULSORY
- ☒ GCSE OPTION
- ☐ VOCATIONAL OPTION

Specification: WJEC

Grading: A* - G

Subject Contact: Miss N Dodd

Course Description

The course gives you an opportunity to explore a wide range of areas of textiles including printed and dyed materials, domestic textiles, constructed and applied textiles, fashion and costume. By the end of the course you will be able to demonstrate a range of textiles skills.

Assessment

You will have end of topic tests after every module in year ten. You will then complete a sustained design and make task, worth 50%, based on a contextual challenge set by WJEC, assessing your ability to; identify, investigate, analyse and outline design possibilities as well as designing and making prototypes, and evaluating their fitness for purpose. A final two-hour examination worth 50%, of short answer, structured and extended writing questions will assess your knowledge and understanding of fashion and textiles.

Entry Requirements

Good prior achievement in Technology at KS3. Ability to work independently and be able to manage time effectively to meet deadlines.

Further Education Opportunities

Students successfully completing GCSE Textiles can go on to study AS/A2 Textiles, or BTEC equivalent in Fashion/Textiles/Interior Design.

Careers

Textiles can lead to a number of design based career opportunities including fashion and interior design, buying, merchandising, window dressing, fashion marketing and more.

Enrichment & Support

After-school club available on a weekly basis.

Why should I choose this subject?

If you are interested in art, fashion or interior design this course would suit you. The subject could be suitable for you if you are interested in art and design based subjects. You should show enthusiasm and the ability to experiment with ideas and images.

Social Media
@DT_ACS





GCSE Triple Science (Biology, Chemistry, Physics) ●

- ☐ CORE COMPULSORY
- ☒ GCSE OPTION
- ☐ VOCATIONAL OPTION

Specification: WJEC

Grading: A* - G

Subject Contact: Mrs J Nicholls, *Leader of Learning Science*

Course Description

Pupils who take GCSE Triple Science will acquire 3 separate science grades at the end of year 11 – GCSE Biology, Chemistry and Physics. The grades awarded are consequently independent of each other. There are 2 tiers of papers: Foundation (C – G grades) and Higher (A* -D grades). Students will be entered for the tier that matches their performance and progress.

Assessment

External written exam papers and practical assessments.

Biology

Unit 1: External Exam – 80 Marks – Summer Year 10

Unit 2: External Exam – 80 Marks – Summer Year 11

Unit 3: Internal Practical Task – 30 Marks

Chemistry

Unit 1: External Exam – 80 Marks – Summer Year 10

Unit 2: External Exam – 80 Marks – Summer Year 11

Unit 3: Internal Practical Task – 30 Marks

Physics

Unit 1: External Exam – 80 Marks – Summer Year 10

Unit 2: External Exam – 80 Marks – Summer Year 11

Unit 3: Internal Practical Task – 30 Marks

Entry Requirements

Level 6+ Science at Key Stage 3.

Further Education Opportunities

This qualification will enable students to complete Level 3 science qualifications such as A-level Sciences or Level 3 BTEC's.

Careers

Biotechnology, Chemical Engineering, Pharmacology, Medical Sciences, Forensic Sciences, Engineering, Veterinary Sciences, Sports Sciences, and more.

Enrichment & Support

Science challenges and trips. Revision support sessions.

Why should I choose this subject?

Students should consider Triple Science if they are interested in studying the extra content over and above the Science Double Award required to achieve 3 GCSE's in Science. GCSE Triple Science is the in-depth study, investigation and explanation of the world we live in. This qualification provides a more detailed exploration of the science that is around us, stretching and challenging the most able.

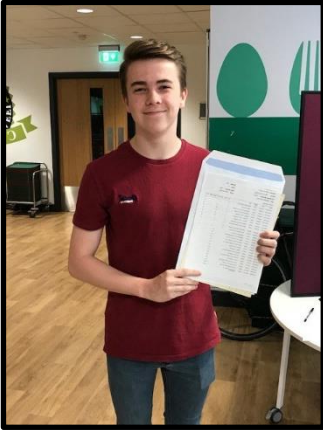
Social Media
@ACS_Science



Your Notes

This image shows a single sheet of white paper with horizontal ruling lines. The lines are evenly spaced and run across the width of the page. There are no margins, text, or other markings on the paper.

“Today is not just another day. It’s a new opportunity. Another chance. A new beginning. Embrace it. Choose your future wisely.”



For more information, please get in contact:

Aberdare Community School | Ynys Road | The Ynys | Aberdare | CF44 7RP

Telephone: 01685 888500 | Email: school@aberdare-school.co.uk

www.aberdare-school.co.uk



strive | believe | achieve ● ymdrechu | credu | cyflawni