



LOCAL GOVERNMENT WATER ROUNDTABLE



Association of
Minnesota Counties



MASWCD

Minnesota Association of Soil and Water Conservation Districts



Watershed Based Implementation Funding

Clean Water Council Presentation

August 15, 2022

Evolution of 1W1P: A MINDSET CHANGE

2010 Summit

- 380 local water management officials at a “Water Management Summit”

2011 Legislation

- Comprehensive Local Water Management on a watershed basis instead of a county boundary.

2013 White Paper

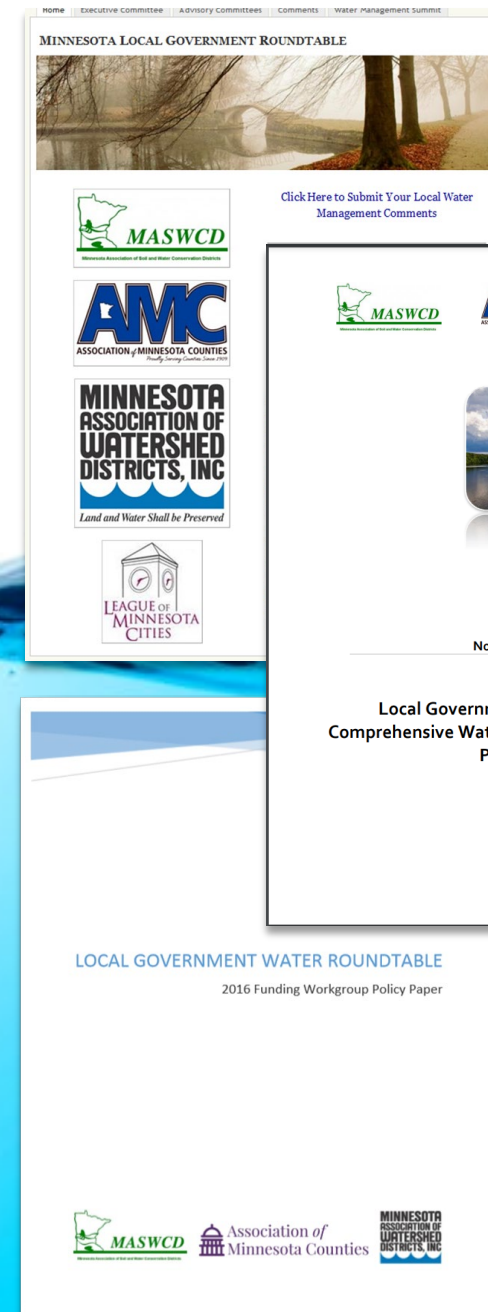
- Long-term predictable state funding
- Leveraging additional resources
- Oversight and Accountability

2015 Codification

- Commitment to *One Watershed One Plan* by codifying in state statute

2019 Coordinated Watershed Management

- Improvements to the Clean Water Legacy Act and local water management programs.
- Increase the pace of progress, assure accountability, provide flexibility, and support local action.





A New, Better Approach:

FOLLOW THE WATER



- ✓ Historic change in our approach to water planning and water quality improvements.
- ✓ Has support of state and local partners and has been made a centerpiece of this council's strategic plan.

Why:

- Accelerated science-based, comprehensive management of water resources on a watershed basis.
- Plans focused on implementation that are prioritized, targeted, and measurable.
- Input and engagement agency experts & stakeholder groups:
 - Incorporating WRAPS into management plans.
- Shared services and expanded local government partnerships:
 - Less planning, more coordination and implementation
 - Consolidation of the number of water plans (over 200 to less than 100)

How:

- Continued support for Watershed Based Implementation Funding:
 - With each cycle more plans come on board.
 - Funds are stretched across all approved plans.
 - Must be meaningful to have an impact.
 - Funding leverages other dollars.



The Minnesota Water Management Framework



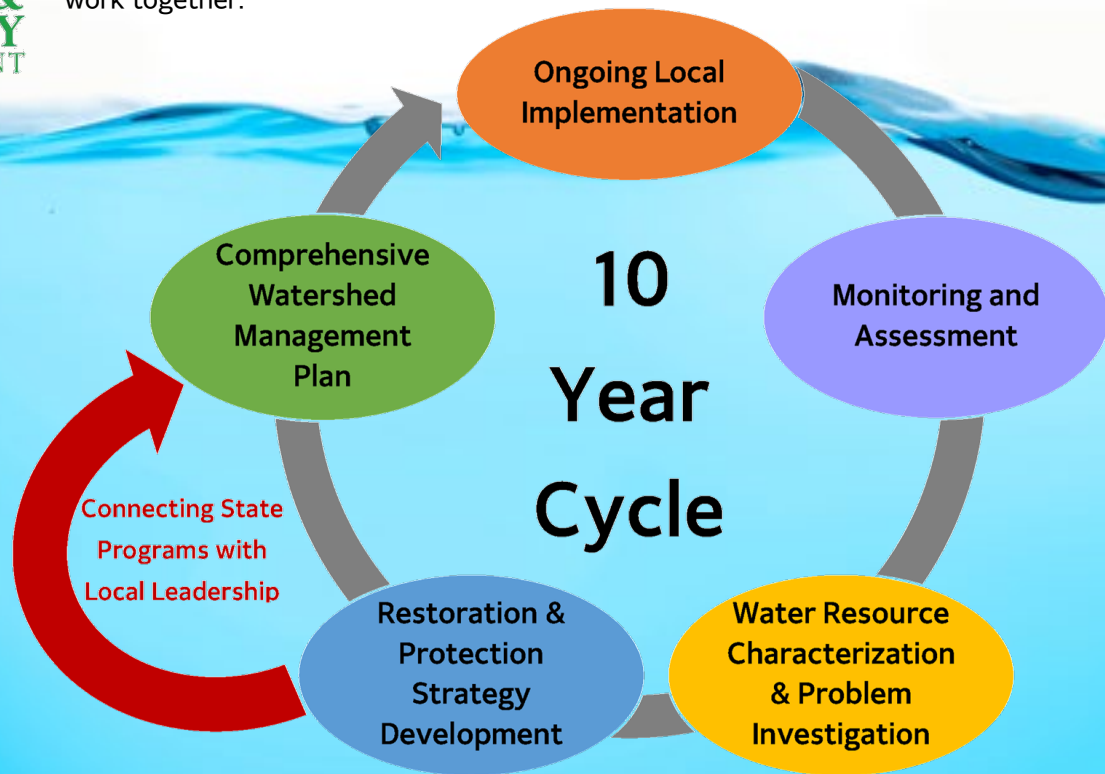
A high-level, multi-agency, collaborative perspective on managing Minnesota's water resources.



The passage of the Clean Water, Land, and Legacy Amendment is a **game-changer** for water resource management in Minnesota. Increased funding and public expectations have driven the need for **more and better coordination** among the state's main water management agencies.

The **MN Water Quality Framework** and the companion **MN Groundwater Management Framework** were developed by the agencies to enhance collaboration and clarify roles in an integrated water governance structure, so that it's **clear to everyone who is responsible** at each stage in the process, making it **easier and more efficient** for state and local partners to work together.

The red arrow illustrates the important connection between state water programs and local water management. **Local partners are involved - and often lead - in each stage in this framework.**



Goals: cleaner water via comprehensive watershed management; ensure that groundwater is protected and managed sustainably.

Building on a classic “plan - do - check” adaptive management approach, the framework uses 5 “boxes” to outline the steps Minnesota’s agencies are taking toward our goals of clean and sustainable water. The agencies aim to streamline water management by systematically and predictably delivering data, research, and analysis and empowering local action.

Ongoing Local Implementation is at the heart of the state’s overall strategy for clean water. Actions must be prioritized, targeted, and measurable in order to ensure limited resources are spent where they are needed most. The rest of the cycle supports effective implementation.

Monitoring and Assessment determines the condition of the state’s ground and surface waters and informs future implementation actions. The state’s “watershed approach” systematically assesses the condition of lakes and streams on a 10-year cycle. Groundwater monitoring and assessment is more varied in space and time.

Water Resource Characterization and Problem Investigation delves into the science to analyze and synthesize data so that key interactions, stressors, and threats are understood. In this step, watershed and groundwater models and maps are developed to help inform strategies.

Watershed Restoration and Protection Strategies (WRAPS) and Groundwater Restoration and Protection Strategies (GRAPS) include the development of strategies and high-level plans, “packaged” at the 8-digit HUC scale (81 major watersheds in Minnesota). These strategies identify priorities in each major watershed and inform local planning.

The **Comprehensive Watershed Management Plan** is where information comes together in a local commitment for prioritized, targeted, and measurable action. Local priorities and knowledge are used to refine the broad-scale WRAPS and other assessments into locally based strategies for clean and sustainable water.



Ongoing Implementation	Monitoring & Assessment	Watershed Characterization & Problem Investigation	Restoration & Protection Strategy Development	Comprehensive Watershed Management Plan
Funding and technical assistance for locally implemented watershed restoration and protection projects	Monitor progress of local implementation goals	Conservation targeting tools (e.g., Environmental Benefits Index) BMP guidance (e.g., drainage water management)	Participate on interagency watershed teams developing WRAPS (with all agencies)	Comprehensive Watershed Management Planning (One Watershed, One Plan) Local water and watershed plans
Appropriations and Public Waters Permitting Shoreland and floodplain management Technical assistance for projects	Stream flow Fish and plants (lakes) Mercury in fish tissue Aquifer levels (with Met Council)	Stream hydrology and geomorphology (support MPCA) Small scale watershed modeling and groundwater level modeling County Geologic Atlas	Advise on conservation actions based on holistic view of watershed health (hydrology, geomorphology, connectivity, biology, water quality)	Input on local conservation actions informed by statewide plans for prairies, forests, etc. Water supply planning and groundwater management areas (with Met Council)
Funding for source water protection, contaminants of emerging concern Well sealing cost share	Source water and finished drinking water Bacteria monitoring on Lake Superior beaches	Guidance for contaminants of emerging concern Data analysis and modeling to support WHPA delineation and vulnerability assessments for public water supplies	Source water protection planning (identification of problems, issues, and opportunities) Well construction management	Guidance for infiltration in DWSMAs Source water protection planning (local measures and strategies)
Loans and grants for water infrastructure projects based on priorities set by MDH and PCA				
NPDES permit programs, SSTS compliance Grants for Clean Water Partnership, Great Lakes Restoration, stormwater and wastewater treatment (PFA)	Water chemistry (surface and groundwater) Fish and macroinvertebrates (streams) Surface water assessment grants	Stressor Identification for biological impairments Watershed Modeling (8-HUC) TMDLs Civic engagement	Stakeholder agreement on broad watershed restoration and protection strategies (WRAPS) WRAPS report - includes implementation table TMDLs to EPA	Provide WRAPS for incorporation into local plans Input on management strategies informed by statewide nutrient plan
Ag BMP loans MN Agricultural Water Quality Certification Program Implement Pesticide and Nitrogen Fertilizer Management Plans	Pesticides in surface and groundwater Nitrate in groundwater	Research/evaluation on ag sources, practices and solutions Technical assistance on ag sources and practices, BMP demonstration/evaluation sites Stressor ID for pesticides	Ag practices and management options, nitrogen fertilizer and pesticide use Participate on interagency teams developing WRAPS Vegetative cover	Input on management strategies informed by pesticide and nitrogen fertilizer management plans
Technical assistance and demonstration projects	Lake, stream, river monitoring: flow, chemistry, biology Effluent monitoring (WWTPs) Impervious surface and land cover assessments	Modeling and trend assessments (surface water) Pollutant load calculations Groundwater mapping and characterization	Participate in WRAPS and local water planning teams Master water supply plan Groundwater management areas (with DNR)	Participate in review of local water and watershed plans (metro area); local water supply plans; and comprehensive land use plans (metro area)



The Minnesota Water Management Framework



A high-level, multi-agency, collaborative perspective on managing Minnesota's water resources.





The Minnesota Water Management Framework



A high-level, multi-agency, collaborative perspective on managing Minnesota's water resources.





The Minnesota Water Management Framework



A high-level, multi-agency, collaborative perspective on managing Minnesota's water resources.





The Minnesota Water Management Framework



A high-level, multi-agency, collaborative perspective on managing Minnesota's water resources.





The Minnesota Water Management Framework



A high-level, multi-agency, collaborative perspective on managing Minnesota's water resources.

**Ongoing Local Implementation of
Programs and Projects to Achieve
Fishable, Swimmable, Drinkable**

End Goal

Local Water
Management
Plan Updates

State
Monitoring and
Assessment

HSPF
updates

WRAPS
updates

Chisago Lakes Delisted

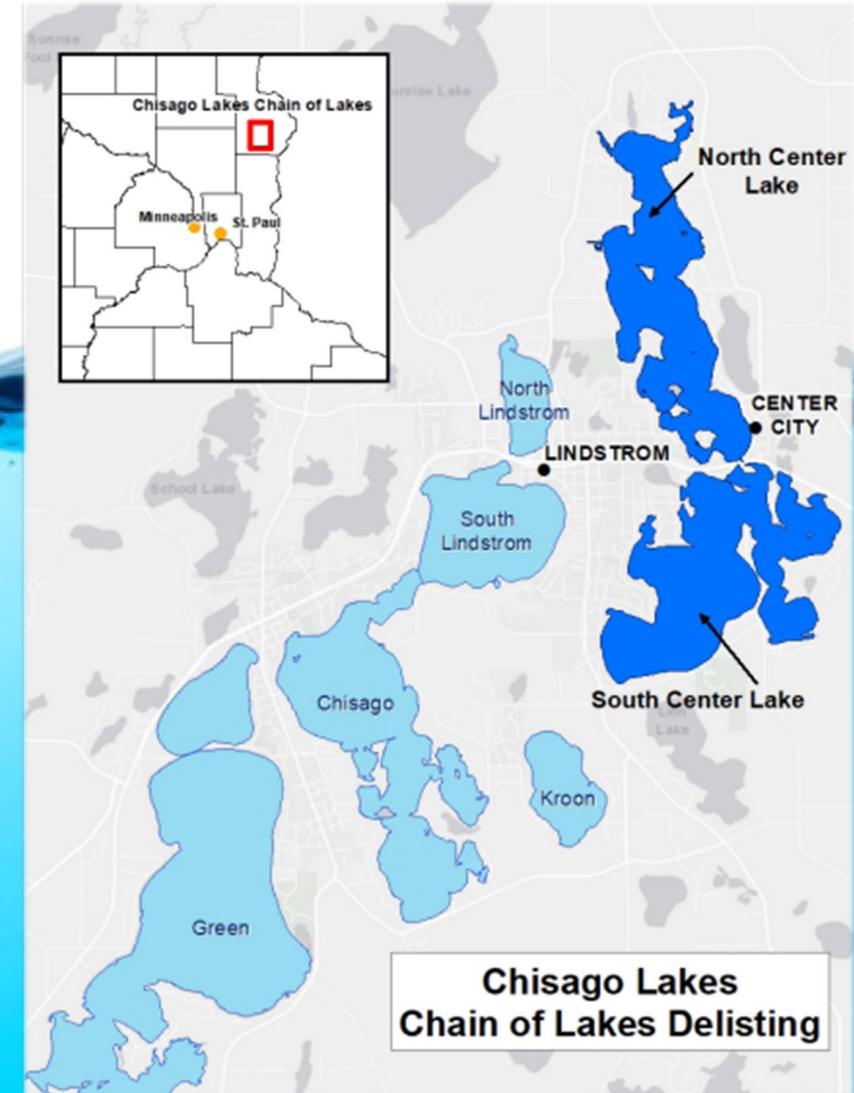


“I don’t know if we would have pursued it without the funding. It’s a great service if you can get this done without bankrupting the farmers at the same time.”

*- Pat Eichten,
landowner*

LEVERAGED FUNDING

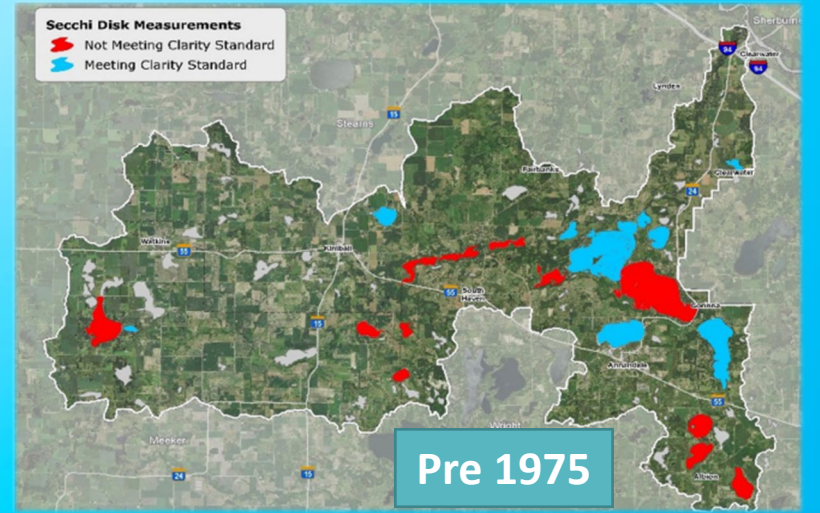
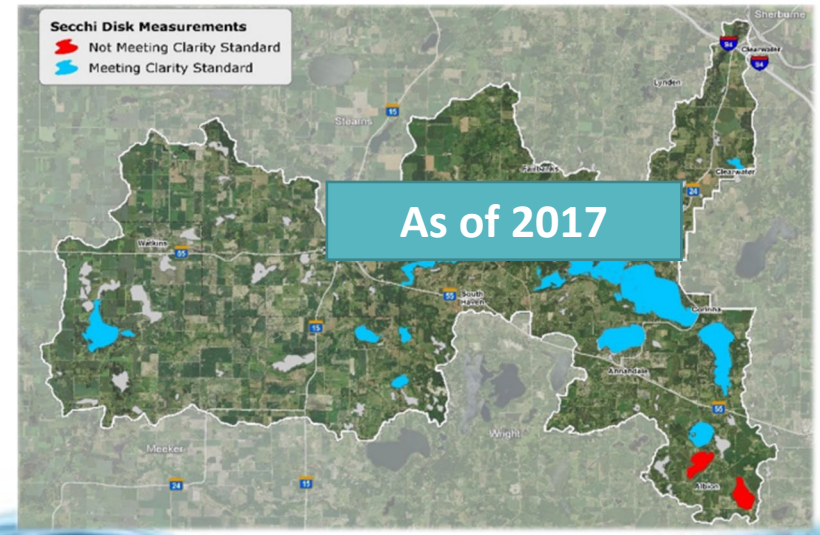
NRCS - MRBI - \$425,000
St. Croix River Association - \$50,000
Chisago Lakes, Lake Improvement District - \$40,000/annually



Proposed Delistings

Delisting Lake Augusta and Union Lake

PROJECT PARTNERS:
Cooperating Landowners
City of Kimball
City of Watkins
BWSR
MCPA,
U.S. EPA
Clearwater River Watershed
District
Meeker SWCD
Stearns County SWCD
Wright SWCD.
Central Minnesota Initiative Fund
Agricultural Utilization Research
Institute



PROJECTS: Serpent Lake Protection



2022 April Snapshots

Serpent Lake is twice as clear as it was 10 years ago.



“ We didn’t have a budget to take on ... a project like this ourselves. The grant opportunity was extremely helpful. We’d have never been able to do it, plus we don’t have the expertise on our staff to take on a project like that. ”

— Michael Aulie, Deerwood mayor



💧💧💧 Drinking Water Projects 💧💧💧

Pipestone SWCD targets nitrates



In ongoing effort to reduce levels within drinking water supply management areas, farmers are planting cover crops and perennial vegetation such as alfalfa



Drinking Water Protection

GRANT IN PROJECTS AND PRACTICES PROGRAM

m MINNESOTA

OVERVIEW

- DRINKING WATER FOCUS
- SEPTEMBER DEADLINE
- APPLY AT <https://bwsr.state.mn.us/apply>

ABOUT THE GRANT

The Minnesota State Legislature has approved a sub-grant program within the Projects and Practices program to support drinking water protection. This grant is focused on land treatment projects that will protect or improve the quality of drinking water sources. The grant is part of the Board of Water & Soil Resources (BWSR) Clean Water Fund Competitive Grant program, made possible by Clean Water Fund.

WHAT AREAS WILL BE TARGETED?

This is an opportunity to target critical drinking water areas, including but not limited to:

- Drinking Water Supply Management Areas (DWSMAs)
- Surface water drinking water sources
- Minnesota Department of Agriculture (MDA) Township Testing Areas

Drinking water resources identified in local water plans are also eligible if they can be protected by land conservation treatment practices.

WHAT ARE FUNDING PRIORITIES?

In the grant review process, priority will be given to activities that are:

1. Near the public water supply well or surface water intake; and
2. Appropriate for the geologic vulnerability and surrounding land use.

Eligible projects:

- Improve water quality
- Focus on drinking water sources
- Implement land treatment projects

CLEAN WATER LAND & SOIL LEGACY

Lincoln County Collaboration

“If I didn’t have the cost share funds, it wouldn’t have been affordable. We wouldn’t have done it.”

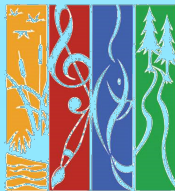
-Randy Janiszkeski, farmer



United States
Department of
Agriculture



Natural Resources
Conservation
Service website:
www.nrcs.usda.gov



CLEAN
WATER
LAND &
LEGACY
AMENDMENT



United States
Environmental Protection
Agency

Clean Water Fund Transition to Watershed Based Implementation Funding

Clean Water Fund Total \$

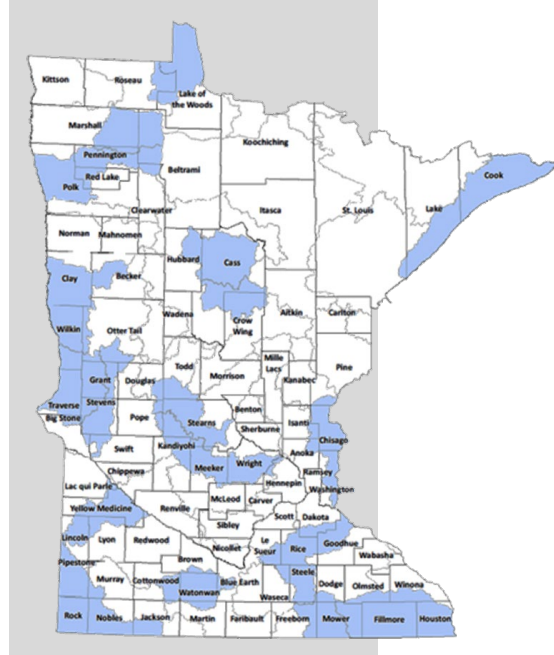


FY 18 - 19

\$8,700,000

WBIF

Clean Water Fund Total \$

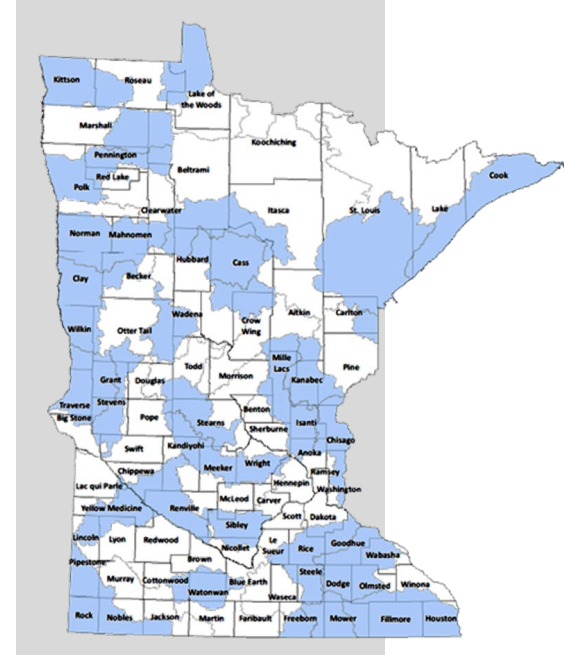


FY 20 - 21

\$25,970,000

WBIF

Clean Water Fund Total \$



FY 22 - 23

\$39,800,000

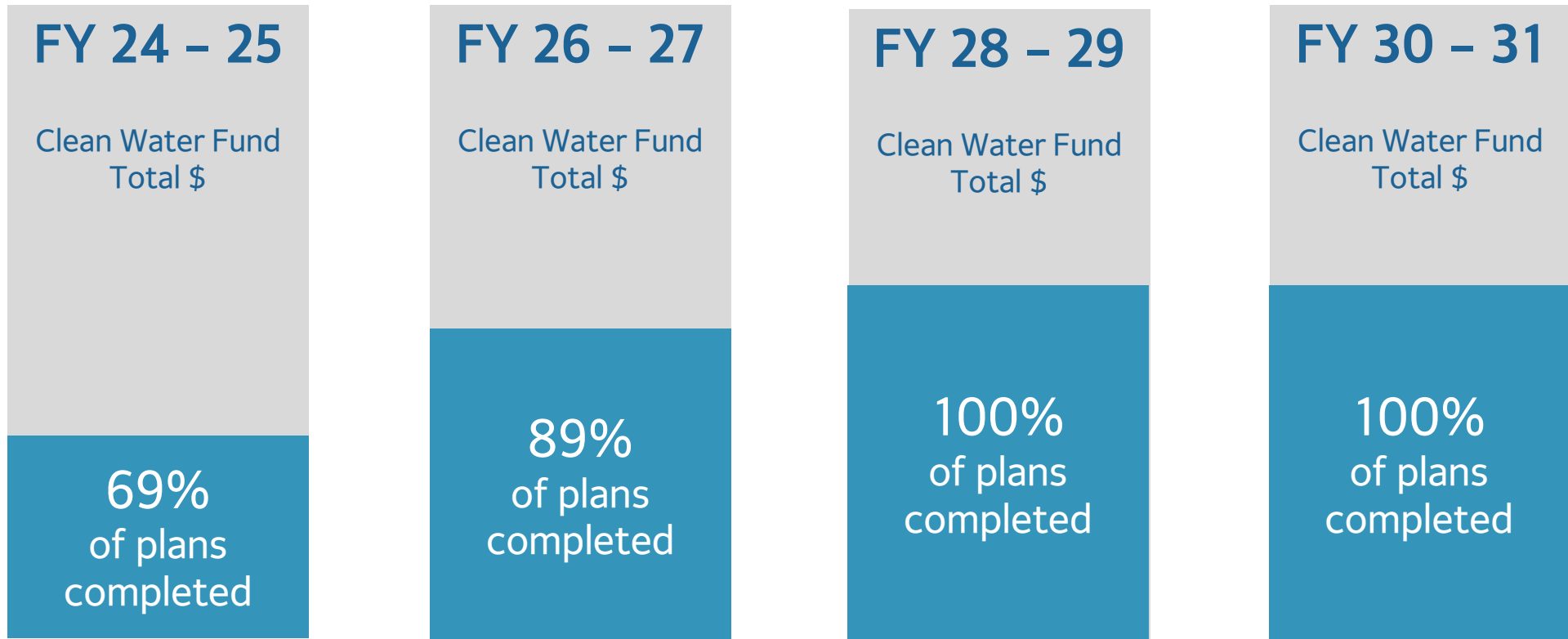
WBIF

Estimated WBIF Amounts for FY24-31

The Local Government Water Roundtable Priority

Sustain the necessary trajectory for Watershed Based Implementation Funding

(\$79 million Watershed Based Funding in FY2024-2025)





Commitment to Implementation



Turning Plans into Actions

- Historic Change - Follow the Water
- Partnerships and Collaboration
- Locally led and locally implemented
- Leverages technical expertise and funding



Water Quality Improvement

Landowners

Delivering Outcomes

Soil and Water Conservation Districts

Clean Water Council

Targeted Efforts

Counties

Address Impairments

Minnesota State Agencies

Water Quality Protection

Cities and Towns

Every Corner of the State

Watershed Districts

Minnesota Legislature

Federal Agencies

Private Sector Partners



WBIF Questions & Discussion



LeAnn Buck
Executive Director
Minnesota Association of Soil and Water Conservation Districts

Emily Javens
Executive Director
Minnesota Association Watershed Districts

Brian Martinson
Policy Analyst
Association of Minnesota Counties