

Wednesday, May 30, 2018

Colorado AB

INVITED SYMPOSIA

9:45 am-11:35 am

Stemming the Deterioration of Wetlands: Good Practice Policy and Management Approaches I

Hosted by the Ramsar Section

Chairs: Gillian Davies, BSC Group, Inc.; Matthew Simpson, WWT Consulting; Nick Davidson, Nick Davidson Environmental

9:55-10:15 am 1102 - **Wetland Science Informing Policy and Practice: Where in the World Does Wetland Wise Use Need to Improve Most?**
Nick Davidson, Nick Davidson Environmental

10:15-10:35 am 1338 - **Update on the Trends of Mediterranean Wetlands: The Mediterranean Wetlands Outlook 2**
Patrick Grillas, Tour du Valat

10:35-10:55 am 1150 - **What's Driving Continuing Wetland Loss and Degradation?**
Anne van Dam, IHE-Delft Institute for Water Education

10:55-11:15 am 1051 - **Wetland Climate Adaptation Policy: Gaps, Needs and Adequacy of Management Approaches**
Max Finlayson, Institute for Land, Water & Society

11:15-11:35 am 1657 - **Community Engagement and Wetland Management to Counter Threats of Wetland Degradation**
Matthew Simpson, WWT Consulting

1:00 pm-2:50 pm

Stemming the Deterioration of Wetlands: Good Practice Policy and Management Approaches II

Hosted by the Ramsar Section

Chairs: Gillian Davies, BSC Group, Inc.; Matthew Simpson, WWT Consulting; Nick Davidson, Nick Davidson Consulting

1:10-1:30 pm 1056 - **Successful Wetland Restoration Must Balance Benefits to Human Societies and Ecosystems**
Luca Marazzi, Florida International University

1:30-1:50 pm 1238 - **Ramsar Convention Responses to Global Wetland Deterioration: How Much, and How Successful?**
Royal Gardner, Stetson University College of Law

1:50-2:10 pm 1239 - **The Changing US Legal and Policy Framework for Wetland Conservation: Will It Lead to More Degradation?**
Royal Gardner, Stetson University College of Law

2:10-2:30 pm 1178 - **Assessing and Planning for Managing Wetland Ecosystem Services and Local Livelihoods Through Wetland Manager Empowerment - the Myanmar Approach**
Rob McInnes, RM Wetlands & Environment Ltd.

2:30-2:50 pm Panel Discussion

3:10 pm-4:40 pm

Measuring Wetland Greenhouse Gas Fluxes: Novel Methods, Exchanging Ideas, and Informing Management

Chair: Sheel Bansal, US Geological Survey

3:20-3:40 pm 1153 - **Diurnal Patterns of Methane Flux from a Seasonal Wetland: Mechanisms and Methodology**
Sheel Bansal, US Geological Survey

3:40-4:00 pm 1379 - **Geochemical Controls on Diffusive and Ebullitive Methane and Carbon Dioxide Emissions from Prairie Pothole Wetlands**
Christopher Mills, US Geological Survey

4:00-4:20 pm 1459 - **Diurnal Cycles of Dissolved Methane, Oxygen and Carbon Dioxide Fluxes in a Prairie Pothole Wetland**
Christopher Martens, University of North Carolina at Chapel Hill

4:20-4:40 pm 1260 - **Blue Carbon - Greenhouse Gas Fluxes from Coastal California Restoration Projects**
Haley Miller, Chapman University



Society of Wetland Scientists Annual Meeting #SWS2018
Wetland Science: Integrating Research, Practice, and Policy - An Exchange of Expertise

Wednesday, May 30, 2018

Colorado CD

CONTRIBUTED SESSION

9:55 am-11:35 am

Wetlands and Climate Change

- 9:55-10:15 am 1384 - **The Potential Long-Term Impacts of Climate Change on the Hydrologic Regimes of Wetlands in North Carolina**
Jack Kurki-Fox, NC State University
- 10:15-10:35 am 1606 - **Climate Change Projections of Semi-Arid Wetlands**
Meghan Halabisky, University of Washington
- 10:35-10:55 am 1096 - **Spatiotemporal Change of Fractional Vegetation Coverage and its Relationship with Climate Change in Freshwater Marshes, Northeast China**
Xiangjin Shen, Northeast Institute of Geography and Agroecology
- 10:55-11:15 am 1371 - **A Biogeochemical Record of Climate Change in Northern Ontario Riverine Marshes**
Susan Glasauer, University of Guelph
- 11:15-11:35 am 1249 - **Climate Change Impact on the Ecology of Three Designated Tropical Coastal Wetlands in India: Challenges in Management and Policy Implementation**
Shadananan Nair, Krishnapillai, Centre for Earth Research and Environment Management **WITHDRAWN**

INVITED SYMPOSIA

1:00 pm-2:30 pm

From Mapping to Monitoring: Tracking Wetland Acres, Functions, Condition, and Significance in the Rocky Mountains I

Chair: *Joanna Lemly, Colorado Natural Heritage Program*

- 1:10-1:30 pm 1135 - **Assessing the Condition of Colorado's Wetlands to Improve Decision Making**
Joanna Lemly, Colorado Natural Heritage Program
- 1:30-1:50 pm 1333 - **Colorado's Watershed Planning Toolbox: Bridging the Gap Between Ecological Data and Applied Restoration and Water Resource Management**
Sarah Marshall, Colorado Natural Heritage Program
- 1:50-2:10 pm 1246 - **Landscape-Level Wetland Assessment: Montana's MT-NWI++**
Jennifer Chutz, Montana Natural Heritage Program
- 2:10-2:30 pm 1599 - **Using Wetland Characterization to Inform Land Management Decisions in Central Montana**
Stephen Carpenedo, MTDEQ

3:10 pm-5:00 pm

From Mapping to Monitoring: Tracking Wetland Acres, Functions, Condition, and Significance in the Rocky Mountains II

Chair: *Joanna Lemly, Colorado Natural Heritage Program*

- 3:20-3:40 pm 1507 - **Using Wetlands Mapping and Classification to Protect and Restore New Mexico Wetlands**
Karen Menetrey, New Mexico Environment Department
- 3:40-4:00 pm 1154 - **Developing Wetland Assessment Methods for Wyoming's Irrigated Basins: Addressing Condition, Biodiversity, and Habitat Value**
Lindsey Washkoviak, Wyoming Natural Diversity Database
- 4:00-4:20 pm 1276 - **Assessing Wetlands in Utah: Focus on Amphibian Habitat**
Diane Menuz, Utah Geological Survey
- 4:20-4:40 pm 1591 - **Assessing Intensively Managed Wetlands: Linking Condition, Habitat Goals, and Wildlife Functions**
Becka Downard, Utah Division of Water Quality
- 4:40-5:00 pm 1549 - **A Comparison of Stream and Wetland Functional Assessments and Their Applicability to Restoration Projects in Colorado**
Moneka Worah, ERO Resources Corporation



Wednesday, May 30, 2018

Colorado G

INVITED SYMPOSIA

9:45 am-11:35 am

Regional Recovery of Wetlands in the Northern Tampa Bay Area: Scientific and Regulatory Perspectives I

Chairs: Christopher Shea, Tampa Bay Water; Dan Schmutz, Greenman-Pedersen, Inc.

- 9:55-10:15 am 1391 - **Tampa Bay Water's Recovery Assessment Plan**
Warren Hogg, Tampa Bay Water
- 10:15-10:35 am 1453 - **Trend Analysis of Recharging and Discharging Groundwater Conditions Below Wetlands in Northern Tampa Bay, Florida**
Lee Terrie, St Petersburg College
- 10:35-10:55 am 1200 - **Establishing Minimum Levels in Wetlands and Lakes - Lessons Learned**
Michael Hancock, Southwest Florida Water Management District
- 10:55-11:15 am 1218 - **Ground Cover Vegetation Responses to Reductions in Groundwater Extraction in Isolated Cypress Domes North of Tampa Bay, Florida**
Paul Thurman, Northwest Florida Water Management District
- 11:15-11:35 am 1517 - **Functional Response of Cypress Dome Wetlands to Hydrologic Recovery**
Christopher Anderson, Auburn University

1:00 pm-2:50 pm

Regional Recovery of Wetlands in the Northern Tampa Bay Area: Scientific and Regulatory Perspectives II

Chairs: Christopher Shea, Tampa Bay Water; Dan Schmutz, Greenman-Pedersen, Inc.

- 1:10-1:30 pm 1195 - **Development and Application of Wetland Recovery Metrics**
Christopher Shea, Tampa Bay Water
- 1:30-1:50 pm 1464 - **Machine-Learning Support for Determination of Wetland Hydrological and Ecological Recovery at Unmonitored Sites**
Dan Schmutz, Greenman-Pedersen, Inc.
- 1:50-2:10 pm 1301 - **Wetland Recovery in the Northern Tampa Bay Area Following Groundwater Cutbacks: Results from the 2016 Wetland Health Assessment Study.**
Ronnie Van Fleet, VHB
- 2:10-2:30 pm 1035 - **Restoring Floodplain Function Within a Wellfield for Wetland Restoration and Flood Mitigation**
Cynthia Grizzle, HW Lochner
- 2:30-2:50 pm 1367 - **Wetland Restoration in South Florida Urban Setting: A 30 Year Review**
Cheryl Carpenter, C&N Environmental Consultants, Inc.

CONTRIBUTED SESSION

3:20 pm-4:40 pm

GIS & Remote Sensing

- 3:20-3:40 pm 1440 - **Remote Sensing Indicators for the Landscape-Scale Assessment of Vegetation Dynamics in Restored Wetlands**
Sophie Taddeo, University of California at Berkeley
- 3:40-4:00 pm 1658 - **Use of Unmanned Aerial Vehicles in Wetland Restoration Monitoring**
John Bateman, The State University of New York - Brockport
- 4:00-4:20 pm 1393 - **Mapping Coastal Marshes Biomass with Combined Ground, Airborne, and Spaceborne Remote Sensing Data**
Yu Mo, University of Maryland
- 4:20-4:40 pm 1438 - **Using Drones to Assess Feral Swine Damage in Wetlands Across a Florida Rangeland**
Wesley Anderson, University of Florida



Wednesday, May 30, 2018

Colorado H

INVITED SYMPOSIA

9:45 am-11:35 am

Ecological Restoration of Cranberry Farms in Massachusetts - Practice, Research, and Policy I

Chairs: Alex Hackman, Massachusetts Department of Fish and Game; Glorianna Davenport, Living Observatory, Inc; Nick Wildman, Massachusetts Department of Fish and Game

- 9:55-10:15 am 1347 - **Ecological Restoration of Abandoned Cranberry Farms: An Opportunity to Reshape a Region**
Alex Hackman, Massachusetts Department of Fish and Game
- 10:15-10:35 am 1065 - **Long-Term Development and Soil-Based Ecosystem Functions of Restored Wetlands**
Kate Ballantine, Mount Holyoke College
- 10:35-10:55 am 1118 - **Rewilding the Soil: The Effect of Ecological Restoration on the Soil Microbiome of Coastal Wetlands**
Jason Andras, Mount Holyoke College
- 10:55-11:15 am 1299 - **Understanding Nitrogen and Phosphorus Balances of Active Cranberry Bogs Can Help to Prioritize Future Restoration at Farm to Watershed Scales**
Christopher Neill, Woods Hole Research Center
- 11:15-11:35 am 1358 - **Modeling How Wetland Restoration Impacts Nitrogen and Carbon Cycling in Former Cranberry Farms**
Stephen Balogh, US Environmental Protection Agency

1:00 pm-2:50 pm

Ecological Restoration of Cranberry Farms in Massachusetts - Practice, Research, and Policy II

Chairs: Alex Hackman, Massachusetts Department of Fish and Game; Glorianna Davenport, Living Observatory, Inc.; Nick Wildman, Massachusetts Department of Fish and Game

- 1:10-1:30 pm 1434 - **Applied Science and Design Strategies in Cranberry Bog Restoration**
Nicholas Nelson, Inter-Fluve, Inc.
- 1:30-1:50 pm 1124 - **Living Observatory: Building a Multi-Disciplinary Learning Collaborative to Document the Long-Term Story of Ecological Change Across Tidmarsh**
Glorianna Davenport, Living Observatory, Inc.
- 1:50-2:10 pm 1072 - **Waiting for Wet: Soil Moisture and Wetland Future for a Cranberry Bog**
Christine Hatch, University of Massachusetts - Amherst
- 2:10-2:30 pm 1349 - **Building and Deploying the Networked Sensory Landscape at Tidmarsh**
Brian Mayton, MIT Media Lab
- 2:30-2:50 pm 1215 - **Estimating Ecosystem Service Benefits from Cranberry Bog Restoration**
Nick Wildman, Massachusetts Division of Ecological Restoration

CONTRIBUTED SESSION

3:20 pm-5:00 pm

Wetland Regulations & Delineation

- 3:20-3:40 pm 1351 - **'There Are No Wetlands on our Project, Those Are Just High Elevation Meadows' A Case Study**
Jamie Wilson, Stanley Consultants
- 3:40-4:00 pm 1227 - **A Challenging Wetland Delineation in Red Alluvium of the Eastern Mountains: When to Use Rules and When to Apply Ecological Principles**
Janet Nunley, Environmental Resources Management
- 4:00-4:20 pm 1607 - **What the FAC Is Up with Aspen in the Pacific Northwest?**
Amy Yahnke, Washington Department of Ecology
- 4:20-4:40 pm 1343 - **Unintended Consequences of Dam Rehabilitation: Exploring the Conflicts between Wetlands and Water Storage**
Sarah Skigen-Caird, GEI Consultants, Inc.
- 4:40-5:00 pm 1535 - **Evaluating Hydrologic Performance Standards for Wetland Mitigation**
Jeremy Sueltenfuss, Colorado State University



Wednesday, May 30, 2018

Colorado I

CONTRIBUTED SESSIONS

9:55 am-11:35 am

Wetland Restoration/Creation/Mitigation I

- 9:55-10:15 am 1335 - **Tackling Operational Challenges of Constructed Wetlands**
Loretta Mokry, Alan Plummer Associates, Inc.
- 10:15-10:35 am 1060 - **Duration of Farming is an Indicator of Natural Restoration Potential of Sedge Meadows**
Guodong Wang, Chinese Academy of Sciences
- 10:35-10:55 am 1204 - **Understanding Elevation and Edaphic Controls on the Establishment of Wetland Vegetation in Cranberry Bogs Slated for Restoration in Massachusetts**
Michael Whittimore, Woods Hole Research Center
- 10:55-11:35 am 1441 - **Effects of Burial Depth and Water Depth on Seedling Emergence and Early Growth of *Scirpus planiculmis***
Bo Liu, Northeast Institute of Geography and Agroecology, Chinese Academy of Sciences

1:10 pm-2:30 pm

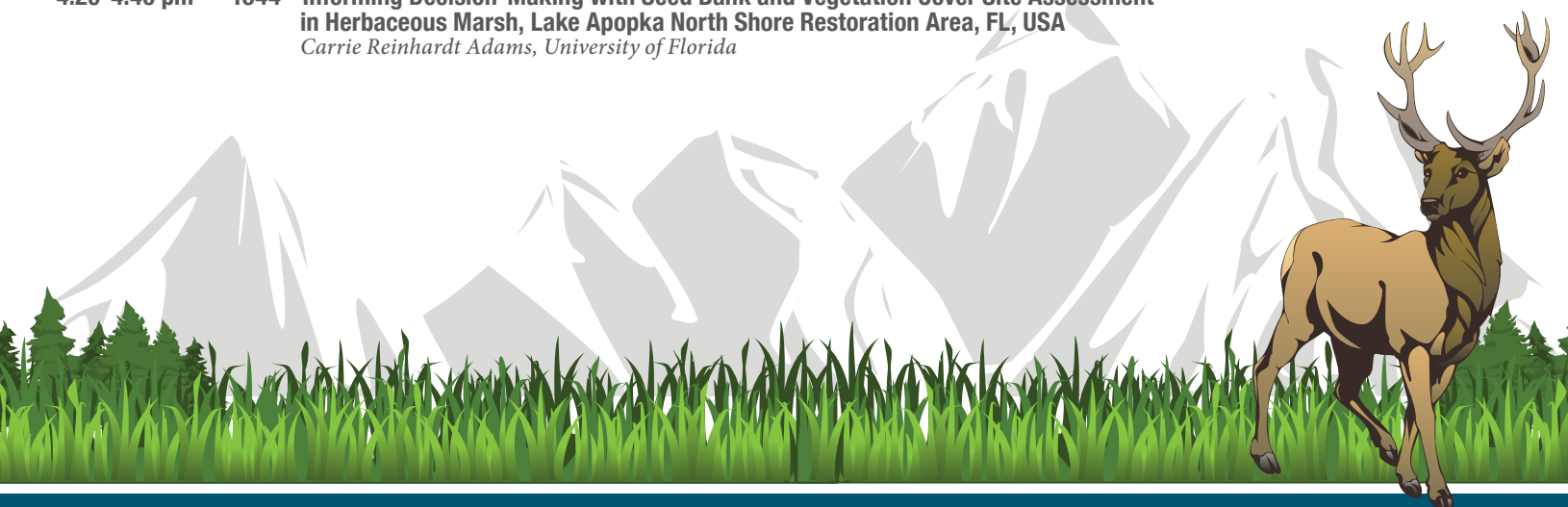
Wetland Restoration/Creation/Mitigation II

- 1:10-1:30 pm 1359 - **Wetland and Ecological Restoration on Renewable Energy Projects**
Mickey Marcus, SWCA Environmental Consultants
- 1:30-1:50 pm 1089 - **Getting to Scale: Wetland and Riparian Restoration in the Tualatin River Watershed, Oregon**
Tracey Dulin, Clean Water Services
- 1:50-2:10 pm 1565 - **Investigating Riverine Sediment Removal at a Large Restored Floodplain Wetland, La Grange Wetland Bank Site, Brown County, Illinois**
Keith Carr, Illinois State Geological Survey
- 2:10-2:30 pm 1134 - **Don't Wave the River Red Gums Goodbye. The Role of Environmental Flows in Restoring River Quality and Riparian Zones Along the Wimmera River**
Paul Julian, University of Florida

3:20 pm-4:40 pm

Wetland Restoration/Creation/Mitigation III

- 3:20-3:40 pm 1382 - **A Geonarrative and Web Mapping Applications to Prioritize Potential Coastal Wetland Restoration Sites in the Great Lakes**
Kurt Kowalski, US Geological Survey
- 3:40-4:00 pm 1322 - **The Impacts of Wetland Restoration on Fish Productivity in Nigeria**
Fatai Gbolahan Owodeinde, Lagos State University
- 4:00-4:20 pm 1386 - **Vegetation Response to Historic Ditching and Restoration at the Lake Superior Wetland Mitigation Bank in Northeast Minnesota**
Natalie White, SEH
- 4:20-4:40 pm 1644 - **Informing Decision-Making with Seed Bank and Vegetation Cover Site Assessment in Herbaceous Marsh, Lake Apopka North Shore Restoration Area, FL, USA**
Carrie Reinhardt Adams, University of Florida



Wednesday, May 30, 2018

Colorado J

CONTRIBUTED SESSIONS

9:55 am-11:35 am

Biogeochemistry of Wetlands I

- 9:55-10:15 am 1145 - **Nitrogen Enrichment Alters Carbon Fluxes in a New England Salt Marsh**
Emily Geoghegan, Villanova University
- 10:15-10:35 am 1330 - **The Effect of Open Marsh Water Management Practices on the Carbon Balance of Tidal Marshes in Barnegat Bay, New Jersey**
Elisabeth Powell, Academy of Natural Sciences of Drexel University
- 10:35-10:55 am 1273 - **Effects of Nutrient Enrichment on Carbon Dynamics in the Salt - Marsh Mangrove Ecotone**
Lorae Simpson, Whitney lab for Marine Bioscience
- 10:55-11:15 am 1634 - **Towards a Conceptual Framework for Understanding Tradeoffs in Biodiversity and Carbon Function in Coastal Wetlands**
Beth Lawrence, University of Connecticut
- 11:15-11:35 am 1340 - **Salt Marsh Vegetation Influence on Carbon-based Services and Microbial Communities**
Aidan Barry, University of Connecticut

1:10 pm-2:50 pm

Biogeochemistry of Wetlands II

- 1:10-1:30 pm 1389 - **Temporal-Spatial Distribution and Sources of Bulk Organic Matter and Aliphatic Hydrocarbons in the Shallow Sea Wetland of the Liaodong Bay, China**
Xigui Ding, Qingdao Institute of Marine Geology
- 1:30-1:50 pm 1151 - **Examining the Use of Integrated Constructed Wetlands for the Management of Mine-Influenced Wastewaters in the Pyrite Belt of the Iberian Peninsula**
Caolan Harrington, VESI Environmental Ltd.
- 1:50-2:10 pm 1395 - **Assessing the Contribution of Glomalin-Related Soil Protein to Soil Organic Carbon in Two Models of Coastal Wetland Restoration**
S. Alex McClellan, Louisiana State University
- 2:10-2:30 pm 1100 - **Treatment of a Small Stream Impacted by Agricultural Drainage in a Constructed Wetland**
Jan Vymazal, Czech University of Life Sciences Prague
- 2:30-2:50 pm 1470 - **Effects of Seasonality and Hurricane Events on Water Quality and DOM Cycling Along a Salinity Gradient in Florida**
Tracey Schafer, University of Florida

3:20 pm-5:00 pm

Biogeochemistry of Wetlands III

- 3:20-3:40 pm 1142 - **Effectiveness of Management Practices Used for Nutrient and Suspended Solid Mitigation in Agricultural Drainage Ditches**
Derek Faust, US Department of Agriculture
- 3:40-4:00 pm 1497 - **Has Marine Derived Nitrogen Returned to Riparian Areas Since Dam Removal on the Elwha River, WA, USA?**
Wendal Kane, Eastern Washington University
- 4:00-4:20 pm 1285 - **Increasing Carbon Storage in Response to Historical Sea Level Rise, Biscayne Bay Coastal Wetlands, Southeast Florida**
John Meeder, Florida International University
- 4:20-4:40 pm 1041 - **Soil and Porewater Response to Simulated Seawater Intrusion in Tidal Freshwater Marshes, Altamaha River, GA**
Sarah Widney, Indiana University
- 4:40-5:00 pm 1342 - **Behavior of Metals in Decomposing Litter in Contaminated Wetlands**
Jessica Brumley, National Research Council



Wednesday, May 30, 2018

Gold Coin

INVITED SYMPOSIA

9:45 am-11:35 am

Wetlands Management for Waterfowl & Its Myriad of Ecosystem Services I

Chair: David Koons, Colorado State University

- 9:55-10:15 am 1242 - **Integrating Science, Practice, and Policy in the North American Waterfowl Management Plan**
Jim Gammonley, Colorado Parks and Wildlife
- 10:15-10:35 am 1553 - **Recharging a Community Through Playa Conservation**
Anne Bartuszevige, Playa Lakes Joint Venture
- 10:35-10:55 am 1584 - **Working Land Solutions for Sustaining Waterfowl in the Intermountain West**
Josh Vest, Intermountain West Joint Venture
- 10:55-11:15 am 1495 - **Growing Stressors Affecting Prairie-Pothole Wetlands Require Merging Waterfowl Conservation with Ecosystem Services Approaches**
Michael Anteau, US Geological Survey, Northern Prairie Wildlife Research Center
- 11:15-11:35 am 1641 - **Multi-Beneficial Aquifer Recharge and Streamflow Augmentation Through Managed Wetlands for Waterfowl**
Jason Roudebush, Ducks Unlimited

1:00 pm-2:50 pm

Wetlands Management for Waterfowl & Its Myriad of Ecosystem Services II

Chair: David Koons, Colorado State University

- 1:10-1:30 pm 1618 - **Rapid Assessment of Wetland Management for Forage Production, Avian Use, and Cultural Ecosystem Services**
Adam Behney, Colorado Parks and Wildlife
- 1:30-1:50 pm 1612 - **Waterfowl as Umbrella Taxa for Wetland Management Decisions: Using Bayesian Belief Networks to Evaluate Potential for Other Taxa Under the Umbrella**
Maggie MacPherson, University of Missouri
- 1:50-2:10 pm 1571 - **Effects of Wetland Ephemerality on Bird Diversity in the Plains and Prairie Potholes Region**
Joanna Harter, University of Wyoming
- 2:10-2:30 pm 1585 - **Effects of Vernal Pool Hydroperiod on Larval Occupancy of Threatened Central California Tiger Salamanders**
Amanda Kissel, Conservation Science Partners
- 2:30-2:50 pm 1580 - **Addressing Salt Marsh Decline in New York City**
Ellen Hartig, City of New York Parks & Recreation

CONTRIBUTED SESSION

3:20 pm-5:00 pm

Peatlands

- 3:20-3:40 pm 1605 - **Carbon and Nutrient Sequestration and Storage in High Altitude Peatlands of Peru**
Siobhan Fennessy, Kenyon College
- 3:40-4:00 pm 1208 - **The Trials and Tribulations of Dating Recently Deposited Peats and Wetland Sediments**
Judith Drexler, US Geological Survey
- 4:00-4:20 pm 1232 - **Relative Recalcitrance of Drained and Intact Southeastern Peatlands to Decomposition**
Craig Stricker, US Geological Survey
- 4:20-4:40 pm 1445 - **A Revisit of 'Enzymatic Latch' Mechanism in Response to Long-Term Fertilization in a Minerotrophic Peatland**
Meng Wang, Northwest A&F University
- 4:40-5:00 pm 1430 - **Extracting Carbon Credits from Pocosin Peatlands in North Carolina: A New Approved ACR Accounting Method**
Curtis Richardson, Duke University Wetland Center



Wednesday, May 30, 2018

Mattie Silks

INVITED SYMPOSIA

9:45 am-11:35 am

Working in Wetlands I

Chairs: Scott Jecker, Whitenton Group, Inc.; Amber Robinson, HDR Engineering, Inc.; Jessica Brumley, National Research Council

- 9:55-10:15 am 1567 - **Life in Mitigation Banking: The Roles and Responsibilities of a Field Biologist**
Brighton Heard, Resource Environmental Solutions
- 10:15-10:35 am 1189 - **Life in Mitigation Banking: A Regulatory Perspective from the Private Industry**
Tiffany Hammond, Resource Environmental Solutions, LLC
- 10:35-10:55 am 1158 - **Navigating the Post PhD Slump**
Jessica Brumley, National Research Council
- 10:55-11:15 am 1090 - **Working in Wetlands - Industry Perspective**
Christine Johnston, Xcel Energy
- 11:15-11:35 am 1086 - **Why Would a Department of Transportation Hire Biologists?**
Rebecca Pierce, Colorado Department of Transportation

1:00 pm-2:50 pm

Working in Wetlands II

Chairs: Scott Jecker, Whitenton Group, Inc.; Amber Robinson, HDR Engineering, Inc.; Jessica Brumley, National Research Council

- 1:10-1:30 pm 1050 - **Owning and Operating an Environmental Consulting Business**
Scott Jecker, Whitenton Group, Inc.
- 1:30-1:50 pm 1107 - **Working in Wetlands: My Life as an Environmental Consultant**
Amber Robinson, HDR Engineering, Inc.
- 1:50-2:10 pm 1098 - **Jobs in Academia: From Science Support Staff to Professors**
John White, Louisiana State University
- 2:10-2:30 pm 1663 - **Working in Wetlands: Wetland Science in the Non-Profit World**
Maya MacHamer, Fourmile Watershed Coalition
- 2:30-2:50 pm 1226 - **Life After School: Developing a Professional Online Presence, Looking for Jobs, and Winning Over Hiring Managers**
Jessica Brumley, National Research Council

CONTRIBUTED SESSION

3:20 pm-5:00 pm

Sea Level Rise

- 3:20-3:40 pm 1257 - **Home Field Advantage? Observing the Potential of Local Adaptation of *Avicennia germinans* Establishment Dynamics Along an Intertidal Gradient**
Shannon Grogan, University of South Florida
- 3:40-4:00 pm 1600 - **Movin' on Up: Mycorrhizal Mutualisms and Assisted Migration of Coastal Plant Species**
Brad Delfeld, Southern Illinois University Carbondale
- 4:00-4:20 pm 1629 - **Saltwater Intrusion as a Driver of Community Structure in Coastal Riverine Floodplain Forest**
Elliott White, University of Florida
- 4:20-4:40 pm 1527 - **Evaluation of a Recently Created Tidal Marsh's Resiliency to Relative Sea-Level Rise**
Brock Kamrath, North Carolina State University
- 4:40-5:00 pm 1403 - **Response of Tidal Wetlands to Rising Sea Level in Three Estuaries along the US Southeast Atlantic Coast**
Elena Solohin, Indiana University



Wednesday, May 30, 2018

Independence

CONTRIBUTED SESSION

9:55 am-11:35 am

Conservation of Wetlands

- 9:55-10:15 am 1045 - **Bringing Cowardin to Alaska: Inference of Wetland and Deepwater Type from Landcover Mapping**
Anjanette Steer, University of Alaska Anchorage - Alaska Center for Conservation Science
- 10:15-10:35 am 1576 - **Wetlands of Colorado's Front Range**
Marianne Giolitto, City of Boulder
- 10:35-10:55 am 1404 - **Gathering Global Evidence on the Effects of Interventions to Conserve Wetland Vegetation: Peatlands as a First Step**
Nigel Taylor, Tour du Valat
- 10:55-11:15 am 1025 - **Mapping Groundwater Seepage in a North Dakota Fen Using Thermal Imaging**
Ogochukwu Ozotta, University of North Dakota
- 11:15-11:35 am 1336 - **Wildlife Use of Two Free Water Surface Constructed Wetlands in Texas**
Loretta Mokry, Alan Plummer Associates, Inc.

INVITED SYMPOSIA

1:00 pm-2:50 pm

Phytoremediation of Soil and Sediment in Wetlands I

Chairs: Ben LePage, Pacific Gas and Electric Company; David Tsao, BP Corporation

- 1:10-1:30 pm 1528 - **From the Oil Field to the Green Field**
David Tsao, BP Corporation
- 1:30-1:50 pm 1073 - **Phytoremediation Pilot Study for Arsenic-Impacted Coastal Soils and Sediments in Northern California**
Katie Wolf, ERM
- 1:50-2:10 pm 1269 - **Invasive Cattail Species Contributing to Remediation and Natural Recovery of a Crude Oil Impacted Wetland in the Amazon**
Kevin Morris, ERM
- 2:10-2:30 pm 1049 - **Treatment of Benzene Contamination Using Rhizoremediation at a Petrochemical Facility in Brazil**
Flavio Coelho, ERM
- 2:30-2:50 pm 1163 - **PHYTO-INTEGRATED™ Remediation System to Address Chlorobenzene Contaminated Groundwater in Saprolite Aquifer in South Carolina**
Edward Hollifield, ERM

3:10 pm-5:00 pm

Phytoremediation of Soil and Sediment in Wetlands II

Chairs: Ben LePage, Pacific Gas and Electric Company; David Tsao, BP Corporation

- 3:20-3:40 pm 1650 - **Contaminant Mitigation in Receiving Forests: Implications for Water Reuse and Storage**
Elizabeth Nichols, North Carolina State University
- 3:40-4:00 pm 1241 - **Lessons Learned: Application of Phytoremediation in Place of Conventional Pump and Treat Approach at a Hydrocarbon-impacted Site**
Brent Searcy, ETIC
- 4:00-4:20 pm 1532 - **From Brownfields to Greens Fees**
David Tsao, BP Corporation
- 4:20-4:40 pm 1068 - **Phytoremediation and Microbial Degradation Pilot Studies for a Former Solid Waste Management Unit in Northern California**
Ben LePage, Pacific Gas and Electric Company
- 4:40-5:00 pm 1417 - **Integrating Ecological Function into Natural Remediation Designs**
Karah Conklin, LT Environmental

