



MND60V

CONTENT CREATOR'S KIT



User Manual

1. About Your Camera

About this Manual

Congratulations on purchasing the Minolta MND60V Digital Camera!

The contents of this manual are subject to change without notice. Note that the example screens and product illustrations shown in this User's Guide may differ somewhat from the screens and configuration of the actual camera.

Copyright

This manual contains proprietary information protected by copyright. All rights are reserved. No part of this manual may be reproduced by any mechanical, electronic or other means, in any form, without prior written permission of Elite Brands Inc. © 2023.

FEDERAL COMMUNICATIONS COMMISSION INTERFERENCE STATEMENT

This equipment has been tested and found to comply with the limits for a Class B digital device, pursuant to Part 15 of the FCC Rules. These limits are designed to provide reasonable protection against harmful interference in a residential installation. This equipment generates, uses and can radiate radio frequency energy and, if not installed and used in accordance with the instructions, may cause harmful interference to radio communications. However, there is no guarantee that interference will not occur in a particular installation. If this equipment does cause harmful interference to radio or television reception, which can be determined by turning the equipment off and on, the user is encouraged to try to correct the interference by one or more of the following measures:

- Reorient or relocate the receiving antenna.
- Increase the separation between the equipment and receiver.
- Connect the equipment into an outlet on a circuit different from that to which the receiver is connected.
- Consult the dealer or an experienced radio/TV technician for help.

CAUTION:

Any changes or modifications not expressly approved by the party responsible for compliance could void the user's authority to operate the equipment.

This device complies with Part 15 of the FCC Rules. Operation is subject to the following two conditions:

- (1) This device may not cause harmful interference and
- (2) This device must accept any interference received, including interference that may cause undesired operation.

RF Exposure Warning

This equipment complies with FCC RF radiation exposure limits set forth for an uncontrolled environment. This equipment must be installed and operated in accordance with provided instructions and must not be co-located or operating in conjunction with any other antenna or transmitter. End-users and installers must be provided with antenna installation instructions and transmitter operating conditions for satisfying RF exposure compliance.

1. About Your Camera

FCC: SAR standard Value: 1.6 W/Kg, Maximal Measure: 0.4 W/kg

CE Mark Warning

This is a Class B product, in a domestic environment, this product may cause radio interference, in which case the user may be required to take adequate measures.

Safety and Handling Precautions

Camera Information

- Do not disassemble or attempt to service the camera yourself.
- Do not expose the camera to moisture, or extreme temperatures.
- Allow the camera to warm up when moving from cold to warm temperatures.
- Do not touch and put pressure on the camera lens.
- Do not expose the lens to direct sunlight for extended periods.
- Do not use abrasive chemicals, cleaning solvents or strong detergents to clean the product. Wipe the product with a slightly damp soft cloth.
- Do not use the flash or LED Light near a person's eyes to prevent possible eye injury.
- To prevent you from falling over or resulting in traffic accident, please do not use the camera while you are walking, driving or riding a vehicle.
- Please handle the camera strap with care, and never place the strap around the neck of an infant or child. Wrapping the strap around a neck may cause suffocation.
- Do not subject the LCD screen to impact.
- To prevent the risk of fire or electric shock, do not expose the inside of this product to rain or moisture.

Battery Information

- Turn off the camera before installing or removing the battery.
- Use only the provided batteries or type of battery and charger that came with your camera. Using other types of battery or charger may damage the device and invalidate the warranty.
- Inserting the battery upside down can cause damage to the product and possibly cause an explosion.
- When the camera is used for an extended period of time, it is normal for the camera body to feel warm.
- Download all pictures and remove the battery from the camera if you are going to store the camera for a long period of time.
- Risk of explosion if battery is replaced by an incorrect type. Dispose of used batteries according to the instructions.
- Please keep the batteries out of the reach of children to prevent from swallowing the batteries, which might cause poisoning.
- If the battery's color or shape changes in any way, stop using the battery immediately.

1. About Your Camera

USB Adaptor Information

- Do not expose the adapter to high temperatures or moisture places. Otherwise, it may cause fire or electric shock.
- Do not attempt to repair, disassemble, change or transform the adapter.
- Avoid sudden changes in temperature, which may cause condensation on the adapter's internal surfaces. Please do not use it immediately in this situation.
- Do not touch the plug with wet hands. Otherwise, it may cause electric shock.
- Do not use the travel voltage converter or AC/DC power inverter. Otherwise, it may cause damage, overheating, malfunction or fire to the camera.

Notes about Opening and Closing the Battery Door

- Make sure the camera and your hands are not wet.
- Make sure that there are no debris inside the battery-chamber or memory card slot.
- Make sure that the battery cover is firmly closed and the security lock is in the lock position.

Precautions When Cleaning

- Do not puncture the microphone or speaker openings with a sharp implement.
- If the inside of the camera is damaged, the waterproof performance will deteriorate.
- Do not use soap, natural detergents, or chemicals such as benzene for cleaning.

Do Not Apply Strong Impact to the Camera

The product may malfunction if subjected to strong shock or vibration. In addition, do not touch or apply force to the lens.

Avoid Sudden Changes in Temperature

Sudden changes in temperature, such as when entering or leaving a heated building on a cold day, can cause condensation to form inside the device. To prevent condensation, place the device in a carrying case or a plastic bag before exposing it to sudden changes in temperature.

Keep Away from Strong Magnetic Fields

Do not use or store this device in the vicinity of equipment that generates strong electromagnetic radiation or magnetic fields. Doing so could result in loss of data or camera malfunction.

Do Not Point the Lens at Strong Light Sources for Extended Periods

Avoid pointing the lens at the sun or other strong light source light sources for extended periods when using or storing the camera. Intense light may cause the image sensor to deteriorate or produce a white blur effect in photographs.

1. About Your Camera

Turn the Product Off before Removing or Disconnecting the Power Source or Memory Card

Do not remove the battery while the product is on, or while images are being saved or deleted. Forcibly cutting power in these circumstances could result in loss of data or cause damage to the memory card or internal circuitry.

Notes about the LCD Screen

- The LCD Screen is constructed with extremely high precision; At least 99.99% of pixels are effective, with no more than 0.01% being missing or defective. Hence, while these displays may contain pixels that are always lit (white, red, blue or green) or always off (black), this is not a malfunction and has no effect on images recorded with the device.
- Images viewed on the LCD screen may be difficult to see under certain lighting.
- Do not apply pressure to the LCD screen, as this could cause damage or malfunction.

The Battery

Precautions for Use

- Note that the battery may become hot after use.
- Do not use the battery at ambient temperatures below 0°C (32°F) or above 40°C (104°F) as this could cause damage or malfunction.
- If you notice any abnormalities such as excessive heat, smoke, or an unusual smell coming from the battery, immediately discontinue use and consult your retailer.
- After removing the battery from the camera or optional battery charger, put the battery in a plastic bag, etc. in order to insulate it.

Charging the Battery

Check the battery level before using the camera and replace or charge the battery if necessary.

- Charge the battery indoors with an ambient temperature of 5°C (41°F) to 35°C (95°F) before use.
- A high battery temperature may prevent the battery from charging properly or completely, and may reduce battery performance. Note that the battery may become hot after use; wait for the battery to cool before charging. When charging the battery inserted into this camera using the Charging AC Adapter or a computer, the battery is not charged at battery temperature below 5°C (41°F) or above 55°C (131°F).
- When the battery is between 45°C (113°F) - 55°C (131°F), the chargeable capacity may decrease.
- Do not continue charging once the battery is fully charged as this will result in reduce battery performance.
- The battery temperature may increase during charging. However, this is not a malfunction.

1. About Your Camera

Using the Battery When Cold

On cold days, the capacity of batteries tends to decrease. If an exhausted battery is used at a low temperature, the camera may not turn on. Keep spare batteries in a warm place and exchange as necessary. Once warmed, a cold battery may recover some of its charge.

Recycling Used Batteries

Replace the battery when it no longer holds a charge. Used batteries are a valuable resource. Please recycle used batteries in accordance with local regulations.

Cleaning After Using the Camera

Use a blower to remove any dust or lint that adheres to the lens, monitor or camera body. To remove fingerprints or other stains that cannot be removed with a blower, gently wipe the parts with a soft dry cloth. If you wipe with too much pressure or with a rough cloth, it may damage the camera or cause a malfunction.

Storage

If you do not intend to use the camera for an extended period, remove the battery and avoid storing the camera in any of the following types of locations:

- Places that are poorly ventilated or subject to humidity of over 60%
- Place exposed to temperatures above 50°C (122°F) or below -10°C (14°F).
- Place next to equipment that produces strong electromagnetic field, such as television or radios.

To prevent mold or mildew, take the camera out of storage at least once a month, and turn it on and release the shutter a few times before putting it away again.

1. About Your Camera

1.1 Camera Interface



1. About Your Camera

1.2 Button Function Description

Function	Description
Power	Tap once to power on. Tap again to power off.
Shutter	In All Photo Modes: Half-press to focus an image and fully press to capture a photo. In All Video Modes: Half-press to focus the image on the screen and fully press to start and stop recording. In Video Playback: Press to start playing a recorded video, press again to stop.
Macro Button	In All Photo Modes: Press once to activate macro mode, press again to deactivate macro mode.
Zoom In	In Photo or Video: Press to zoom in. In Playback: Press and hold to zoom in on an image.
Zoom Out	In Video or Photo: Press to zoom out. In Playback: Press and hold to zoom out on a zoomed in image, or to see multiple images on the screen at once.
Ok Mode	In Photo or Video: Tap to enter the mode selection screen. In Menus: Tap to enter submenus and to confirm selected settings.
Up Flash	In Photo: Tap to change the flash setting from Off to Auto to On. In Playback: Tap to scroll through files when viewing multiple files on the screen at once. In Playback: Tap to move the image on the screen while zoomed in. In Menus: Tap to scroll through menus and submenus.
Down Delete	In Photo or Video: Press to access the delete menu for the last captured file. In Playback: Tap to scroll through files when viewing multiple files on the screen at once. In Playback: Tap to move the image on the screen while zoomed in or cropping an image. In Menus: Tap to scroll through menus and submenus.

1. About Your Camera

Left Self Timer	In Photo: Tap to change the self timer setting from Off to 2 second delay to 5 second delay and to 10 second delay. In Playback: Tap to scroll through saved files. In Playback: Tap to move the image on the screen while zoomed in or cropping an image. In Menus: Tap to scroll through menus and submenus.
Right Playback	In Photo or Video: Press to enter playback mode. In Playback: Tap to scroll through saved files. In Playback: Tap to move the image on the screen while zoomed in or cropping an image. In Menus: Tap to scroll through menus and submenus.
Display Button	In Photo or Video: Press to change what is displayed on the LCD screen and to turn the LCD screen off and on.
Lens	Front capture device for all video and photo.
External Lens Interface	Attachment point for the removable lenses.
Flash Extend Switch	Switch used to extend the flash.
USB Port Cover	Door to cover the USB-C port.
Battery Door	Door to cover the battery compartment.
Tripod Mount	Mount port for attaching to a tripod nut.
Flash	LED Flash used to help capture images in dark environments.
Memory Card Slot	Used for inserting a memory card.
Mic Port	Used to connect an external microphone.
USB-C Port	Used to charge the camera and for connecting to a computer.

2. First Use

2. First Use

2.1 To Open the Battery Door

Unlock the battery door by sliding the battery door latch toward the center of the camera. Use a fingernail or other pointy object when sliding the latch to get a better grip. When the latch is fully open, the door will swing up.



2.2 Installing the Battery

Insert the lithium-ion battery into the battery compartment with the metal contacts facing the inside of the camera. The battery can only be inserted one way.



2.3 Installing the Memory Card

Insert the included Micro SD memory card to record and store your videos and photos. When the battery is low, media stored on the memory card will not be erased. Please insert the SD memory card by following the steps below:

1. Ensure that the camera is powered off.
2. Insert the memory card. Ensure that the metal contacts are inserted first.



2. First Use

Push the memory card down until you hear an audible click.

The memory card can only be inserted in one way. Do not force the card in if it will not go in smoothly.

4. To remove the memory card, simply push in and the card will eject back out.

NOTE:

- Please format the memory card before using the camera (Caution, this will erase all data on the card).
- Do not remove or insert the memory card when recording. It may damage the card or cause data loss.
- Memory card rating must be Class 10 or above.

2.4 Charging the Battery

Connect your camera to the included AC adaptor with the USB cable provided for charging. Insert the small end of the USB plug into the camera's port under the USB port door, and the larger end in to the included AC adaptor. While charging the camera with the camera turned off, the LED indicator light will light up solid red, when finished charging the light will turn off. While charging the camera with the camera powered on, the battery symbol on the LCD screen will show as red.



2.5 Powering the Camera On/Off

Tap the **POWER** button once to power the camera on. To power the camera off, tap the **POWER** button once.

If the camera's battery is low, a "Low Power" message will display on the screen and it will automatically shut down within a few seconds to prevent

2. First Use

memory corruption or loss.

2.6 Switching Modes

Press the **MODE/OK** button to access the mode selection screen. In the mode selection screen, you can select the following modes: Photo, Interval Photo, Photo Burst, Video, Slow Motion, Loop Recording, and Time Lapse. While in mode selection, press the **LEFT** or **RIGHT** buttons to highlight your desired mode, then press the **MODE/OK** button to enter that mode. The corresponding mode will be displayed in the top left corner of the screen.

2.7 Connecting to a Computer

Your camera can connect to a computer to transfer photo and video files for viewing and editing, you can also use the camera as a webcam or you can use your computer to charge the camera. Once connected and powered on, the camera's screen will show "Charge mode", where you can use the camera as normal while it charges, "Mass storage mode", where you can access the stored files from your computer, and "PC camera", where you can use the camera as a web cam. Use the **UP** or **DOWN** buttons to select your desired mode. Press the **MODE/OK** to select your desired mode.

2.8 Flash

The LED flash is used to help brighten dark environments allowing you to capture images with clarity. The flash can be extended away from the camera better illuminating a scene. To extend the flash, simply slide the flash extend button towards the center of the camera and the flash will pop up. Simply push the flash down until you hear an audible click to lock the flash. To activate the flash, simply press the **UP/FLASH** button. The flash modes available are Off, On and Auto. The active flash mode will be displayed on the left side of the screen. **Please note: flash is only active in photo modes. The flash should always be locked in the down position when not using the camera to protect it from damage.**

2.9 Using the Zoom Function

This camera has a digital zoom function. To operate the zoom function, press the **ZOOM-IN** button to zoom in closer to the subject and press the **ZOOM-**

2. First Use

OUT button to zoom away from the subject.

2.10 Auto Focus

Your camera is equipped with auto focus allowing you to capture photos with ease. The camera will automatically focus the lens when moving the camera from subject to subject, you can also manually focus the camera on a specific subject. To manually focus the camera, half press the **SHUTTER** button until the red box on the screen turns green. The subject surrounded by the box will now be in focus. Then fully press the **SHUTTER** button to capture the image. Please note, auto focus is only active in photo modes. The auto focus feature can also be deactivated. See section 3.4.9 for more information.

2.11 Macro Mode

Your camera has a built in Macro function that allows the camera to take extreme close-up photographs of small objects, like insects, flowers and more, and show them larger than life size in the photograph. To activate Macro mode, simply press the **MACRO** button once, press it again to turn it off. Macro mode works best when the macro lens is attached to the camera. See section 2.12.1 for instructions on how to mount the macro lens.

2.12 Accessories

Your camera comes with a number of different accessories that can be attached to or used with the camera.

2.12.1 Lenses

Your camera includes two lenses that can be attached to your camera, one is a macro lens and the other is a wide-angle lens. The macro lens is used to take extreme close-up photographs of small objects, like insects, flowers and more, and show them larger than life size in the photograph. The wide-angle lens is used to capture an image with a much wider field of view allowing you to capture more of the scene. Follow the steps below for instructions on how to mount and remove the lenses.

When first taking the lenses out of the box, they may be connected together, to separate them, while looking at the back (the smaller side) use one hand to hold the large front of the lens and use the other hand to rotate the back counter-clockwise until the two lenses separate.

2. First Use

Macro Lens

The smaller lens piece is the macro lens. To use this lens, line up the lens with the external lens interface on the front of the camera and then rotate the lens clockwise until it is tight. It does not matter which side of the lens is attached to the camera. **Please note: do not overtighten the lens, this may cause the lens to get stuck and may cause it to become damaged.** Once the lens is attached to the camera, power the camera on and press the MACRO button to enter macro mode. The camera will now be able to take extreme close-up images. **Please note: when the macro lens is attached, you will only be able to capture macro images, all other images will appear extremely blurry.** To remove the macro lens, simply rotate the lens counter-clockwise until the lens separates from the camera.



Wide-Angle Lens

The wide-angle lens only works when attached to the macro lens. If the two lenses are separated, attach the macro lens to the wide-angle lens by lining them up and then rotating the macro lens clockwise until tight. Then, attach the combined lenses to the camera. **Please note: do not overtighten the lens, this may cause the lens to get stuck and may cause it to become damaged.** The image on the screen will now show a much wider view. To remove the lenses, simply rotate the lens counter-clockwise until the lens separates from the camera.

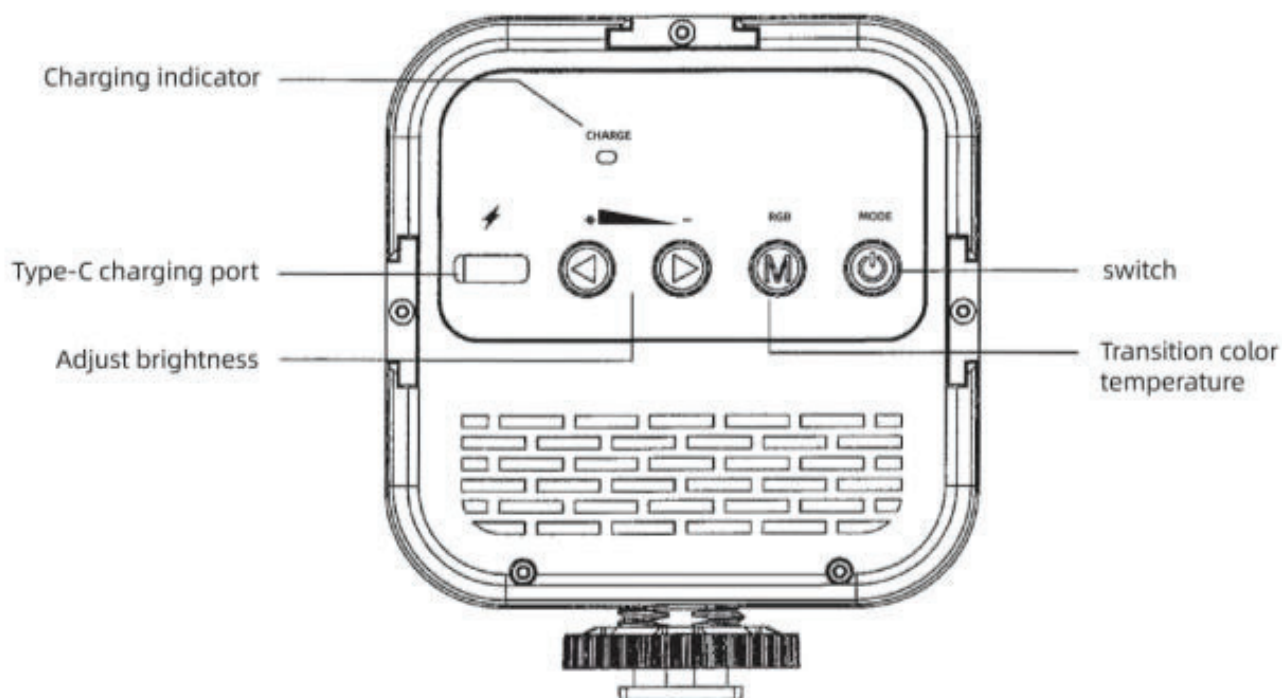


2.12.2 LED Light

When trying to capture images or record videos at night or in a dark environment, and the built-in flash is not strong enough, the LED spotlight should be used. To power on the light, press and hold the **POWER** button for 3 seconds, press and hold the **POWER** button again for 3 seconds to power off. While powered on, press the **MODE** button to change the color of the

2. First Use

light. To increase the brightness of the light, press the **BRIGHTNESS-UP** button and press the **BRIGHTNESS-DOWN** button to decrease the brightness. To charge the light, insert the small end of the USB plug into the LED light's port under on the back of the light, and the larger end in to the included AC adaptor. While charging, the LED indicator light will light up solid red, when finished charging the light will be solid green.



To attach the LED light to the tripod, simply slide the LED light mounting tab into the mounting slot on one of the accessory holders. Then, rotate the LED light locking screw, located directly above the mounting tab, clockwise until tight. **Please note, do not over tighten the locking screw, this may cause the light to be stuck or may cause damage.** To remove the LED light, simply rotate the locking screw counter-clockwise until loose and then slide the light off of the accessory holder.

2.12.3 Stereo Microphone

The included stereo microphone gives you the ability to capture better sound quality. This microphone includes a wind-guard that helps block the sound of the wind. When using the stereo microphone indoors, you may remove the wind-guard for a clearer, unobstructed recording experience.

To operate the stereo microphone, simply slide the power switch on the

2. First Use

microphone to the 0dB position for low sensitivity, or to the +20dB position for high sensitivity, to turn it off, simply slide the power switch to the Off position. When using the microphone with the camera, the microphone audio cable must be plugged into the microphone port located directly above the camera's USB port cover.

The stereo microphone is powered by 1 x AAA 1.5V battery. The battery comes preinstalled in the microphone but it is wrapped in plastic. The battery compartment is located on the side of the microphone. To open the battery compartment, slide the battery door towards the back of the microphone then remove the door. With the battery compartment open, remove the battery and take off the plastic wrapping that is covering the battery. Be careful to not puncture the battery or cut your hands while removing the plastic. When the plastic has been removed, insert the battery into the battery compartment, make sure to insert it in the correct orientation. Then close the battery door by sliding it towards the front of the microphone.

To attach the wind-guard, simply slide the wind-guard onto the microphone. To attach the microphone to the tripod, simply slide the microphone mounting tab into the mounting slot on one of the accessory holders. Then, rotate the microphone locking screw, located directly above the mounting tab, clockwise until tight. **Please note, do not over tighten the locking screw, this may cause the microphone to be stuck or may cause damage.** To remove the microphone, simply rotate the locking screw counter-clockwise until loose and then slide the light off of the accessory holder.

2.12.4 Tripod with Built-In Battery and Removable Remote Control

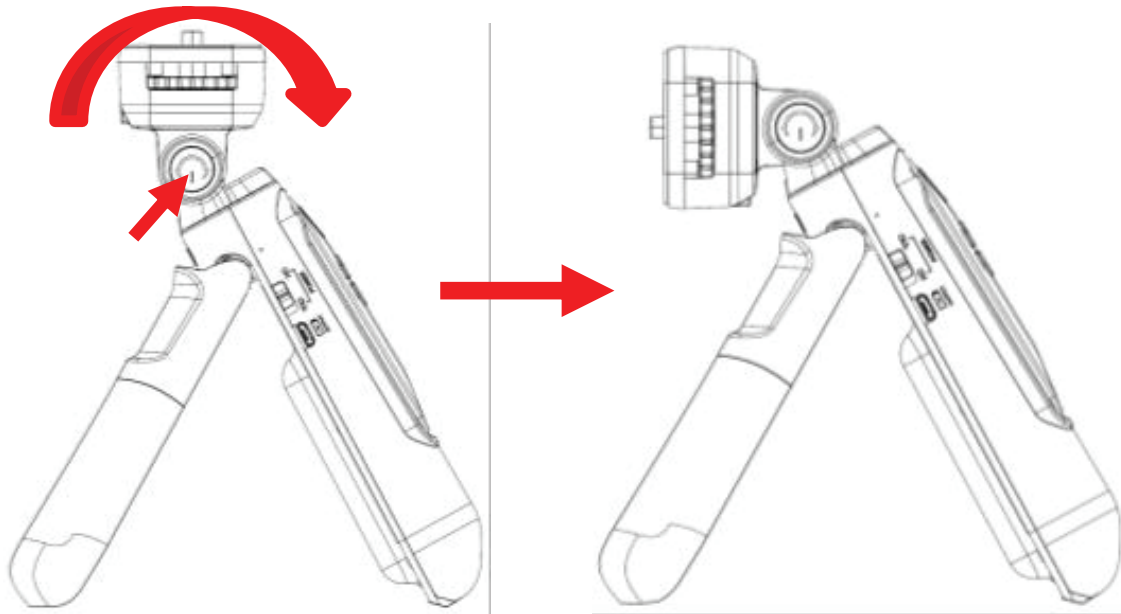
The included tripod has a number of different uses that will make capturing photos and videos effortless.

The tripod can be used as a stand for your camera when the legs are extended, or it can be used as a handle for easy carrying when the legs are folded. To extend the legs, simply pull the bottom of the leg away from the tripod until it stops, repeat this step with the other leg. **Please note, the tripod should never be set on a surface with the camera attached if the legs are not fully extended and the tripod can only be placed on flat**

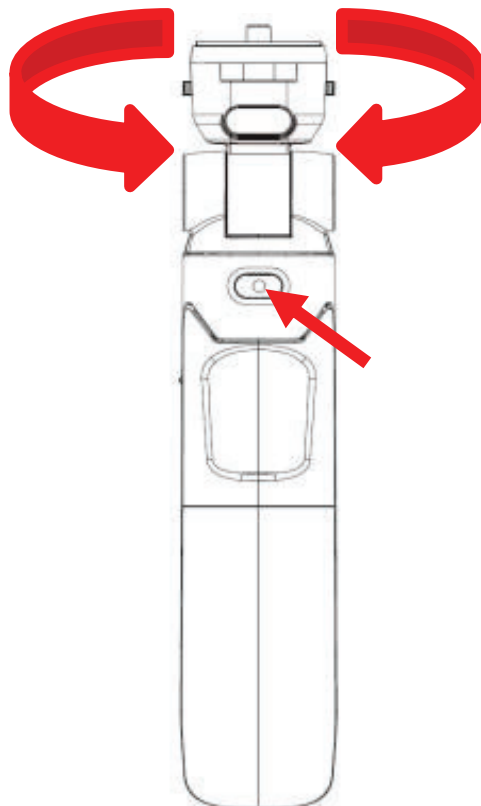
2. First Use

surfaces. To fold the legs, simply push the bottom of the legs toward the tripod until they stop.

The camera mount on the tripod can be rotated vertically, simply push in the vertical rotate mount button and then rotate the mount to the position you desire. The camera mount can be rotated a total of approximately 135°.



The camera mount can also be rotated horizontally, simply push in the

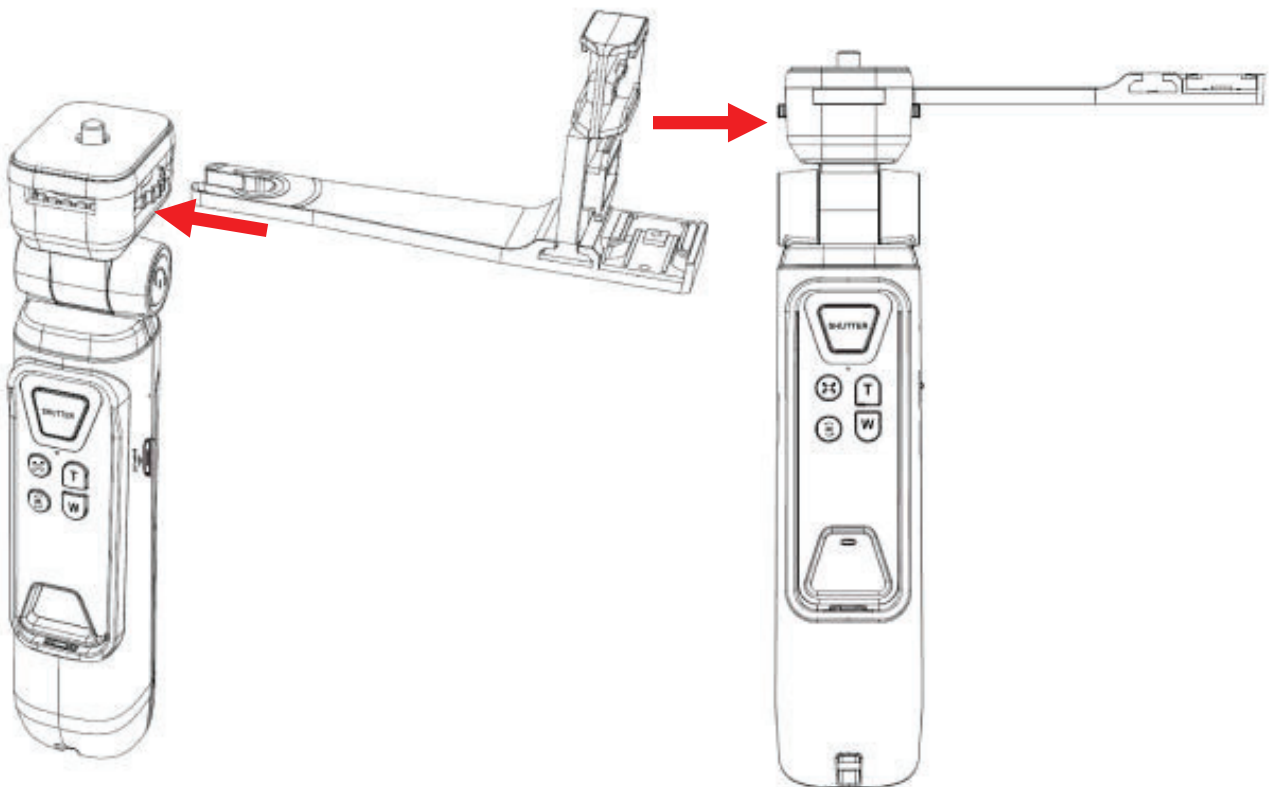


2. First Use

horizontal rotate mount button and then rotate the mount to the position you desire. The camera mount can be rotated a full 360°.

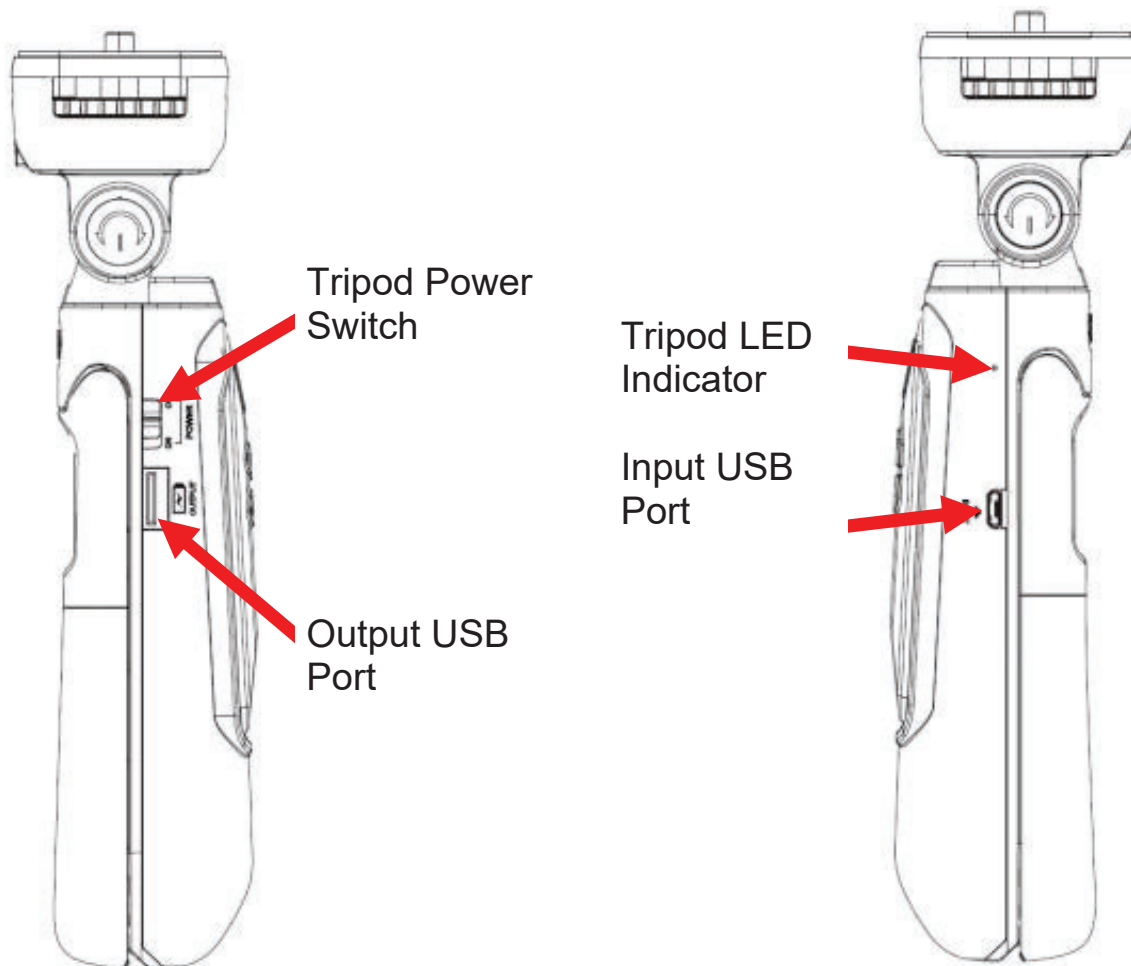
To mount the camera onto the tripod, line up the tripod screw with the tripod mount socket on the camera and then rotate the tripod screw wheel counter-clockwise. Before tightening the wheel fully, orient the camera in the direction to want it to be facing and then continue rotating the wheel until tight. **Please note, do not overtighten the locking screw, this may cause the camera to be stuck or may cause damage.**

To attach the accessory holders to the tripod, simply push them into the slot on the side of the tripod until you hear a click. There is one slot on each side of the tripod. Please note, the camera should be mounted on the tripod before attaching the accessory holders. If the accessory holders are attached first, it may be extremely difficult to tighten the camera to the tripod. If the tripod screw wheel is too tight, it may be very difficult to attach one of the accessory holders, if this happens simply loosen the tripod screw wheel a little until the accessory holder can be inserted.



2. First Use

The tripod has a built-in backup battery that you can use to charge the camera, allowing you to keep on recording without the need to stop and charge the camera. To use the tripod to charge your camera, insert the large end of the USB cable into the USB port on the tripod that is labeled “Output” and is located below the power switch. Then, insert the small end of the USB cable into the charging port on the camera, then slide the power switch on the tripod to “On”. While powered on, the LED indicator light on the tripod will light up blue.

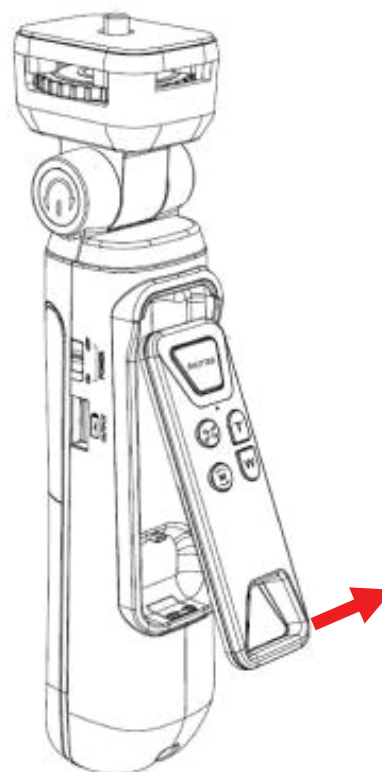


To charge the tripod, simply plug in the small end of the USB cable into the USB port on the tripod labeled “Input” and the larger end of the USB cable into the AC adaptor. When charging, the LED indicator on the tripod will flash red, when it is fully charged, the LED indicator will light up solid red.

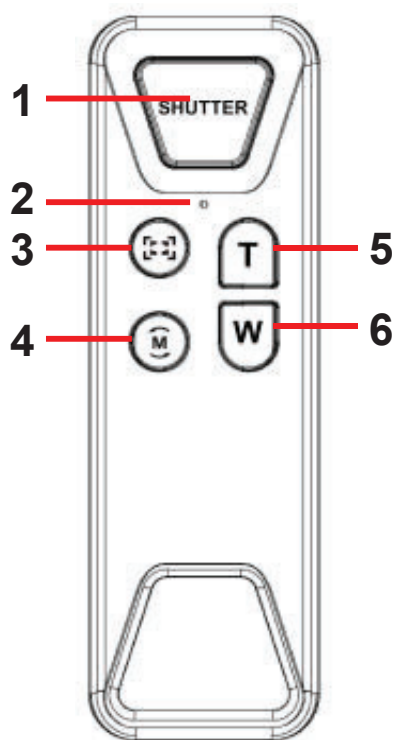
2. First Use

The tripod includes a remote control that can be used to control your camera. To remove the remote from the storage slot on the tripod, simply insert your finger into the opening on the remote and pull out on the bottom edge of the opening. To return the remote to the storage slot, simply insert the top of the remote into the top of the storage slot and then push in the bottom of the remote until you hear a click.

The maximum range of the remote is approximately 30 feet. The camera needs to be powered on and a memory card installed for the remote to work properly.



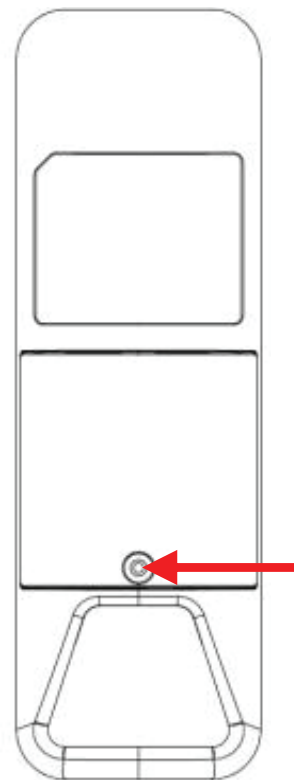
The remote functions can be found below;



Function	Description
1. Shutter	In all Photo modes: Tap to capture an image. In all Video modes: Tap once to start recording, tap again to stop recording.
2. LED Indicator	Shows the status of the remote
3. Focus	Press and hold to focus the camera
4. Mode Rotate Screen	Press once to rotate the image on the screen. Press and hold to switch between Photo and Video modes.
5. Zoom In	Press to zoom in
6. Zoom Out	Press to zoom out

2. First Use

The remote operates on a single CR2032 button cell battery. To replace the battery, remove the battery door by unscrewing the battery door screw on the back of the remote. Then replace the battery, make sure the battery is in the correct orientation with the words on the top, then replaces the battery door and tighten the screw.



3. Using the Camera

3. Using the Camera

3.1 Photo Shooting

Power the camera on and it will be ready to take pictures right away. You may tap the **MODE** button once to switch to another mode or press and hold the **MODE** button to access the mode selection screen.

1. Line up your shot by looking at the LCD screen to see what is in the shot.
2. Hold the camera steady and press the **SHUTTER** button to capture a photo.
3. The number of photos that can be captured at a particular resolution will be displayed in the top right corner of the screen.
4. The number of photos that can be captured will be displayed as 0 on the screen if there is no memory card inserted in the camera's memory card slot.
5. The number of remaining photos is determined by the selected photo resolution. The higher the photo resolution, the lower the number of photos you are able to save to the memory card. Before capturing any photos, you can select a preferred photo resolution.

3.1.1 Photo Resolution

This function sets the photo resolution. The higher the resolution, the greater the photo quality and the larger the file size of the photo.

1. In Photo Mode press the **MENU** button.
2. Use the **UP** or **DOWN** buttons to highlight the Camera icon on the left side of the screen.
3. Then press the **RIGHT** button to enter the settings menu.
4. Select '*Photo Resolution*' using the **UP** or **DOWN** buttons and press the **MODE/OK** button to enter the '*Photo Resolution*' menu.
5. Use the **UP** or **DOWN** buttons to navigate the menu, and press the **MODE/OK** button to confirm your selected resolution (*64MP, 56MP, 48MP, 40MP, 30MP, 24MP, 18MP, 12MP*).
6. Press the **MENU** button to exit the settings menu without making a selection.

3.1.2 White Balance

White Balance changes the color of light in your pictures, making it seem warmer or cooler depending on how the light you're shooting in affects the

3. Using the Camera

frame.

1. In Photo Mode press the **MENU** button.
2. Use the **UP** or **DOWN** buttons to highlight the Camera icon on the left side of the screen.
3. Then press the **RIGHT** button to enter the settings menu.
4. Select '*White Balance*' using the **UP** or **DOWN** buttons and press the **MODE/OK** button to enter the '*White Balance*' menu.
5. Use the **UP** or **DOWN** buttons to navigate the menu, and press the **MODE/OK** button to confirm your selected option (*Auto, Sunny, Cloudy, Incandescent, Fluorescent*).
6. Press the **MENU** button to exit the settings menu without making a selection.

3.1.3 Exposure

This function adjusts the frame brightness in your photograph.

1. In Photo Mode press the **MENU** button.
2. Use the **UP** or **DOWN** buttons to highlight the Camera icon on the left side of the screen.
3. Then press the **RIGHT** button to enter the settings menu.
4. Select '*Exposure*' using the **UP** or **DOWN** buttons and press the **MODE/OK** button to enter the '*Exposure*' menu.
5. Use the **UP** or **DOWN** buttons to navigate the menu, and press the **MODE/OK** button to confirm your selected option (-3, -2, -1, 0, 1, 2, 3).
6. Press the **MENU** button to exit the settings menu without making a selection.

3.1.4 Color Effects

This function sets the color filter effect of an image.

1. In Photo Mode press the **MENU** button.
2. Use the **UP** or **DOWN** buttons to highlight the Camera icon on the left side of the screen.
3. Then press the **RIGHT** button to enter the settings menu.
4. Select '*Color Effects*' using the **UP** or **DOWN** buttons and press the **MODE/OK** button to enter the '*Color Effects*' menu.
5. Use the **UP** or **DOWN** buttons to navigate the menu, and press the **MODE/OK** button to confirm your selected option (*Normal, Black & White,*

3. Using the Camera

Negative Film, Nostalgia, Red, Green, Blue).

6. Press the **MENU** button to exit the settings menu without making a selection.

3.1.5 Sharpness

This function adjusts the visible detail of a photograph.

1. In Photo Mode press the **MENU** button.
2. Use the **UP** or **DOWN** buttons to highlight the Camera icon on the left side of the screen.
3. Then press the **RIGHT** button to enter the settings menu.
4. Select '*Sharpness*' using the **UP** or **DOWN** buttons and press the **MODE/OK** button to enter the '*Sharpness*' menu.
5. Use the **UP** or **DOWN** buttons to navigate the menu, and press the **MODE/OK** button to confirm your selected option (*Sharp, Normal, Soft*).
6. Press the **MENU** button to exit the settings menu without making a selection.

3.1.6 Flash

This function allows to change the flash settings.

1. In Photo Mode press the **MENU** button.
2. Use the **UP** or **DOWN** buttons to highlight the Camera icon on the left side of the screen.
3. Then press the **RIGHT** button to enter the settings menu.
4. Select '*Flash*' using the **UP** or **DOWN** buttons and press the **MODE/OK** button to enter the '*Flash*' menu.
5. Use the **UP** or **DOWN** buttons to navigate the menu, and press the **MODE/OK** button to confirm your selected option (*Auto, Off, On*).
6. Press the **MENU** button to exit the settings menu without making a selection.

3.1.7 ISO

This function adjusts the light sensitivity in your photograph.

1. In Photo Mode press the **MENU** button.
2. Use the **UP** or **DOWN** buttons to highlight the Camera icon on the left side of the screen.
3. Then press the **RIGHT** button to enter the settings menu.

3. Using the Camera

4. Select '*ISO*' using the **UP** or **DOWN** buttons and press the **MODE/OK** button to enter the '*ISO*' menu.
5. Press the **UP** or **DOWN** buttons to navigate the menu, and press the **MODE/OK** button to confirm your selected option (*Auto, 100, 200, 400, 800, 1600, 3200, 6400*).
6. Press the **MENU** button to exit the settings menu without making a selection.

3.1.8 Time Stamp

This setting allows you to imprint a date & time onto your captured image files. Once an image file is captured with the imprint, the imprint cannot be removed.

1. In Photo Mode press the **MENU** button.
2. Use the **UP** or **DOWN** buttons to highlight the Camera icon on the left side of the screen.
3. Then press the **RIGHT** button to enter the settings menu.
4. Select '*Time Stamp*' using the **UP** or **DOWN** buttons and press the **MODE/OK** button to turn the time stamp on or off. When On, a check mark will be shown.

3.1.9 Digital Image Stabilizer

This function enables photo capture in high speed and low-light by electronically minimizing motion blur and reducing camera shake.

1. In Photo Mode press the **MENU** button.
2. Use the **UP** or **DOWN** buttons to highlight the Camera icon on the left side of the screen.
3. Then press the **RIGHT** button to enter the settings menu.
4. Select '*Digital Image Stabilizer*' using the **UP** or **DOWN** buttons and press the **MODE/OK** button to turn the feature on or off. When On, a check mark will be shown.

3. Using the Camera

3.2 Interval Photo

In the interval photo mode, the camera will take a single photo at a set interval until stopped.

To enter interval photo mode, power the camera on and press and hold the **MODE** button. Use the **LEFT** or **RIGHT** buttons to select Interval Photo and press the **MODE/OK** button to enter the Interval Photo Mode.

1. Line up your shot by looking at the LCD screen to see what is in the shot.
2. Hold the camera steady and press the **SHUTTER** button to capture a photo and start the countdown.
3. At the end of each countdown, a new photo will be captured, each captured photo will be saved as an individual file.
4. To end the interval photo, press the **SHUTTER** button.
5. The number of photos that can be captured at a particular resolution will be displayed in the top right corner of the screen.
6. The number of photos that can be captured will be displayed as 0 on the screen if there is no memory card inserted in the camera's memory card slot.
7. The number of remaining photos is determined by the selected photo resolution. The higher the photo resolution, the lower the number of photos you are able to be save to the memory card. Before capturing any photos, you can select a preferred photo resolution.

3.2.1 Photo Resolution

This function sets the photo resolution. The higher the resolution, the greater the photo quality and the larger the file size of the photo.

1. In Interval Photo Mode press the **MENU** button.
2. Use the **UP** or **DOWN** buttons to highlight the Interval Photo icon on the left side of the screen.
3. Then press the **RIGHT** button to enter the settings menu.
4. Select '*Photo Resolution*' using the **UP** or **DOWN** buttons and press the **MODE/OK** button to enter the '*Photo Resolution*' menu.
5. Use the **UP** or **DOWN** buttons to navigate the menu, and press the **MODE/OK** button to confirm your selected resolution (64MP, 56MP, 48MP, 40MP, 30MP, 24MP, 18MP, 12MP).
6. Press the **MENU** button to exit the settings menu without making a selection.

3. Using the Camera

3.2.2 Interval Duration

This function will let you set the amount of time between each photo.

1. In Interval Photo Mode press the **MENU** button.
2. Use the **UP** or **DOWN** buttons to highlight the Interval Photo icon on the left side of the screen.
3. Then press the **RIGHT** button to enter the settings menu.
4. Select '*Interval Duration*' using the **UP** or **DOWN** buttons and press the **MODE/OK** button to enter the '*Interval Duration*' menu.
5. Use the **UP** or **DOWN** buttons to navigate the menu, and press the OK button to confirm your selected option (*3 Seconds, 10 Seconds, 15 Seconds, 20 Seconds, 30 Seconds*).
6. Press the **MENU** button to exit the settings menu without making a selection.

3.2.3 White Balance

White Balance changes the color of light in your pictures, making it seem warmer or cooler depending on how the light you're shooting in affects the frame.

1. In Interval Photo Mode press the **MENU** button.
2. Use the **UP** or **DOWN** buttons to highlight the Interval Photo icon on the left side of the screen.
3. Then press the **RIGHT** button to enter the settings menu.
4. Select '*White Balance*' using the **UP** or **DOWN** buttons and press the **MODE/OK** button to enter the '*White Balance*' menu.
5. Use the **UP** or **DOWN** buttons to navigate the menu, and press the **MODE/OK** button to confirm your selected option (*Auto, Sunny, Cloudy, Incandescent, Fluorescent*).
6. Press the **MENU** button to exit the settings menu without making a selection.

3.2.4 Exposure

This function adjusts the frame brightness in your photograph.

1. In Interval Photo Mode press the **MENU** button.
2. Use the **UP** or **DOWN** buttons to highlight the Interval Photo icon on the left side of the screen.
3. Then press the **RIGHT** button to enter the settings menu.

3. Using the Camera

4. Select '*Exposure*' using the **UP** or **DOWN** buttons and press the **MODE/OK** button to enter the '*Exposure*' menu.
5. Use the **UP** or **DOWN** buttons to navigate the menu, and press the **MODE/OK** button to confirm your selected option (-3, -2, -1, 0, 1, 2, 3).
6. Press the **MENU** button to exit the settings menu without making a selection.

3.2.5 Color Effects

This function sets the color filter effect of an image.

1. In Interval Photo Mode press the **MENU** button.
2. Use the **UP** or **DOWN** buttons to highlight the Camera icon on the left side of the screen.
3. Then press the **RIGHT** button to enter the settings menu.
4. Select '*Color Effects*' using the **UP** or **DOWN** buttons and press the **MODE/OK** button to enter the '*Color Effects*' menu.
5. Use the **UP** or **DOWN** buttons to navigate the menu, and press the **MODE/OK** button to confirm your selected option (*Normal, Black & White, Negative Film, Nostalgia, Red, Green, Blue*).
6. Press the **MENU** button to exit the settings menu without making a selection.

3.2.6 Sharpness

This function adjusts the visible detail of a photograph.

1. In Interval Photo Mode press the **MENU** button.
2. Use the **UP** or **DOWN** buttons to highlight the Interval Photo icon on the left side of the screen.
3. Then press the **RIGHT** button to enter the settings menu.
4. Select '*Sharpness*' using the **UP** or **DOWN** buttons and press the **MODE/OK** button to enter the '*Sharpness*' menu.
5. Use the **UP** or **DOWN** buttons to navigate the menu, and press the **MODE/OK** button to confirm your selected option (*Sharp, Normal, Soft*).
6. Press the **MENU** button to exit the settings menu without making a selection.

3.2.7 Flash

This function allows to change the flash settings.

3. Using the Camera

1. In Interval Photo Mode press the **MENU** button.
2. Use the **UP** or **DOWN** buttons to highlight the Interval Photo icon on the left side of the screen.
3. Then press the **RIGHT** button to enter the settings menu.
4. Select '*Flash*' using the **UP** or **DOWN** buttons and press the **MODE/OK** button to enter the '*Flash*' menu.
5. Use the **UP** or **DOWN** buttons to navigate the menu, and press the **MODE/OK** button to confirm your selected option (*Auto, Off, On*).
6. Press the **MENU** button to exit the settings menu without making a selection.

3.2.8 ISO

This function adjusts the light sensitivity in your photograph.

1. In Interval Photo Mode press the **MENU** button.
2. Use the **UP** or **DOWN** buttons to highlight the Interval Photo icon on the left side of the screen.
3. Then press the **RIGHT** button to enter the settings menu.
4. Select '*ISO*' using the **UP** or **DOWN** buttons and press the **MODE/OK** button to enter the '*ISO*' menu.
5. Press the **UP** or **DOWN** buttons to navigate the menu, and press the **MODE/OK** button to confirm your selected option (*Auto, 100, 200, 400, 800, 1600, 3200, 6400*).
6. Press the **MENU** button to exit the settings menu without making a selection.

3.2.9 Time Stamp

This setting allows you to imprint a date & time onto your captured image files. Once an image file is captured with the imprint, the imprint cannot be removed.

1. In Interval Photo Mode press the **MENU** button.
2. Use the **UP** or **DOWN** buttons to highlight the Interval Photo icon on the left side of the screen.
3. Then press the **RIGHT** button to enter the settings menu.
4. Select '*Time Stamp*' using the **UP** or **DOWN** buttons and press the **MODE/OK** button to turn the time stamp on or off. When On, a check mark will be shown.

3. Using the Camera

3.2.10 Digital Image Stabilizer

This function enables photo capture in high speed and low-light by electronically minimizing motion blur and reducing camera shake.

1. In Interval Photo Mode press the **MENU** button.
2. Use the **UP** or **DOWN** buttons to highlight the Camera icon on the left side of the screen.
3. Then press the **RIGHT** button to enter the settings menu.
4. Select '*Digital Image Stabilizer*' using the **UP** or **DOWN** buttons and press the **MODE/OK** button to turn the feature on or off. When On, a check mark will be shown.

3. Using the Camera

3.3 Photo Burst

In photo burst mode, the camera will take a set number of images with each press of the **SHUTTER** button.

To enter Photo Burst mode, power the camera on and press and hold the **MODE** button. Use the **LEFT** or **RIGHT** buttons to select Photo Burst and press the **MODE/OK** button to enter the Photo Burst Mode.

1. Line up your shot by looking at the LCD screen to see what is in the shot.
2. Hold the camera steady and press the **SHUTTER** button to capture the set number of photos.
3. The number of photos that can be captured at a particular resolution will be displayed in the top right corner of the screen.
4. The number of photos that can be captured will be displayed as 0 on the screen if there is no memory card inserted in the camera's memory card slot.
5. The number of remaining photos is determined by the selected photo resolution. The higher the photo resolution, the lower the number of photos you are able to save to the memory card. Before capturing any photos, you can select a preferred photo resolution.

3.3.1 Photo Resolution

This function sets the photo resolution. The higher the resolution, the greater the photo quality and the larger the file size of the photo.

1. In Photo Burst Mode press the **MENU** button.
2. Use the **UP** or **DOWN** buttons to highlight the Photo Burst icon on the left side of the screen.
3. Then press the **RIGHT** button to enter the settings menu.
4. Select '*Photo Resolution*' using the **UP** or **DOWN** buttons and press the **MODE/OK** button to enter the '*Photo Resolution*' menu.
5. Use the **UP** or **DOWN** buttons to navigate the menu, and press the **MODE/OK** button to confirm your selected resolution (*24MP, 18MP, 12MP*).
6. Press the **MENU** button to exit the settings menu without making a selection.

3. Using the Camera

3.3.2 Photo Burst

This function lets you set the number of photos captured with each photo burst.

1. In Photo Burst Mode press the **MENU** button.
2. Use the **UP** or **DOWN** buttons to highlight the Photo Burst icon on the left side of the screen.
3. Then press the **RIGHT** button to enter the settings menu.
4. Select '*Photo Burst*' using the **UP** or **DOWN** buttons and press the **MODE/OK** button to enter the '*Photo Burst*' menu.
5. Use the **UP** or **DOWN** buttons to navigate the menu, and press the **MODE/OK** button to confirm your selected option (*3-Photo Burst, 5-Photo Burst, 10-Photo Burst*).
6. Press the **MENU** button to exit the settings menu without making a selection.

3.3.3 White Balance

White Balance changes the color of light in your pictures, making it seem warmer or cooler depending on how the light you're shooting in affects the frame.

1. In Photo Burst Mode press the **MENU** button.
2. Use the **UP** or **DOWN** buttons to highlight the Photo Burst icon on the left side of the screen.
3. Then press the **RIGHT** button to enter the settings menu.
4. Select '*White Balance*' using the **UP** or **DOWN** buttons and press the **MODE/OK** button to enter the '*White Balance*' menu.
5. Use the **UP** or **DOWN** buttons to navigate the menu, and press the **MODE/OK** button to confirm your selected option (*Auto, Sunny, Cloudy, Incandescent, Fluorescent*).
6. Press the **MENU** button to exit the settings menu without making a selection.

3.3.4 Exposure

This function adjusts the frame brightness in your photograph.

1. In Photo Burst Mode press the **MENU** button.
2. Use the **UP** or **DOWN** buttons to highlight the Photo Burst icon on the left side of the screen.

3. Using the Camera

3. Then press the **RIGHT** button to enter the settings menu.
4. Select '*Exposure*' using the **UP** or **DOWN** buttons and press the **MODE/OK** button to enter the '*Exposure*' menu.
5. Use the **UP** or **DOWN** buttons to navigate the menu, and press the **MODE/OK** button to confirm your selected option (-3, -2, -1, 0, +1, +2, +3).
6. Press the **MENU** button to exit the settings menu without making a selection.

3.3.5 Color Effects

This function sets the color filter effect of an image.

1. In Photo Burst Mode press the **MENU** button.
2. Use the **UP** or **DOWN** buttons to highlight the Camera icon on the left side of the screen.
3. Then press the **RIGHT** button to enter the settings menu.
4. Select '*Color Effects*' using the **UP** or **DOWN** buttons and press the **MODE/OK** button to enter the '*Color Effects*' menu.
5. Use the **UP** or **DOWN** buttons to navigate the menu, and press the **MODE/OK** button to confirm your selected option (*Normal, Black & White, Negative Film, Nostalgia, Red, Green, Blue*).
6. Press the **MENU** button to exit the settings menu without making a selection.

3.3.6 Sharpness

This function adjusts the visible detail of a photograph.

1. In Photo Burst Mode press the **MENU** button.
2. Use the **UP** or **DOWN** buttons to highlight the Photo Burst icon on the left side of the screen.
3. Then press the **RIGHT** button to enter the settings menu.
4. Select '*Sharpness*' using the **UP** or **DOWN** buttons and press the **MODE/OK** button to enter the '*Sharpness*' menu.
5. Use the **UP** or **DOWN** buttons to navigate the menu, and press the **MODE/OK** button to confirm your selected option (*Sharp, Normal, Soft*).
6. Press the **MENU** button to exit the settings menu without making a selection.

3. Using the Camera

3.3.7 ISO

This function adjusts the light sensitivity in your photograph.

1. In Photo Burst Mode press the **MENU** button.
2. Use the **UP** or **DOWN** buttons to highlight the Photo Burst icon on the left side of the screen.
3. Then press the **RIGHT** button to enter the settings menu.
4. Select '*ISO*' using the **UP** or **DOWN** buttons and press the **MODE/OK** button to enter the '*ISO*' menu.
5. Press the **UP** or **DOWN** buttons to navigate the menu, and press the **MODE/OK** button to confirm your selected option (*Auto, 100, 200, 400, 800, 1600, 3200, 6400*).
6. Press the **MENU** button to exit the settings menu without making a selection.

3.3.8 Time Stamp

This setting allows you to imprint a date & time onto your recorded video files. Once a video file is recorded with the imprint, the imprint cannot be removed.

1. In Photo Burst Mode press the **MENU** button.
2. Use the **UP** or **DOWN** buttons to highlight the Photo Burst icon on the left side of the screen.
3. Then press the **RIGHT** button to enter the settings menu.
4. Select '*Time Stamp*' using the **UP** or **DOWN** buttons and press the **MODE/OK** button to turn the time stamp on or off. When On, a check mark will be shown.

3.3.9 Digital Image Stabilizer

This function enables photo capture in high speed and low-light by electronically minimizing motion blur and reducing camera shake.

1. In Photo Burst Mode press the **MENU** button.
2. Use the **UP** or **DOWN** buttons to highlight the Camera icon on the left side of the screen.
3. Then press the **RIGHT** button to enter the settings menu.
4. Select '*Digital Image Stabilizer*' using the **UP** or **DOWN** buttons and press the **MODE/OK** button to turn the feature on or off. When On, a check mark will be shown.

3. Using the Camera

3.4 Video Recording

To switch to Video mode power the camera on and press and hold the **MODE** button, then using the **LEFT** or **RIGHT** buttons, select Video and press the **MODE/OK** button to enter Video mode. A camcorder icon will appear in the top left corner of the screen when you are in Video mode.

1. Line up your shot by looking at the LCD screen to see what is in view.
2. Hold the camera steady and press the **SHUTTER** button to begin recording.
3. When recording begins, a rolling timer will display at the top right corner of the screen and the LED status light will blink blue. This indicates the recorded video time elapsed.
4. Press the **SHUTTER** button to stop recording.
5. The recorded video files will automatically save onto the inserted memory card.

3.4.1 Video Resolution

This function sets the video resolution. The higher the resolution, the greater the video quality and the larger the file size of the video.

1. In Video Mode press the **MENU** button.
2. Use the **UP** or **DOWN** buttons to highlight the Video icon on the left side of the screen.
3. Then press the **RIGHT** button to enter the settings menu.
4. Select '*Video Resolution*' using the **UP** or **DOWN** buttons and press the **MODE/OK** button to enter the '*Video Resolution*' menu.
5. Use the **UP** or **DOWN** buttons to navigate the menu, and press the **MODE/OK** button to confirm your selected option (*4K (60fps)*, *4K (30fps)*, *2.7K (30fps)*, *1080P (120fps)*, *1080P (60fps)*, *1080P (30fps)*, *720P (60fps)*, *720P (30fps)*).
6. Press the **MENU** button to exit the settings menu without making a selection.

3.4.2 White Balance

White Balance changes the color of light in your pictures, making it seem warmer or cooler depending on how the light you're shooting in affects the frame.

3. Using the Camera

1. In Video Mode press the **MENU** button.
2. Use the **UP** or **DOWN** buttons to highlight the Video icon on the left side of the screen.
3. Then press the **RIGHT** button to enter the settings menu.
4. Select '*White Balance*' using the **UP** or **DOWN** buttons and press the **MODE/OK** button to enter the '*White Balance*' menu.
5. Use the **UP** or **DOWN** buttons to navigate the menu, and press the **MODE/OK** button to confirm your selected option (*Auto, Sunny, Cloudy, Incandescent, Fluorescent*).
6. Press the **MENU** button to exit the settings menu without making a selection.

3.4.3 Exposure

This function adjusts the frame brightness in your photograph.

1. In Video Mode press the **MENU** button.
2. Use the **UP** or **DOWN** buttons to highlight the Video icon on the left side of the screen.
3. Then press the **RIGHT** button to enter the settings menu.
4. Select '*Exposure*' using the **UP** or **DOWN** buttons and press the **MODE/OK** button to enter the '*Exposure*' menu.
5. Use the **UP** or **DOWN** buttons to navigate the menu, and press the **MODE/OK** button to confirm your selected option (-3, -2, -1, 0, 1, 2, 3).
6. Press the **MENU** button to exit the settings menu without making a selection.

3.4.4 Sharpness

This function adjusts the visible detail of a photograph.

1. In Video Mode press the **MENU** button.
2. Use the **UP** or **DOWN** buttons to highlight the Video icon on the left side of the screen.
3. Then press the **RIGHT** button to enter the settings menu.
4. Select '*Sharpness*' using the **UP** or **DOWN** buttons and press the **MODE/OK** button to enter the '*Sharpness*' menu.
5. Use the **UP** or **DOWN** buttons to navigate the menu, and press the **MODE/OK** button to confirm your selected option (*Sharp, Normal, Soft*).
6. Press the **MENU** button to exit the settings menu without making a selection.

3. Using the Camera

3.4.5 Video Quality

The Video Quality function determines the level of compression the camera uses when saving photos to a memory card.

1. In Video Mode press the **MENU** button.
2. Use the **UP** or **DOWN** buttons to highlight the Video icon on the left side of the screen.
3. Then press the **RIGHT** button to enter the settings menu.
4. Select '*Video Quality*' using the **UP** or **DOWN** buttons and press the **MODE/OK** button to enter the '*Video Quality*' menu.
5. Use the **UP** or **DOWN** buttons to navigate the menu, and press the **MODE/OK** button to confirm your selected option (*Super Fine, Fine, Normal*).
6. Press the **MENU** button to exit the settings menu without making a selection.

3.4.6 ISO

This function adjusts the light sensitivity in your photograph.

1. In Video Mode press the **MENU** button.
2. Use the **UP** or **DOWN** buttons to highlight the Video icon on the left side of the screen.
3. Then press the **RIGHT** button to enter the settings menu.
4. Select '*ISO*' using the **UP** or **DOWN** buttons and press the **MODE/OK** button to enter the '*ISO*' menu.
5. Press the **UP** or **DOWN** buttons to navigate the menu, and press the **MODE/OK** button to confirm your selected option (*Auto, 100, 200, 400, 800, 1600, 3200, 6400*).
6. Press the **MENU** button to exit the settings menu without making a selection.

3.4.7 Time Stamp

This setting allows you to imprint a date & time onto your recorded video files. Once a video file is recorded with the imprint, the imprint cannot be removed.

1. In Video Mode press the **MENU** button.
2. Use the **UP** or **DOWN** buttons to highlight the Video icon on the left side of the screen.

3. Using the Camera

3. Then press the **RIGHT** button to enter the settings menu.
4. Select '*Time Stamp*' using the **UP** or **DOWN** buttons and press the **MODE/OK** button to turn the time stamp on or off. When On, a check mark will be shown.

3.4.8 Record Audio

This function allows you to turn audio recording in video and loop recording modes on and off. If this setting is set to off, any videos recorded in video and loop recording modes will not have any audio.

1. In Video Mode press the **MENU** button.
2. Use the **UP** or **DOWN** buttons to highlight the Video icon on the left side of the screen.
3. Then press the **RIGHT** button to enter the settings menu.
4. Select '*Record Audio*' using the **UP** or **DOWN** buttons and press the **MODE/OK** button to turn the time stamp on or off. When On, a check mark will be shown.

3.4.9 Focus Mode

This function allows you to turn the auto focus feature on or off.

1. In Video Mode press the **MENU** button.
2. Use the **UP** or **DOWN** buttons to highlight the Video icon on the left side of the screen.
3. Then press the **RIGHT** button to enter the settings menu.
4. Select '*Focus Mode*' using the **UP** or **DOWN** buttons and press the **MODE/OK** button to enter the '*Focus Mode*' menu.
5. Use the **UP** or **DOWN** buttons to navigate the menu, and press the **MODE/OK** button to confirm your selected option (*Auto Focus, Manual Focus*).
6. When auto focus is selected, your camera will automatically focus on the subject on the LCD screen. When manual focus is selected, half press the **SHUTTER** button to focus the camera on the subject on the LCD screen.
7. Press the **MENU** button to exit the settings menu without making a selection.

3. Using the Camera

3.5 Slow Motion

Videos recorded in slow motion are recorded at a much higher frames per second and when played back, the videos show movement at a much slower rate.

To switch to Slow Motion mode power the camera on and press and hold the **MODE** button, then using the **LEFT** or **RIGHT** buttons, select Slow Motion and press the **MODE/OK** button to enter Slow Motion mode. A camcorder icon will appear in the top left corner of the screen when you are in Slow Motion mode.

1. Line up your shot by looking at the LCD screen to see what is in view.
2. Hold the camera steady and press the **SHUTTER** button to begin recording.
3. When recording begins, a rolling timer will display at the top right corner of the screen and the LED status light will blink blue. This indicates the recorded video time elapsed.
4. Press the **SHUTTER** button to stop recording.
5. The recorded video files will automatically save onto the inserted memory card.

3.5.1 Slow Motion Rate

This function allows you to set the rate that the video is recorded in. If you choose 1080P 4X, your video will playback at $\frac{1}{4}$ speed and if you choose 1080P 2X, then your video will playback at $\frac{1}{2}$ speed.

1. In Slow Motion Mode press the **MENU** button.
2. Use the **UP** or **DOWN** buttons to highlight the Slow Motion Video icon on the left side of the screen.
3. Then press the **RIGHT** button to enter the settings menu.
4. Select '*Slow Motion Rate*' using the **UP** or **DOWN** buttons and press the **MODE/OK** button to enter the '*Slow Motion Rate*' menu.
5. Use the **UP** or **DOWN** buttons to navigate the menu, and press the **MODE/OK** button to confirm your selected option (*1080P 4X*, *1080P 2X*).
6. Press the **MENU** button to exit the settings menu without making a selection.

3. Using the Camera

3.5.2 White Balance

White Balance changes the color of light in your pictures, making it seem warmer or cooler depending on how the light you're shooting in affects the frame.

1. In Slow Motion Mode press the **MENU** button.
2. Use the **UP** or **DOWN** buttons to highlight the Slow Motion Video icon on the left side of the screen.
3. Then press the **RIGHT** button to enter the settings menu.
4. Select '*White Balance*' using the **UP** or **DOWN** buttons and press the **MODE/OK** button to enter the '*White Balance*' menu.
5. Use the **UP** or **DOWN** buttons to navigate the menu, and press the **MODE/OK** button to confirm your selected option (*Auto, Sunny, Cloudy, Incandescent, Fluorescent*).
6. Press the **MENU** button to exit the settings menu without making a selection.

3.5.3 Exposure

This function adjusts the frame brightness in your photograph.

1. In Slow Motion Mode press the **MENU** button.
2. Use the **UP** or **DOWN** buttons to highlight the Slow Motion Video icon on the left side of the screen.
3. Then press the **RIGHT** button to enter the settings menu.
4. Select '*Exposure*' using the **UP** or **DOWN** buttons and press the **MODE/OK** button to enter the '*Exposure*' menu.
5. Use the **UP** or **DOWN** buttons to navigate the menu, and press the **MODE/OK** button to confirm your selected option (-3, -2, -1, 0, 1, 2, 3).
6. Press the **MENU** button to exit the settings menu without making a selection.

3.5.4 Sharpness

This function adjusts the visible detail of a photograph.

1. In Slow Motion Mode press the **MENU** button.
2. Use the **UP** or **DOWN** buttons to highlight the Slow Motion Video icon on the left side of the screen.
3. Then press the **RIGHT** button to enter the settings menu.
4. Select '*Sharpness*' using the **UP** or **DOWN** buttons and press the

3. Using the Camera

MODE/OK button to enter the '*Sharpness*' menu.

5. Use the **UP** or **DOWN** buttons to navigate the menu, and press the **MODE/OK** button to confirm your selected option (*Sharp, Normal, Soft*).
6. Press the **MENU** button to exit the settings menu without making a selection.

3.5.5 Video Quality

The Image Quality function determines the level of compression the camera uses when saving photos to a memory card.

1. In Slow Motion Mode press the **MENU** button.
2. Use the **UP** or **DOWN** buttons to highlight the Slow Motion Video icon on the left side of the screen.
3. Then press the **RIGHT** button to enter the settings menu.
4. Select '*Video Quality*' using the **UP** or **DOWN** buttons and press the **MODE/OK** button to enter the '*Video Quality*' menu.
5. Use the **UP** or **DOWN** buttons to navigate the menu, and press the **MODE/OK** button to confirm your selected option (*Super Fine, Fine, Normal*).
6. Press the **MENU** button to exit the settings menu without making a selection.

3.5.6 Focus Mode

This function allows you to turn the auto focus feature on or off.

1. In Video Mode press the **MENU** button.
2. Use the **UP** or **DOWN** buttons to highlight the Video icon on the left side of the screen.
3. Then press the **RIGHT** button to enter the settings menu.
4. Select '*Focus Mode*' using the **UP** or **DOWN** buttons and press the **MODE/OK** button to enter the '*Focus Mode*' menu.
5. Use the **UP** or **DOWN** buttons to navigate the menu, and press the **MODE/OK** button to confirm your selected option (*Auto Focus, Manual Focus*).
6. When auto focus is selected, your camera will automatically focus on the subject on the LCD screen. When manual focus is selected, half press the **SHUTTER** button to focus the camera on the subject on the LCD screen.
7. Press the **MENU** button to exit the settings menu without making a selection.

3. Using the Camera

3.6 Loop Recording

This function allows you to set a maximum duration for each video clip recorded.

To switch to Loop Recording mode power the camera on and press and hold the **MODE** button, then using the **LEFT** or **RIGHT** buttons, select Loop Recording and press the **MODE/OK** button to enter Loop Recording mode. A camcorder icon will appear in the top left corner of the screen when you are in Loop Recording mode.

1. Line up your shot by looking at the LCD screen to see what is in view.
2. Hold the camera steady and press the **SHUTTER** button to begin recording.
3. When recording begins, a rolling timer will display at the top right corner of the screen and the LED status light will blink blue. This indicates the recorded video time elapsed.
4. Press the **SHUTTER** button to stop recording.
5. The recorded video files will automatically save onto the inserted memory card.

3.6.1 Video Resolution

This function sets the video resolution. The higher the resolution, the greater the video quality and the larger the file size of the video.

1. In Loop Recording Mode press the **MENU** button.
2. Use the **UP** or **DOWN** buttons to highlight the Loop Recording Video icon on the left side of the screen.
3. Then press the **RIGHT** button to enter the settings menu.
4. Select '*Video Resolution*' using the **UP** or **DOWN** buttons and press the **MODE/OK** button to enter the '*Video Resolution*' menu.
5. Use the **UP** or **DOWN** buttons to navigate the menu, and press the **MODE/OK** button to confirm your selected option (*4K (60fps)*, *4K (30fps)*, *2.7K (30fps)*, *1080P (120fps)*, *1080P (60fps)*, *1080P (30fps)*, *720P (60fps)*, *720P (30fps)*).
6. Press the **MENU** button to exit the settings menu without making a selection.

3. Using the Camera

3.6.2 Loop Duration

This function allows you to set a maximum duration for each video clip recorded.

1. In Loop Recording Mode press the **MENU** button.
2. Use the **UP** or **DOWN** buttons to highlight the Loop Recording Video icon on the left side of the screen.
3. Then press the **RIGHT** button to enter the settings menu.
4. Select '*Loop Duration*' using the **UP** or **DOWN** buttons and press the **MODE/OK** button to enter the '*Loop Duration*' menu.
5. Use the **UP** or **DOWN** buttons to navigate the menu, and press the **MODE/OK** button to confirm your selected option (*2 Minutes, 3 Minutes, 5 Minutes*).
6. Press the **MENU** button to exit the settings menu without making a selection.

Once you select an option, your camcorder will record video clips in this duration only. Once this duration is reached, the camcorder will seamlessly end recording and begin recording a new video file.

3.6.3 White Balance

White Balance changes the color of light in your pictures, making it seem warmer or cooler depending on how the light you're shooting in affects the frame.

1. In Loop Recording Mode press the **MENU** button.
2. Use the **UP** or **DOWN** buttons to highlight the Loop Recording Video icon on the left side of the screen.
3. Then press the **RIGHT** button to enter the settings menu.
4. Select '*White Balance*' using the **UP** or **DOWN** buttons and press the **MODE/OK** button to enter the '*White Balance*' menu.
5. Use the **UP** or **DOWN** buttons to navigate the menu, and press the **MODE/OK** button to confirm your selected option (*Auto, Sunny, Cloudy, Incandescent, Fluorescent*).
6. Press the **MENU** button to exit the settings menu without making a selection.

3.6.4 Exposure

This function adjusts the frame brightness in your photograph.

3. Using the Camera

1. In Loop Recording Mode press the **MENU** button.
2. Use the **UP** or **DOWN** buttons to highlight the Loop Recording Video icon on the left side of the screen.
3. Then press the **RIGHT** button to enter the settings menu.
4. Select '*Exposure*' using the **UP** or **DOWN** buttons and press the **MODE/OK** button to enter the '*Exposure*' menu.
5. Use the **UP** or **DOWN** buttons to navigate the menu, and press the **MODE/OK** button to confirm your selected option (-3, -2, -1, 0, 1, 2, 3).
6. Press the **MENU** button to exit the settings menu without making a selection.

3.6.5 Sharpness

This function adjusts the visible detail of a photograph.

1. In Loop Recording Mode press the **MENU** button.
2. Use the **UP** or **DOWN** buttons to highlight the Loop Recording Video icon on the left side of the screen.
3. Then press the **RIGHT** button to enter the settings menu.
4. Select '*Sharpness*' using the **UP** or **DOWN** buttons and press the **MODE/OK** button to enter the '*Sharpness*' menu.
5. Use the **UP** or **DOWN** buttons to navigate the menu, and press the **MODE/OK** button to confirm your selected option (*Sharp, Normal, Soft*).
6. Press the **MENU** button to exit the settings menu without making a selection.

3.6.6 Video Quality

The Image Quality function determines the level of compression the camera uses when saving photos to a memory card.

1. In Loop Recording Mode press the **MENU** button.
2. Use the **UP** or **DOWN** buttons to highlight the Loop Recording Video icon on the left side of the screen.
3. Then press the **RIGHT** button to enter the settings menu.
4. Select '*Video Quality*' using the **UP** or **DOWN** buttons and press the **MODE/OK** button to enter the '*Video Quality*' menu.
5. Use the **UP** or **DOWN** buttons to navigate the menu, and press the **MODE/OK** button to confirm your selected option (*Super Fine, Fine, Normal*).

3. Using the Camera

6. Press the **MENU** button to exit the settings menu without making a selection.

3.6.7 ISO

This function adjusts the light sensitivity in your photograph.

1. In Loop Recording Mode press the **MENU** button.
2. Use the **UP** or **DOWN** buttons to highlight the Loop Recording Video icon on the left side of the screen.
3. Then press the **RIGHT** button to enter the settings menu.
4. Select '*ISO*' using the **UP** or **DOWN** buttons and press the **MODE/OK** button to enter the '*ISO*' menu.
5. Press the **UP** or **DOWN** buttons to navigate the menu, and press the **MODE/OK** button to confirm your selected option (*Auto, 100, 200, 400, 800, 1600, 3200, 6400*).
6. Press the **MENU** button to exit the settings menu without making a selection.

3.6.8 Time Stamp

This setting allows you to imprint a date & time onto your recorded video files. Once a video file is recorded with the imprint, the imprint cannot be removed.

1. In Loop Recording Mode press the **MENU** button.
2. Use the **UP** or **DOWN** buttons to highlight the Loop Recording Video icon on the left side of the screen.
3. Then press the **RIGHT** button to enter the settings menu.
4. Select '*Time Stamp*' using the **UP** or **DOWN** buttons and press the **MODE/OK** button to turn the time stamp on or off. When On, a check mark will be shown.

3.6.9 Record Audio

This function allows you to turn audio recording in video and loop recording modes on and off. If this setting is set to off, any videos recorded in video and loop recording modes will not have any audio.

1. In Loop Recording Mode press the **MENU** button.
2. Use the **UP** or **DOWN** buttons to highlight the Loop Recording Video icon on the left side of the screen.

3. Using the Camera

3. Then press the **RIGHT** button to enter the settings menu.
4. Select '*Record Audio*' using the **UP** or **DOWN** buttons and press the **MODE/OK** button to turn the time stamp on or off. When On, a check mark will be shown.

3.6.10 Focus Mode

This function allows you to turn the auto focus feature on or off.

1. In Video Mode press the **MENU** button.
2. Use the **UP** or **DOWN** buttons to highlight the Video icon on the left side of the screen.
3. Then press the **RIGHT** button to enter the settings menu.
4. Select '*Focus Mode*' using the **UP** or **DOWN** buttons and press the **MODE/OK** button to enter the '*Focus Mode*' menu.
5. Use the **UP** or **DOWN** buttons to navigate the menu, and press the **MODE/OK** button to confirm your selected option (*Auto Focus*, *Manual Focus*).
6. When auto focus is selected, your camera will automatically focus on the subject on the LCD screen. When manual focus is selected, half press the **SHUTTER** button to focus the camera on the subject on the LCD screen.
7. Press the **MENU** button to exit the settings menu without making a selection.

3. Using the Camera

3.7 Time Lapse

This feature allows you to capture long sequences of events in a much shorter time period.

To switch to Time Lapse mode power the camera on and press and hold the **MODE** button, then using the **LEFT** or **RIGHT** buttons, select Time Lapse and press the **MODE/OK** button to enter Time Lapse mode. A camcorder icon will appear in the top left corner of the screen when you are in Time Lapse mode.

1. Line up your shot by looking at the LCD screen to see what is in view.
2. Hold the camera steady and press the **SHUTTER** button to begin recording.
3. When recording begins, a rolling timer will display at the top right corner of the screen and the LED status light will blink blue. This indicates the recorded video time elapsed.
4. Press the **SHUTTER** button to stop recording.
5. The recorded video files will automatically save onto the inserted memory card.

3.7.1 Video Resolution

This function sets the video resolution. The higher the resolution, the greater the video quality and the larger the file size of the video.

1. In Time Lapse Mode press the **MENU** button.
2. Use the **UP** or **DOWN** buttons to highlight the Time Lapse Video icon on the left side of the screen.
3. Then press the **RIGHT** button to enter the settings menu.
4. Select '*Video Resolution*' using the **UP** or **DOWN** buttons and press the **MODE/OK** button to enter the '*Video Resolution*' menu.
5. Use the **UP** or **DOWN** buttons to navigate the menu, and press the **MODE/OK** button to confirm your selected option (*4K, 2.7K, 1080P, 720P*).
6. Press the **MENU** button to exit the settings menu without making a selection.

3.7.2 Interval Duration

This function allows you to set the amount of time in between images.

3. Using the Camera

1. In Time Lapse Mode press the **MENU** button.
2. Use the **UP** or **DOWN** buttons to highlight the Time Lapse Video icon on the left side of the screen.
3. Then press the **RIGHT** button to enter the settings menu.
4. Select '*Interval Duration*' using the **UP** or **DOWN** buttons and press the **MODE/OK** button to enter the '*Interval Duration*' menu.
5. Use the **UP** or **DOWN** buttons to navigate the menu, and press the **MODE/OK** button to confirm your selected option (*0.5 Seconds, 1 Second, 2 Seconds, 5 Seconds, 10 Seconds, 30 Seconds, 60 Seconds*).
6. Press the **MENU** button to exit the settings menu without making a selection.

NOTE: By selecting '*10 Seconds*' the camera will capture a single frame every 10 seconds and create a video combining all of the captured images. See the table below for how long it will take to record 1 second of video for each option;

Interval Duration Option	Length of time to record 1 second of video
0.5 Seconds	15 Seconds
1 Second	30 Seconds
2 Seconds	60 Seconds
5 Seconds	150 Seconds
10 Seconds	300 Seconds
30 Seconds	900 Seconds
60 Seconds	1,800 Seconds

3.7.3 White Balance

White Balance changes the color of light in your pictures, making it seem warmer or cooler depending on how the light you're shooting in affects the frame.

1. In Time Lapse Mode press the **MENU** button.
2. Use the **UP** or **DOWN** buttons to highlight the Time Lapse Video icon on the left side of the screen.
3. Then press the **RIGHT** button to enter the settings menu.
4. Select '*White Balance*' using the **UP** or **DOWN** buttons and press the **MODE/OK** button to enter the '*White Balance*' **MENU**.

3. Using the Camera

5. Use the **UP** or **DOWN** buttons to navigate the menu, and press the **MODE/OK** button to confirm your selected option (*Auto, Sunny, Cloudy, Incandescent, Fluorescent*).
6. Press the **MENU** button to exit the settings menu without making a selection.

3.7.4 Exposure

This function adjusts the frame brightness in your photograph.

1. In Time Lapse Mode press the **MENU** button.
2. Use the **UP** or **DOWN** buttons to highlight the Time Lapse Video icon on the left side of the screen.
3. Then press the **RIGHT** button to enter the settings menu.
4. Select '*Exposure*' using the **UP** or **DOWN** buttons and press the **MODE/OK** button to enter the '*Exposure*' menu.
5. Use the **UP** or **DOWN** buttons to navigate the menu, and press the **MODE/OK** button to confirm your selected option (*-3, -2, -1, 0, 1, 2, 3*).
6. Press the **MENU** button to exit the settings menu without making a selection.

3.7.5 Video Duration

This function allows you to set the length of the final time lapse video.

1. In Time Lapse Mode press the **MENU** button.
2. Use the **UP** or **DOWN** buttons to highlight the Time Lapse Video icon on the left side of the screen.
3. Then press the **RIGHT** button to enter the settings menu.
4. Select '*Video Duration*' using the **UP** or **DOWN** buttons and press the **MODE/OK** button to enter the '*Video Duration*' menu.
5. Use the **UP** or **DOWN** buttons to navigate the menu, and press the **MODE/OK** button to confirm your selected option (*Unlimited, 6 Seconds, 8 Seconds, 10 Seconds, 20 Seconds, 30 Seconds, 60 Seconds, 120 Seconds*).
6. Press the **MENU** button to exit the settings menu without making a selection.

NOTE: By selecting '*10 Seconds*' the time lapse will automatically stop recording when the final video is 10 seconds long. The actual length of time that it will take to record the 10 second video will depend on the interval duration, see section 3.7.2.

3. Using the Camera

3.7.6 Sharpness

This function adjusts the visible detail of a photograph.

1. In Time Lapse Mode press the **MENU** button.
2. Use the **UP** or **DOWN** buttons to highlight the Time Lapse Video icon on the left side of the screen.
3. Then press the **RIGHT** button to enter the settings menu.
4. Select '*Sharpness*' using the **UP** or **DOWN** buttons and press the **MODE/OK** button to enter the '*Sharpness*' menu.
5. Use the **UP** or **DOWN** buttons to navigate the menu, and press the **MODE/OK** button to confirm your selected option (*Sharp, Normal, Soft*).
6. Press the **MENU** button to exit the settings menu without making a selection.

3.7.7 Video Quality

The Image Quality function determines the level of compression the camera uses when saving photos to a memory card.

1. In Time Lapse Mode press the **MENU** button.
2. Use the **UP** or **DOWN** buttons to highlight the Time Lapse Video icon on the left side of the screen.
3. Then press the **RIGHT** button to enter the settings menu.
4. Select '*Video Quality*' using the **UP** or **DOWN** buttons and press the **MODE/OK** button to enter the '*Video Quality*' menu.
5. Use the **UP** or **DOWN** buttons to navigate the menu, and press the **MODE/OK** button to confirm your selected option (*Super Fine, Fine, Normal*).
6. Press the **MENU** button to exit the settings menu without making a selection.

3.7.8 ISO

This function adjusts the light sensitivity in your photograph.

1. In Time Lapse Mode press the **MENU** button.
2. Select '*ISO*' using the **UP** or **DOWN** buttons and press the **MODE/OK** button to enter the '*ISO*' menu.
3. Press the **UP** or **DOWN** buttons to navigate the menu, and press the **MODE/OK** button to confirm your selected option (*Auto, 100, 200, 400, 800, 1600, 3200, 6400*).
4. Press the **MENU** button to exit the settings menu without making a selection.

3. Using the Camera

3.4.9 Focus Mode

This function allows you to turn the auto focus feature on or off.

1. In Video Mode press the **MENU** button.
2. Use the **UP** or **DOWN** buttons to highlight the Video icon on the left side of the screen.
3. Then press the **RIGHT** button to enter the settings menu.
4. Select '*Focus Mode*' using the **UP** or **DOWN** buttons and press the **MODE/OK** button to enter the '*Focus Mode*' menu.
5. Use the **UP** or **DOWN** buttons to navigate the menu, and press the **MODE/OK** button to confirm your selected option (*Auto Focus*, *Manual Focus*).
6. When auto focus is selected, your camera will automatically focus on the subject on the LCD screen. When manual focus is selected, half press the **SHUTTER** button to focus the camera on the subject on the LCD screen.
7. Press the **MENU** button to exit the settings menu without making a selection.

3. Using the Camera

3.8 Playback Mode

Videos and photos captured on your camera can be easily played back.

1. In all Photo and Video modes, press the **RIGHT/PLAYBACK** button to enter Playback mode, previously recorded videos and captured images will show on the screen.
2. Press the **LEFT** or **RIGHT** buttons to cycle through the captured videos and photos stored on the memory card.
3. While viewing a recorded video, press the **SHUTTER** button to start the video, press the **SHUTTER** button again to stop the video.
4. Press the **ZOOM OUT** button to view 6 files on the screen at once.
5. Use the **UP**, **DOWN**, **LEFT** or **RIGHT** buttons to navigate the files.
6. Press the **ZOOM IN** button to view the highlighted file.
7. While viewing an image, press and hold the **ZOOM IN** button to zoom in on the image. Then use the **UP**, **DOWN**, **LEFT** or **RIGHT** buttons to move the image on the screen. Press and hold the **ZOOM OUT** button to zoom out of the image.
8. Press the **DOWN/DELETE** button to access the delete menu.
9. Press the **LEFT** or **RIGHT** buttons to navigate the Delete menu, and press the **MODE/OK** button to confirm your selected option (*Confirm*, *Cancel*).
10. Press the **MENU** button to exit the settings menu without making a selection.

NOTE: There is no way to recover deleted media. Once you delete a single file or all files, they are permanently deleted.

3. Using the Camera

3.9 Settings Menu

The Settings Menu can be accessed while in any Photo or Video mode. From the main screen, press the **MENU** button, then press the **DOWN** button. The menu will move down and switch tabs from the current mode's icon to the Settings menu.

*NOTE: The settings menu cannot be accessed while the camcorder is recording a video file. If the camcorder is recording a file, you must stop recording before the settings menu can be accessed. To stop recording at any time, press the **SHUTTER** button.*

3.9.1 Frequency

This function sets the frequency of the camera from 50Hz to 60Hz. Please check the frequency of your location and set accordingly.

1. In all Photo and Video Modes press the **MENU** button.
2. Press the **DOWN** button to enter the settings mode.
3. Then press the **RIGHT** button to enter the settings menu.
4. Select 'Frequency' using the **UP** or **DOWN** buttons and press the **MODE/OK** button to enter the 'Frequency' menu.
5. Press the **UP** or **DOWN** buttons to navigate the menu, and press the **MODE/OK** button to confirm your selected option (*Auto, 50 Hz, 60 Hz*) the default frequency for the United States is 60Hz.
6. Press the **MENU** button to exit the settings menu without making a selection.

3.9.2 LED Indicator

This function allows you turn the LED status indicator on the camera, on or off.

1. In all Photo and Video Modes press the **MENU** button.
2. Press the **DOWN** button to enter the settings mode.
3. Then press the **RIGHT** button to enter the settings menu.
4. Select 'LED Indicator' using the **UP** or **DOWN** buttons and press the **MODE/OK** button to activate the LED Indicator. A checkmark indicates the feature is activated.

3. Using the Camera

3.9.3 Screen Saver

This function sets the duration of time in which the camcorder will wait with no user input before automatically turning off the LCD screen. Note: even while the screen is off, the camera will still be powered on.

1. In all Photo and Video Modes press the **MENU** button.
2. Press the **DOWN** button to enter the settings mode.
3. Then press the **RIGHT** button to enter the settings menu.
4. Select '*Screen Saver*' using the **UP** or **DOWN** buttons and press the **MODE/OK** button to enter the '*Screen Saver*' menu.
5. Press the **UP** or **DOWN** buttons to navigate the menu, and press the **MODE/OK** button to confirm your selected option (*Off, 30 Seconds, 1 Minute, 2 Minutes, 10 Minutes*).
6. Press the **MENU** button to exit the settings menu without making a selection.

3.9.4 Auto Power Off

This function sets the duration of time in which the camcorder will wait with no user input before automatically powering off.

1. In all Photo and Video Modes press the **MENU** button.
2. Press the **DOWN** button to enter the settings mode.
3. Then press the **RIGHT** button to enter the settings menu.
4. Select '*Auto Power Off*' using the **UP** or **DOWN** buttons and press the **MODE/OK** button to enter the '*Auto Power Off*' menu.
5. Press the **UP** or **DOWN** buttons to navigate the menu, and press the **MODE/OK** button to confirm your selected option (*Off, 3 Minutes, 5 Minutes, 10 Minutes*).
6. Press the **MENU** button to exit the settings menu without making a selection.

3.9.5 Button Sound

This function allows you to turn off the sounds of the camera.

1. In all Photo and Video Modes press the **MENU** button.
2. Press the **DOWN** button to enter the settings mode.
3. Then press the **RIGHT** button to enter the settings menu.
4. Select '*Button Sound*' using the **UP** or **DOWN** buttons and press the **OK** button to enter the '*Button Sound*' menu.

3. Using the Camera

5. Press the **UP** or **DOWN** buttons to navigate the menu, and press the OK button to confirm your selected option (*Off, On*).
6. Press the **MENU** button to exit the settings menu without making a selection.

3.9.6 Language

This function allows you to set the camera's interface language.

1. In all Photo and Video Modes press the **MENU** button.
2. Press the **DOWN** button to enter the settings mode.
3. Then press the **RIGHT** button to enter the settings menu.
4. Select '*Language*' using the **UP** or **DOWN** buttons and press the **MODE/OK** button to enter the '*Language*' menu.
5. Press the **UP** or **DOWN** buttons to navigate the menu, and press the **MODE/OK** button to confirm your selected language.
6. Press the **MENU** button to exit the settings menu without making a selection.

3.9.7 Date Format

This function allows you to set the current Date and Time on your recorded video clips and captured photos.

1. In all Photo and Video Modes press the **MENU** button.
2. Press the **DOWN** button to enter the settings mode.
3. Then press the **RIGHT** button to enter the settings menu.
4. Select '*Date Format*' using the **UP** or **DOWN** buttons and press the **MODE/OK** button to enter the '*Date Format*' menu.
5. Press the **UP** or **DOWN** buttons to navigate the menu, and press the **MODE/OK** button to confirm your selected option (*YYYY/MM/DD, MM/DD/YYYY, DD/MM/YYYY*).
6. Press the **MENU** button to exit the settings menu without making a selection.

3.9.8 Date & Time Set

This function allows you to set the current date and time on your camera.

1. In all Photo and Video Modes press the **MENU** button.
2. Press the **DOWN** button to enter the settings mode.
3. Then press the **RIGHT** button to enter the settings menu.

3. Using the Camera

4. Select '*Date & Time Set*' using the **UP** or **DOWN** buttons and press the **MODE/OK** button to enter the '*Date & Time Set*' menu.
5. Press the **UP** or **DOWN** buttons to change the value of the highlighted field.
6. Press the **LEFT** or **RIGHT** buttons to change to the next field.
7. Press the **MODE/OK** button to save the time and to exit the settings menu.

3.9.9 Format Memory Card

The format setting erases all photos, videos and data stored on your memory card.

1. In all Photo and Video Modes press the **MENU** button.
2. Press the **DOWN** button to enter the settings mode.
3. Then press the **RIGHT** button to enter the settings menu.
4. Select '*Format Memory Card*' using the **UP** or **DOWN** buttons and press the **MODE/OK** button to enter the '*Format Memory Card*' menu.
5. Press the **LEFT** or **RIGHT** buttons to navigate the menu, and press the **MODE/OK** button to confirm your selected option (*Format, Cancel*).
6. Press the **MENU** button to exit the settings menu without making a selection.

NOTE: This will delete all of your media and cannot be undone.

3.9.10 Device Info

This setting displays the current firmware version of your camera.

1. In all Photo and Video Modes press the **MENU** button.
2. Press the **DOWN** button to enter the settings mode.
3. Then press the **RIGHT** button to enter the settings menu.
4. Select '*Device Info*' using the **UP** or **DOWN** buttons and press the **OK** button to enter the '*Device Info*' menu. The camera information will now be displayed on the screen.
5. Press the **MODE/OK** button to exit the Device Info menu.

3.9.11 Restore Default Settings

Factory default settings can be restored in this menu. This function will not delete the media stored on the memory card, and will only restore all of the

3. Using the Camera

menu's setting back to factory default settings.

1. In all Photo and Video Modes press the **MENU** button.
2. Press the **DOWN** button to enter the settings mode.
3. Then press the **RIGHT** button to enter the settings menu.
4. Select '*Restore Default Settings*' using the **UP** or **DOWN** buttons and press the **MODE/OK** button to enter the '*Restore Default Settings*' menu.
5. Press the **LEFT** or **RIGHT** buttons to navigate the menu, and press the **MODE/OK** button to confirm your selected option (*Confirm, Cancel*).
6. Press the **MENU** button to exit the settings menu without making a selection.

4. Technical Specifications

4. Technical Specifications

Multifunction Power Rechargeable Tripod:

Model Number: MND60V-PWTPD

- USB 5V / 2A Output
- 3.7V 2,500mAh Battery
- 1/4-20 Screw Mount
- 135° Tilting Head Adjustment
- 360° Rotating Head Adjustment
- Reinforced 3-Leg Anti-Slip Design
- Collapsible to Single-Hand Use
- Double Slotted for Accessory Arms
- 4.4 lbs. Maximum Load

Removable Remote Control

- Model Number: MNCD60-RC
- Battery: 3.0V CR2032



LED Video Light:

Model Number: MND60V-VLED

- 3000k ~ 5500k Adjustable Temperature
- 60° Illumination Angle
- 20 ft. Illumination Distance
- 800 Lumens Adjustable Brightness
- 3 Accessory Shoe-Mount Slots
- 1,200mAh Battery / USB Rechargeable



4. Technical Specifications

4. Technical Specifications

Stereo Microphone:

Model Number: MND60-STMIC

- NCR Noise Reduction
- Rabbit Fur Windscreen
- 3.5mm Male Stereo Output
- -45dB \pm 3dB Sensitivity
- 20dB \pm 2dB Sensitivity Enhancement
- 50Hz - 16kHz Frequency Response
- 200 Ω \pm 30% Output Impedance
- 24dB-A Equivalent Noise Level
- Omni-Directional Pattern
- 1x AAA 1.5V Powered



Wide Angle + Macro Lens:

Model Number: MND60-WAL52

- 0.45X Wide Angle
- 52mm Mount Diameter
- 62mm Front Diameter Threading
- Detachable Macro Ring
- 13 ~ 20mm Focal Length
- 94° ~ 120° Angle of View
- 0.1m Minimum Focusing Distance



4. Technical Specifications

Model Number	Minolta MND60V
Lens	Auto Focus • f=3.95mm • F/1.8 • 52mm Front Threading for Lens Accessory Attachments
Zoom	16X Digital Zoom
Image Sensor	12MP CMOS Sensor
Shutter	Electronic • Digital Stabilization
Pixels (photo)	JPEG: 64 MP • 56 MP • 48 MP • 40 MP • 30 MP • 24 MP • 18 MP • 12 MP
Pixels (video)	MP4: 4K 60FPS • 4K 30FPS • 2.7K 30FPS • 1080P 120FPS • 1080P 60FPS • 1080P 30FPS • 720P 60FPS • 720P 30FPS
ISO Sensitivity	Auto • 100 • 200 • 400 • 800 • 1600 • 3200 • 6400
LCD Screen	3.0" Tilting 16:9 IPS LCD HD
Assistive Light	White LED Flash
Power Saving Mode	OFF • 3 Minutes • 5 Minutes • 10 Minutes
White Balance Control	Auto • Sunny • Cloudy • Incandescent • Florescent
Special Features	Slow Motion • Loop Recording • Time Lapse • Photo Burst • Interval Photo • Self Timer • Color Filter Effect • Macro • PC Webcam Mode
Recording Media	MicroSD • MicroSDXC; Maximum: 128GB
I/O Ports	USB-C • External Microphone Port (3.5mm) • Microphone (built-in MIC) • Speaker
Power	Lithium-Ion 3.8V, 1,300mAh, 4.94Wh
Dimensions	4.89 x 2.7 x 1.75 in. • 8.7 oz.



*Minolta is a registered trademark of JMM Lee Properties, LLC
and is used in the United States by Elite Brands Inc. under license.*

*40 Wall Street, 61st Floor, New York, NY 10005 USA • Tel: 800-441-1100
www.minoltadigital.com • www.elitebrands.com
Copyright © 2023 Elite Brands Inc.*

***If you're having difficulties with your camera, or would like further assistance,
please call our toll-free technical support hotline at 800-441-1100. Please be
sure to have your camera handy when calling.***





MINOLTA[®]
MND60V

VLOG