

The Data

Persons killed by police in WA State
2015 - 2021

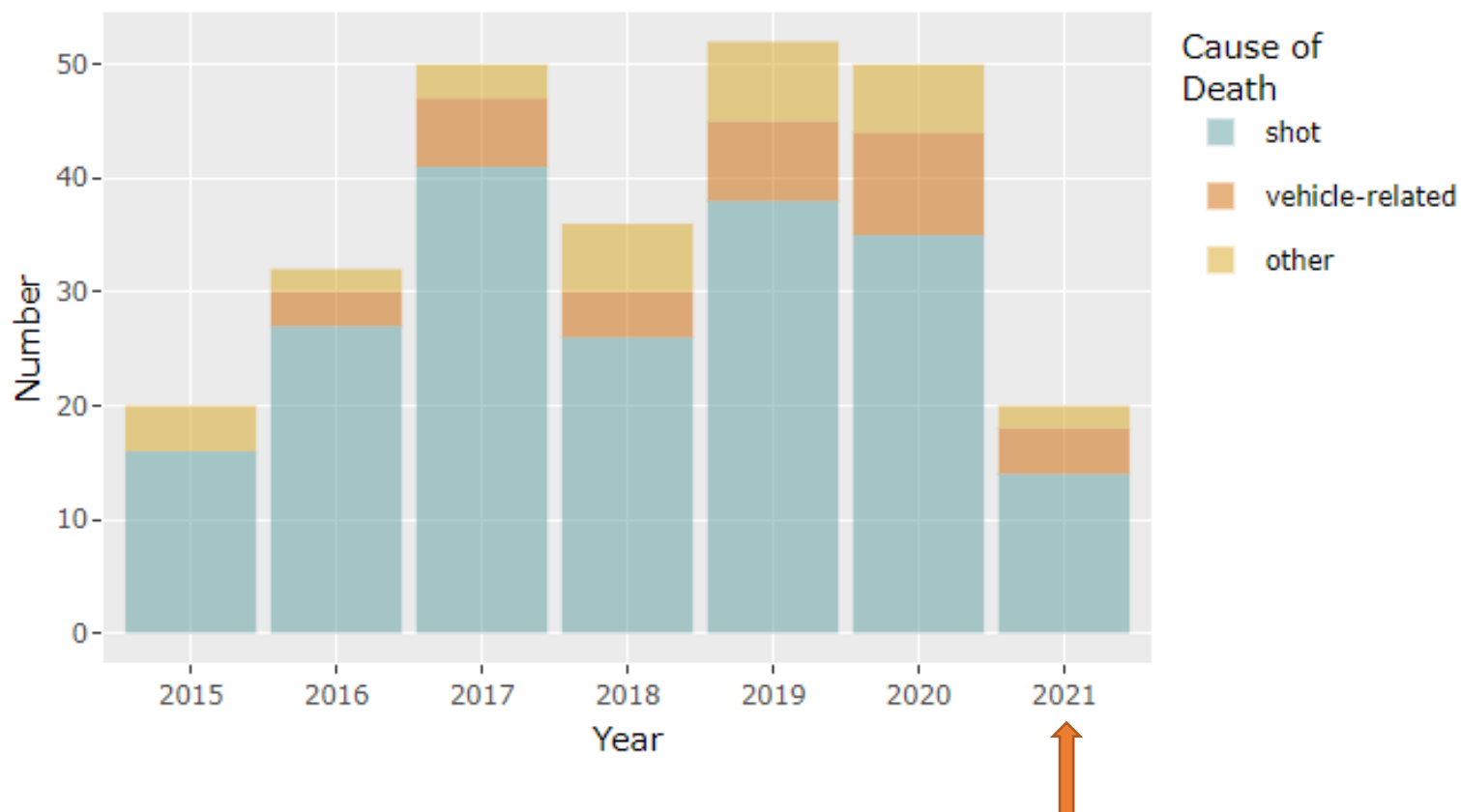
I want you to remember 2 numbers from 2021

60%

#1

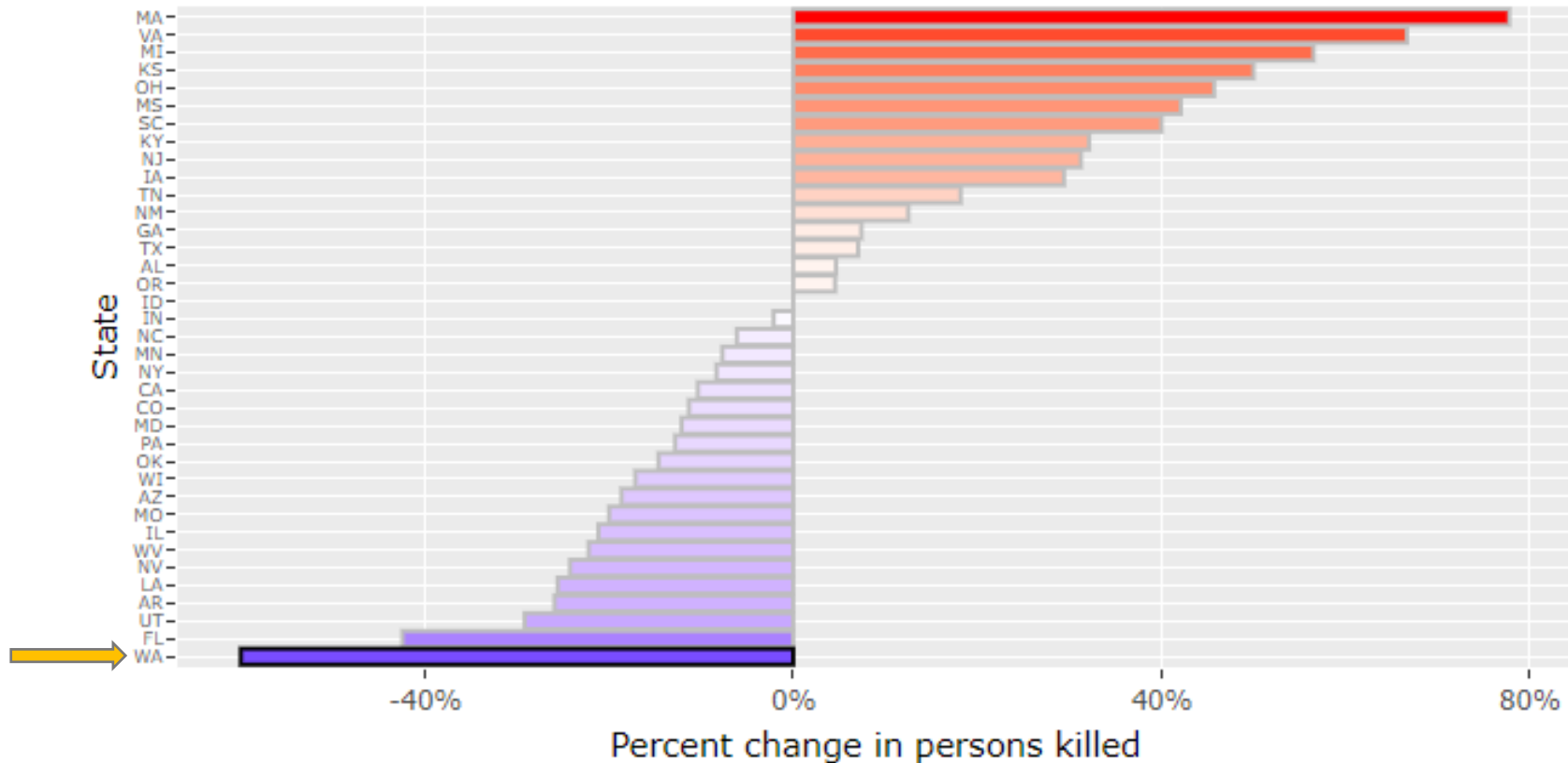
60% : That's the decline in persons killed in 2021

Persons killed by police: 2015 - 2021



#1 : Rank of WA in reduction in persons killed

State ranking: % Change from 2020 to 2021 in persons killed by police



Includes states with an average of 10 or more persons killed annually

For the full list of states see https://rpubs.com/moxbox/wa_since2015

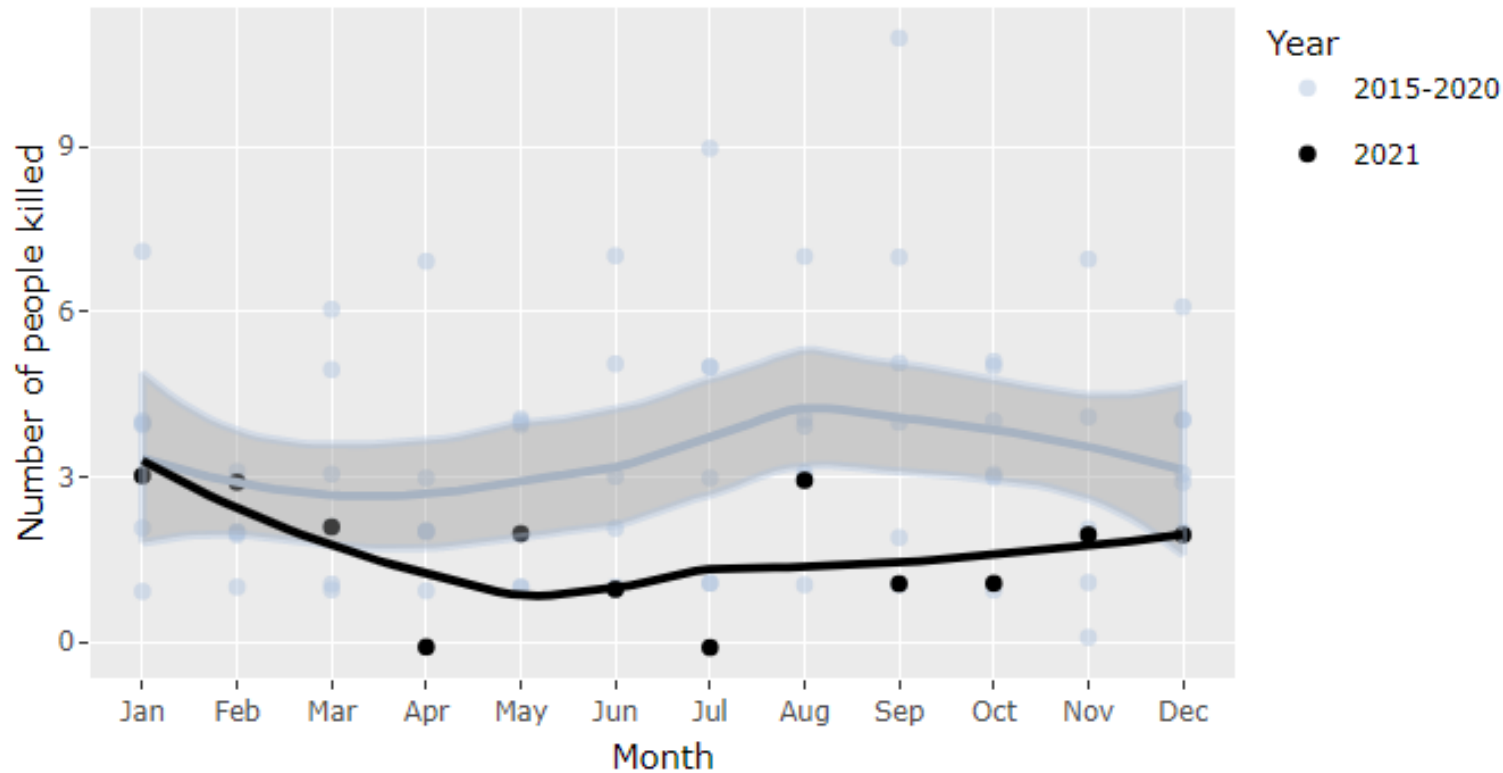
Now, how do we interpret these numbers?

- Typical year to year variation?
- Part of a nationwide trend?
- Linked with a concomitant rise in violent crimes?
- Can we say the legislation is responsible for this?

... Let's look at each of these in turn

Is this just typical year to year variation?

WA since 2015: Monthly totals with moving average

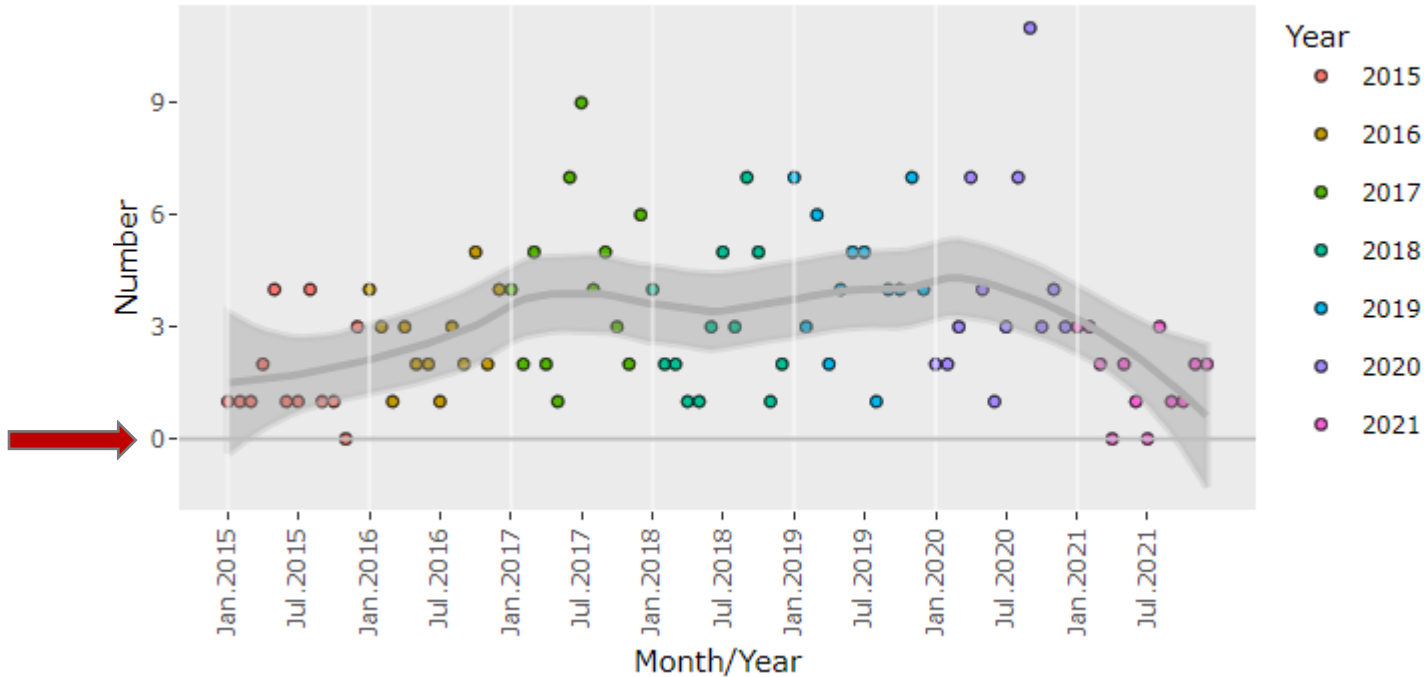


No:

The trend in 2021 (black line) fell below what you would expect from normal year to year variation (grey band)

Zero months

Monthly fatalities: Jan 2015 - Dec 2021



Have to go back to 2015 to find the last time that happened.

Only happened 3 times in the last 6 years, 2 of these in 2021

Is this a national trend?

Persons killed by police in FE: WA vs. all other states

Year	All Other States	WA
2015	1466	20
2016	1340	32
2017	1476	50
2018	1587	36
2019	1522	52
2020	1754	50
2021	1713	20
Pct change 2020 to 2021	-2	-60

No:

In the rest of the US, some states increased, others decreased.

Overall, the total number killed in 2021 was stable

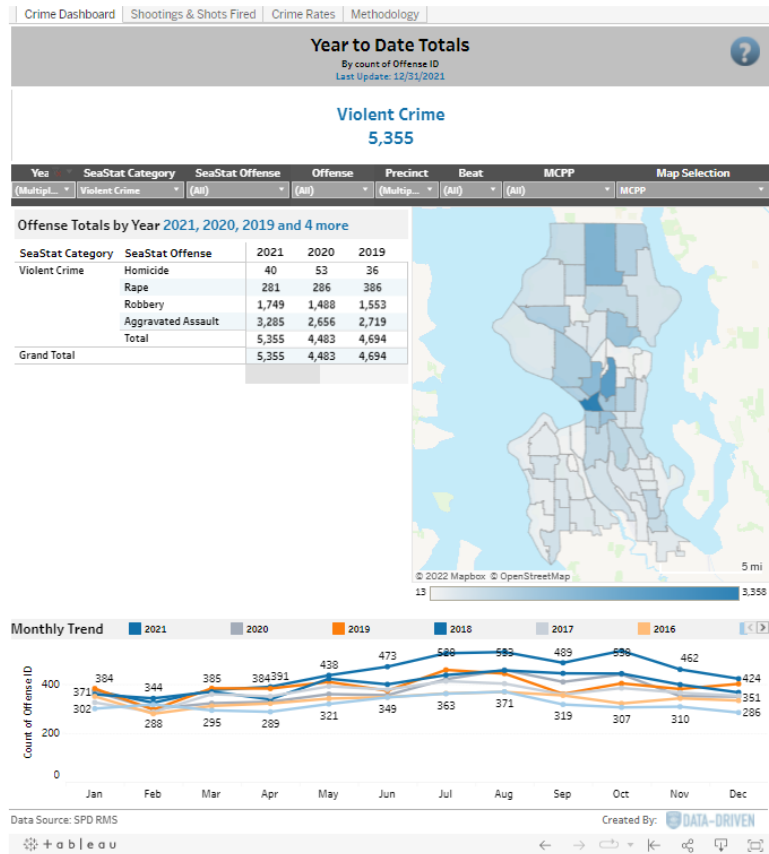
What about violent crime? Did it increase?

- We don't know for WA State as a whole
- Because the numbers have not yet been released
- But let's look at Seattle and King Co
 - Because they make their data publicly available in a timely way
 - And this is the single largest city and county in the state (in terms of population)

Seattle violent crime offenses

<http://www.seattle.gov/police/information-and-data/crime-dashboard>

Crime Dashboard



2015 - 2021

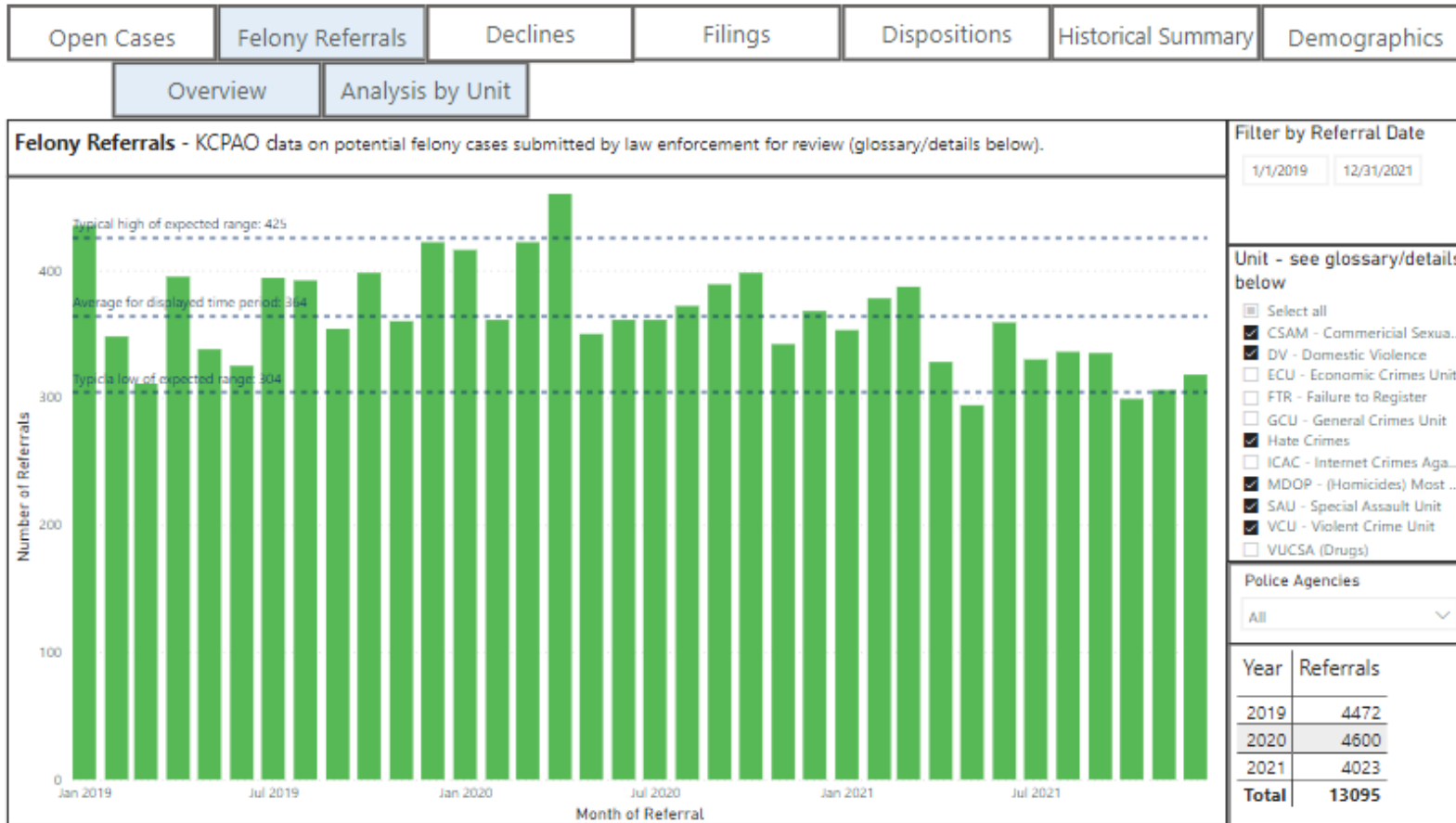
Small ~ 15% overall increase in 2021

- With conflicting patterns:
 - a decrease in homicide and rape,
 - but an increase in robbery and assault

And similar increases are showing up around the US

- Not just WA

King County: violent crime felony referrals



2019 - 2021

~13% decrease overall in 2021

- Decreases in all categories
- Including a 20% decrease in homicides

2021 levels are at “typical low” range

Can we say the legislation is responsible?

- Not for sure
- But we can say
 - The decline in persons killed by police not just typical year to year variation
 - And it is not a national trend
 - And there has not been a clear increase in violent crime in the largest city and county of this state

You can find all of this in an online report

- I update it weekly (though the data sometimes lag farther behind)

https://rpubs.com/moxbox/wa_since2015