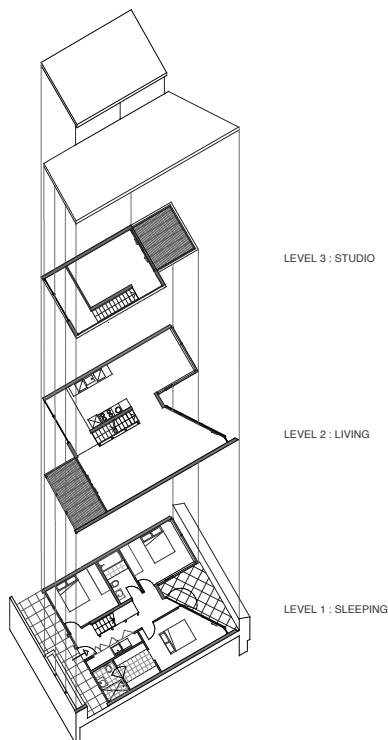


282 Wakefield St

Wellington



brief  
Rooftop apartments

client  
Systems Support Ltd.

architects  
James Fenton and Chris Kelly,  
Architecture Workshop

“We decided to play with mass—to crown the heavyweight base with a lightweight top. The building was a strong frame with unusually large windows. So we took the size of the windows to an extreme, and made the apartments almost all glass.”

- James Fenton, quoted in *Dwell* magazine

