



WILLAMETTE
VALLEY WINE

— CELEBRATING 40 YEARS —

Pinot Noir
Pommard '74
↔

WILLAMETTE

the pinot noir auction

EXCLUSIVELY

2022 PINOT NOIR & CHARDONNAY

UNIQUELY OREGON



TABLE OF CONTENTS

AUCTION INDEX	page 2	WILLAMETTE VALLEY AVA MAP & DETAILS	9
SPONSORS	4-5	TERMS OF SALE	10-11
ABOUT THE WILLAMETTE VALLEY	9	AUCTION LOTS	12

willamettewines.auction
@wvwiner @wvauction #wvauction



GRETCHEN BOOCK
 BENTON-LANE WINERY
2024 AUCTION CHAIR

Dear Friends,

Welcome to the eighth annual Willamette: The Pinot Noir Auction. The days ahead will bring beautiful wine, great food and the very best that the Oregon wine community has to offer. On behalf of the 76 participating wineries and the Willamette Valley Wineries Association, I want to thank you for your excitement and support.

This year, the Auction features 71 Pinot noirs and 10 Chardonnays from the special 2022 vintage. Eight of these lots are collaborations made with friendship and creativity among two winemakers.

More than fifty years ago, the founders of the Oregon wine industry were convinced that the Willamette Valley's unique climate, soils and geography would one day make it one of the most important Pinot noir producing regions in the world. They quickly realized that their success could only be built by sharing with each other everything they learned through hard experiences and careful observations from each new vintage. Their cooperation and collaboration remain engrained in every aspect of this shared endeavor, and their spirit of camaraderie permeates our community to this day. We welcome you as a part of this special community during the Auction festivities.

Here at our Auction you will find the very wines that tell our story: great wines from great terroirs, unique small blocks, single barrels, and small blends—the best wines in our cellars.

Thank you for raising a glass, a paddle, and important funds for the Willamette Valley. The following pages lay out the details of more than 80 delicious wines, and we can't wait to share them with you.

Happy Bidding at the Auction!

Gretchen

WINERIES | * **Bold indicates Chardonnay lots.**

Adelsheim Vineyard	79	The Four Graces	40	R. Stuart & Co. Winery	36
Adelsheim Vineyard & Alexana Estate	57	Fullerton Wines	6	Raptor Ridge Winery	47
Alexana Estate	70	Fullerton Wines	61	Redhawk Vineyard & Winery	5
Antica Terra	73	GC Wines	26	Ridgecrest	29
Archery Summit	69	GC Wines	62	ROCO	54
Archery Summit & Resonance	14	Gran Moraine	53	Roots Wine Co.	49
Argyle Winery	67	Harper Voit	43	Roots Wine Co.	65
Benton-Lane	1	Hazelfern	48	Ruby Vineyard & Winery	10
Bethel Heights	76	Hyland Estates Winery	68	Shea Wine Cellars	50
Bethel Heights and Lingua Franca	58	Iris Vineyards	19	Sokol Blosser	56
Björnson Vineyard	34	J. Christopher	45	Soléna Estate	80
BledsoelMcDaniels	51	King Estate Winery	39	Soléna Estate & Domaine Divio	59
Broadley Vineyards	37	Lachini Vineyards	20	Stoller Family Estate	75
Bryn Mawr Vineyards	64	Landlines Estates	35	Sweet Cheeks	16
Coeur de Terre Vineyard	33	Lange Estate Winery & Vineyards	46	Torii Mor Winery	22
Cooper Mountain Vineyards	18	Left Coast Estate	8	Trisaetum	44
Cristom Vineyards	63	Lemelson Vineyards	17	Van Duzer Vineyard	23
David Paige Wines	41	Lingua Franca	81	Violet Vines	2
Dobbes Family Estate & Atticus	13	Lundeen	7	Walter Scott Wines	66
Domaine Divio	28	Maison Noir Wines	32	Westmount	31
Domaine Roy & fils	27	Martin Woods & Holocene	12	Wetzel Estate	38
Domaine Serene	77	Martin Woods	60	White Rose Estate	30
Drouhin Oregon Roserock	55	Nysa	24	WillaKenzie Estate	42
Durant Vineyards	4	Penner-Ash Wine Cellars	74	Willamette Valley Vineyards	21
Élevée Winegrowers	3	Penner-Ash Wine Cellars & Dusky Goose	11	Winderlea	52
Elk Cove Vineyards	72	Prince Hill Vineyards	78	Winter's Hill Estate	9
Et Fille Wines & Sokol Blosser Winery	15	Purple Hands Winery	25	Zena Crown Vineyard	71

AUCTION LOTS | All listings offered as 5 case lots (60 bottles) unless indicated.

1 Benton-Lane	28	Domaine Divio	55	Drouhin Oregon Roserock
2 Violet Vines	29	Ridgecrest	56	Sokol Blosser
3 Élevée Winegrowers	30	White Rose Estate	57	Adelsheim Vineyard & Alexana Estate
4 Durant Vineyards	31	Westmount - <u>20 case lot</u>	58	Bethel Heights and Lingua Franca
5 Redhawk Vineyard & Winery	32	Maison Noir Wines - <u>20 case lot</u>	59	Soléna Estate & Domaine Divio
6 Fullerton Wines	33	Coeur de Terre Vineyard	60	Martin Woods
7 Lundeen	34	Björnson Vineyard	61	Fullerton Wines
8 Left Coast Estate	35	Landlines Estates	62	GC Wines
9 Winter's Hill Estate	36	R. Stuart & Co. Winery	63	Cristom Vineyards
10 Ruby Vineyard & Winery	37	Broadley Vineyards	64	Bryn Mawr Vineyards
11 Penner-Ash Wine Cellars & Dusky Goose	38	Wetzel Estate	65	Roots Wine Co.
12 Martin Woods & Holocene	39	King Estate Winery	66	Walter Scott Wines
13 Dobbes Family Estate & Atticus	40	The Four Graces	67	Argyle Winery
14 Archery Summit & Resonance	41	David Paige Wines	68	Hyland Estates Winery
15 Et Fille Wines & Sokol Blosser Winery - <u>10 case lot</u>	42	WillaKenzie Estate	69	Archery Summit
16 Sweet Cheeks	43	Harper Voit	70	Alexana Estate
17 Lemelson Vineyards	44	Trisaetum	71	Zena Crown Vineyard
18 Cooper Mountain Vineyards	45	J. Christopher	72	Elk Cove Vineyards
19 Iris Vineyards	46	Lange Estate Winery & Vineyards	73	Antica Terra
20 Lachini Vineyards	47	Raptor Ridge Winery	74	Penner-Ash Wine Cellars
21 Willamette Valley Vineyards	48	Hazelfern	75	Stoller Family Estate
22 Torii Mor Winery	49	Roots Wine Co.	76	Bethel Heights
23 Van Duzer Vineyard	50	Shea Wine Cellars	77	Domaine Serene
24 Nysa	51	BledsoelMcDaniels	78	Prince Hill Vineyards
25 Purple Hands Winery	52	Winderlea	79	Adelsheim Vineyard
26 GC Wines	53	Gran Moraine	80	Soléna Estate
27 Domaine Roy & fils	54	ROCO	81	Lingua Franca

CHARDONNAY LOTS

IMPERIAL SPONSORS



WINEBOW

FINE WINE + SPIRITS

NORTH WEST
DISTRIBUTION & STORAGE

WINECO
— CONSUMER DIRECT —

30
LOCALLY OWNED & OPERATED
1994-2024



Constellation
Brands

JEROBOAM SPONSOR

TRICORBRAUN
WinePak.

MAGNUM SPONSORS



STOLLER
WINE GROUP
ESTABLISHED 1993



wineshipping

WINE DIRECT



SUPPORTERS



*Seminar Lunch Sponsor



WINEBOW

FINE WINE + SPIRITS



A Proud Supporter of Willamette Valley Wines

Winebow has been distributing fine wine and spirits for more than 40 years. With a distribution network in 18 markets that cover 60% of the wine consumption in the U.S., Winebow strives to be the best partner to its customers and suppliers, and to inspire a passion for the wines of the Willamette Valley.

*Your Go-To Distributor for
Wines from the Upper Left*



  @winebow

Northwest Distribution & Storage WineCo LLC - NWDS Logistics

STORAGE

- Secure, licensed & bonded
- 500,000 square feet of storage space
- Temperature controlled

TRANSPORTATION

- Company owned fleet drivers
- Refrigerated trailers
- Bulk wine tankers

FULLFILLMENT SERVICES

- DTC – club run & daily shipments
- High-touch customer service
- Labeling, repack & special projects

LOGISTICS

- Distributor consolidation
- Extensive partner carrier network
- Wide range of shipping capabilities



www.nwdist.com

503-362-2212 | 503-399-0514

LOCALLY OWNED AND OPERATED SINCE 1994

**WE HAVE BEEN
PROUD TO SUPPORT
THE OREGON WINE
INDUSTRY FOR THE
PAST 30 YEARS
AND LOOKING
FORWARD TO THE
NEXT 30 VINTAGES
AND BEYOND**



TRICORBRAUN
WinePak.

SUSTAINABLE WINE PACKAGING

**WE OFFER 400 GRAM
AND 467 GRAM
BOTTLE OPTIONS!**

Contact us today to learn more.

TricorBraun WinePak has the strategic foresight and local supply to keep you one step ahead.

Visit tricorbraunwinepak.com to view our selection of ready-to-ship inventory, or call **1-800-DRINKWINE** to get in touch with our experts.



OREGON'S WILLAMETTE VALLEY

The Willamette Valley's geographic area is between Oregon's Cascade Mountains and Coast Range Mountains, more than 100 miles long and spanning 60 miles at its widest point—3,438,000 acres in total.

DISTANCE TO THE PACIFIC OCEAN
50 miles, McMinnville to Lincoln City

MAJOR CITIES & POPULATIONS

Portland	639,863
Salem	161,637
Eugene	160,561
Corvallis	54,953
McMinnville	33,393
Newberg	22,692

ABOUT THE WILLAMETTE VALLEY

FIRST PINOT NOIR PLANTING - 1965
David Lett, The Eyrie Vineyards

VINEYARDS	877
ACRES PLANTED	25,452
WINERIES	676
PLANTED VINEYARD ACREAGE	68%*
WINE PRODUCTION	70%*
PINOT NOIR PRODUCTION	83%*

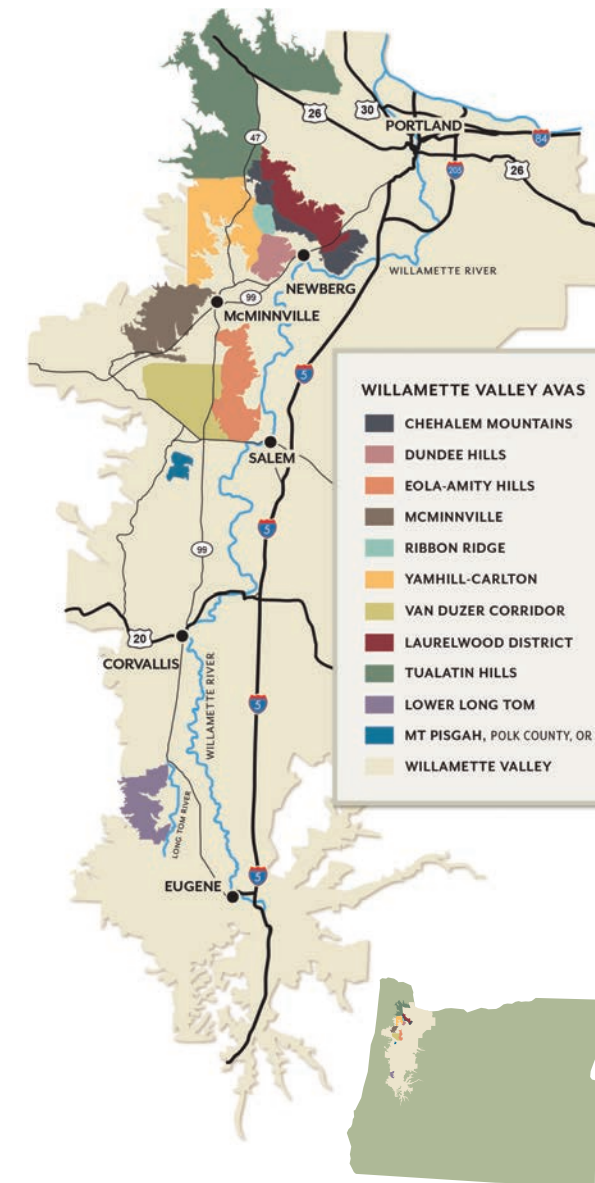
*% of overall Oregon Production

AMERICAN VITICULTURAL AREAS

<i>Chehalem Mountains AVA</i>	EST 2006
<i>Dundee Hills AVA</i>	EST 2005
<i>Eola-Amity Hills AVA</i>	EST 2006
<i>Laurelwood District AVA</i>	EST 2020
<i>Lower Long Tom AVA</i>	EST 2021
<i>McMinnville AVA</i>	EST 2005
<i>Mt. Pisgah, Polk County, OR AVA</i>	EST 2022
<i>Ribbon Ridge AVA</i>	EST 2005
<i>Tualatin Hills AVA</i>	EST 2020
<i>Van Duzer Corridor AVA</i>	EST 2019
<i>Willamette Valley AVA</i>	EST 1983
<i>Yamhill-Carlton AVA</i>	EST 2005

MAJOR SOILS

<i>Marine Sedimentary</i>	Willakenzie
<i>Volcanic (Basalt)</i>	Jory, Nekia
<i>Windblown Loess (Silts)</i>	Laurelwood



TERMS & CONDITIONS OF SALE 2024

These Terms and Conditions of Sale (the “Auction Terms”), and the documents identified herein, constitute the entire terms and conditions with respect to the sale and purchase of wines made available during the Willamette Valley Wineries Association (“WVWA”) The Pinot Noir Auction (the “Auction”). No agent, representative, or employee of WVWA shall have the right to waive or modify any of the Auction Terms set forth herein unless such person is an authorized representative of WVWA. By bidding, whether personally or through a proxy, the bidder agrees to be bound by these Auction Terms. WVWA reserves the right to amend these Auction Terms at any time via addendum or via oral announcements by a WVWA authorized representative during the Auction.

Only licensed members of the trade, their guests, and guests of WVWA, each of whom must be registered in advance, will be allowed admission to the Auction or participate in the Auction. All bidders must be licensed members of the wine trade who have registered as a bidder and received a numbered paddle. The WVWA will provide bidder contact information to Zachys Wine Auctions, Inc. which will operate the sale.

All statements of any nature, whether written or oral, by auctioneer, WVWA, or producing winery about any aspect of the auctioned wines are merely statements of opinion and do not in any way constitute a warranty or representation, either express or implied, concerning the quality of the wine or any other aspect of the wine. Such statements are not to be relied upon by bidders as warranties or representations of fact. Prospective bidders, by so bidding, acknowledge that they have inspected the wines to their satisfaction and bid only on the basis of their own inspection, evaluation and opinion of the wine being sold. All wine is sold “as is” and without any warranty whatsoever, whether express or implied, including, but not limited to, warranties of merchantability or fitness for a particular purpose.

The highest bidder for each wine when the bidding is closed, as determined by the auctioneer, will be recorded as the purchaser of the wine. WVWA will be

the seller and retains sole discretion as to when and how to release the wine for delivery to the purchaser. Purchaser has no right to assign or otherwise transfer the right to take possession of the wine to any other party without first obtaining permission of WVWA, who may grant or withhold permission in its sole discretion.

Bids will be accepted only from registered bidders or a bidder’s designated agent and may only be made by numbered paddle issued by WVWA to that bidder. All bidders shall identify the individual(s) that may bid on behalf of the bidder. Such designation shall be made in writing and must be submitted to WVWA no less than 7 days before the date of the Auction. WVWA may rely on the authority of the designated agent(s) to act on behalf of bidder, and bidder shall hold WVWA harmless from any action taken by the designated bidder.

WVWA and the auctioneer shall have the right to reject any bid at any time prior to the fall of the hammer. No bid shall be valid unless acknowledged by the auctioneer. Should a dispute arise between bidders or should the auctioneer doubt the validity of any bid the auctioneer shall have the sole and absolute right to resolve the dispute, re-offer, or withdraw the lot in question.

At the fall of the hammer, the bidder identified by the auctioneer shall be deemed to have purchased the wine and thereupon assumes full risk and responsibility thereof. WVWA shall have the absolute right to withhold release and delivery of the wine to purchaser until purchaser has paid in full. Purchaser’s sole remedy for non-delivery of the wine shall be limited to obtaining a refund of the purchase price.

Bidders and purchasers agree that the sale and delivery of wines via the Auction shall not affect the rights of the producing winery to sell their own wines to any distributor of their choosing or direct to consumers in bidder’s/purchaser’s state or the right of producing winery to sell wines to any purchaser in said state. Bidder/purchaser agrees to take whatever steps are necessary to protect the rights of the producing winery outlined in this paragraph, including but not limited to the relinquishment of any rights which bidder/purchaser may have under state law. Any offer or sale, as well

as any action or proceeding, related to or in connection with the Auction shall be governed by and interpreted under the laws of the State of Oregon. Any offer or sale of wine related to or in connection with the Auction is subject to the provisions of the Oregon Liquor Control Act and Federal Alcohol Administration Act and are offered and sold subject to the provisions of those laws.

ONLINE AUCTIONS

In the event the Auction is conducted wholly or partially online, the Auction will be held subject to the terms and conditions of the host of the online Auction; provided, however, that these Auction Terms control the relationship between WVWA and bidders in the event of any conflicting term of the online Auction host. By participating in the online Auction, bidders agree to be bound by the terms and conditions and other published policies of the online Auction host.

PROXY BIDDING

WVWA may permit a registered bidder to request that a representative of WVWA bid on bidder’s behalf at the Auction. Such appointment shall be made in writing on a form provided by WVWA, and must be submitted to WVWA no less than 7 days before the date of the Auction.

PAYMENT & COLLECTION

Purchaser will submit full payment for all purchases directly to WVWA for each wine upon receipt of invoice. Only one payment per lot is permitted. All bidders must submit credit card information to permit WVWA to charge the bidder’s credit card for wine purchased in accordance with these terms and conditions. By bidding, Purchaser agrees that WVWA may charge purchaser’s credit card for the full amount of the wine for which purchaser was the awarded bidder. Any amount not paid within 30 days of invoice will accrue interest at 1.5% per month. Purchaser authorizes WVWA to charge purchasers credit card for any payment not made within 30 days of invoice.

DELIVERY

All wine is sold FOB the location of the winery that produced the lot purchased. WVWA is not responsible for shipping wine. Shipping or

delivery arrangements, expenses and insurance are the sole responsibility of the purchaser. Any shipment of wines out-of-state is the responsibility of the purchaser, who is solely responsible for compliance with the laws and regulations of said state.

MEDIA COVERAGE

As a condition of participating in the Auction, participant permits WVWA to reproduce, adapt, display, publish and distribute, in any and all media whether now known or yet to be developed, any video, photograph, or image taken or recorded of the participant at the Auction, participant’s name, voice, likeness, city or state of residence, and any other information regarding his/her participation in the Auction, and releases WVWA from any liability therefrom.



OPENING PINOT NOIR LOTS | #1 - 10

As is our tradition, the Auction opens with a lot from the 2024 Auction Chair:

Gretchen Boock from Benton-Lane Winery, Lot #1.

From all corners of the Willamette Valley, these wines represent the best in our cellars from the 2022 vintage. Each lot is crafted specially for this auction, hand-numbered, and signed by the winemaker.



BENTON-LANE

LOT #1 | 60 BOTTLES (5 CASES)

2022 PINOT NOIR | *The Transcendence*

THE WINE. *Noun. Rising or extending notably beyond ordinary limits.*

The Transcendence embodies Benton-Lane vineyard's incredible vitality. Our 317-acre estate is planted with 140 acres of vines, spanning a 500-foot elevation gain and one mile from bottom to top. On April 14, 2022, the lower half of the vineyard suffered a severe frost, and the primary buds were completely lost. Miraculously, these vines still had the energy deep in their reserves to push a second set of buds which yielded spectacular wines that transcended our expectations. This wine is from Block V, located in the most eastern portion of the estate. Six years ago, we identified Block V as unique due to its deep and well-drained Willakenzie soil, creating a wine with full, structured mouthfeel and balanced textures. Now six years later, we are awestruck with the distinctive flavor profile and texture of this wine and believe that the terroir and our organic farming method has allowed this block to truly stand out.

The wine opens with sour cherries, freeze-dried raspberries and subtle floral aromas of violet and lavender. It unfolds into mineral notes of graphite and wet stone along with baking spice. The wine shows silky refined tannins with bright acidity. It evolves revealing layers of complexity creating an elegant and nuanced wine. Aged in 100% French oak barrels for 12 months, 22% of which were new.

THE WINERY. *Established in 1988, Benton-Lane was born from the spirit of rugged individualism and relentless exploration. Benton-Lane is a 317-acre estate in southern Willamette Valley, planted on a historic sheep ranch and cloaked by thousands of forested acres. The 140-acre vineyard offers a mix of sedimentary and volcanic soils that provide a diverse opportunity for terroir expression, producing Pinot noir with complexity and nuance. Benton-Lane remains forwardly focused on stewardship, sustainability, and crafting exceptional Pinot noir of the utmost quality.*

BENTON-LANE.COM

@BENTONLANEWINERY

BENTON-LANE

AVA

Lower Long Tom, Willamette Valley

WINEMAKER

Amael Orrego

VINEYARD

Benton-Lane Vineyard

BLOCK

V2

CLONE

777

SOIL TYPE

Willakenzie (Marine Sedimentary)

ALCOHOL

13.0%

BOTTLING

August 2, 2023

HARVEST

October 5, 2022 - October 7, 2022



VIOLET VINES



LOT #2 | 60 BOTTLES {5 CASES}

2022 PINOT NOIR | *Taylor + Two*

THE WINE. *This wine is the perfect expression of the fruit and terroir from our estate vineyard in the foothills of the Coast Range, in the McMinnville AVA. Dry-farmed diverse soils, warm days, cool nights and constant breezes deliver complex wines with layered fruit and a seemingly never-ending finish. This wine, aged in 30% new French oak, is sourced from our oldest three Pinot noir blocks (Clones 777, 115 and Pommard) named after our three boys – and we named this wine after our oldest son whose name has not yet made it to a label until now.*

THE WINERY. *Violet Vines produces exquisite, terroir-driven Oregon-grown still and sparkling wines. The natural beauty of Oregon and our love of the wine-growing region led to the creation of Violet Vines in 2019. Our 88-acre estate vineyard property is nestled in the coast range foothills in Sheridan, Oregon, within the McMinnville AVA. Our newest addition is a five-acre property, the Set in Stone Vineyard, in the Rocks District of the Milton-Freewater AVA. Today, we produce Pinot noir and Chardonnay, and we are excited to deliver exceptional Syrah, Grenache, Mourvedre, Cabernet Franc, Chenin Blanc and Albariño in 2024.*

VIOLETVINES.COM

@VIOLETVINESWINE

AVA
McMinnville, Willamette Valley

WINEMAKER
Brian Zawada

VINEYARD
Violet Vines Estate Vineyard

BLOCKS
Taylor, Andrew and Cooper Blocks

CLONES
777, 115 and Pommard

SOIL TYPES
Jory and Marine Sedimentary Soils

ALCOHOL
14.0%

BOTTLING
December 6, 2023

HARVEST
October 20, 2022

ÉLEVÉE WINEGROWERS



LOT #3 | 60 BOTTLES {5 CASES}

2022 PINOT NOIR | *Elevation*

THE WINE. *It was a love of the mountains that originally lured us to the Pacific Northwest in the early 90s, where we explored the Cascades by foot and ski and our love affair with Pinot noir began. Following professional winemaking pursuits that took us to Burgundy and beyond, we returned to the Pacific Northwest and began working with vineyards within a narrow elevation band spanning 450-800ft, prompting our name Élevée, French for elevated. To celebrate those elevated peaks that originally lured us and the elevated slopes we now farm, we present our 2022 “Elevation”, a special blend composed from these elevated sites.*

THE WINERY. *Élevée Winegrowers is a “Study in Terroir”, focused on uncovering the most exciting and dramatic Expressions of Pinot noir, that we believe are found by identifying the most exciting and dramatic Environments in which to grow them. After years of professionally crafting wines for others in Burgundy and elsewhere, we founded Élevée in 2008 when Archery Summit’s Gary Andrus decided to sell us a special 1998 planting in the Dundee Hills. Named “Élevée” for our elevated vineyards that lie within a narrow band spanning 450-800ft, all our sites are LIVE Certified Sustainable, dry-farmed, full cover, no-till, with no herbicide use.*

ELEVEEWINES.COM

@ELEVEEWINES

AVA
Willamette Valley

WINEMAKER
Tom Fitzpatrick

CLONES
Pommard, Dijon 777

SOIL TYPES
Jory, Nekia, Yamhill, and Laurelwood

ALCOHOL
13.9%

BOTTLING
August 4, 2023

HARVEST
October 8, 2022 - October 19, 2022



DURANT VINEYARDS

LOT #4 | 60 BOTTLES {5 CASES}

2022 PINOT NOIR | *Little House*

THE WINE. From the crest of the ridgeline, we find our most shallow Jory soil on the property. There sits our little pump house. The vines nestled around the 'Little House' consistently produce wines that have the densest tannins on the property, along with beautiful expressions of fresh blue, black and red fruit. This block always lends itself to some of our favorite Pinot noir off our property.

THE WINERY. Durant is a way of life that keeps us connected to and rooted in the landscape of the West. Every day we strive to create experiences that inspire and delight. Our products are crafted to enhance your lifestyle through connections to history, place and the future. As stewards of the land, we strive to nurture and protect the land that is our legacy.

DURANTOREGON.COM

@DURANT_OREGON



AVA
Dundee Hills, Willamette Valley

WINEMAKER
Spencer Spetnagel

VINEYARD
Durant Vineyards

BLOCKS
La Casita / Southside

CLONES
114 / 115

SOIL TYPE
Jory

ALCOHOL
13.0%

BOTTLING
February 15, 2024

HARVEST
October 4, 2022 - October 5, 2022

REDHAWK VINEYARD & WINERY

LOT #5 | 60 BOTTLES {5 CASES}

2022 PINOT NOIR | *Eola-Amity Cuvée*

THE WINE. Our Auction cuveé is once again a blend of Pommard from our estate (70%) and Zenith Vineyard (30%). Our estate component comes from the Pataccoli Family Vineyard, planted in 1978 and own-rooted. The Zenith block comes from 25-year-old-vines on rootstock. This is the fifth year we have blended these two blocks for our Auction cuveé. Typically, these are single-vineyard bottlings. The wine highlights the dark fruit typical of the Eola-Amity Hills and has structure and tannin that suggest aging potential. The two vineyards are roughly five miles apart on the eastern side of the AVA.

THE WINERY. Redhawk Winery was established in 1988 with the first vineyard planting in 1978. John & Betty Pataccoli purchased the winery and vineyard in the summer of 2005, and immediately began a major remodel of the property. Now, after 18+ years of upgrades and improvements to both the infrastructure and health of the vineyard, the changes are evident in the quality of our wines. Our fun and informal tasting room, coupled with the ever-changing view of the mountains and the Valley, has created a gathering place for all wine lovers.

REDHAWKWINE.COM

@REDHAWKVINEYARDANDWINERY



AVA
Eola-Amity Hills, Willamette Valley

WINEMAKER
John Pataccoli

CLONE
Pommard

ALCOHOL
13.8%

BOTTLING
January 30, 2024

HARVEST
October 11, 2022 - October 14, 2022

FULLERTON WINES



LOT #6 | 60 BOTTLES {5 CASES}

2022 PINOT NOIR | *Planet of the Grapes*

THE WINE. *Planet of the Grapes Pinot Noir takes you on a voyage through the three main soil types in the Willamette Valley: volcanic, marine sedimentary, and windblown loess. Harkening to one of the main themes in the book “Planet of the Apes”, this wine was made in harmony with nature, shunning over-reliance on technology. Fermented with ambient yeast and approximately 1/3 whole cluster. Explore the Willamette as if it were a planet, the Planet of the Grapes.*

THE WINERY. *Fullerton Wines explores the rich and varied AVAs of Oregon by expressing the distinct personality of each vineyard and vintage in the bottle. Founded in the Fullerton family garage in 2011, the winery is a deeply personal family collaboration. The winemaking operation is now based in Corvallis, with a small estate vineyard in Beaverton, and a tasting room in Portland. Producing mainly Willamette Valley Pinot noir and Chardonnay, the family also works with different grape varieties from some of Oregon’s other cherished viticultural areas.*

FULLERTONWINES.COM

@FULLERTONWINES

AVA
Willamette Valley

WINEMAKER
Alex Fullerton

VINEYARDS
Bjornson Vineyard (33.4%)
Fir Crest Vineyard (33.3%)
Nemarniki Vineyard (33.3%)

CLONES
115, 777, Pommard

SOIL TYPES
Volcanic, marine sedimentary, and loess

ALCOHOL
13.0%

BOTTLING
March 25, 2024

HARVEST
October 8, 2022 - October 16, 2022

LUNDEEN



LOT #7 | 60 BOTTLES {5 CASES}

2022 PINOT NOIR | *Full Circle*

THE WINE. *The “AHA!” wine that made me fall in love with Pinot noir and began my winemaking journey 25 years ago was a beautiful 1998 from the Dundee Hills. I am now honored and inspired to have crafted this elegant, layered, and expressive Pinot noir with with superb fruit, expertly grown by George Hillberry in the incomparable Jory soil of La Colina Vineyard in the Dundee Hills.*

THE WINERY. *Third-generation Oregonian Michael Lundeen’s journey to discover his calling to craft fine wines was one of coming home. At the turn of the 21st Century, Michael returned to his family’s ancestral Yamhill County farm where he and his father Gerald then planted the first Pinot noir vines at their Poverty Bend Vineyard. Michael’s original artistic vision of naturally handcrafting expressive and elegant wines the Willamette Valley has grown into a 20+ year career now entering its most exciting phase. Lundeen is now farming 15+ acres with its own team utilizing Organic practices, and hand-crafting wines from distinctive Pinot noirs to graceful and elegant Sparkling Wines.*

LUNDEENWINES.COM

@LUNDEEN_WINES

AVA
Dundee Hills, Willamette Valley

WINEMAKER
Michael Lundeen

VINEYARD
La Colina

BLOCK
6b

CLONE
115

SOIL TYPE
Jory

ALCOHOL
13.4%

BOTTLING
August 25, 2023

HARVEST
October 20, 2022



LEFT COAST ESTATE



LOT #8 | 60 BOTTLES {5 CASES}

2022 PINOT NOIR | *Ensemble*

THE WINE. *Left Coast's 2022 vintage shows wonderful depth, richness, balance and complexity across the board. Our trio of vineyard-designated blocks is especially sharply focused and powerful. Willamette: The Pinot Noir Auction has prompted us for the first time to create a blend of impeccable proportions from these three elements and create a generous, seamless wine that greatly expresses our unique setting in the Willamette Valley.*

THE WINERY. *Left Coast Estate is a sustainable winery, vineyard, and working farm. At our heart, we are stewards of the land.*

Left Coast is guided by two defining principles: a passion for making world-class wine from all estate fruit and a deep connection to the land where we live and farm. Each bottle is crafted to represent the unique terroir of our 490-acre estate. Our focus on terroir aligns with sustainable farming practices to preserve the integrity of our land for future generations.

LEFTCOASTWINE.COM

@LEFTCOASTWINE



WINTER'S HILL ESTATE



LOT #9 | 60 BOTTLES {5 CASES}

2022 PINOT NOIR | *The Hartland*

THE WINE. *From the Hart of our vineyard. From the Hart of the Dundee Hills. From the Hart of Oregon. The Gladhart Family is honored to present the 2022 Hartland. Growing just a short tractor ride from the winery, our Pinot noir is hand-picked at the peak of ripeness.*

Each block of the vineyard is kept separate during fermentation and barrel aging to express its unique characteristics of soil, slope and clonal selection. Each vintage, a few blocks stand out from the others for their intensity, balance and complexity. We select a few barrels from those blocks to create the Single Block Series, our most sought-after wines. We selected yet again from those wines to create the Hartland.

THE WINERY. *Winter's Hill Estate was established in 1990 in the Dundee Hills. All of our wines are grown, produced, and bottled on our 100-acre estate of vineyards and oak savanna.*

The Gladhart family owns and operates Winter's Hill: tending our vines, making our wines, and greeting you in the winery when you come to visit. Winemaker Russell Gladhart studied and worked in vineyards in Oregon, France, and New Zealand before joining Winter's Hill full time in 2004. Winter's Hill wines are distributed in select markets, and enjoyed by our Cellar Door Club members across the country.

WINTERSHILLWINE.COM

@WINTERSHILLWINE



AVA
Van Duzer Corridor, Willamette Valley

WINEMAKER
Joe Wright

VINEYARD
Left Coast Estate Vineyard

CLONES
Pommard, Wädensville, 115

SOIL TYPE
Marine Sedimentary (Chehulpum)

ALCOHOL
13.0%

BOTTLING
May 1, 2024

HARVEST
October 12, 2022 - October 15, 2022

AVA
Dundee Hills, Willamette Valley

WINEMAKER
Russell Gladhart

SOIL TYPE
Jory

ALCOHOL
13.0%

BOTTLING
January 24, 2024

HARVEST
October 17, 2022

RUBY VINEYARD AND WINERY



LOT #10 | 60 BOTTLES {5 CASES}

2022 PINOT NOIR | *Only in Dreams*

THE WINE. *Our 2022 Only in Dreams Pinot Noir is sourced from our own-rooted Old Vine Estate. We love the blending table. Nearly every year we find ourselves tasting a version of our Estate that is 33% of each of clone. If only we had more old-vine Wädensvil! We are happy to share with you an expression of our estate that exists Only in Dreams. Block 1 was planted in 1973 with Wädensvil Clone 1a sourced from the Eyrie South Block. This half acre produces our most prized wine, yet it only yields two to three barrels a year that are bottled separately as our Flora's Reserve. The remaining 6.75 acres of vinifera-rooted Pommard and Dijon 115, both planted in 1979, is the source of our Old Vine Estate Pinot Noir. Enjoy!*

THE WINERY. *Ruby Vineyard is family-owned and operated winery and vineyard located in the Laurelwood District in Willamette Valley's Chehalem Mountains AVA. Our 7.25 acres of Pinot noir at Ruby Vineyard are own-rooted vines and some of the oldest in Oregon, planted in 1973 & 1979. The remaining 1.8 acres are planted to Chardonnay and Pinot. The vineyard's fortuitous placement on a narrow band of Laurelwood soils adds depth and spice to their premium old vine Pinot noir, while the sourcing of grapes from neighboring vineyards ensures the production of Pinot, Gamay, Chardonnay, an Alsatian blend, and sparkling wines.*

RUBYVINEYARD.COM

@RUBYVINEYARD

AVA

Laurelwood District, Willamette Valley

WINEMAKER

Andrew Kirkland

VINEYARD

Ruby Vineyard Estate

CLONES

33% Wädensvil

33% Pommard

33% Dijon115

SOIL TYPE

Laurelwood

ALCOHOL

13.2%

BOTTLING

January 15, 2024

HARVEST

October 8, 2022 - October 12, 2022



COLLABORATIVE PINOT NOIR LOTS | #11 - 15

All year long, we are celebrating the 40th anniversary of the Willamette Valley AVA, a wine region truly built on collaboration. These one-of-a-kind wines are each made with friendship and creativity by two winemakers who embody the camaraderie that makes the Willamette Valley special.



PENNER-ASH WINE CELLARS & DUSKY GOOSE



LOT #11 | 60 BOTTLES {5 CASES}

2022 PINOT NOIR | *Pillow Talk*

THE WINE. *Dusky Goose and Penner-Ash Wine Cellars have a long history of working together under the leadership of Lynn Penner-Ash. In 2022, husband and wife duo Hans Van Dale and Kate Ayres decided to take their years-long history and make a collaboration blend.*

THE WINERIES. *It's exciting to be on the precipice of something big. Native Oregonians, John and Linda Carter could taste the future when they founded the Dusky Goose winery in 2002. They knew the Willamette Valley was ripe for producing age-worthy, world-class wine. Having traveled extensively and experienced great wines of the Old World, the Carters were ready to make Oregon synonymous with the great wines of the New World.*

Willamette Valley legend Lynn Penner-Ash rounded out the Carters' team along with vineyard manager Andy Humphrey. In 2021, Lynn handed over the reins to current winemaker Hans Van Dale. Thrilled and honored to carry on the Dusky Goose legacy, Hans loves crafting wines worthy of the Carters' vision. He knows that attention to detail and the ability to make elegant wines take patience, persistence, and trust. Like the Carters, Hans values the sense of place and collaborative spirit that Willamette Valley provides.

PENNERASH.COM
DUSKYGOOSE.COM

@PENNERASHPINOT
@DUSKYGOOSEWINERY



AVA
Willamette Valley

WINEMAKERS
Kate Ayres and Hans Van Dale

ALCOHOL
14.2%

BOTTLING
September 1, 2023

HARVEST
October 7, 2022 - October 15, 2022

MARTIN WOODS & HOLOCENE



LOT #12 | 60 BOTTLES {5 CASES}

2022 PINOT NOIR | *Meditations*

THE WINERIES. *Martin Woods (the woods and the winery) is hidden in the oak-forested foothills of Oregon's Coast Range, within the cool-climate McMinnville AVA, Willamette Valley. Martin Woods is both the home and winery for winemaker/vigneron Evan Martin, who has been driven by a passion since 2009 for discovering the most compelling terroir in Oregon.*

Holocene – “The name given to the last 11,700 years of the Earth’s history — the time since the end of the last ice age to the present day is the Holocene epoch.” Holocene is Pinot Noir and Chardonnay sourced from some of the top vineyards in the Willamette Valley. These wines are crafted honestly and transparently by winemaker Todd Alexander, with the goal being to showcase the best possible expression of vintage and terroir from each site and to craft some of the very best wines from this beautiful region every year.

MARTINWOODSWINERY.COM
HOLOCENEWINES.COM

@HOLOCENEWINES
@MARTIN_WOODS_WINERY

WINEMAKERS
Evan Martin and Todd Alexander

SOIL TYPE
Volcanic and Marine Sediments

BOTTLING
Summer 2024

HARVEST
October 2022

LOT #13 | 60 BOTTLES {5 CASES}

2022 PINOT NOIR | *Meeting of the Minds*

THE WINE. This year, Dobbes Family Winery and Atticus Wine partnered together, blending barrels from each winery into a complex and intriguing collaborative offering. Starting with the best blends in their cellars, Winemakers Derek Einberger of Dobbes, and Ximena Orrego of Atticus have achieved a perfect balance between power and elegance.

THE WINERIES. Oregon is a state of limitless possibilities. At Dobbes, we have been making wine with that same vision for over 20 years. Rooted in tradition, yet unbound by convention, we make wines that represent not only the varied terroir of Oregon, but also the true spirit of its people. Simultaneously honoring tradition and welcoming innovation, you'll see this dichotomy represented in every aspect of Dobbes—our modern-meets-rustic tasting room, our diversely talented team, and each bottle of our wine that you share with your extension of family, however you choose to define it.

Atticus is a small winery owned by the Orrego-Insley family. We use gentle and restrained winemaking techniques to create low volume, handcrafted wines. We have been making wine commercially for more than 10 years in limited quantities, and our goal is to make the best possible Pinot Noir from our site. While we plan to grow our case production and our estate vineyard near Yamhill over time, we intend to remain family owned and operated, producing elegant and complex, yet approachable wines and embracing Oregon's value of nurturing the land and the future.



AVA
Willamette Valley

WINEMAKERS
Derek Einberger & Ximena Orrego

VINEYARDS
Atticus Vineyard (50%)
Seabreeze Vineyard (20%)
Dupee Vineyard (15%)
Crawford Beck Vineyard (15%)

ALCOHOL
13.5%

BOTTLING
August 8, 2023

HARVEST
October 22, 2022

LOT #14 | 60 BOTTLES {5 CASES}

2022 PINOT NOIR | *Deep Roots*

THE WINE. Deep Roots is a collaborative wine highlighting the unique expression of deep-rooted vines from Red Hills Vineyard (Archery Summit) and Résonance Vineyards. These vines are grown off the oldest rootstock from each estate site, revealing a wine that reflects the terroir of both vineyards and rings true to why place matters. The vineyards, located on the west side of Carlton near the coast range and comprised of ancient marine sedimentary soil and in the Dundee Hills with deep volcanic soils, contribute to the distinct character of this wine and create a profoundly unique expression in the glass.

THE WINERIES. Talent, longevity, and history run deep for Archery Summit and Résonance. Founded between 1993 and 2013 and two hillsides away, both projects align in their commitment to farming and producing the highest quality Pinot noir in the Willamette Valley. At Archery Summit, Winemaker Ian Burch leads the way, ensuring that the winery stays true to its commitment to excellence, while Guillaume Large is the driving force behind Résonance Wines, bringing his expertise and passion from Burgundy. Collectively, they bring the traditions of Burgundy's Maison Louis Jadot and new world traditions of the Willamette, honoring the unique terroir of Oregon's Willamette Valley. 2023 brought high accolades to both producers, naming them among Wine Spectator's Top 100 Wines.



AVA
Willamette Valley

WINEMAKERS
Ian Burch & Guillaume Large

VINEYARDS
Red Hills Vineyard and Résonance Vineyard

CLONE
Own-rooted Pommard

SOIL TYPES
Jory & Marine Sedimentary

ALCOHOL
13.5%

BOTTLING
March 19, 2024

HARVEST
October 10, 2022 - October 13, 2022



LOT #15 | 120 BOTTLES {10 CASES}

2022 PINOT NOIR | Tailgate

THE WINE. When Sokol Blosser purchased Kalita Vineyard in 2021, owner Alex Sokol Blosser knew that Et Fille owner Jessica Mozeico had been working with the vineyard since 2004. They met at Kalita Vineyard to discuss the transition. They sat on the tailgate of Alex's truck for four hours and ultimately decided that Sokol Blosser would allow Et Fille to continue to make wine from the site. This lot celebrates that spirit of collaboration and the belief that we all make better wines together. The Tailgate Pinot Noir takes the best from 2022 Kalita Vineyard from each cellar and combines it into a totally unique wine.

THE WINERIES. The story of Et Fille Wines is about family. It is how it started, why it makes wine, and what it hopes accompanies its wines at your dinner table. Et Fille, which means "and daughter", was co-founded in 2003 by father and daughter winemakers and is now in its second generation with daughter Jessica making wine inspired by her late father's legacy and daughter's future. They are a B Corp Certified winery crafting wines from sustainably farmed vineyards in the Willamette Valley.

When Susan Sokol and Bill Blosser planted their first vines in the Dundee Hills AVA of the Willamette Valley in 1971, they needed all of their youthful self-confidence, energy and determination to make their way because, at the time, there was no wine industry in Oregon. Sokol Blosser has survived, grown and prospered as a family-owned and run operation, and is proud to have been part of developing and shaping Oregon's now prominent wine industry. It is a B Corp Certified winery creating wines of world class quality that are produced sustainably, mindful of the environment, that express the distinctive flavors of its hillside vineyards.

AVA

Yamhill-Carlton, Willamette Valley

WINEMAKERS

Jessica Mozeico and Robin Howell

VINEYARD

Kalita Vineyard

SOIL TYPE

Marine Sedimentary

ALCOHOL

13.9%

BOTTLING

August 16, 2023

HARVEST

October 13, 2022



PINOT NOIR LOTS | #16 - 30

The Willamette Valley is one of the top locations in the US for cool-climate grape growing; Pinot Noir and Chardonnay shine here... this has always been a place where new and up-and-coming wine talent has thrived."

CHARLES CURTIS, MW

Decanter



SWEET CHEEKS WINERY



LOT #16 | 60 BOTTLES {5 CASES}

2022 PINOT NOIR | *Resilient Roots*

THE WINE. *They said this grape wouldn't grow in the slopes of the South Willamette Valley. They said the wine wouldn't stand up to the others. They said don't do it. With every doubt, the roots grew a little deeper. With every twist and turn, the vines still reach for the sky and nourish the grapes. A man stands below an oak tree with his black lab, looking over the bounty of the vintage, and decides to build a place of belonging. He invites a future winemaker with an adventurous spirit and equal grit to capture this resilience in a bottle.*

THE WINERY. *Sweet Cheeks Winery was built by the true master of determination and adventure, Dan Smith. He took chances, and he believed in the underdog. In 2001, he stood below the oak tree that anchors our vineyard and knew our valley should be shared. While building the winery, he formed a friendship with a local cellar hand, Leo. Moving from the Philippines in the early 90s in search of the American dream, Leo never imagined he would become a winemaker. With our first vintage 20 years ago, they grew a community that surpassed their wildest dreams.*

SWEETCHEEKSWINERY.COM

@SWEETCHEEKSWINERY

AVA
Willamette Valley

WINEMAKER
Leo Gabica

VINEYARD
Sweet Cheeks Winery

BLOCKS
*Boss' Block (777)
Wildchild (Wädenswil)
Kody's Block (115)*

CLONES
777, 115 and Wädenswil

SOIL TYPE
Willakenzie

ALCOHOL
13.0%

BOTTLING
June 28, 2023

HARVEST
October 17, 2022 - October 18, 2022

LEMELSON VINEYARDS

LOT #17 | 60 BOTTLES {5 CASES}

2022 PINOT NOIR | *Rising Tides*

THE WINE. *Nestled in the heart of Oregon's Willamette Valley, where sprawling vineyards meet the rugged coastline, emerges an extraordinary Pinot noir from Lemelson Vineyards – Rising Tides. An elegant wine that is a tribute to the dynamic interplay between the fertile soil, the cool maritime climate, and our commitment to organic farming practices.*

Rising Tides Pinot Noir reflects not only the natural forces at play but also the resilience and collective spirit of the Oregon wine community. It symbolizes our shared commitment to producing exceptional wines that tell a story of determination, passion, and the preservation of the land we call home.

THE WINERY. *Lemelson Vineyards began as a dream – a dream to create a winery that celebrates innovation in technology, sustainability through nature, and tradition in winemaking. Eric Lemelson had two clear goals when he began visualizing his winery: to design a “no compromises” Pinot noir production facility focused exclusively on quality and to further the longevity of the pristine state that he calls home using building practices that define his commitment to the environment. Lemelson Vineyards is comprised of five organically-farmed vineyards in the northern Willamette Valley across three AVAs – the Dundee Hills, Yamhill-Carlton and the Chehalem Mountains.*

LEMELSONVINEYARDS.COM

@LEMELSONWINERY

LEMELSON VINEYARDS

AVA
Willamette Valley

WINEMAKER
Matt Wengel

VINEYARDS
*Stermer Vineyard - Yamhill-Carlton (50%)
Meyer Vineyard - Dundee Hills (50%)*

SOIL TYPES
Marine Sedimentary and Jory Volcanic

ALCOHOL
13.6%

BOTTLING
June 1, 2024

HARVEST
October 13, 2022 - October 16, 2022



COOPER MOUNTAIN VINEYARDS

LOT #18 | 60 BOTTLES {5 CASES}

2022 PINOT NOIR | MCMLXIX

THE WINE. MCMLXIX or 1969 was a time of renegades. The Beatles' "Abbey Road" filled the airwaves and the Vietnam War raged, the 1960s counterculture converged in the small upstate New York town of Woodstock. Simultaneously, humanity achieved the remarkable feat of landing on the moon. Meanwhile, in Oregon's Willamette Valley, on Dopp Road in the Chehalem Mountains, Dick Erath married Pinot noir vines to this place, giving birth to Chehalem Mountain Vineyard. This wine stands as a homage to the pioneers—both past and present—who ventured to the Willamette Valley, sparking a revolutionary spirit.

THE WINERY. Founded in 1978 by Dr. Robert and Corrine Gross, Cooper Mountain Vineyards is an early Willamette Valley winery, situated 10 miles southwest of Portland, Oregon. Dr. Gross, a pioneering homeopathic doctor, intricately threaded biodynamic principles into our very essence. Achieving Certified Organic status in 1995, and proudly attaining Demeter's Biodynamic Certification in 1999, marked us as trailblazers in the Pacific Northwest in biodynamics. Our growth from ten to 375 acres showcases a flourishing expanse of over 200 acres of vines, including elegant varietals such as Pinot gris, Pinot blanc, Tocai Friulano, Gewürztraminer, and Gamay noir. Since 2004, Gilles de Domingo has masterfully orchestrated our winemaking, while Barbara Gross, representing the second generation, guides our sustainable legacy into the promising future.

COOPERMOUNTAINWINE.COM

@COOPERMOUNTAINVINEYARDS

COOPER MOUNTAIN VINEYARDS

AVA

Chehalem Mountains, Willamette Valley

WINEMAKER

Gilles de Domingo

VINEYARD

Chehalem Mountain Vineyard

BLOCKS

A5

CLONES

667

SOIL TYPE

Marine Sedimentary

ALCOHOL

14.1%

BOTTLING

August 28, 2023

HARVEST

October 17, 2022



IRIS VINEYARDS

LOT #19 | 60 BOTTLES {5 CASES}

2022 PINOT NOIR | Lorane Loam

THE WINE. Blended exclusively for Willamette: The Pinot Noir Auction, the fruit for this blend was chosen from select rows in the steepest part of our estate vineyard. Bellpine soil and dry farming at a thousand-foot elevation come together in this exceptional wine representing the vine's struggle to produce a classic, Pommard-driven, Willamette Valley Pinot noir. Aged 10 months in French oak from the acclaimed Mercurey cooperage, this lovely wine opens with aromas of passionflower and tart cherry with chocolate covered black raspberries and rhubarb pie on the palate. Age for the next 8-10 years or enjoy now with Beef Wellington.

THE WINERY. The 37-acre Chalice Estate Vineyard is planted on an 870-acre estate chosen by Proprietor Pamela Frye in 1992 for its unique grape-growing potential. Our Winemaker, Aaron Lieberman, and his team produce world-class, award-winning Willamette Valley wines from our own grapes and from those we source from some of Oregon's finest vineyards. Iris is built on the ancient Greek philosophy of Areté. This value exemplifies the idea of realizing one's fullest potential and the continuous endeavor toward excellence. The principle of Areté is expressed in all that we do, from vine to wine.

IRISVINEYARDS.COM

@IRISVINEYARDS

Iris VINEYARDS

AVA

Willamette Valley

WINEMAKER

Aaron Lieberman

VINEYARD

Chalice Estate Vineyard

SOIL TYPE

Bellpine

ALCOHOL

13.2%

BOTTLING

December 8, 2023

HARVEST

October 12, 2022 - October 21, 2022

LACHINI VINEYARD



LOT #20 | 60 BOTTLES {5 CASES}

2022 PINOT NOIR | *goo, goo, g'joob*

THE WINE. *Inspired from the famed Beatles song “I Am The Walrus”, and partly inspired by Lewis Carroll’s 1871 poem “The Walrus and the Carpenter”. John Lennon explained that the Walrus is just saying a dream – the words don’t mean a lot. “People draw so many conclusions and it’s ridiculous.” Same goes for wine sometimes... while there is artistry, science, mother nature and so much that goes into it—it’s really not that serious—it is meant to be enjoyed! This phrase was also used in the ‘60s and ‘70s as a way of saying ‘all good’. In spite of an early freeze, the 2022 vintage turned out to be ‘all good’ too.*

THE WINERY. *Family owned since 1998. The picturesque 45-acre Estate Vineyard is in the Chehalem Mountains with a new Villa tasting room launched in early 2024. Lachini takes a holistic approach with a long-term vision through Biodynamic farming methods with classical winemaking and attention to details. The focus and hallmark of their luxury Pinot noirs is their structure, balance and long-term ageability. You are invited to delight your senses of the North Willamette Valley through their exquisite wines via the lens of a glass.*

LACHINIVINEYARDS.COM

@LACHINI_VINEYARDS

AVA
Chehalem Mountains, Willamette Valley

WINEMAKER
Florent Merlier

VINEYARD
Lachini Estate Vineyard

BLOCKS
East & Middle

CLONES
Pommard, 114, 115, 777, Wädenswil, Swan

SOIL TYPE
Willakenzie Series

ALCOHOL
14.0%

BOTTLING
April 9, 2024

HARVEST
October 3, 2022 - October 18, 2022

WILLAMETTE VALLEY VINEYARDS

WILLAMETTE VALLEY
VINEYARDS

LOT #21 | 60 BOTTLES {5 CASES}

2022 PINOT NOIR | *First Block*

THE WINE. *This wine is sourced exclusively from 15 acres of Pinot noir from the first plantings at our Estate Vineyard. Founder Jim Bernau planted these vines using a Christmas tree planter pulled behind his 33-horsepower tractor and hand-watered using 17 lengths of garden hoses. The Bernau Block, with its shallow Nekia soils, southern exposure and higher elevation, offers us small clusters of Pinot noir resulting in greatly concentrated, complex and balanced wines.*

THE WINERY. *Established 40 years ago by founder Jim Bernau, Willamette Valley Vineyards has gone from an idea to one of the region’s leading wineries, earning the title “One of America’s Great Pinot Noir Producers” from Wine Enthusiast. Jim’s vision of organizing the support of wine enthusiasts to grow world-class wines through shared ownership has resulted in over 26,000 owners. Willamette has collaboratively grown its estate vineyards through partnerships like the merger with Oregon wine industry pioneer Bill Fuller of Tualatin Vineyards (est. 1973) and the O’Briens of Elton Vineyard (est. 1983). All of our barrel-aged Pinot noir from its sustainably farmed estate vineyards.*

WVV.COM

@WILLAMETTEVALLEYVINEYARDS

AVA
Willamette Valley

WINEMAKER
Terry Culton

VINEYARD
Estate Vineyard

BLOCK
Bernau Block

CLONES
667 & 777

SOIL TYPES
Jory & Nekia

ALCOHOL
13.8%

BOTTLING
April 1, 2024

HARVEST
October 18, 2022 - October 20, 2022



TORII MOR

LOT #22 | 60 BOTTLES {5 CASES}

2022 PINOT NOIR | *Chip Off The Old Blocks*

THE WINE. *Olson Estate Vineyard, formerly McDaniel Vineyard, was initially planted in 1972 by some of the original Oregon wine industry pioneers. A collaboration based around the friendship of Jim McDaniel, David Lett and Charles Coury resulted in this enchanting vineyard site. The wine is produced from plantings from the original three blocks of Olson Vineyard, representing the oldest vines on the site, producing a complex wine layered a balance of fruit, earth and soft tannins. Enhanced by the traditional winemaking style of winemaker Jon Tomaselli, the fruit from the old blocks was fermented separately in 2.5-ton upright fermenters and aged for 15 months in 28% new French oak. This wine truly manifests the complexities that distinguish old vines grown in the Dundee Hills.*

THE WINERY. *Torii Mor Winery was founded in 1993 by Donald Olson MD, who remains the owner to this day. Since its modest beginnings with just over 1,000 cases, Torii Mor has blossomed into a super-premium winery that focuses on small lots of handcrafted vineyard designated Pinot noir. Winemaker Jon Tomaselli is passionately producing world-class Pinot noir in the Dundee Hills of Oregon. With commitment to sustainability, Torii Mor has achieved LIVE Certification for both our Olson Estate Vineyard and our LEED Gold-Certified winery while continuing to craft high-quality, complex wines that possess a quiet elegance.*

TORIIIMORWINERY.COM

@TORIIIMOR



AVA
Dundee Hills, Willamette Valley

WINEMAKER
Jon Tomaselli

VINEYARD
Olson Estate Vineyard

BLOCKS
Lett, Erath and Coury Blocks

CLONE
Massale Selection

SOIL TYPE
Jory

ALCOHOL
13.5%

BOTTLING
February 9, 2024

HARVEST
October 17, 2022

VAN DUZER VINEYARDS

LOT #23 | 60 BOTTLES {5 CASES}

2022 PINOT NOIR | *Zephyra*

THE WINE. *Unseen but powerful, the wind is what gives Van Duzer its meaning. Our estate vineyard sits in the heart of the Van Duzer Corridor, where cooling marine winds help to produce wines of balance and complexity. Defined by these winds, our Zephyra Pinot Noir is a blend of wine crafted from Dijon clone blocks on the west side of our property. The wine strives to carry both the tension and richness that are typical of the west side of our property, while still retaining a fresh acid balance typical of the Van Duzer Corridor.*

THE WINERY. *We specialize in balanced and lively site-driven wines that reflect the unique impact of the wind and the marine soils. As the oldest winery in the AVA, Van Duzer Vineyards has naturally evolved into the defining producer of cool-climate Pinot noir in the Van Duzer Corridor. In this wild, beautiful, out-of-the-way place—where the winds blow just right—you'll find our 82 acres of vines, unforgettable 360-degree views and meticulously crafted wines. We're a bit off the beaten path, but we think that's where the best adventures are found.*

VANDUZER.COM

@VANDUZERVINEYARDS



AVA
Van Duzer Corridor, Willamette Valley

WINEMAKER
Eric Misiewicz

VINEYARD
Van Duzer Estate

BLOCKS
29, 30, 36

CLONES
777, 667

SOIL TYPE
Chehulpum

ALCOHOL
13.8%

BOTTLING
September 7, 2023

HARVEST
October 20, 2022

NYSA

LOT #24 | 60 BOTTLES {5 CASES}

2022 PINOT NOIR | *The Gift*

THE WINE. *Dionysius, the god of wine, was raised in the land of Nysa, where he would learn the craft of winemaking. He would later share this 'gift' with us mortals. This 2022 offering is a special blend of some of the most coveted blocks of Nysa Vineyard. The cuvée is created from select barrels of destemmed 777 clone and Wädensvil. The wine was then aged in 25% new French oak to add to the complexity and depth, resulting in a Pinot noir of structure, elegance and balance. Nysa wines are made to be "gracefully aged", so patience will be most rewarded.*

THE WINERY. *Nysa Vineyard was planted in 1990 by owner and winemaker, Michael Mega. It was with passion, hard work and patience that Nysa Vineyard, in the Dundee Hills, has become one of the most prestigious, providing Pinot noir to acclaimed producers throughout the Willamette Valley. Michael crafts with the intent of creating wines of complexity, concentration and balance. Winemaking begins in the vineyard using organic farming techniques with a nod to sustainability and Mother Nature. A minimalistic approach is taken in the cellar with no fining or filtering at the time of bottling to preserve the subtle complexity of Pinot noir.*

NYSAVINEYARD.COM

@NYSAVINEYARD

NYSA

AVA

Dundee Hills, Willamette Valley

WINEMAKER

Michael Mega

VINEYARD

Nysa Vineyard

CLONES

777, Wädensvil

SOIL TYPE

Jory

ALCOHOL

13.6%

BOTTLING

March 1, 2024

HARVEST

October 18, 2022 - October 19, 2022

PURPLE HANDS WINERY

LOT #25 | 60 BOTTLES {5 CASES}

2022 PINOT NOIR | *Foot Prints Dressed in Red*

THE WINE. *This is a special selection by Cody Wright from our highest elevation blocks at our Estate Vineyard Haakon Lenai. Named after the middle names of Cody and Marque's two children: Tyrus Haakon and Wynter Lenai. It is a 35-acre property located in the Dundee Hills. Southeast facing with 100% Jory soil, it ranges in elevation from 400 to 700 ft. The vineyard is farmed Certified Organic by Cody and his farming team.*

THE WINERY. *Founded in 2005 by Cody and Marque Wright, Purple Hands works passionately to offer an experience of humble luxury—drawn from the details of a deep geologic story, expressed through authentically Oregon Pinot noir and Chardonnay.*

Native to Oregon vineyards and farmland, Cody and Marque are most intrigued by wines that reveal the history of their native landscape. The name Purple Hands is meant to depict this work: the work of harvest when your hands are purple and black and rugged from long days and nights of pushing yourself to create and sustain quality; the work that comes from the soul; the work fundamentals that Cody and Marque's families demonstrate and that they hope their children will embrace.

PURPLEHANDSWINE.COM

@PURPLE.HANDS.WINERY



AVA

Dundee Hills, Willamette Valley

WINEMAKER

Cody Wright

VINEYARD

Haakon Lenai Vineyard (Estate Vineyard)

BLOCKS

20, 21

CLONES

Pomard, 667

SOIL TYPE

Jory

ALCOHOL

13.5%

BOTTLING

June 15, 2022

HARVEST

September 15, 2022 - September 15, 2022





LOT #26 | 60 BOTTLES {5 CASES}

2022 PINOT NOIR | *Meaningful Massale*

THE WINE. *Vivid Vineyard is the only vineyard where we control all aspects of farming. It is a high-density planting of five different clones of Pinot noir that we choose to pick and ferment all together. Sitting on volcanic Jory soil at just over 600 feet in the cool and windy Eola Hills, this site produces a wine with both a voluptuous body and focused acidity.*

THE WINERY. *Working in restaurants brought me to wine, and my past work guides our direction in the vineyards, cellar and tasting room. We aim to produce wines of purity, energy and place--wines that showcase the land more than our hands.*

AVA
Eola-Amity Hills, Willamette Valley

WINEMAKER
John Grochau

VINEYARD
Vivid Vineyard

CLONES
114, 115, Pommard, Wädensvil, 777

SOIL TYPE
Jory

ALCOHOL
13.5%

BOTTLING
February 22, 2024

HARVEST
October 6, 2022



LOT #27 | 60 BOTTLES {5 CASES}

2022 PINOT NOIR | *Gran Vin*

THE WINE. *This wine is a great representation of the Jory soils found in Dundee Hills. Despite its elegance, it has a humble spirit. The wine has a luxurious red-purple hue and is characterized by ripe cherry notes with hints of black tea. The well-integrated tannins balance the fresh fruitiness, and the palate lingers with complexities. While it is wonderful now, this vintage of Gran Vin Pinot Noir can be aged for the next decade. To produce this wine, we sourced grapes from our Iron Filbert Vineyard in Dundee Hills, mostly consisting of Pommard clones. The final blend was a combination of stainless and concrete ferments with an average of 20 days on skins before pressing. The fermentation was 100% native and spontaneous. The wine was aged for 11 months on lees in 10% new oak.*

THE WINERY. *The Iron Filbert Vineyard is situated in the Dundee Hills, which is considered the epicenter of the Willamette Valley. It was formerly a hazelnut orchard. In 2013, we replanted the property with thirteen high-density acres of Pinot noir and two acres of Chardonnay, which are grown organically. The vineyard faces south and runs north to south. It ranges in elevation from 300 to 500 feet and has Jory soil that is rich in iron. This volcanic soil also contains basalt boulders that were deposited by glacial flow from the Missoula Floods. Our estate produces timeless wine through meticulous and almost obsessive work in the vineyards. Stewardship of the land is at the heart of everything we do. We produce elegant wines grounded in the wisdom and traditions passed down between generations of winemakers.*

AVA
Dundee Hills, Willamette Valley

WINEMAKER
Jared Etzel

VINEYARD
Iron Filbert Vineyard

BLOCKS
2 & 3

CLONES
Pommard, 943, 667, Wädenswil

SOIL TYPE
Jory

ALCOHOL
13.0%

BOTTLING
August 17, 2023

HARVEST
September 28, 2022 - October 20, 2022

DOMAINE DIVIO

LOT #28 | 60 BOTTLES {5 CASES}

2022 PINOT NOIR | *Velvet Ribbon*

THE WINE. Nestled in the heart of the Ribbon Ridge AVA, the Domaine Divio Estate Vineyard has its roots in a complex clay ground. This unique marine sedimentary soil confers to this Pinot noir wine an elegant silky texture as soft as velvet.

THE WINERY. Bruno Corneaux, a fourth-generation Burgundian vintner, refers to Willamette Valley as “the Pinot noir promised land.” Bruno decided to leave his Burgundian vineyards behind once he fell in love with Oregon in 1996 and decided to create his own label, Domaine Divio, to make wine with premium fruit from the Willamette Valley.

In 2014 he planted Pinot noir and Chardonnay and built a tasting room on his Estate in the Ribbon Ridge AVA.

Domaine Divio focuses on elegant and complex Pinot noir and Chardonnay wines using minimal intervention to reflect the essence of the beautiful fruit of the Willamette Valley in a traditional Burgundian style.

DOMAINE DIVIO.COM

@DOMAINE DIVIO

Domaine Divio

AVA

Ribbon Ridge, Willamette Valley

WINEMAKER

Bruno Corneaux

VINEYARD

Clos Gallia - Domaine Divio Estate

CLONE

Pommard

SOIL TYPE

Marine Sedimentary

ALCOHOL

13.7%

BOTTLING

November 15, 2023

HARVEST

September 20, 2022

RIDGECREST

LOT #29 | 60 BOTTLES {5 CASES}

2022 PINOT NOIR | *Lock, Stock & Two Smoking Barrels*

THE WINE. Lock in your bids so you can Stock up your cellar with our favorite Two Smoking Barrels selection from Ribbon Ridge!

Our 2022 Pinot Noir Auction lot came from Wynne’s two favorite barrels in the cellar containing 100% Pommard clone from our 5 Acre and 7 Acre Blocks, planted in 1982 and 1983. Both barrels were Gillet Grande Selection, one new and one second use barrel, containing 35% whole cluster. A lot you don’t want to miss, so scheme up a way to heist these 60 special bottles.

THE WINERY. With five decades of experience and the first vines planted on Ribbon Ridge, each bottle of Estate-grown Pinot noir, Riesling, Pinot gris, Grüner Veltliner, Chenin blanc, Chardonnay and Gamay noir we craft is reflective of the Willamette Valley’s reputation as one of the world’s truly special wine regions.

RIBBONRIDGEWINERY.COM

@RIBBONRIDGEWINERY



AVA

Ribbon Ridge, Willamette Valley

WINEMAKERS

Wynne & Harry Peterson-Nedry

VINEYARD

Ridgecrest Vineyards

BLOCKS

5 Acre & 7 Acre Blocks

CLONE

100% Pommard

SOIL TYPE

Marine Sedimentary

ALCOHOL

13.7%

BOTTLING

May 25, 2024

HARVEST

October 12, 2022



WHITE ROSE ESTATE

LOT #30 | 60 BOTTLES {5 CASES}

2022 PINOT NOIR | *Aesthetic*

THE WINE. *This blend of three different vineyard sites is a culmination of over 20 years of winemaking experience that has directed White Rose Estate to craft wines that illuminate the subjective components of qualities. This “Aesthetically” pleasing wine showcases how blending Pinot noir from different sites with a specific winemaking objective captures the ultra-premium capabilities of an Oregon Pinot noir.*

THE WINERY. *Started in 2001 by Greg Sanders, White Rose Estate vision is to sync our winemaking objectives to the emotional connection you are seeking within your wine experience.*

WHITEROSEESTATE.COM

@WHITEROSEESTATE

WHITE ROSE ESTATE

AVA

Willamette Valley

WINEMAKERS

Greg Sanders and Greg Urmini

VINEYARDS

*White Rose Vineyard
Meredith Mitchell Vineyard
Guillen Vineyard*

CLONES

Pommard, 115

SOIL TYPE

Jory

ALCOHOL

13.2%

BOTTLING

January 24, 2024

HARVEST

October 17, 2022 - October 19, 2022

LARGE LOTS | #31 - 32

If you're here for the 20-case lots, now is your moment! There are only two of them, so don't miss your chance.



WESTMOUNT WINE CO



LOT #31 | 240 BOTTLES {20 CASES}

2022 PINOT NOIR | 22 (*Westmount's Version*)

THE WINE.

*"I don't know about you, but I am feeling 22
Everything will be alright if you keep me next to you
You don't know about me, but I'll bet you want to
Everything will be alright if we just keep dancing like we're 22"*
- Taylor Swift

You will be The Lucky One, dancing like you are 22 if you score this generous, one-of-a-kind, 20-case Pinot noir lot from Westmount. Like Swift, this Red offering is a showstopper, an energetic and expressive Message in a Bottle. That's Nothing New from this creative winemaking team that consistently creates a State of Grace from this Holy Ground vineyard in Monmouth. Make this wine your own, and don't miss this Willamette Valley rockstar!

THE WINERY. *Westmount Wine Co. is rooted in the Pacific Northwest, "West of the Mountains." Each team member migrated to Oregon wine country to pursue another kind of life. It reflects our team's aspirations and inspirations for a more casual, relaxed lifestyle, good food, and good friends in the backdrop of Oregon's stunning scenery. At Westmount, we believe we are the sum of our individual experiences. We believe in crafting wines that reflect this amazing place we call home and that any pretension or snobbery should be taken elsewhere. We enjoy what we do. We are stewards of our land. We farm to improve this place, and we love showcasing its bounty.*

WESTMOUNTWINECO.COM

@WESTMOUNTWINE



MAISON NOIR WINES



LOT #32 | 240 BOTTLES {20 CASES}

2022 PINOT NOIR | *Lamb of God*

THE WINE. *Lamb of God embodies the finest qualities from one of the most distinguished AVAs in the Willamette Valley: the Eola-Amity Hills. Since our philosophy on oak has been to use it as a seasoning agent and not a weapon, this wine is aged in two- to three-year-old barrels. Toothsome dark fruit and a silky, voluptuous mouthfeel are shepherded into the divine concoction. Plan to sacrifice bottle after bottle.*

THE WINERY. *Maison Noir Wines was founded in 2007 by iconoclastic sommelier André Hueston Mack, a Per Se and French Laundry alumnus, incorporating his trademark attitude and personal perspective on wine subculture. The wines are unique and distinctive garage wines (micro-négociant), sourcing the best fruit possible in the Willamette Valley region of Oregon to produce wines showing the individuality of their respective sites and terroirs.*

MAISONNOIRWINES.COM

@MAISONNOIRWINES



AVA
Eola-Amity Hills, Willamette Valley

WINEMAKER
André Hueston Mack

VINEYARD
Zena Crown Vineyard

SOIL TYPE
Nekia Volcanic

ALCOHOL
14.3%

BOTTLING
Spring 2024

HARVEST
October 20, 2022

PINOT NOIR LOTS | #33 - 56

"The heart of Oregon's wine production, Willamette Valley, continues its reign as one of the most dynamic wine regions in the country. The excitement is palpable across the state, as major players from the world of wine bring new energy and investment to the scene."

TIM FISH
Wine Spectator



COEUR DE TERRE VINEYARD

LOT #33 | 60 BOTTLES {5 CASES}

2022 PINOT NOIR | *Sacré Coeur*

THE WINE. *This wine comes from our Heritage blocks planted between 1999 and 2003 to a Selection Massale of Pinot noir clones grafted on site. Sacré Coeur translates to Sacred Heart, and this wine is a selection of wine from eight different barrels meant to capture the soul, spirit and vibrance of our estate vineyard.*

THE WINERY. *We came to the Willamette Valley to produce wines that reflect our values and the diversity of this beautiful place. By utilizing strictly organic/regenerative practices in the vineyard and minimalist practices in the winery, we feel we are able to demonstrate the unique qualities of our wine, while providing an environment where our family and team members can thrive.*

AVA
McMinnville, Willamette Valley

WINEMAKER
Scott Neal

VINEYARD
Coeur de Terre Vineyard

BLOCKS
*Renelle's Block
Sarah Jane's Block
Abby's Block
Tallulah's Run*

SOIL TYPES
Sedimentary and Volcanic

ALCOHOL
13.8%

BOTTLING
November 2, 2023

HARVEST
October 19, 2022 - October 22, 2022

BJÖRNSON VINEYARD

LOT #34 | 60 BOTTLES {5 CASES}

2022 PINOT NOIR | *Vignette*

THE WINE. Taken from the definition of vignette, this wine brings to focus the intense, complex, and evocative nature of Björnson Vineyard.

THE WINERY. Only an hour from Portland but a world away. Award-winning wines, panoramic views, and friendly, knowledgeable staff. Björnson Vineyard is part of a scenic 107-acre farm, located in the heart of the Willamette Valley's Eola-Amity Hills. The vineyard is planted with 28 acres of vines on volcanic (Jory/Nekia) soils ranging in elevation from 450-550 feet. Varieties include: Pinot noir, Gamay noir, Chardonnay, and Auxerrois. Watch for new unique varieties from our new vineyard Pamar, including Gouais Blanc, an ancient grape that is the parent of more than 81 modern varieties!

BJORNSONWINE.COM

@BJORNSONVINEYARD



BJÖRNSON VINEYARD

AVA

Eola-Amity Hills, Willamette Valley

WINEMAKER

Scott Sabbadini

VINEYARD

Björnson Vineyard

SOIL TYPE

Jory-Nekia

ALCOHOL

14.0%

BOTTLING

December 1, 2023

HARVEST

October 14, 2022 - October 23, 2022

LANDLINES ESTATES

LOT #35 | 60 BOTTLES {5 CASES}

2022 PINOT NOIR | *Duet of Morning Sun and Evening Breeze*

THE WINE. Elevated above the valley floor, the vines at Tidalstar Vineyard look southeast across the Willamette Valley. These vines catch the morning sun as it peeks over the Cascades and the evening breeze that wafts off the Pacific. This aspect allows the fruit to ripen across the cool Oregon growing season, developing a mélange of red fruits and herbaceous flavors. In the cellar, this wine has been tended to carefully by our winemaking team and offers soft tannins with vibrant acidity. This wine has plenty of character to offer now or can be cellared to develop for years to come.

THE WINERY. At our core, we believe sustainable farming produces superior wine and a better future for our planet. Following our acquisition of Tidalstar Vineyard in 2016, we quickly began the transition to Biodynamic farming and received Demeter certification in 2020. With its nutrient-rich maritime soils, elevation, and east-facing slope, Tidalstar Vineyard provides the perfect growing conditions for Pinot noir. The winemaking approach to each Landlines Estates Pinot is rooted in a belief that everything is connected, and with close attention to these connections, both seen and unseen, we can create wines that tell the nuanced story of where they come from.

LANDLINESESTATES.COM

@LANDLINESWINE



LANDLINES ESTATES

AVA

Yamhill-Carlton, Willamette Valley

WINEMAKERS

Stephen Webber, Chris Brack

VINEYARD

Tidalstar Vineyard

BLOCKS

9, 10, 12 and 13

CLONES

667, 113, 115, and Wädenswil

SOIL TYPES

Marine Sedimentary, Goodin Silty Clay Loam

ALCOHOL

13.0%

BOTTLING

September 11, 2023

HARVEST

October 4, 2022 - October 8, 2022

R. STUART & CO. WINERY

LOT #36 | 60 BOTTLES {5 CASES}

2022 PINOT NOIR | *Double Life*

THE WINE. *What do an attorney, travel agent, and doctor have in common? They each took a chance on their passions and found a double life in growing world-class Pinot noir. While each of their vineyards' fruit is stunning as a standalone, the cuvée unleashed the harmony between them, enhancing their profiles into something even greater and thus creating a double life of their own. Experience concentrated fruit at the start from the Matteri Vineyard, juicy mid-palate from the Hirschy Vineyard, and classic Burgundian notes from the Weber Vineyard to tie it together.*

THE WINERY. *Established in 2001, R. Stuart & Co. is the culmination of 42 years of Rob Stuart's expertise in the wine industry. His goal is to showcase the hard work which vineyard owners put into growing distinctive, quality fruit. Jordan Rosenberry joined R. Stuart during harvest at 17 years old, and returned after college in 2021 as Production Winemaker. Says Jordan, "To come back to R. Stuart with continued opportunities to learn from Rob – someone that our local wine industry really looks up to – is very full circle for me." The R. Stuart portfolio includes Pinot noir, Pinot gris, port-style wines, Rob's first love of méthode champenoise wines, and more.*

RSTUARTANDCO.COM

@RSTUARTWINE



AVA

Willamette Valley

WINEMAKERS

Jordan Rosenberry & Rob Stuart

VINEYARDS

Hirschy Vineyard (80%)

Matteri Vineyard (10%)

Weber Vineyard (10%)

BLOCKS

Hirschy (A, B, L), Matteri (L, M, N), Weber (7-A)

CLONES

Dijon 667 (47%), Dijon 777 (24%)

Pommard (13%), Wädenswil (11%)

Dijon 115 (6%)

SOIL TYPES

Hirschy - Willakenzie

Matteri - Goodin, Dupee, Sitton

Weber - Jory

ALCOHOL

14.0%

BOTTLING

January 3, 2024

HARVEST

October 16, 2022 - October 18, 2022

BROADLEY VINEYARDS

LOT #37 | 60 BOTTLES {5 CASES}

2022 PINOT NOIR | *Le Fin Du Fin*

THE WINE. *On the nose; rose petals, hibiscus tea, cherry and hint of allspice. Entry is driven with ripe bing cherry and fall raspberries followed by nice weight on the midpalate that leads into a silky satisfying finish. Well-balanced acid to enjoy for 10 years.*

THE WINERY. *Our passion for producing exceptional wine began with our very first vintage back in 1986. From the outset, our goal has always been to consistently craft wines that truly capture the unique character of the vineyards where they are grown. Our dynamic range of hand-crafted wines includes several Pinot noirs, Gamay noir, Chardonnay, and Pinot gris, each boasting bold, rich, layered flavors that stand the test of time. Our 33-acre estate vineyard is dry farmed and sustainably tended, featuring organic materials to promote healthy growth. We believe that sustainability isn't just a buzzword, it's a way of life that's essential for our future.*

BROADLEYVINEYARDS.COM

@BROADLEYVINEYARDS



AVA

Willamette Valley

WINEMAKER

Morgan Broadley

VINEYARDS

Broadley Vineyards

Doration Vineyard

CLONES

Wädenswil & Chalona

SOIL TYPES

Jory/Hazelaire Clay & Witzel Soil

ALCOHOL

13.5%

BOTTLING

February 5, 2024

HARVEST

September 7, 2022 - September 25, 2022

WETZEL ESTATE WINERY



LOT #38 | 60 BOTTLES {5 CASES}

2022 PINOT NOIR | *Anfang*

THE WINE. Our “Anfang” Pinot Noir reflects our German roots and literally means our new beginning at this site. Planted in 1990, these vines were from own-rooted stock planted at the crest of our western block. This wine was aged in one year old German oak barrels. This highly aromatic wine offers up hints of strawberry, potpourri, cranberry and cedar notes. The wine is elegant and well balanced and pleasantly approachable.

THE WINERY. The Wetzel Family has a rich tradition of winemaking history. Originally from Germany, the fourth generation carries on time-honored winemaking techniques to produce wines of depth, character and structure. An excellent addition to any serious collector’s cellar.

WETZELESTATE.COM

@WETZEL_ESTATE



AVA
Van Duzer Corridor, Willamette Valley

WINEMAKERS
Andreas Wetzel and Mark Skoglund

VINEYARD
Andreas Vineyards

BLOCKS
1E and 1F

CLONES
Equal parts Pommard, Wädensvil
and a small percent of 667

SOIL TYPES
Bellpine, Rickreall silty clay loam

ALCOHOL
12.5%

BOTTLING
February 20, 2024

HARVEST
October 22, 2022

KING ESTATE WINERY



LOT #39 | 60 BOTTLES {5 CASES}

2022 PINOT NOIR | *Just Shy*

THE WINE. This five-case lot was made with fruit exclusively from our certified Biodynamic® estate vineyard. The grapes are from a single block, 19G, and one clone, 113. The block is located at one of our vineyard’s highest points, “Just Shy” of 1,200 feet. Dijon clone 113 is known for producing elegant wines with floral aromatics and great balance. This wine is an excellent representation of the clone and our estate terroir.

THE WINERY. King Estate was founded in 1991 on the principles of family, stewardship and tradition. Sitting upon 1,033 acres in Oregon’s prestigious Willamette Valley, King Estate is the largest certified Biodynamic® vineyard in North America. To this day King Estate remains family owned and farmed, dedicated to the highest standards in winemaking.

KINGESTATE.COM

@KINGESTATE

AVA
Willamette Valley

WINEMAKER
Brent Stone

VINEYARD
King Estate Vineyard

BLOCK
19G

CLONE
113

SOIL TYPE
Bellpine

ALCOHOL
13.5%

BOTTLING
February 20, 2024

HARVEST
October 12, 2022



THE FOUR GRACES



LOT #40 | 60 BOTTLES {5 CASES}

2022 PINOT NOIR | *Grace & Harmony*

THE WINE. From the Black Walnut Estate Vineyard, high on the hill overlooking the Dundee Hills. Blocks 7 and 8 (Wadenswil and Pommard) were planted in 2001, and interact playfully together, overlaying structure and softness. True to the character of the Dundee Hills, its bright red fruit is backed by spice and sweetness, with the classic rustic Jory undertones.

THE WINERY. As a leading Oregon winery, The Four Graces specializes in Pinot noir as well as small production Pinot gris, Pinot blanc and Chardonnay. Our wines come from three estate vineyards located in Willamette Valley's Dundee Hills, Yamhill-Carlton and Van Duzer Corridor AVAs, as well as other top sites in the Willamette Valley. The Four Graces is committed to making site specific wines that are rich, complex and allow the fruit to be elegantly expressed.

THEFOURGRACES.COM

@FOURGRACESWINE



DAVID PAIGE WINES



LOT #41 | 60 BOTTLES {5 CASES}

2022 PINOT NOIR | *New Winery, Who Dis?*

THE WINE. Our RPG Estate Vineyard is planted on a roiling volcanic slope in the Eola-Amity Hills. The mature vines continue to struggle against the rocky soil, producing wines of great depth and elegance. For this offering, we selected a handful of exceptional barrels from the vineyard which we believe illustrate the distinctive tannin structure and precisely fruited balance of the site that we find so compelling.

THE WINERY. Dave has spent more than 30 years learning the art, science, and craft of making wine, mostly right here in the Willamette Valley. He holds a deep respect for the many great sub-regions and vineyards of the greater Willamette Valley AVA and seeks to highlight what makes each region and vineyard unique.

PAIGEWINES.COM

@DAVIDPAIGEWINES



WILLAKENZIE ESTATE

WILLAKENZIE ESTATE

LOT #42 | 60 BOTTLES {5 CASES}

2022 PINOT NOIR | *Singularity*

THE WINE. *A Singularity can be described as a point of infinite value where the laws of time and space break down. WillaKenzie Estate is defined by its diverse hillsides, ridgelines, slopes, and benches. This unique topography results in many distinct terroirs that produce an array of Pinot noir expressions. So, why this one? This singular expression of place? The individual block selected for this wine delivers a powerful, brooding, mysterious, and complex Pinot noir. Delicious yet elusive in its dark fruited and savory profile, its gravitational pull will lure you into a profound, single moment in time, one of pause and contemplation.*

THE WINERY. *WillaKenzie Estate is located in the Yamhill-Carlton AVA in the Northern Willamette Valley, Oregon. The winery was established in 1991 by Bernard Lacroute, who was inspired by the Estate's dynamic rolling hills that reminded him of his Burgundian roots. The Estate is named for the marine sedimentary soil series on which the vineyard is planted, in keeping with tradition that great wines reflect a true sense of place. WillaKenzie remains committed to its sustainable practices by preserving the biodiversity of the land and is Oregon's first LIVE certified winery (#001).*

AVA
Yamhill-Carlton, Willamette Valley

WINEMAKER
Erik Kramer

VINEYARD
WillaKenzie Estate

BLOCK
Emery

CLONE
667

SOIL TYPE
WillaKenzie

ALCOHOL
13.8%

BOTTLING
January 24, 2024

HARVEST
October 14, 2022

WILLAKENZIE.COM

@WILLAKENZIE



HARPER VOIT



LOT #43 | 60 BOTTLES {5 CASES}

2022 PINOT NOIR | *Unhinged*

THE WINE. *While we were in the process of building our winery during 2021 and 2022, we spent the first six to eight months without doors--interior or exterior--therefore, operating "Unhinged".*

THE WINERY. *Harper Voit wines are brought to life by acclaimed winemaker Drew Voit alongside winemaker Jessica West, who obsessively craft diverse single-vineyard wines delivering ambitious and dynamic Willamette Valley Pinot Noirs and Pinot Blancs.*

AVA
Eola-Amity Hills, Willamette Valley

WINEMAKER
Drew Voit

VINEYARD
Filament Vineyard

ALCOHOL
14.0%

BOTTLING
August 22, 2023

HARVEST
September 20, 2022 - October 21, 2022

HARPERVOIT.COM

@HARPERVOITWINES



TRISAETUM

LOT #44 | 60 BOTTLES {5 CASES}

2022 PINOT NOIR | *St. Moins de Mots*

THE WINE. *In an era when sound and fury gets the most attention, the best wines in the world are the ones that let you taste the silence; the moments between the words where nuance and subtlety have far more to say than the loudest person in the room. Therefore, we dedicate this wine to our favorite made-up saint...the patron saint of fewer words, St. Moins de Mots.*

In addition, the winning bidder will also receive 6 bottles of the Frey Family Reserve Whiskey; a special distillers cut finished in the exact same barrels that aged St. Moins de Mots and winner of a Double Gold medal at the prestigious 2024 SIP International Spirits Competition.

THE WINERY. *Family-owned and operated in the heart of the Ribbon Ridge AVA, Trisaetum's vineyards are dry-farmed, low or no tilled and always hand-harvested. Founded in 2003 by winemaker James Frey, Trisaetum bottles single vineyard Pinot noir, Riesling and Sparkling wines each vintage.*

In 2020, James joined forces with his daughter Tatum to start Brixeur Spirits which produces vodka and gin from grape distillate, and whiskeys aged in used Pinot, Cabernet and Riesling casks.

TRISAETUM.COM

@TRISAETUM_WINERY

trisaetum

AVA

Ribbon Ridge, Willamette Valley

WINEMAKER

James Frey

VINEYARD

Trisaetum Ribbon Ridge

ALCOHOL

13.2%

BOTTLING

February 1, 2024

HARVEST

October 5, 2022 - October 14, 2022

J. CHRISTOPHER

LOT #45 | 60 BOTTLES {5 CASES}

2022 PINOT NOIR | *Nutty Professor*

THE WINE. *This gorgeous property was purchased in 1965 by math professor Hal Medici. It was originally planted with hazelnut trees that had been toppled in the Columbus Day storm in 1962. Upon purchasing, Hal pulled them back up with a tractor, staked them up, and they lived on until 1975, when Dick Erath & Dick Ponzi convinced him to pull them out and plant a vineyard instead! The self-rooted vines were planted in 1976, with plant material provided by Dick Erath himself. Today this site produces sophisticated Pinot noirs with complex aromatics, amazing texture, and incredible length.*

THE WINERY. *J. Christopher Wines elegantly capture the distinctive character of Oregon's Willamette Valley. Owned by internationally renowned winegrower, Erni Loosen (also owner of Appassionata Estate, where the wines are produced), the focus is on expressive Pinot noir, Chardonnay, Riesling and Sauvignon Blanc made using the patient, unhurried approach of the Old World. Fruit for J. Christopher Wines is sourced from excellent growers in several different sub-appellations of the Willamette Valley. With a deep commitment to environmentally sustainable farming and production practices, the mission of J. Christopher Wines is to produce terroir-driven wines in an age-worthy style that emphasizes finesse, length and balance.*

JCHRISTOPPERWINES.COM

@JCHRISTOPHERWINES

J.CHRISTOPHER



AVA

Chehalem Mountains, Willamette Valley

WINEMAKER

Tim Malone

VINEYARD

Medici Vineyard

BLOCK

Block 5

CLONE

Pommard

SOIL TYPE

Jory

ALCOHOL

13.2%

BOTTLING

April 15, 2024

HARVEST

October 15, 2022

LANGE ESTATE WINERY & VINEYARDS



LOT #46 | 60 BOTTLES {5 CASES}

2022 PINOT NOIR | *Partenaire*

THE WINE. Aged in 50% new oak, the 2021 Partenaire is a blend of fruit from our Redside Vineyard and Freedom Hill Vineyard. The palate displays the elegance and finesse we expect from Pinot noir grown on our Estate, while the nose is more reminiscent of Freedom Hill. It opens with enveloping aromas of blackberry and Damson plum followed by a top note of sassafras, cardamom, and clove. Juicy and seamless, it expands across the palate with red and black fruit wrapped in gentle, fine-grained tannins. The finish is long and precise, leaving behind a lingering suggestion of spice.

THE WINERY. Founded in 1987, Lange Estate is a family-owned and operated winery that has established itself as a top producer of Pinot noir, Chardonnay, and Pinot gris in the prestigious Dundee Hills appellation of Oregon's Willamette Valley. The estate is divided into three sustainably farmed vineyards that span over 60 acres. The property boasts a state-of-the-art winery and tasting room that features spectacular panoramic views of gently sloping, east-facing vineyards, surrounding valleys, and snow-capped Mount Hood in the distance. This destination winery has grown over the past thirty years to become an icon in the region.

LANGEWINERY.COM

@LANGEWINERY

AVA
Willamette Valley

WINEMAKERS
Lange Family

VINEYARDS
Lange Estate Vineyard (50%)
Freedom Hill Vineyard (50%)

BLOCK
Heritage Blocks

CLONES
777, Pommard, Wädenswil

SOIL TYPES
Jory (Volcanic) for Lange Estate Winery,
Bellpine (Marine Sedimentary) for
Freedom Hill Vineyard

ALCOHOL
13.9%

BOTTLING
August 23, 2023

HARVEST
October 11, 2022 - October 18, 2022

RAPTOR RIDGE WINERY



LOT #47 | 60 BOTTLES {5 CASES}

2022 PINOT NOIR | *No Pressure, No Diamonds*

THE WINE. Traditionally, Oregon winemakers watch the weather forecast to determine the appropriate time to pick; generally preferring to wait as long as possible to achieve optimum complexity. The summer of 2022 seemed to go on forever, offering a beautifully long ripening season. October began without a drop of rain forecast and harvest crews waited eagerly in anticipation. Finally on October 21 rain was forecast, and the pressure to pick it all was on! A cramped processing schedule and even tighter pressing schedule meant long days in the cellar, but the result of that pressure is this dazzling, multi-faceted offering. Vineyard Sites include Crawford Beck, Bellevue Cross, Tuscowallame Estate, and Gran Moraine.

THE WINERY. Raptor Ridge Winery is celebrating its 30th harvest this year. Established in 1995 by Scott & Annie Shull to share the joy of winegrowing and foster a close connection with the land and community, the winery and Estate Vineyard are located in the Laurelwood District Sub-AVA of Chehalem Mountains. The property is a natural haven for native raptors and winery guests in a tranquil setting with a view of four mountaintops. Visitors may experience vine-side tastings Laurelwood-grown Pinots and Grüner Veltliner as well as vineyard designated Pinots and eclectic European varieties from several distinguished sites throughout the Willamette Valley.

RAPTORRIDGEWINERY.COM

@RAPTORRIDGEWINERY

AVA
Willamette Valley

WINEMAKER
Shannon Gustafson

ALCOHOL
14.0%

BOTTLING
August 15, 2023

HARVEST
October 9, 2022 - October 20, 2022

HAZELFERN

LOT #48 | 60 BOTTLES {5 CASES}

2022 PINOT NOIR | *The Wonder Years*

We get by with a little help from our friends and with every season, turn, turn, turn.

In the heart of the Chehalem Mountains, surrounded by rolling hills and kissed by the Oregon sun, Hazelfern stands as more than just a winery – it's a cradle of stories, and a sanctuary of young dreams. 2014 marked the beginning of Hazelfern's journey, and a decade later, a coming-of-age tale is unfolding.

The echoes of laughter during the first harvest, the clinking of glasses in the tasting room, and the warm glow of lights from the wine barn under Hazelfern's starlit summer sky. Through triumphs and setbacks, laughter and tears, pandemics and wildfires, life's lessons are being learned among the vines – patience in the aging process, the complexity of blending diverse elements, trusting the process, and the resilience required to weather both frosty mornings and sun-drenched summer days.

In the hot pink glow of Oregon sunsets, Hazelfern is a testament to the wonder years of a winery maturing alongside its vines. The legacy of Hazelfern, streaked with hues of passion and perseverance, is growing up while becoming an enduring chapter in the narrative of Willamette Valley's winemaking heritage.

HAZELFERN.COM

@HAZELFERNCELLARS



AVA
Chehalem Mountains, Willamette Valley

WINEMAKER
Bryan Laing

ALCOHOL
13.5%

BOTTLING
March 15, 2023

HARVEST
October 9, 2022 - October 19, 2022

ROOTS WINE CO

LOT #49 | 60 BOTTLES {5 CASES}

2022 PINOT NOIR | *The Heady Possibilities of Youth*

THE WINE. *The three vineyard sites for this wine are within a half mile of the valley of Laughlin Road, allowing the air to flow between the vines. My attention to this wine is for its uniqueness of place. The first, our Estate Vineyard, is hidden in these hills facing the evening sky, with a volcanic ridge at 625' and sedimentary at the lower elevations. Saffron Vineyard is what I would think of as 'shores of a lake of air' at 300' elevation, with early morning warming. The selected block of Fairsing Vineyard 115 is nested in a bowl protected from winds with shallow soils. All in all it's Bonne Merde!*

THE WINERY. *Born of the Midwest but moved to Idaho as a youth, I fell in love with the Douglas Firs. At the age of nine we moved to York, Pennsylvania, then later to the Chicagoland where I started to play music and get into heavy metal. For hours I would listen to Iron Maiden and Metallica. My parents would have 'gourmet night' where they paired wine and food, and at 13 years old I would sneak their wine after the party. Fast forward to 1996, and we bought our property outside Yamhill, Oregon...*

ROOTS.WINE

@ROOTSWINECOMPANY



AVA
Yamhill-Carlton, Willamette Valley

WINEMAKER
Christian Berg

VINEYARDS
*Estate Vineyard
Saffron Fields Vineyard
Fairsing Vineyard*

CLONES
113, Pommard, 115

SOIL TYPE
Willakenzie

ALCOHOL
13.9%

BOTTLING
March 11, 2024

HARVEST
September 14, 2022 - October 18, 2022

SHEA WINE CELLARS



LOT #50 | 60 BOTTLES {5 CASES}

2022 PINOT NOIR | *Long Shot*

THE WINE. *The 2022 vintage nearly ended before it started. After an April frost event, a harvest in the fall was no sure thing. Luckily, we had a long growing season and unusually warm late fall, allowing the vines to fully bounce back. The 2022 Long Shot Pinot Noir is a barrel selection meant to show the best of this special vintage.*

THE WINERY. *Shea Vineyard was first planted to wine grapes by Dick and Deirdre Shea in the late 1980s. Today Shea Vineyard is a 290-acre property with 155 planted acres. 149 of these acres are planted to Pinot noir vines and the balance is planted to Chardonnay. Roughly 20% of the Pinot noir fruit produced each year by Shea Vineyard is used by Shea Wine Cellars for its releases. The other 80% of the Pinot noir fruit is sold to some of the finest winemakers in Oregon and California.*

AVA
Yamhill-Carlton, Willamette Valley

WINEMAKER
Dana Booth

VINEYARD
Shea Vineyard

SOIL TYPE
Marine Sedimentary

ALCOHOL
13.7%

BOTTLING
August 21, 2023

HARVEST
October 5, 2022 - October 12, 2022

SHEAWINECELLARS.COM

@SHEAWINECELLARS



BLED SOE | MCDANIELS

BLED SOE | MCDANIELS

LOT #51 | 60 BOTTLES {5 CASES}

2022 PINOT NOIR | *Coulee Estate*

THE WINE. *Bledsoe | McDaniels Coulee Estate truly encompasses the complexities and uniqueness of the Eola Amity Hills. The 2022 vintage was beautiful. A cool spring to start, ended with a stunning September and October, creating perfect fruit development. Great fruit expression, hints of forest floor, iron, and a subtle waft of oak. This Pinot noir has firm but velvety tannins, with a beautiful purity of fruit and great acid. Drink now through 2040.*

THE WINERY. *Bledsoe | McDaniels formed as a partnership between Drew Bledsoe and Josh McDaniels to highlight our amazing estate vineyard sites and incredible winemaking team. We are focused on the transparency of Pinot noir from the Willamette Valley and single vineyard Syrah from Walla Walla. Our wines showcase that although these two varietals and valleys have obvious differences, there are also undeniable similarities between the two.*

AVA
Eola-Amity Hills, Willamette Valley

WINEMAKER
Josh McDaniels

VINEYARD
Coulee Estate

CLONE
667

SOIL TYPE
Nekia

ALCOHOL
14.1%

BOTTLING
March 1, 2024

HARVEST
September 22, 2022 - October 22, 2022

BLED SOE MCDANIELS.COM

@BLED SOE_MCDANIELS



WINDERLEA VINEYARD AND WINERY

LOT #52 | 60 BOTTLES {5 CASES}

2022 PINOT NOIR | *On Its Own Roots*

THE WINE. *Once again we look to the oldest vines on the Winderlea Vineyard, own-rooted Pommard planted in 1974, as the foundation for this ethereal wine that best expresses the elegant uplifted red fruit and spice that established the Dundee Hills as the legendary Pinot noir producing area that it is today.*

THE WINERY. *Winderlea is a boutique winery specializing in the limited production of Pinot noir, Chardonnay and Sparkling wine. Established in 2005 with the purchase of the original Dundee Hills Vineyard, a 20-acre estate vineyard planted between 1974 and 1976. Biodynamic® farming practices were established in 2009, and Demeter Biodynamic® certification was earned in 2015 for the vineyard and winemaking. In April of 2015 Winderlea announced it became the second winery in Oregon and fourth winery globally to have achieved B Corp certification. Today Winderlea farms a total of 42 acres in the Dundee Hills, all certified Biodynamic®*

WINDERLEA.COM

@WINDERLEA

winderlea

AVA

Dundee Hills, Willamette Valley

WINEMAKERS

Bill Sweat and Robert Brittan

VINEYARD

Winderlea Vineyard

CLONES

Pommard, 777, 667

SOIL TYPE

Jory

ALCOHOL

12.8%

BOTTLING

August 23, 2023

HARVEST

October 5, 2022 - October 8, 2022



GRAN MORAINE

LOT #53 | 60 BOTTLES {5 CASES}

2022 PINOT NOIR | *Terminal Moraine*

THE WINE. *Behold Ye! The Terminal Moraine! Within this bottle is placed the maximum advancement toward awesomeness that the Gran Moraine team and vineyard may bestow upon the earth.*

THE WINERY. *Oregon wines with a signature style of elegance and restraint, Gran Moraine produces Chardonnay, Pinot noir, and sparkling wines from the Willamette Valley. Our estate vineyards, Gran Moraine Vineyard and our Winery Estate Vineyard, perch on some of the oldest marine sedimentary-based soils in the Yamhill-Carlton sub-AVA of the northern Willamette Valley. Our wines showcase Winemaker Shane Moore's tireless attention to detail in both the vineyard and the winery, which translates to precision and elegance in the bottle.*

GRANMORAINE.COM

@GRANMORAINE

• GRAN • MORAINE

AVA

Yamhill-Carlton, Willamette Valley

WINEMAKER

Shane Moore

VINEYARD

Gran Moraine Vineyard

ALCOHOL

13.2%

BOTTLING

August 18, 2023

HARVEST

October 2, 2022 - October 4, 2022



ROCO WINERY



LOT #54 | 60 BOTTLES {5 CASES}

2022 PINOT NOIR | *Wits' End*

THE WINE. Produced from a small plot on ROCO Winery's founder's private 21-acre Wits' End Vineyard in the Chehalem Mountains AVA, this Pinot noir features winemaker Rollin Soles's unique clonal propagation, 3A, also known as "the ROCO selection." These vines produce smaller-than-normal clusters of tightly packed berries. The result is a complex Pinot noir that offers layer upon layer of intense, silky, elegantly balanced full-bodied flavor.

Handpicked Pinot noir fruit is chilled overnight before being carefully destalked and placed in small open fermenters. Following a ten-day soak and twice daily punch downs, the ferment is gently pressed and sent to barrel for malolactic fermentation. It is then racked once to a unique ratio of new to three-year-old French oak barrels where it ages for 18 months before bottling.

THE WINERY. Established in 2003 by wine industry veterans Rollin Soles and Corby Stonebraker-Soles, ROCO Winery showcases why the Willamette Valley produces the finest Chardonnay, Pinot noir, and Méthode Champenoise Sparkling Wine outside of Europe.

Beginning with 99 cases of Pinot noir in 2003 and features in the White House, ROCO Winery has since become one of the most respected wineries in the region.

With an eye for innovation and 35 years of experience in sustainable agriculture and winemaking, Rollin believes the Willamette Valley's characteristics are unmatched for making world-class wines. Committed to sustainability, ROCO Winery is LIVE Certified and Salmon Safe.

ROCOWINERY.COM

@ROCOWINERY



AVA
Chehalem Mountains, Willamette Valley

WINEMAKER
Rollin Soles

VINEYARD
Wits' End Vineyard

SOIL TYPE
Marine Sedimentary

ALCOHOL
14.5%

BOTTLING
April 9, 2024

HARVEST
October 7, 2022

DROUHIN OREGON ROSEROCK



LOT #55 | 60 BOTTLES {5 CASES}

2022 PINOT NOIR | *Peak to Pique*

THE WINE. There are only 60 bottles of our Peak to Pique Pinot Noir, a special cuvée selected from our Roserock Vineyard in the Eola-Amity Hills AVA. From the top of our property, at 650' elevation, you can see five mountain tops fanning out well beyond the Willamette Valley. Winemaker Véronique Boss-Drouhin captures the energy and beauty of Roserock in a way that piques interest and inspires imagination.

THE WINERY. In 1987, the Drouhin Family established DDO in the Dundee Hills of Oregon's Willamette Valley. In 2013, the Drouhins bought Roserock, an exceptional vineyard in the Eola-Amity Hills. Here, as in Burgundy, we dedicate our work to the respect of nature, the importance of place, and the joy of elegance in wine. In these ways, we hope our wines reflect our love for Oregon.

ROSEROCKOREGON.COM

@ROSEROCKOREGON



AVA
Eola-Amity Hills, Willamette Valley

WINEMAKER
Véronique Boss-Drouhin

VINEYARD
Roserock Vineyard

SOIL TYPE
Volcanic

ALCOHOL
14.0%

BOTTLING
February 2024

HARVEST
October 8, 2022 - October 21, 2022

SOKOL BLOSSER WINERY

LOT #56 | 60 BOTTLES {5 CASES}

2022 PINOT NOIR | *Water to Wine*

THE WINE. *Water is the beginning of every bottle of wine. It feeds the vines and fills each berry. It prepares tanks, steams barrels, and creates coffee to power our team. Our Watershed Block is named after the neighboring Dayton watershed, but despite its namesake, it needs no irrigation. High up on our Estate, Watershed Block boasts rich Jory soil which collects rainfall all winter long which feeds the vines all the way to harvest. This is one of the original vineyard blocks on the Estate and today it produces a bold wine with both an intensity of tannins and of fruit.*

THE WINERY. *For 50+ years, the Sokol Blosser family has been perfecting Pinot noir. Now with the second generation at the helm, the winery has entered a new era under the guidance of co-president siblings: winemaker, Alex Sokol Blosser, and CEO, Alison Sokol Blosser. Their focus remains on crafting exemplary wines that reflect the brilliance of the family's certified organic 89-acre hillside vineyards in the Dundee Hills, as well as exploring the unique terroirs of the Willamette Valley with vineyards in the Eola-Amity Hills and Yamhill-Carlton District. A certified B Corp, Sokol Blosser remains committed to an overall sustainable approach.*

SOKOLBLOSSER.COM

@SOKOLBLOSSER



AVA

Dundee Hills, Willamette Valley

WINEMAKER

Robin Howell

VINEYARD

Sokol Blosser

BLOCK

Watershed Block

CLONES

Wädenswil and Pommard

SOIL TYPE

Jory

ALCOHOL

13.8%

BOTTLING

February 28, 2024

HARVEST

October 11, 2022 - October 17, 2022



CHARDONNAY | #57 - 66

Starting with four delightful collaborations, these limited lots highlight the growing energy and excitement for vibrant Willamette Valley Chardonnay.



ADELSHEIM VINEYARD & ALEXANA ESTATE

ADELSHEIM ALEXANA

LOT #57 | 60 BOTTLES {5 CASES}

2022 CHARDONNAY | *Aces Wild - All-In*

THE WINE. This Chardonnay lot is a collaboration from two of Willamette Valley's most celebrated wineries, Adelsheim and Alexana. Winemakers Gina Hennen (Adelsheim) and Tresider Burns (Alexana) unite two iconic Chardonnay vineyards, 'Boulder Bluff' and 'Gran Moraine', to create this 2022 cuvée worthy of any great wine collection.

Each bottle captures the story of this singular vintage and merges the vision of two founders - the "Aces", David Adelsheim and Dr. Madaiah Revana, who risked everything and went "All-In". This unique bottling personifies their enduring commitments to creating authentic wines of world class quality.

THE WINERIES. Adelsheim Vineyard was established in 1971 with a curious spirit and driven by relentless pursuit of world-class winemaking in an undiscovered wine region, the Chehalem Mountains. Over five decades later, they have played an instrumental role in nearly every aspect of the Oregon wine story and continue to be one of the region's most respected wineries. Winemaker Gina Hennen strives for an authentic expression of Pinot noir and Chardonnay from the richly diverse soil types, elevations, and exposures from their eight estate vineyards. Adelsheim is proudly to be Chehalem Mountains' first winery, woman-owned, women-led, and certified sustainable.

In 2005, Dr. Revana discovered a piece of land tucked along the edge of the Dundee Hills that has since been recognized twice in Wine Spectator's "TOP 100 Wines". The 55-acre Alexana Estate shows remarkable geological diversity, showcasing 18 unique soil types. Small blocks of Pinot noir, Chardonnay and a singular block of Pinot gris planted along soil type boundaries provide a distinctive perspective on Willamette Valley terroir. Winemaker Tresider Burns focuses on fermenting each block in small lots with individual attention to produce classically beautiful wines unique to this tiny pocket of the valley.

ADELSHEIM.COM
ALEXANAWINERY.COM

@ADELSHEIM
@ALEXANAWINERY

AVA
Willamette Valley

WINEMAKERS
Gina Hennen, Tresider Burns

VINEYARDS
Boulder Bluff Vineyard (50%)
Gran Moraine Vineyard (50%)

BLOCKS
Block One Boulder Bluff
Block 4-15 Gran Moraine

CLONES
95, 548

SOIL TYPES
Marine Sedimentary, Volcanic

ALCOHOL
12.6%

BOTTLING
February 8, 2023

HARVEST
September 26, 2022

BETHEL HEIGHTS & LINGUA FRANCA



LOT #58 | 60 BOTTLES {5 CASES}

2022 CHARDONNAY | *C'est Ça*

THE WINE. As neighbors across the hill in Eola-Amity, Ben and Thomas have tasted together often enough over the years to realize they share a single vision of what the quintessential Eola-Amity Chardonnay should be, and how to make it so. Plant the vines in the best spots (not always giving way to Pinot noir), farm organically with minimum intervention, hand harvest the fruit just on the cusp of ripeness to maintain acidity and low alcohol and to make sure the delicate nuances of the site are not overshadowed by overly lush fruit. In the winery the same single vision: whole cluster press, ferment in wood, full malolactic, seventeen months on the lees.

The 2022 vintage with its cool summer and long hang time into October presented the perfect conditions to make Chardonnay just the way they like it, so Ben and Thomas were inspired to make a collaborative wine for the Auction. They sat down one morning with many beakers of various components from their two estate vineyards, expecting a long slog tasting through all various possible blends. But the wine surprised them by coming together almost immediately and almost without their intervention. "C'est ça," said Thomas. "That's it," said Ben. And there you have it: the essential Eola-Amity Chardonnay.

THE WINERIES. Lingua Franca is a 66-acre estate winery on the east side of the Eola-Amity Hills, founded in 2012 by world-renowned Master Sommelier Larry Stone with the intention to create wines of distinction using low-impact, organic and biodynamic principles. Famed Burgundian winemaker Dominique Lafon and protégé Thomas Savre joined Larry in 2015. Drawing from each of their unique backgrounds, the newly-formed oenological dream team adopted the name "Lingua Franca" as a nod to the universal language meant to bring people from diverse backgrounds together to share a moment of pleasure.

Bethel Heights is a multi-generational family estate vineyard established by the Casteel family in 1977 on the west side of the Eola-Amity Hills. Ben Casteel became Bethel Heights' second generation winemaker in 2006. Geologically complex hillside soils, direct impact from Aeolian winds, and organically farmed mature vines, all conspire together to produce highly energized wines with firm backbones, depth of character, and distinctive personalities.

BETHELHEIGHTS.COM
LINGUAFRANCA.WINE

@BETHELHEIGHTSVINEYARD
@LINGUAFRANCWINES

AVA
Eola-Amity Hills, Willamette Valley

WINEMAKERS
Thomas Savre and Ben Casteel

VINEYARDS
Lingua Franca Estate (50%)
Justice Vineyard (50%)

CLONES
76, 95, 548

ALCOHOL
13.0%

BOTTLING
January 2024

HARVEST
September 30, 2022 - October 6, 2022



SOLÉNA ESTATE & DOMAINE DIVIO

SOLÉNA *Domaine Divio*

LOT #59 | 60 BOTTLES {5 CASES}

2022 CHARDONNAY | *Francophilia*

THE WINE. *Francophilia Chardonnay is the collaboration between Laurent Montalieu of Soléna Estate and Bruno Corneaux of Domaine Divio. Their partnership in this wine is the expression of their French approach with Chardonnay grapes. They express the brightness of the fruit and the freshness and complexity from the soil of Domaine Danielle Laurent Vineyard and Clos Gallia Vineyard. Bruno and Laurent believe that Chardonnay should evoke emotions, purity, elegance and mineral complexity, achieved through length, structure and vibrant acidity. Their collaboration with Francophilia is an expression of friendship, French heritage, and Oregon terroir.*

THE WINERIES. *Laurent Montalieu, winemaker of Soléna Estate, and Bruno Corneaux, winemaker of Domaine Divio, both French natives, have been friends since they met in the Willamette Valley 25 years ago. They've also worked together for more than a decade, overseeing viticulture and winemaking at Northwest Wine Company. Both winemakers have a passion for geology and share the idea that quality starts in the vineyard. Respect for the land and the sense of place is always reflected in their wines.*

AVA

Willamette Valley

WINEMAKERS

Laurent Montalieu and

Bruno Corneaux

VINEYARDS

Domaine Danielle Laurent (50%)

Clos Gallia (50%)

ALCOHOL

13.1%

BOTTLING

November 18, 2023

HARVEST

October 16, 2022 - October 20, 2022

SOLENAESTATE.COM | DOMAINE DIVIO.COM

@SOLENAESTATE | @DOMAINE DIVIO

MARTIN WOODS



LOT #60 | 60 BOTTLES {5 CASES}

2022 CHARDONNAY | *Salt & Sun*

THE WINERY. *Martin Woods (the woods and the winery) is hidden in the oak-forested foothills of Oregon's Coast Range, within the cool-climate McMinnville AVA, Willamette Valley. Martin Woods is both the home and winery for winemaker/vigneron Evan Martin, who has been driven by a passion since 2009 for discovering the most compelling terroir in Oregon.*

Elegant Pinot noir and Chardonnay are the focus of the portfolio, but Riesling, Gruner, Gamay, Cabernet Franc and Syrah are more than proving extremely exciting for exploration. Evan's small team farms according to sustainable, holistic principles, and the growers he partners with are of the same mindset. The winemaking methods are delicate and natural, but of greatest importance is that a Martin Woods wine promotes the classic qualities of purity, balance, complexity and fine structure that can only result from great terroir combined with wholehearted dedication to art and craft. Above all, it is the hope that the wines evoke a consistent and inspiring sense-of-place, an authentic Oregon voice.

WINEMAKER

Evan Martin

BOTTLING

May 6, 2024

HARVEST

October 2022

MARTINWOODSWINERY.COM

@MARTIN_WOODS_WINERY

FULLERTON WINES



LOT #61 | 60 BOTTLES {5 CASES}

2022 CHARDONNAY | *SunnyC*

THE WINE. *SunnyC* is made of 100% Willamette Valley Chardonnay, naturally occurring sugars, acids, vitamins and minerals. Deliciously tangy, unique, and full of flavor. Boldly original, a one-of-a-kind flavor for a one-of-a-kind you. Unleash the power of the sun, *SunnyC*.

THE WINERY. Fullerton Wines explores the rich and varied AVAs of Oregon by expressing the distinct personality of each vineyard and vintage in the bottle. Founded in the Fullerton family garage in 2011, the winery is a deeply personal family collaboration. The winemaking operation is now based in Corvallis, with a small estate vineyard in Beaverton, and a tasting room in Portland. Producing mainly Willamette Valley Pinot noir and Chardonnay, the family also works with different grape varieties from some of Oregon's other cherished viticultural areas.

AVA
Willamette Valley

WINEMAKER
Alex Fullerton

VINEYARDS
Nemarniki (50%)
Pamar (50%)

CLONES
76, 95, 96, 548, Espiguette

SOIL TYPES
Marine sedimentary and loess

ALCOHOL
12.5%

BOTTLING
March 25, 2024

HARVEST
September 27, 2022 - October 1, 2022

FULLERTONWINES.COM

@FULLERTONWINES

GC WINES



LOT #62 | 60 BOTTLES {5 CASES}

2022 CHARDONNAY | *The Sea and the Volcano*

THE WINE. This wine is from two vineyards in the Eola-Amity Hills that have very different soil profiles and micro climates. Pearlstad Vineyard sits on the west side of the Eola-Amity Hills, where the soil is composed of ancient seabed and the cool ocean winds lash at the grapes in the summer evenings, giving us wines with citrusy fruits, tension, and focus. Vivid Vineyard is on the east side of the hills where the soil is deeper and volcanic in composition. While it is still cool and windy here, the site produces more of a lush and round style of wine, with more golden fruit.

THE WINERY. Working in restaurants brought me to wine, and my past work guides our direction in the vineyards, cellar and tasting room. We aim to produce wines of purity, energy and place--wines that showcase the land more than our hands.

AVA
Eola-Amity Hills, Willamette Valley

WINEMAKER
John Grochau

VINEYARDS
Pearlstad Vineyard (50%)
Vivid Vineyard (50%)

SOIL TYPES
Marine Sedimentary and Volcanic

ALCOHOL
12.5%

BOTTLING
February 22, 2024

HARVEST
October 4, 2022 - October 12, 2022

GROCHAUCELLARS.COM

@GC_WINES



CRISTOM VINEYARDS



LOT #63 | 60 BOTTLES {5 CASES}

2022 CHARDONNAY | *Subduction Seduction*

THE WINE. *The geological drama of the Willamette Valley began when the Juan de Fuca Plate subducted beneath the North American plate, eventually uplifting the basalt soils that helped create the longitudinal Eola-Amity Hills AVA. This seductively salivating blend from the east-facing Seven Springs hillside vineyard and the west-facing Royer hillside vineyard captures the tension and generosity of Chardonnay from the Eola-Amity Hills. The southwestern slope, directly cooled by the Ocean breezes, contributes riveting acidity and nervousness, while the southeastern slope bestows sun-kissed richness and texture. A fusion of earth's alchemy, terroir, stewardship, and craftsmanship, this Chardonnay is vibrant, complex, and alluring.*

THE WINERY. *For more than 30 years, Cristom Vineyards has crafted distinguished wines that honor individual sites and traditional techniques. Established in 1992 by the Gerrie family and now steered by the second generation, we steward five worldclass vineyards on a windswept, east-facing volcanic slope in Oregon's Eola-Amity Hills.*

Driven by a 100-year vision, our 240-acre estate is farmed using biodynamic and organic methods that reveal the purest expression of terroir. The dedicated winegrowing team, led by Owner and Winegrower Tom Gerrie, blends site-specific wisdom with revered winemaking traditions — low yields, whole-cluster and native yeast fermentations — crafting elegant, structured, and dynamic wines.

CRISTOMVINEYARDS.COM

@CRISTOMWINE



AVA
Eola-Amity Hills, Willamette Valley

WINEMAKERS
Daniel Estrin
Winemaker & Vineyard Manager

Chris Butler
Assistant Winemaker

VINEYARDS
Seven Springs Vineyard (60%)
Royer Vineyard (40%)

CLONES
76, 95

SOIL TYPE
Volcanic (Basalts)

ALCOHOL
13.0%

BOTTLING
January 15, 2024

HARVEST
October 3, 2022 - October 7, 2022

BRYN MAWR VINEYARDS



LOT #64 | 60 BOTTLES {5 CASES}

2022 CHARDONNAY | *The Arrangement*

THE WINE. *This wine is the culmination of Bryn Mawr's dedicated focus on the valley's most electric grape, Chardonnay. It was among the first varieties planted on our Estate, with just a 1/4 acre of intermixed clones. That 30-year-old field blend continues to provide inspiration for our Chardonnay program today.*

The Arrangement is a tribute to our winemaker, Rachel Rose, and the astonishing Chardonnays she crafts through expansive and meticulous winemaking, employing a dizzying array of techniques to expand upon nature's composition. She starts building the moment the grapes are harvested, with part of the fruit destemmed, part left whole cluster, and part tread heavily by foot and left to oxidize before going to the press. The juice is sent to a myriad of vessels; French oak puncheons and large sandstone amphorae each add their distinct notes. Fermentation is spontaneous, slow, and delicately guided, each vessel blooming into its own biochemical microcosm. After malolactic fermentation and sur lie aging, she selects wines to blend back into a large steel vessel, where it settles into something superlative. Balancing highs with lows and precision with breadth, she achieves harmony, a pure and singular tone of complementary frequencies. This Chardonnay is simply elegant yet infinitely complex, a stunning arrangement built upon nature's composition.

THE WINERY. *Bryn Mawr Vineyards was purchased as a tiny garagiste winery by the Lauer family in 2009. They partnered with rising winemaker and viticulturalist Rachel Rose to develop a world-class operation on a precipitous, high-elevation Estate. Rachel has an adaptive and experimental approach, bridging the gap between natural and traditional winemaking to elevate the dynamic character of each vintage. She farms without tilling, focusing on complete site health and promoting natural, self-sustaining ecosystems between plant, soil, and microbial life. Her primary winemaking philosophy focuses on minimal use of SO₂, judicious use of new French oak, and continual experimentation in the cellar.*

BRYNMAWRVINEYARDS.COM

@BRYNMAWRVINEYARDS



AVA
Eola-Amity Hills, Willamette Valley

WINEMAKER
Rachel Rose

VINEYARD
Estate - Bryn Mawr Vineyard

SOIL TYPES
Ritner & Nekia

ALCOHOL
12.2%

BOTTLING
February 1, 2024

HARVEST
October 2, 2022 - October 5, 2022

ROOTS WINE CO.

LOT #65 | 60 BOTTLES {5 CASES}

2022 CHARDONNAY | *a thing to make you go hmmm.*

THE WINE. Silky lemon curd aromas of lemongrass and tangerine. A blend of skin contact and fresh press. Native yeast and black chardonnay (no SO2 until post malo). Things to make you go hmmm

THE WINERY. Just like C + C Music Factory, we make things to make you hmmm.



AVA

Laurelwood District, Willamette Valley

WINEMAKER

Christian Berg

VINEYARD

Ninebark Vineyard

CLONES

76

SOIL TYPES

Saum, Jory, silty loam

ALCOHOL

13.2%

BOTTLING

March 1, 2024

HARVEST

September 15, 2022



ROOTS.WINE

@ROOTSWINECOMPANY

WALTER SCOTT

LOT #66 | 60 BOTTLES {5 CASES}

2022 CHARDONNAY | *The Prism Effect*

THE WINE. Crowning the Eola-Amity Hills at 1100 feet, Koosah Vineyard is named after the Chinook word for Heavenly Sky. The vineyard is defined by steep slopes, rocky soils, and a biodiverse, holistic ecosystem. Our favorite barrel of Koosah Chardonnay rested on its lees for 18 months. This extended aging allowed the wine's aromatics to bloom, resulting in a floral kaleidoscope of apple blossom, lime leaf, and honeysuckle. As the flavors on the palate come into focus, crunchy white nectarine and oyster shells are illuminated. Crystalline acidity beams down the palate like a light through a prism; exploding with a brilliant finish.

THE WINERY. Ken Pahlow and Erica Landon launched Walter Scott in 2008, drawing from their extensive experience in Oregon's wine industry. Ken's 18 year tenure in winemaking and sales honed his production and marketing focus, while Erica's sommelier background and wine education expertise complemented their vision. After beginning production in the corner of Patricia Green Cellars, they later moved operations to Evening Land. Then in 2012, they settled into their home in the Eola-Amity Hills. Today, Walter Scott sources fruit from exceptional vineyards, primarily from the Eola-Amity Hills AVA, and strives to make the best Chardonnay in the world.

WALTERSCOTTWINES.COM

@WALTERSCOTTWINES



WALTER SCOTT

AVA

Eola-Amity Hills, Willamette Valley

WINEMAKER

Ken Pahlow

VINEYARD

Koosah Vineyard

ALCOHOL

13%

BOTTLING

June 1, 2024

HARVEST

October 15, 2022

PINOT NOIR FINALE | #67 - 81

Raise your paddles for the grand finale, which will end with a lot from the incoming Auction Chair: Joshua Wludkya from Lingua Franca Lot #81.

We will see you next year on May 15, 2025!



ARGYLE

LOT #67 | 60 BOTTLES {5 CASES}

2022 PINOT NOIR | *Brilliant Eye*

THE WINE. *In celebration of Argyle's emphasis on supporting our ever-present opportunities to empower, this wine embodies our dedication to the people that are dedicated to our vines. Named for the common phrase heard in our vineyards – Ojo Brilloso – loosely translating to 'good eye', this wine represents collaboration and empowerment between our vineyard foremen and winemaker. Each foreman, graduate of the AHIVOY program, took part in working with Nate Klostermann in selecting the specific blocks and final blend from the respective vineyard they carefully watch over. As a one-of-a-kind wine introduced solely for this auction, we are proud to introduce Brilliant Eye.*

THE WINERY. *As Oregon's original sparkling house, founded in 1987, Argyle quickly stood out as a study in contrasts — honoring the deep traditions of wine and embracing innovation; proud to be Oregonian and pulling knowledge from winemakers around the world; cultivating camaraderie and offering mentorship to newer winemakers. When common knowledge said a winery could produce either great still wines or great sparkling, Argyle said, "Why not both?" And answered that question with acclaimed Pinot noir, Chardonnay, Riesling and sparkling wine. Today, Argyle remains the essential Oregon winery by continuing to embrace the contradictions that make us strong.*

AVA
Willamette Valley

WINEMAKER
Nate Klostermann

VINEYARDS
*Lone Star Vineyard (33%)
Spirit Hill Vineyard (33%)
Knudsen Vineyard (33%)*

SOIL TYPE
Red Jory

ALCOHOL
13.8%

BOTTLING
February 27, 2024

HARVEST
October 10, 2022 - October 13, 2022

ARGYLEWINERY.COM

@ARGYLEWINERY



HYLAND ESTATES



LOT #68 | 60 BOTTLES {5 CASES}

2022 PINOT NOIR | *We Stopped Counting After 50*

THE WINE. Forged in the fires of the great volcanic eruptions eons before we arrived on this land, the essence of time is captured in the bottle. The great Oregon landscape lies before the sleeping giant of the historic vineyard overlooking the picturesque vistas of a rough and rugged Oregon traversed by people from all walks of life. Since 1971 the Hyland Vineyard has sat aloft its McMinnville perch. From the mountains to the valley, to the rivers and beyond, this wine embodies its surroundings and influence of time. Our team crafted this unique wine to reflect the graceful maturity of the vineyard, the thoughtfulness of the farming, and the restraint of the winemaking. The 2022 lot was kept in barrel over vintage with exceptional results and is a classic version of old vine Coury Clone Pinot noir.

THE WINERY. Hyland Vineyard is one of Oregon's most historic and storied vineyards. Planted in 1971, the vineyard now stretches over 185 acres among the picturesque foothills of Oregon's Coast Range. Untouched, unmoved and self-rooted, Hyland's gnarly old vines remain entrenched in the red volcanic Jory soil from their bird's-eye view overlooking the McMinnville foothills

HYLANDESTATESWINERY.COM

@HYLANDESTATES



ARCHERY SUMMIT

Archery Summit

LOT #69 | 60 BOTTLES {5 CASES}

2022 PINOT NOIR | *Above & Below*

THE WINE. The Red Hills Vineyard, one of our five Dundee Hills estates, rests just beside our Red Hills Vineyard House with commanding views of the Willamette Valley, and is aged in our extensive quarter-mile cave system. This vineyard is renowned for its exclusive Pinot Noir clones, known for their distinctively rich and robust flavors. Among our most coveted offerings, the wine from this vineyard embodies a beautifully fresh fruit profile, a stunning testament to the expressive, brick-red hues derived from the cherished Jory soils.

THE WINERY. In 1993, Archery Summit set its sights on creating wines of real purpose in the Willamette Valley. Since, the Dundee Hills winery has helped establish the region as the cradle of cooler-climate American wine. Winemaker Ian Burch and his team achieve bar-raising wines by way of earned instincts—the familiarity gained from many shared vintages, tending sites they know personally. Thirty years on, Archery Summit proudly considers itself the stewards of someplace truly special, with unparalleled potential. The winegrowing stresses organic and biodynamic farming, with zero tolerance for herbicide, nurturing the land and yielding a rousing lineup of estate Pinot Noirs.

ARCHERYSUMMIT.COM

@ARCHERYSUMMIT



AVA
McMinnville, Willamette Valley

WINEMAKER
Anne Sery

VINEYARD
Hyland Vineyard

BLOCKS
1D, 1F, 9

CLONE
Coury Clone

SOIL TYPE
Jory / Nekia Volcanic

ALCOHOL
14.3%

BOTTLING
Spring 2024

HARVEST
October 16, 2022 - October 17, 2022

AVA
Dundee Hills, Willamette Valley

WINEMAKER
Ian Burch

VINEYARD
Red Hills Estate Vineyard

SOIL TYPE
Volcanic Jory

ALCOHOL
13.5%

BOTTLING
March 15, 2024

HARVEST
October 6, 2022

ALEXANA ESTATE

LOT #70 | 60 BOTTLES {5 CASES}

2022 PINOT NOIR | *Sublimation – The Standout*

THE WINE. A rare early season freeze decimated the young Pinot noir shoots at Alexana Estate, leaving the 2022 vintage on the precipice of disaster.

Incredibly, these hardy 20-year-old vines rejuvenated themselves through the cold spring and by summer, the aura of doom passed as a beautiful crop took hold. Each bountiful cluster that remained slowly transformed into pristine fruit. As the wines aged, and we listened to the story the vintage had to tell, we learned that sublimation creates incredibly delicate wines.

In our quest to find a more powerful representation of the vintage, two barrels from our oldest vines would compel us to wait a bit longer—the longest elevage in Alexana history—as they continued to write the tale of resurrection from destruction.

THE WINERY. In 2005, Dr. Revana discovered a piece of land tucked along the northern edge of the Dundee Hills. A site that would become Alexana Estate, this 55-acre vineyard has twice been recognized in Wine Spectator's 'TOP 100 Wines'.

A vineyard of remarkable geological diversity, Alexana Estate encompasses 18 unique soil types. Small blocks of Pinot noir, Chardonnay and a singular block of Pinot gris are planted along geological boundaries.

Winemaker Tresider Burns brings an intuitive approach to each block, allowing every parcel to tell its story through discrete, small-lot fermentations.

ALEXANAWINERY.COM

@ALEXANAWINERY



ALEXANA

AVA

Dundee Hills, Willamette Valley

WINEMAKER

Tresider Burns

VINEYARD

Alexana Estate

ALCOHOL

13.7%

BOTTLING

February 28, 2024

HARVEST

October 3, 2022 - October 10, 2022

ZENA CROWN VINEYARD

LOT #71 | 60 BOTTLES {5 CASES}

2022 PINOT NOIR | *The Rizz*

THE WINE. *Can a vineyard have the rizz? Probably not. But this wine might help elevate yours.*

THE WINERY. *Since the 2013 vintage, Zena Crown Vineyard has crafted site specific Pinot Noirs under its namesake - capturing the vineyard's changing moods and expressions just as if it were a living, breathing thing. As Winemaker Shane Moore adapts to its rhythms and natural oscillations, he seeks to explore and manifest the singular voice of this special piece of land, in accordance with the remote and rugged beauty of the Eola-Amity Hills.*

ZENACROWN.COM

@ZENACROWN



ZENA CROWN VINEYARD

AVA

Eola-Amity Hills, Willamette Valley

WINEMAKER

Shane Moore

VINEYARD

Zena Crown Vineyard

ALCOHOL

13.2%

BOTTLING

April 4, 2024

HARVEST

October 8, 2022 - October 15, 2022

ELK COVE VINEYARDS

LOT #72 | 60 BOTTLES {5 CASES}

2022 PINOT NOIR | *Morpheus*

THE WINE. *Our original Pinot noir vines planted in 1974 were not true clones and showed considerable variation in the field. We dreamed of an ideal cluster morphology, selecting for the trinity of small clusters, small berries and even ripening to improve the lineage of our grapevines. We followed Morpheus, the fashioner of a matrix – of terroir, grapevines, and humans – to create a neo-classical Pinot noir style. There is a difference between knowing the vines and walking the vines. We grow Pinot noir because we choose to. There is no turning back.*

THE WINERY. *This Pinot noir is from our original estate single vineyards, La Bohème and Roosevelt. In 1985, Pat and Joe Campbell took cuttings from their very best vines to plant La Bohème with their 16-year-old son Adam. Eight years later, the family took cuttings from their best vines at La Bohème to plant Roosevelt. This Massale selection gave us two vineyard sites that remain our very best, with more silky texture from La Bohème and more intensity from Roosevelt. This wine is made from these old vines, never before combined as a stand-alone blend in our 50 years of viticulture.*

ELKCOVE.COM

@ELKCOVE

ELK COVE VINEYARDS

AVA

Yamhill-Carlton, Willamette Valley

WINEMAKER

Adam Campbell

VINEYARDS

La Bohème (50%)

Roosevelt (50%)

SOIL TYPE

Marine Sedimentary

ALCOHOL

14.2%

BOTTLING

August 3, 2023

HARVEST

October 18, 2022 - November 9, 2022



ANTICA TERRA

LOT #73 | 60 BOTTLES {5 CASES}

2022 PINOT NOIR

THE WINE. *This singular selection represents the Antica Terra Vineyard in its purest form. Our inspiration came from Burgundy, where small producers would have often only one barrel from a small plot of Grand Cru vines and couldn't bear to top it up with village level wine. They would drop small rocks into the barrel to displace the wine and eliminate the headspace. We waded through Alder Creek and picked buckets of rocks from the clear, newly-melted glacial runoff. This barrel was topped with these rocks and thus remains the only wine made purely and wholly from our estate.*

THE WINERY. *Antica Terra is a high-elevation vineyard located on a rocky hillside in the Eola-Amity Hills AVA. The first vines were planted here in 1989 in a clearing within the native oak savanna. The geology of the site is extremely unusual; in this place, the remains of a far older prehistoric seabed rise to the surface, leaving the vines to struggle, without topsoil, amongst a fractured mixture of sandstone sown with fossilized oyster shells*

ANTICATERRA.COM

@ANTICA_TERRA

antica terra

AVA

Willamette Valley

WINEMAKERS

Maggie Harrison & Mimi Adams

ALCOHOL

14.0%

BOTTLING

April 1, 2024

HARVEST

September 10, 2022 - October 10, 2022

PENNER-ASH WINE CELLARS



LOT #74 | 60 BOTTLES {5 CASES}

2022 PINOT NOIR | *Holy Trinity*

THE WINE. Our 2022 Holy Trinity Pinot Noir represents the union between three preeminent clones – Pommard, Wädenswil and Dijon 777. Sourced from two prized neighboring vineyards, Fairsing and Ridgecrest, this wine has layers of delicate oak, cocoa and crushed rose petals. A silky entry, fine grain tannin, and elegant freshness fill the palate providing a lasting finish.

THE WINERY. In 1998, Lynn and Ron Penner-Ash founded Penner-Ash Wine Cellars in the Northern Willamette Valley's Yamhill-Carlton sub-AVA. The pair built their LIVE-Certified sustainable gravity-flow winery surrounded by a 15-acre Estate Vineyard. The building seems to spring from the land itself – a reflection of the values, spirit and winemaking philosophy of Penner-Ash. Today, Winemaker Kate Ayres has been entrusted to carry forward the longstanding relationships that Lynn has fostered over the past twenty years. In the winery, Kate and her winemaking team focus on small-lot indigenous yeast fermentation with extended cold soaks to extract a rich, fruit-focused, textured mouth feel. Each lot is vinified separately then artistically crafted into single vineyard wines, as well as blended to create the flagship Penner-Ash wine, the Willamette Valley Pinot Noir.

PENNERASH.COM

@PENNERASHPINOT



STOLLER FAMILY ESTATE



LOT #75 | 60 BOTTLES {5 CASES}

2022 PINOT NOIR | *Deadman's Hill*

THE WINE. Legend has it that in 1947, one of Bill Stoller's uncles found the body of an unknown man leaning against a tree on our property. Some say he was an outlaw; others say he was an adventurer caught with the wrong man's wife. Some say he was no one at all. Nevertheless, this Pinot Noir is composed of three proven sections from our estate vineyard on what is privately called "Dead Man's Hill."

An exclusive assemblage of two upper elevation sections of Pommard, planted almost 30 years ago, fermented with a section of Wädenswil planted 27 years ago, this Pinot Noir shows power and finesse with a vein of red fruit that is a defining characteristic of Dead Man's Hill. Decades of experience vinifying these sections gives our winemaking team the confidence to co-ferment the three sections in a single vessel for the ultimate integration and marriage of each section's unique terroir. Blending wines at the stage of harvest is the winemaking equivalence of Babe Ruth calling his shot at the World Series in 1932. The wine was aged 12 months in 60% new oak barrels from Francois Freres and Marcel Cadet before being racked into a stainless-steel tank to harmonize for an additional two months before bottling.

THE WINERY. The family established the property in 1943 and the vineyard 50 years later. Over the last 30 years, we have patiently transformed the 400-acre property into the largest contiguous vineyard in Oregon's Dundee Hills. We control every step of the winegrowing and winemaking process, from pruning to bottling and everything in between. The result is award-winning wines that are balanced, complex, and consistently exceptional.

Much has changed from the original Stoller family farm, but two things remain constant: our pioneering spirit and commitment to our farm. We continuously seek new ways to refine and protect our legacy, so that it can thrive for generations to come. Our winery was the first in the world to receive LEED Gold certification, attesting that our winery is sustainably built and environmentally friendly. We are honored to be ranked on the USA Today 10Best Tasting Rooms Reader's Choice poll in 2016, 2018, 2019, 2020 2021, 2022, and 2023, Oregon's Most Admired Winery by the Portland Business Journal for eight consecutive years, and a 2023 Top Work Places winner by The Oregonian.

STOLLERFAMILYESTATE.COM

@STOLLERWINE



BETHEL HEIGHTS

LOT #76 | 60 BOTTLES {5 CASES}

2022 PINOT NOIR | *Succession*

THE WINE. *As our 45-year-old own-rooted legacy blocks of Pinot noir gradually succumb to old age and other pests, we are casting our eyes about to spot the up-and-coming stars of the new era at Bethel Heights. Candidates are popping up everywhere as our second-generation vines come of age, but one pair that plays particularly well together has lately been pulling ahead - an ingenue block of 777 PN at Lewman Vineyard, just 20 years old in 2022, and the elder block of 114 PN at Justice Vineyard, 23 years old in 2022. Until now these two have only played in the chorus of other estate wines. This unique five-case lot is their first chance to take center stage, alone together. As with favored children everywhere, this choice may embody a self-fulfilling prophecy.*

THE WINERY. *Bethel Heights is a multi-generational family estate vineyard established by the Casteel family in 1977 on the west side of the Eola-Amity Hills. Ben Casteel became Bethel Heights' second generation winemaker in 2006. Geologically complex hillside soils, direct impact from Aeolian winds, and organically farmed mature vines, all conspire together to produce highly energized wines with firm backbones, depth of character, and distinctive personalities.*

BETHELHEIGHTS.COM

@BETHELHEIGHTSVINEYARD



AVA

Eola-Amity Hills, Willamette Valley

WINEMAKER

Ben Casteel

VINEYARDS

Lewman Vineyard

Justice Vineyard

BLOCKS

Lewman 777

Justice 114

ALCOHOL

13.3%

BOTTLING

November 20, 2023

HARVEST

October 12, 2022



DOMAINE SERENE

LOT #77 | 60 BOTTLES {5 CASES}

2022 PINOT NOIR | *Dundee Hills Pinnacle*

THE WINE. *Selected from our most esteemed estate vineyards atop the Dundee Hills, this wine showcases the amazing texture and complexity that are the hallmarks of this appellation so dear to our hearts.*

THE WINERY. *In 1989, Grace and Ken Evenstad settled in the Willamette Valley, with a mission to produce world-class Pinot noir. After 30 years, the Evenstads not only achieved that goal but have garnered over 250 scores of 95+ points by major critics and publications such as Decanter, Wine Enthusiast, Wine Spectator, and International Wine Report, and earned Domaine Serene the title of "Most Awarded Winery in the World" by Decanter in 2020. Grace Evenstad continues to be focused on producing outstanding quality wines through continuous improvement and a commitment to extremely high internal standards.*

DOMAINESERENE.COM

@DOMAINESERENE

DOMAINE SERENE

AVA

Dundee Hills, Willamette Valley

WINEMAKER

Michael Fay

SOIL TYPE

Jory soil

ALCOHOL

13.9%

BOTTLING

October 20, 2023

HARVEST

October 3, 2022



PRINCE HILL VINEYARDS

LOT #78 | 60 BOTTLES {5 CASES}

2022 PINOT NOIR | *Ascension*

THE WINE. *At the gateway to the Dundee Hills, our eponymous vineyard reaches heights over 750 feet. Its red Jory soils and south- and east-facing slopes consistently deliver fruit of unparalleled richness and complexity. Blended with a single partner vineyard, Thoma, to elevate the red-fruit character of Pinot noir from this famed growing region, the resulting wine unfolds in nuanced layers. "Ascension," our single barrel Pinot noir selection, was hand-chosen by our winemaking team to showcase the very best of the Dundee Hills and the breathtaking 2022 vintage.*

THE WINERY. *Prince Hill Vineyards personifies decades' dedication to craftsmanship and this premier growing region. As the trusted stewards of this acclaimed site since 2017, the Duncan Family sustainably farms the red Jory soil atop the pinnacle of Dundee.*

PRINCE HILL

AVA

Dundee Hills, Willamette Valley

WINEMAKERS

*Justin Hirigoyen
Director of Winemaking*

*Chris Burrough
Associate Winemaker*

VINEYARD

Prince Hill and Thoma

SOIL TYPE

Jory

ALCOHOL

13.4%

BOTTLING

December 6, 2023

HARVEST

September 30, 2024 - October 15, 2022



ADELSHEIM VINEYARD

LOT #79 | 60 BOTTLES {5 CASES}

2022 PINOT NOIR | *Sometimes it Snows in April*

THE WINE. *This wine comes from our estate Ribbon Springs Vineyard, where Winemaker Gina Hennen selected her perennial favorite corner of the vineyard, block one. This site is at the crest, 600 feet in elevation, where you can see the varied topography of our prime acreage rolling into the rest of the Ribbon Ridge AVA. Created only for WVWA, this singular bottling is a first. Luscious cherry and fresh mineral character prevail, reflective of marine sedimentary soils.*

Another notable first? Snow graced this vineyard in April of this vintage. An incredibly rare event that reminded Gina of a song by Prince: "Sometimes it snows in April... all good things, they say, never last..." Just like the snow and this wine, it won't last forever.

THE WINERY. *Adelsheim Vineyard was established in 1971 with a curious spirit and driven by relentless pursuit of world-class winemaking in an undiscovered wine region, the Chehalem Mountains. Over five decades later, they have played an instrumental role in nearly every aspect of the Oregon wine story and continue to be one of the region's most respected wineries. Winemaker Gina Hennen strives for an authentic expression of Pinot noir and Chardonnay from the richly diverse soil types, elevations, and exposures from eight estate vineyards. Adelsheim is proudly Chehalem Mountains' first winery, woman-owned, women-led, and certified sustainable.*

ADELSHEIM.COM

@ADELSHEIM

ADELSHEIM

AVA

Ribbon Ridge, Willamette Valley

WINEMAKER

Gina Hennen

VINEYARD

Ribbon Springs Vineyard

BLOCK

One

CLONE

Pommard

SOIL TYPE

Marine Sedimentary

ALCOHOL

14.0%

BOTTLING

August 14, 2023

HARVEST

October 13, 2022



SOLÉNA ESTATE

LOT #80 | 60 BOTTLES {5 CASES}

2022 PINOT NOIR | *L'élégance*

THE WINE. *L'élégance* is a wine that exemplifies artistry and design. The grapes were grown on Soléna Estate's home vineyard, Domaine Danielle Laurent. Nestled in the Yamhill-Carlton AVA, this site benefits from biodynamic farming practices that enrich the life of our soil. To craft this unique wine, Laurent selected three different blocks from the vineyard, each showcasing distinct characteristics. Together they create a beautifully orchestrated symphony of flavors—an elegant expression of Willamette Valley Pinot noir.

THE WINERY. Soléna is a combination of Solana and Soleil, celebrating the sun, the moon, and cycles of life. We launched in 2000 with our 80-acre estate—now the Domaine Danielle Laurent Vineyard. Furthering their successful careers in Oregon wine, Laurent Montalieu and Danielle Andrus gifted this vineyard to each other for their wedding, and began making wine called Soléna after their daughter. Soléna Estate showcases the beauty of terroir in our site-specific wines; from our estate vineyards and iconic sites around the Northwest. We're known for quality ageable Pinot noir, Chardonnay, Pinot gris, and Cabernet Sauvignon.

SOLENAESTATE.COM

@SOLENAESTATE

SOLÉNA

AVA

Yamhill-Carlton, Willamette Valley

WINEMAKER

Laurent Montalieu

VINEYARD

Domaine Danielle Laurent

SOIL TYPE

Marine Sedimentary

ALCOHOL

13.4%

BOTTLING

November 18, 2023

HARVEST

October 15, 2022

LINGUA FRANCA

LOT #81 | 60 BOTTLES {5 CASES}

2022 PINOT NOIR | *Automne Tardif*

THE WINE. *A late harvest with a magical fall brought excellent fruit and some of the most beautiful wine Lingua Franca ever made.*

THE WINERY. *Lingua Franca represents a fine tradition of bringing people of different backgrounds to common ground, sharing conversation and enjoyment. Inspired by an extraordinary vineyard site in the Eola-Amity Hills of the Willamette Valley and following low-impact, organic, and biodynamic farming principles, we planted our estate vineyard with different combinations of rootstock and budwood to best reflect the varying soil conditions, resulting in fruit of unparalleled purity and elegance.*

LINGUAFRANCA.WINE

@LINGUAFRANCAWINES



AVA

Eola-Amity Hills, Willamette Valley

WINEMAKER

Thomas Savre

VINEYARD

Larry Stone Vineyard

SOIL TYPE

Volcanic

ALCOHOL

13.5%

BOTTLING

February 20, 2024

HARVEST

October 10, 2022 - October 20, 2022





SAVE THE DATE!

MAY 15, 2025

*The Auction will be held in the spring
next year. Please make plans to join us!*

willamettewines.auction

@wvines @wvauction #wvauction