

BARBÉ URBAIN gallery presents:

ZWRT

17/05 - 23/06/2019

A selection of black & white works on different forms of media from 1964 - 2019
by 18 different artists from 7 different countries.

With works by:

Stien Bekaert - Evy Bosman - Hugo De Clercq - Benni Efrat - Manor Grunewald - Dieter Lannoo
Sofie Middernacht & Maarten Alexander - Shinji Murakami - A.R. Penck - Xavier Robles de Medina
Gail Stoicheff - Stef Van Looveren - Simon Van Parys - Tamara Van San - Stan Van Steendam - Adriaan Verwée - Andy Wauman

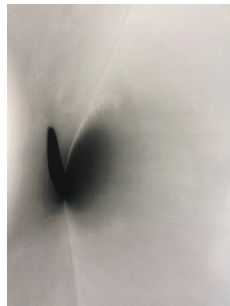




Hugo De Clercq

'Trique' (1973)

oil on linen
150 x 120 cm



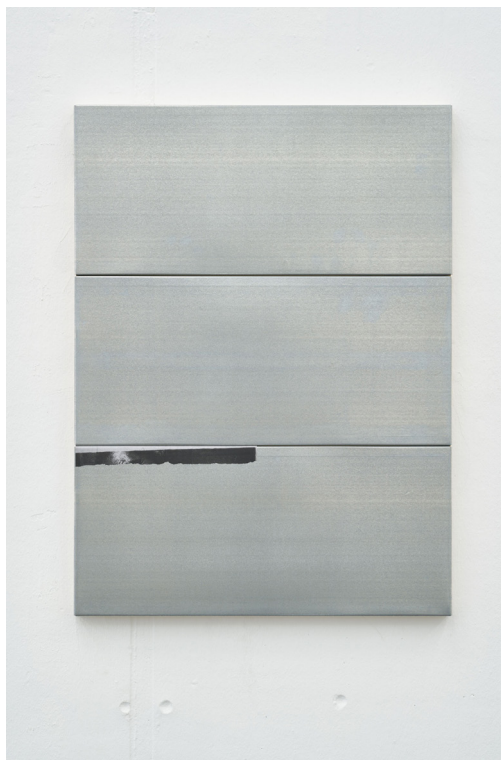
Evy Bosman

'Total Eclipse' #3, #1, #2 (2019)

Giclee Fine Art Print William Turner 310gr.

24 x 18 cm

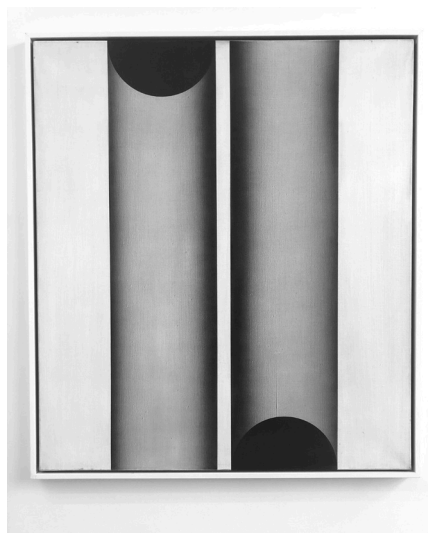
ed. /3



Manor Grunewald

'Untitled' (2017)

wood, metal and print on paper
80 x 60 cm



Hugo De Clercq

'Untitled' (1968)

oil on canvas, framed
83 x 73 cm



Stan Van Steendam

'herm' (2019)

varnish, pigments, ash and plaster on board
35 x 39 x 3,5 cm



Stan Van Steendam

'vitric' (2018)

varnish, pigments and plaster on board
39 x 35 x 3,5 cm





Stien Bekaert

'Noise 03' (2019)

2 litho-transfer prints & methyl cellulose o layered (taiwanese) paper
mounted on glass in double sided frame
68 x 49 cm
unique piece



Manor Grunewald

'Untitled (Concrete 32)' (2015)

oil, acrylics, UV print on canvas, aluminium framed
70 x 90 cm



Adriaan Verwée

'Fieldnote, achter de wacht I' (2016-2017)

Archival print on Hahnemühle Photo Rag 308gsm
37.5 x 53 cm
unique piece



Andy Wauman

'Rose I' (2013)

Epson Print Bright White 310grs on Dibond in metall frame
145x100 cm
unique piece





Thé Van Bergen

'Untitled' (1993)

oil on canvas
120 x 100 cm



Stan Van Steendam

"folha" (2019)

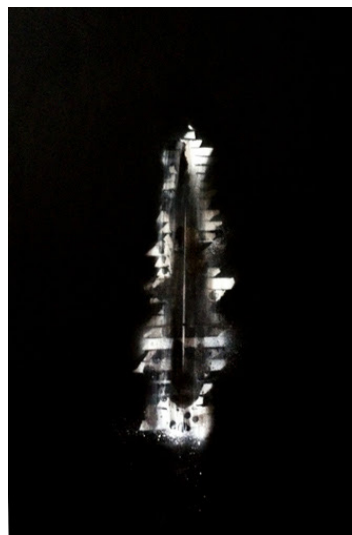
pigments, plaster, ash and epoxy on wood
22,5 x 26 x 8,5 cm



Stan Van Steendam

'ver' (2019)

pigments, plaster, ash and epoxy on wood
23,5 x 26,5 x 9,5 cm



Gail Stoicheff

'Prima Facie 3' (2012)

oil on canvas
100 x 60 cm



Evy Bosman

'When the, ...' (2019)

Giclee Fine Art Print, William Turner 310 gr; reprocessed with drawing in charcoal and pastel
80 x 60 cm
unique piece



Adriaan Verwée

'Fieldnote, achter de wacht X' (2016-2017)

Archival print op Hahnemühle Photo Rag 308gsm
37.5 x 53 cm
unique piece



Stef Van Looveren

'O Black', 'O White' (2018)

silicone mounted on metal structure
61 x 20 cm
unique piece





Xavier Robles de Medina

'Cult Value' (2019)

graphite and plaster
40 x 30 x 11 cm
(ed. 1/4 + 1 AP)



A.R. Penck

'Ein Monster erscheint' (1990)

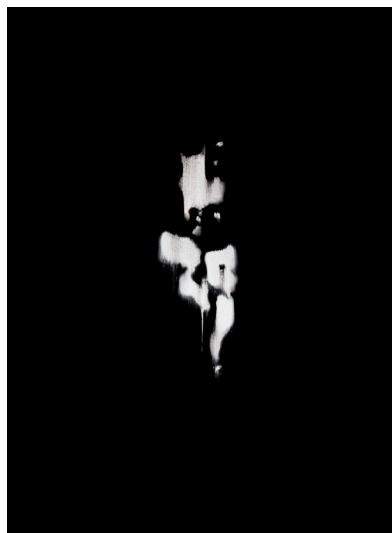
lithograph
70 x 85 cm
Ed. 15 / # 6/15



Andy Wauman

'Adios paradise' (2008)

black ink on canvas
160x120 cm
Ed. 2 + 1 A.P.



Gail Stoicheff

'Prima Facie 2' (2012)

oil on canvas
90 x 60 cm



Xavier Robles de Medina

'She Sells Sea Shells' (2014)

gypsum cement and urethane plastic
26 x 44 x 7 cm
unique piece



Stien Bekaert

'Noise 2' (2019)

litho-transfer prints & methyl cellulose o layered (taiwanese) paper in glass
double sided frame
68 x 49 cm
unique piece



Stien Bekaert

'Noise 1' (2019)

litho-transfer prints & methyl cellulose o layered (taiwanese) paper in glass
double sided frame
68 x 49 cm
unique piece



EMOTION: OXYGEN





Sofie Middernacht & Maarten Alexander

'Vulnerable dimensions II', S2 / S1 / S4 (2017)

(installation view of 9 works on previous page)

multiple layers of clear high floss UV epoxy resin, black acrylic glass
30 x 36 cm
edition of 5



Tamara Van San

'Unchained Melody' (2011)

glazed Ceramics
17,5 x 20 cm



Adriaan Verwée

'Fieldnote, achter de wacht VIII' (2016-2017)

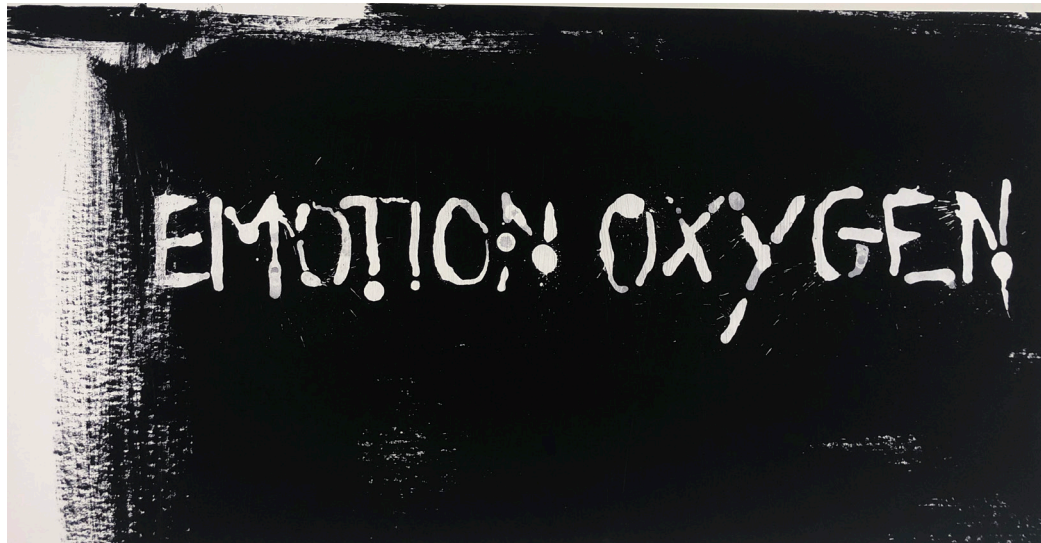
Archival print op Hahnemühle Photo Rag 308gsm
37.5 x 53 cm
unique piece



Adriaan Verwée

'Fieldnote, achter de wacht VI' (2016-2017)

Archival print op Hahnemühle Photo Rag 308gsm
37.5 x 53 cm.
unique piece



Andy Wauman

'Emotion Oxygen' (2008)

black ink on canvas
90 x 175 cm
ed./2 + 1 A.P.



Simon Van Parys

'3 London Pistons' (2019)

print on brushed aluminium
60 x 31 cm
ed./3



Simon Van Parys

'London Piston' (2018)

epoxy and carbon fiber,
ca. 37 x 14 x 14 cm
ed./3



Tamara Van San

'You Made Me Believe in Silence' (2014)

glazed Ceramics
ca. 23 x 25 x 25 cm
unique piece



Evy Bosman

'Starlight no.5', 'The Passenger', 'The ring of' (2019)

concrete print 3D
15 x 20 x 1,5 cm
ed./3

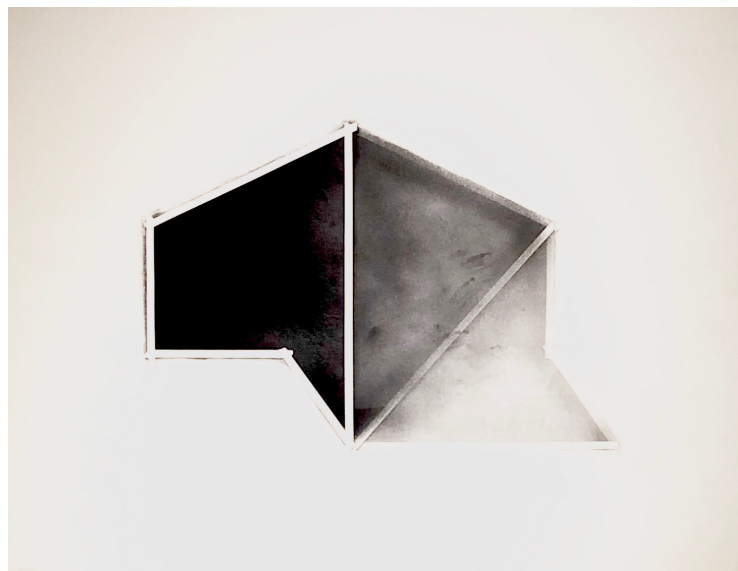


Shinji Murakami

'Skull' (2012)

massive wood, glue and alkyd
45 x 45 x 40 cm
unique piece

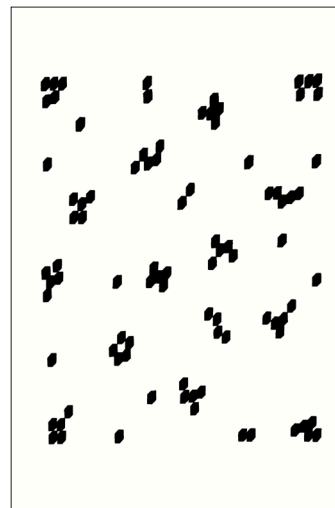
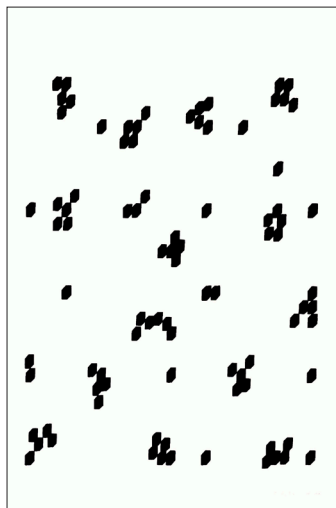




Benni Efrat

'Extrapolations' (1980)

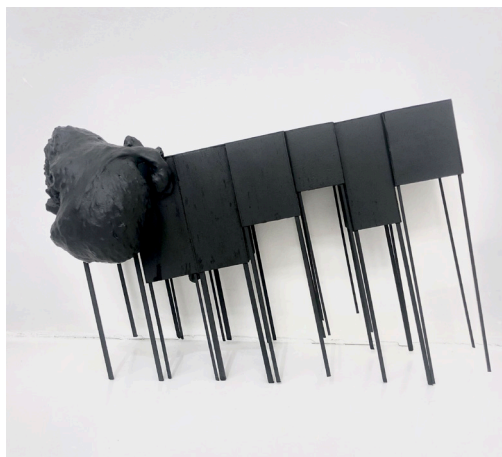
pencil and charcoal on paper
107 x 135 cm (framed)



Dieter Lannoo

'Untitled' (2019)

ink on paper
100 x 70 cm (framed)
unique piece



Dieter Lannoo

'Untitled' (2019)

wood, PU foam and paint
ca. 15 x 24 x 34 cm
unique piece





Andy Wauman

'Dead Head' (2008)

digital print on paper
110 x 115 cm
ed./2 + 1 A.P.



For availability or more information:

desk@barbe-urbain.com

+32.9.391.39.13

BARBÉ URBAIN gallery
Penitentenstraat 29
9000 Gent
Belgium