



CLEVE HILL SOLAR PARK

Community Consultation Leaflet

November 2017

www.clevehillsolar.com



CLEVE HILL
SOLAR PARK

1. Introducing Our Proposals

We are proposing to develop the Cleve Hill Solar Park on the north Kent coast. The Cleve Hill Solar Park would generate renewable power through photovoltaic solar panels, providing clean power to homes across Kent.

The site is located roughly 1 mile northeast of Faversham, 3 miles west of Whitstable and situated closest to the village of Graveney.

The project could have a generating capacity exceeding 350 Megawatts (MW). This would be enough to power approximately 110,000 homes a year, roughly the equivalent number of households for the Swale and Canterbury districts combined.

About us

Cleve Hill Solar Park Ltd is a joint venture formed by two solar industry specialists – Hive Energy Ltd and Wirsol Energy Ltd. Both are highly experienced solar park developers with a strong track record in the UK.



Components of a typical solar farm

1. Solar Energy
2. Fencing
3. Solar Panels
4. Inverter (DC to AC power converter)
5. Landscape Area
6. Substation
7. Battery Storage
8. Underground Cable

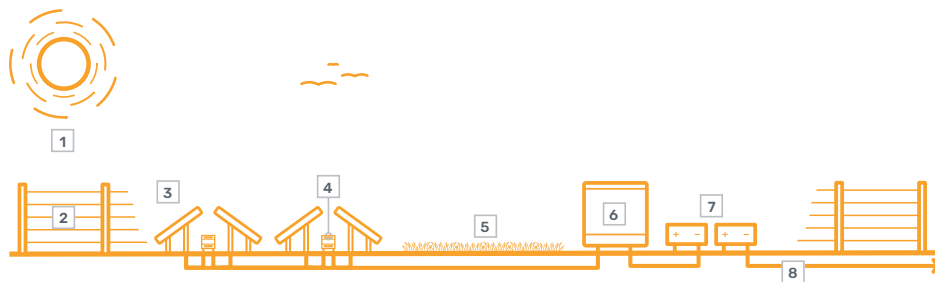


Figure not to scale and for indicative purposes only.

2. Our Vision for the Scheme

Our ambition is to deliver a scheme that helps to address national and local electricity needs by generating an affordable and renewable source of clean energy. We are committed to generating more clean renewable energy. We make a promise to our neighbours to build long-term and meaningful relationships and to always operate in a transparent and respectful way.

A quarter of the UK's generating capacity is due to close by 2018 so a new mix of electricity generation is needed to keep the lights on. With the UK's climate change ambitions being amongst the highest in Europe, we will need to significantly increase our renewable energy growth without jeopardising electricity supply, or increasing costs for consumers.

The proposed Cleve Hill Solar Park is a pioneering scheme, which would provide home grown renewable energy and would not require government subsidies. If built the project would also bring over £1 million of income a year to Kent and Swale Councils, enabling reinvestment in local services.

Cleve Hill Solar Park Ltd is also proposing to use battery storage technologies, which would store any excess power and distribute it to the national grid when it's needed the most.

We will work with people in the local area to ensure that our proposals represent an inclusive and holistic scheme. Throughout the consultation process for the project we will be inviting ideas and feedback from communities and stakeholders.



This project is **non-subsidised** so will not receive government funding.



Over **£1,000,000** income per annum will be generated for Kent and Swale Councils.



Dedicated mitigation areas for **bird species** including: Lapwing, Brent Goose, Golden Plover and Marsh Harrier.



Cleve Hill Solar Park has the potential to power **110,000 UK homes**.

3. Proposed Site Layout



We have been conducting bird surveys since 2014. There are a number of bird species in the area using more than one habitat. Some feed in the mudflats at low tide and then move up to roost on the saltmarsh or on fields inland of the sea wall.



The Saxon Shore Way long distance walking route runs around the western and northern perimeters of the site.



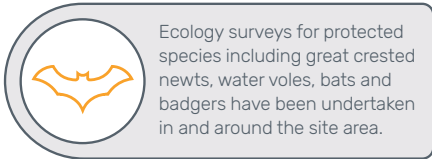
During the breeding season (April to September) bird species including Marsh Harrier, Little Tern and Lapwing, can be spotted.



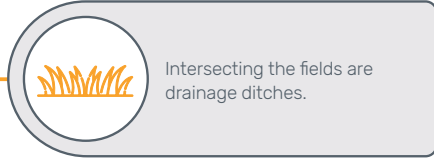
The site is defended from tidal flooding by the sea wall and coastal flood defences.



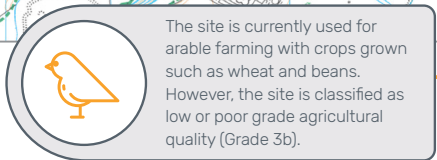
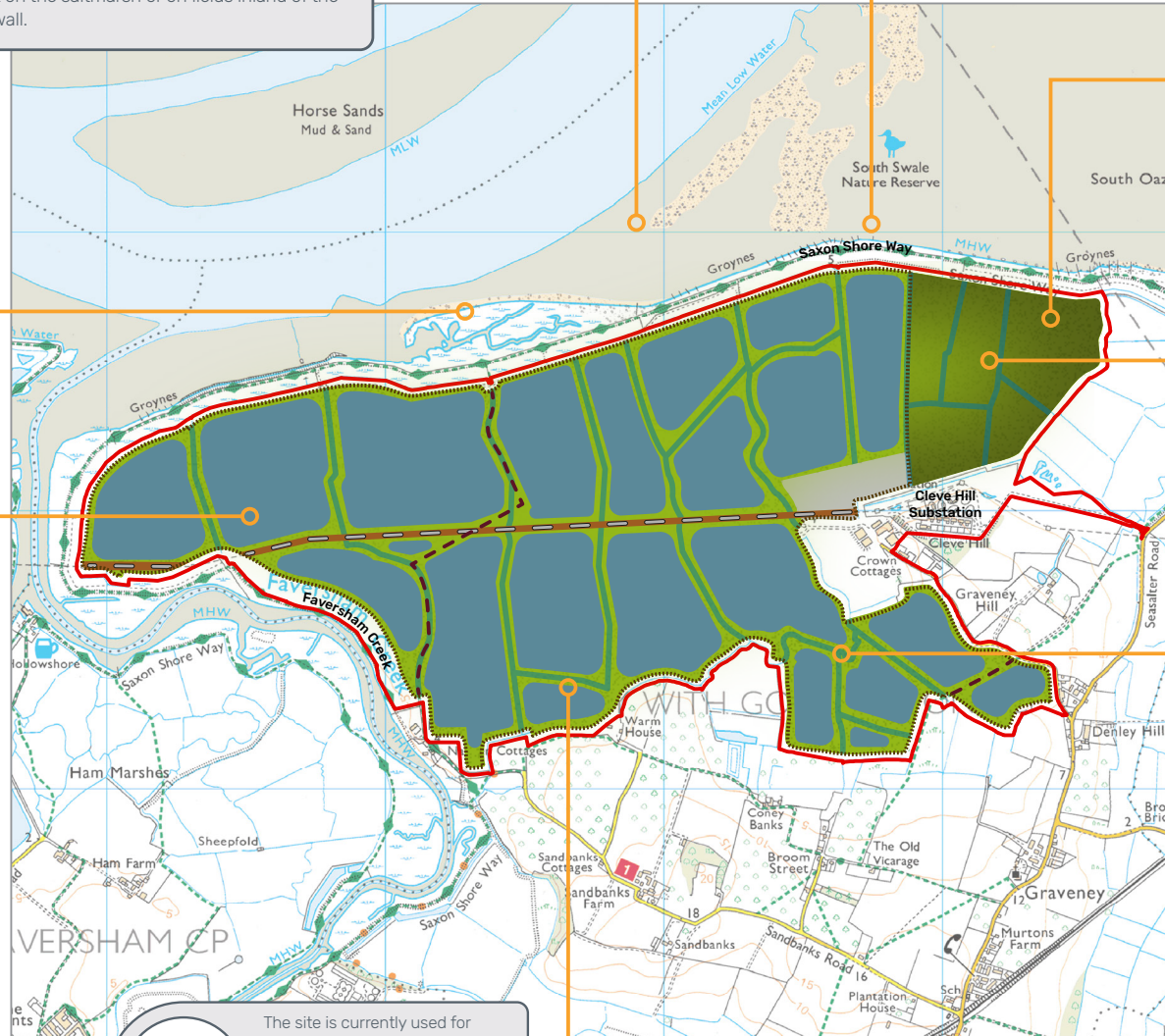
During the wintering period (September to April) bird species including Golden Plover, Lapwing and Geese, can be spotted.



Ecology surveys for protected species including great crested newts, water voles, bats and badgers have been undertaken in and around the site area.



Intersecting the fields are drainage ditches.



The site is currently used for arable farming with crops grown such as wheat and beans. However, the site is classified as low or poor grade agricultural quality (Grade 3b).

Key

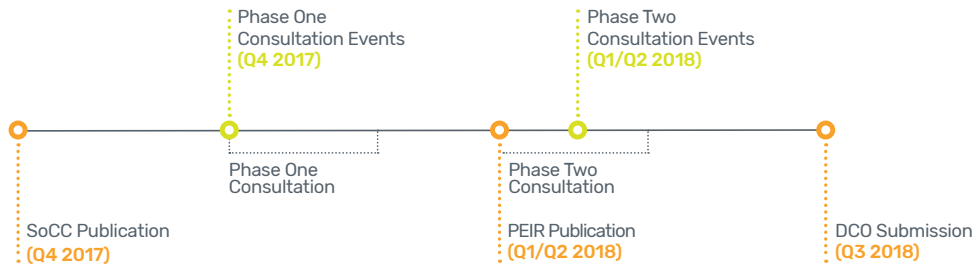
- Site area boundary
- Deer fence
- Substation and battery storage area
- Public Right of Way
- Internal access trackway
- Overhead power lines and pylons
- Habitat mitigation area
- Drainage ditches
- Indicative area for ground mounted solar panels

4. Our Consultation Process

Cleve Hill Solar Park is a Nationally Significant Infrastructure Project (NSIP) as it is proposed to have a generating capacity exceeding 50MW. We will be applying for a Development Consent Order (DCO) through the Planning Inspectorate (PINS). The application will be determined by the Secretary of State for Business, Energy and Industrial Strategy.

A DCO application is planned to be submitted in summer 2018. Prior to this we will be commencing a series of public and statutory consultations on our plans for the scheme.

Consultation timeline



Our team is dedicated to working with local communities throughout the development of the scheme, and beyond should the scheme be granted permission. A key aspect to our process is to ensure people receive useful information and that they are able to comment and provide feedback.

Throughout the process we will be engaging with communities and plan on presenting and refining our proposals across two formal phases of consultation, as outlined in our Statement of Community Consultation (SoCC), which can be accessed on our website or in a range of community locations. Throughout the process, we will report on the feedback that you have provided, and how this has helped to shape our proposals.



Aerial View of Cleve Hill with Proposed Red Line Boundary for the Cleve Hill Solar Park

5. Consultation Events

We are planning to hold two rounds of public events held at locations across our consultation area. These events will be a direct opportunity for you to view our plans and discuss them with members of the project team.

Our first round of events will be an opportunity to view our very early stage proposals and provide your views. We would encourage anyone with an interest in these proposals to come along.

Consultation events table:

Tuesday 5 December from 5pm to 8pm, at Sheppey Evangelical Church, Warden Bay Road, Leysdown, ME12 4NA
Wednesday 6 December from 11.30am to 7.30pm, at Faversham Assembly Rooms, 66 Preston St, Faversham, ME13 8PG
Thursday 7 December from 1.30pm to 8pm, at Graveney Village Hall, Graveney, Faversham, ME13 9DN
Friday 8 December from 12.30pm to 4.30pm, at Seasalter Christian Centre, Faversham Road, Whitstable, CT5 4AX

Our second round of events will take place in Spring 2018.



Solar Panels



Reed-Filled Ditch, Seasalter

6. Contact Us

Please don't hesitate to get in touch if you would like to find out more information about Cleve Hill Solar Park and our associated consultation programme.

You can contact our Community Relations Team and find out more by using the details below.

All images, graphics and maps in this document are for illustrative purposes only.
For all sources please visit our website.



CLEVE HILL
SOLAR PARK



Write to us at:

Freepost: Cleve Hill Solar



Email us at:

info@clevehillsolar.com



Call our Freephone information line:

0800 328 2850



Visit our website at:

www.clevehillsolar.com