

A SPECIAL EVENT

**INAUGURAL U.S.
WORLD HOSPICE & PALLIATIVE
CARE DAY CELEBRATION:
A VIRTUAL COMING TOGETHER**

SATURDAY OCTOBER 10, 2020

0900—1700 EST

VIRTUAL EVENT ON ZOOM

**Institutional Host: Supportive Care Service,
Memorial Sloan Kettering Cancer Center**



My Care
My comfort

**WORLD HOSPICE & PALLIATIVE CARE DAY
10 OCTOBER 2020/#MYCAREMYCOMFORT**

Follow us on Twitter: @US_WorldHaPCDay

View event on Facebook: <https://www.facebook.com/US-World-Hospice-Palliative-Care-Day-Celebration-115265956994077>

Email us at: us.worldhapcday@gmail.com

Inaugural U.S. World Hospice & Palliative Care Day Celebration:

A Virtual Coming Together

(SEE SPEAKER BIO INFORMATION ENCLOSED FOLLOWING SCHEDULE)

Date & Time: Saturday, October 10, 2020 ; 0900 – 1700 EST

REGISTER for Webinar HERE: https://meetmsk.zoom.us/webinar/register/WN_zMHCQ5I2Q1KcYZNzjBHllg

Cost: FREE; no CME/CEU to be offered.

Moderators & Organizers:

Billy Rosa, Event Lead
Shila Pandey, Event Co-Lead
Andrew Epstein, Event Co-Lead





WHPCA Theme: “My Care, My Comfort”


For More Information on World Hospice & Palliative Care Day: https://www.thewhpc.org/world-hospice-and-palliative-care-day/about?mc_cid=2a479ce4ef&mc_eid=1764057095

SCHEDULE

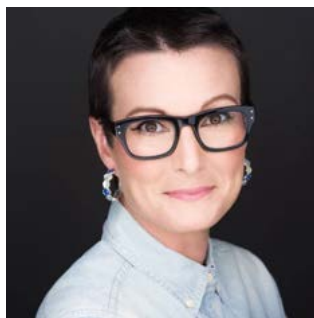
Time (EST)	Topic	Speaker/s & Moderators (@Twitter Handle Where Available)
0900-0910	Welcome	<ul style="list-style-type: none">Billy Rosa, PhD, MBE, ACHPN, FAANP, FAAN (@billy_rosa_) Postdoctoral Research Fellow in Psycho-Oncology Dept. of Psychiatry & Behavioral Sciences, MSKCC Editorial Board, <i>Journal of Hospice & Palliative Nursing</i> Member, Consortium of Universities for Global Health (CUGH) Palliative Care Working GroupShila Pandey, MSN, AGPCNP-BC, ACHPN (@shilapandey) Nurse Practitioner, Supportive Care Service, MSKCC Treasurer, Metro NY Hospice & Palliative Nurses Association ChapterAndrew Epstein, MD Medical Oncology and Supportive Care Service, MSKCC Cambria Health Foundation Sojourns Scholar (2017 Cohort)
0910-0940	Global Palliative Care: Where Are We Headed?	<ul style="list-style-type: none">Felicia Marie Knaul, PhD, MA (@FeliciaKnaul) Chair, Lancet Commission on Palliative Care & Pain Relief Director, University of Miami Institute for Advanced Study of the Americas Professor, University of Miami Miller School of Medicine President, Cáncer de mama: Tómatelo a Pecho AC, MéxicoMODERATOR: Billy Rosa
0940-0955	Global Exemplar: Pallium India	<ul style="list-style-type: none">Ann Broderick, MD, MS (@annbroderick1) Director, Hospice & Palliative Care Program VA Medical Center, IA, USA Chair, Board of Directors, Pallium India U.S.A.MODERATOR: Shila Pandey



0955-1030	Patient & Family Conversation	<p>'Why Not Me?' A Patient's & Wife's Perspectives on Living Well With Advancing Cancer & the 'Gift' of Hospice</p> <ul style="list-style-type: none"> • MODERATOR: Andrew Epstein
1030-1130	Hospice & Palliative Care Service Leaders in a Global COVID-19 Hotspot	<ul style="list-style-type: none"> • David Chmielewski, MD Medical Director, United Hospice, NY, USA • Diane E. Meier, MD, FACP, FAAHPM (@DianeEMeier) Director, Center to Advance Palliative Care (CAPC) Co-director, Patty & Jay Baker National Palliative Care Center Professor, Dept. of Geriatrics & Palliative Medicine Catherine Gaisman Professor of Medical Ethics, Icahn School of Medicine at Mount Sinai • Judith Nelson, MD, JD Chief, Supportive Care Service, MSKCC Professor of Medicine, Weill Cornell Medical College • MODERATOR: Shila Pandey
1130-1145	 BREAK 	
1145-1245	Equitable & Inclusive Palliative Care: Social Justice NOW	<ul style="list-style-type: none"> • Kimberly D. Acquaviva, PhD, MSW, CSE (@kimacquaviva) Betty Norman Norris Endowed Professor University of Virginia School of Nursing • J. Nicholas Dionne-Odom, PhD, MSN, MA, ACHPN, FPCN (@N_DionneOdomPhD) Assistant Professor, University of Alabama at Birmingham School of Nursing Co-director, Caregiver & Bereavement Support Services, UAB Center for Palliative & Supportive Care • Ronit Elk, PhD (@RoneetE) Professor, School of Medicine, University of Alabama at Birmingham, Division of Geriatrics, Gerontology & Palliative Care Associate Director, Southeast Institute for Innovation in Palliative & Supportive Care Global Associate Editor, <i>Journal of Pain & Symptom Management</i> • Salimah H. Meghani, PhD, MBE, RN, FAAN (@SMeghani_PhD) Professor & Term Chair in Palliative Care, University of Pennsylvania School of Nursing, NewCourtland Center for Transitions and Health Senior Fellow, Leonard Davis Institute of Health Economics, University of Pennsylvania • MODERATOR: Andrew Epstein
1245-1315	 BREAK 	
1315-1415	Palliative Nursing in the COVID-19 Era	<ul style="list-style-type: none"> • Patricia M. Davidson, PhD, RN, FAAN (@nursingdean) Dean and Professor, Johns Hopkins University School of Nursing Secretary General, WHO Collaborating Centers for Nursing & Midwifery Counsel General, International Council on Women's Health Issues Board Member, CUGH

1315-1415	Palliative Nursing in the COVID-19 Era (cont'd.)	<ul style="list-style-type: none"> • Cathy Finlayson, PhD, RN, OCN Clinical Nurse, Department of Nursing, MSKCC • Jeri L. Miller, PhD, MS, MSc Chief, Office of End-of-Life & Palliative Care Research (OEPCR) NINR Center's Program, PCRC, National Institute of Nursing Research, DHHS/National Institutes of Health (NIH) • Cheryl Ann Thaxton, DNP, RN, CPNP, FNP-BC, CHPPN, ACHPN Faculty, End-of-Life Nursing Education Consortium (ELNEC) DNP Program Director, Texas Woman's University, The Houstin J & Florence A Doswell College of Nursing • Moderator: Billy Rosa
1415-1515	The Urgency of Interprofessional Spiritual & Existential Care in the Age of Pandemic	<ul style="list-style-type: none"> • The Rev. Laurie Andersen, BCC, DMin Chaplain, Supportive Care Service, MSKCC • The Rev. George Handzo, APBCC, CSSBB (@ghandzo) Director, Health Services Research & Quality HealthCare Chaplaincy Network • Christina Puchalski, MD, OCDS, FAAHPM, FACP (@cpuchalski1) Professor, Medicine & Health Sciences Executive Director, The George Washington University's Institute for Spirituality & Health The George Washington University School of Medicine & Health Sciences • Moderator: Shila Pandey
1515-1530		
1530-1630	Psychosocial & Ethical Considerations During COVID-19	<ul style="list-style-type: none"> • Allison J. Applebaum, PhD (@DocApplebaum) Director, Caregivers Clinic, Counseling Center, MSKCC Assistant Professor of Psychology, Psychiatry Weill Cornell Medical College • Liz Blackler, MBE, LMSW-R Program Manager & Clinical Ethics Consultant, Ethics Committee, MSKCC • Wendy Lichtenthal, PhD (@wendylic) Director, Bereavement Clinic, Counseling Center, MSKCC • Talia Zaider, PhD Director, Family Therapy Clinic, Counseling Center, MSKCC • MODERATOR: Billy Rosa
1630-1655	Hospice & Palliative Care Advocacy in a New World	<ul style="list-style-type: none"> • Katherine Pettus, PhD (@kpettus) Advocacy Officer, International Association for Hospice & Palliative Care • MODERATOR: Billy Rosa
1655-1700	Gratitude & Closing	<ul style="list-style-type: none"> • Billy Rosa, Shila Pandey, & Andrew Epstein

Speakers & Moderators



Since August 1, 2019, **Kimberly D. Acquaviva, PhD, MSW, CSE** has served as the Betty Norman Norris Endowed Professor at the University of Virginia School of Nursing. Prior to that, she spent fifteen years as a faculty member at the George Washington University (GW) School of Nursing and the GW School of Medicine and Health Sciences. As a social worker teaching within a school of nursing, her scholarship is interdisciplinary and collaborative. Her scholarly work focuses on LGBTQ aging and end-of-life issues, and her clinical work has been with patients and families facing life-limiting illnesses in both hospital and hospice settings. Her book, *LGBTQ-Inclusive Hospice & Palliative Care: A Practical Guide to Transforming Professional Practice*, was

published by Harrington Park Press and distributed by Columbia University Press. The book was awarded first place in the AJN Book of the Year Awards in the Palliative Care and Hospice Category. She's the host of em dash podcast, a show that explores the lived experiences of patients and healthcare professionals in the healthcare arena. Dr. Acquaviva has a Ph.D. in Human Sexuality Education from the University of Pennsylvania Graduate School of Education, an M.S.W. from the University of Pennsylvania School of Social Policy and Practice, and a B.A. in Sociology from the University of Pennsylvania College of Arts and Sciences. She is an AASECT-Certified Sexuality Educator. **(Speaker | Social Justice Panel | 1145-1245)**



The Rev. Laurie J. Andersen, BCC, DMin is the Palliative Care Chaplain on the Supportive Care Service at Memorial Sloan Kettering, NYC. Board Certified by the Association of Professional Chaplains (APC) in 2013, Laurie has ministered to patients at EOL and their families as a clinical chaplain since 2007 in the VA and other hospital settings. Ordained as a Pastor in the Lutheran church, Laurie's interest in Counseling and Psychology led her to complete a Doctorate in Ministry at Hebrew Union College in Pastoral Counseling, with a special interest in Bowen Family Systems Theory. She is thrilled and honored to be speaking alongside such extraordinary voices in the field during World Hospice & Palliative Care Day. **(Speaker | Spiritual Care Panel | 1415-1515)**





Allison J. Applebaum, PhD, is an Assistant Attending Psychologist in the Department of Psychiatry and Behavioral Sciences, Memorial Sloan Kettering Cancer Center (MSK), and an Assistant Professor of Psychology in Psychiatry at Weill Cornell Medical College. She is the Founding Director of the Caregivers Clinic at MSK, housed in the Counseling Center. The Caregivers Clinic is the first of its kind and provides comprehensive psychosocial care to family members and friends of patients who experience significant distress and burden as a result of their caregiving role. Dr. Applebaum's program of research focuses on the development and dissemination of psychosocial interventions for cancer caregivers, as well as understanding the impact of caregiver psychosocial wellbeing, prognostic awareness and communication skills on advanced care planning. She has published over 75 articles, reviews, and book chapters on these topics, and is the editor of the recently published

textbook "Cancer Caregivers" by Oxford University Press. Dr. Applebaum has received competitive funding for her research, including awards from the National Cancer Institute, the American Cancer Society, the T.J. Martell Foundation, and the van Ameringen Foundation. **(Speaker | Psychosocial & Ethics Panel | 1530-1630)**



Liz Blackler, MBE, LCSW-R, is the Program Manager for the Ethics Committee and Consultation Service at Memorial Sloan Kettering. She is an experienced Clinical Ethics Consultant with a Master of Science in Bioethics from Albert Einstein College of Medicine-Benjamin Cardozo School of Law and a Master of Science in Social Work from Columbia University. Her clinical interests involve working with staff to enhance end-of-life communication and decision-making and navigate conflicts and ethical concerns that can arise around the end of life, including the use of life-sustaining therapies. Her academic focus is in bioethics education and training of clinical staff. **(Speaker | Psychosocial & Ethics Panel | 1530-1630)**





David Chmielewski, MD is Board-certified in both Internal Medicine and Hospice & Palliative Medicine. After completing his BA in Theater and English at Brandeis University and his MA in Education at Columbia University Teachers College, Dr. Chmielewski embarked upon a career change and earned his MD from SUNY at Buffalo. There he received the David K. Miller prize in Medicine, “for demonstration of Dr. Miller’s approach to caring for the sick—competence, humility, humanity.” He completed his internship and residency in Internal Medicine at NYU Medical Center/Bellevue Hospital Center, and then completed his fellowship in Hospice & Palliative Medicine at New York-Presbyterian Hospital/Columbia

University Medical Center. He has been Medical Director at United Hospice since 2012. Dr. Chmielewski has lectured in New York City as well as at the local, state, and national levels on his areas of professional expertise and interest, which include the management of pain and other physical symptoms, the medical management of emotional and psychosocial symptoms in the seriously ill, provider-patient-family communication, biomedical ethics, and end-of-life care. **(Speaker | Service Leader Panel | 1030-1130)**



Ann Broderick, MD, MS, is currently the Director of Hospice and Palliative Care at the VA Medical Center in Iowa City, Iowa. She is Clinical Professor Emerita at the University of Iowa. She has worked in Palliative Care since the 1990’s, first as a medical director of Iowa City Hospice, then as the Director of Palliative Care and Program Director for the Hospice and Palliative Medicine Fellowship at the University of Iowa. She joined the Pallium India USA Board in 2018, and became Chairperson in 2019 to further engage the global community in reducing serious health-related suffering in India and elsewhere. In 2014, Dr. Broderick joined University of Iowa faculty to bring undergraduate health profession students to Pallium India for the innovative India Winterim course. She and her colleagues converted the course from a classroom course to one based on service learning, having students work as their highest priority on projects designated by Pallium India/Trivandrum Institute of Palliative Sciences (TIPS) staff. Each year, following the end of the course, she has remained on site to act as consultant, focusing on creating a culture of quality improvement in the fields of pharmacotherapy and mechanics of palliative care delivery. She developed a structure for international visitors so that their visits were fruitful for both the visitors and TIPS. She has coordinated the visits of numerous learners and peers from the US, New Zealand, Australia, and the UK at TIPS with an emphasis on building capacity for palliative care in India. **(Speaker | Global Exemplar | 0940-0955)**





Patricia M. Davidson, PhD, RN, FAAN, is Dean and Professor, Johns Hopkins University School of Nursing. She has been a registered nurse since 1980 and has clinical, teaching, and practice expertise in cardiovascular science and the care of vulnerable populations. Across her career, she has been committed to developing innovative models of person-centered care delivery and evidence-based teaching. Dr. Davidson is secretary general of the Secretariat of the [World Health Organizations Collaborating Centers for Nursing and Midwifery](#), counsel general of the [International Council on Women's Health Issues](#), a member of Sigma Theta Tau International's Institute for Global Healthcare Leadership Advisory Board, and a board member of the Consortium of Universities for Global Health. She also serves on the Board on Health Care Services for the National Academies of Sciences, Engineering, and Medicine.

She has co-authored over 500 peer-reviewed journal articles and 29 book chapters. She has been the adviser for over 40 doctoral and 15 postdoctoral candidates. She is deeply committed to diversity, equity, inclusion, and workforce development and interdisciplinary practice. Dr. Davidson is strongly focused on mentoring the next generation of health professionals and scientists, and in 2016 she earned the Australian Museum Eureka Prize for Outstanding Mentor of Young Researchers, the most prestigious research mentorship award in Australia. She is associate editor of the *International Journal of Nursing Studies* and on the editorial boards of a number of other journals. **(Speaker | Palliative Nursing Panel | 1315-1415)**



J. Nicholas Dionne-Odom, PhD, RN, ACHPN, is an Assistant Professor in the School of Nursing at the University of Alabama at Birmingham (UAB), Co-Director of Caregiver and Bereavement Support Services in the UAB Center for Palliative and Supportive Care, and Associate Chair of the Palliative Care Research Cooperative Group Caregiver Core. His program of research is focused on the development, clinical trials testing, and implementation of early, telehealth, lay coach-led palliative care interventions for underrepresented family caregivers of persons with advanced cancer and heart failure using the multiphase optimization strategy. Dr. Dionne-Odom is also interested in decision psychology and the role families play in partnering with patients in health-related decision-making, from diagnosis to end of life. His research is currently funded by the National Institute of Nursing Research, the National Cancer Institute, the National Palliative Care Research Center, and the Gordon and Betty Moore Foundation. **(Speaker | Social Justice Panel | 1145-1245)**





Ronit Elk, PhD, is Professor, Department of Medicine, Division of Geriatrics, Gerontology and Palliative Care, at the University of Alabama, Birmingham, and Associate Director of the Center for Palliative and Supportive Care, and of the Southeast Institute for Innovation in Palliative Care. Her research focuses on partnering with underserved communities to **develop culturally concordant palliative care interventions** based on the community's cultural values and preferences at end of life, and in training clinicians in providing the culturally concordant care. Dr. Elk has published extensively but is most proud of her work as the guest Editor of a Special issue in the Journal of Palliative Medicine, focusing on Palliative and End of Life Care for African Americans. Her editorial is titled: *"The first step is recognizing, acknowledging, and respecting the inequity, disrespect, and disregard our African American patients have experienced."* (**Speaker | Social Justice Panel | 1145-1245**)



Andrew Epstein, MD, is an Associate Attending at Memorial Sloan Kettering (MSK) and an Associate Professor of Medicine at Weill Cornell Medical Center. He has completed fellowships in Palliative Medicine and Medical Oncology and holds joint appointments at MSK in GI Medical Oncology and Supportive Care. His research focuses on improving the delivery of care to patients and their families by optimally integrating cancer care with palliative medicine. He has received grant funding for research in patient-physician communication and advance care planning from various organizations including from ASCO, the National Palliative Care Research Center, the Cambia Health Foundation, and the NIH. In 2019, Dr. Epstein was named an Emerging Leader in Hospice and Palliative Medicine by AAHPM. In collaboration with the MSK Department of Psychiatry and Behavioral Sciences, he teaches communication skills to fellows at Memorial. Since starting it at MSK in 2013, he leads the case-based interprofessional and psychosocial Schwartz Rounds at MSK. On the national level, he is active in palliative oncology, serving as Chair of ASCO's Palliative Oncology Symposium program committee in 2019, and he is a member of the NCCN Palliative Care Guidelines panel. (**Moderator & Organizer**)





Catherine S. Finlayson, PhD, RN, OCN, has been a clinical nurse at Memorial Sloan Kettering Cancer Center for fourteen years. She earned her PhD from New York University's Rory Meyers College of Nursing in 2018. Dr. Finlayson received the Doctoral Degree Scholarship in Cancer Nursing from the American Cancer Society to support her dissertation research, which subsequently won the outstanding dissertation award that year. She was the recipient of the 2018 Oncology Nursing Society Trish Greene Memorial Lectureship. In addition to her clinical work, she is an adjunct

professor at Pace University. She is also the current chapter President for ONS NYC. Dr. Finlayson holds a Bachelor of Arts in Political Science from New York University. A Master of Science in Urban Policy Analysis and Management from the New School for Social Research and a BSN from SUNY Downstate Medical Center. **(Speaker | Palliative Nursing Panel | 1315-1415)**



The Rev. George F. Handzo, APBCC, CSSBB is widely regarded as one of the foremost authorities on the deployment and practice of professional healthcare chaplaincy. As Director of Health Services Research and Quality at HealthCare Chaplaincy Network and President of Handzo Consulting, Rev. Handzo oversees projects devoted to the strategic assessment, planning and management of chaplaincy services and to developing the evidence for the efficacy of chaplaincy care. Rev. Handzo has authored or co-authored over 100 chapters and articles on the practice of spiritual care and chaplaincy care. He is a past president of the Association of Professional Chaplains which in 2011 awarded him the Anton Boisen Professional Service award, its highest honor. He serves on the Geriatrics and Palliative Care Committee of the National Quality Forum the Distress Guidelines Panel of the National Comprehensive Cancer Network and the Advisory Board of the Palliative Care Quality Network. The Rev. Handzo is a graduate of Princeton University and Yale University Divinity School. He is a Certified Lean Six Sigma Black Belt. **(Speaker | Spiritual Care Panel | 1415-1515)**





Felicia Marie Knaul, PhD, MA, is Director of the Institute for Advanced Study of the Americas and Professor at the Miller School of Medicine at the University of Miami. A health and social sector economist who has worked extensively in Latin America and the Caribbean, Knaul maintains a strong program of research and advocacy in the region, especially in Mexico, where she is Senior Economist at the Mexican Health Foundation. She is also the Founding President of Tómatelo a Pecho, a Mexican NGO that undertakes and promotes research, advocacy, awareness, and early detection of priority issues for the health of women. Her research focuses on global health, health financing, health systems and reform, cancer and especially breast cancer in low- and middle-income countries, access to pain control and palliative care, poverty and inequity, and gender equity. She currently

chairs the Lancet Commission on Gender-based Violence and Maltreatment of Young People. From 2014-2017, Knaul served as Chair of the Lancet Commission on Global Access to Palliative Care and Pain Relief and lead authored its October 2017 report. She is a member of several institutional boards, including the International Association for Hospice and Palliative Care. She received her B.A. in international development from the University of Toronto and M.A. and Ph.D. in economics from Harvard University. **(Speaker | Global Palliative Care | 0910-0940)**



Wendy G. Lichtenthal, PhD, is Director of the Bereavement Clinic and Associate Attending Psychologist in the Department of Psychiatry and Behavioral Sciences at Memorial Sloan Kettering Cancer Center (MSK) and Assistant Professor of Psychology in the Department of Psychiatry at Weill Cornell Medicine. She completed her undergraduate studies at The University of Chicago, her doctorate at the University of Pennsylvania, her clinical psychology internship at Payne Whitney/Weill Cornell Medicine, and a postdoctoral research fellowship in psycho-oncology at MSK, where she was Chief Research Fellow. Dr. Lichtenthal's research has focused on grief and bereavement, meaning-making, intervention development, and cancer survivorship. Her research has been supported by the National Institutes of Health, the American Cancer Society, the T.J. Martell Foundation, and Cycle for Survival. Dr. Lichtenthal was the recipient of the Kawano New Investigator Award from the International Psycho-Oncology Society in 2012 and the Research Recognition Award from the Association for Death Education and Counseling in 2019. As a licensed clinical psychologist, her practice focuses on helping cancer patients and their families cope and find meaning in the face of adversity. **(Speaker | Psychosocial & Ethics Panel | 1530-1630)**





Salimah H. Meghani, PhD, MBE, RN, FAAN, is a Professor & Term Chair of Palliative Care & Senior Fellow at the Leonard Davis Institute of Health Economics at University of Pennsylvania. Her research focuses on the intersections of health disparities, decision science, and pain and symptom outcomes among seriously ill. Dr. Meghani has a long-standing commitment to advancing the field of palliative care. Between 2005-2007, she served on the *Taskforce to Improve Quality at the End of Life for Pennsylvanians* and *Patient Life-Sustaining Wishes Advisory Committee* to assess the feasibility of POLST paradigm in Pennsylvania. Between 2012-2014, Dr. Meghani served on the Institute of Medicine Study Committee that authored the report, *Dying in America: Improving Quality and Honoring Individual Preferences Near the End of Life*. More recently, she was a member of the National Academy of Medicine (NAM) planning

committee on *Pain and Symptom Management for People with Serious Illness in the Context of the Opioid Crisis* and reviewed NAM report, *Assessing Progress on the Future of Nursing*. Dr. Meghani is the past Chair of the American Pain Society's Pain Disparities Shared Interest Group, and currently serves on the Editorial Board of the official Journal of the American Academy of Pain Medicine. **(Speaker | Social Justice Panel | 1145-1245)**



Diane E. Meier, MD, FACP, FAAHPM, is CEO of the Center to Advance Palliative Care (CAPC.org), a national organization devoted to increasing access to quality palliative care for people living with a serious illness and their families in the United States. Under her leadership the number of palliative care programs in U.S. hospitals has more than tripled in the last 10 years. She is co-director of the Patty and Jay Baker National Palliative Care Center; Professor of Geriatrics and Palliative Medicine; Catherine Gaisman Professor of Medical Ethics; and was the founder and Director of the Hertzberg Palliative Care Institute, 1997-2011, all at the Icahn School of Medicine at Mount Sinai in New York City. **(Speaker | Service Leader Panel | 1030-1130)**





Jeri L. Miller, PhD, MS, MSc, is the Chief of the [NINR Office of End-of-Life and Palliative Care Research](#) (OEPCR) at the National Institute of Nursing Research (NINR) at the National Institutes of Health (NIH). The OEPCR coordinates and supports ongoing NINR and NIH research efforts in end-of-life and palliative care science, including: stimulation of end-of-life and palliative care research initiatives, creation of opportunities for collaborative activities, facilitation of interdisciplinary science, and opportunities for science to inform policy and practice. A major program priority is to coordinate the development, implementation and evaluation of end-of-life and palliative care research in direct collaboration with other NIH Institutes and Centers, federal research agencies and outside constituencies. OEPCR oversees the NINR-supported *Palliative Care Research Cooperative (PCRC)* group established in 2010 to develop scientifically-based methods that lead to meaningful evidence for improving quality of life of patients with advanced and/or potentially life-limiting illnesses, and their caregivers including family members and providers of care. With NINR Communications, the OEPCR also helps to connect the public with high-quality, evidence-based palliative care information to support individuals, families, clinicians, and communities who are managing the symptoms of serious illnesses. Numerous resources are available in both Spanish and English such as the [NINR Palliative Care Brochure](#), [Medline Plus: Palliative Care](#), and *Palliative Care: Conversations Matter™* developed to increase the use of palliative care for children and teens living with serious illnesses (see [Palliative Care for Children](#)). **(Speaker | Palliative Nursing Panel | 1315-1415)**



Judith E. Nelson, MD, JD, is Chief of the Supportive Care Service and Attending Physician on the Critical Care Service at Memorial Sloan Kettering Cancer Center, and Professor of Medicine at Weill Cornell Medical College. Dr. Nelson received her JD from Harvard Law School and MD from New York University School of Medicine. She is board certified in Internal Medicine, Palliative Medicine, Pulmonary Disease, and Critical Care Medicine. Dr. Nelson has focused on systematic integration of palliative care with intensive care and oncologic care. She has been principal investigator of multiple research and career development awards from NIH. She launched and directed The IPAL-ICU Project to help improve palliative care for ICU patients and families. Dr. Nelson recently founded the Supportive Oncology Committee of the Alliance of Dedicated Cancer Centers, which she Co-Chairs. She received a Faculty Scholar Award from the Soros Foundation's Project on Death in America, the American College of Chest Physicians' Award for Advances in End-of-Life Care, the Society of Critical Care Medicine's Ethics Achievement Award, the Pioneering Spirit Award from the American Association of Critical-Care Nurses, and Visiting Professorships at Harvard Medical School and the University of Toronto. She has authored numerous peer-reviewed scientific articles. **(Speaker | Service Leader Panel | 1030-1130)**





Shila Pandey, MSN, AGPCNP-BC, ACHPN, is a palliative care nurse practitioner at Memorial Sloan Kettering Cancer Center (MSKCC) and adjunct instructor at NYU Rory Meyers College of Nursing. She is board certified as an Adult Primary Care Nurse Practitioner and Advanced Practice Hospice and Palliative Care Nurse. She is currently completing her Doctorate of Nursing Practice (DNP) at Rutgers University. She completed her Master of Science in Nursing with subspecialty in palliative care at New York University and Bachelor of Science in Nursing from the College of New Rochelle. Shila is the treasurer for the Hospice and Palliative Care Nurses Association (HPNA) local New York City chapter. Her academic interests include primary palliative care education, management of pain and co-morbid substance use disorder, and communication skills training. **(Moderator & Organizer)**



Katherine Pettus, PhD, is the Advocacy Officer for Palliative Care at IAHP. She holds a PhD in Political Theory from Columbia University, and a Master's degree in Health Law and Policy from the University of California San Diego. She trained in California as a hospice volunteer in 2010, joining the Leadership Development Initiative at the Institute for Palliative Medicine in 2011, and the IAHP in 2014. Her PhD dissertation appeared as a book, 'Felony Disenfranchisement in America', now in 2nd edition with SUNY Press, and her Master's Thesis studied the interface between international law and access to internationally controlled essential controlled medicines for palliative care. Katherine has an extensive list of publications in edited volumes, journals, and a blog. Some of these are collected in her self-published book *Global Palliative Care: Reports from the Peripheries*. As IAHP Advocacy Officer, Katherine attends UN organization meetings to advocate for improved availability, and rational use of opioids for palliative care as a component of the right to health. She addresses issues of global palliative care development and policy as an essential element of universal health coverage throughout the life course. Dr. Pettus grounds her global advocacy work in site visits to IAHP members and partners in Low and Middle Income countries, where she participates as often as possible in home-care visits with colleagues who work in extremely challenging circumstances to deliver palliative care to patients in need.





Christina Puchalski, MD, MS, OCDS, FACP, FAAHPM, is a pioneer and international leader in the movement to integrate spirituality into healthcare in clinical settings and medical education. Dr. Puchalski is the founder and Executive Director of the George Washington University's Institute for Spirituality and Health (GWish) and Professor of Medicine at The George Washington University in Washington, DC. Dr. Puchalski is board certified in palliative care and internal medicine, directs an interdisciplinary outpatient supportive and palliative clinic in oncology and is a Medical Hospice Director in Washington, DC. She is a fellow of the American Academy of Hospice and Palliative Medicine and the American College of Physicians. Through her innovative curricular development including the development of the widely used spiritual history tool FICA she continues to break new ground in the understanding and integration of spiritual care in healthcare settings as an essential element of whole-

person care which has led to the development of Interprofessional Spiritual Care Education Curriculum (ISPEC). Dr. Puchalski has authored numerous book chapters and books, *Time for Listening and Caring: Spirituality, Care of the Seriously Ill and Dying*, and *Making Health Care Whole*. She is co-editor of an *International textbook on Spirituality and Health* and the *Handbook of Supportive Oncology and Palliative Care: Whole-Person Adult and Pediatric Care*. In 2018, Dr. Puchalski was named as one of "30 Visionaries" in the field by the American Academy of Hospice and Palliative Medicine. **(Speaker | Spiritual Care Panel | 1415-1515)**



William E. Rosa, PhD, MBE, ACHPN, FAANP, FAAN is a Postdoctoral Research Fellow in Psycho-Oncology at Memorial Sloan Kettering Cancer Center, New York. He received his BSN magna cum laude from NYU Rory Meyers College of Nursing; was valedictorian of his MSN class, Hunter College; and completed his PhD and Master of Bioethics as an RWJF Future of Nursing Scholar at the University of Pennsylvania. He is the editor of three books on leadership, global health, and theory-guided practice and has contributed more than 130 publications in a host of forums. Dr. Rosa has been recognized with numerous distinctions, including the international Spirit of Renewal Award from Sigma and the national Lillian Wald Humanitarian Award from the National League for Nursing. He serves on the editorial board for the *Journal of Hospice & Palliative Nursing* and as a board member for multiple global health and palliative care organizations. He is a Fellow of the American Academy of Nursing, the American Association of Nurse Practitioners, the American College of Critical Care Medicine, and the New York Academy of Medicine. **(Moderator & Organizer)**





Cheryl Ann Thaxton, DNP, APRN, CPNP, FNP-BC, CHPPN, ACHPN, FPCN, is an Advanced Practice Registered Nurse (APRN) who is certified as a pediatric nurse practitioner and family nurse practitioner. Dr. Thaxton is the DNP Program Director at Texas Woman's University (TWU). She has over 28 years of experience in nursing which includes several years of experience in critical care, palliative care, primary care, nursing leadership, education, program development and as school of nursing faculty. Dr. Thaxton graduated from George Washington University's DNP program and has devoted several years of her career to research surrounding the specific needs of children and adults with life-limiting illnesses. She has served as National Faculty for the End-of-Life Nursing Education Consortium (ELNEC) for several years. Dr.

Thaxton has helped to launch ELNEC pediatric palliative care education in Kyoto, Japan in addition to providing palliative care education and nurse leadership training in Hong Kong, China. She also worked with the National ELNEC Faculty to develop resources for Pediatric Palliative Care COVID-19 patients, which can be found here: <https://www.aacnnursing.org/ELNEC/COVID-19>. Dr. Thaxton is one of the founding members/former program coordinator for the Duke Children's Pediatric Quality of Life Team in Durham, North Carolina. In 2019, Dr. Thaxton received the D Magazine Excellence in Nursing Award and she was also designated as a Fellow in Palliative Care Nursing (FPCN). **(Speaker | Palliative Nursing Panel | 1315-1415)**



Talia Zaider, PhD is Assistant Attending Psychologist and Director of the Family Therapy Clinic at Memorial Sloan Kettering Cancer Center (MSKCC) in New York. Her research has focused on identifying and addressing the support needs and relational distress of couples and families in the context of cancer care. Dr. Zaider directs a multidisciplinary outpatient clinic that provides psychotherapeutic support to couples and families under care at MSKCC, and is leading a funded research study to advance the role of inpatient oncology nurses to deliver family-centered supportive care in the acute care setting. She has served as a co-investigator on randomized controlled trials testing psychosocial support interventions for couples and families coping with early and advanced stage disease. **(Speaker | Psychosocial & Ethics Panel | 1530-1630)**



Acknowledgments

Thank you to all of our attendees from across the nation and world who are participating in this very special day. Your service and compassion are always appreciated and valued worldwide, but particularly during these challenging times. This day of celebration and gathering is for you.

Thank you to our patient and family caregiver who joined to bravely and openly share their palliative care experiences in the face of serious illness. We send our most humble appreciation and our continued support.

A deep bow of gratitude to all of our expert speakers for participating in the Inaugural U.S. World Hospice & Palliative Care Day Event! Each speaker generously volunteered to share their time without request for honorarium. This day was centered on your wisdom, authenticity, scholarship, and profound impact on the field. Our sincerest thanks goes to each of you.

We are grateful to Dr. Judy Nelson, Chief of the Supportive Care Service at Memorial Sloan Kettering Cancer Center for her strong commitment to making this event a reality and for championing our service to host the day! Thank you, Judy, for your leadership and partnership throughout COVID-19 and always.

We would like to acknowledge the Worldwide Hospice Palliative Care Alliance for their organizational leadership and global celebration of hospice & palliative care and for raising the visibility of our community's collective contributions to society.

Our many thanks to the countless professional associations that have demonstrated exemplary advocacy throughout COVID-19 and have taken a stand to ensure equitable hospice & palliative care services for all human beings everywhere including but certainly not limited to: American Academy of Hospice & Palliative Medicine; Center to Advance Palliative Care; End-of-Life Nursing Education Consortium; HealthCare Chaplaincy Network; Hospice & Palliative Nurses Association; International Association for Hospice & Palliative Care; International Children's Palliative Care Network; National Hospice and Palliative Care Organization; Palliative Care in Humanitarian Aid Situations and Emergencies Network; and the Social Work Hospice & Palliative Care Network.

We wish everyone good health, safety, and continued wellbeing. We look forward to seeing you next year!

Billy Rosa, Shila Pandey, & Andrew Epstein
rosaw@mskcc.org | pandeys@mskcc.org | epsteina@mskcc.org

