



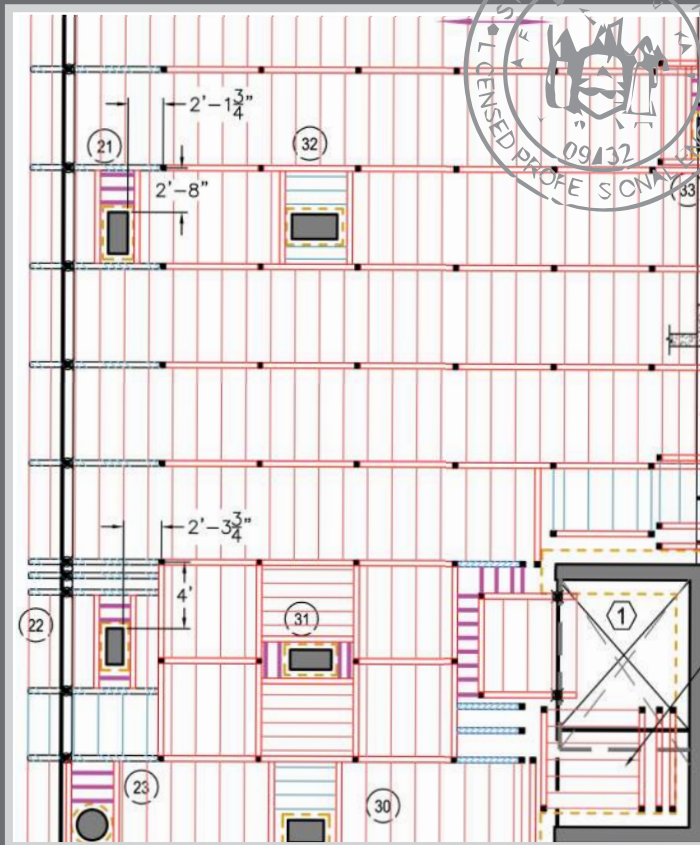
TITAN HV

EQUIPPING
BUILDERS TO
SUCCEED

TITAN
formwork systems

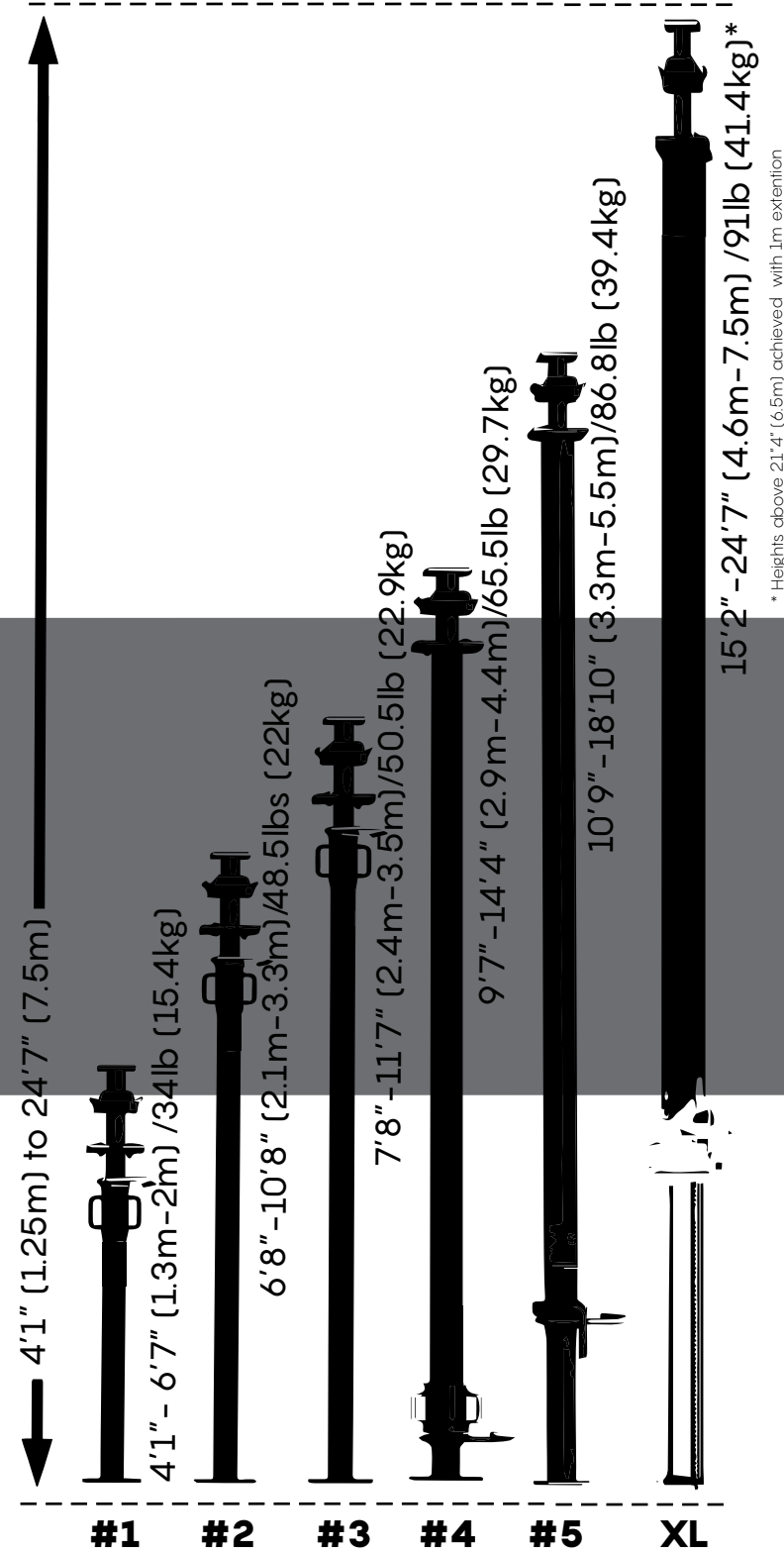
TITAN FORMWORK SYSTEMS PROVIDES:

- Comprehensive project and pricing analysis prior to the job start.
- Accurate engineered and color-coded shop drawings, complete with P.E. stamp.
- On-site training to help your team have a safe and efficient experience.



TITAN HV

Our handset modular drophead system features lightweight aluminum beams capable of shoring up to **24'7" (7.5m)** tall and framing up to **16" (400 mm)** thick slabs without supplemental shores.





TITAN HV

- Up to 45% more productive than the standard 20k shoring.
- The lightweight aluminum members are easy to install and minimize crane requirements.
- As few as a two man crew is fully capable of installing an entire deck.
- The interlocking members eliminate cutting or lapping.
- No costly make-up or assembly required.

ARRIVAL

TITAN's balanced loads saves time and money by eliminating double handling and excess equipment storage. Simply unload the truck directly into the work area and get to work.



BALANCED TRUCK LOADS
with easy to verify field counts and stacking standards. Everything you need to start is included on a truck.



IN GOOD WORKING ORDER
and fully inspected for quality and safety. Installation ready, just add wheels.



EASY MATERIAL HANDLING
with wheels provided for all stackable/rolling barella carts and baskets.

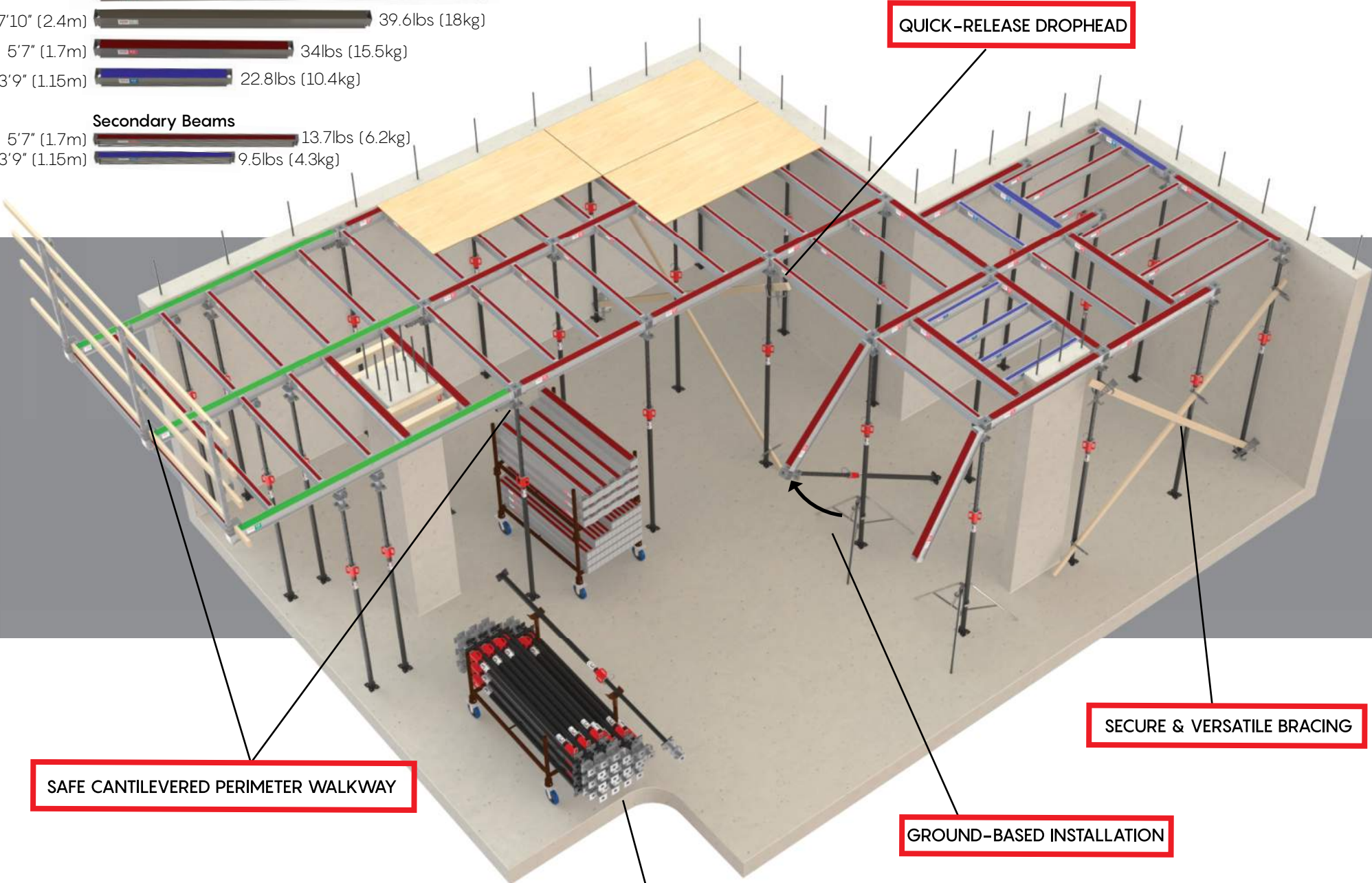
OVERVIEW

Main Beams

- 11'6" (3.5m) 62.1lbs (28.2kg)
- 7'10" (2.4m) 39.6lbs (18kg)
- 5'7" (1.7m) 34lbs (15.5kg)
- 3'9" (1.15m) 22.8lbs (10.4kg)

Secondary Beams

- 5'7" (1.7m) 13.7lbs (6.2kg)
- 3'9" (1.15m) 9.5lbs (4.3kg)



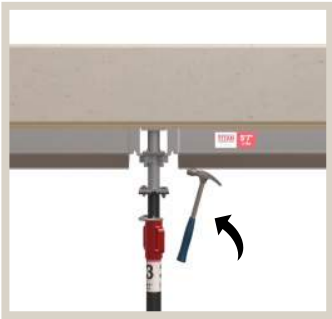
QUICK-RELEASE DROPHEAD

SAFE CANTILEVERED PERIMETER WALKWAY

EASY MATERIAL HANDLING

GROUND-BASED INSTALLATION

SECURE & VERSATILE BRACING



QUICK-RELEASE DROPHEAD

allows for safe and early removal of Main and Secondary Beams.



GROUND-BASED INSTALLATION

eliminates fall hazards and requires as few as two workers to install.



SAFE CANTILEVERED PERIMETER WALKWAY

with easy drop-in 60" [1.5 m] Guardrail Post. Safety Catch prevents uplift at cantilevered conditions. The positioner utilizes the T-Bolt slot in the beam and provides a positive connection between the shore and the beam.



SECURE & VERSATILE BRACING

the universal wedge clamp and tripod ensure lateral stability. TITAN's design accounts for lateral loads.



ERECTION PROCESS

- 1.** Secure the first few shores with tripods and hang the Main Beams from the Dropheads.
- 2.** After this is done, simply raise the Main Beam with the Shore/Drophead into position.
- 3.** Once Main Beams are erected, begin installing the Secondary Beams.
- 4.** Finally, when sufficient framing is erected, bracing and plywood are installed to achieve a pour-ready system.



BEAM REMOVAL AND CYCLING BENEFITS



- TITAN's quick-release Drophead allows for removal of framing members as early as one day after the pour in accordance with ACI 301 section 2.3.2.5.
- The system can be cycled, requiring less framing equipment. TITAN framing shores can stay behind for use as reshores.
- The Drophead eliminates falling materials typically associated with stripping operations, making it safer and easier to recover framing members.
- TITAN equipment loads directly in and out of barella's, never hitting the ground.



DROP PANELS

can efficiently be hung from slab framing with our hanger system.



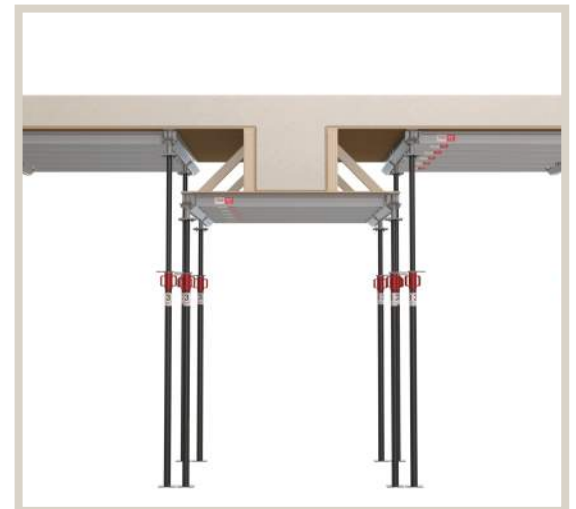
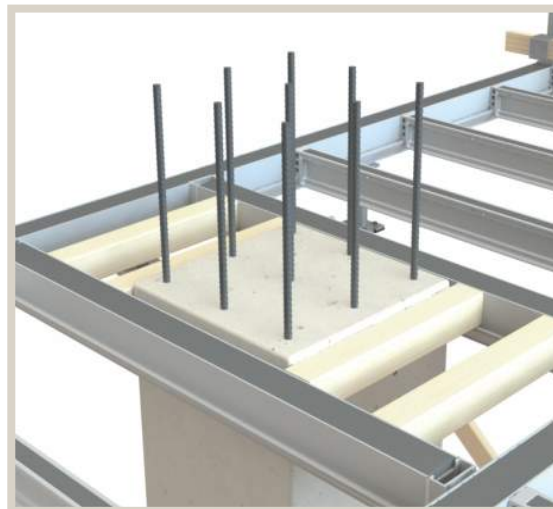
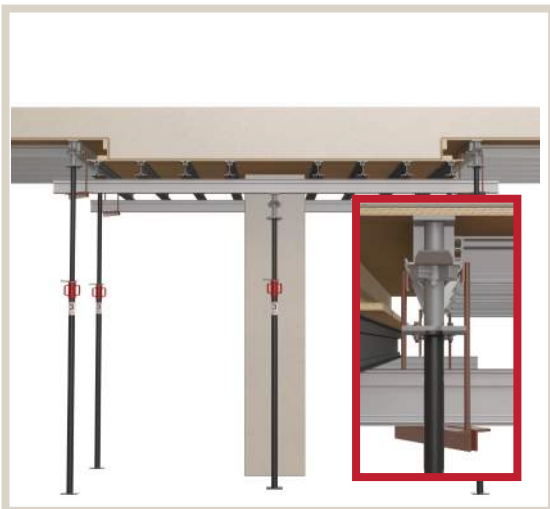
SIMPLE FILLER CONDITIONS

with a 4x4 span between main beams.



BEAMS

can be installed as independent framing.





BEAM BRACKET

spandrel beam framing can be incorporated into the slab framing.



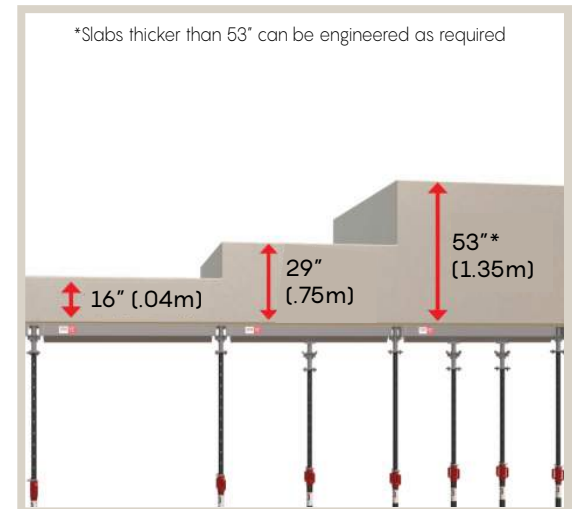
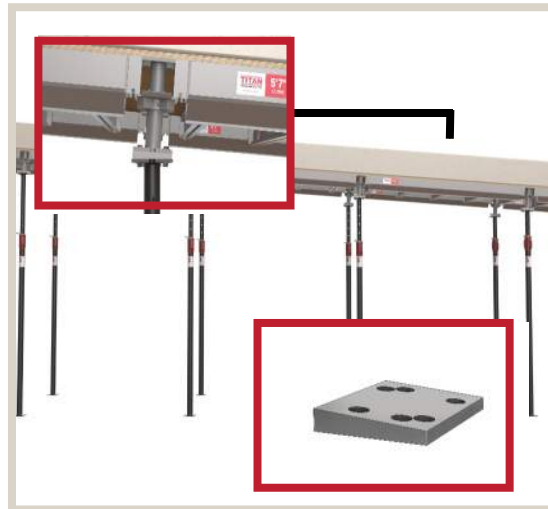
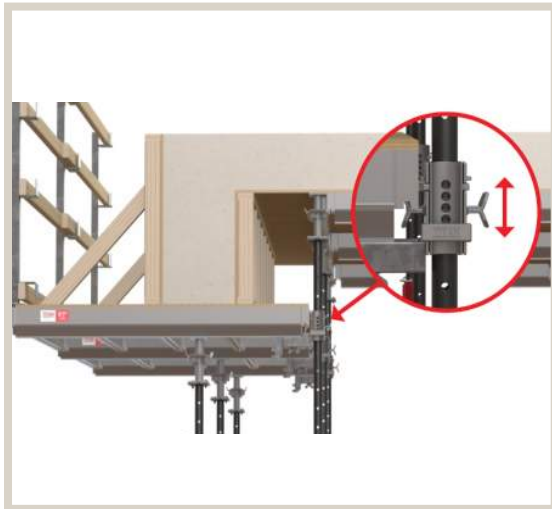
SLOPES

up to 12% are accommodated with TITAN's wedge.

TITAN HV
EQUIPPING
BUILDERS TO
SUCCEED

THICKER SLABS

can easily be supported with standard framing members.





TITAN

formwork systems

WE PROVIDE EXPERT ON SITE TRAINING TO ENSURE YOU WILL **SUCCEED**

CONTACT US:
titanformwork.com
480.305.1900