

ESTD  1928

De BORTOLI

FAMILY WINEMAKERS

....

De Bortoli Overview.

Presented by Lindsay Gullifer

2018

De Bortoli Wines Bilbul



ESTD  1928
DeBORTOLI
FAMILY WINEMAKERS



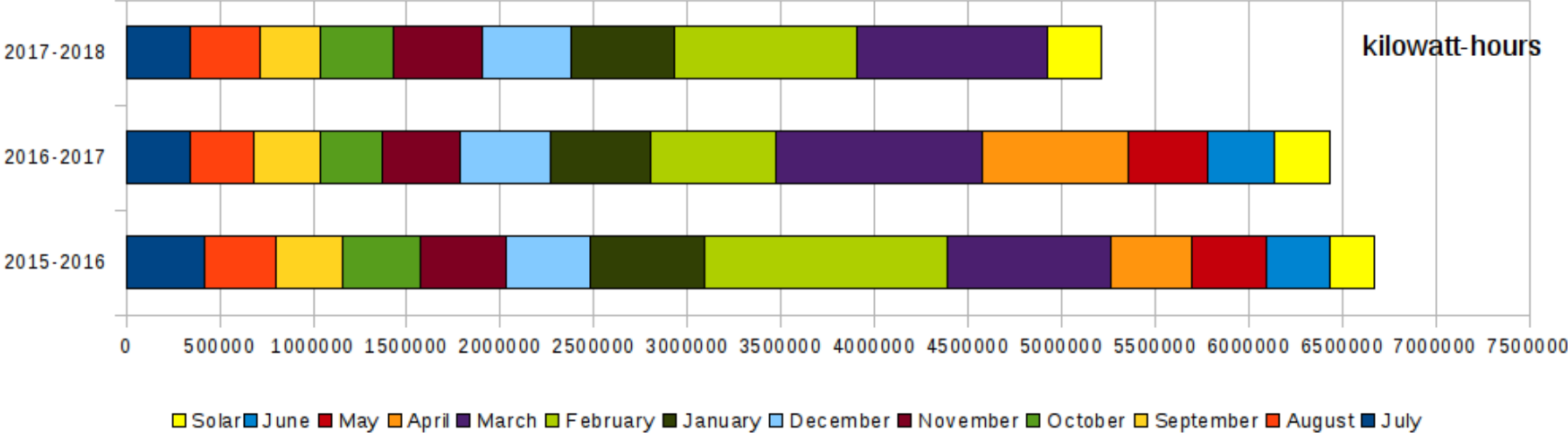
FOUR GENERATIONS OF WINEMAKING

Winery Overview

- Crush 50,000-65,000 tonnes.
- Electricity usage 6,500,000 - 8,000,000 kwh
- Package 35,000,000 - 45,000,000 litres of wine per annum. Approx 50% soft pack, 50% glass.
- Holding capacity 150,000,000 million litres.
- Energy usage profile. Peak vintage Mid January - end of March.
- Currently Seven Transformers in 1000,1500kVA size, five billing points.

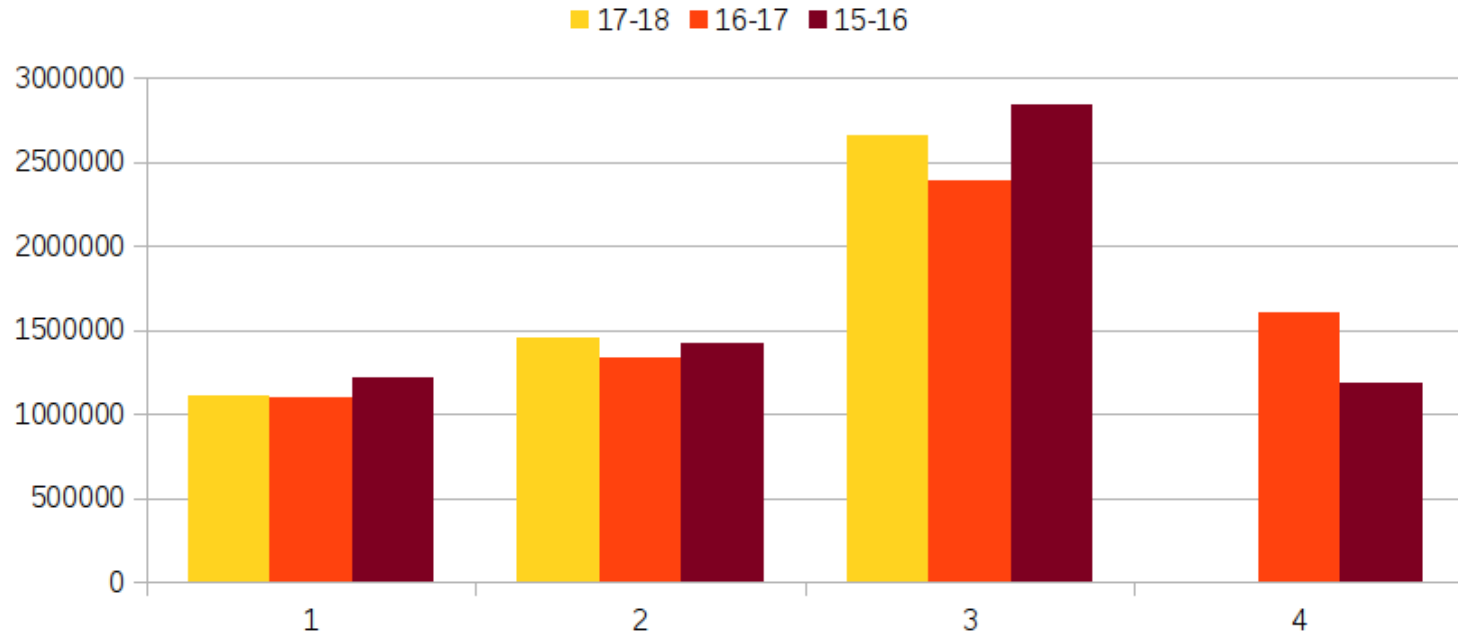
Electricity profile Monthly

De Bortoli Wines Energy



Energy profile Quarters

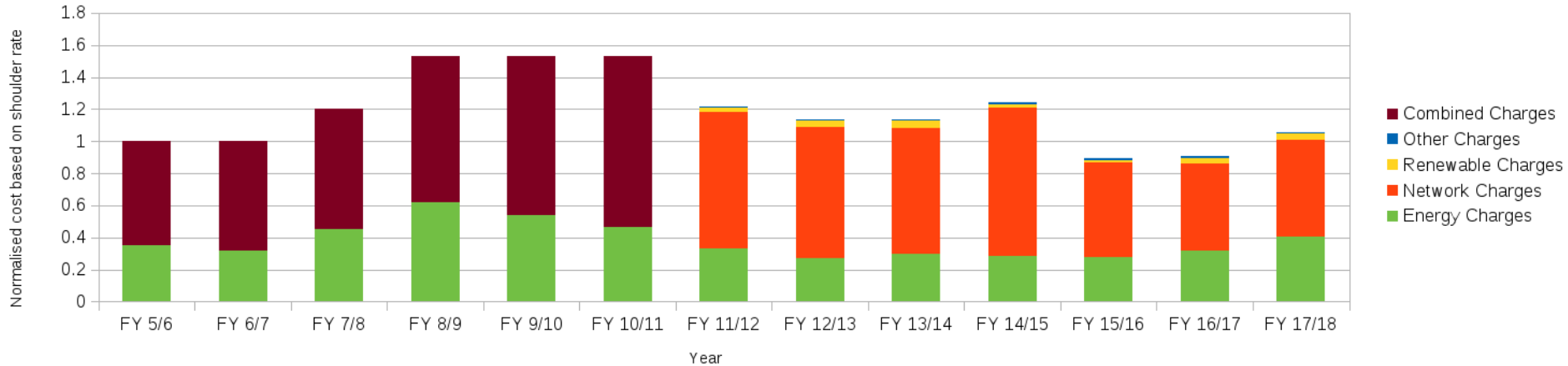
De Bortoli Wines Quarterly Electricity Consumption



Energy Costs

- Contestibles are only a small part of the bill
- Charges vary by supplier

Energy Bill Components for Debortoli Wines



What DBW would like to see in the energy arena.

- Simple solutions....we are not energy managers and don't want to devote much time to making the best decisions
- Not to constantly feel to be at a purchasing disadvantage. The market always feels skewed against the consumer.
- Equitable access to the grid eg $\$/(\text{kVA}/\text{km})$ to allow direct purchasing or divesting of power to local or alternate sources of supply. Distribution and grid losses to the incumbents is significant regionally. A grid independent of generators/retailers makes sense to avoid conflicts of interest.
- Don't wish to be locked in to long term contracts especially on the renewable side as the both ourselves and the market is still adapting

Thank-you
Questions?