

SAMMAMISH RIDGE E S T A T E S

With Suver & Burnstead, the beauty is in the details...
the many, marvelous details.

Estate-worthy Living

Pass through an exclusive gated entry to this limited collection of privacy-graced, estate-sized homesites - each further enhanced by private lakefront access with deeded dock and moorage. East Lake Sammamish Trail-linked recreation is within easy walking distance – and commutes to downtown Redmond, Microsoft and Highway 520 are close and quick.

Gourmet Kitchen

Host the grandest of entertainment with an array of Wolfe stainless steel appliances, including a 48-inch duel fuel range, microwave, warming oven, and ASKO dishwasher – plus a Subzero 48-inch built-in refrigerator and under-counter beverage center. Custom rift oak cabinets with dovetailed drawers and soft-close hinges accentuate the massive island with custom steel and rift oak eating bar, toned quartz counter tops and full height limestone backsplash. The 12 ft. Nana-wall opens onto an expansive covered deck with precast pavers and radiant ceiling heaters. Gorgeous views of Lake Sammamish through the glass enclosed railing will provide the perfect backdrop to outdoor entertaining.

Impeccable Interiors

From subtle to bold, dramatic vaulted ceilings reign over the foyer, formal dining room and great room, accented with exposed steel columns and beams. Natural light floods the home interiors through expansive lake view and clerestory windows. All three fireplaces boast custom face details, while a main level library provides a quiet retreat. The lower level features a generous rec room with adjoining wine cellar and wet bar. Relax in the cedar-lined sauna after a workout in the adjacent exercise room.

Unparalleled Finishes

Brilliantly crafted millwork and detailing spans throughout the home. An impressive 12ft-tall stone accent wall anchors the great room fireplace and becomes the focus of the formal areas, while the dramatic floating steel stair with custom steel railing and solid oak treads provide a graceful transition into the upper level living spaces. Rift oak doors, custom cabinets and designer chosen finishes blend seamlessly and emphasize the commitment to quality.

Magnificent Master Suites

Enjoy breathtaking views of Lake Sammamish through the expansive windows in the main floor master suite. Revel in the warmth of the contemporary gas fireplace with full height limestone tile. Dramatic bath amenities include a 10 ft.-tall marble shower featuring full-height glass panel wall's, zero-entry floor and infinity drain, floating rift oak vanities with quartz slab counters and custom mirror surround. The generous master closet features built-in California closet systems with center-island and slab top.

Exquisite Exteriors, Energy Efficiency and More

Architectural elegance meets ultimate technology throughout. Exquisite clear cedar siding and soffits, standing seam metal roof, Pella clad wood windows, stone and stucco highlight the streetscape – while the covered main floor waterproofed deck features radiant ceiling heaters for multi-season use. A 3-car garage includes ample space to store your vehicles with a separate overhead door providing easy access to the spacious and sunny back yard. Radiant floors maintain comfortable temperatures throughout the lower level, while a high-efficiency gas furnace and air conditioner provide year round comfort for the main and upper levels. Extensive LED lighting throughout the interior and exterior fixtures deliver longer life and energy efficiency.

SAMMAMISH RIDGE E S T A T E S



The Del Mar HOMESITE 12 | 3.7 ACRES

18811 NE 49th Place
Sammamish, WA 98074

\$ 3,795,000

Kathleen Pennington
(425) 890-2122
KATHLEENPENNINGTON@MSN.COM
www.burnstead.com

John L. Scott
REAL ESTATE

Main Floor
3,421 Sq. Ft.



Lower Floor
1,426 Sq. Ft.



Upper Floor
1,055 Sq. Ft.



The Del Mar

- 5,902 sq. ft. finished living space
- 5 bedrooms
- 5.5 baths
- 3-car garage - 990 sq. ft.
- Great room, formal dining room & library
- Main floor master suite
- Rec room, exercise room, sauna and wine room
- Large covered deck & covered lower patio
- Optional 2-car garage with carriage house

HIGHLIGHTS

Deeded lakefront community dock with private moorage slip for each homesite

Award-winning programs in Lake Washington School District's Blackwell Elementary, Ingelwood Middle and Eastlake High Schools

Close proximity to downtown Redmond, Highway 520 and Microsoft; walking distance to East Lake Sammamish Trail

Private gated community with estate homesites

www.burnstead.com

The Burnsteads, in an effort to continuously improve our homes, reserves the right to change or modify floor plans, elevations and specifications without notice or obligation. Dimensions and square footage are approximate. Decorative architectural features are optional and should be verified per plan. Plans and elevations are artist illustrations and may not be to scale or drawn with the same construction materials that this home will be built with. See our sales representative for more information.

SAMMAMISH RIDGE E S T A T E S



Optional Detached Carriage House

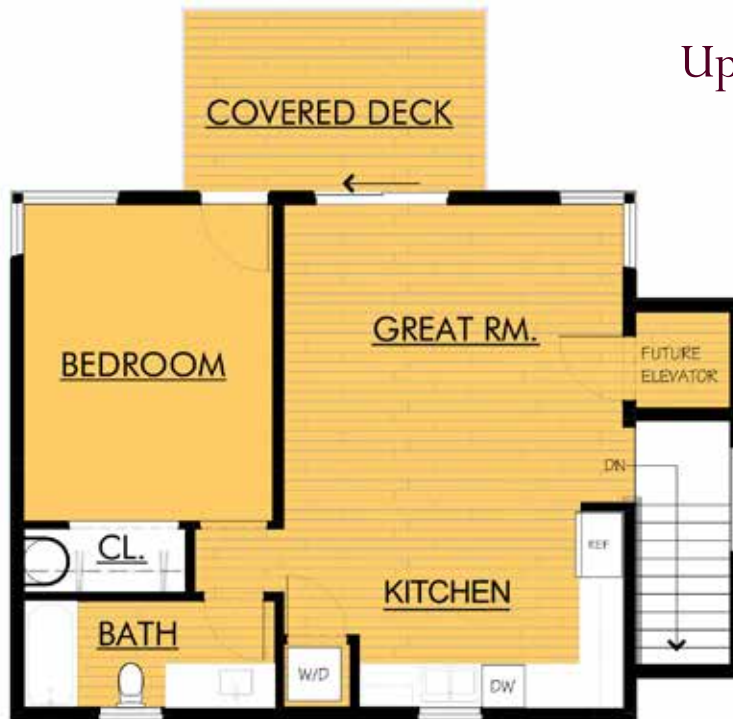
- 867 sq. ft. finished living space
- 1 bedroom | 1 bath
- Covered view deck
- 2-car garage - 696 sq. ft.
- Living room
- kitchenette
- Future elevator option

www.burnstead.com

The Burnsteads, in an effort to continuously improve our homes, reserves the right to change or modify floor plans, elevations and specifications without notice or obligation. Dimensions and square footage are approximate. Decorative architectural features are optional and should be verified per plan. Plans and elevations are artist illustrations and may not be to scale or drawn with the same construction materials that this home will be built with. See our sales representative for more information.

SAMMAMISH RIDGE ESTATES

Upper Floor



Main Floor

