



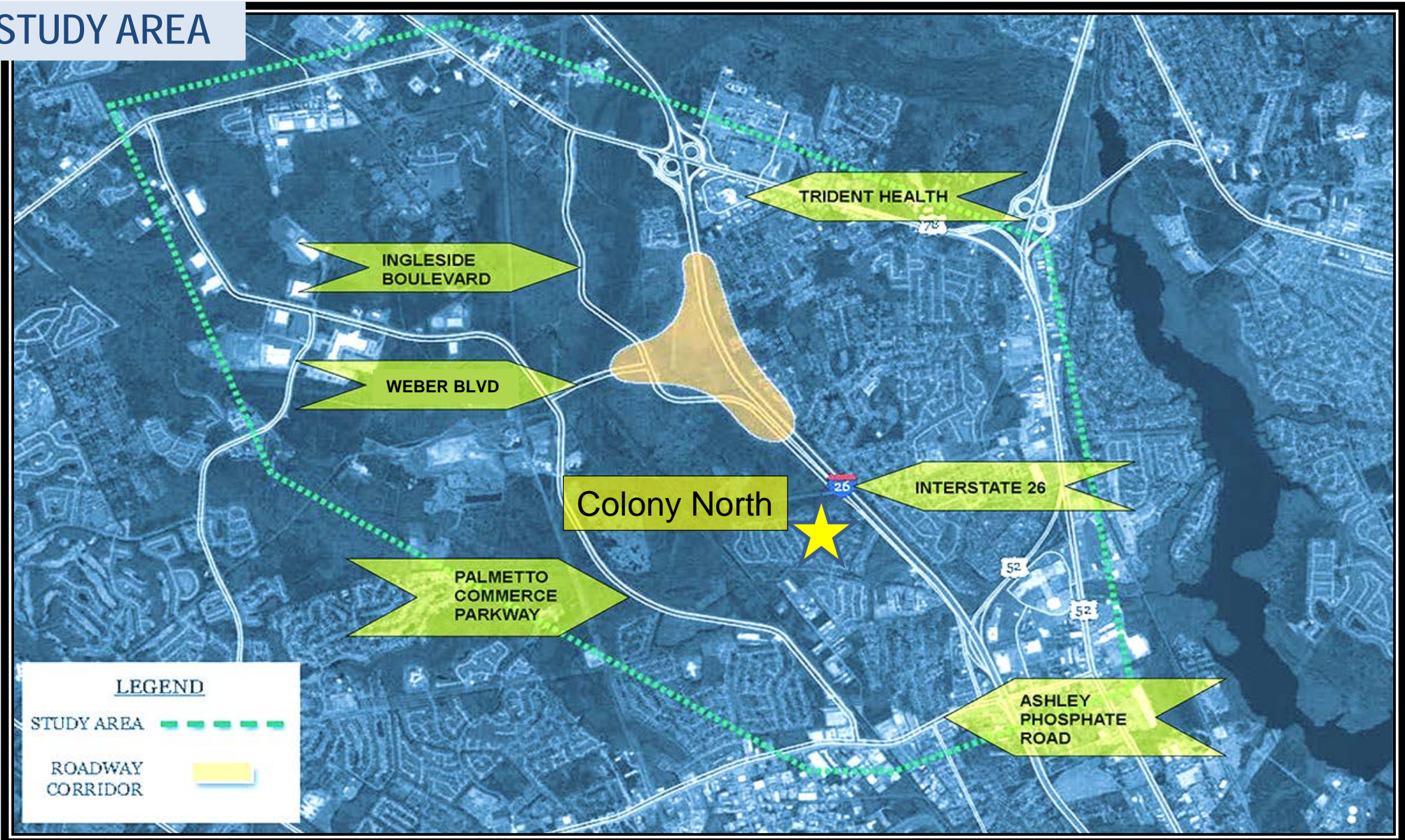
**Charleston County**  
Transportation Development

# Palmetto Commerce Interchange Colony North Homeowners Association Meeting

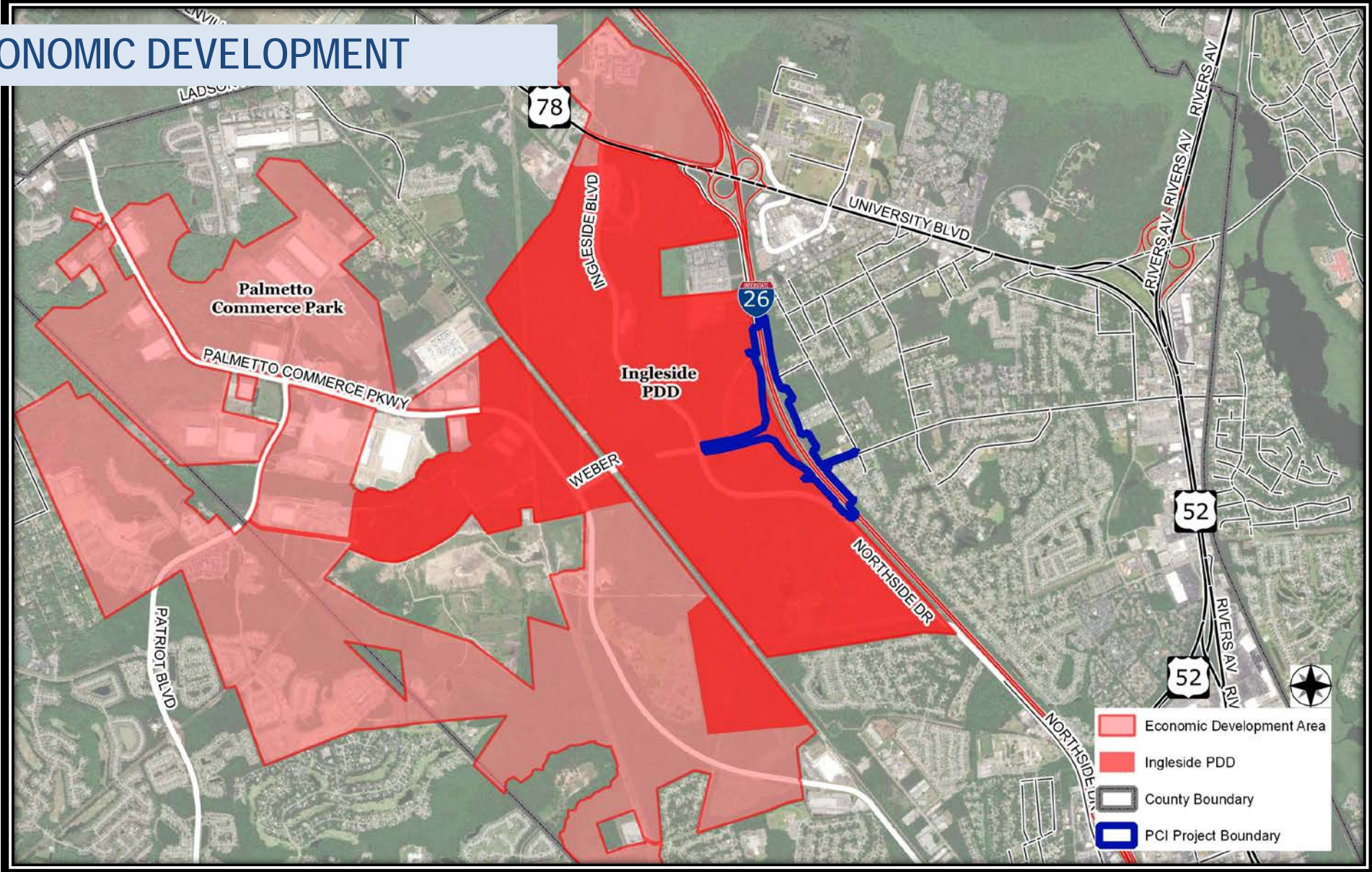
February 4, 2019 at 7 PM



# STUDY AREA



# ECONOMIC DEVELOPMENT



# TRUMPET INTERCHANGE CONCEPT



# TRUMPET INTERCHANGE CONCEPT

Looking East



Looking Towards I-26 Eastbound



Looking Towards I-26 Westbound



Looking West



# DIVERGING DIAMOND INTERCHANGE CONCEPT

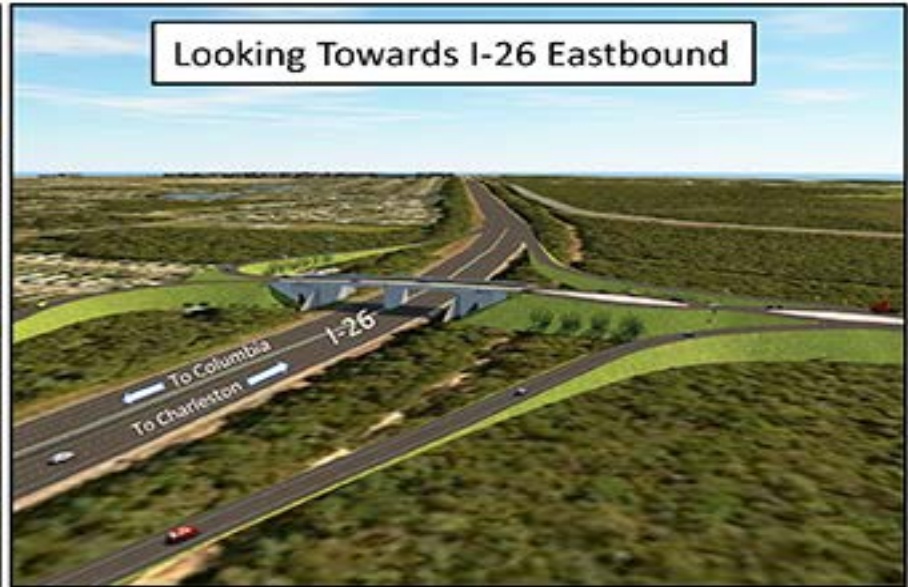


# DIVERGING DIAMOND INTERCHANGE CONCEPT

Looking East



Looking Towards I-26 Eastbound



Looking Towards I-26 Westbound



Looking West



# URBAN DIAMOND INTERCHANGE CONCEPT





# URBAN DIAMOND INTERCHANGE CONCEPT

Looking East



Looking Towards I-26 Eastbound



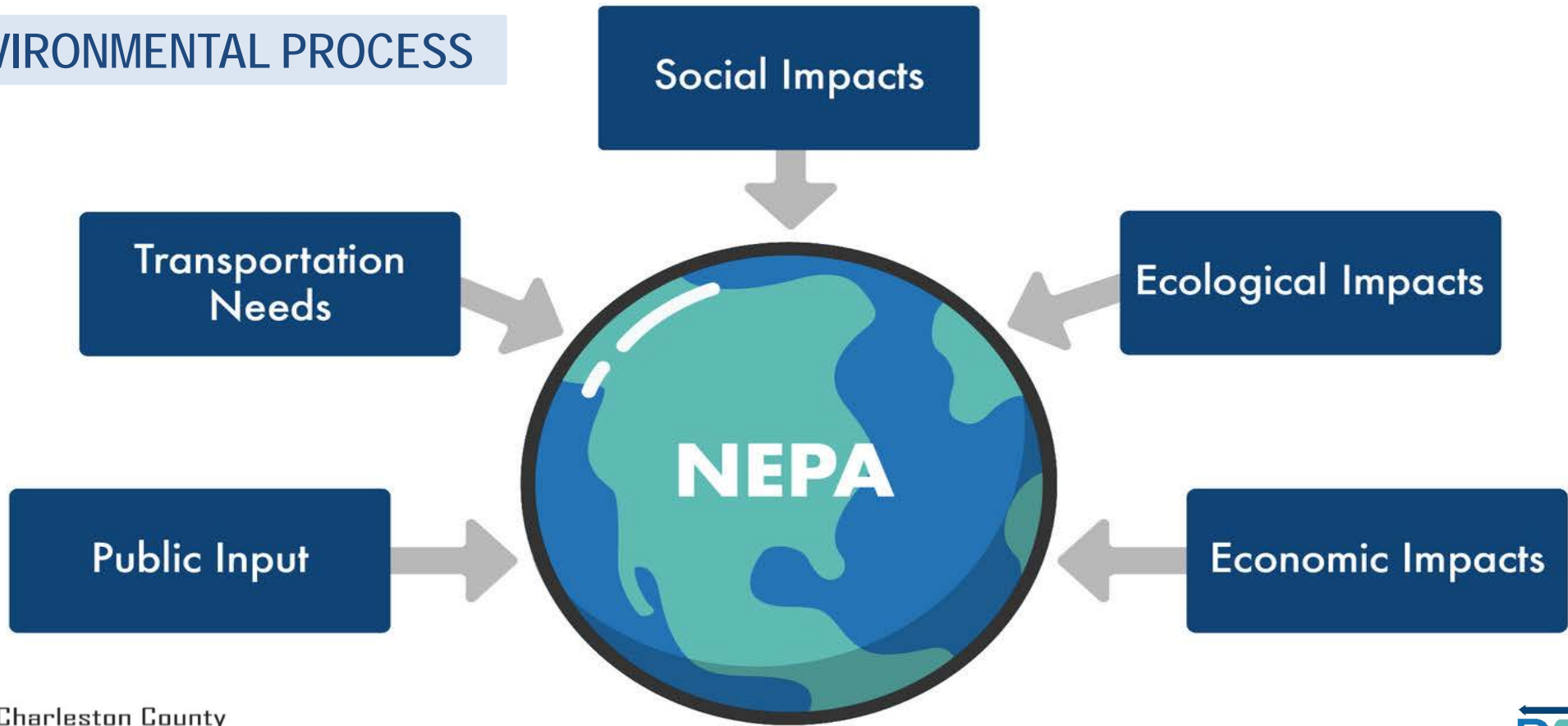
Looking Towards I-26 Westbound



Looking West



# ENVIRONMENTAL PROCESS



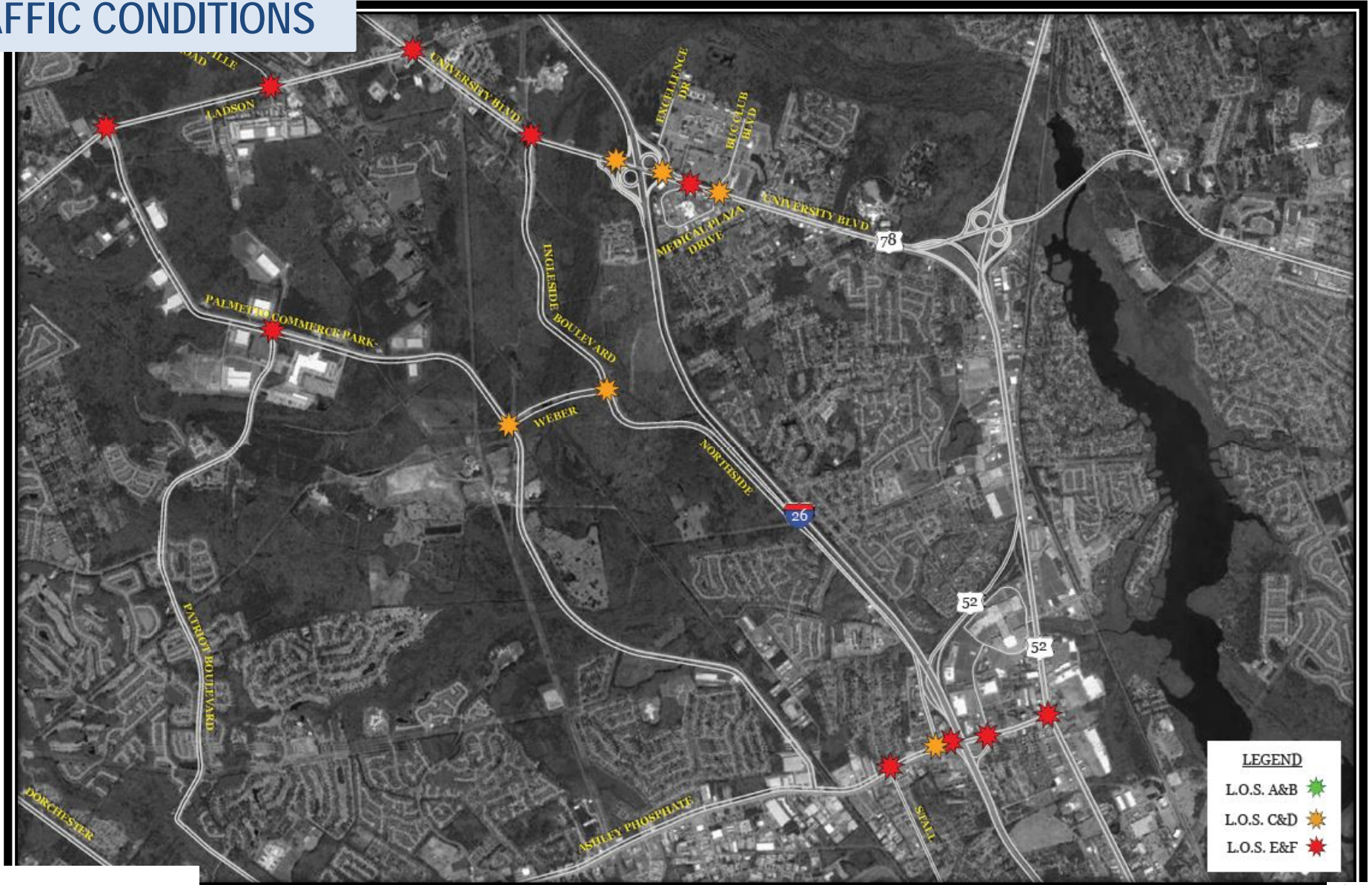
- Air Quality
- Biotic Resources
- Coastal Resources
- Endangered & Threatened Species
- Natural Resources
- Farmland
- Wetlands
- Wild & Scenic Rivers
- Community Impacts
- Induced Socioeconomic Impacts
- Energy Supplies
- Floodplains
- Hazardous Materials
- Solid Waste
- Water Quality
- Compatible Land Use
- Recreational Resources
- Environmental Justice
- Historic, Architectural, Archaeological or Cultural Property
- Light Emissions & Visual Effects
- Noise



# AMBIENT NOISE READING LOCATIONS



# TRAFFIC CONDITIONS



# Northside Drive– Traffic Analysis

## Northside Drive Traffic Improvements

	AM Peak Hour Traffic (Veh/hour)				% Reduction	
	2020		2040		2020	2040
	No-Build	Build	No-Build	Build		
<b>Northbound</b>	<b>650</b>	<b>340</b>	<b>741</b>	<b>661</b>	<b>48%</b>	<b>11%</b>
<b>Southbound</b>	<b>832</b>	<b>387</b>	<b>949</b>	<b>599</b>	<b>53%</b>	<b>37%</b>

	PM Peak Hour Traffic (Veh/hour)				% Reduction	
	2020		2040		2020	2040
	No-Build	Build	No-Build	Build		
<b>Northbound</b>	<b>727</b>	<b>463</b>	<b>829</b>	<b>511</b>	<b>36%</b>	<b>38%</b>
<b>Southbound</b>	<b>577</b>	<b>320</b>	<b>658</b>	<b>346</b>	<b>45%</b>	<b>47%</b>

# Northside Drive & Ashley Phosphate Intersection– Traffic Analysis

**Table 12: AM Peak Hour Study Area Intersection LOS & Delay - No-Build & Build Conditions**

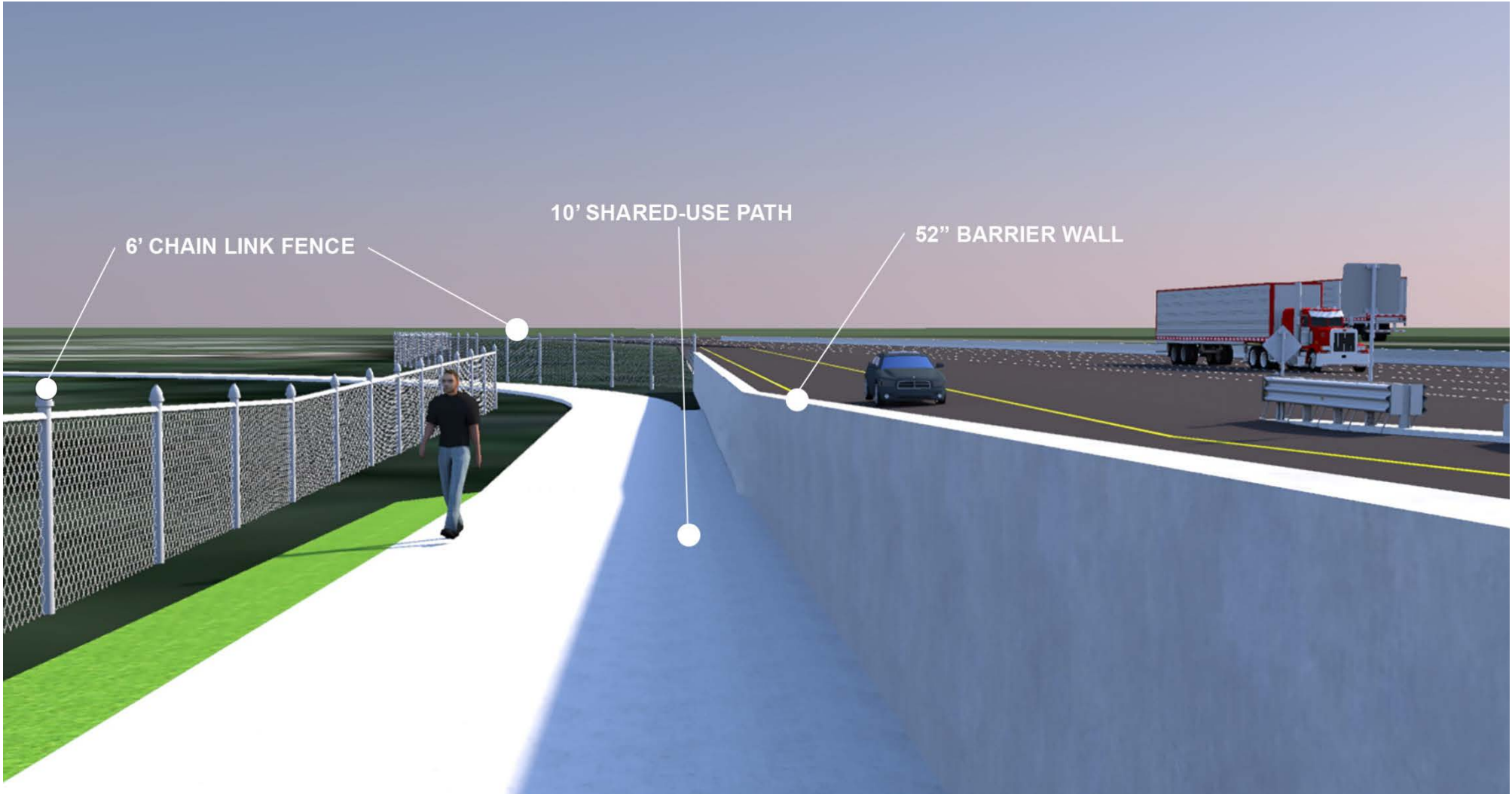
Intersection	AM Peak Hour LOS/Delay								Peak Hour Volume Comparison		
	2020 No-Build		2020 Build		2040 No-Build		2040 Build		Total Demand Volume All Approaches (vph)		
	LOS	Delay <sup>1</sup> (sec)	LOS	Delay <sup>1</sup> (sec)	LOS	Delay <sup>1</sup> (sec)	LOS	Delay <sup>1</sup> (sec)	2040 No-Build	2040 Build	% Increase/ (% Decrease)
Ashley Phosphate Rd & Northside Dr	D	38.4	C	30.0	D	47.7	C	35.0	7,165	5,290	-26.17%

**Table 13: PM Peak Hour Study Area Intersection LOS & Delay - No-Build & Build Conditions**

Intersection	PM Peak Hour LOS/Delay								Peak Hour Volume Comparison		
	2020 No-Build		2020 Build		2040 No-Build		2040 Build		Total Demand Volume All Approaches (vph)		
	LOS	Delay <sup>1</sup> (sec)	LOS	Delay <sup>1</sup> (sec)	LOS	Delay <sup>1</sup> (sec)	LOS	Delay <sup>1</sup> (sec)	2040 No-Build	2040 Build	% Increase/ (% Decrease)
Ashley Phosphate Rd & Northside Dr	C	27.2	C	25.6	C	28.6	C	27.0	6,454	4,991	-22.67%

AM and PM Traffic are Improved with new PCI Interchange

# WALKABLE / BIKEABLE BENEFITS



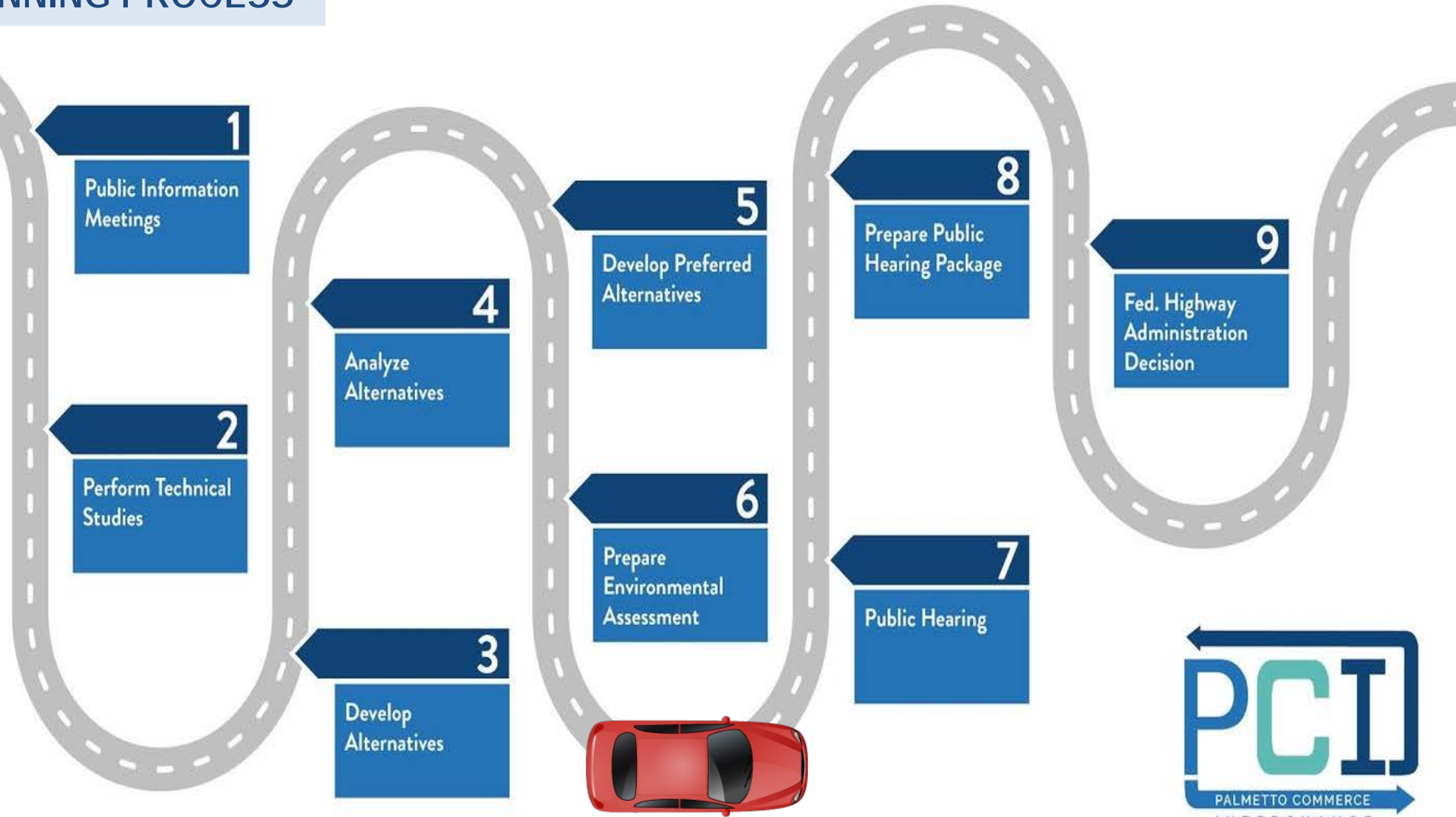
# NORTHSIDE DRIVE SIDEWALK

## Bid for Construction in 2020





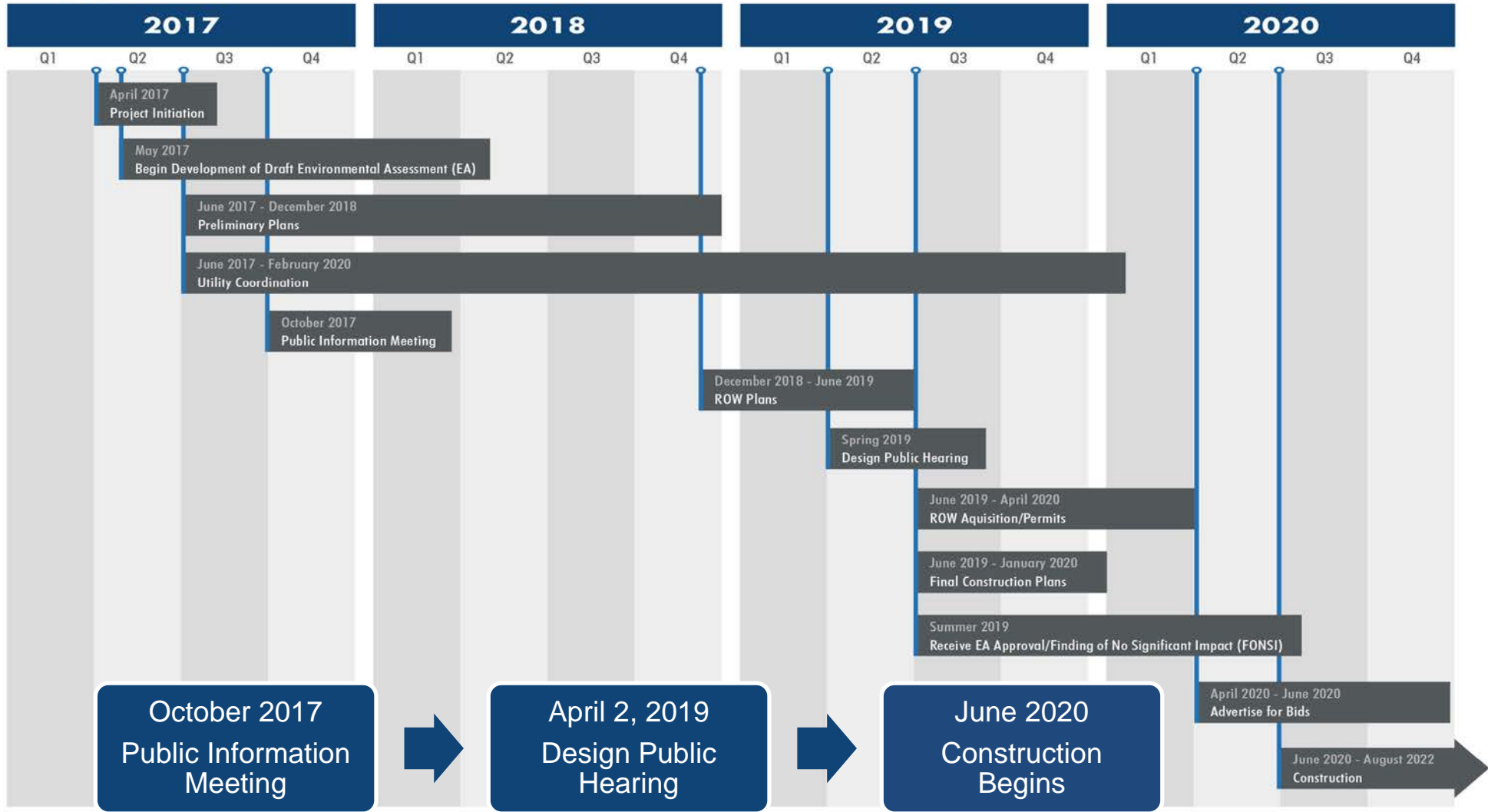
# PLANNING PROCESS





PROJECT TIMELINE

PROJECT TIMELINE & PUBLIC INVOLVEMENT



October 2017  
Public Information Meeting

April 2, 2019  
Design Public Hearing

June 2020  
Construction Begins

←-----Public Involvement Opportunities-----→

# THANK YOU!

Please visit the Palmetto Commerce Interchange web page for project details and updates:

[www.palmettocommerceinterchange.com](http://www.palmettocommerceinterchange.com)

(843) 202-6140