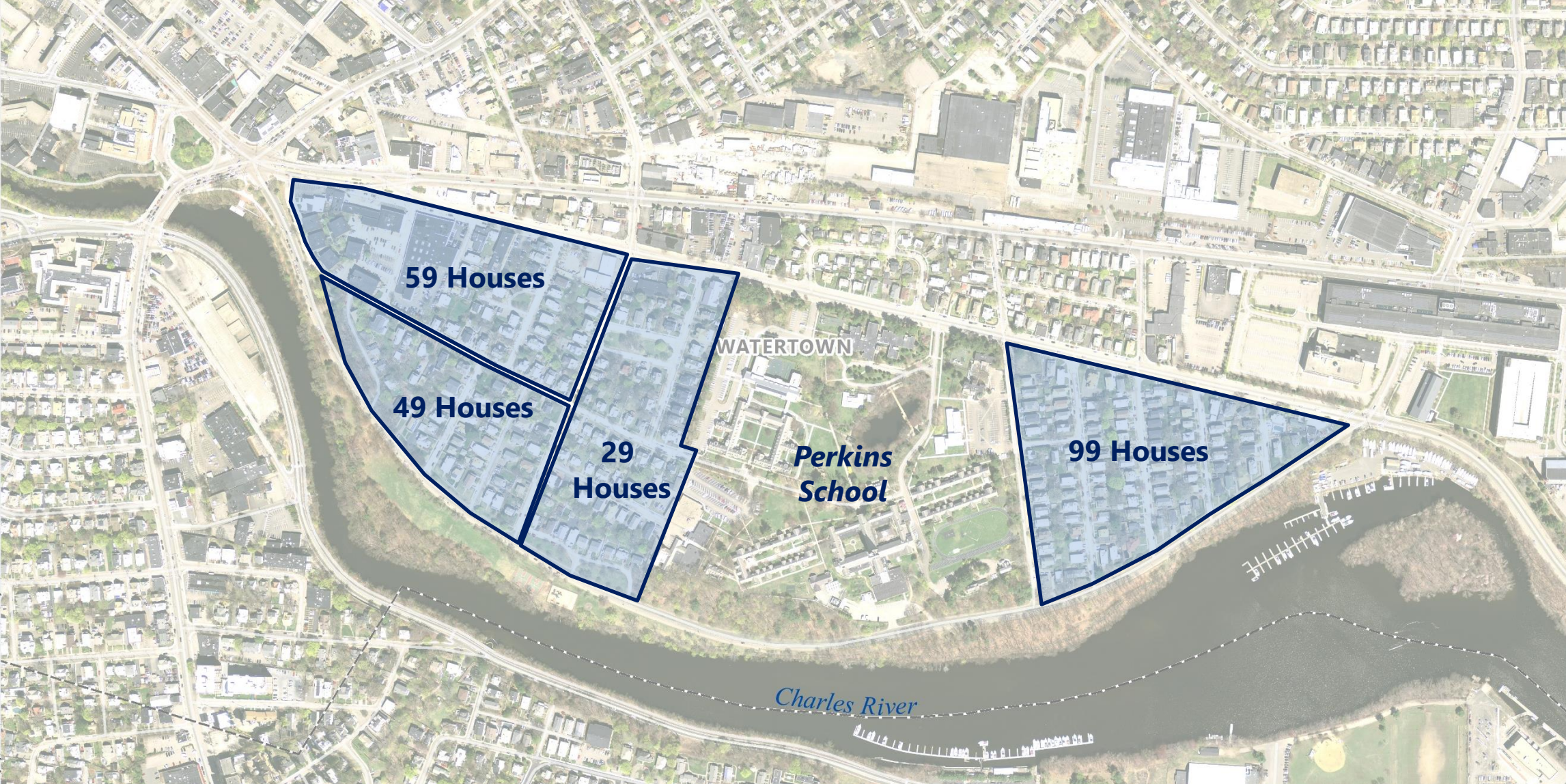
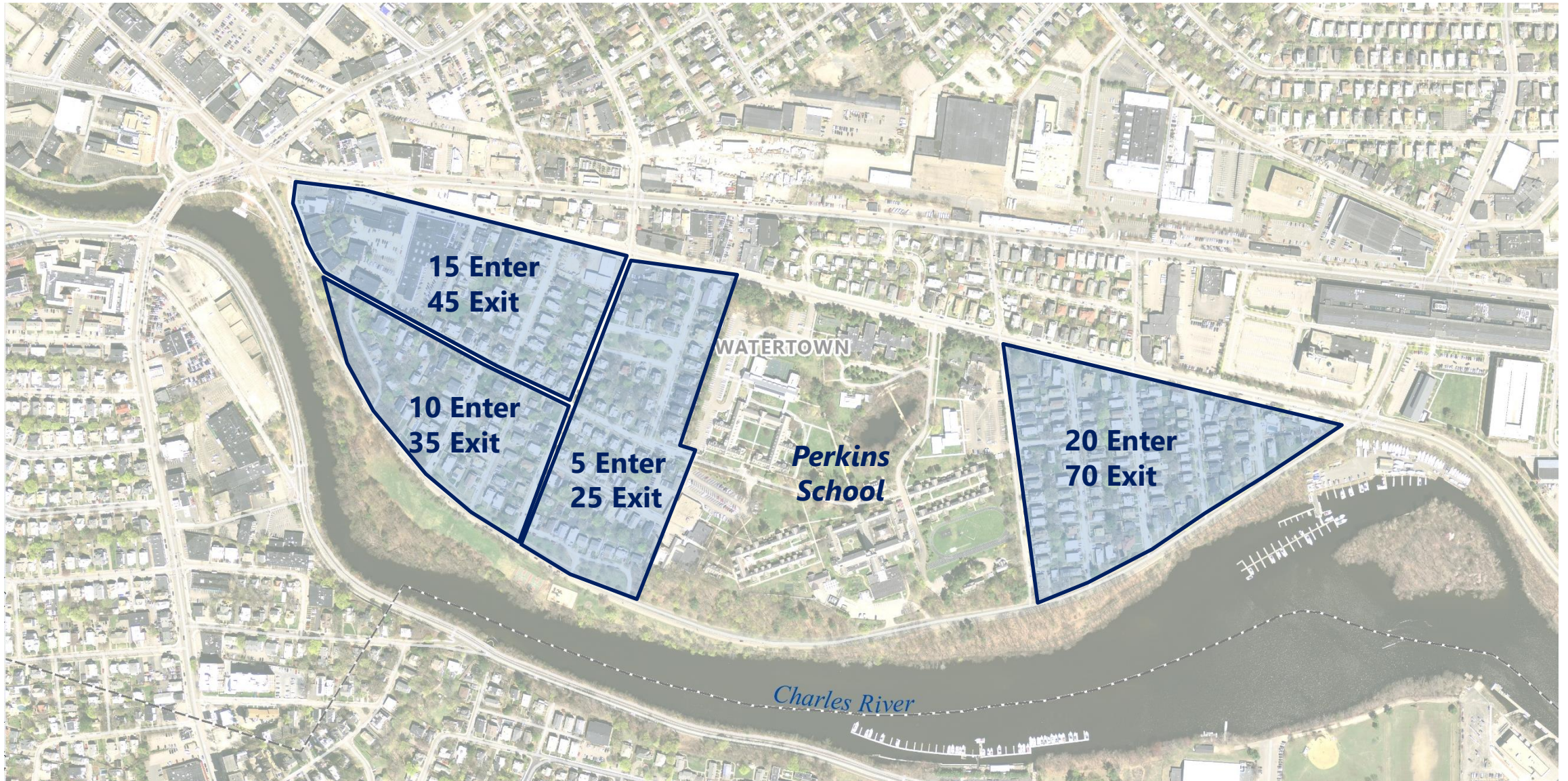


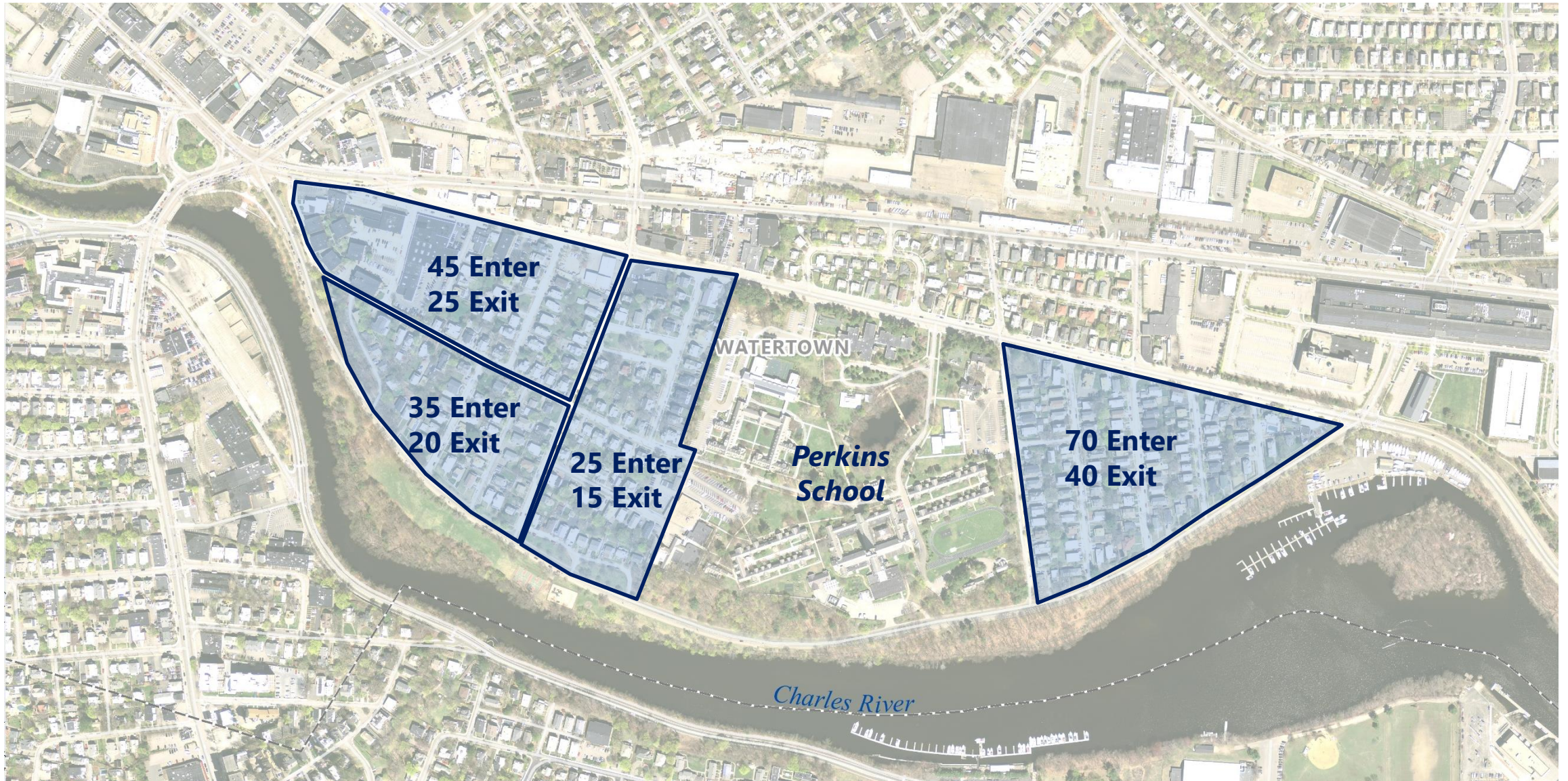
Neighborhood Density



Neighborhood Trips – Weekday Morning (7:45-8:45 AM)



Neighborhood Trips – Weekday Evening (4:45-5:45 PM)



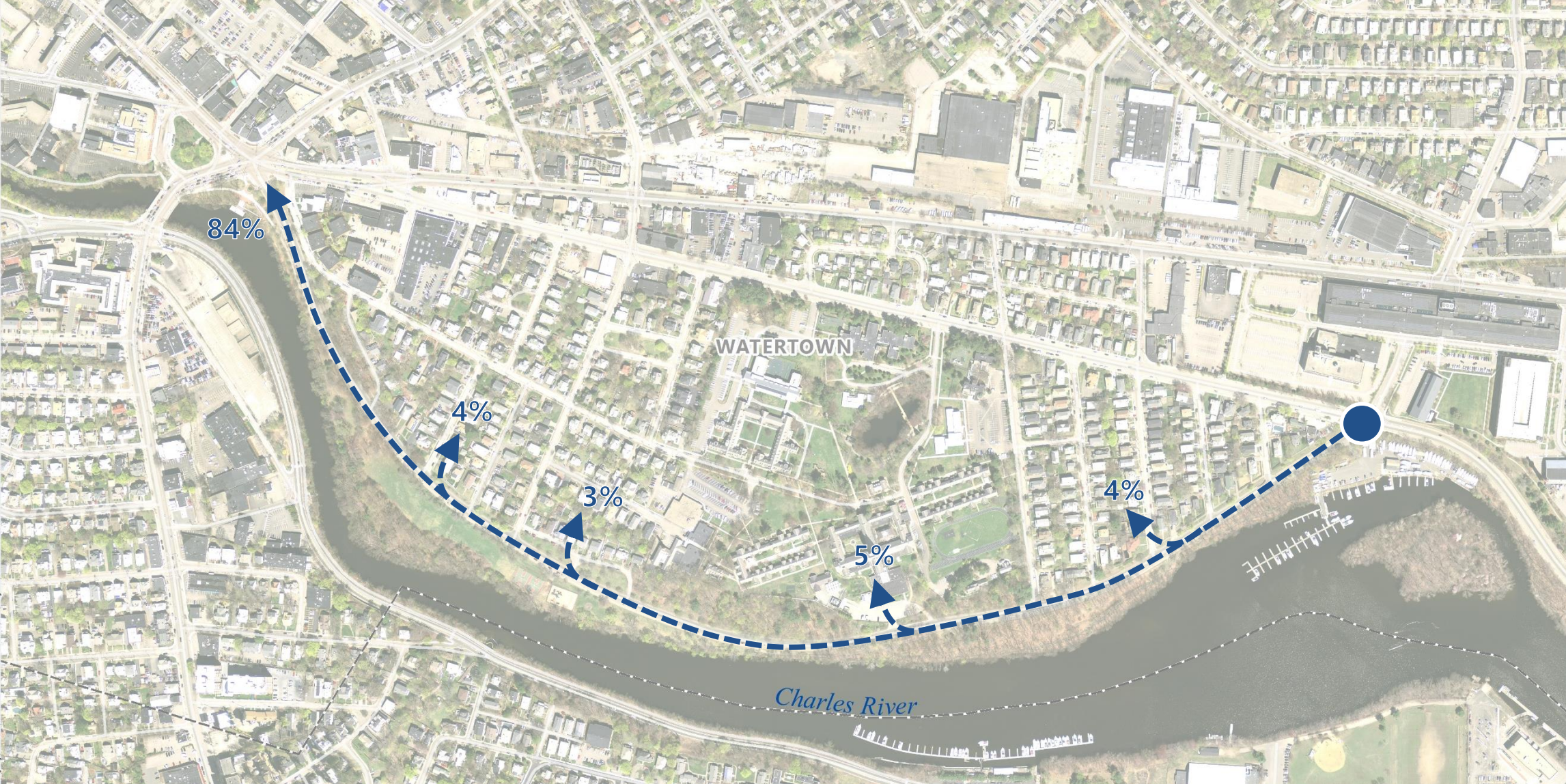
Traffic Flow – Weekday Morning (7:45-8:45 AM)



Traffic Flow – Weekday Morning (7:45-8:45 AM)



Traffic Flow – Weekday Evening (4:45-5:45 PM)



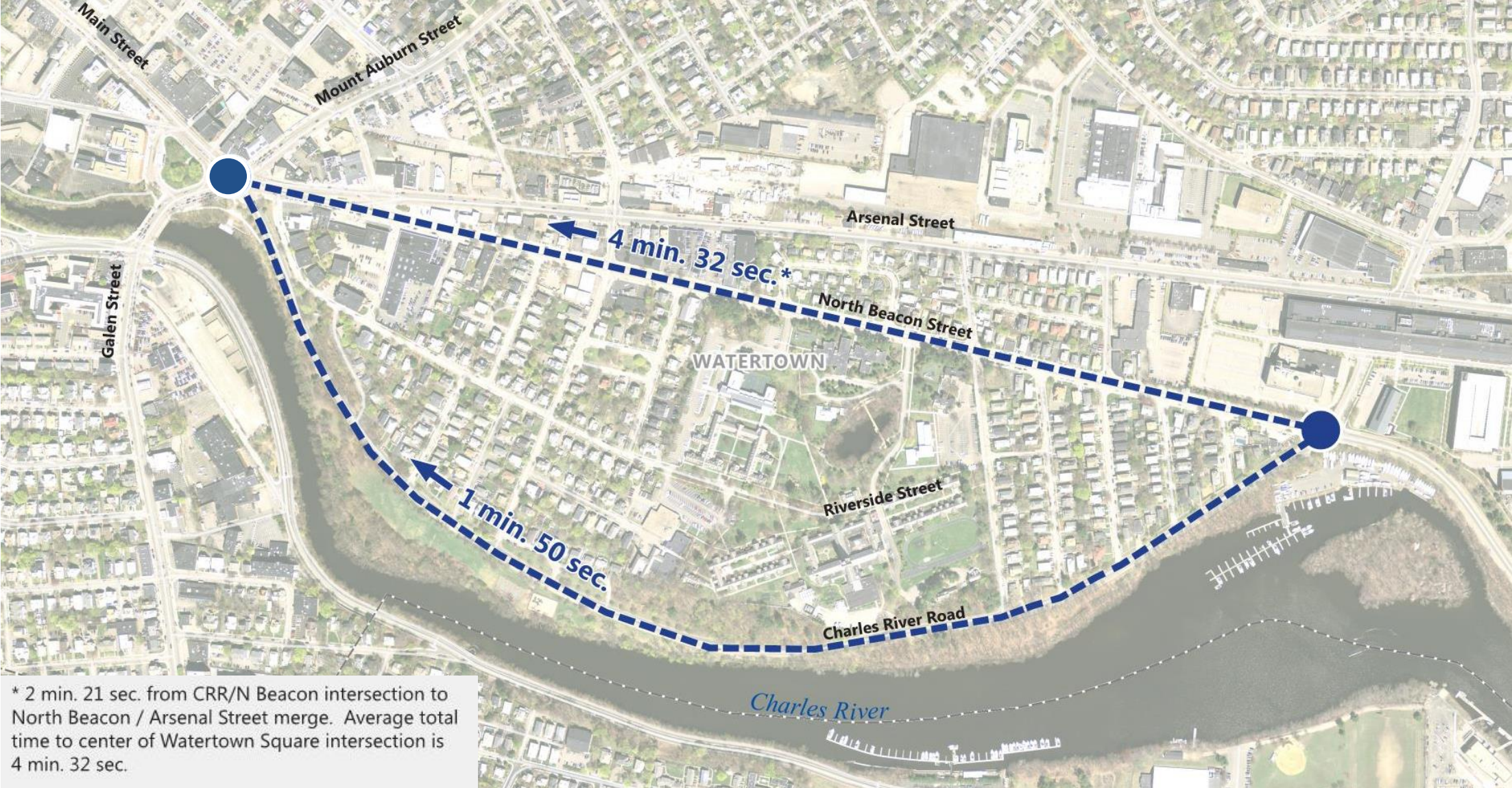
Traffic Flow – Weekday Evening (4:45-5:45 PM)



Travel Time – AM Peak Direction

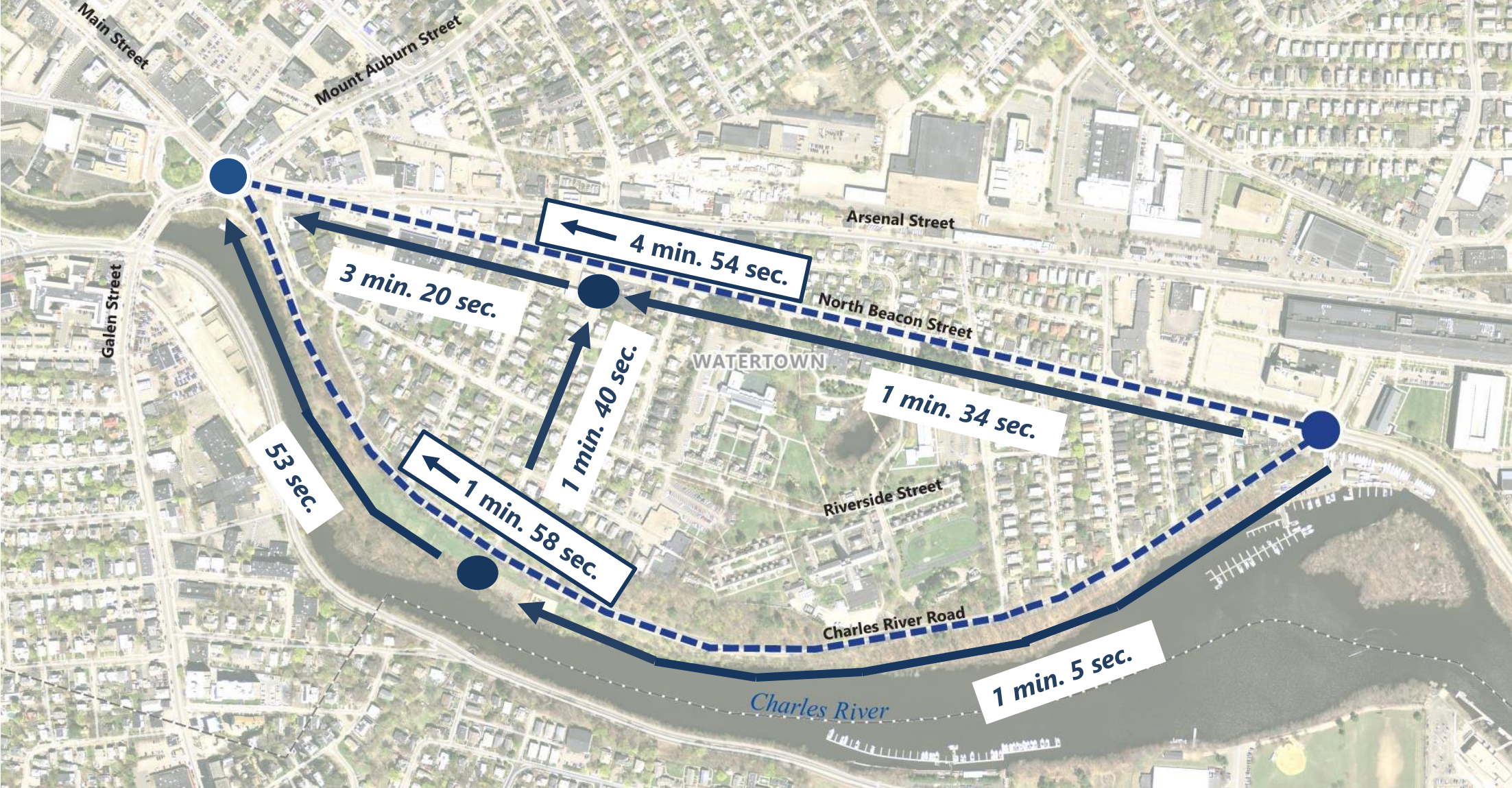


Travel Time – PM Peak Direction

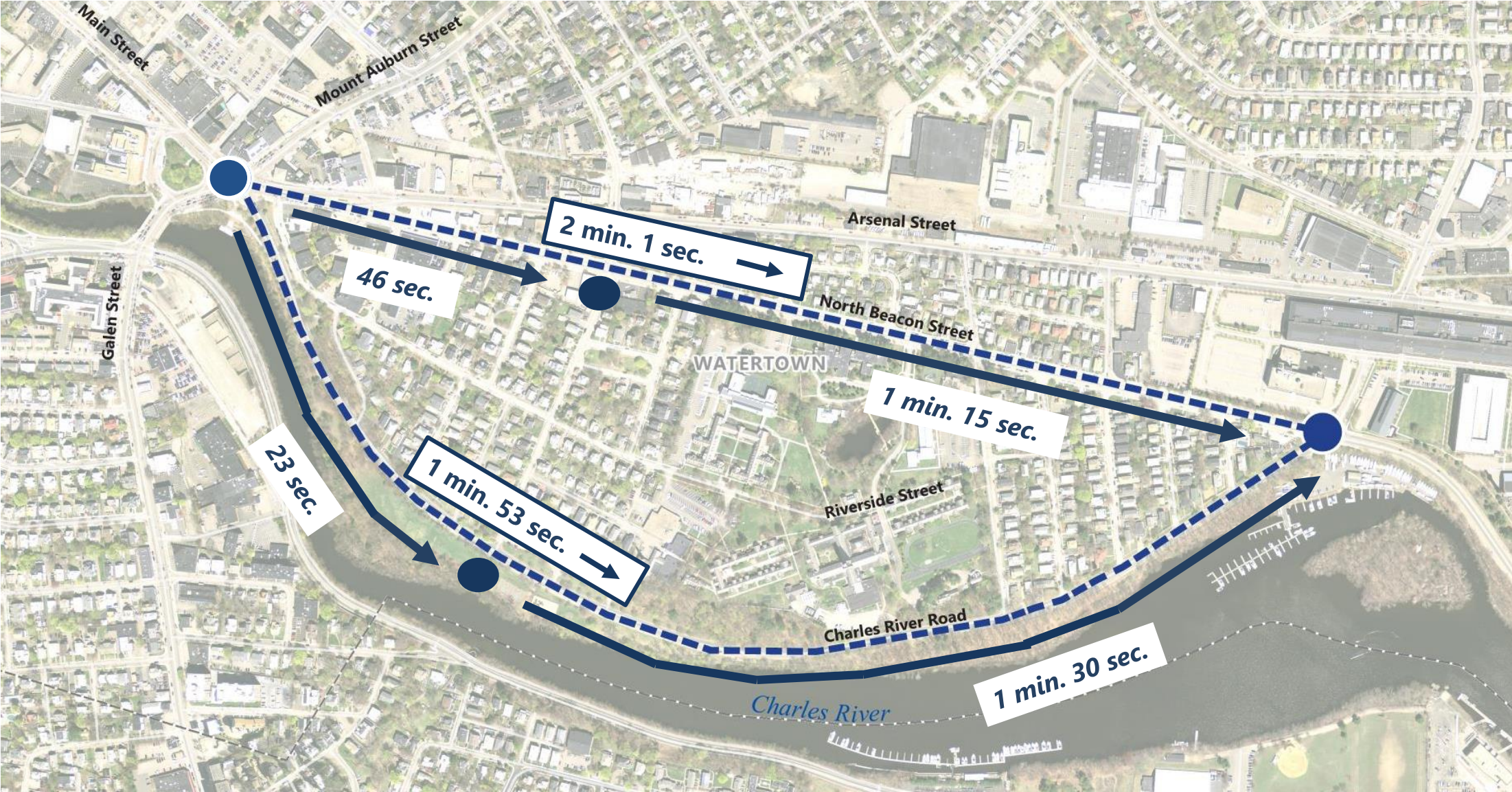


* 2 min. 21 sec. from CRR/N Beacon intersection to North Beacon / Arsenal Street merge. Average total time to center of Watertown Square intersection is 4 min. 32 sec.

Travel Time – PM Westbound Direction



Travel Time – PM Eastbound Direction





\\vhb\proj\Wat-TS\14059.00\Watertown-Base\GIS\Project\ArsenalStreetNetwork.mxd



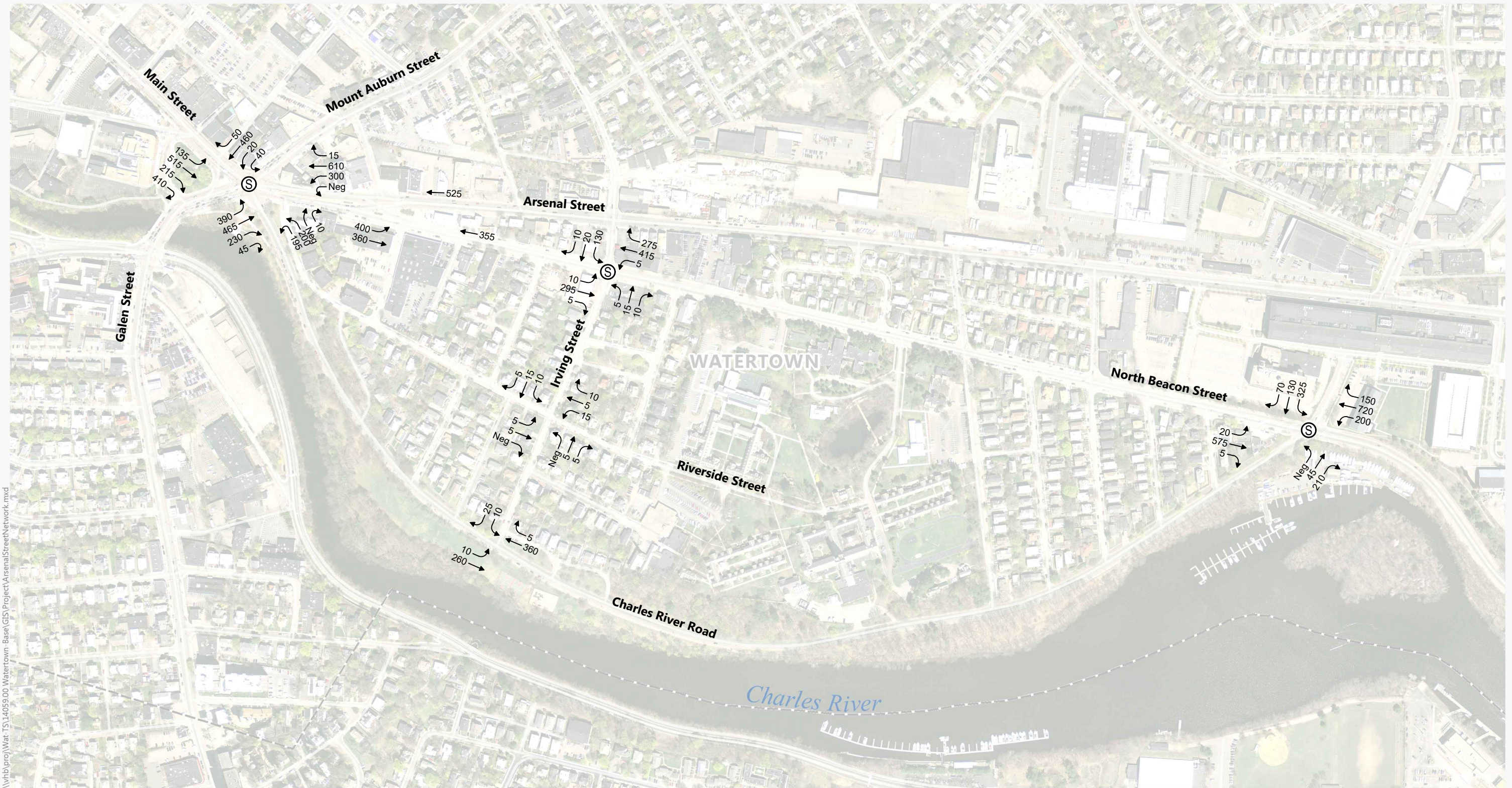
Neg = Negligible
Ⓢ Signalized Intersection

Arsenal Street Corridor Study

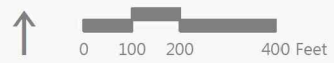
Watertown, Massachusetts

**Weekday Morning Peak Hour
Charles River Road**

Source: MassGIS



\\vhb\proj\Wat-TS\14059.00-Watertown-Base\GIS\Project\ArsenalStreetNetwork.mxd



Neg = Negligible
Ⓢ = Signalized Intersection

Arsenal Street Corridor Study

Watertown, Massachusetts

Weekday Evening Peak Hour Charles River Road

Source: MassGIS