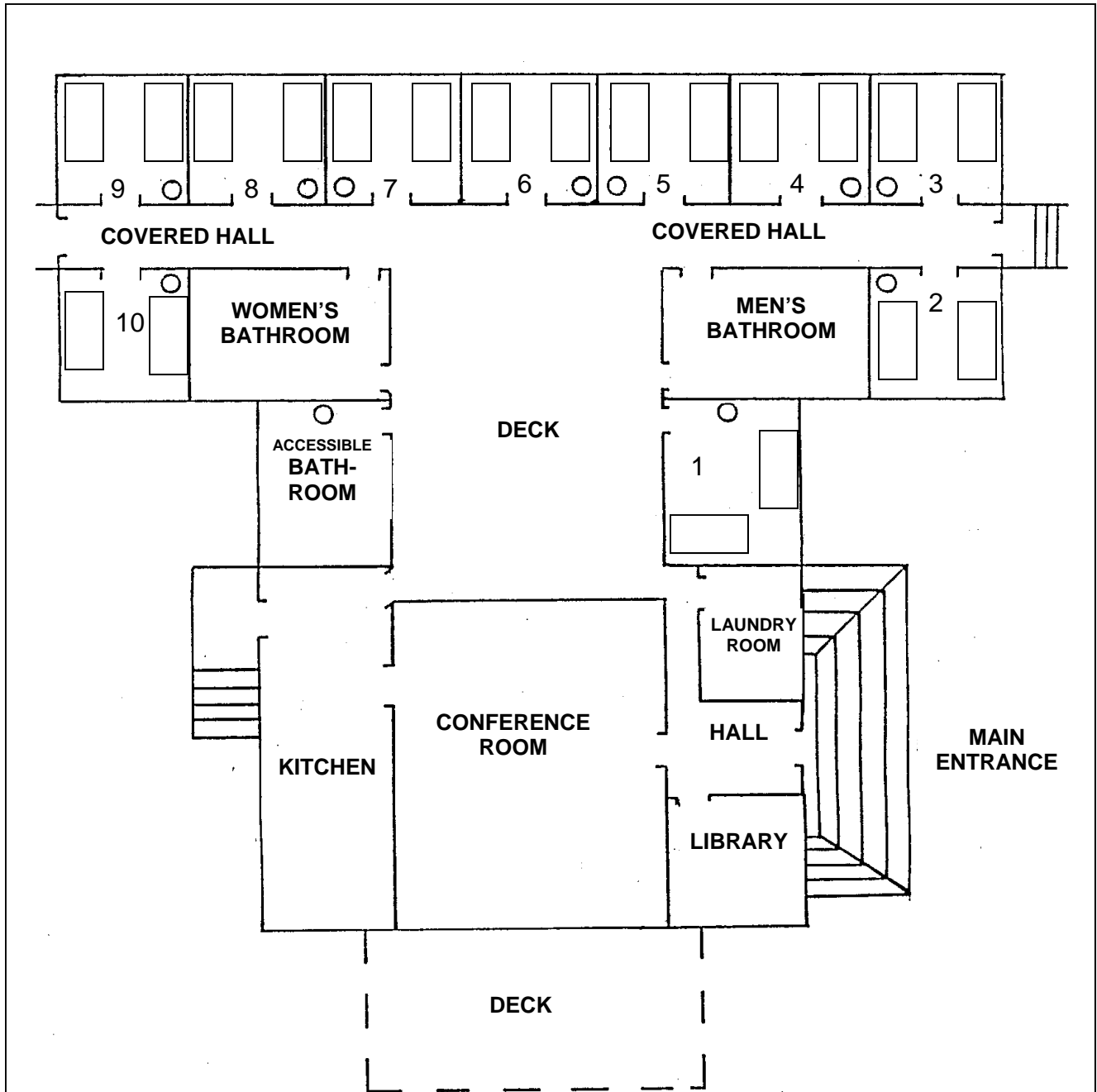
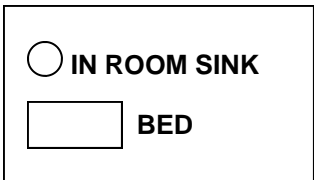


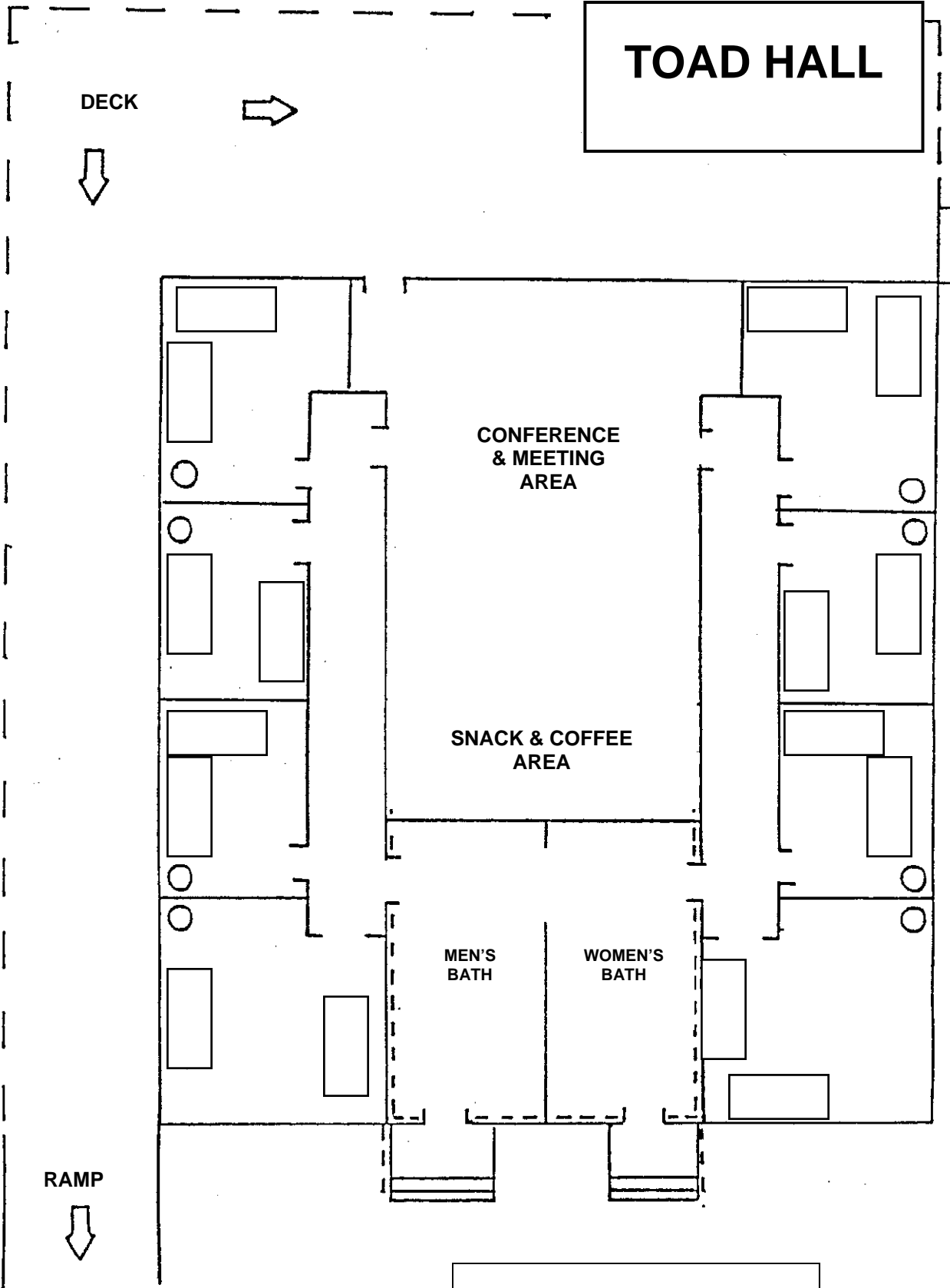
INTERNATIONAL STUDENT CENTER — I HOUSE



10 BEDROOMS
TOTAL OCCUPANCY = 20



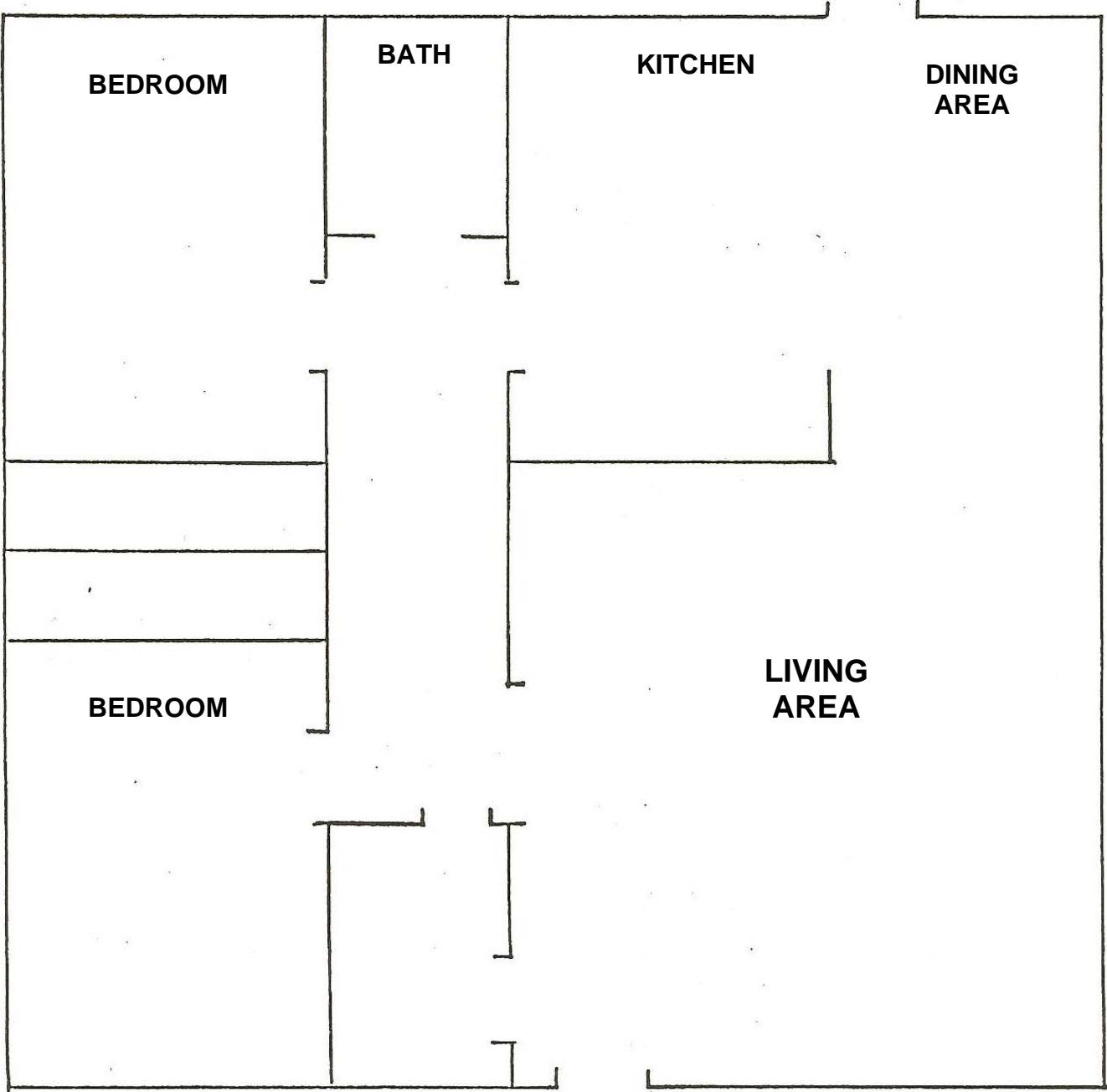
TOAD HALL



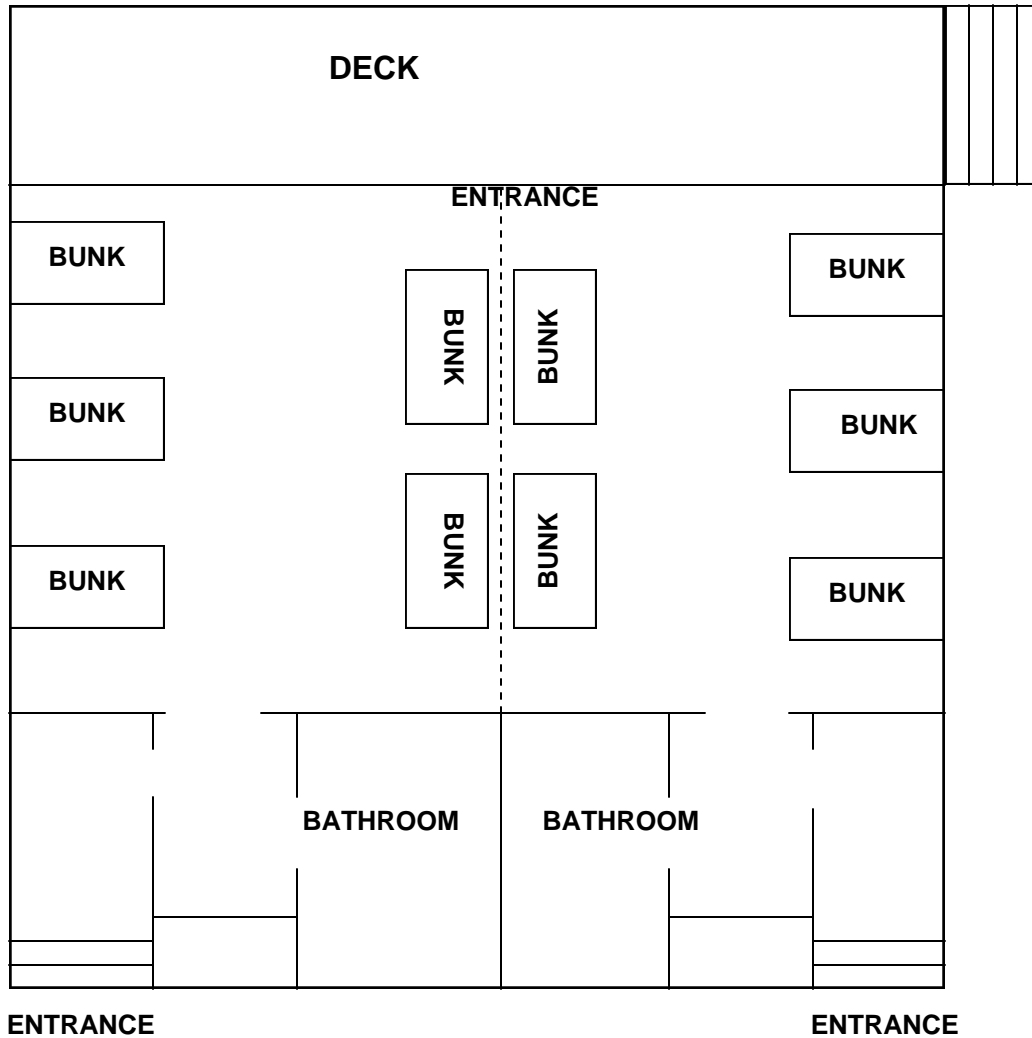
TOTAL OCCUPANCY = 32
4 GUESTS PER ROOM

- IN ROOM SINK
- ▭ BUNKBED

DIRECTOR'S FACILITY
ADJACENT TO INTERNATIONAL STUDENT CENTER/I-HOUSE



DORMITORY



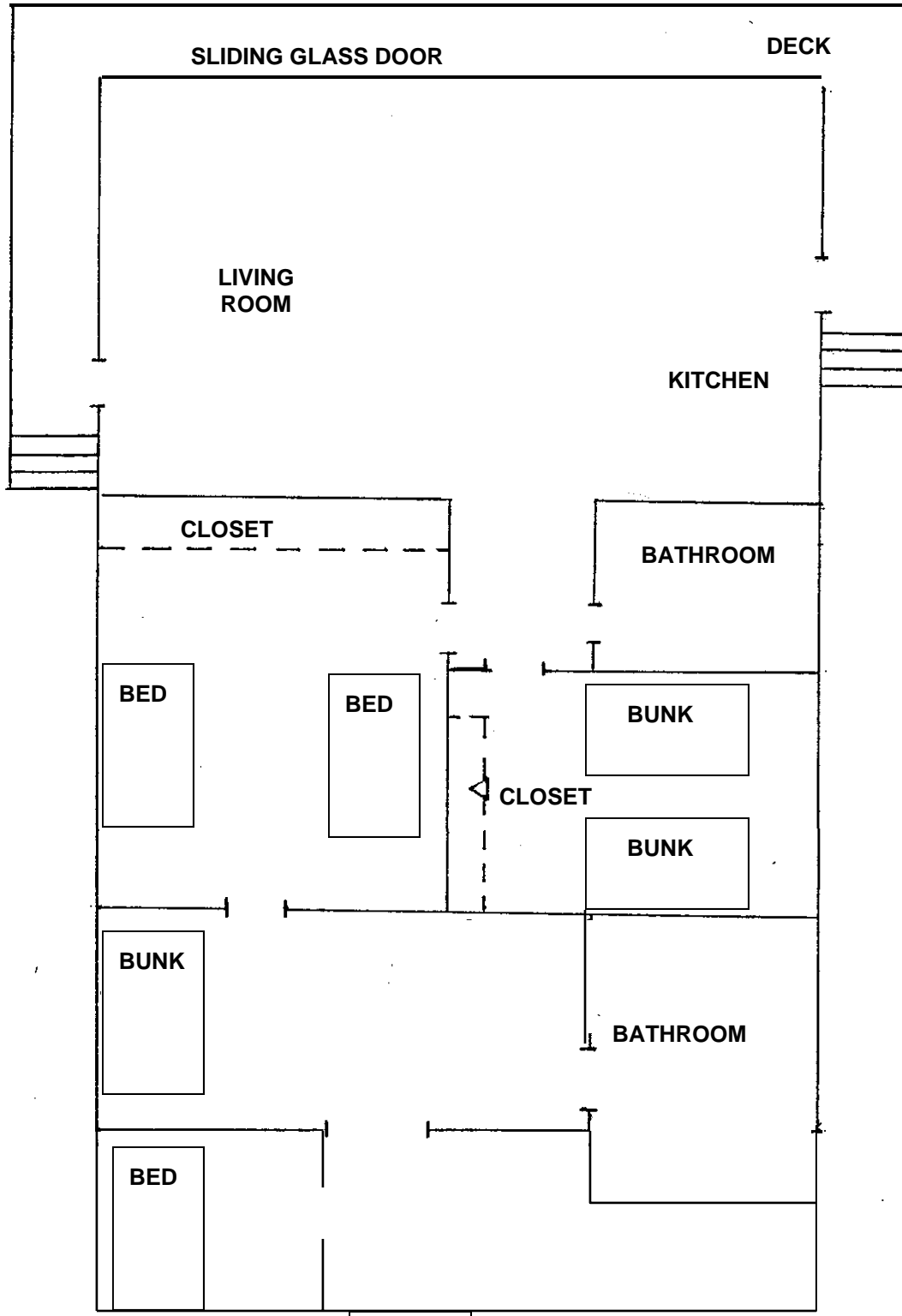
**TWO DORMITORIES: EAGLES & HAWKS
(Red-Tail Hawks has accessible ramp)**

TEN BUNKS = 20 PERSON OCCUPANCY

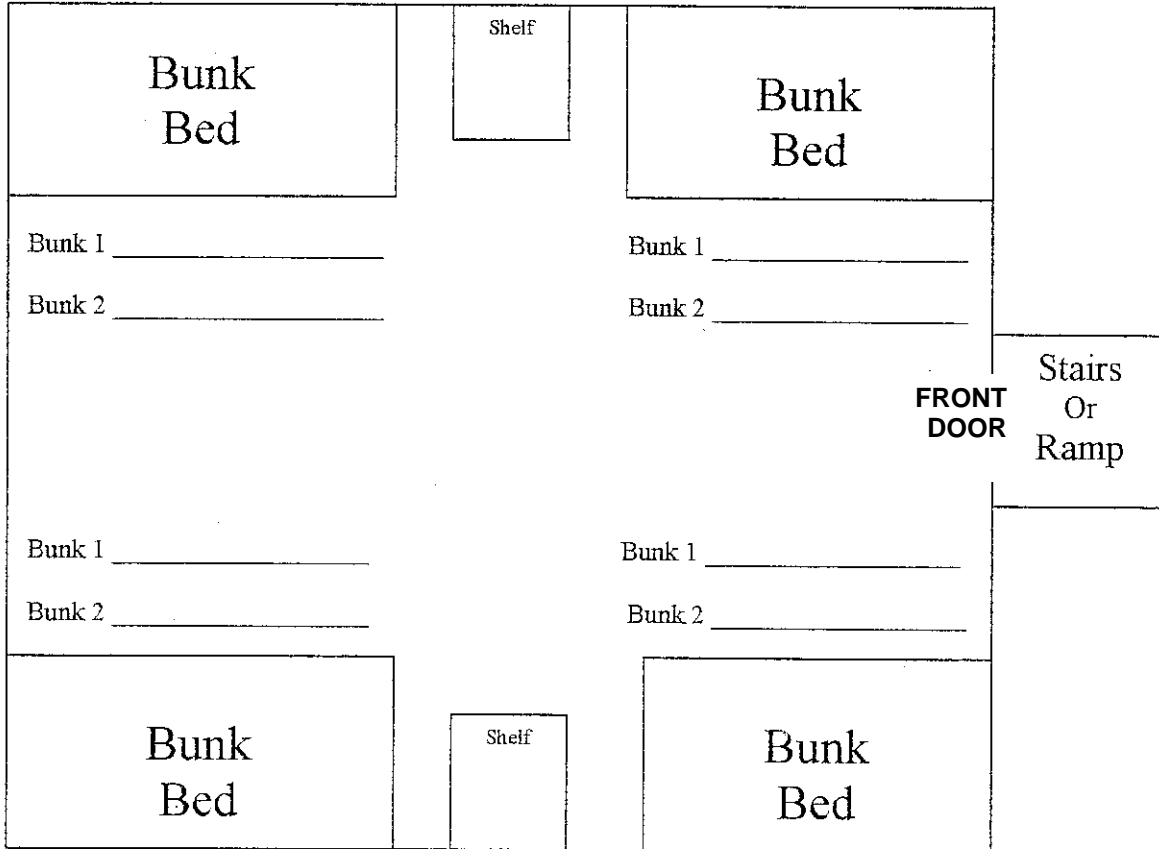
TOTAL DORMITORY STYLE ACCOMMODATION = 40

LEADERS CABIN

9 BED OCCUPANCY



Cabin # _____
Housing Assignment



8 Tent Cabins with 8-Person Occupancy per Cabin
Total Occupancy 64
Screened covered windows