

PAINTBRUSH Cabin & HORSE LODGE Cabin

Thank you for bringing your group to Highlands. We hope that your retreat will meet your highest expectations. In order for our guests to have the best possible retreat experience.

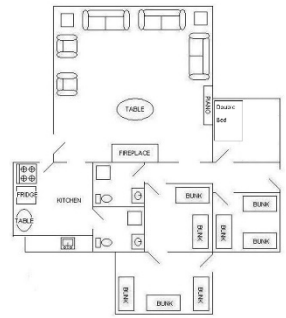
Paintbrush Cabin

Named after the Indian Paintbrush, a beautiful red flower that grows abundantly in and around the area, this rustic log cabin is a great place for groups who want to cook their own meals.

The kitchen is suited to food preparation for no more than 16 guests and is equipped with:

- A 4 burner electric range and oven
- A refrigerator/freezer (Approximately 14 cu. ft./2 shelves, 2 drawers in fridge)
- A microwave
- A coffee pot
- Propane grill and grill tools

**Cookware/Dishware for up to 16 people.



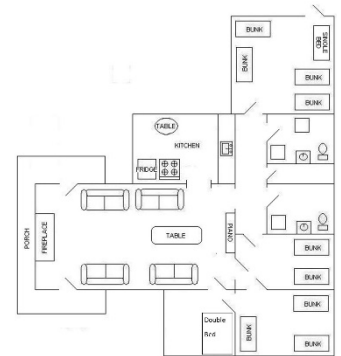
Horse Lodge Cabin

If you're a fan of the old west, you'll love our nostalgic Horse Lodge. This Bunkhouse-style log structure was built around 1910 and has become a favorite for many of our groups.

The kitchen is suited for food preparation for no more than 20 guests and is equipped with:

- A 4 burner gas range and oven
- A refrigerator/freezer (Approximately 14 cu. ft./3 shelves in fridge)
- A microwave
- A coffee pot
- Propane grill and grill tools

**Cookware/Dishware for up to 20 people.



Cook-ware

Will include items such as: assorted pots, kettles, and skillets; a 9x13 baking dish; cookie sheets; mixing bowls; colander; skillet spatulas; rubber spatulas; potato masher; potato peeler; box cheese grater; measuring cups; ladles; large spoons; serving spoons; and knives. Hot pads/mitts and dish towels are also included.

Dish-ware

Will include: knives; forks; spoons; plates; bowls; drinking glasses; and mugs. Drying racks, dishwashing soap, scrubbing pads, and sanitizer tablets will be provided for washing and sanitizing items.

You are welcome to bring your own items, and coolers with ice are always a good choice to transport and store some of your items. Please notify us of any damage to, spills on, or problems with appliances or cookware/dish-ware discovered upon arrival or during your stay. We hope you enjoy your stay!