

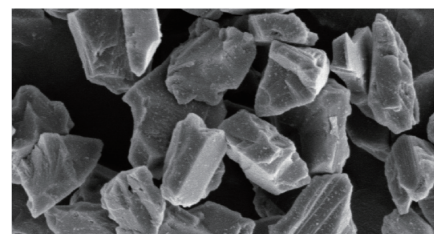


# HAPH/HSPH Diamond Slurry

HAPH: Hydroqual Advanced High-Pressure High-Temperature Polycrystalline Diamond Slurry  
HSPH: Hydroqual Standard High-Pressure High-Temperature Polycrystalline Diamond Slurry



HAPH in different size of containers



SEM



Size distribution

## INTRODUCTION:

Qual Diamond's High-Pressure High-Temperature Polycrystalline Diamond Slurry is a hydro-Pressure formulation. The slurries are made with High-Temperature High-based Polycrystalline Diamond particles dispersed in water-based liquids. The unique surface modification technology prevents the agglomeration of diamond particles. Sizes are available from 1µm to 60µm. The number of contact points, edges and fine finishing results lie between monocrystalline and detonated polycrystalline diamond slurries.

## FEATURES:

- Multi-micro cutting edges provide fast material removal rates
- Particle shape consistency ensures uniform surface finish
- Superior friability leads to easy break-down of the particles exposing new sharp cutting edges
- Tightly controlled particle size distribution and oversized particles
- Well stabilized slurry increases process stability
- Adopt 99% biodegradable materials and can substantially lower the disposal and recycling cost
- Easy to clean after lapping/polishing
- Qual Diamond's innovative formulation can sustain -20°C to 50°C environment

| Size                     | Grit Distribution |  |        | PH value |
|--------------------------|-------------------|--|--------|----------|
|                          | D10,µm            | D50,µm   | D99,µm |          |
| 0-0.2                    | 0.1               | 0.13   | 0.35   | 7.5-9.0  |
| 0-0.25                   | 0.1               | 0.16   | 0.4    | 7.5-9.0  |
| 0-0.5                    | 0.1               | 0.33   | 0.64   | 7.5-9.0  |
| 0.5-1                    | 0.45              | 0.78   | 1.65   | 7.5-9.0  |
| 1-2                      | 0.8               | 1.3  | 3.1    | 7.5-9.0  |
| 1-3                      | 0.92              | 1.23   | 3.5    | 7.5-9.0  |
| 2-3                      | 1.1               | 2.6  | 4.9    | 7.5-9.0  |
| 3-5                      | 2.2               | 3  | 5.1    | 7.5-9.0  |
| 5-7                      | 4.1               | 5.6  | 9.5    | 7.5-9.0  |
| 6-12                     | 4.8               | 8.9  | 13.7   | 7.5-9.0  |
| 7-10                     | 6.3               | 8.5  | 14     | 7.5-9.0  |
| 10-20                    | 11.5              | 14.6   | 22.7   | 7.5-9.0  |
| 20-30                    | 18.9              | 24.6   | 39.4   | 7.5-9.0  |
| 30-40                    | 26.3              | 33.4   | 50.9   | 7.5-9.0  |
| 40-50                    | 31.6              | 40   | 60.4   | 7.5-9.0  |
| Available Concentration: |                   | 1g/l, 2g/l, 5g/l, 10g/l, 25g/l, 50g/l                            |        |          |
| Available Viscosity:     |                   | A 100-150cpm,<br>B 200-300cpm,<br>C 500-800cpm,<br>D over1000cpm |        |          |
| Available Package:       |                   | 250ml 500m 1L 1G   |        |          |