



JAMES T. A. OSBORNE

1907-1979

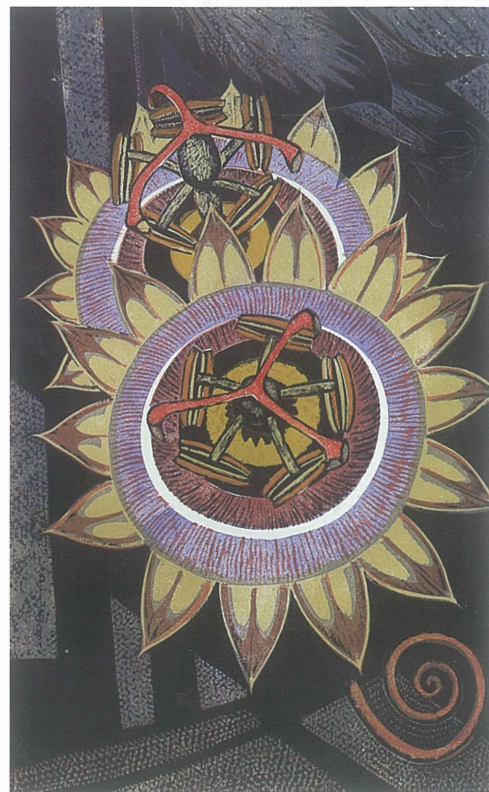
1. *Front Cover:*
**RED & BLACK
 THROATED DIVERS**
 Linocut, Edition of 30
 18" x 28"
 2 copies available,
 both Signed
 Exhibited 1968 at the R.E.
 Catalogue No. 131
 £475

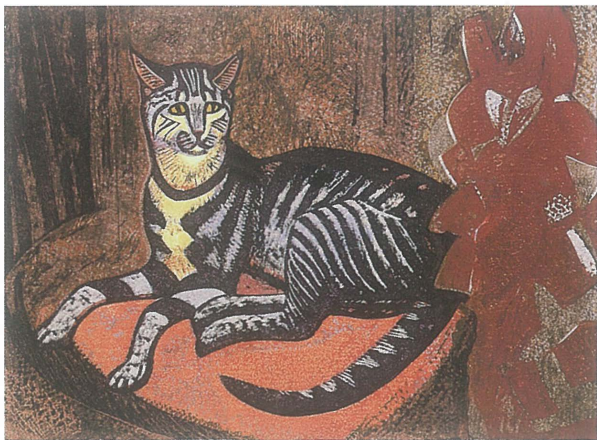
2. **TIGER LILY**
Lilium tigenum splendens
 Linocut, Edition of 30
 24" x 12"
 1 copy available,
 Signed
 Exhibited 1969 at the R.E.
 Catalogue No. 165
 £400

3. **PASSION FLOWERS**
 Linocut, Edition of 30
 21" x 13"
 3 copies available,
 all Signed
 Exhibited 1970 at the R.E.
 Catalogue No. 146
 £325

4. **A TABBY KITTEN**
 Linocut, Edition of 30
 11" x 15"
 1 Signed copy available,
 Exhibited 1970 at the R.E.
 Catalogue No. 74
 £250

5. **SNOWY OWLS**
 Wood Engraving & Linocut
 Edition of 30
 20" x 11.5"
 8 copies available, 5 Signed
 3 Studio stamped
 Exhibited 1963 at the R.E.
 Catalogue No. 155
 £325





4



5

JAMES T. A. OSBORNE

R.E. 1907-1979

APRIL 26 - MAY 25

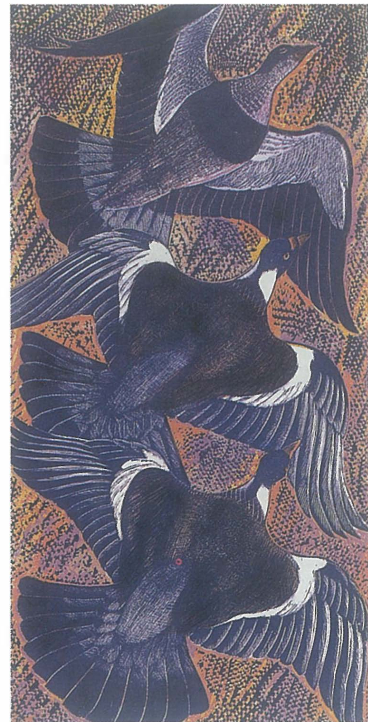
AN EXHIBITION OF
WOOD ENGRAVINGS AND LINOCUTS

6. **TAWNYOWL
IN WINTER**

Linocut
Edition of 30
20" X 11.5"
Dated 1974
7 copies available, 5 Signed
2 Studio stamped
£325

7. **RINGED DOVES
AUTUMN FLIGHT**

Wood Engraving & Linocut
Edition of 30
20" X 10"
1 Signed copy available
Exhibited at the R.E. 1962
Catalogue No. 7
£325





8



9



8a



8. **HARE & FIELDFARES**

Linocut
Edition of 30
11" x 15"
1 Signed copy available
Exhibited at the R.E. 1967
Catalogue No. 10
Together with a
Watercolour study (Sa)
£650

9. **LITTLE OWLS
TWILIGHT**

Linocut, Edition of 30
10" X 10"
1 Signed copy available
£200

10. **THE CHARMING
GOLDFINCH**

Linocut, Edition of 30
21" X 13"
1 Signed copy available
Slight damage to
left hand margin
Exhibited at the R.E. 1969
Cata.Jogue No. 140
Together with original sketch
in Coloured Crayon
£650

11. **SUNFLOWERS I**

Wood Engraving & Linocut
20" X 11.5"
5 copies available
all Studio stamped
Exhibited at the R.E. 1959
Catalogue No. 993
£300

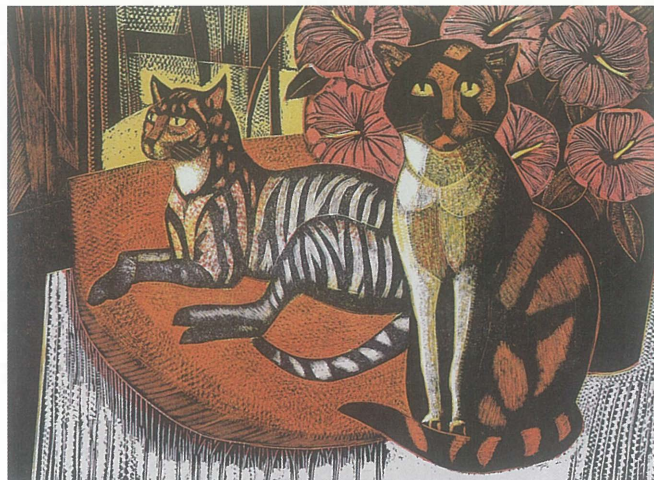


12. **COMPANIONS**

Linocut & Wood Engraving
1 1/2" X 15"
5 copies available, 1 Signed
4 Studio stamped
Exhibited at the R.E. 1978
Catalogue No. 126
£275

13. **AUTUMN GOLD
SUNFLOWERS
& QUINCES**

Linocut, Edition of 30
20" X 11"
1 Signed copy available
Exhibited at the R.E. 1966
Catalogue No. 1128
£350





14

14. **ORNAMENTAL GOURDS**

Linocut, Edition of 30
11" x 15"
4 copies available, all Signed
Exhibited at the R.E. 1970
Catalogue No. 196
£250

15. **INDIAN CORN**

Linocut, Edition of 10
20" x 17"
2 copies available, 1 Signed
1 Studio stamped
Exhibited at the R.E. 1970
Catalogue No. 843
£300



15



16

16. **LADY'S SLIPPER ORCHID**

Linocut, Edition of 30
24" x 12"
5 copies available, all Signed
Exhibited at the R.A. 1969
Catalogue No. 645
Exhibited at the R.E. 1969
Catalogue No. 161
£325

17. **CRESTED PORCUPINES**

Linocut, Edition of 30
25" x 20"
2 copies available
both Signed
Exhibited at the R.E. 1962
Catalogue No. 69
£400



17

18. **SCARLET TIGERMOTHS AT SUNSET**

Linocut & Wood Engraving
11" x 15"
3 copies available
1 Signed, 2 Studio stamped
£275

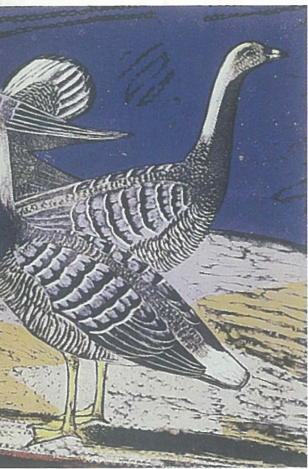


18

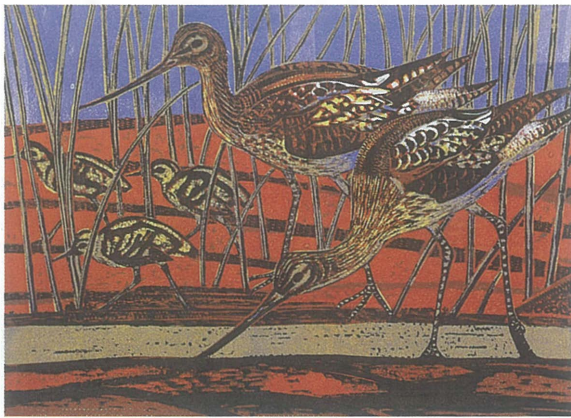
19. **FALKLAND, UPLAND
AND EMPEROR GEESE**

Linocut
Edition of 30
14" x 28"
1 copy available
Studio stamped
Exhibited at the R.A. 1964
Catalogue No. 865
£450





19



21



20

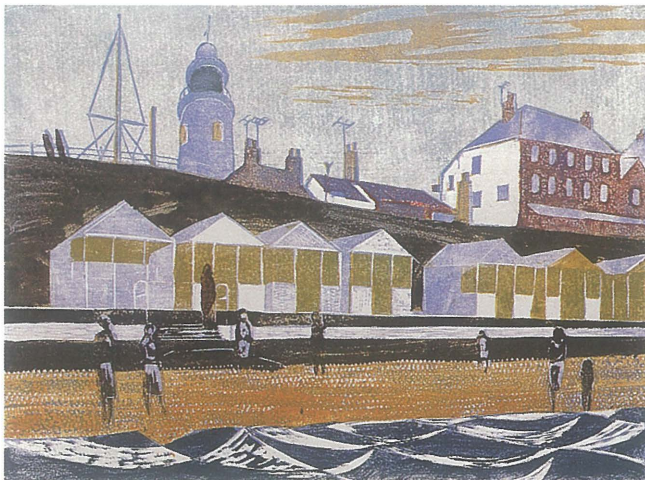


22

20. **GAY LILLIES**
Linocut, Dated 1972
Edition of 30
20" X 17"
1 copy available, Signed
£350
21. **A FAMILY OF GREENSHANK**
Linocut
Edition of 30
11" x 15"
1 copy available
Studio stamped
Exhibited at the R.E. 1974
Catalogue No. 1 B
£375.
22. **SPOTTED DEER OF CEYLON**
Linocut, Edition of 30
22¹ X 34"
4 copies available, all Signed
Exhibited at the R.E. 1962
Catalogue No. 126
£475

23. **THE LIGHTHOUSE,
SOUTHWOLD**

Linocut, Edition of 30
11" X 15"
5 copies available, all Signed
Exhibited at the R.E. 1974
Catalogue No. 109
£175



23

24. **THE ALDEBURGH
LIFEBOAT**

Linocut, Edition of 30
13" X 21"
3 copies available, 2 Signed
1 Studio stamped
Exhibited at the R.E. 1974
Catalogue No. 20
£225



24

25. **THE RARE BITTERN
OF THE FENS**

Linocut, Edition of 30
28" X 18"
1 Signed copy available
Exhibited at the R.A. 1962
Catalogue No. 816
£475





26



27

26. **CHEETAH ON
THE ALERT**

Linocut, Edition of 30

36" X 14"

1 Signed copy laid
on to board available
Exhibited at the R.A. 1965
Catalogue No. 1041
£550

27. **WINTER BITTERN**

Linocut, Edition of 10

14" X 15"

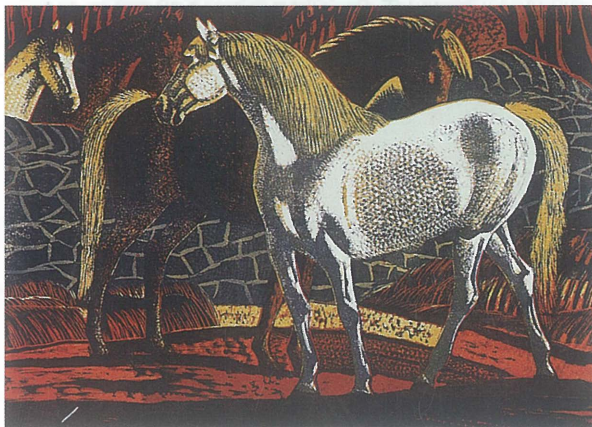
1 Signed copy available
£375

28. **HORSES AUTUMN**

Linocut, Edition of 30

11" X 15"

10 copies available, 2 Signed
8 Studio stamped
£250



28

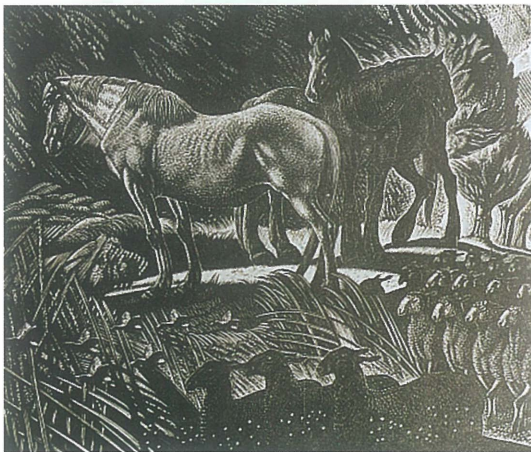


29. **PLOVERS AND
FIELDFARES**

Wood Engraving
Edition of 30
4" x 5"

I copy available, Signed
Exhibited at the R.E. 1951
Catalogue No. 267
£125

29

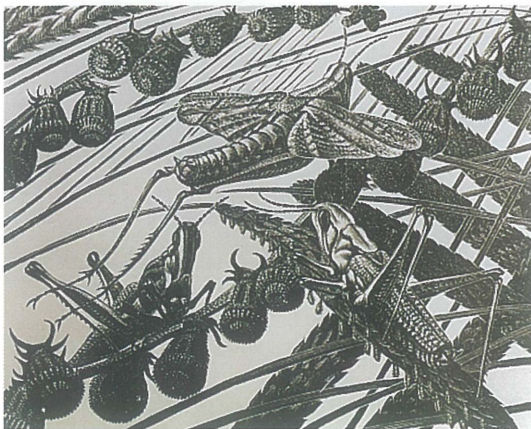


30. **SUNDAY MORNING**

Wood Engraving
5" x 6"

I copy available
Studio stamped
Exhibited at the R.A. 1948
Catalogue No. 1125
Exhibited at the R.E. 1949
Catalogue No. 80
£125

30

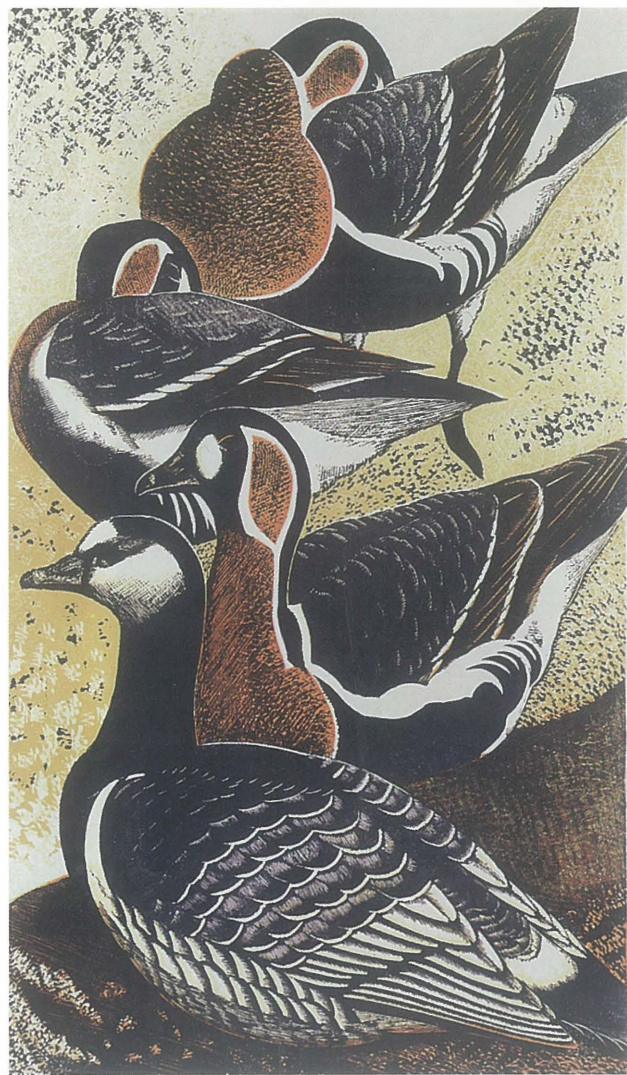


32. **RED BREASTED
AND BARNACLE
GEESE**

Linocut
20" x 11.5"

16 copies available, 4 Signed
12 Studio stamped
£325

31





33

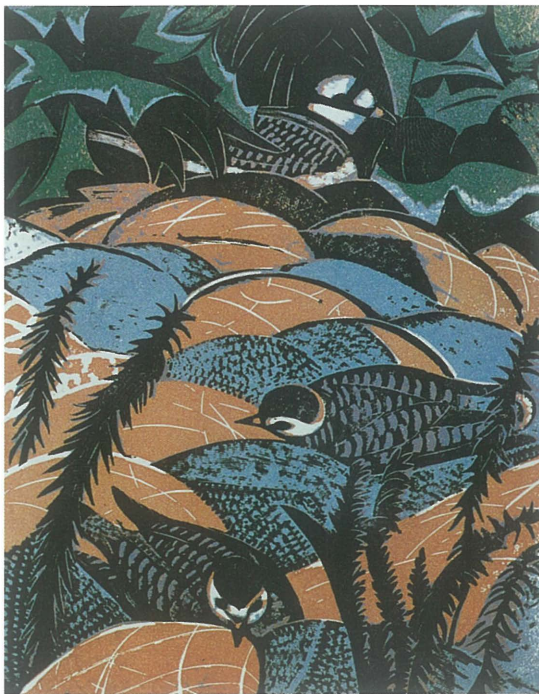


34

- 33 **PUFFINS**
 Linocut & Wood Engraving
 Edition of 20
 20" x 11.5
 9 copies available, 4 Signed
 5 Studio stamped
 Exhibited at the O.B.S.A. 1960
 Catalogue No. e
 Exhibited at R.E. 1961
 Catalogue No. 181
 £350
- 34 **FAMILY OF OKAPE**
 Linocut
 Edition of 30
 20" x 9
 1 copy available
 £225

35. **LITTLE RINGED PLOVER & FLEDGLINGS**

Linocut, Edition of 30
10" x 8"
1 copy available, Signed
£250



36. **CURLEWS ON THE ROCKS**

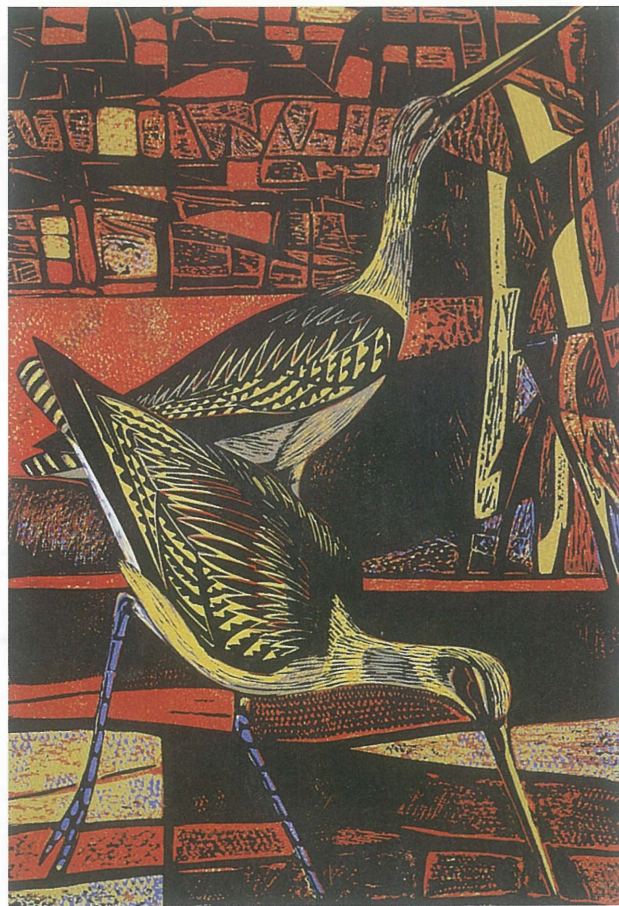
Linocut, Edition of 30
21" x 13"
1 copy available, Signed
Exhibited at the R.E. 1968
Catalogue No. 103
£350

37. **BAR TAILED GODWITS**

Linocut & Wood Engraving
Edition of 30
11" x 15"
16 copies available, 9 Signed
7 Studio stamped
Exhibited at the R.A. 1958
Catalogue No. 996
Exhibited at the R.E. 1959
Catalogue No. 179
£250

38. **THORNAPPLE**

Linocut, Edition of 30
24" x 12"
5 copies available, 2 Signed
3 Studio stamped
Exhibited at the R.E. 1967
Catalogue No. 811
£325





JAMES T. A. OSBORNE

R.E. 1907-1979

James was born in Sussex in January 1907, the son of a scotch farmer who had moved south. From Hastings School of Art he won a scholarship to the Sculpture School of the Royal College of Art, but in the last term of his last year there, he switched to the Print School, then under the direction of Malcolm Osborne, and worked so well in his new metier that he won the Prix de Rome in Engraving, and while in Italy met a fellow Rome scholar in sculpture, his wife to be, Charlotte.

He returned to England in 1932 and took up a teaching post at the Polytechnic School of Art in Regent Street. He made little or no attempt to sell his work or advance himself professionally. When approached to sell one of his woodcuts or engravings, he would insist they were not good enough. Consequently, apart from his students, fellow members of the R.E. and friends, his work is not well known, but amongst his peers is thought to be without equal.

He experimented with all forms of print and paper. Each print was different from the next, and he printed only as and when required. What sets Osborne's work apart is the variation from print to print and the large scale of wood engraving blocks he worked on. Each can be considered as individual and original.

All of the pictures are for sale from the catalogue but will be held until the end of the exhibition.

Prices are for unframed prints and where there is more than one copy, the price may vary with the condition or state of the print.

Prints are either signed or studio stamped. The stamp was embossed into the print after his death having been made by his wife Charlotte in the form of a bust of her husband.



THE WILDLIFE ART GALLERY

97 HIGH STREET · LAVENHAM · SUFFOLK · CO10 9PZ
TEL: (01787) 248562 · FAX: (01787) 247356

GALLERY OPENING HOURS
Monday-Saturday 10.00 a.m.-5.00 p.m. · Sunday 2.00 p.m.-5.00 p.m.