

THE ROYAL SOCIETY OF  
PAINTER-ETCHERS  
AND ENGRAVERS



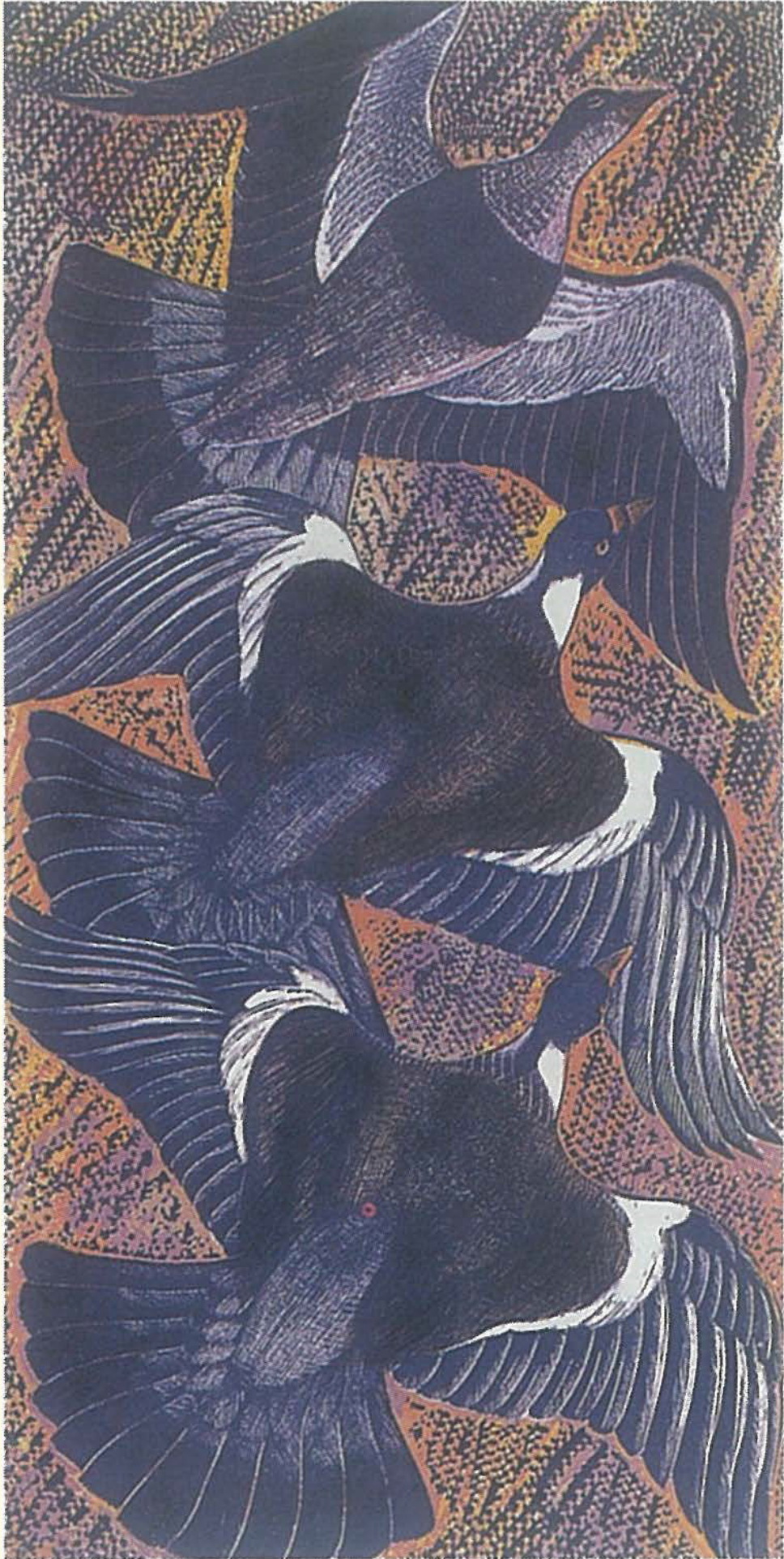
1962

THE ROYAL SOCIETY OF  
PAINTER-ETCHERS  
AND ENGRAVERS

Eightieth  
Annual  
Exhibition  
1962

*HELD AT THE R.W.S. GALLERIES  
26 CONDUIT STREET, LONDON W.1*

*from Monday 26th February 1962  
until Thursday 22nd March 1962*



Ringdoves - Autumn Flight



Crested Porcupines



Spotted Deer of Ceylon

# CATALOGUE

The initials in parentheses immediately following the title indicate the methods used as follows:

(A) Aquatint; (AE) Aquatint and Etching; (D) Drypoint; (E) Etching;  
 (ED) Etching and Drypoint; (L) Line Engraving; (M) Mezzotint;  
 (SGE) Soft ground Etching; (W) Woodcut;  
 (WE) Wood Engraving; (LC) Lino Cut (ER) Relief Etching

The Prices do not include frames.  
 For framed prices enquire at desk.

1	The Foreshore at Wrabness (D) Cyril Deakins	5. 5. 0
2	Dolls, Study No. 4 (Col.LC) Jennifer N. Black	5. 5. 0
3	Woman and Child (E) Pat Barakan	7. 7. 0
4	"A Break" (E) Albert Phillip	2. 2. 0
5	Gethsemane (Col.W) John Petts	4. 4. 0
6	Landscape (LC) Peter Green	10. 0. 0
7	"Ringdoves—Autumn Flight" (Col.WE&LC) James T. A. Osborne	6. 6. 0
8	Winter Wood (E) A. Henderson Hall	4. 4. 0
9	St. Brelades, Jersey (AE) Newton Taylor	5. 5. 0
10	Skyscraper (E) T. W. Ward	7. 7. 0
11	Spanish Dancer (Woman) (A) Dame Laura Knight	10.10. 0
12	Pebbles and Water (WE) Geoffrey Wales	3. 3. 0
13	Trees (E) James Townley	5. 5. 0
14	Construction (A) Thomas Walsh	3. 3. 0
15	Landscape (W) Frank Martin	6. 6. 0
16	The Bird Cage (AE) Charles Bartlett	5. 5. 0
17	Tree Trunks (E) Norman Webster	5. 5. 0
18	English Hill Town (LC) Nora S. Unwin	6. 6. 0
19	Bank Holiday (A) Dame Laura Knight	10.10. 0
20	Landscape (WE) Roger Hart	4. 4. 0
21	Sluiceway (Rel.Eng.) James Bostock	6. 6. 0
22	Leighton Avenue, Pinner (AE) Margaret A. Payne	5. 5. 0
23	Sunrise, Pinmill (W) Zelma Blakely	3. 3. 0
24	St. Govan's Cliffs, Pembrokeshire (Col.W) John Petts	4. 4. 0

57	The Straw Hat (E) <i>H. Andrew Freeth</i>	5. 5. 0
58	Dawn over Yeolis (WE) <i>Alec Buckels</i>	4. 4. 0
59	Yr Elen, Caernarvonshire (WE) <i>John Petts</i>	2. 2. 0
60	At the Window (from <i>Persuasion</i> — Folio Society) (WE) <i>Joan Hassall</i>	3. 3. 0
61	The Convent Greenhouse (E) <i>Denise L. Brown</i>	3. 3. 0
62	Cottage Window (WE) <i>Geoffrey Wales</i>	3. 3. 0
63	Sand Pit, Essex (Col.LC) <i>Frederick Austin</i>	5. 5. 0
64	Mario's Venice (SGE) <i>W. Fairclough</i>	10.10. 0
65	Rocks: Ross and Cromarty, I (AE) <i>Sally McLaren</i>	8. 8. 0
66	Woman and Flowers (AE) <i>Margaret A. Payne</i>	5. 5. 0
67	Night Landscape (E) <i>Peter Green</i>	6. 0. 0
68	Fountains Abbey No. 2, Summer (LC) <i>Euan Jennings</i>	8. 8. 0
69	Crested Porcupines (Col.LC) <i>James T. A. Osborne</i>	8. 8. 0
70	Sunflowers (E) <i>K. R. Armour</i>	6. 6. 0
71	Cobb's Farm (Col.LC) <i>Frederick Austin</i>	5. 5. 0
72	East End—Sultry (LC) <i>Geoffrey Clack</i>	9. 9. 0
73	Juanita (first state) (D) <i>Dame Laura Knight</i>	16.16. 0
74	Babes in the Wood (Col.LC) <i>Ruth Collet</i>	4. 0. 0
75	Leaves in Wood (SGA&E) <i>Paul Drury</i>	4. 4. 0
76	Canal Decorations (WE) <i>George Mackley</i>	N.F.S.
77	The First Temptation (AE) <i>Diana R. W. Braithwaite</i>	3. 3. 0
78	Arabesque (E) <i>H. Andrew Freeth</i>	5. 5. 0
79	Bird Stones (LC) <i>Barbara Greg</i>	4. 4. 0
80	Welsh Farm (WE) <i>George Mackley</i>	3. 3. 0
81	Patient the Ass (WE) <i>Marcia Lane Foster</i>	3. 3. 0
82	Trade Union Leader (WE) <i>Garrick Palmer</i>	3. 3. 0
83	In Newells (A) <i>G. Sparrow</i>	5. 5. 0
84	Natters, above Innsbruck (E) <i>Gwen May</i>	5. 5. 0
85	Elms (AE) <i>Julia F. Hammond</i>	5. 5. 0
86	Well Over (A) <i>G. Sparrow</i>	5. 5. 0

Bar Tailed Godwits

87	Shepherd and Son, West Africa (WE)	<i>G. W. Lennox Paterson</i>	5. 5. 0
88	Rods and Bods (WE)	<i>Marcia Lane Foster</i>	3. 3. 0
89	Militant Plants (WE)	<i>George Tute</i>	4. 4. 0
90	The Silk Mill, Whitchurch (WE)	<i>Eric Ramsden</i>	4. 4. 0
91	King Pippin (E)	<i>Anna Airy</i>	3. 3. 0
92	Festa (L)	<i>Leslie Jones</i>	3. 3. 0
93	Pont Neuf (A)	<i>W. A. H. Henderson</i>	7. 7. 0
94	Landscape (WE)	<i>Garrick Palmer</i>	4. 4. 0
95	The Greenhouse (WE)	<i>T. D. Plenderleith</i>	2. 2. 0
96	A Gamoussa (E)	<i>Martyn Lack</i>	4. 4. 0
97	Winter Landscape (WE)	<i>George Tute</i>	4. 4. 0
98	Flint and Fossil Forms (WE)	<i>Monica Poole</i>	3. 3. 0
99	Thockrington Church, Northumberland (WE)	<i>Clifford Webb</i>	3. 3. 0
100	Girl in an Armchair (D)	<i>Frank Martin</i>	3. 3. 0
101	Form and Landscape (LC)	<i>Peter Green</i>	8. 0. 0
102	Winter at Clatford Bottom (WE)	<i>Kenneth A. Lindley</i>	3. 3. 0
103	Landscape with Moon (LC)	<i>Norman Webster</i>	8. 8. 0
104	Wilton under Snow (WE)	<i>Kenneth A. Lindley</i>	3. 3. 0
105	The Capsize (WE)	<i>James Dolby</i>	4. 4. 0
106	Nude Back (D)	<i>Frank Martin</i>	3. 3. 0
107	Head III (EA)	<i>John Roberts</i>	3. 3. 0
108	Summer Pastures (D)	<i>Greta Delleany</i>	3.13. 6
109	Rodez Cathedral, France (Col.AE)	<i>James T. A. Osborne</i>	6. 6. 0
110	Otters (W&LC)	<i>Clifford Webb</i>	7. 7. 0
111	Port Eynon (D)	<i>Cyril Deakins</i>	4. 4. 0
112	Milking Time (D)	<i>Greta Delleany</i>	3. 3. 0
113	Hey! Diddle, Diddle (WE)	<i>Gwenda Morgan</i>	2. 2. 0
114	Regent's Canal (WE)	<i>Norman Janes</i>	2. 2. 0
115	Rathaus, Nördlingen (E)	<i>Gwen May</i>	5. 5. 0
116	Catalan Façade (AE)	<i>Norman Janes</i>	4. 4. 0
117	Roman Steps, Ardudwy (WE)	<i>John Petts</i>	2. 2. 0
118	Bookplate (WE)	<i>Zelma Blakely</i>	N.F.S.



119	Bakehouse Close, Edinburgh (E)		
		<i>Murray M. Tod</i>	4. 4. 0
120	In Dock (WE)	<i>George Mackley</i>	4. 4. 0
121	The Blue Pool (SGE)	<i>W. Fairclough</i>	10.10. 0
-122	Embryo (Col.E)	<i>C. Custerson</i>	8. 8. 0
123	Ross and Cromarty II (EA&L)		
		<i>Sally McLaren</i>	8. 8. 0
↗124	Brighton Beach (D)	<i>E. Owen Jennings</i>	4. 4. 0
125	Gunnarside (E)	<i>Peter Matthews</i>	6. 6. 0
-126	Spotted Deer of Ceylon (Col.LC)		
		<i>James T. A. Osborne</i>	10.10. 0
↗127	Leaves (E)	<i>Barbara M. Newcomb</i>	7. 7. 0
128	Settle Folly (D)	<i>E. Owen Jennings</i>	4. 4. 0
129	Dance Movement No. 3 (L&Col.)		
		<i>Dolf Rieser</i>	6. 6. 0
130	Composition (E)	<i>Richard Croft</i>	7. 7. 0
↗131	Country Calendar (WE)	<i>Gwenda Morgan</i>	2. 2. 0
132	Corner of Auchencairn (E)	<i>Murray M. Tod</i>	3. 3. 0
133	Pale Primroses (E)	<i>Anna Airy</i>	4. 4. 0
↗134	Squirrel (WE)	<i>F. J. Winter</i>	2. 2. 0
135	Towards Winthrop (from Persuasion, Folio Society) (WE)	<i>Joan Hassall</i>	3. 3. 0
136	The Bowlers (E)	<i>R. Spence</i>	3. 0. 0
137	Surrey Landscape with Church (AE)		
		<i>Arthur Hackney</i>	6. 6. 0
138	Susanna (Frontispiece for The Caseg Press) (WE)	<i>John Petts</i>	2. 2. 0
139	Houri (WE)	<i>Anthony Brown</i>	2. 2. 0
140	Accident on the Cobb (from Persuasion, Folio Society) (WE)	<i>Joan Hassall</i>	3. 3. 0
-141	Winter—King's Lynn (AE)	<i>Marion Rhodes</i>	4. 4. 0
142	"Boule" at Arles, Sunday Morning (E)		
		<i>Martyn Lack</i>	5. 5. 0
143	Slag 2 (AE)	<i>H. N. Eccleston</i>	4. 4. 0
144	Winston S. Churchill, after Sir Oswald Birley (M)	<i>Lawrence Josset</i>	N.F.S.
145	Disintegration (E)	<i>Anna Airy</i>	4. 4. 0

- Malenoir, Miss Mary (A.), 24 Queen's Drive, Thames Diton. 172, 176.
- Maris, R. W. (A.), 24 Town End, Golcar, Nr. Huddersfield.
- Martin, Frank V., 8 Bramerton Street, S.W.3. 15, 100, 106.
- Mason, G. H. (A.), c/o College of Art, Margaret Street, Birmingham, 3.
- May, Miss Gwen (A.), 21 Donovan Avenue, Muswell Hill, N.10. 84, 115, 331.
- McLaren, Miss Sally (A.), 101b Alexandra Road, N.W.8. 65, 123, 209, 224.
- Middlehurst, Fred (A.), Garrett's Farm, Wimbish Green, Nr. Saffron Walden, Essex.
- Mills, A. S. H., "Stonerdale," Steep, Petersfield, Hants.
- Morgan, Miss Gwenda, Old Bank House, Petworth, Sussex. 113, 131, 177.
- Newcomb, Miss Barbara (A.), 101b Alexandra Road, N.W.8. 127, 180, 297.
- Oliver, Kenneth H. (A.), 69 Shaw Green Lane, Prestbury, Cheltenham.
- Osborne, James T. A., 6 Avenue Court, Mount Avenue, Ealing, W.5. 7, 69, 109, 126.
- Osborne, Malcolm, C.B.E., R.A. (President), 44 Redcliffe Gardens, South Kensington, S.W.10. 35, 39, 40
- Parker, Miss Agnes Miller, 31 Riddrie Knowes, Glasgow, E.3.
- Paterson, G. W. Lennox (A.), Ferntower, 1 Dundonald Road, Glasgow, W.2. 87.
- Payne, Miss Margaret A. (A.), 3 Old Hall Close, Pinner, Middlesex. 22, 36, 46, 66.
- Perrin Brian A. (A.), 29 Coleherne Road, S.W.10.
- Peter, R. C. (A.), 4 Broomfield Road, Kew Gardens, Surrey. 149.
- Petts, John (A.), Cambria House, Llanstephan, Carmarthenshire. 5, 24, 55, 59, 117, 138.
- Philip, Albert (A.), 5 West Street, Greaves, Lancaster. 4, 337.
- Platt, John G. (A.), 57 Cholmeley Crescent, Highgate, N.6.
- Plenderleith, T. D. 46 Sylvia Avenue, Hatch End, Middlesex. 95.
- Pope, A. L. (A.), 9 Laurel Avenue, Englefield Green, Surrey.
- Popham, A. E., C.B. (*Hon Fellow*), British Museum, W.C.1.
- Prince, Miss Alison (A.), 317b Upper Richmond Road, Putney, S.W.15.
- Ramsden, Eric (A.), The Priory, Freefolk, Whitchurch, Hants. 90, 214.
- Reeve, Russell, 24 St. Ann's Terrace, St. John's Wood, N.W.8.
- Reeves, P. T. Langford (A.), c/o School of Art, 167 Renfrew Street, Glasgow, C.3. 48, 187.
- Reynolds, Michael (A.), 22 Vancouver Road, Forest Hill, S.E.23.
- Rhodes, Miss Marion, 2 Goodwyn Avenue, Mill Hill, N.W.7. 141, 164, 165, 215, 309.