

# THE LYNHALL AFTERNOON TEA

Served Friday through Sunday at 3pm

## PASTRY

Floral Citrus Scone

edible Wild flower, fresh citrus zest

Cream Scone

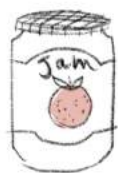
lightly sweetened scones



## Accompaniments

Clotted Cream

strawberry orange blossom jam



## SAVORY

Coronation Chicken

apricot, basil, mini croissant

Shaved Cucumber

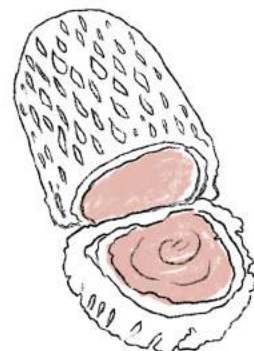
mint Cream cheese, pea shoots, paint au lait bun

Smoked Salmon Lox

Sweet Pea, Creme Fraiche, Sorrel, Brioche

Egg Salad

savory tartlet, dill, smoked paprika



## DESSERT

Very Berry Trifle

sponge cake, vanilla custard, fresh berries

Rhubarb Crumble Bars

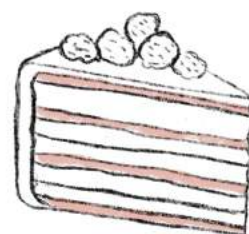
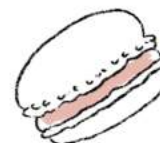
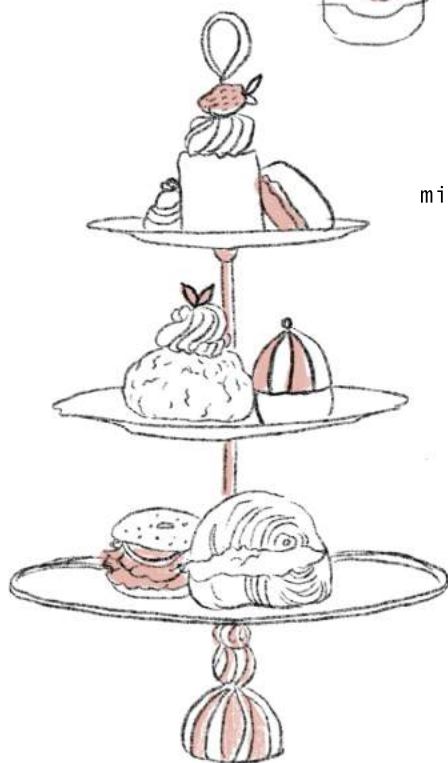
almond, thyme, lemon

Key Lime Tarts

whipped cream, candied coconut

Cream Puff

blood orange pastry cream, mint craquelin



## KIDS MENU

### PASTRY

Floral Citrus Scone

edible wild flowers, fresh citrus zest

### SAVORY

Ham & Cheese Sammy

Biscoff & Jam Sammy

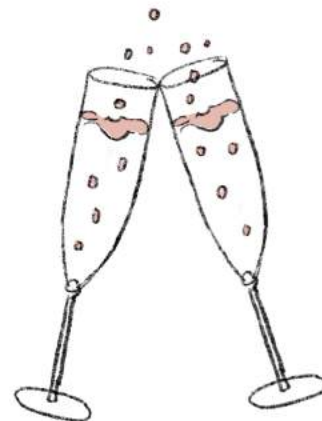
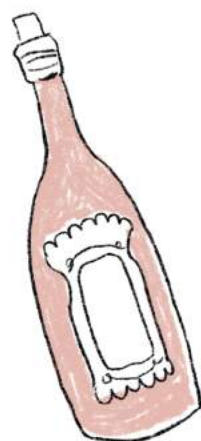
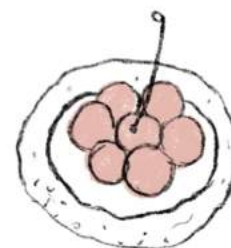
### DESSERT

Very Berry Trifle

sponge cake, vanilla custard, fresh berries

Rhubarb Crumble Bars

frangipane, thyme, lemon



## BUBBLES, ROSE & N/A SPARKLING

Graham Beck, Pinot Noir Chardonnay 14/50

south africa

Emendis, Rosé Cava 10/38

spain

Loimer, Gruner Veltliner 50

spain

Cantina di Carpi, Via Emilia Brut 10/38

italy

TOST Ginger & Cranberry 10/35

TOST Elderberry & Ginger 10/35

A 20% gratuity is applied to all parties of 8 or more, split checks are not available. Holiday Afternoon Tea is \$65 per adult, \$40 for children 10 and under. Substitutions politely declined. A 5% service charge is added to all orders. Pursuant to Minn. Stat 177.23 Subd. 9 this charge is not a gratuity for employee service and is the property of the restaurant to distribute.

\*Our regular price includes a 3.99% non-cash adjustment. The purpose of the non-cash adjustment is to incentivize customers to pay with cash. This is an "in-kind incentive" in compliance with section (2)(A) of the Durbin Amendment, a provision of United States Federal Law, 15 U.S.C. & 1690-A. We further provide a Cash Discount from the regular price in accordance with section (4)(c)(4) of the same document. This is meant to inform customers of our regular price in compliance with this law.

## THE LYNHALL TEA SELECTION

### DARK TEA

#### DARK ROSE

Dark tea, rose petals. Full-bodied and smooth with a delicious dusty rose flavor and aroma. Made in Anjua County, Hunan Province, China in 2016.



### BLACK TEA

#### ALBERT SQUARE

Blended on request for the PBS TV show, EastEnders.

A hearty British-style tea blend that goes well with milk and sugar.

#### DARJELLING PUTTABONG 1ST FLUSH

The 2019 1st flush black tea has milk astringency and fantastic aromatics. Notes of sweet prairie grass contrast the fruity, crisp quality of the cup.

#### ENGLISH BREAKFAST DECAF

Made with Ceylon OP tea leaves, this tea has a classic, smooth, and full-bodied British-style profile.

#### RED DAWN

A full and vibrant mouth-feel with savory, earthy flavors that will stay with you from dawn till dusk.

#### SUGAR MAPLE

Sweet and convincing you almost want to pour it on the cakes coming off the griddle.

#### GRASSHOPPER

The temptation of chocolate mint without any booze or sugar. The black tea base is rich, smooth, and present.



### INFUSIONS

#### EARL GREY LAVENDER

Black tea, lavender, cornflower. Floral qualities of lavender with the citrus tang of Bergamont. Aromatic and silky.

#### HAZELNUT ORANGE

Black tea, clove, orange peel, safflower. Smooth, creamy, sweet, and nutty with a lovely hint of citrus in the finish.



### GREEN TEA

#### ORGANIC CLOUDS & MIST

Organic green tea from Zhejiang Province, China. Bright, fresh, refreshing, and a little vegetal.

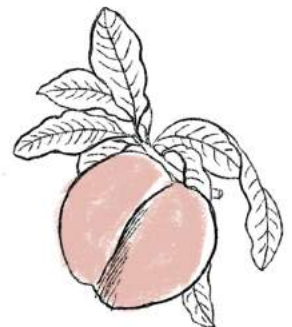
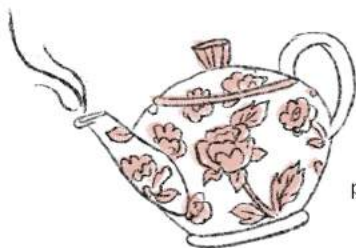
### OOLONG TEA

#### STRAWBERRY OOLONG

Semi-curved oolong tea and strawberry. Chinese oolong from Fujian that is wonderfully sweet, smooth, and fruity.

#### ORANGE CREAM OOLONG

tea, orange flower and safflower. Clean and clear orange citrus coated with a creamy interior.



### WHITE TEA

#### MACHU PEACH-U

White tea, peach, and calendula. Chinese white tea with a prominent peach aroma and flavor that is smooth with lots of body.

### HERBAL

#### CRANBERRY SPICE

Turmeric, clove, raspberry leaf, cinnamon, blackberry leaf, cranberries, ginger, and lemongrass. Sweet, tart, bright, invigorating and medium-bodied.

#### MARGARET SOOTHER

Comforting, relaxing, and delicious. Herbal blend for stressful times.



### FEATURED LIMITED EDITION

### BLACK TEA

#### BLACK JASMINE +\$5

A rare and unique tea. Almost all Jasmine is green or white tea. This blend is a smooth cup giving the soft floral notes but with the additional body. There is also a wonderful legend connected to the area where the tea is grown at Three Rivers Village. According to legend, the immortals in heaven loved tea so much and wanted to plant it here but the area suffered from lack of water. So they guided the rivers to this mountain to make it the perfect place for the highest quality of tea.

