

OpenAsset Integration Data Sheet

22 May 2023

Summary

This document covers the key details of the integration between OpenAsset and Flo10. Data flow is one directional, Albums / Images can be pulled into Flo10 from OpenAsset but cannot be pushed into OpenAsset.

Please note that OpenAsset cloud version is required.

Integration

User Accounts and Roles

All users must have accounts in both Flo10 and OpenAsset.

Please note that Flo10 will not inherit any user roles (such as admin rights) from OpenAsset. Rights specific to Flo10 are allocated in the Flo10 admin pages.

Access Permissions

Flo10 would require single user credentials (Username and Password) to access OpenAsset via the API.

Data Synchronization

Flo10 will retrieve Albums / Images from OpenAsset API. There will usually be a delay of up to 30 minutes for any new or amended images to be reflected in Flo10.

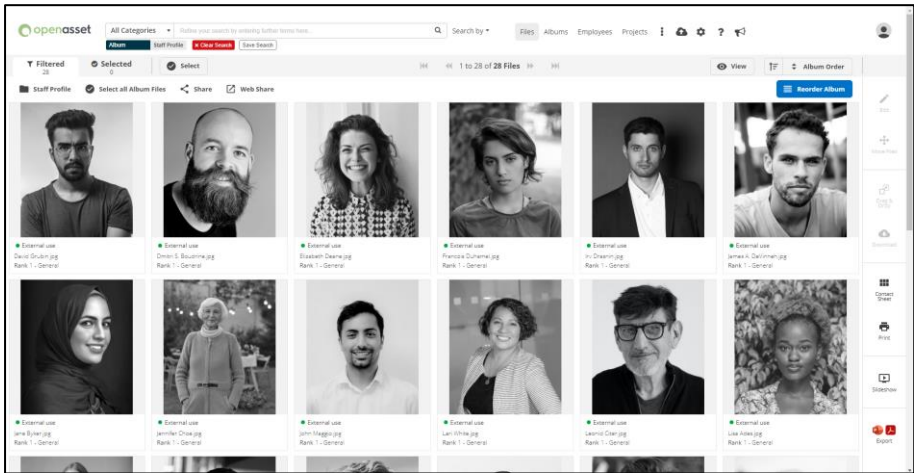
Default Data Mapping

We will bring the following Albums / Images across from your OpenAsset database for display in Flo10. Clicking on an image in Flo10 will load the asset within OpenAsset.

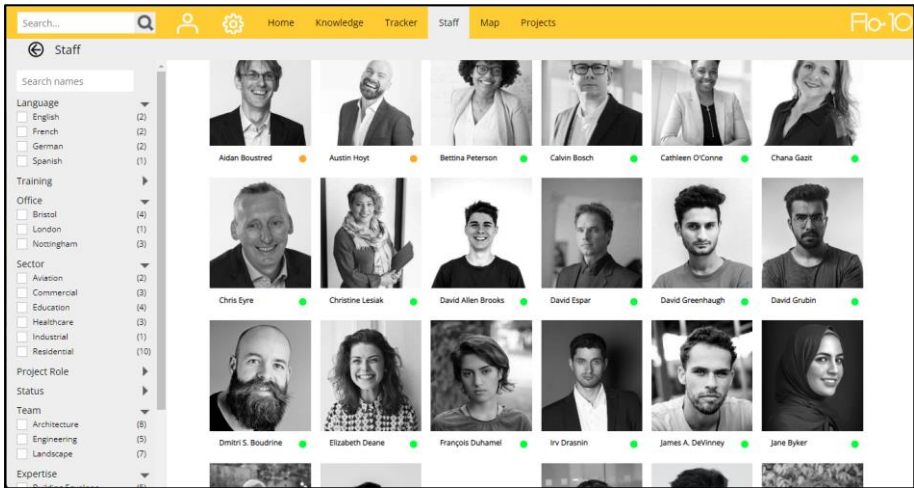
Staff Images

We will pull the staff profile images from OpenAsset into Flo10 for current staff only. OpenAsset Images are cross-referenced by email address and must belong to a single pre-specified OpenAsset Album / Category.

OpenAsset	Flo10
Custom Attribute 'Email'	User Email Address



OpenAsset



Flo10

Images within OpenAsset must have a custom attribute 'email' and the value must match the email address assigned against the user account within Flo10.

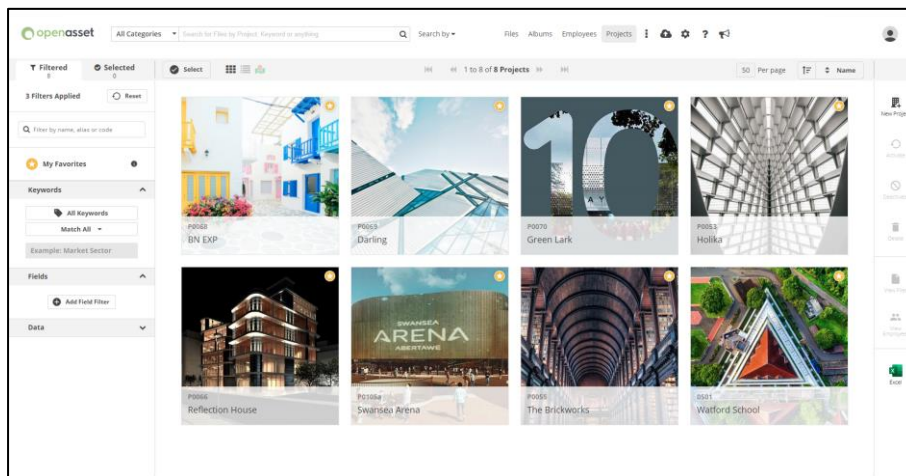
Project Album / Images

Flo10 can display the images from an OpenAsset project album on the associated Flo10 project page. OpenAsset Albums are cross-referenced based on the following criteria.

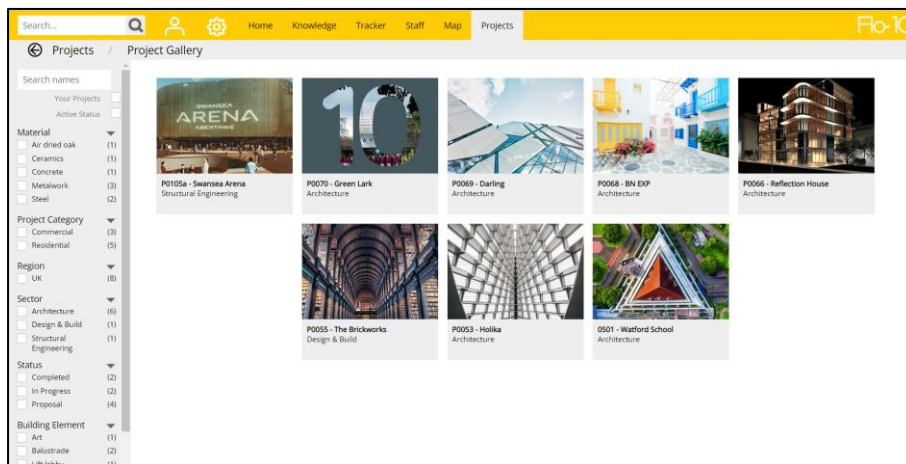
OpenAsset	Flo10
Code	Job Number

OpenAsset Album codes must be an exact match for the job number within Flo10. Albums are automatically synchronised on the creation of a new project. By default, the hero image is the

only synced image and will be the default displayed image. The remaining album images can be synchronised on request and displayed in a slideshow.



OpenAsset



Flo10

It is possible to customise what images are displayed within the album based on their OpenAsset ranking.

Project Image Keywords

It is possible for OpenAsset keywords to be mapped to Flo10 tags and therefore make the images searchable. This would involve customisation and therefore please discuss with your Flo10 project manager or implementation engineer.