

# **PILGRIM RIVER FOREST LIMITED PUBLIC ACCESS**

*The Pilgrim River Project is open to all without discrimination, as an equal opportunity provider*

**Management questions--Contact Partners in Forestry Cooperative  
715-479-8528 partnersinforesstry@gmail.com**

## **PERMITTED USES**

<b>hiking</b>	<b>mountain biking</b>	<b>berry picking</b>
<b>mushroom gathering</b>	<b>skiing</b>	<b>snowshoeing</b>
<b>kayaking</b>	<b>nature observation</b>	<b>canoeing</b>
<b>birdwatching</b>	<b>picnicking</b>	<b>swimming</b>
<b>educational use</b>	<b>dog walking</b>	<b>hunting</b>
<b>fishing</b>		

*(please note, the Pilgrim River is under special fishing regulations, recognizing the presence of Coaster Brook Trout)*

## **PLEASE LEAVE NO TRACE**

**Pack it in; pack it out. Dig a cat hole to dispose of human waste. Leave what you find. Be considerate of others. Protect and enjoy this forest.**

**NO: Motorized vehicles of any type**

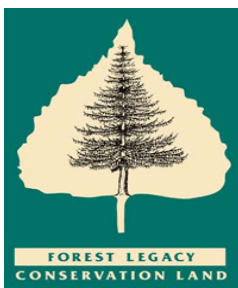
**Removal of float copper or any minerals**

**Removal of wood of any kind**

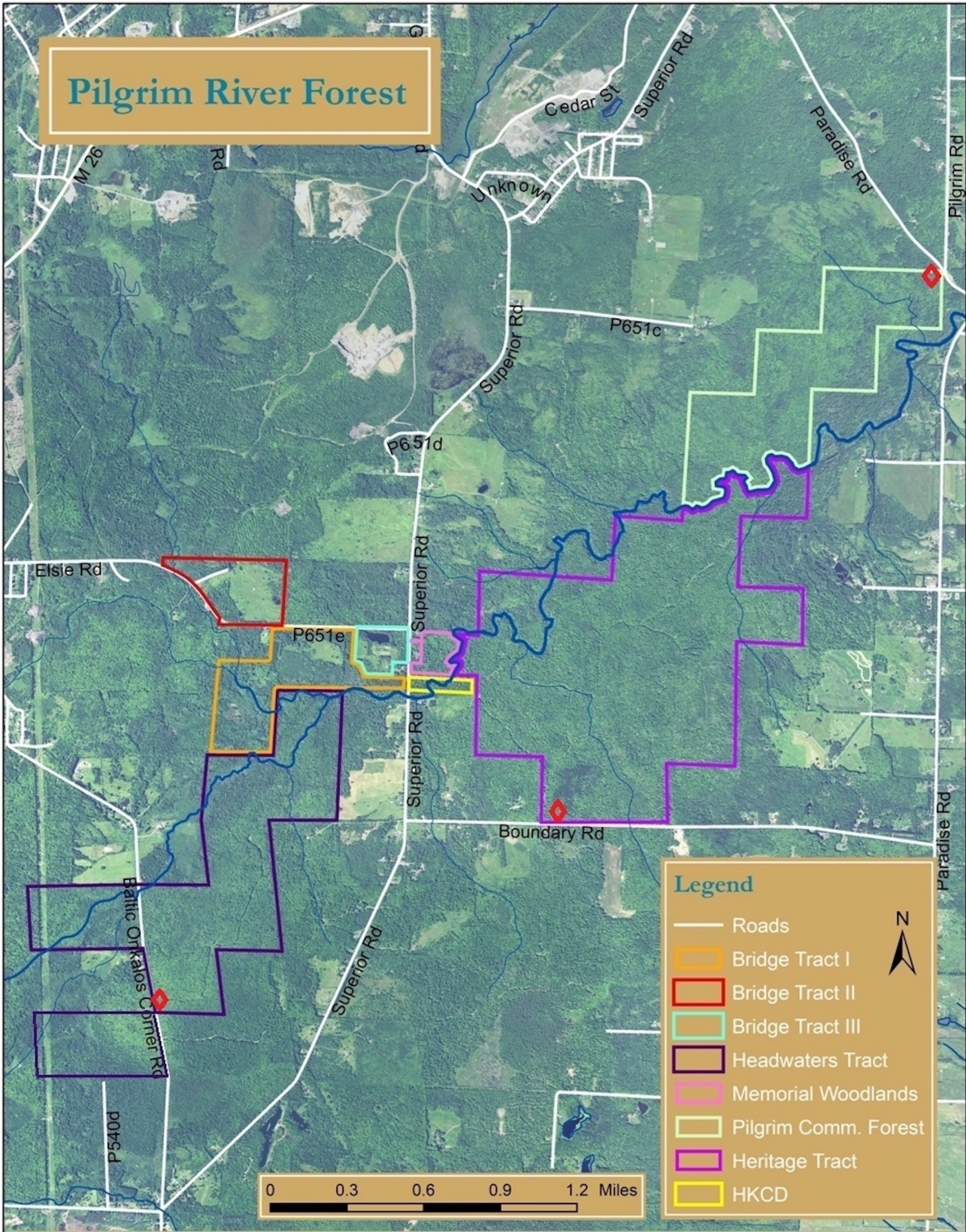
The Pilgrim River Forest is privately owned land with public access rights defined by a Conservation Easement between the landowner and the State of Michigan. The adjoining Pilgrim Community Forest is protected by the USFS Community Forest and Open Space Conservation Program. Funding was provided by the USFS Forest Legacy Program through the Land and Water Conservation Fund, USFS Community Forest Program and local donations.

The land remains on the property tax rolls and periodic timber harvests contribute to the local economy. Areas undergoing timber harvest may be temporarily closed to public access for safety considerations.

***Enjoy your visit & THANK YOU FOR YOUR COOPERATION***



# Pilgrim River Forest



Red Diamonds indicate trail head locations off Baltic-Onkalos, Boundary and Paradise Roads