



VINEYARD WIND

OFFSHORE WIND MARINER UPDATE NO. 25

2nd ANNUAL LOBSTER/SEABASS/ PLANKTON SURVEY ATTENTION MOBILE GEAR FISHERMEN JUNE 12 THROUGH OCTOBER 2020



Vessel: F/V Rock & Roll
Captain: Mohawk Bolin
Hull #: 1049876
Cell phone: 508-692-0894
Standing by on Channel 16 & 6



Vessel: F/V Encourager
Captain: Jarrett Drake
Hull #: MS 3707 BM
Cell phone: 508-789-9809
Standing by on Channel 16 & 6

The School for Marine Science and Technology (SMAST) and the Massachusetts Lobstermen's Association (MLA) are coordinating a lobster/black sea bass/plankton survey in the 501N section of the Vineyard Wind lease area as well as a control area to the east.

Trawls are set in an East/West direction on the 0's and 5's of the 43000 line, and are configured in 7 pot strings approximately 1200 feet long. End lines are marked with radar reflecting highflyers with double flags on the west end, a single flag on the east end, and 22 lb. anchors on both ends.

TRAWL COORDINATES ARE THE MIDPOINT OF THE 1200 FOOT TRAWL:

LEASE AREA

(Degrees/minutes/seconds)

LORAN		LATITUDE	LONGITUDE
14173	43775	41° 6' 35"	70° 30' 29"
14155	43770	41° 6' 26"	70° 27' 15"
14198	43760	41° 3' 54"	70° 33' 7"
14190	43755	41° 3' 28"	70° 31' 27"
14160	43750	41° 3' 38"	70° 26' 19"
14140	43745	41° 3' 31"	70° 22' 43"
14226	43745	41° 1' 10"	70° 36' 17"
14210	43745	41° 1' 36"	70° 33' 46"
14195	43740	41° 1' 21"	70° 30' 59"
14169	43740	41° 2' 4"	70° 26' 53"
14157	43735	41° 1' 44"	70° 24' 33"
14215	43725	40° 58' 51"	70° 32' 55"
14200	43730	40° 59' 54"	70° 30' 57"
14183	43725	40° 59' 42"	70° 27' 50"
14161	43725	41° 0' 18"	70° 24' 20"

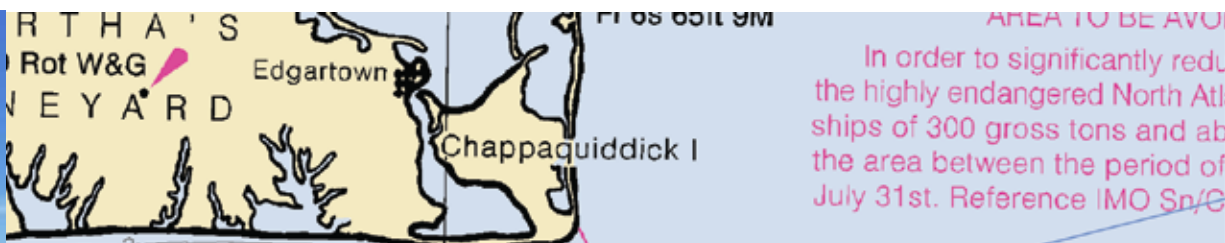
CONTROL AREA

(Degrees/minutes/seconds)

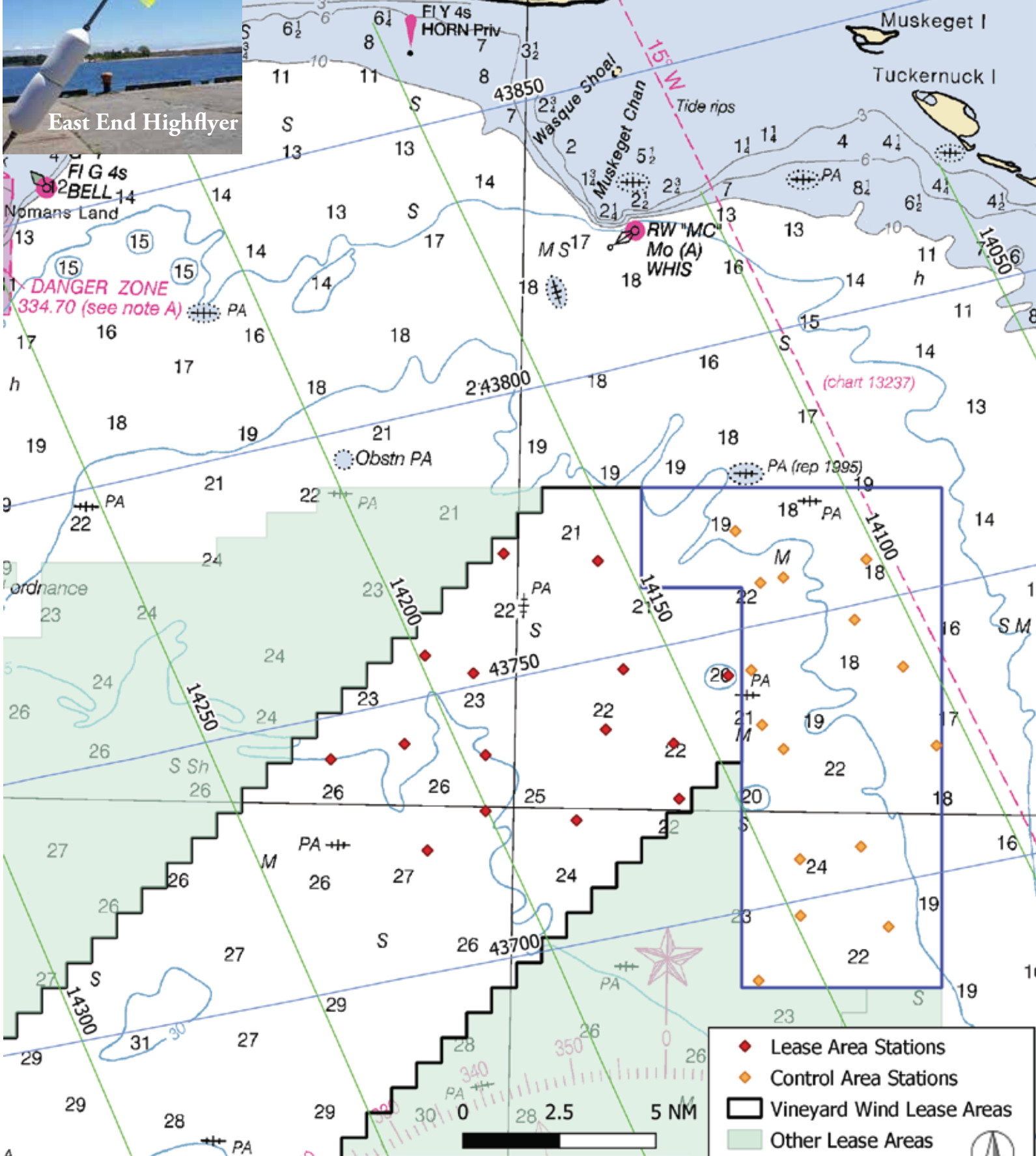
LORAN		LATITUDE	LONGITUDE
14125	43770	41° 7' 16"	70° 22' 33"
14125	43760	41° 5' 56"	70° 21' 40"
14120	43760	41° 6' 5"	70° 20' 53"
14102	43760	41° 6' 35"	70° 18' 3"
14135	43745	41° 3' 40"	70° 21' 56"
14110	43750	41° 5' 1"	70° 18' 25"
14105	43740	41° 3' 49"	70° 16' 44"
14138	43735	41° 2' 15"	70° 21' 32"
14136	43730	41° 1' 38"	70° 20' 47"
14106	43725	41° 1' 47"	70° 15' 33"
14143	43710	40° 58' 47"	70° 20' 10"
14130	43710	40° 59' 8"	70° 18' 5"
14148	43700	40° 57' 19"	70° 20' 7"
14162	43690	40° 55' 37"	70° 21' 31"
14132	43695	40° 57' 4"	70° 17' 6"

We encourage any fishermen working in the area to contact the vessel captains directly or contact:

Beth Casoni – MA Lobstermen's Assoc. 508.738.1245 / Crista Bank – FL Vineyard Wind 508.525.0421



AREA TO BE AVOIDED
In order to significantly reduce the highly endangered North Atlantic right whale population, the area between the period of July 31st. Reference IMO Sp/C



- ◆ Lease Area Stations
- ◆ Control Area Stations
- ▭ Vineyard Wind Lease Areas
- ▭ Other Lease Areas
- ▭ SMAST Control Area

