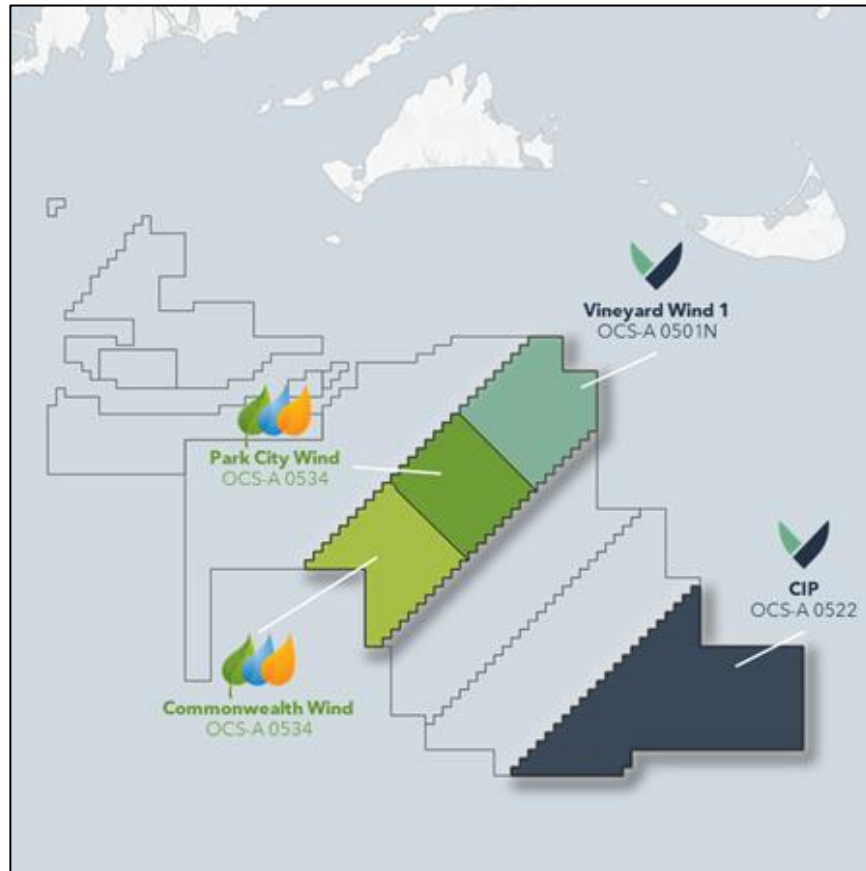


**Massachusetts Fisheries Working Group  
December 10, 2021**

# Vineyard Wind Ownership Transition

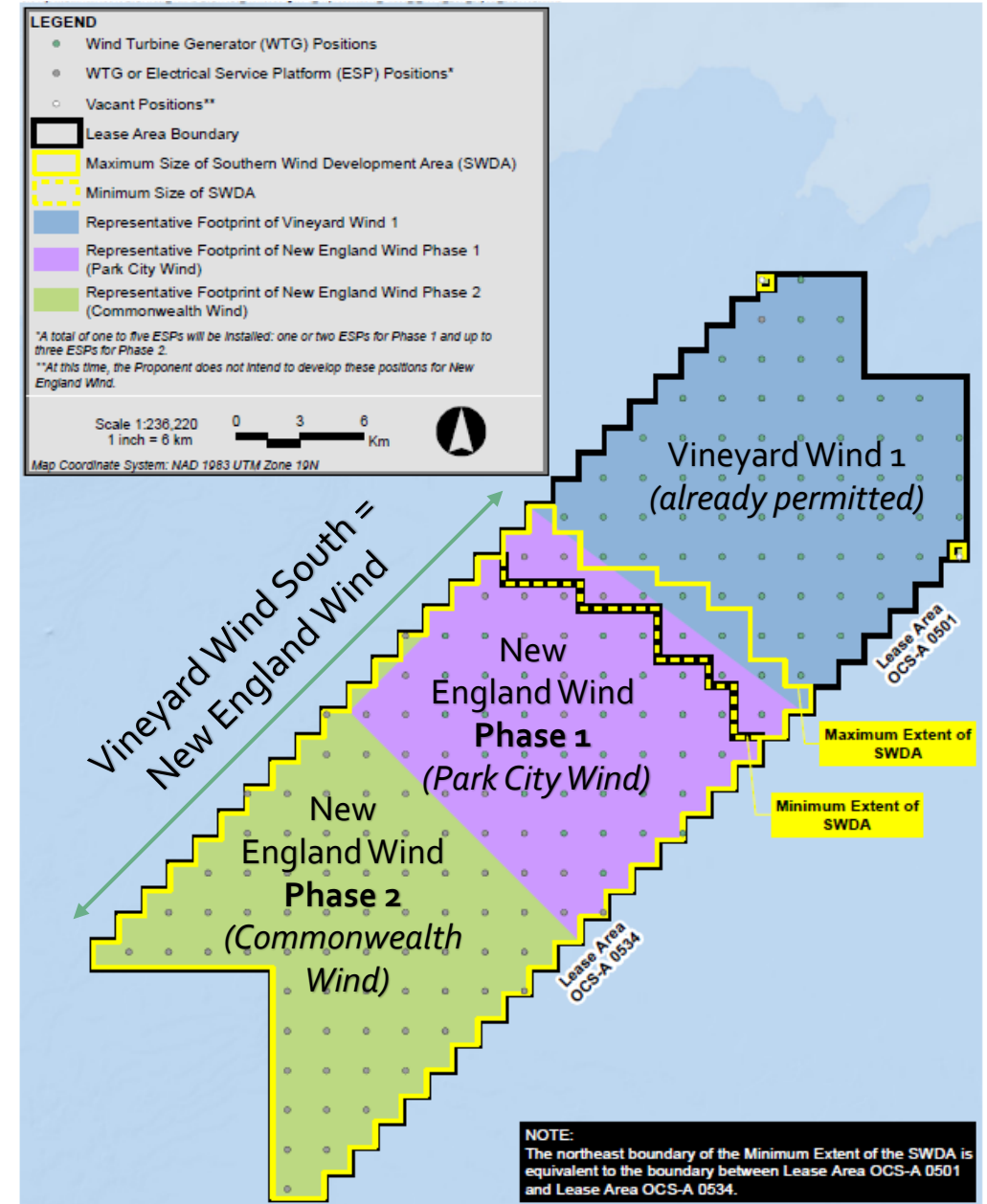


## Overview

- Avangrid Renewables and Copenhagen Infrastructure Partners are restructuring their 50/50 Vineyard Wind joint venture
- Vineyard Wind 1 will remain a 50/50 joint venture between the two companies
- Lease Area OCS-A 534, containing Park City Wind and Commonwealth Wind, will be owned by Avangrid Renewables
- Lease Area OCS-A 522 will be owned by Copenhagen Infrastructure Partners

# Updated Name

- Vineyard Wind South (Lease Area OCS-A 501S)
- Changed names in October 2021 and is now
- **New England Wind Lease Area OCS-A 534**
  - Phase 1—Park City Wind
  - Phase 2—Commonwealth Wind



# Proposed Development - Phases

- New England Wind includes two Phases
- Each Phase has its own Project Design Envelope

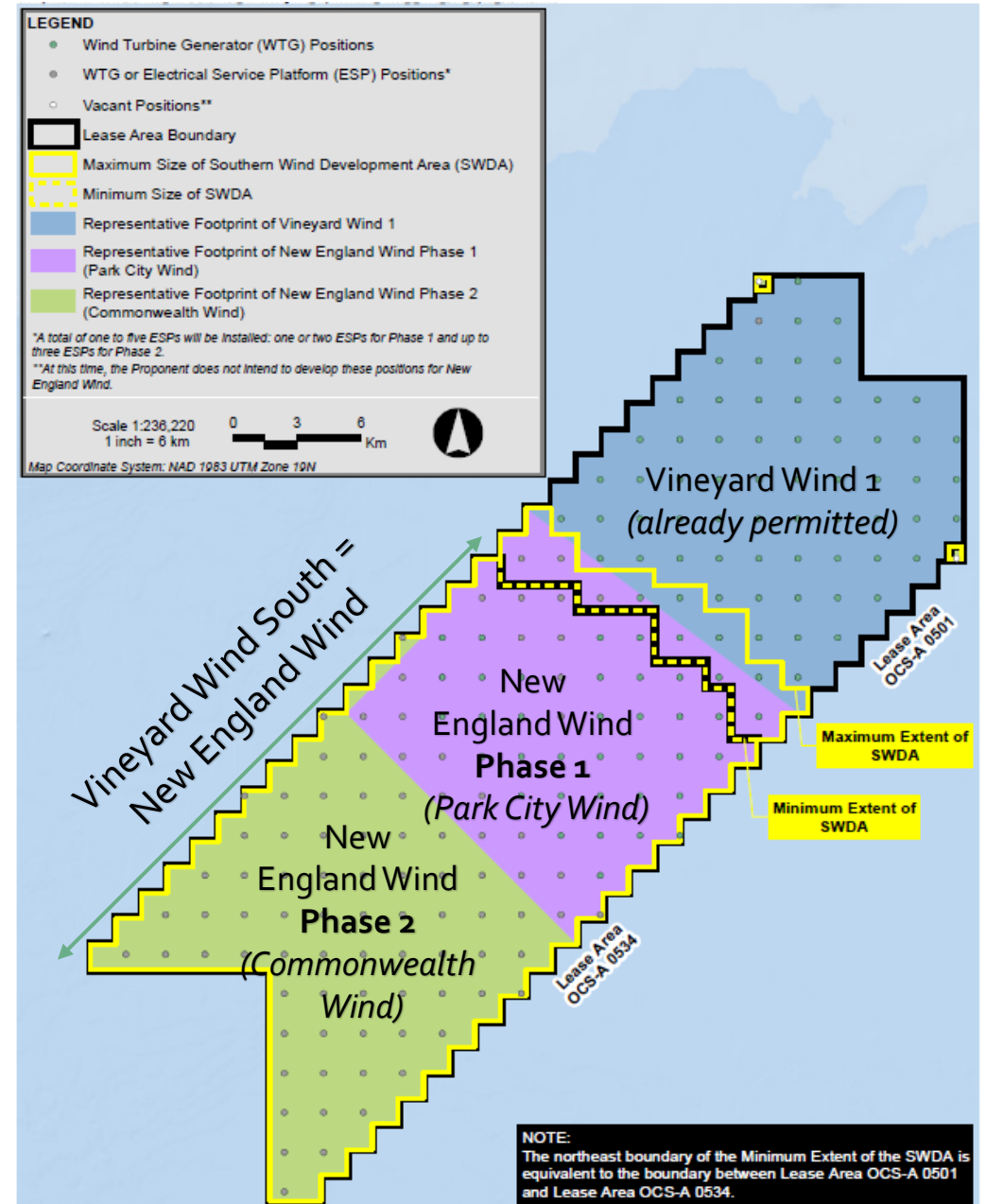
## Phase 1 (Park City Wind)

- 804 MW - Connecticut
- 13 to 16 MW turbine size range
- 50–62 turbines
- 1-2 electrical service platforms

## Phase 2 (Commonwealth Wind)

- 1,200–1,500 MW (no power purchase agreement yet)
- 13 to 19 MW turbine size range
- 64 to 79 turbines
- Up to 3 Electrical service platforms

The Construction and Operations Plan analyzes the maximum impacts for each Phase



# Proposed Development – Updates

## Phase 2 Offshore Export Cable Corridor Variants

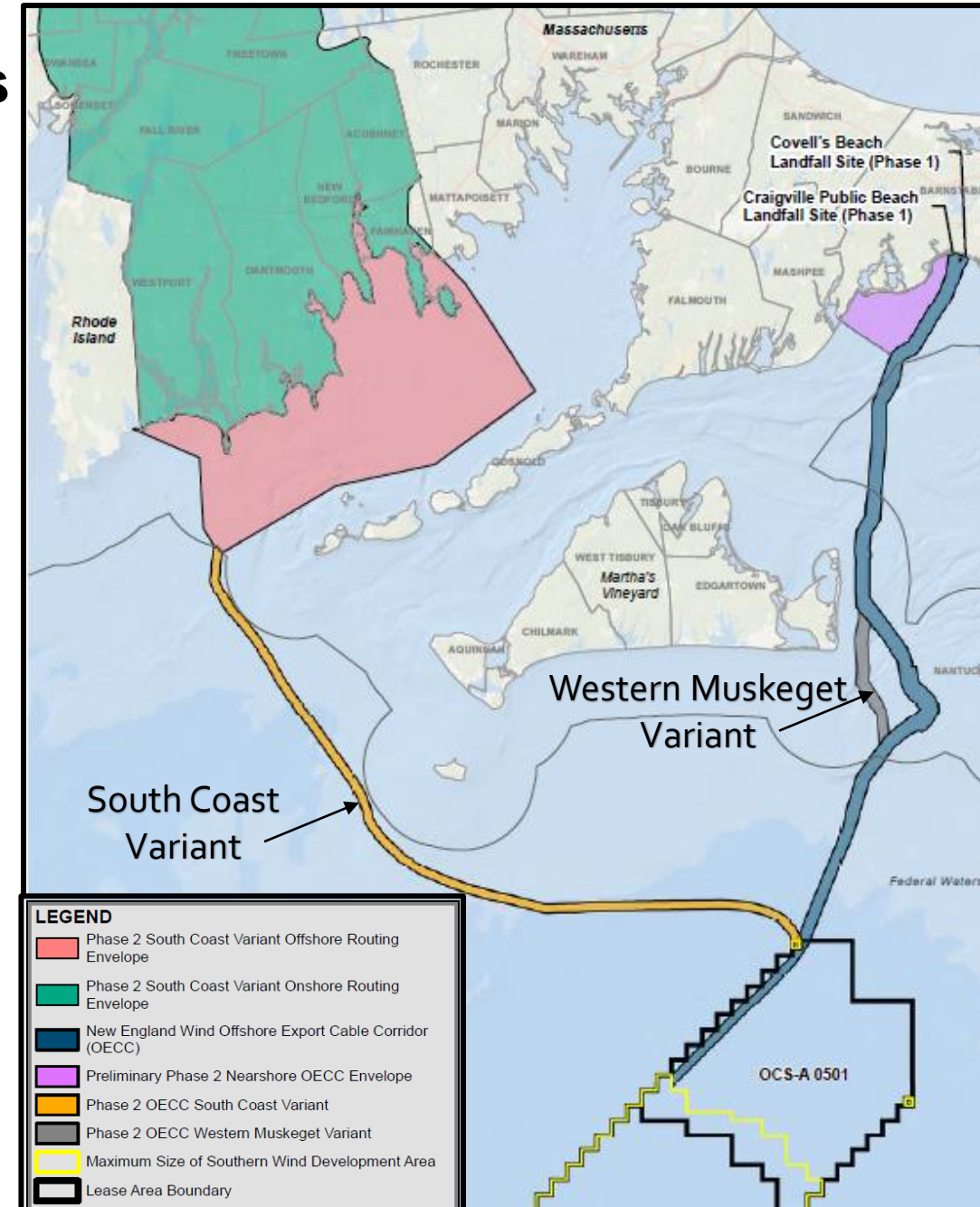
Two new Phase 2 Offshore Export Cable Corridor variants identified in the event that technical, logistical, grid connection, or other unforeseen issues arise

### Phase 2 OECC Western Muskeget Variant (December 2021 COP update)

- 1 or 2 offshore export cables may be installed in the western Muskeget variant
- Included as part of Vineyard Wind 1 Offshore Export Cable Corridor

### Phase 2 OECC South Coast Variant (February COP Addendum)

- Routed from Lease Area OCS-A 0501 to the state waters boundary near Buzzards Bay
- 2 or 3 offshore export cables may be installed in the variant if:
  - a) engineering issues through Muskeget
  - b) landfall issues in Barnstable
  - c) grid interconnection issues at the West Barnstable Substation arise





# Proposed Development – Updates

Minor updates to Project Design Envelope for New England Wind:

1. The option in Phase 2 for a reactive compensation station (booster station) will be removed.
2. Removed the option to use gravity pad bottom-frame foundations for Phase 2 wind turbine generators

Foundation options:

Monopile  
Phase 1 & 2



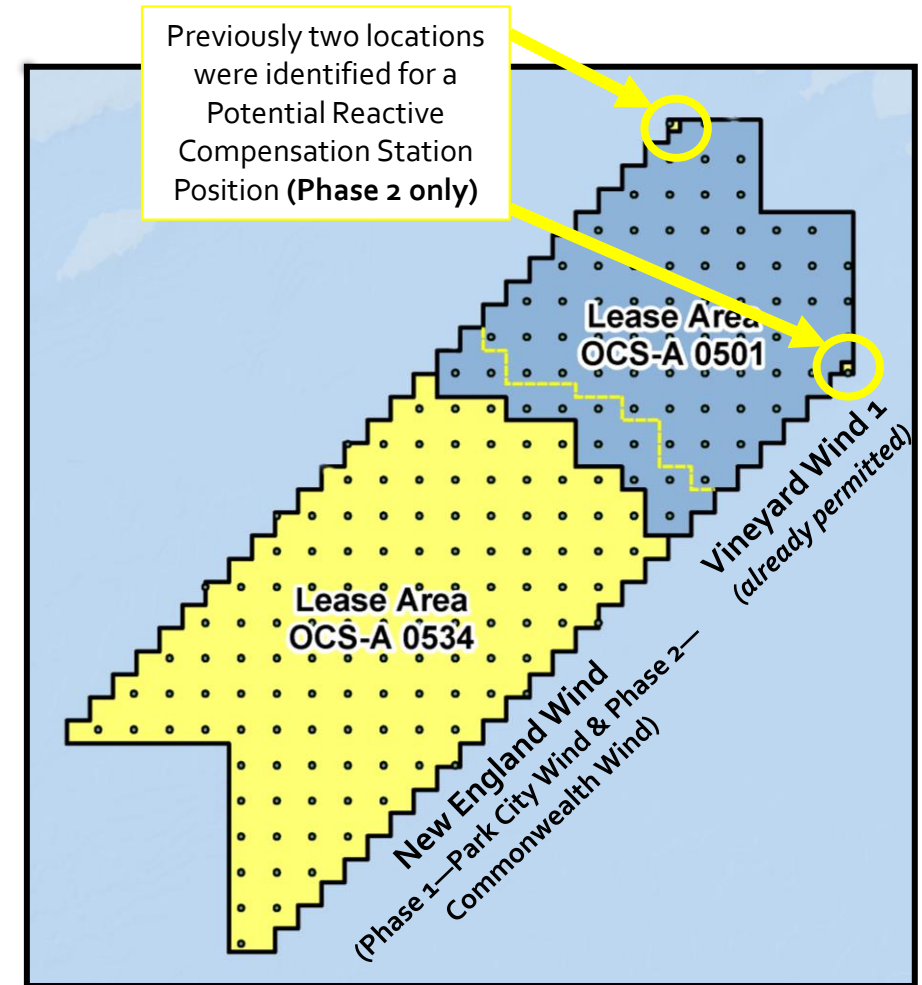
Jacket  
Phase 1 & 2



Bottom Frame  
Phase 2



(piles or suction buckets)



# BOEM Public Comment Period

## Additional Cable Variant Open Comment Period

- Federal Register Notice Published– November 22<sup>nd</sup>, 2021
- 30-day public comment period ends December 22<sup>nd</sup>, 2021

## Written comments can be submitted:

- Delivered by mail or delivery service, enclosed in an envelope labeled, “NEW ENGLAND WIND COP EIS” and addressed to Program Manager, Office of Renewable Energy, Bureau of Ocean Energy Management, 45600 Woodland Road, Sterling, Virginia 20166; or
- Through the regulations.gov web portal: Navigate to <http://www.regulations.gov> and search for Docket No. BOEM-2021-0047. Click on the “Comment” button below the document link. Enter your information and comment, then click “Submit Comment.”

## New England Wind Virtual Meeting Room:

[New England Wind Virtual Meeting Room | Bureau of Ocean Energy Management \(boem.gov\)](#)

# Questions?

- **Vineyard Wind 1 – OCS-A-501**
  - Crista Bank  
[cbank@vineyardwind.com](mailto:cbank@vineyardwind.com)  
508-525-0421

- **New England Wind – OCS-A- 534**
  - Caela Howard  
[caelahoward@avangrid.com](mailto:caelahoward@avangrid.com)  
860-575-3501