



BA *Concrete*
Products

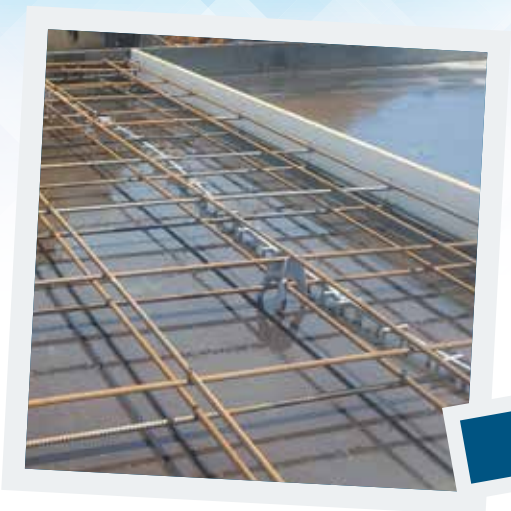
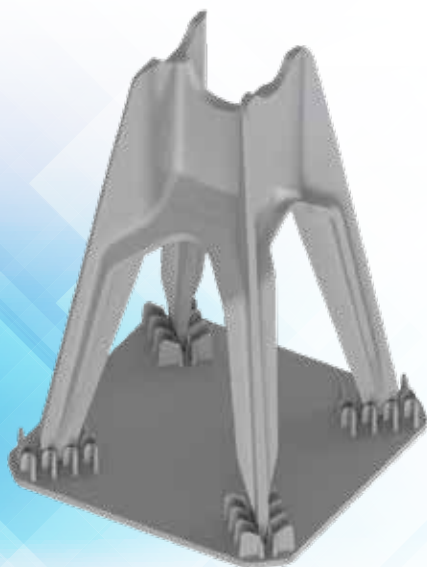
**NEW
PRODUCT**

TOWER CHAIR SERIES



- *Tilt-up / Exposed concrete applications*
- *Mininal Footprint*
- *Maximum concrete consolidation*
- *2 sizes per chair / low inventory*
- *850 LB load rating*

*Sand plate
option*



Tower Chair Series

Part No.	Chair Height	Rebar Size	Bag Count	Skid Count	Bags per Skid
RTC-100	1" - 1.5"	#3 - #10	300	19,200	64
RTC-150	1.5" - 1.75"		250	16,000	64
RTC-200	2" - 2.5"		225	14,400	64
RTC-250	2.5" - 2.75"		250	16,000	64
RTC-300	3" - 3.5"	#3 - #10	275	7,150	26
RTC-325	3.25" - 3.75"		225	5,850	26
RTC-400	4" - 4.5"		180	4,680	26
RTC-425	4.25" - 4.75"		165	4,290	26
RTC-500	5" - 5.5"	#3 - #10	150	3,900	26
RTC-525	5.25" - 5.75"		125	3,250	26
RTC-600	6" - 6.5"		100	2,600	26
RTC-625	6.25" - 6.75"		80	2,080	26
RTC-700	7" - 7.5"	#3 - #10	70	1,820	26
RTC-725	7.25" - 7.75"		60	1,560	26
RTC-800	8" - 8.5"		50	1,300	26
RTC-825	8.25" - 8.75"		45	1,170	26

**NEW
DESIGN**

Slab Bolsters



QWIK-LOK SLAB BOLSTER



Plastic rebar chair lengths for cost efficient reinforcement. Ends are connectible achieving any lengths desired for large scale construction projects.

- *Twelve size options available*
¾", 1", 1¼", 1½", 1¾", 2", 2¼", 2½", 2¾", 3", 3½", and 4".
- *Individual pieces easily snap together to form continuous lengths*
- *New design allows you to separate pieces as well if required*
- *Patented Canada & USA*
- *Constructed out of a durable non-corrosive polycarbonate material*
- *Points on legs ensure minimal surface contact*
- *Manufactured in 2.5 ft, 5 ft, & 10 ft lengths*
- *Chair sections are conveniently boxed or bundled for easy storage and shipping*
- *100% Recycled Polycarbonate Plastic*
- *Made in Canada*



2.5 ft. lengths



5 ft. lengths



10 ft. lengths



- *Bolster chair sections can be shipped in 2.5ft length box quantities.*
- *Or assembled in either 5 ft or 10ft lengths; shipped in bundles. Minimum order of 1 full pallet, if bundled.*

Bolster Chair Series

Part No.	Chair Height	Box Count	Box Skid Count	Skid Weight	Boxes per Skid
CRC-075	0.75" (20 mm)	375 ft	9,000 ft	816 lbs	24
CRC-100	1" (25 mm)	300ft	7,200 ft	744 lbs	24
CRC-125	1.25" (30 mm)	250 ft	6,000 ft	720 lbs	24
CRC-150	1.5" (40 mm)	225 ft	5,400ft	689 lbs	24
CRC-175	1.75" (45 mm)	200 ft	4,800 ft	660 lbs	24
CRC-200	2" (50 mm)	188 ft	4,500 ft	665 lbs	24
CRC-250	2.5" (65 mm)	150ft	3,600 ft	583 lbs	24
CRC-275	2.75" (70 mm)	125 ft	3,000 ft	600 lbs	24
CRC-300	3" (75 mm)	125 ft	3,000 ft	528 lbs	24



**boxed = 2.5 FT lengths

Part No.	Chair Height	Bundle Count LIN FEET	Skid Count LIN FEET	Bundles per Skid	Skid Weight
CRC-075P	0.75" (20 mm)	100	8,400	84	1480 lbs
CRC-100P	1" (25 mm)	100	7,200	72	1530 lbs
CRC-125P	1.25" (30 mm)	100	6,000	60	1425 lbs
CRC-150P	1.5" (40 mm)	100	5,000	50	1326 lbs
CRC-175P	1.75" (45 mm)	100	4,500	45	1300 lbs
CRC-200P	2" (50 mm)	100	4,500	45	1314 lbs
CRC-250P	2.5" (65 mm)	100	3,200	32	1200 lbs
CRC-300P	2.75" (70 mm)	50	1,250	25	1230 lbs
CRC-350P	3" (75 mm)	50	1,250	25	1040 lbs

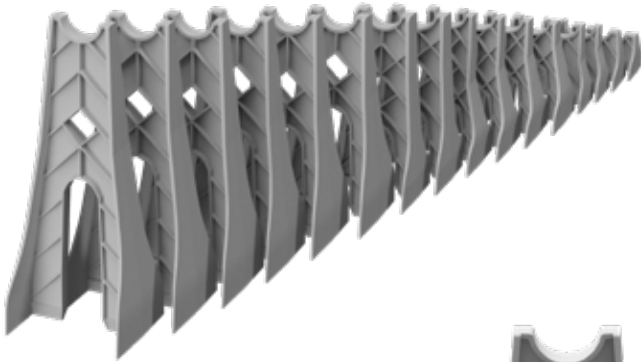


SKIDS are DOUBLE STACKED WHEN SHIPPING. A DOUBLE STACKED CRC-100P WOULD CONTAIN **14,400 LIN FEET**

**bundled = 5 FT lengths

***bundled = for 10 FT length info contact us or visit our website

H-Chair Series



These rebar chairs offer the strongest rebar support available. Specifically designed to support heavy reinforcement in concrete foundations, heavy slabs and also specially structures. Constructed out of a durable non-corrosive plastic they cannot change shape and will provide uniform concrete cover. Chairs will accept any bar diameter.

Visit our website for complete list of sizing specification and also shipping quantities

- *1" to 11.5" sizing (½" increments)*
- *Accepts from #3 - #10 rebar*
- *850 lbs weight capacity*
- *Wide base allows for solid footing*
- *Constructed out of a durable non-corrosive plastic*
- *DOT approved Canada & USA*
- *100% Recycled Polycarbonate Plastic*
- *Made in Canada*



NEW
Sand plate
option



H Chair Series

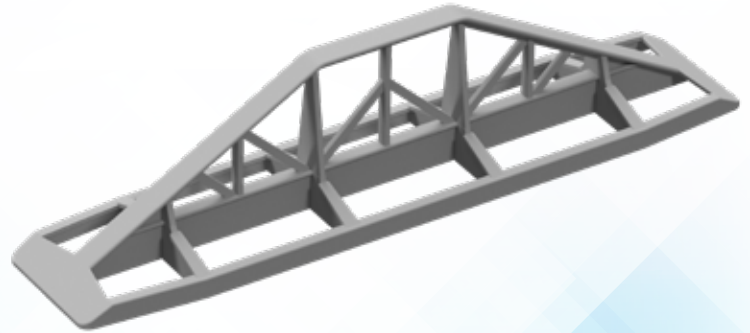
Part. No.	Chair Height	Rebar Size	Bag Count	Skid Count	Bags per Skid	Skid Weight
RBH-SP <i>*SandPlate</i>	ALL SIZES		500	13,000	26	1300 lbs
RBH-1	1" (25 mm)		500	32,000	64	1267 lbs
RBH-125	1.25" (30 mm)	#3-#10	500	32,000	64	1306 lbs
RBH-15	1.5" (40 mm)	FOR ALL	400	25,600	64	806 lbs
RBH-2	2" (50 mm)	SIZES	350	22,400	64	685 lbs
RBH-25	2.5" (65 mm)		300	19,200	64	800 lbs
RBH-275	2.75" (70 mm)		250	16,000	64	608 lbs
RBH-3	3" (75 mm)		375	9,750	26	690 lbs
RBH-35	3.5" (90 mm)	#3-#10	375	9,750	26	735 lbs
RBH-4	4" (100 mm)	FOR ALL	300	7,800	26	754 lbs
RBH-45	4.5" (115 mm)	SIZES	300	7,800	26	832 lbs
RBH-5	5" (130 mm)		200	5,200	26	796 lbs
RBH-55	5.5" (140 mm)		180	4,680	26	780 lbs
RBH-6	6" (150 mm)		120	3,120	26	637 lbs
RBH-65	6.5" (165 mm)		110	2,860	26	588 lbs
RBH-7	7" (180 mm)		100	2,600	26	692 lbs
RBH-75	7.5" (190 mm)	#3-#10	90	2,340	26	580 lbs
RBH-8	8" (205 mm)	FOR ALL	60	1,560	26	572 lbs
RBH-85	8.5" (215 mm)	SIZES	60	1,560	26	567 lbs
RBH-9	9" (230 mm)		50	1,300	26	538 lbs
RBH-95	9.5" (240 mm)		50	1,300	26	551 lbs
RBH-10	10" (255 mm)		50	1,300	26	570lbs
RBH-105	10.5" (266mm)		50	1,300	26	580 lbs
RBH-11	11.5" (292mm)		45	1,170	26	550lbs
RBH-115	11.5" (292mm)		45	1,170	26	570 lbs
RBH-12	12" (305mm)		40	1,040	26	560 lbs

Slider Series

CS Series Column Slider

This chair with its ridged build has the ability to slide a moving component into a stationary component, a 40mm (1½") column or beam guiding chair.

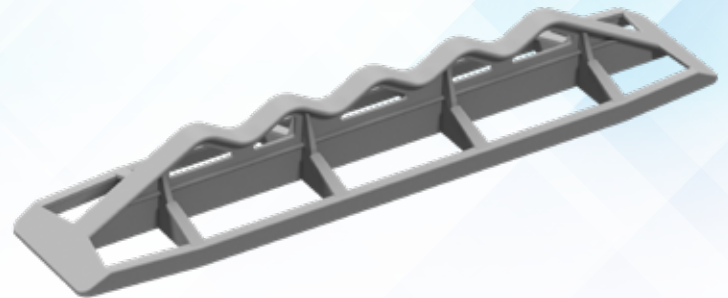
- *Five size options available - 1½", 2", 2½", 3", and 3½"*
- *Available in two different composite types, for either regular or higher strength application*
- *Provides greater stability than wheel chairs*



CS Slider

CSR Series Column Slider

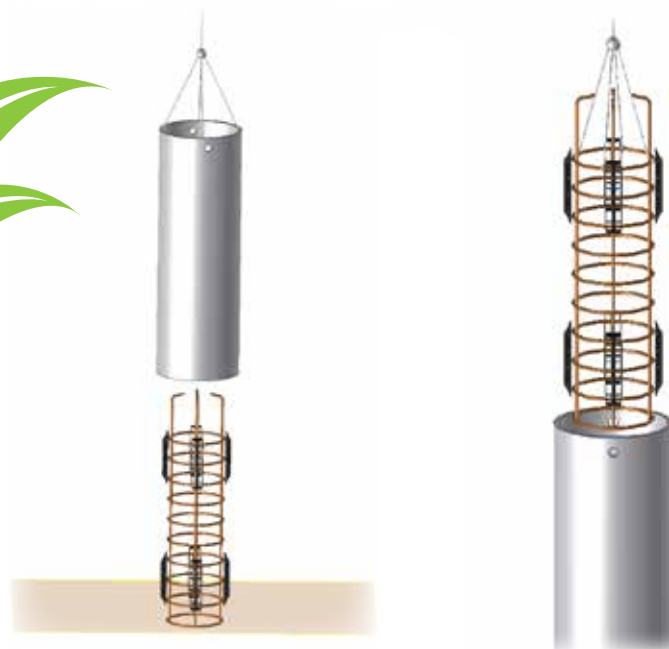
- *Five size options available - 1½", 2", 2½", 3", and 3½"*
- *New pointed design ensures minimal surface*

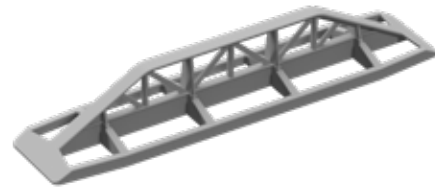


CSR Slider

All Column Slider

- *100% Recycled Plastic*
- *Made in Canada*

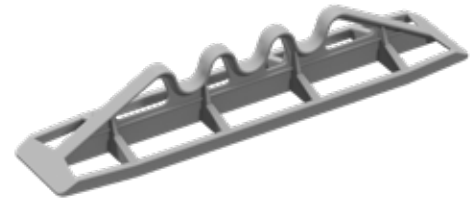




Column Slider Series

Part No.	Chair Height	Material Strength	Box Count	Box Weight	Skid Count	Skid Weight	Boxes per Skid
CS-150P	1.5" (40 mm)	regular	84	20.5 lbs	2,016	492 lbs	24
CS-200P	2"	regular	75	20 lbs	1,800	480 lbs	24
CS-250P	2.5"	regular	60	20 lbs	1,440	480 lbs	24
CS-300P	3" (75 mm)	regular	50	22.2 lbs	1,200	533 lbs	24
CS-350P	3.5" (90 mm)	regular	45	22 lbs	1,080	528 lbs	24

* Heavy Duty type available



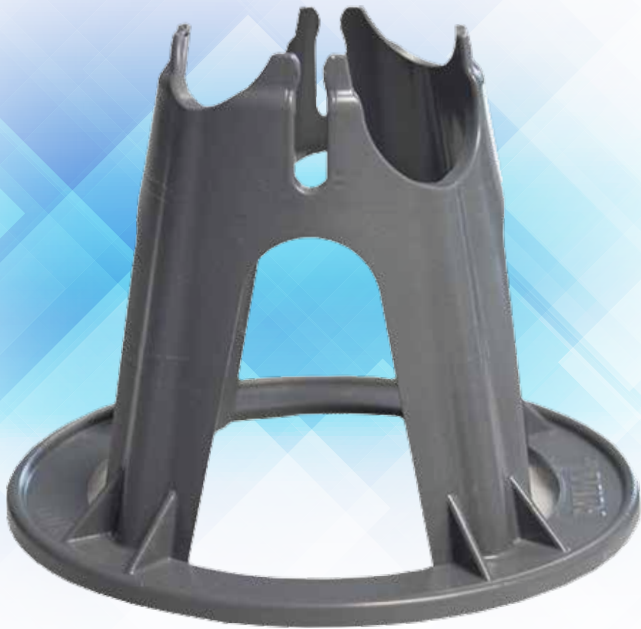
Column Slider Ridged Series

Part No.	Chair Height	Material Strength	Box Count	Box Weight	Skid Count	Skid Weight	Boxes per Skid
CSR-150P	1.5" (40 mm)	regular	84	20 lbs	2,016	480 lbs	24
CSR-200P	2"	regular	75	20 lbs	1,800	480 lbs	24
CSR-250P	2.5"	regular	60	20 lbs	1,440	480 lbs	24
CSR-300P	3" (75 mm)	regular	50	22.5 lbs	1,200	540 lbs	24
CSR-350P	3.5" (90 mm)	regular	45	22 lbs	1,080	528 lbs	24

* Heavy Duty type available



Cone Chair Series



These rebar chairs offer the strongest rebar support available. Constructed out of a durable non-corrosive plastic they cannot change shape and will provide uniform concrete cover.

- *Six size options available. 1" - 1½", 1½" - 2", 2½" - 3", 3½" - 4", 4½" - 5" and 5½" - 6"*
- *Chairs will accept bars up to 1" in diameter at two height options per chair*
- *Constructed out of an extremely durable polycarbonate resin.*
- *DOT approved Canada & USA*
- *Wide base allows for solid footing*
- *Compact stacking*
- *Now accepts 1/8" - 3/16" mesh*
- *100% Recycled Plastic*
- *Made in Canada*

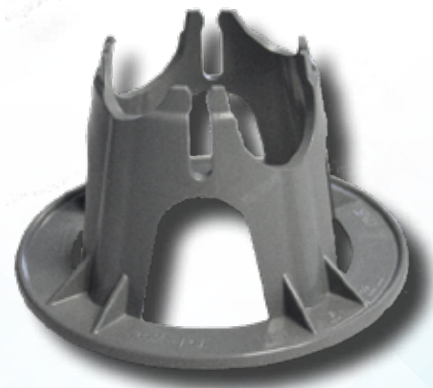


Cone Chair Series

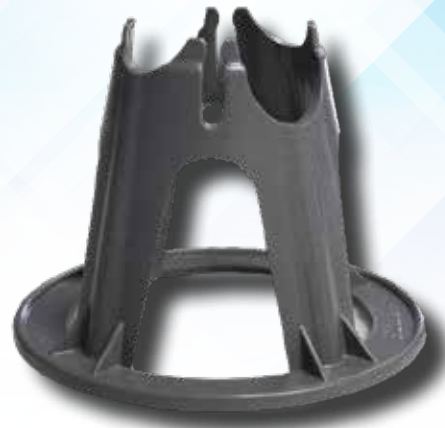
Part No.	Available Colours	Chair Height	Rebar Size	Box Count	Box Weight	Skid Count	Skid Weight	Boxes per Skid
RC-001	Grey	1 - 1.5" (25 - 38 mm)	#3-#8	250	20 lbs	11,000	880 lbs	44
RC-01	Grey	1.5 - 2" (40 - 50 mm)	#3-#8	250	20 lbs	11,000	880 lbs	44
RC-02	Grey	2.5 - 3" (65 - 75 mm)	#3-#8	250	28 lbs	9,000	1008 lbs	36
RC-03	Grey	3.5 - 4" (89 - 102 mm)	#3-#8	160	30 lbs	5,120	960 lbs	32
RC-04	Grey	4.5 - 5" (115 - 125 mm)	#3-#8	160	35 lbs	4,480	1,120 lbs	28
RC-05	Grey	5.5" - 6" (140 mm & 152 mm)	#3-#8	120	30 lbs	3,360	1,120 lbs	28



RC-03



RC-01



RC-02

Wheel Series



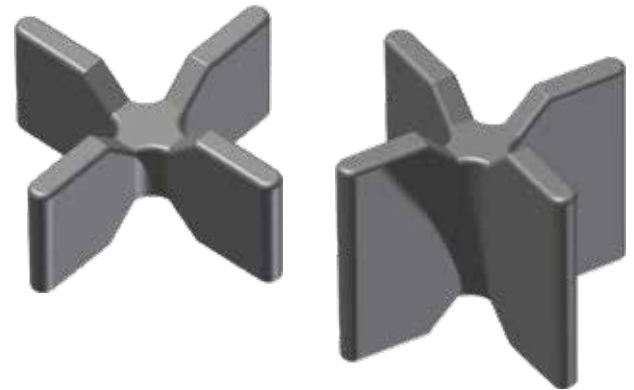
- *Four height options available*
- *1", 1½", 2" & 3" cover height*
- *Chairs will accept #3 and #6 wire*
- *Constructed out of a durable non-corrosive plastic*
- *Rods snap easily into chairs*

Part No.	Chair Height	Rebar Size	Box Count	Box Weight	Skid Count	Skid Weight	Boxes per Skid
RWC-010	1" (25 mm)	Wire #3	1,500	33 lbs	30,000	660 lbs	20
RWC-015	1.5" (40 mm)	Wire #3 & #6	700	32 lbs	14,000	640 lbs	20
RWC-020	2" (50 mm)	Wire #3 & #6	400	26 lbs	8,000	520 lbs	20
RWC-030	3" (75 mm)	Wire #3 & #6	170	24 lbs	3,400	480 lbs	20



X Chair Series

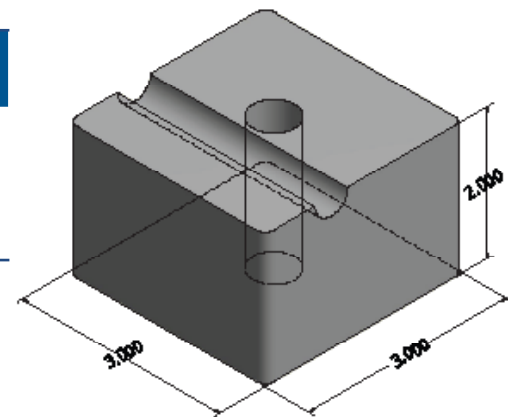
- *Non-corrosive durable plastic construction*
- *½", ¾", 1", 1½", 2" cover height*
- *Accepts #3 - #6 rebar*
- *1,400 lbs capacity*
- *100% Recycled Plastic*
- *Made in Canada*



Part No.	Chair Height	Rebar Size	Bag Count	Bag Weight	Skid Count	Skid Weight	Bags per Skid
RCX-05	0.5" (15 mm)	#3 - #6	2,000	20.2 lbs	128,000	1293 lbs	64
RCX-075	0.75" (20 mm)	#3 - #6	1,500	20.6 lbs	96,000	1318 lbs	64
RCX-10	1" (25 mm)	#3 - #6	750	16.2 lbs	48,000	1,036 lbs	64
RCX-15	1.5" (40 mm)	#3 - #6	500	16.2 lbs	32,000	1,036 lbs	64
RCX-20	2" (50 mm)	#3 - #6	350	16.2 lbs	22,400	1,036 lbs	64

Concrete Dobies

Part No.	Chair Size	Chair Type	Qty	MPA	Skid Count	Weight
CON-23	3" x 3" x 2"	with wire hole	7 piece	65 MPA	1,500	2,000 lbs
CON-34	4" x 4" x 3"	no wire hole	1 piece	65 MPA	792	3,400 lbs



Mesh Chair Series



- 1", 1½", 2" & 3" cover height
- 350 lbs capacity
- Accepts 1/8" - 3/8" (3mm - 10mm) mesh
- Non-corrosive durable plastic construction
- Rods snap easily into chairs
- Clips will not change shape and will provide uniform concrete cover
- 100% Recycled Plastic
- Made in Canada



Part No.	Chair Height	Rebar Size	Box Count	Bag Weight	Skid Count	Skid Weight	Boxes per Skid
TMC-100	1" (25 mm)	3/8" (10mm)	1,200	5.4 lbs	36,000	324 lbs	30
TMC-150	1.5" (40 mm)	3/8" (10mm)	1,000	6.3 lbs	30,000	529 lbs	30
TMC-200	2" (50 mm)	3/8" (10mm)	800	7.2 lbs	24,000	461 lbs	30
TMC-300	3" (75 mm)	3/8" (10mm)	500	11.8 lbs	15,000	755 lbs	30



OSHA Safety Cap

OSHA Rebar Safety Caps provide the protection you need from protruding rebar at your construction and pre-cast sites. They can be used to protect employees and equipment from exposed rebar, pipe, and anchor bolts. These high-quality caps are a safety orange color for excellent visibility, and fit #3-#7 or #7-#11 rebar. Protective rebar caps are of use where the danger of impalement is present.



KAP-308

- **Approved by California OSHA #C1718AG and OSHA 1723AG**
- **Complies with Federal OSHA 701 (b).**
- **Made of engineered high-impact plastic.**
- **16 Sq Inches top surface area aids in protection**
- **Made in USA**
- **Self-centering formed steel insert seats cover perpendicular to rebar**

Part No.	Rebar Size	Box Count	Box Weight	Skid Count	Skid Weight	Boxes per Skid
KAP-308	#3 - #7	25	12	2,500	1,200	100
KAP-919	#7 - #11	25	14	2,500	1,400	100





CALGARY

8516 - 40 Street SE. Calgary, AB T2C 2P2
ph: 403-819-9859
E-mail: luke@betterair.ca

TORONTO

454 Innovation Way, Unit 1
Woodstock, Ontario
ph: 519-608-8443 E-mail: brettb@oca-on.ca

CHICAGO

1120 Peterson Road Grayslake, IL 60030
ph: 866-457-5710
E-mail: sales@ocm-inc.com

EASTERN USA

3 Fairfield Boulevard Wallingford, CT 06492
ph: 888-765-9565
E-mail: sales@polylok.com

WINNIPEG

Box 490 MacGregor, MB R0H 0R0 CANADA
ph: 204.252.2333
E-mail: sales@betterair.ca