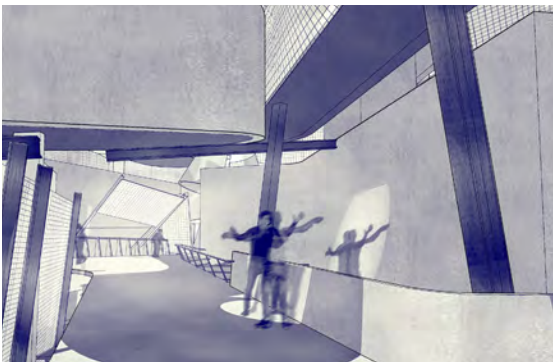
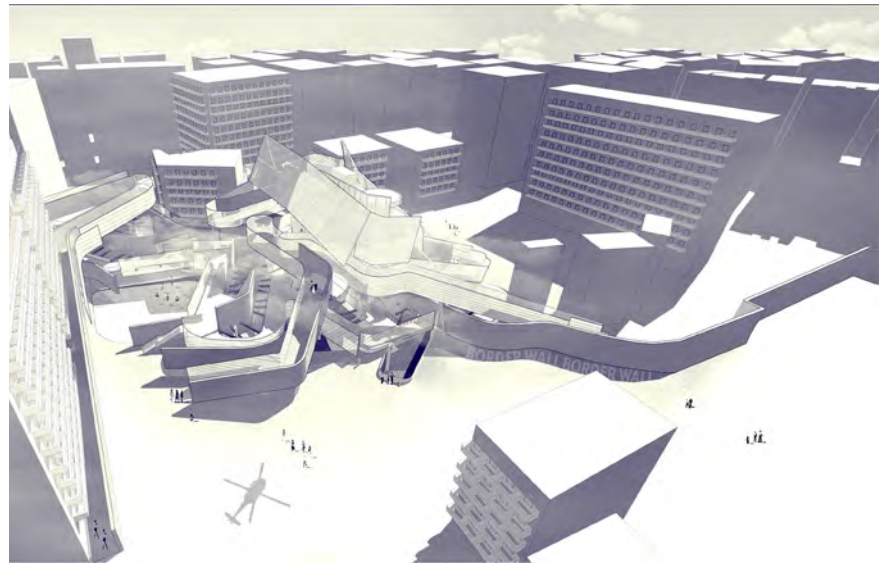
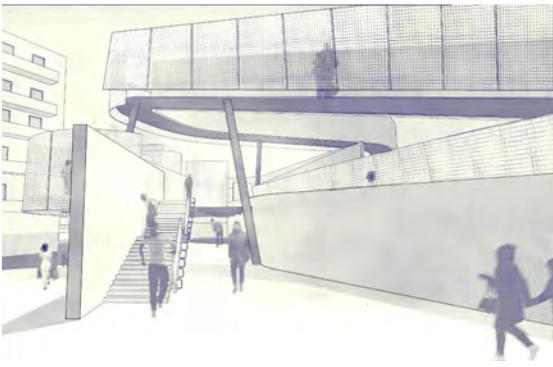
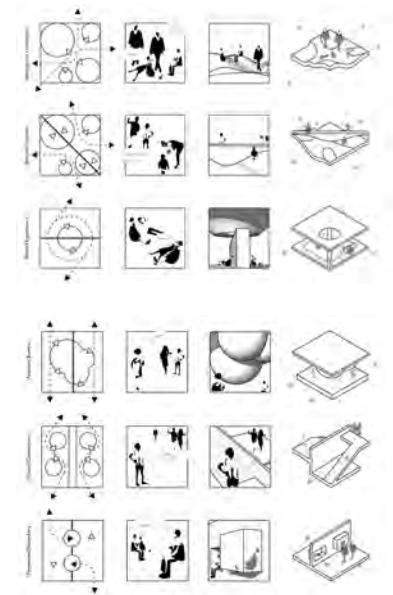
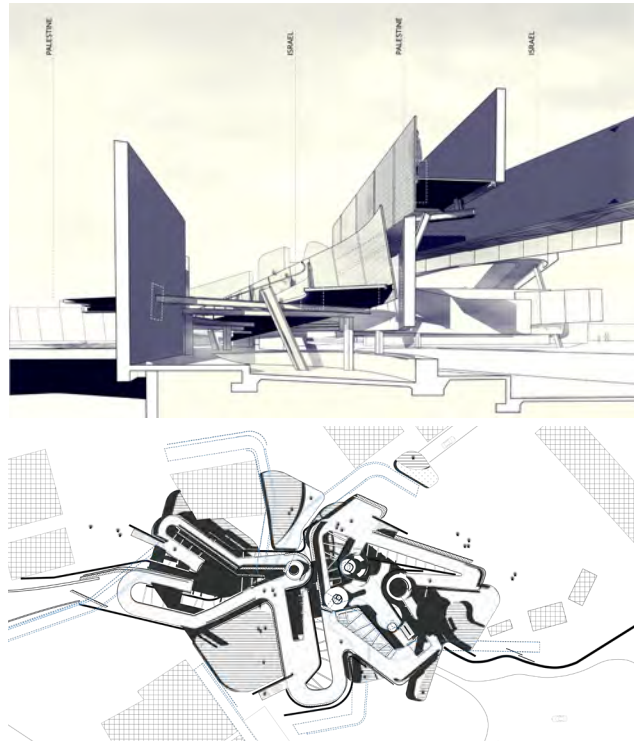


Lena Vogler | Work Samples

2015-2020

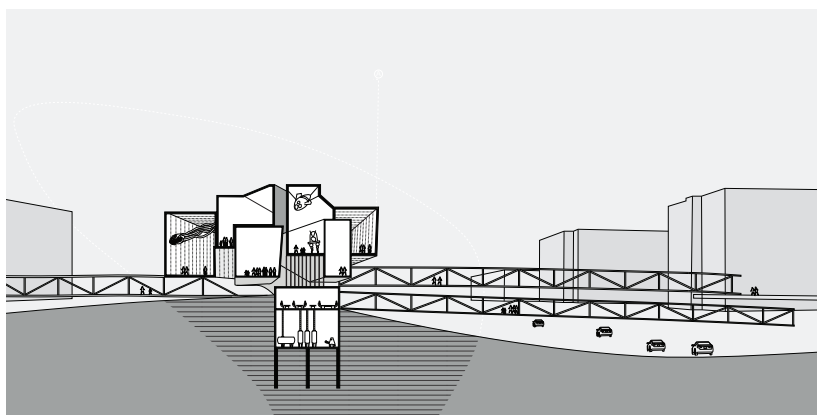
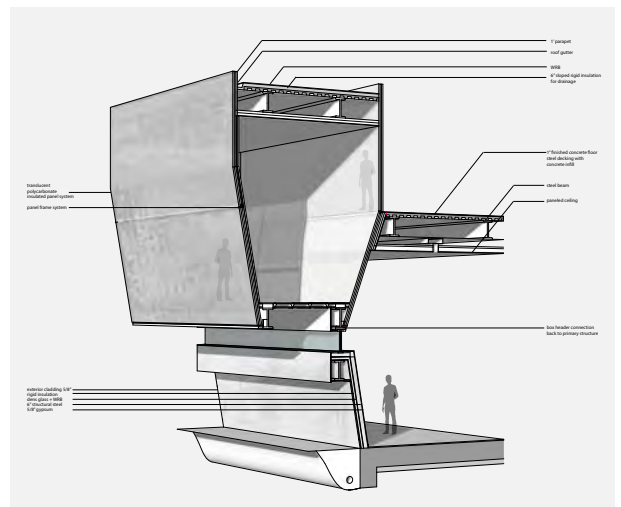
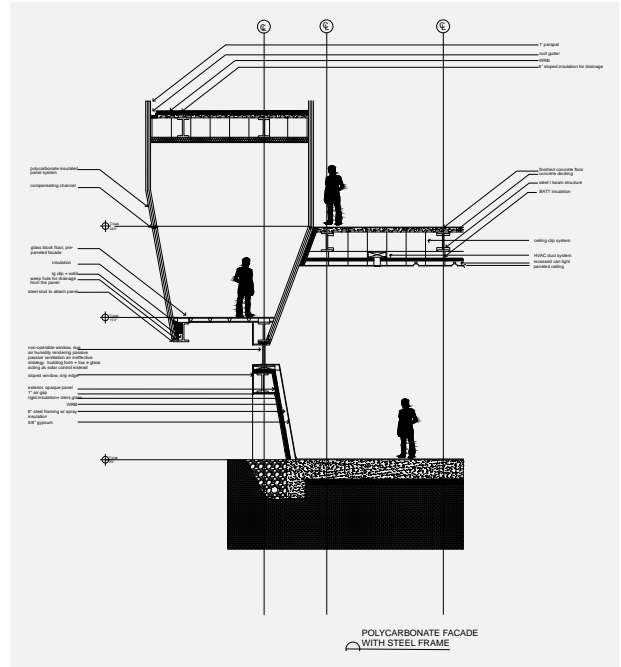
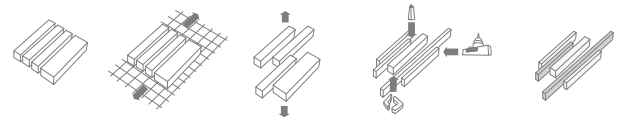
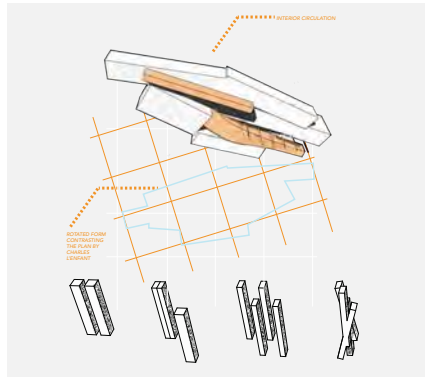
Senior Thesis

The reinforced concrete wall operates as an apparatus, dividing and isolating those on either side. Subverting the poche of the wall to accommodate virtualized experiences which afford intrigue, curiosity, and desire rather than division and isolation is one application of a larger argument that through the manifestation of these new realities, architecture is able to make cultural differences between people irrelevant through collectively shared experience.



MOSF

In a response to Charles L'Efant's original plan envisioned for the city of Washington DC, the building extends pedestrian access through DC's city fabric realizing an integrated future for the Washington mall.



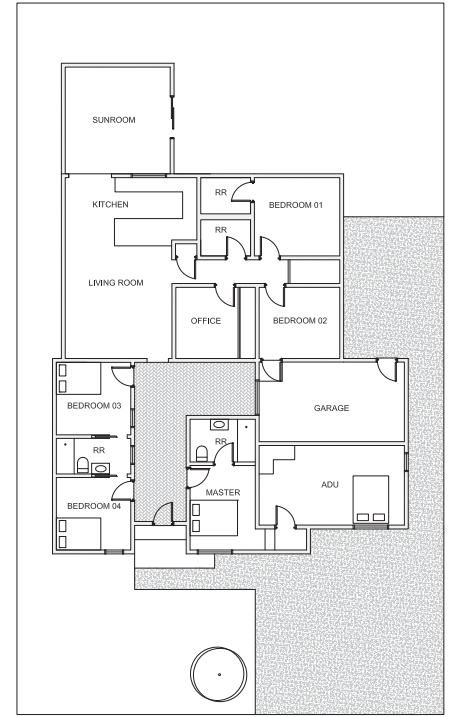
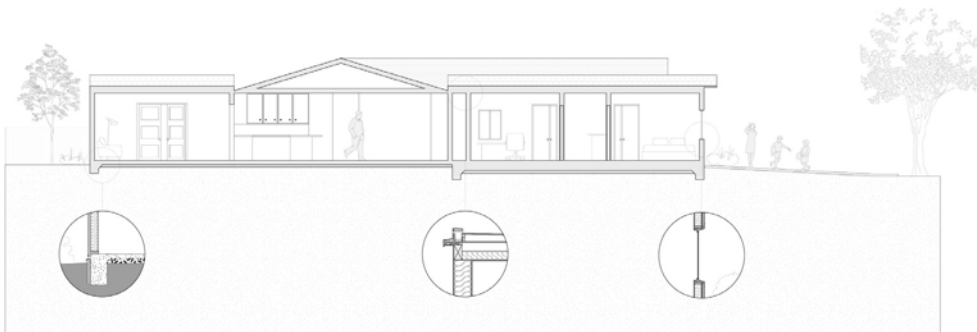
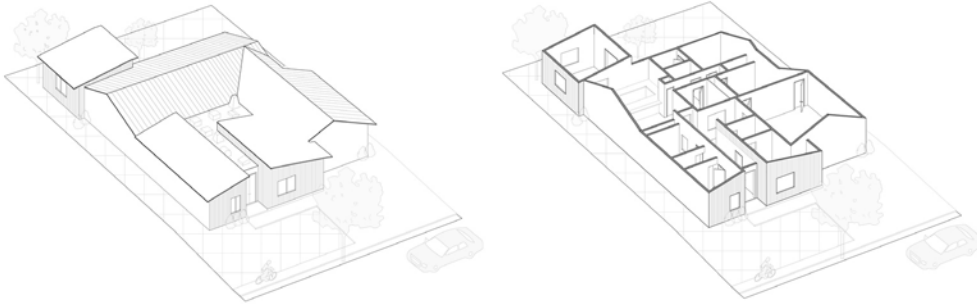
Gehry Partners Model

During my first internship at Gehry Partners I worked on the model for the Philadelphia Museum of Art Renovation which was later displayed at the LACMA exhibit honoring Frank Gehry's work. I worked on the Facebook Campus Expansion model during my second summer.



Westminster Addition

An in-progress project that is adding an additional two bedrooms and master suite for a father of two who needs space for his growing family. The addition also adds a sun room adjacent to the current living space for an indoor-outdoor fluency.

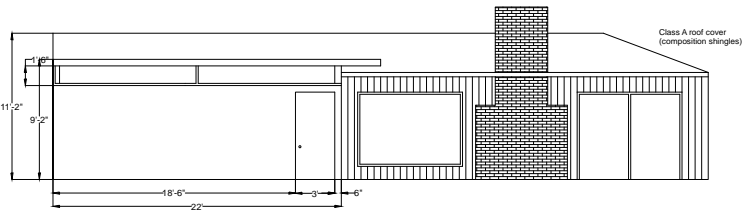
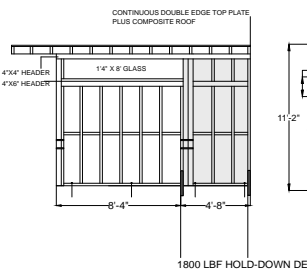
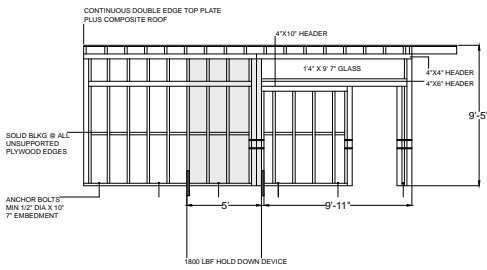
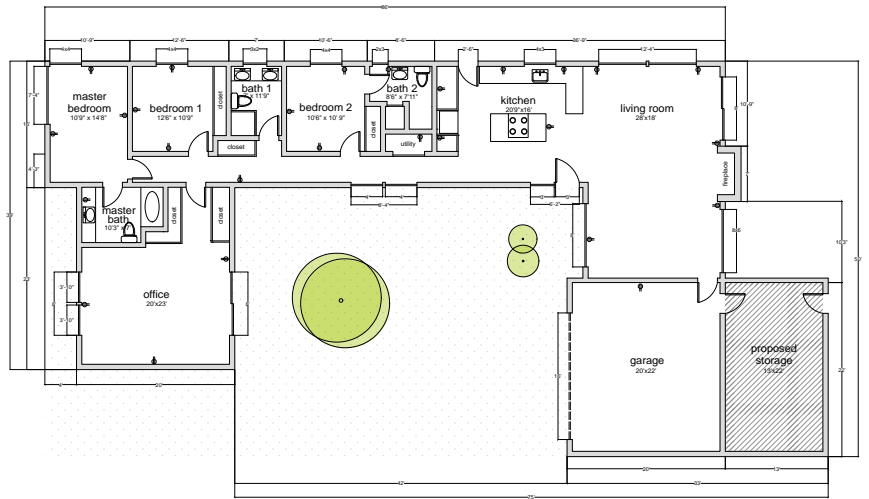
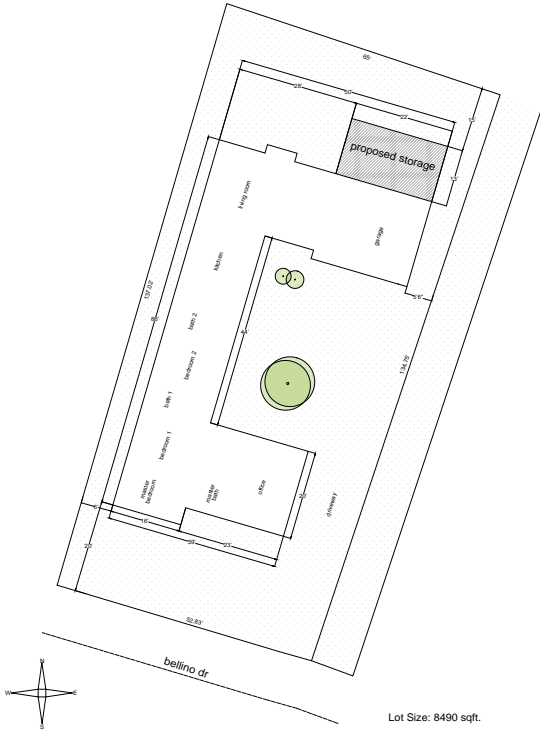


PROPOSED PLAN



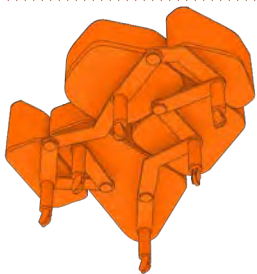
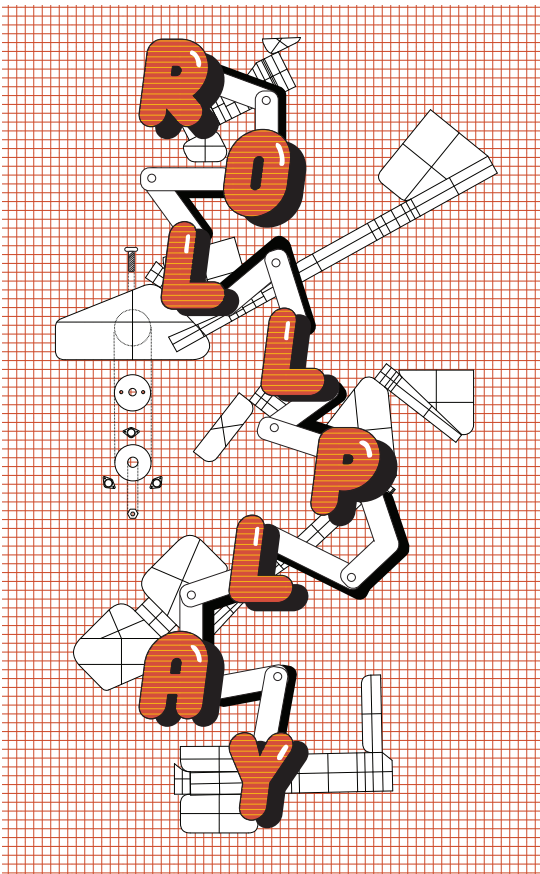
House in LA

Updated a residential home built in the early 1950's. Redesigned circulation throughout the residence, updated the kitchen, and added a recording studio in the back of the home.

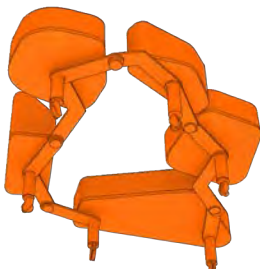


Rollplay

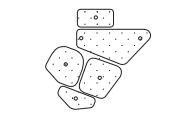
Rollplay asks the user to creatively interpret how the elements of the couch can be deployed into various ergonomic topographies. The openness regarding the qualities and characteristics of the seat asks the user to be the player of an independently interpreted act of lounging.



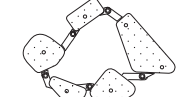
Closed Configuration



Closed Configuration



Configuration 01



Configuration 02



Configuration 03



Configuration 04