

Shorelines

A Publication of the Lauderdale Lakes Improvement Association (LLIA)

WWW.LLIA.ORG

The opinions expressed herein are those of the authors and are not necessarily those of the L.L.I.A.



May 2010 / Volume 33 – No. 2

MESSAGE FROM THE LLIA PRESIDENT

Dear Lauderdale Neighbors,

Spring has arrived and the 2010 boating, sailing, fishing, kayaking and swimming season is beginning. After the cold winter months with lots of snow, the ice went out on Mill Lake on March 20 followed by Middle and Green Lakes on March 25th. With many warm days in April the lake temperature has continued to rise and soon our lake will have lots of activity every weekend. I hope you have the opportunity to enjoy some spring days on the lake.

The LLIA Annual Meeting is scheduled for June 12, 2010 at Lutherdale Chapel. Come at 9:00 AM and enjoy complimentary breakfast snacks and a social period. Our formal program begins at 9:45 AM with brief reports from the Association Officers and Directors. Mark your calendar now and plan to attend your annual Association event.

This is the second of four Shorelines the Association will publish this year. Once again you will find several very interesting articles related to Lauderdale Lakes and the Town of LaGrange. Earlier I mentioned the Ice Out. Dave DeAngelis has a most interesting article on Water Quality and Ice Out on page 4. Remember the “The Lake Has Sprung a Leak” article by Peter Van Kampen? Peter gives us an update beginning on page 8. Thankfully the Town and Lake District were able to stop the leak last fall, but more needs to be completed this summer. Audrey Green’s article on

Page 2 tells us about the Walworth County effort to control and prevent aquatic invasive species. The Lake District in cooperation with the Town is supporting this effort by hiring Floyd Pochowski to monitor the three Lauderdale and one Pleasant Lake Public Boat Launch Ramps. Floyd will focus on inspection and education to assure all boats and trailers are kept clean and invasive species are not entering our lakes.

Two additional events that you will want to add to your calendar are: The Children’s Fish Jamboree July 17th and the Annual Lauderdale-LaGrange Fire Department Steak Fry August 14. Both will be held at

Events that you will want to add to your calendar are:

- LLIA Annual Meeting is scheduled for June 12, 2010 at Lutherdale Chapel. Come at 9:00 AM ,**
- The Children’s Fish Jamboree July 17th**
- Annual Lauderdale-LaGrange Fire Department Steak Fry August 14.**

The Landings restaurant. See more details on pages 3 and 7.

The Sailing Club will have another great year with many races. See the article on page 8 if you wish to join in the festivities. Contact them even if you do not sail, but would like to learn and they will assist you. The History article on page 7 by Katherine Ingle Calkins will bring back memories too many that have enjoyed skiing on our lakes.

Articles Inside This Issue:

	<u>Page</u>
Aquatic Evasive Species	2
Lauderdale Lakes Area Topics	2
Water Quality Report	4
LLIA Web Site	5
Water Safety Patrol Report	5
Kettle Moraine Land Trust	6
Fish Committee Report	7
Goose Egg Oiling	7
History Article	7
Sailing Club Report	8
Lake Management Topics	8
Lake Side LL Signs	9
Youth Fishing Club	9
Water Safety Tid Bits	9

Water Safety is of paramount importance to all of us. The Water Safety Patrol will be active by the time you receive this

Shorelines. The Wisconsin DNR has revised rules for boaters. Nestor tells us about the rules and the two upcoming boating safety classes scheduled in June in the article beginning on page 5.

Remember to visit KMLT Island Woods this summer. You may enter at the trail head at the east end of Oak Park Drive and walk into the woods on the trail. Also visit the scenic kettle overlook and marker about half way up Oak Park Drive on your left.

Membership is important for our Association to continue protecting and improving Lauderdale Lakes. Please invite your neighbors to become LLIA members. And I thank each of you for your continued LLIA membership. I look forward to greeting each of you at the Annual meeting June 12, and wish all a wonderful summer on the Lakes.

Don Henderson

THE WALWORTH COUNTY AQUATIC INVASIVE SPECIES CONTROL AND PREVEN- TION PROGRAM 2010 – 2012

**By Audrey Greene, Lake Spe-
cialist**

As many of you are aware, I have been the Lake Specialist with Walworth County since 2001. However, since my position is partially funded through grants, my particular focus on lake protection activities has changed over time. Between January 2001 and December 2007 I was able to provide education and information on a large range of lake related protection issues, such as shoreline restoration, erosion control, watershed management and others. In 2008, we received a new grant which focused on aquatic invasive species control and prevention. Aquatic invasive species are a huge threat to all of our Wisconsin lakes and while we have made a lot of progress towards educating lake users, there is still work to be done. For that reason, in anticipation of the existing grant ending, we applied for a new aquatic invasive species grant last summer.

As of January 2010, I began implementing our new grant, the Walworth County Aquatic Invasive Species Control and Prevention Program 2010 – 2012. Once again, education is a main focus, so I plan to provide workshops and presentations about aquatic invasive species to lake groups, landscapers, boater safety classes, school groups and basically anyone I can get to sit still and listen. These presentations can be anything from a half hour brief overview all the way to a three hour clean boats, clean waters training. If you are reading this and thinking that you would be interested in learning more about aquatic invasive species, how they affect your lake and how to prevent them, please give me a call. If you are concerned because you don't know how many other people you can get to attend, don't worry, I am perfectly happy talking to any size gathering.

Aquatic invasive species are often introduced to lakes by boaters and anglers. For that reason, I will also be spending 200 hours every summer doing Clean Boats, Clean Waters watercraft inspections myself at various boat launches in Walworth County and throughout

the Southeast Fox River Basin. This will allow me to educate boaters about the important but very simple prevention steps they need to take when boating. I will also be working with launch managers to come up with a few inexpensive changes that will make it easier for boaters to prevent the spread of aquatic invasive species. In order to assist boaters that wish to wash their boats and trailers before going to a different lake, I will be working on a project to locate all car washes that can accommodate boats so that we can help launches provide that information to boaters. If you know of any car washes where a person can wash their boat and trailer please let me know. Of course aquatic invasive species are spread in other ways as well, such as through gardening, aquarium enthusiasts and by the improper dispose of bait. So, I will be talking to bait dealers, aquarium suppliers, and nurseries to educate them and their customers about how they can prevent the spread of aquatic invasive species.

There are several other goals that I will be working on during the next three years, including sampling smaller lakes to test for zebra mussels and spiny waterfleas. We of course hope that no new lakes will be found with either but it is better to know so that we can work to prevent spreading them to other lakes. I will be working on a template that lake groups can use to produce an aquatic plant management plan for their own lake. When that template is complete it will be made available on the Walworth County website.

It will be a very busy 3 years, but while Walworth County currently has five aquatic invasive species, the Great Lakes have over 185. Plus there are others, such as Yellow Floating Heart that is found south of Wisconsin. I believe that it is very important to do everything possible to make sure that Walworth County lakes never see a sixth aquatic invasive species. If you are interested in more information about aquatic invasive species, please feel free to contact me by phone 262- 741- 7902 or email agreen@co.walworth.wi.us.

On a final note, please understand that even though I am no longer able to make site visits to assist with your erosion issues, assist with the design of a shoreline native buffer, or provide the educational

presentations about watershed management or other lake best management practices, I will still do my best to find resources to assist you if you contact me.

LAUDERDALE LAKES AREA TOPICS

By Don Henderson

2010 Town of LaGrange Election

The Town Board Chairman and First Side Supervisor were positions up for election in 2010. Elections were held the first Tuesday in April, 2008. Candidates elected to the Town Board serve two year terms of office. Frank Taylor was re-elected Town Chairman and Dan Wilson was elected First Side Supervisor. Both ran unopposed.

Dredging next to town boat house

The lake water depth has become so shallow in the bay in front of the Town of LaGrange Boat House that the Water Safety Patrol boat and the Lauderdale-LaGrange Fire Department rescue boat cannot navigate. The boats must be manually dragged through the mud to get them in and out of the boat house. In addition they cannot reach the Town dock that is designed to transfer a patient from the rescue boat to an ambulance. Probably some of you have experienced similar problems docking your boat at the Landing Restaurant piers.

The Town developed a plan to have the Bay dredged, and neighboring owners on either side have joined in the plan. The proposed dredging plan has been reviewed with both Walworth County Land Use Planning staff and the Wisconsin Department of Natural Resources Water Management Specialists. Applications for Dredging Permits have been prepared, and they are in the final approval process.

Dredging will be done by Inland Dredging using two long reach Excavators. The excavator will remain on the shore edge with the boom extending some 40 feet out over the water. The spoils (material removed from the lake bottom) will be loaded on dump trucks and transported to the Don West Farm on Territorial Road. Approximately one acre of land has been identified to spread the spoils over.

(Continued on page 3)

(Continued from page 2)

The Dredging application includes the area in front of the Town Boat House/Park property, the area where The Landing Restaurant piers are located and the area just west of the Town boat house owned by a homeowner association. All will be participating in the cost of dredging. When you visit this area you will see that the piers have been removed to accommodate the dredging. The Town expects to receive final permit approval in May. The Dredging Contractor, Inland Dredge will then begin dredging which will take approximately one week of work.

Garbage/Recycling Bins

John's Disposal picks up garbage every Monday for most Lake Homes, and recycling every other week. The Town contracts for this service, and the Town Board requests the containers are moved back off the road side that evening. Probably some of you are only at the Lake on weekends. Please ask a neighbor that stays at the lake all week to kindly move your containers back next to your garage or house each Monday evening.

Also some containers are being placed on the Town Roads for pickup versus at the end of your driveway. Please place the containers at the end of your driveway next to the road and not on the road. Most of the roads around the lake are narrow and the full width is needed for two cars to meet and pass.

Town of LaGrange compost site

The Town Compost Site is available from April-October on weekends for disposal of leaves, branches, and yard grass clippings on Saturdays from 10 AM - 3 PM. Please note that old lumber, concrete blocks and bricks, broken up concrete and old tires are not accepted.

The Town Compost Site is located 2.3 miles west of the intersection of State Highway 12 and County Road H in the Town of La Grange. Turn right onto Sherwood Forest Road at the Ice Age Trail location. Once on Sherwood Forest Road proceed to the town compost entrance on the north side of the road

For large loads and special arrangements for other times, call 495-8822. Please remember to remove all plastic bags or other containers when leaving compost material at the drop-off site.

Lauderdale-LaGrange Fire Department

- Annual firemen's dance raised money for new turn out equipment

The Lauderdale-LaGrange Fire Department's annual dance was held on Saturday, April 10, 2010. This Fund Raising Project resulted in net contributions of \$11,000. The money will be added to the fund to purchase new turn out equipment. All the Fire Fighters extend their appreciation to the community for supporting this Fund Raising Dance and Project.

Annual Fire Department Steak Fry is planned for Saturday August 14, 2009 at the Landing on the shore of Lauderdale Lakes - mark your calendar now!

**ANNUAL FIRE DEPARTMENT
STEAK FRY
IS PLANNED FOR SATURDAY
AUGUST 14, 2009
AT THE LANDING ON THE
SHORE OF LAUDERDALE LAKES
- MARK YOUR CALENDAR
NOW!**

- Are you prepared for a fire????

- Fire is the nation's #1 disaster. Each year, fire kills more Americans than all natural disasters combined and at least 80% of all fire deaths occur in residences. Cooking is the primary cause of house fires and fire injuries, followed by heating fires. Careless smoking is the leading cause of fire deaths. More than 30% of the fires that kill young children are started by children playing with fire. Many fires and deaths could be prevented by taking some simple precautions.

- A Working Smoke Alarm Saves Lives Whether you rent an apartment or own a home, an inexpensive smoke detector is a must. Approximately 90% of all

CALENDAR OF EVENTS

2010

<u>DATE</u>	<u>EVENT</u>
6-5	KMLT Annual Meeting
6-12	LLIA Annual Membership Mtg
6-12	Boating Safety Course
6-26	Boating Safety Course
7-3	Fourth of July Fire Works
7-17	Children's Fish Jamboree
8-14	Fire Dept. Steak Fry
8-14	LLIA Directors Mtg.

homes in the U.S. have at least one smoke alarm. However, an alarm must be properly maintained in order to work.

An estimated 40% of residential fires and three-fifths of residential fatalities occur in homes with non-functioning alarms. Follow these safety recommendations:

- Install smoke detectors in each level of your home, especially near bedrooms.
- Test smoke detectors this spring as you return to your lake home and regularly in all homes and replace any weak batteries immediately.
- Smoke detectors become less sensitive with age.
- Replace your smoke alarm every ten years.
- Change the battery at least once a year. Even home homes with wired smoke detectors need to have the backup battery replaced annually.
- Never paint over a smoke detector!

• Make Your Home Fire Safe

- Inspect your home annually for potential fire hazards and correct them.
- Store flammable liquids and combustible materials in accordance with the manufacturer's safety guidelines and away from any heat source.
- Have wiring or electrical cords checked for bent, frayed or worn coverings.
- Follow all safety instructions when using a kerosene or LP heater or grill.
- Have a working fire extinguisher (ABC type for all fires) in key locations throughout your house, garage

(Continued on page 4)

(Continued from page 3)

and work shop. Know how to use them properly.

- Contact The Lauderdale-LaGrange Fire Dept. or your local chapter of the American Red Cross for other fire safety tips or a safety inspection.
- *Have an Escape Plan and "Don't try to fight the fire yourself."*
- Get out of the house; call 911 for help from a neighbor's phone or cell phone. Once you are out, stay out. Never enter a burning building.
- Have two escape routes out of each room. Consider escape ladders for sleeping areas on the second and third floor.
- Sleep with your bedroom door closed. This offers you extra minutes of protection from smoke and toxic fumes.
- In case of fire, drop to the floor and crawl or stay low close to the floor..
- Feel the door before you open it. If it's hot, find another way out.
- Agree upon a safe location away from the house where everyone will meet.
- Practice your escape plan. Conduct a home fire drill at least twice a year.
- Quiz your children about the plan every six months. "If disaster strikes, remain calm and put your plan into action

LAUDERDALE LAKES IMPROVEMENT ASSOCIATION WATER QUALITY REPORT By Dave DeAngelis

THE ICE HAS COME AND GONE!

The old saying "March comes in like a lion and goes out like a lamb" certainly rang true this year! Consistent above-average temperatures during mid-March melted the ice on Mill Lake, and with the help of some strong winds, eventually did the same on Middle and Green Lakes. The ice went out on Mill Lake on March 20th followed by Middle and Green Lakes on March 25th. At its peak this winter, the ice was fairly thick in most places (12+ inches in spots that I checked) and we had substantial snow cover that helped insulate the ice from the sunlight and occasional warm day. This explains why it took 18

consecutive days of daytime highs above freezing to thaw Mill Lake and 23 consecutive days of daytime highs above freezing to thaw Middle and Green Lakes. While it usually seems like the lakes are ice covered for an eternity, Green and Mill lakes were ice covered this past winter for only 90 days and Middle Lake was ice covered for 95 days.

A PEEK BACK IN TIME

A couple of weeks ago, Pete Spaulding gave me some historical data for our lakes including a summary of when the ice had gone out going back to 1941. Being an engineer, I did what any engineer worth his weight in pocket protectors would do – I loaded the data into an excel spread sheet and played with it for an hour or so. Here are some take-aways:

- The average date the ice goes out is March 26th (it went out March 25th this year).
- The earliest the ice has gone out was February 26th in 1998. This is the only time in 70 years that the ice has gone out (for good) in February.
- The latest the ice has gone out was April 17th, 1960.
- Over the past 70 years, the ice has gone out 6 times on March 20th. This has been the most common date for the ice to go out.
- March 28th and April 8th are the next most common dates for the

ice to go out (4 times each).

I loaded all of this stuff into a graph - here's what we got.....

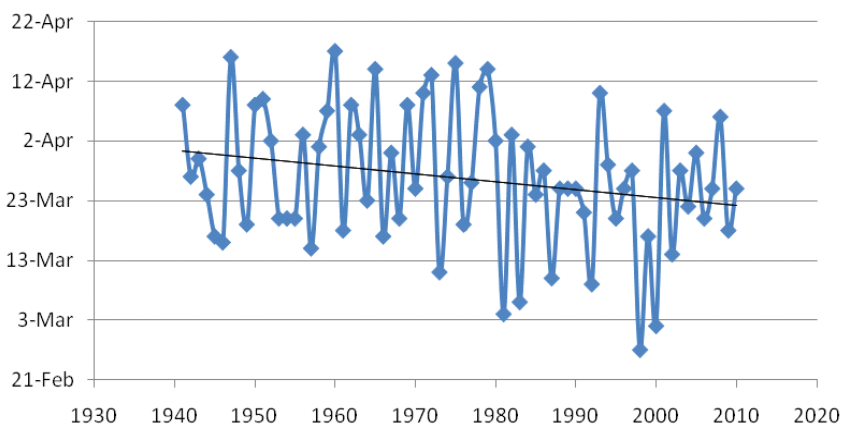
To the delight of Al Gore, the data clearly supports the notion that global warming may be alive and well at Lauderdale Lakes as our ice is going out earlier as the years pass. The annual lake thaw comes a full 7 days sooner than it did 70 years ago and is thawing (on average) 2.4 hours earlier each year.

There are multitudes of environmental studies that support the notion that we are having fewer days of snow cover, fewer days of ice on our lakes and warmer overall temperatures. One study from the UW-Madison Nelson Institute for Environmental Studies concluded that the annual average temperature (statewide) has risen by 1.1 °F over the past 56 years, and the average precipitation has increased by about 10 percent. One detail in this study I found particularly interesting was that the majority of the overall *increase* in temperature has occurred in *winter* and *spring* – summer and fall have actually cooled over this same period. If this trend is correct, don't look for a hot summer any time soon.

WATER TESTING FOR 2010 HAS BEGUN!

With the lakes open, water testing resumed on Saturday, March 27th with a mostly overcast sky, brisk wind and lots of layers of clothes. At the time this article was written, two sets of data were collected for water clarity, and one set of data was collected for dissolved oxygen and tempera-

Ice Out By Year



(Continued from page 4)

ture. All results thus far are well within expected ranges.

WHAT IS WATER TESTING AND WHY DO IT?

My father-in-law asked these questions (I omitted his expletives) while “helping” Pete and I during the first testing on 3/27. While most my father-in-law’s “help” involved telling stories, smoking cigars and asking how soon we’d be done, it occurred to me that perhaps many folks on the lake don’t know much about the water testing program.

The “why do it?” is easy. By monitoring our lake water, we help property owners, fisherman, recreational users and the DNR to properly address water quality issues and make necessary changes to protect and/or improve water quality. There’s also an awareness aspect to this to make sure all of us understand how things like polluted run-off, fertilizers, etc. negatively affect our lakes.

For those of you unfamiliar with what we do, here’s a brief overview.

- The testing is done in one spot in each lake at the deepest point.
- Often times, this testing is done on a Wednesday or a Thursday when the lake is not busy and the sediment from the weekend traffic has had time to settle. Sunny and clear weather is preferred.
- The DNR uses satellite imagery from the Landsat 5 and Landsat 7 satellites to correlate water clarity data across the entire state, hence the desire for clear and sunny weather. They provide us with a schedule, and we try to do our testing close to the same day the satellite passes over.
- Water clarity (Secchi Disc) and surface temperature testing is done approximately twice per month. This is arguably the most important testing we do and is directly related to the satellite imagery data. All satellite images must be calibrated against on-the-ground readings (i.e. readings taken by folks like us). By monitoring our lakes, we are also

helping to monitor other lakes in the area that might not have a testing program in place.

- Oxygen and temperature are measured approximately once per month. Both are measured near the surface and then at 5 foot intervals until we reach the bottom of the lake. Usually there is a well-defined depth where the oxygen level and temperature drop significantly.
- Lastly, there is chemical testing done periodically for phosphorous and chlorophyll. These tests are performed using a test kit that is supplied by the DNR. The samples are prepared, packed in ice, and then shipped to the DNR where the actual analysis is performed.

The water testing results for Lauderdale Lakes are available for viewing on the Wisconsin DNR website. To access the data:

- Search dnr.wi.gov/org/water/swims
- On the SWIMS page, click “Citizen Lakes Monitoring Network”
- On the left side under “Monitoring Results”, click “Reports and Data”
- Select the county (Walworth).
- Find the lake you want to view, and select “Reports”
- Select the year (i.e. 2010)
- Click “Create Report”

Have a great spring and I’ll see you on the lake!

IMPROVEMENT ASSOCIATION WEB SITE

By John Antonicic

Once again I would like to address the Feedback feature on the web site. I have discovered that this feature is indeed working. It took me some time to figure out that the messages can be retrieved from the mailbox of our web site host.

I had originally tried to get these messages

directed to my own email account, but since then I have discovered there is quite a lot of spam that gets sent to the mailbox, and I have realized this is probably something I would not like to do anyway.

I have retrieved and responded to a few messages from users seeking information. Either way, if you use Feedback or my email I will try to respond accordingly. Below is a review of the Feedback procedure:

At the bottom of the home page under the picture is an area to make Comments, Corrections and Suggestions by clicking [HERE](#). By selecting [Feedback](#) from the dropdown menu and filling in the appropriate boxes, a message can be placed in the General Comments box and upon clicking the submit button your message will be sent to the mailbox and I will respond accordingly.

I have been trying to keep the Calendar up to date. Check it for meeting dates and other events on the lakes.

An order form for new LL Signs is available on the web site.

Directors meeting notes and the latest Shorelines publication are also available for viewing on the web site.

Visit our web site at WWW.LLIA.ORG. I can be emailed at: jantoncic@hotmail.com or telephone 630-964-0393.

WATER SAFETY PATROL 2010 by Nestor Dyhdalo

The Lauderdale Lakes Water Patrol is gearing up for another boating season. Believe it or not, this is the 10th anniversary season for the Lake Management’s involvement with the water patrol. The Town’s involvement goes back many more years. As of this writing, both patrol boats are in the water on Lauderdale Lakes with Pleasant Lake soon to follow.

The Water Patrol has just concluded its first of three boating safety classes. This first one was held at Lutherdale on

(Continued on page 6)

(Continued from page 5)

the weekend of April 24-25 with over 40 students registered for the class. There are two more classes coming up; the first on June 12-13 and the second on June 26-27, both to be held at the Town Hall. Hope to have friends up at the lake and plan on cruising around on your PWCs? Keep in mind that if your friends were born after Jan. 1, 1989 (21 years of age), they will need to take a DNR-sanctioned boating safety class in order to operate a PWC on Wisconsin Lakes. Call 262-882-2030 now to register.

And let's not forget those launch fees, mandated by the DNR. The launch fee is a daily fee for transient boaters; each daily launch requires an additional \$3 fee. A \$20 annual pass is available for frequent users of the launch ramps. Daily users are required to place the receipt on the dashboard of their parked vehicles. We ask lake home owners to keep the receipt on their boat. The revenue generated from the launch fee is used by the Town to maintain the launch ramps and to contribute to the funding of various lake-oriented projects like the Clean Boat/Clean Water initiative.

The non-emergency contact number for Ken Blanke, Chief of the Water Patrol, is 262-882-2030. The non-emergency number to the Water Patrol office is 262-742-4300. If no one is in the office, the call will automatically be routed to a pager or

the patrol boat. **PLEASE CALL 911 FOR ALL EMERGENCIES!**

We wish everyone a safe and fun-filled boating season.

KETTLE MORaine LAND TRUST (KMLT)
By Jerry Petersen

Maggie Zoellner, our new Program Manager, is now on-board and operating out of our new office in the Watson Retreat Center building at Lutherdale. This is the building off the NW corner of their large parking lot. The office is at the southern

end of the lower level. Since Maggie came on board March 1st, she has been very busy establishing contacts at the County, State, and other nearby lakes. Here at Lutherdale, we are strongly supporting our Lake District's effort to get County approval for the installation of boardwalks on their Don Jean Bay wetland for all their municipal services; including the ski shows. The District placed a Conservation Easement (recorded deed restriction) on the land in 2003, with the Land Trust responsible for enforcement. At this point, the District needs to provide added flora protection, since the activities on the wetland (Water Patrol, Weed Harvesting, and the Ski Shows) have grown since 2003.



KETTLE MORaine LAND TRUST (KMLT)

Yes, I'd like to contribute to the KMLT effort to protect our lakes. All contributions are tax deductible.

Name _____ (Permanent Phone) _____

Permanent Address Street _____

City, State, Zip _____

Lake Address Street _____

City, State, Zip _____

Pier # (e.g. LL#) _____ E-Mail _____

Matching funds requested _____

Amount of contribution _____

\$ _____

Please make check payable to:

Kettle Moraine Land Trust

Mail with this form to:

KMLT

P.O. Box 176

Contribution Category:

Environmental Leader (\$1000 and above) _____

Environmentalist (\$500 to \$999) _____

Guardian (\$250 to \$499) _____

Park Ranger (\$100 to \$249) _____

Naturalist (\$50 to \$99) _____

Conservationist (\$25 to \$49) _____

We, and the District, agree that boardwalks are the obvious answer, but it is unfortunately taking more time than it should to get the County to agree, and to issue the needed permit.

We are currently actively planning for our Annual Meeting which will be held at the Michael Fields Institute in East Troy on **Saturday, June 5th at 1:00 pm**. This is the same location where we met last summer. One highlight of the meeting will be our awarding a very valuable door prize. This year it will be another signed Owen Gromme print (18 by 24 inches) of San Hill Cranes (see thumbnail photo). Sand Hills normally lay two eggs, and give priority to raising their first hatched. That's one reason they aren't more numerous. Daron Bohn of the National Wildlife

(Continued on page 7)

(Continued from page 6)

Federation will address our meeting by describing land protection projects where their organization has teamed with other Land Trusts. We want to develop contacts with his and similar wildlife habitat protection organizations so that we can quickly team to capitalize on future local opportunities when they arise. We hope you will stay after the presentations for an ice cream social opportunity for one-on-one discussions with the speakers and our Board.

Our work with Delavan Lake Sanitary District is positioning us to better protect watershed around Lauderdale and other lakes in the County. As we found out a decade ago, surface runoff is the largest source of pollution entering Lauderdale. The retention basins installed by our Lake District in the Gladhurst subdivision address some of this source. As we are identify more surface runoff pollution abatement techniques, and more funding sources to implement them, we will be in a much better position to accomplish more here at Lauderdale. The challenge is to bring programs and funding to the land owners, so that they can be part of the solution at very little personal cost.

Please consider a generous donation using the below form. We need your support, and be sure not to miss our Annual Meeting on June 5th.

FISH COMMITTEE REPORT **By Greg Schindler** **& Jim Frenchy**

The annual LLIA Kid's Fish Jamboree is scheduled for July 17th at the Landings. Registration is \$5.00 and is from 8 AM. To 11 AM. This Jamboree is for children 16 yrs. and younger. This is a catch and release jamboree. Lunch and gifts will be handed out at noon to all who register by 11:00 AM. The Yacht Club and Conversancy will join the Fish Committee to make this jamboree memorable. The sheriff will have the DARE Program dog there and the Conversancy will have their nature exhibit. Ron Kilinski is coordinating the gifts for the participants and promises that

there will be plenty for all and a few surprises. We will also have the fishing gear flea market to raise funds for the stocking program. Flea market donated excess gear can be dropped off at the Sterlingworth lobby on weekends July 3 and 10. Call 262- 742 -3518 or 262- 742- 2083 for info.

We have requested our DNR permit and fish stocking will be in late September. We will need 4 boats and volunteers to release the fingerling.

**Kid's Fish Jamboree is scheduled for
July 17th at the Landings.
Registration is \$5.00 and is from
8 AM. To 11 AM**

Thanks to the generous donation of \$995 from those who have donated to a fund in the remembrance of Tim Walsh. In honoring the wishes of the family, the fund will be used for the stocking of Walleye this year.

The new Wisc. Act 55 absolutely prohibits boats and trailers with weeds or animals on equipment while traveling on highways. Police can issue tickets to vehicles with weeds hanging from boats and trailers. Remove all weeds before transporting your boats.

Wisc. Act 31 restricts motor boats to slow-no-wake within 100 ft. from the shoreline on all waters. Great for us fishermen.

GOOSE EGG OILING **APRIL 12, 2010** **By Floyd Pochowski**

At 1:00 PM this afternoon I went along with USDA Wild Life Biologist, Mike Jones and Dave Terrall. The USDA was hired by the Lake District to oil the goose eggs on their nests. We observed that the majority of the nesting geese were on the marshes in Middle Lake, Bubbling Springs and Don Jean Bay. Unfortunately all these nests we were not able to oil be-

cause the DNR would not allow this.

Apparently in the past, the DNR did not have a problem spraying eggs in marshes and wet lands but that has changed recently due to heavy lobbying by hunting groups. We observed approximately 40 nests in these 3 areas. Most of the geese have on an average of 4-6 eggs per nest.

We did oil a total of 4 nests; 2 were located on the small island next to Flag Island, 1 nest had 2 eggs and the other had 6 eggs. One nest was on Goose Island

which had 6 eggs and the other location was on the island near the Green Lake boat launch and that nest had 8 eggs.

The USDA guys said that eggs go thru 6 stages before they hatch. They test which stage the egg is in by placing the egg in the water

briefly. Stage 1 and 2, the egg will lay flat, and stage 3 the egg will lay straight up. Stages 4 thru 6, the eggs will lay on an angle. All of our nests were in the stage 3 on their part of development.

Mike Jones stated to me that young geese leave 1 pound of droppings per day, where mature geese leave 2 pounds of droppings per day.

LAUDERDALE LAKES **HISTORY ARTICLE** **By Kathryn Ingle Calkins**

"A Treasure" **Dianne Holum at Lauderdale**

Recently, the History Column received a copy of an article from the *Elkhorn Independent* newspaper that ran just after the Winter Olympics. The article remembered fondly Dianne Holum, an Olympian and National Speed-Skating Hall of Fame inductee who grew up spending her summers at Lauderdale. Ms. Holum, who now lives in Colorado, spoke by phone about her memories of the Lakes.

Born in Franklin Park, Ill. in 1951, Holum had cousins and good friends who lived year-round on Green Lake. So, when a house came up for sale on the bay surrounded by the properties LL 788-

(Continued on page 8)

(Continued from page 7)

868, Holum's parents bought it. She and her sisters began spending all summer living at Lauderdale, and Holum remembers those months fondly. "We had relatives and friends nearby. There was a mess of kids up there each year, and we roamed," from property to property. "It felt like our bay," she said.

Holum's father, Ed, had played semi-professional baseball prior to World War II, and he and his wife loved sports. Thus, Holum said, "Dad wanted to expose his kids to all kinds." On Lauderdale, it was water-skiing. Every afternoon, Holum said, one parent -- Mother on weekdays and Dad when he was there on weekends -- would ready the speedboat and take the girls out. "It was really, really fun," she said. "It was a family activity."

Looking back, Holum noted, she saw that water-skiing had actually been a very good form of strength training, especially for her upper body. "It's really good for your back and arms," she said.

Holum remembered participating in the annual ski show put on in front of the Sterlingworth Hotel. She and her sisters learned to make a pyramid, with Holum's youngest sister climbing to the shoulders of the other two (see photo).

According to the *Independent*, Holum, who had found a speed-skating club when her family moved to Northbrook, competed in the world championships in 1966 at age 14. In the 1968 Winter Olympics, she tied with two other Americans for the silver medal in the 500 meters. She won a bronze in the 1000 meters.

In the 1972 Games, Holum took the gold in the 1500 meters, setting a speed record, and the silver in the 3000 meters. Having competed in the world championship from 1966-1972 and won 15 medals, Holum switched her interest to coaching. She was coach of the 1976, 1980 and 1984 U.S. Olympic teams, whose stars included Eric and Beth Heiden of Madison, WI. She also coached 8 world teams that

won more than 100 medals and 13 titles. The National Speedskating

Museum & Hall of Fame has a list of Holum's accomplishments as well as several photos (www.nationalspeedskatingmuseum.org).

When she began training in earnest for the 1972 Games, Holum said, she spent more



At top is Patti Holum-Johnson, bottom left is Mary Holum-Maier and bottom right is Dianne Holum

time back in Northbrook than at Lauderdale. But she did come up to take breaks and ski. Other favorite memories of the Lakes include the mailboat, for which the sisters waited expectantly on the pier, and the serenity of Lauderdale on the weekdays. "It was so quiet during the week that we could swim across the lake and back without fear of speedboats," Holum said.

At the end of each summer, she recalled, "I would cry the whole way home in the car. . . . Lauderdale was a treasure." -- *Kathryn Ingle Calkins*

LAUDERDALE LAKES SAILING CLUB By Peter Van Kampen

One of the greatest pleasures of being

lucky enough to have a place on Lauderdale Lakes is waking up on Sunday morning, getting out on the water when few others are on the lake and sailing. It's quiet; it's intimate with the sights, smells, sounds and of course breezes that brush the Lakes. Of course that there are many ways to enjoy these same hours, canoeing, fishing, swimming, and kayaking as well as just sitting your deck with coffee and the paper. Our club sails the MC scow, a boat designed by the famous sailor Buddy Melges in Zenda Wisconsin. (just south of Lake Geneva) Scows were chosen because mid-western lakes surrounded by hills and trees tend to have winds that change direction almost constantly. Scows are designed to be able to be adjusted to these "fluky" winds. And that's the challenge of sailing. Not simply to be blown about by the fickle winds but to harness these winds to have the boat go where you want it to and to get around that race course faster than anyone. This different than buying a boat with the biggest engine, these scows are all the same, the only difference being the sailor. So we offer the serenity of a Sunday morning and the adrenalin pump-up of a good race. You are back at the dock by noon and are ready for the rest of what has begun as a great day. Check us out at www.lauderdalesailingclub.com

LAUDERDALE LAKES LAKE MANAGEMENT DISTRICT (LLLMD) TOPICS By Peter Van Kampen

Leak in the Lake:

Last fall quite by accident a resident discovered a vortex of water along the shore of the Sterlingworth Condo's. The Lake had sprung a leak. Water had found its way to some underground drains and was draining to Honey Creek just below the Dam. The Town Supervisors were notified and within hours the leak had been stopped. Now what to do. . . . The Town has had engineers studying the situation and has had discussions with the Condo Homeowners whose buildings have been built over this seemingly porous soil containing the collapsed drainage system that

(Continued on page 9)

(Continued from page 8)

runs from the low point by the Bay launch site to Honey Creek. All the parties recognize that some long term fix has to be instituted and the studies and discussions are continuing.

Highway 12:

Last year the South East Wisconsin Regional Planning Commission (SEWRPC) and the Walworth County Transportation Committee began discussions about widening Hwy 12 between Elkhorn and Whitewater by pass instead of following the long planned RED LINE ROUTE across the countryside. Meetings were held and petitions were signed by scores of residents and businesses along Hwy 12 in opposition to widening Hwy 12 and in favor of the RED LINE ROUTE. (Plans from the 1960's as well as current plans shown the cross country route as a bold red line, hence the name)

The last meeting of 2009 was attended by many proponents of the RED LINE ROUTE and we were told that the "Big Input" meeting would be in December. No meeting was scheduled or held until March of this year when the County and SEWRPC again presented the widening of Hwy 12 as an alternative to the RED LINE ROUTE. These people obviously have an agenda that chooses to ignore the input of the vast majority of people involved. Thousands of people would be negatively affected by the wider road and increase in traffic as opposed to very few on the RED LINE ROUTE. The safest way to build a road is a divided Hwy with two lanes in each direction. The alternative of widening Hwy 12 in its' existing location would become a very dangerous stretch of road bound to hurt many people over many years. If you would like to support the RED LINE ROUTE you may send us your email and we will put you on our email list. You may send it to: ml@elknet.net We will need all the support we can get because it is obvious that the persons to whom we have talked to several times and whom at the time we are talking seem to be listening and agreeing; have come back with another agenda each time. There is another group, not residing along either of the alternative routes, that is bringing pressure to widen Hwy 12. We need to see that the majority prevails.

LAUDERDALE LAKE SIDE SIGNS (LL address signs) By Jane Larsen



The Lauderdale Lakes Improvement Association is offering outdoor "Lake Side" outdoor address signs, custom made with your LL cottage address on it.

We've had a lot of inquiries regarding the "old style LL address signs" that were posted on the lake side years ago. Note, it is illegal to post the LL address signs on the street side of the address.

We found a company in Illinois that makes street and safety signs for municipalities around the country.

The reflective sign will be very visible from the lake, and a great use for identification as well as safety.

The sign size is 18" x 6" in size and constructed out of .080 thick commercial grade galvanized aluminum and 3M Engineer grade reflective red with white lettering with 2 pre-drilled holes.

Price: \$15.00 each

All signs must be ordered by **May 15th**.

Signs will be available for pick up at the Lauderdale Lakes Improvement Association Annual Membership Meeting on **June 12th** at Lutherdale Bible Camp on Hwy 12 between 10:00 AM and 12:00 PM

Please go to our web site www.LLIA.org for more information and an order form:

A sample of the new red lake side sign will be available at the Lauderdale Lakes Golf Club by mid March.

For any answers to further questions contact Jane Larsen at Lauderdale910@aol.com.

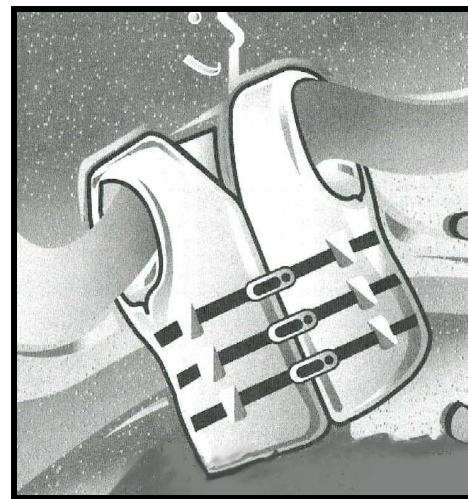
LAUDERDALE LAKES FISHING CLUB By Evan Potter

Hello, my name is Evan Potter and I am 14 years old. I am looking to start a Lauderdale Lakes fishing club. This club will include all ages. The activities that I would like to be included in this club will be things like fishing competitions, fishing instruction camps for those learning to fish, and an end of the year party. In this club, you will have the chance to meet new people and enjoy the fun and excitement of the sport of fishing. To join there may be a small fee that goes towards the awards for the fishing competitions and camps. If you would like to join this fun and enjoyable club, please contact me at 1-847-680-5145 or you may also email me at etpotter@comcast.net Thank You!

BOATING SAFETY TID BITS By Bud Vance

I was reading the Chicago Tribune a few weeks ago, and I came across an article by Peter Cameron that I thought was very timely and it had some great quotes and information so I thought I would pass them along.

"Just because people have a lot of money



to buy a boat, doesn't mean they know how to run a boat" (Bill McCaffrey).

Last year, 85 percent of all watercraft involved in mishaps were operated by people with no formal boating education, according to the IL Dept. of Natu-

(Continued on page 10)



Lauderdale Lakes Improvement Association
P.O. Box 542
Elkhorn, WI 53121

(Continued from page 9)

ral Resources. Also, of the reported boating related deaths in Illinois since 1993, almost all of the operators had skipped formal training.

On Lauderdale Lakes, we are getting an increased mingling of motorboats and slower man and wind powered vessels in congested areas and that combined with a lack of boating education can be a dangerous thing. Then if you mix in a little alcohol and no life jackets you can have a disaster in the making.

This does not mean that all is lost and the world is coming to an end and you can not have fun on the lake. Just be prepared, get educated and have your children educated and do the right thing. Here is a list of basic boating safety equipment:

- A lanyard cut-off switch that clips to the operator so that he or she gets ejected it will turn off the engine.
- One "readily accessible" and appropriate-sized life jacket per

person, including those towed or pulled.

- An effective muffler or under-water exhaust system
- A sound producing device, such as a whistle or air horn.
- A fire extinguisher
- For boats longer then 16 ft. a flotation device that can be thrown to a person in the water, such as a lifesavers ring.
- For at night, a bright white light and a lower combination light that shows green to starboard (right) and red to port (left).

Now let's go and have a safe and fun filled boating season and if anyone has influence over the weather a few nice days of sun and nice temps would be great.

Lauderdale Lakes Improvement Association Officers

Don Henderson, President, 262-742-4970
Ron Mueller, Vice President 847-635-5668
Herb Sharpless, Treasurer, 630-497-5152
Patricia Cady, Secretary, 262-742-4190
Floyd Pochowski, Executive Board, 262-742-3568
Bud Vance, Executive Board , 847-459-8127