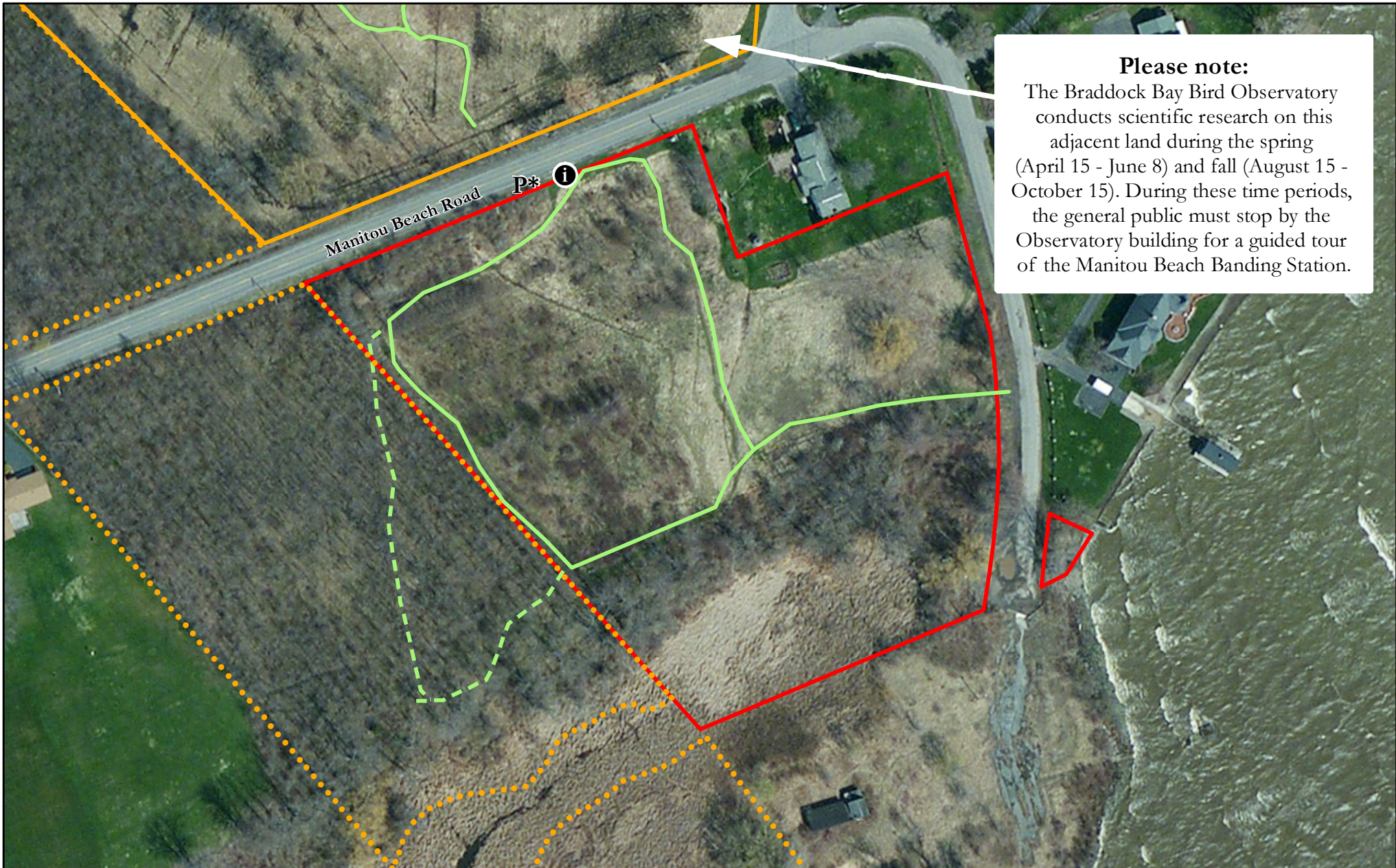


# Manitou Beach Preserve

5 acres | Manitou Beach Road | Greece, NY

## Please note:

The Braddock Bay Bird Observatory conducts scientific research on this adjacent land during the spring (April 15 - June 8) and fall (August 15 - October 15). During these time periods, the general public must stop by the Observatory building for a guided tour of the Manitou Beach Banding Station.



0 50 100 150  
Feet

\* Park at your own risk along Manitou Beach Road, near the informational kiosk.

— Hiking trail

- - - NYS DEC trail

**i** Kiosk



Boundary - Manitou Beach Banding Station

Boundary - Manitou Beach Preserve

Boundary - NYS DEC Property



[www.geneseelandtrust.org](http://www.geneseelandtrust.org)