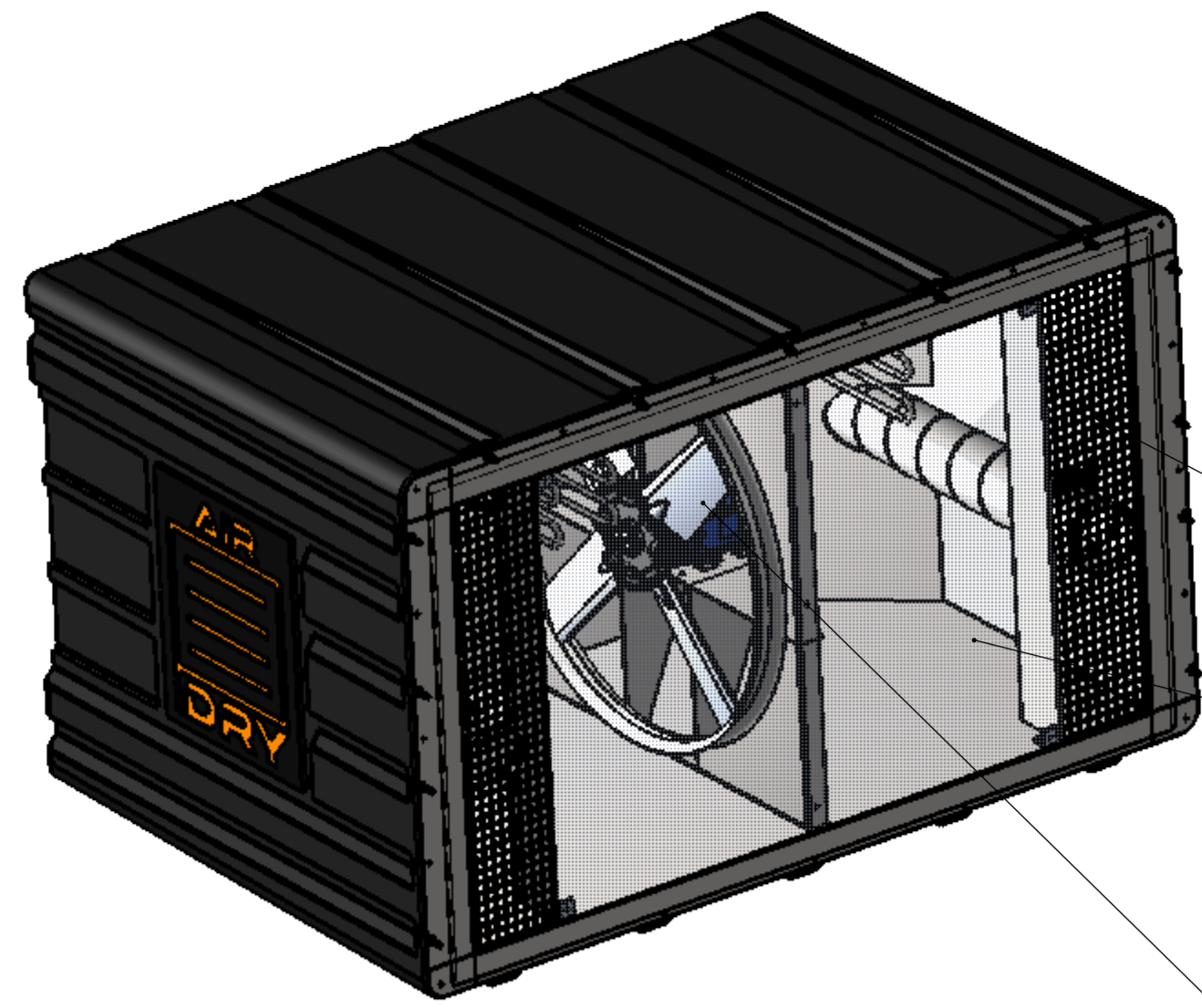
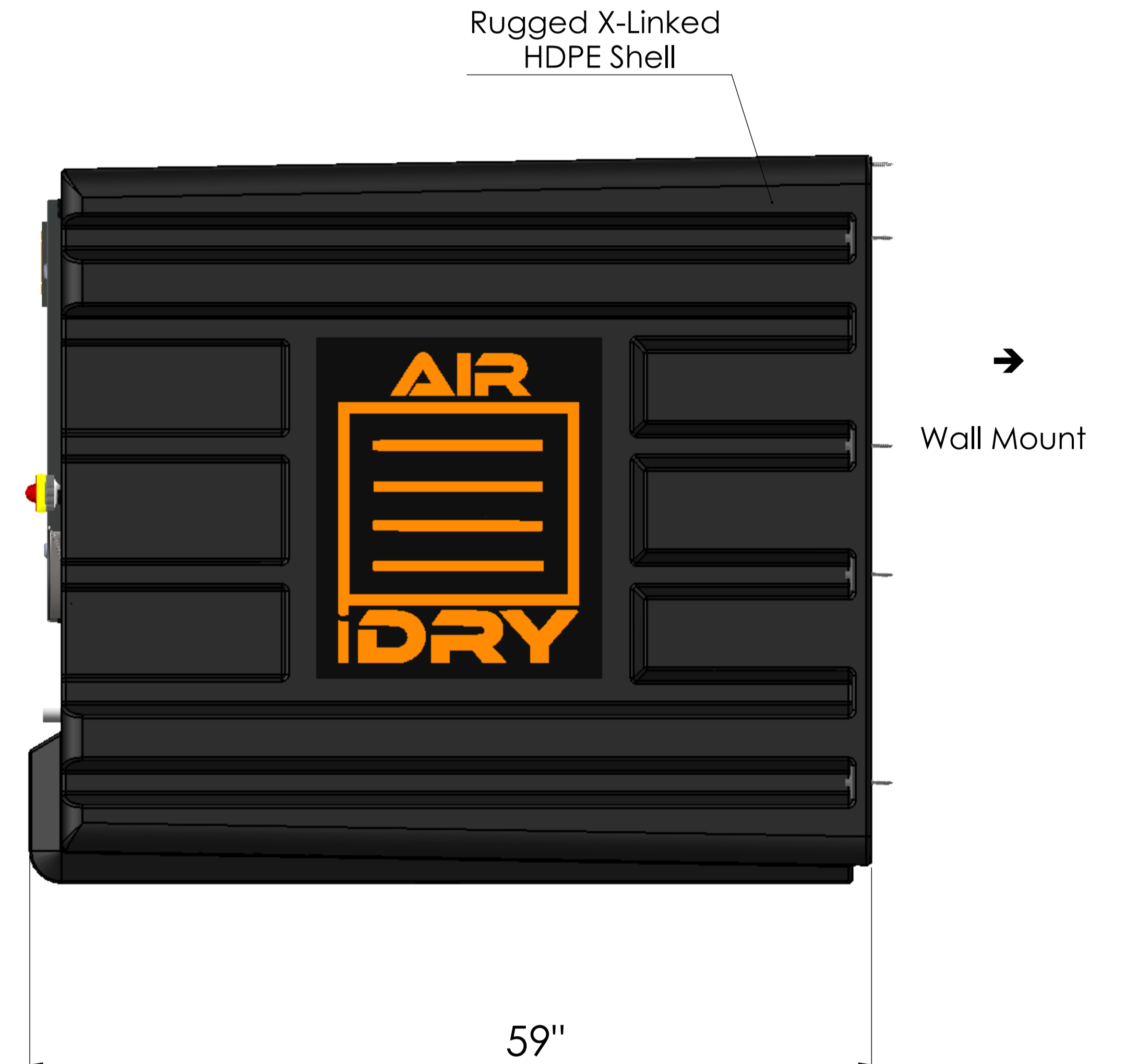
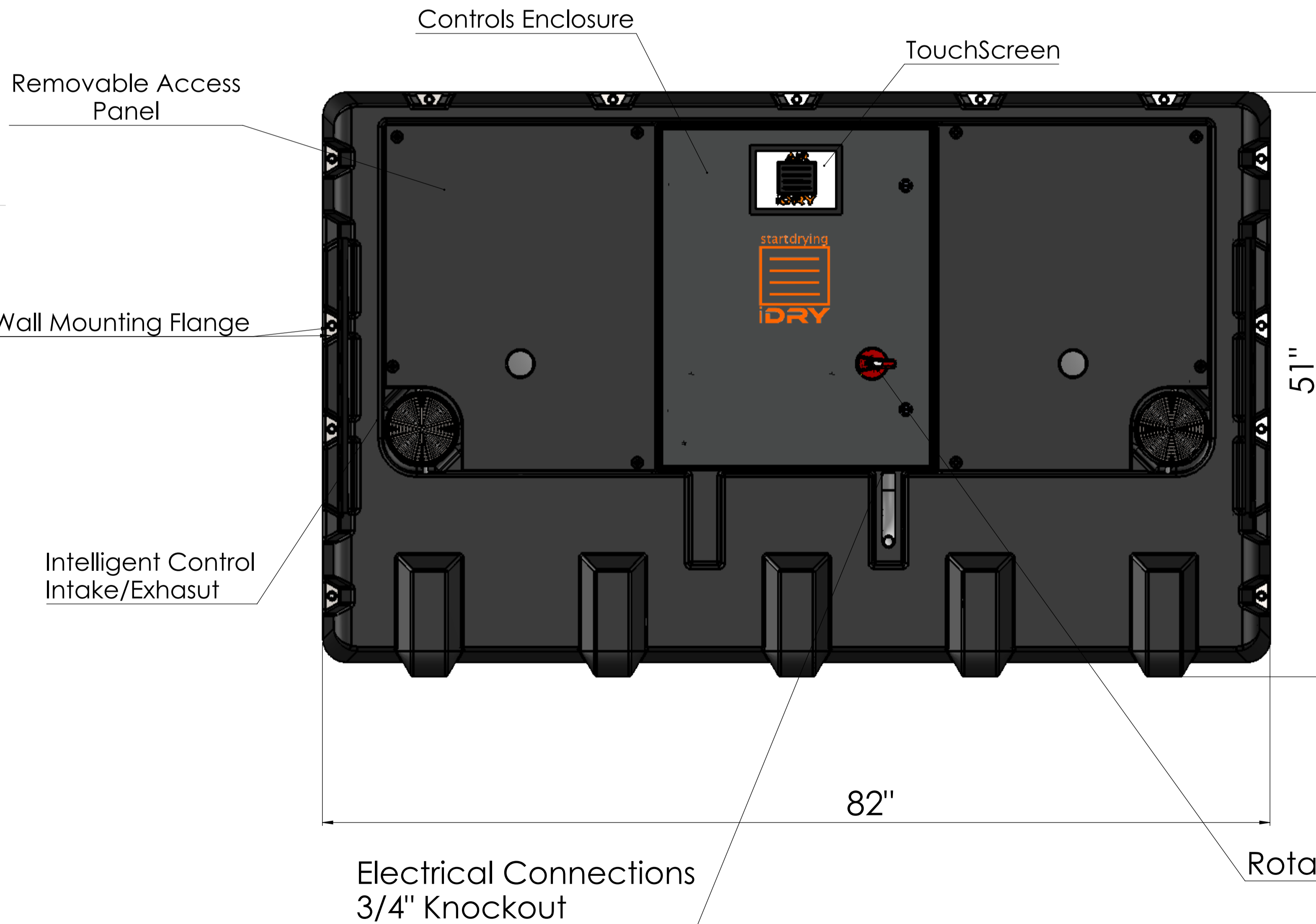
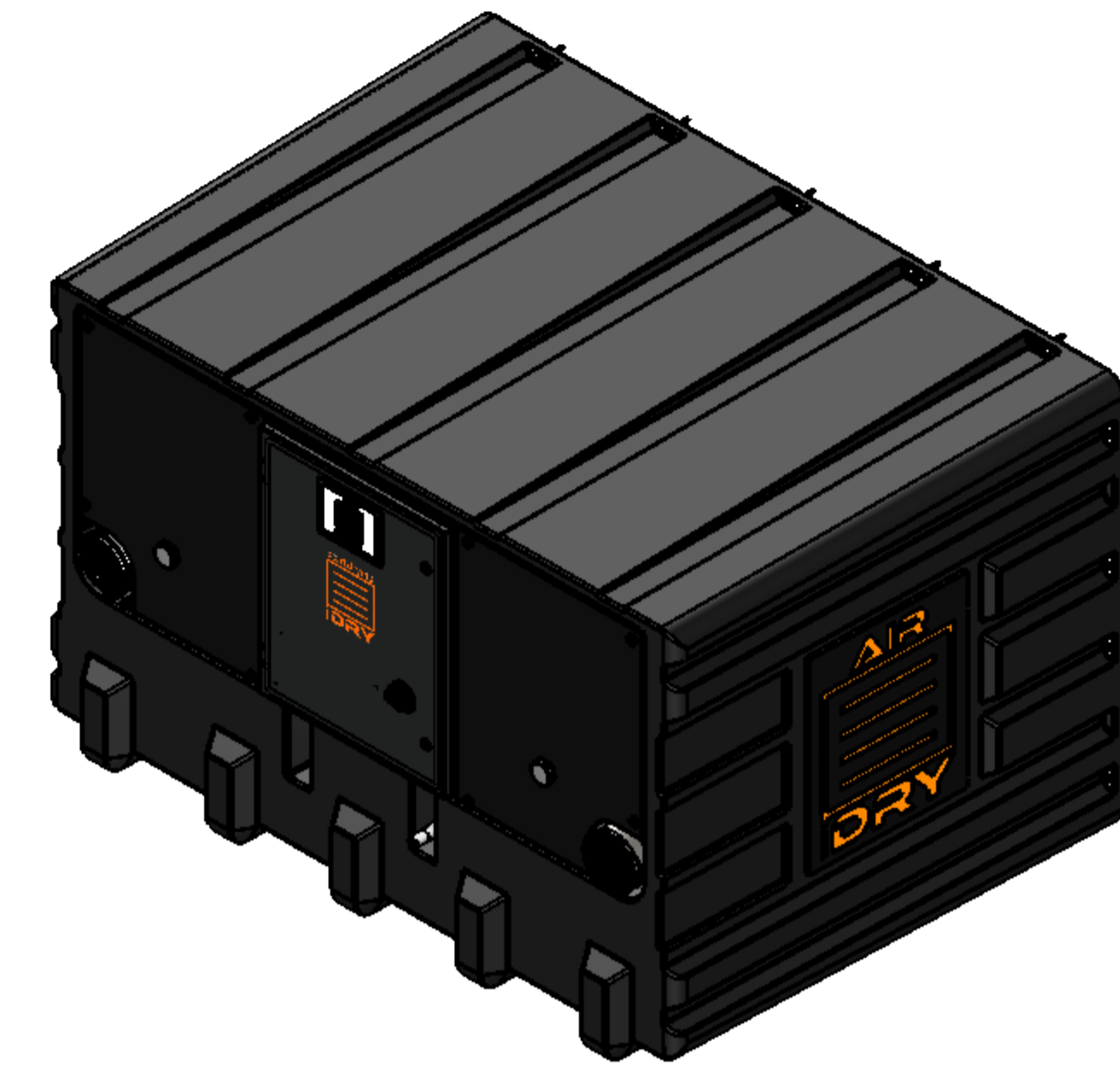


IDRY AIR



- Safety Grille
- Flow Divirter plate (shown Transparent)
- Reversible Variable Speed Circulation Fan Powered by Kiln Duty Motor

Electrical Capacity	208-240VAC, 1PH, 60 AMP
Variable Speed Fan	Up to 4000 Board Ft.
Heat Power	2HP Kiln Duty Motor
Max. Temp.	6kw
Weight	165F (66C)
Humidity Sensor	700lbs
Temperature Sensor	Capacitive
Controls	RTD
	PLC w/ HMI TouchScreen



Applies to Serial # and After:

FILENAME: m500 - Installation 00 - Air Module Overview

LAST SAVED Thursday, January 18, 2024 4:47:11 PM



iDRY Drying Systems

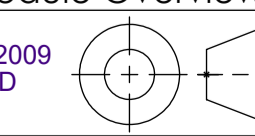
Green Mountain Mechanical Design, Inc
29 PITMAN RD BARRE, VT 05641
©2018 All Rights Reserved
CONFIDENTIAL

INTERPRET GEOMETRIC TOLERANCES PER ANSI Y14.5-2009 UNLESS OTHERWISE SPECIFIED DIMENSIONS ARE IN INCHES

UNLESS OTHERWISE SPECIFIED ALL UNTOLERANCED DIMENSIONS ARE BASIC.

MATERIAL: SEE NOTES

FINISH: SEE NOTES



DESCRIPTION: Preliminary Specifications

DWG BY: LT	CHK BY:	SIZE: A1	PART NUMBER: IDRY AIR	REV 1
MOD BY:	APR BY:	MASS:	SCALE: 1:1	SHT 1 OF 1