



Freight Mobility Strategic Investment Board

Washington Public Ports Association

November 15, 2017

Brian J. Ziegler, P.E.

Director

Four Things



- FMSIB Purpose
- Washington State Freight Advisory Committee (WAFAC) - Future Role?
- Studies: Complete and Underway
- Call for Projects

Mission Statement



“Improve and mitigate freight movement on strategic state corridors, grow jobs and the economy, and bolster Washington as a leader in international trade.”

- Advocate for strategic freight transportation projects that bring economic development and a return to the state;
- Focus on timely construction and operation of projects that support jobs;
- Leverage funding from public and private stakeholders;
- Create funding partnerships across modal and jurisdictional lines

FMSIB Members



<p>Dan Gatchet Dabob Bay Chair Citizen Member</p>	<p>Art Swannack Commissioner Whitman County Counties</p>	<p>Bob Watters Director of Business Development SSA Marine Marine Industry</p>
<p>Leonard Barnes Deputy Executive Director Port of Grays Harbor Ports</p>	<p>Matt Ewers VP, IEDS Trucking</p>	<p>Tom Trulove Mayor City of Cheney Cities</p>
<p>John Creighton Port Commissioner Port of Seattle Ports</p>	<p>Johann Hellman Dir., Government Affairs BNSF Railway Railroad</p>	<p>Pat Hulcey Deputy Mayor City of Fife Cities</p>
<p>Erik Hansen Senior Budget Asst. to the Governor Olympia</p>	<p>Vacant Counties</p>	<p>Roger Millar Secretary WSDOT</p>
	<p>Aaron Hunt* Director of Public Affairs Union Pacific *ex-officio</p>	

Funding Sources



\$29M per biennium:

- \$12M per biennium dedicated to freight
 - \$6M Freight Mobility Investment Account
 - \$6M Freight Mobility Multimodal Account

Uncodified:

- \$17M per biennium from Connecting Washington
 - \$8.5M Freight Mobility Investment Account
 - \$8.5M Freight Mobility Multimodal Account


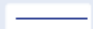
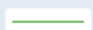
Completed FMSIB Projects



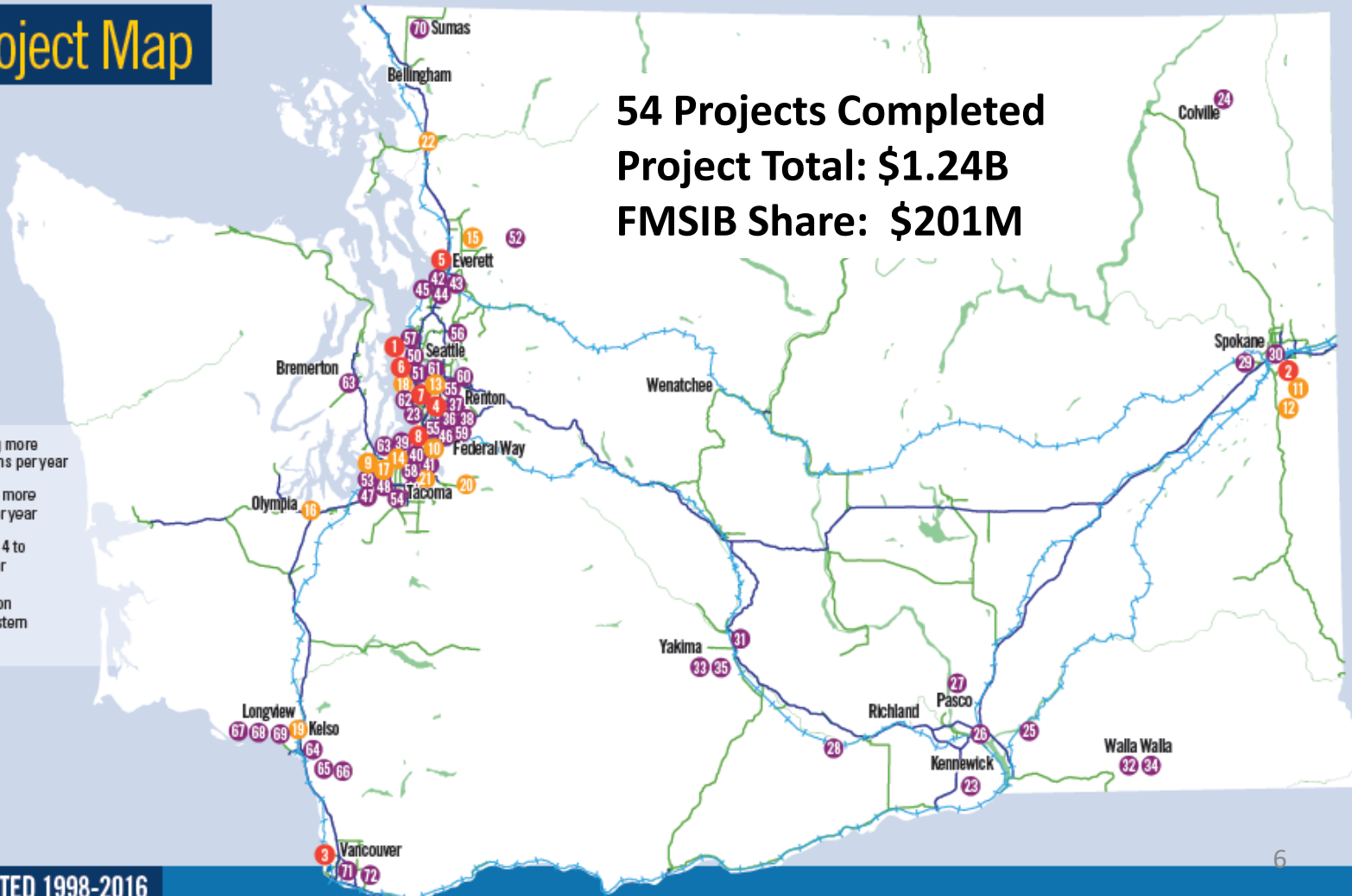
FMSIB Project Map

54 Projects Completed
Project Total: \$1.24B
FMSIB Share: \$201M

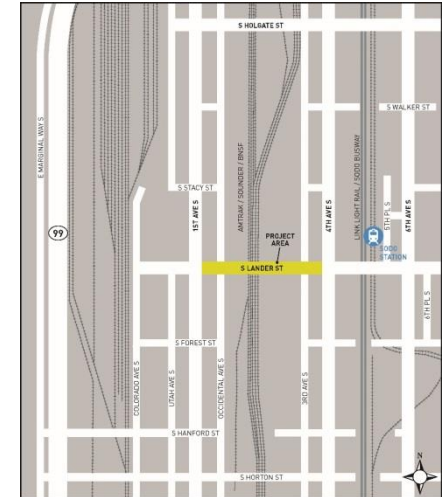
FREIGHT CORRIDORS

-  R-1 corridors: carrying more than 5 million gross tons per year
-  T-1 corridors: carrying more than 10 million tons per year
-  T-2 corridors: carrying 4 to 10 million tons per year

FMSIB balances its project selection between Eastern Washington, Western Washington, and Puget Sound.



South Lander Street Grade Separation



Location: City of Seattle, King County

Project Description: Will cross over BNSF mainline tracks between 1st Ave S and 4th Ave S., removing over 120 trains per day conflicts. in the heart of the Duwamish Manufacturing/Industrial Center (MIC), including the Port of Seattle, Seattle International Gateway (BNSF) Yards, Argo (UP) Yards and associated businesses.

Total Project Cost: \$140M

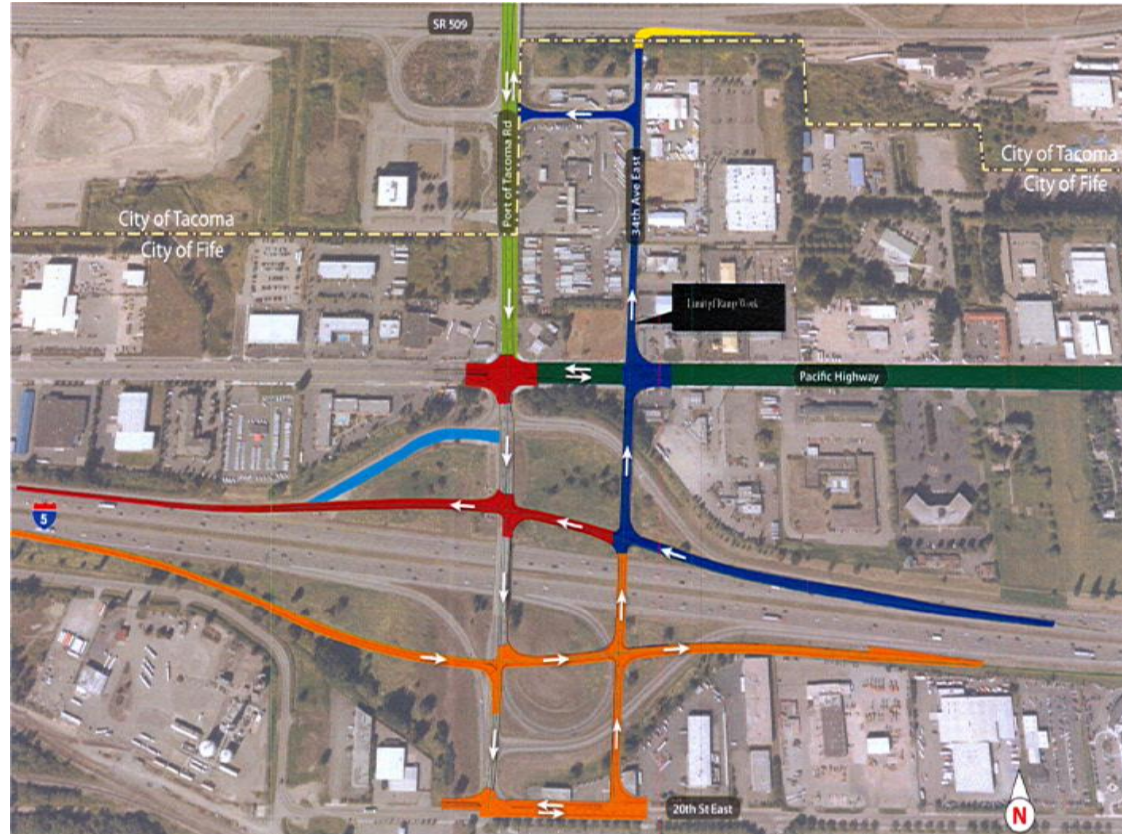
- FMSIB Share: \$8M
- Received \$45M in FASTLANE Grant Funding.
- One of the remaining “FAST” corridor projects

I-5, Port of Tacoma Rd Intersection

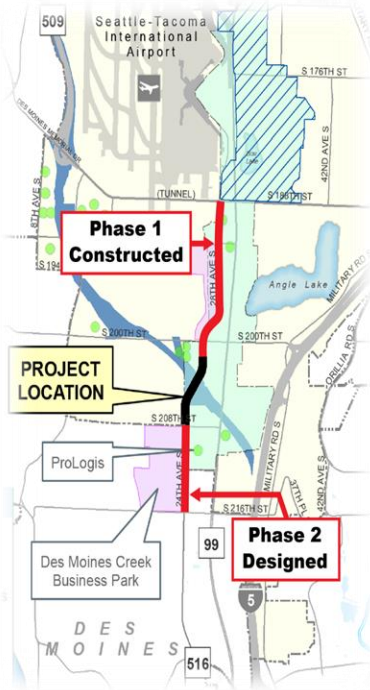


Location: City of Fife, King County
Project Description: Improve truck access to the Port of Tacoma.

- Project is in four phases
 - Phase 0: Environmental mitigation will be complete by end of 2013-15 biennium
 - Phase I/II: City is exploring combining Phase I and II per FMSIB/Transportation Improvement Board discussion-would require FMSIB to move \$2.3M of Phase II funds to 17-19 biennium
 - Phase III: \$22.3M in Connecting WA Transportation Budget (2017-23)
- Total Project Cost: \$53.5M
- FMSIB Share: \$16.2M



Connecting 28th/24th Ave S.



Location: City of SeaTac, King County

Project Description: Constructs a five lane arterial section between S 200th St and S 208th St. The project is also part of the future SR 509

- Funding is secured and construction is underway.
 - Received \$2.0M in State Transportation package for funding bridge over corridor and avoided \$3.5M in reconstruction costs.
- Total Project Cost: \$24.3M
- FMSIB Share: \$2.5M

Port of Kalama



Kalama River Industrial Park Bridge

\$3.8 Million Bridge Investment

- \$844,000 Fed Grant
- \$2.15M FMSIB
- \$500,000 County ED Fund
- \$300,000 Port Funds



Port: \$10M in five buildings

Bennu Glass: \$110M, jobs, + planned expansion

BNSF-Mainline improvements, up to 200 jobs for 2-3 years



TEMCO Grain Elevator Expansion:
Modernize or Demolish Facility?

2005 Improvements

FMSIB \$1.25M

Port \$1.25M

Unit train capable rail yard, upgraded unload capacity

2010

\$6M by TEMCO for additional unit train capacity

2014:

\$7M by Port for additional rail capacity
\$200M (est) by TEMCO for modernization of elevator

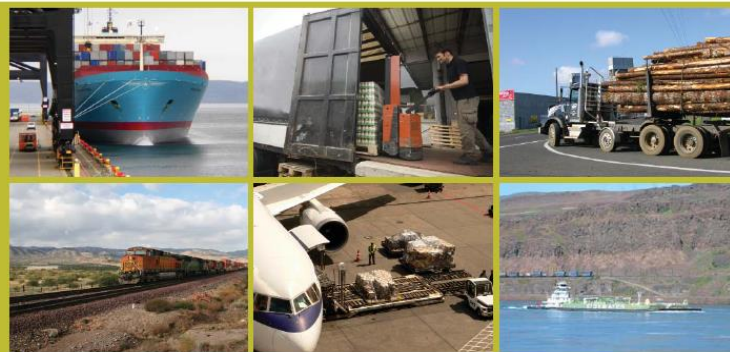
Washington State Freight Advisory Committee



Washington State Freight Advisory Committee

Washington State Freight Trends &
Policy Recommendations
for Air Cargo, Freight Rail, Ports &
Inland Waterways, & Trucking

- MAP-21: Optional and Advisory
- Subcommittee of FMSIB created in 2013
- Advises the State on freight policy
- Three “incarnations”
- Future?

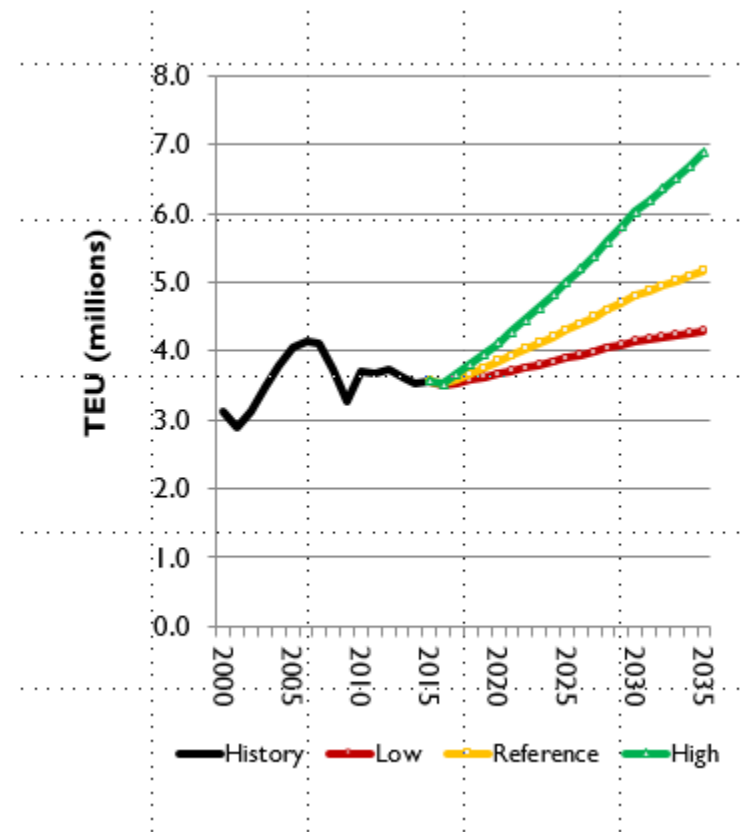


May 2014

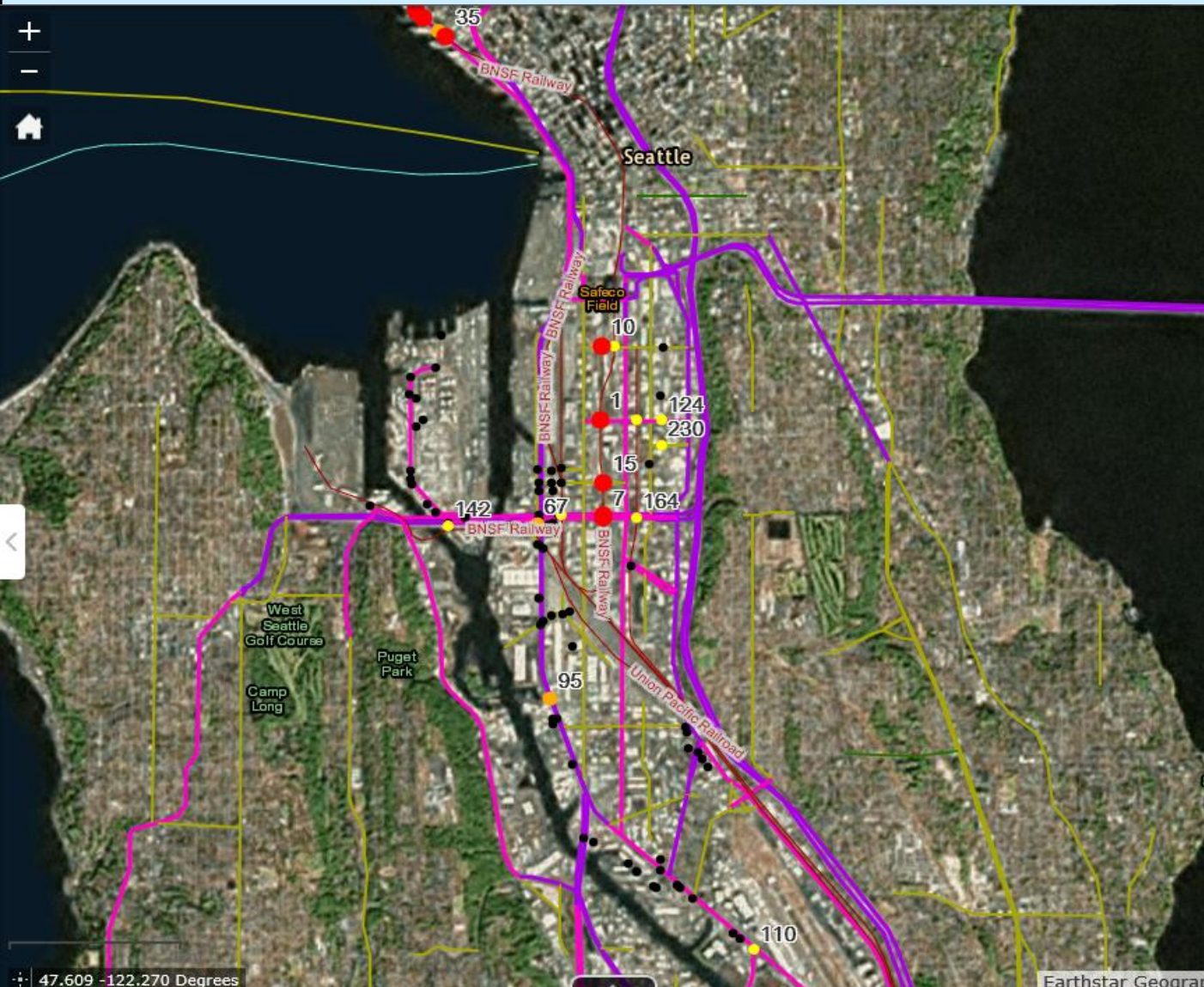
Studies: Marine Cargo Forecast



- FMSIB/WPPA partnership
- Continues the every five-year study frequency that dates back to 1980's
- Forecasts cargo volumes by mode (truck, rail, waterways) on strategic freight corridors
- Serves as input to Legislature, port districts, FMSIB, WSDOT, local and regional plans for infrastructure investment decisions
- Study complete, available



Studies: Road -Rail Conflicts



Layer List

Operational Layers

- Study Crossings (Enabled Step 1 Data)
- Crossings - Step 2 Prioritization Results
- Study Crossings (Step 1 Evaluation)
- Railroad (WSDOT)
- State Routes (WSDOT)
- Major Roadways (WSDOT)
- Freight Routes (FGTSWA)

Joint Transportation Committee
**PRIORITIZATION OF PROMINENT
ROAD-RAIL CONFLICTS IN
WASHINGTON STATE**
January 2017

Prepared by:
transpogroup
WSPR TRANSPORTATION CONSULTANTS

In partnership with:
Parametrix
CONSULTANTS
BERK



Call for Projects



- 2015 Legislature increased FMSIB funding from \$12 m to \$29 m a biennium.
- 2018 Call for Projects Schedule:
 - Call for Projects Initiated January 15, 2018
 - Submittals Due March 30, 2018
 - Preliminary Selection May 1, 2018
 - Project Interviews May 14-15, 2018
 - Final List Adoption June 1, 2018

Questions?



Brian J. Ziegler, P.E., Director

Freight Mobility Strategic Investment Board

ziegleb@fmsib.wa.gov

360-586-9695