

# *Welcome to Port of Bremerton*



# Kitsap Peninsula Region



# Bremerton Marina



# USS Turner Joy



# USS Turner Joy Restoration



# USS Turner Joy Restoration



# Port Orchard Marina



# Marina Wi-Fi & Security Systems

- Increased volume of users
- Expanded coverage area
- Tracks real time usage
- Creates wireless interaction with staff and customer for better service
- Upgraded resolution and coverage areas for cameras
- Can now be managed internally





# Festivals and Events



# Community Partnerships

- The Port partners with many local entities in putting on festivals and events
- Cities, Chamber of Commerce, Main Street Associations, Visit Kitsap, Washington State Beer Commission, Washington State Parks, Lions Club, Sea Scouts, Rotary, Schools
- Boating events and community events go hand in hand



# Parks, Piers & Other Port Amenities



# Soroptimist Overlook



# Evergreen Boat Launch

- City/Port partnership
- Access to Sinclair and Dyes Inlet as well as Puget Sound
- Fishing and boating events held here each year
- Next to the Rotary Evergreen Community park



# Harper Pier



# Annapolis Pier



# Puget Sound Industrial Center - Bremerton





# Olympic View Industrial Park



# Rail Access



←  
Puget Sound &  
Pacific Railroad

# SAFE Boats



# Electric Boat

A large submarine hull is shown under construction in a massive industrial facility. The hull is dark and metallic, with various pipes and structures visible. The facility has a high ceiling with many lights and structural beams. In the background, there are other parts of the facility, including a large circular structure and a sign with the letters 'EB' and a star. The overall scene is brightly lit, highlighting the scale of the project.

Electric Boat

The past, present, and future of submarines.

# Triton Marine Construction



# Airport Industrial Way Extension



# Airport Industrial Way Extension



# Motorsports Park





# CNW Motorway



**LOCATION**

FROM SEATTLE  
 60 Miles  
 100 Miles  
 150 Miles

FROM SACRAMENTO  
 100 Miles  
 150 Miles  
 200 Miles

**TRACK VARIANTS**

**SPEED CALCULATION**

The Pacific Northwest is a region of western North America known for its diverse terrain, scenic views and locally produced agricultural products. The area is known for its scenic views and locally produced agricultural products. The area is known for its scenic views and locally produced agricultural products.

**TRACK VARIANTS**

**SPEED CALCULATION**

**TRACK VARIANTS**

**SPEED CALCULATION**

**TRACK VARIANTS**

**SPEED CALCULATION**

**TRACK VARIANTS**

# Bremerton National Airport



# Fly-In Event

➤ Only AOPA Fly-In for this region

➤ 3 day event

Projected Max:

➤ 500 planes

➤ 1,500 cars

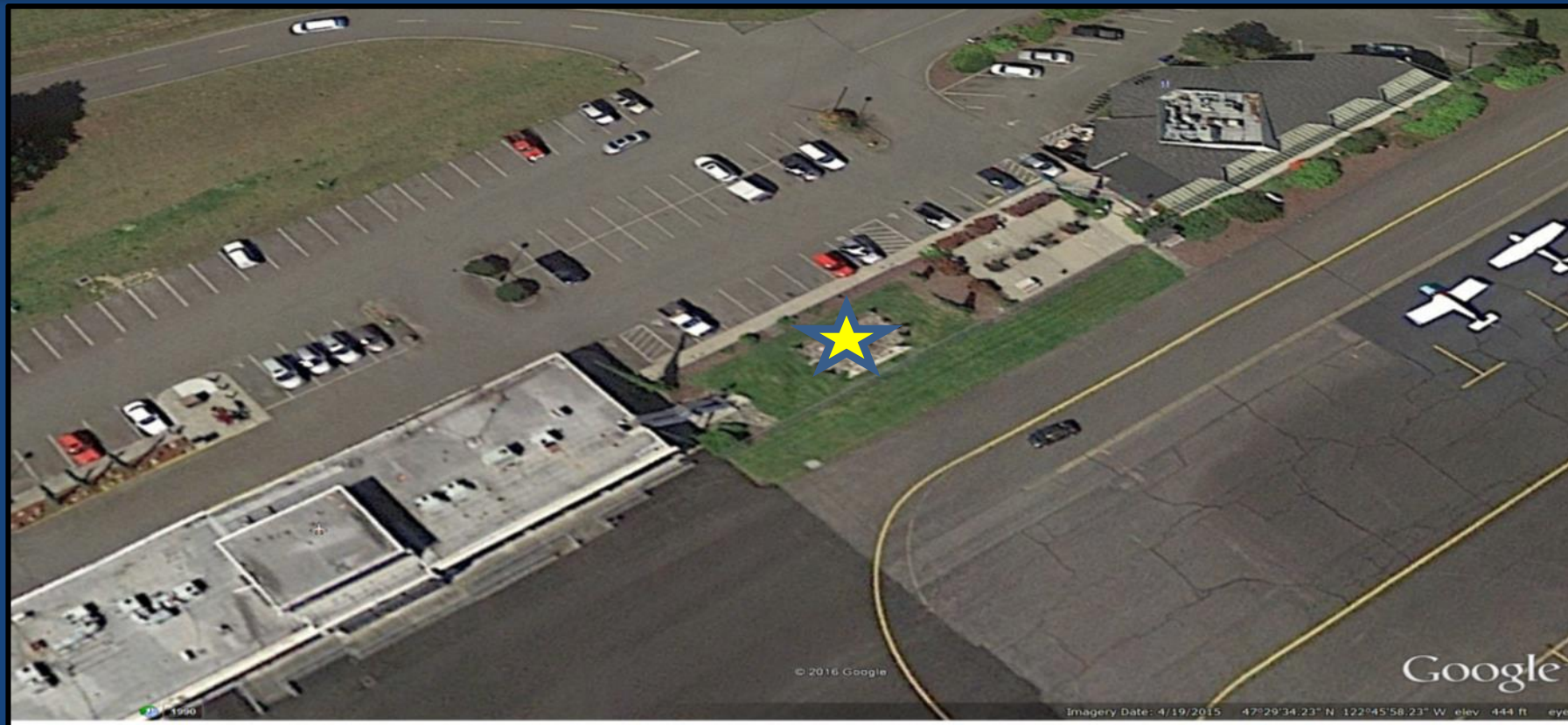
➤ 2,500 Visitors



700 Planes; 2,000 Cars; 4,000  
Visitors



# Proposed Park Site



# Airport Children's Playground



# Airport Diner



# Reseal runway, AWOS upgrade



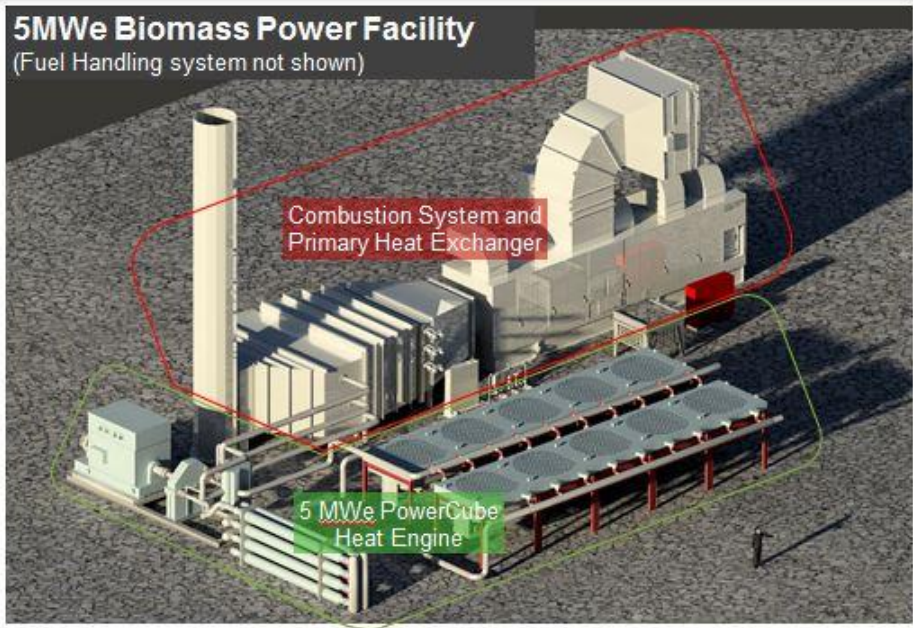


# Business Development



# Super Critical Technologies

**5MWe Biomass Power Facility**  
(Fuel Handling system not shown)



**The Port of Bremerton – A Perfect location for SCT**

# Airlift NW



# Ecological Land Services



# Nature's Caretaker



Nature's Caretaker

Landscape & Irrigation

# Manette Yacht Club Cafe



# Bremerton Aviation Education Center

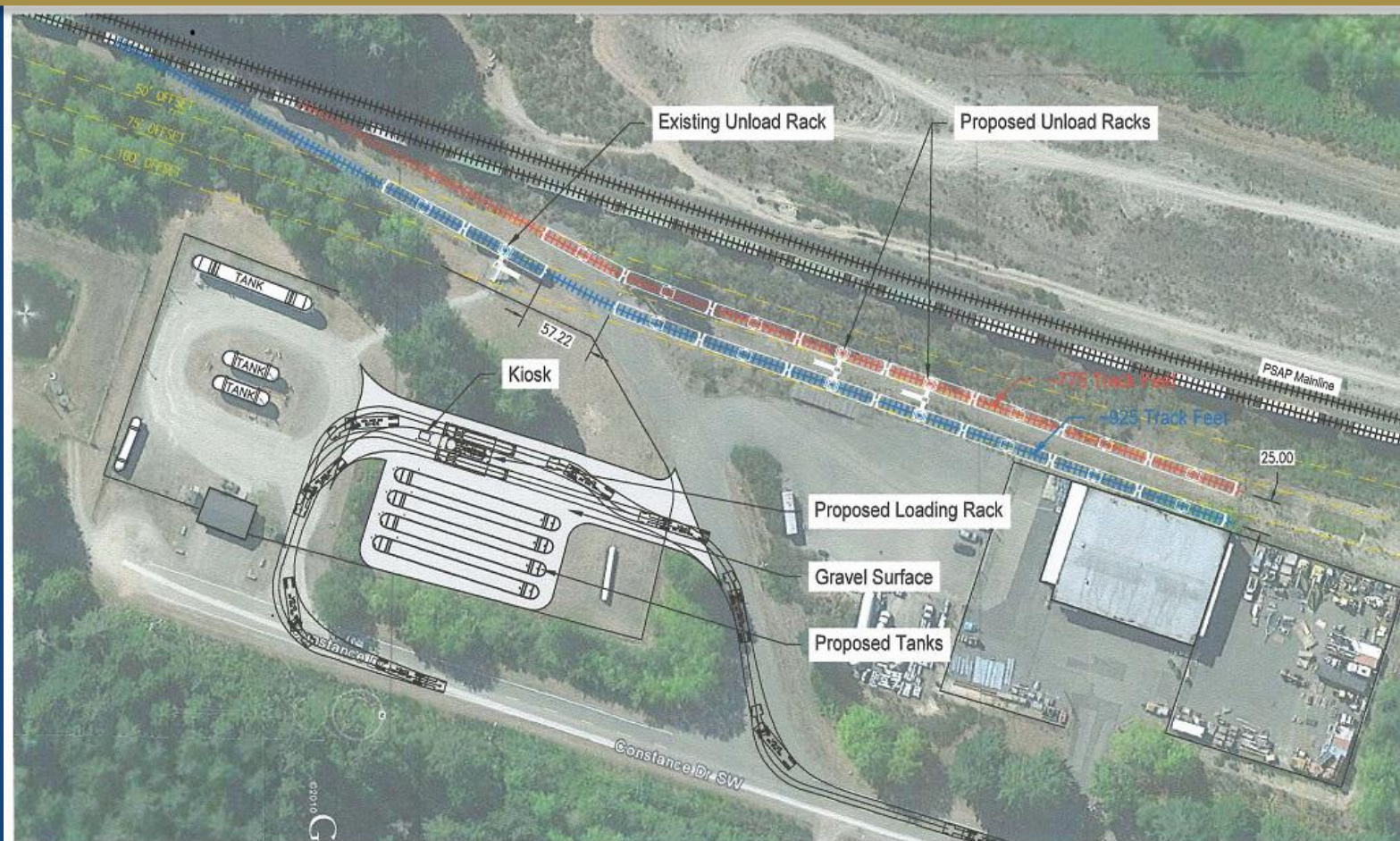


# Washington Street Property





# CHS Energy Facility Expansion



# Future Development

Who specifically is our market and how do we reach them?  
How do we efficiently prepare our land for greater interest?

# Why Port of Bremerton?

- 1700 + acres available
- Pad-ready sites
- Utilities to the site
- Olympic College – job skill training
- Foreign Trade Zone designation
- Workforce ready
- Rail access to deep water Ports
- Airport
- Quality of Life
- Balance of Life



# Strategic Marketing Study



How do BEGIN to turn this...



# Into this.



# Sky Park



# Fearless Leaders







# Commissioners

Axel Strakeljahn

Larry Stokes

Cary Bozeman

Jim Rothlin CEO

Gordon Walgren, Port Attorney