



Freight Mobility Strategic Investment Board

Washington Public Ports Association

November 18, 2015

Ashley Probart

Executive Director

Freight Mobility Strategic Investment Board

Mission Statement



The Washington Freight Mobility Strategic Investment Board (FMSIB) was created by the Legislature to identify and recommend investments that improve and mitigate freight movement on strategic state corridors, grow jobs and the economy, and bolster Washington as a leader in international trade.

The Governor appointed Board consists of 12 public- and private-sector members:

- Advocates for strategic freight transportation projects that bring economic development and a return to the state;
- Focuses on timely construction and operation of projects that support jobs;
- Leverages funding from public and private stakeholders;
- Crosses modal and jurisdictional lines to create funding partnerships; and
- Serves as the de facto freight project screening agency for state and federal policy makers.

FMSIB Members



Dan Gatchet

Dabob Bay
Chair
Citizen Member

Geir-Eilif Kalhagen

Chief Executive Officer
Port of Longview
Ports

John Creighton

Port Commissioner
Port of Seattle

Erik Hansen

Senior Budget Asst. to the Governor
Olympia
Governor

Michael Karnofski

Commissioner
Cowlitz County
Counties

Sheri Call

Vice President
Washington Trucking Associations
Trucking

Johan Hellman

Director of Government Affairs
BNSF Railway
Railroad

Brian Ziegler

Public Works Director
Pierce County
Counties

Lynn Peterson

Secretary
WSDOT

Mark Knudsen

Vice President SSA Marine
Marine Industry

Tom Trulove

Mayor
City of Cheney
Cities

Pat Hulcey

Deputy Mayor
City of Fife
Cities

Mike Eliason*

Director of Public Affairs
Union Pacific
*ex-officio

Funding Sources



2005 Transportation Package:

- \$12M per biennium dedicated to freight
 - \$6M Freight Mobility Investment Account
 - \$6M Freight Mobility Multimodal Account

2011 “Fee Bill”

- \$2.3 M Highway Safety Funds
- Sunsets June 30, 2017

2015 Transportation Package:

- \$3.8M appropriation for 2015-17
- \$17M/biennium increase over 2005 Transportation Package is identified, but is not a permanent distribution

Completed FMSIB Projects



FMSIB PROJECT MAP

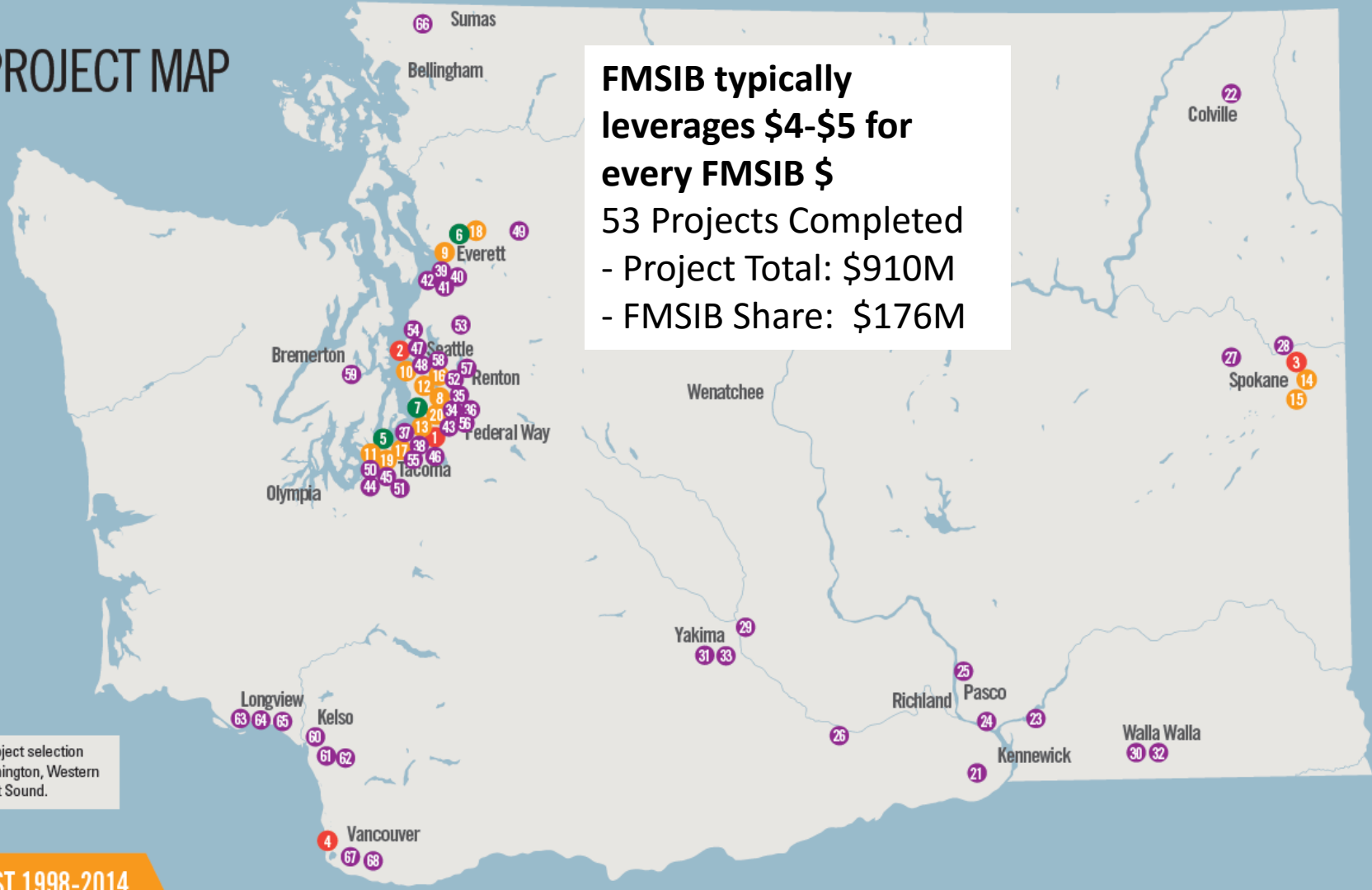
**FMSIB typically
leverages \$4-\$5 for
every FMSIB \$**

53 Projects Completed

- Project Total: \$910M
- FMSIB Share: \$176M

FMSIB balances its project selection between Eastern Washington, Western Washington, and Puget Sound.

COMPLETED LIST 1998-2014





Port of Vancouver-Rail Access



Location: Port of Vancouver, Vancouver Washington

Project Description: Rail trench along Columbia River and tie-in to mainline.

- \$38.34 M phase – Groundbreaking was August 2012
- FMSIB Share of Rail-Tie in: \$6.3M
- FMSIB \$10M commitment nearly all expended
- **\$275M in on-site investments and project business increases**

Port of Kalama



Kalama River Industrial Park Bridge

\$3.8 Million Bridge Investment

- \$844,000 Fed Grant
- \$2.15M FMSIB
- \$500,000 County ED Fund
- \$300,000 Port Funds



Port: \$10M in five buildings

Bennu Glass:

\$110M, jobs, + planned expansion

BNSF-Mainline

improvements, up to 200 jobs for 2-3 years



TEMCO Grain Elevator Expansion: Modernize or Demolish Facility?

2005 Improvements

FMSIB \$1.25M

Port \$1.25M

Unit train capable rail yard, upgraded unload capacity

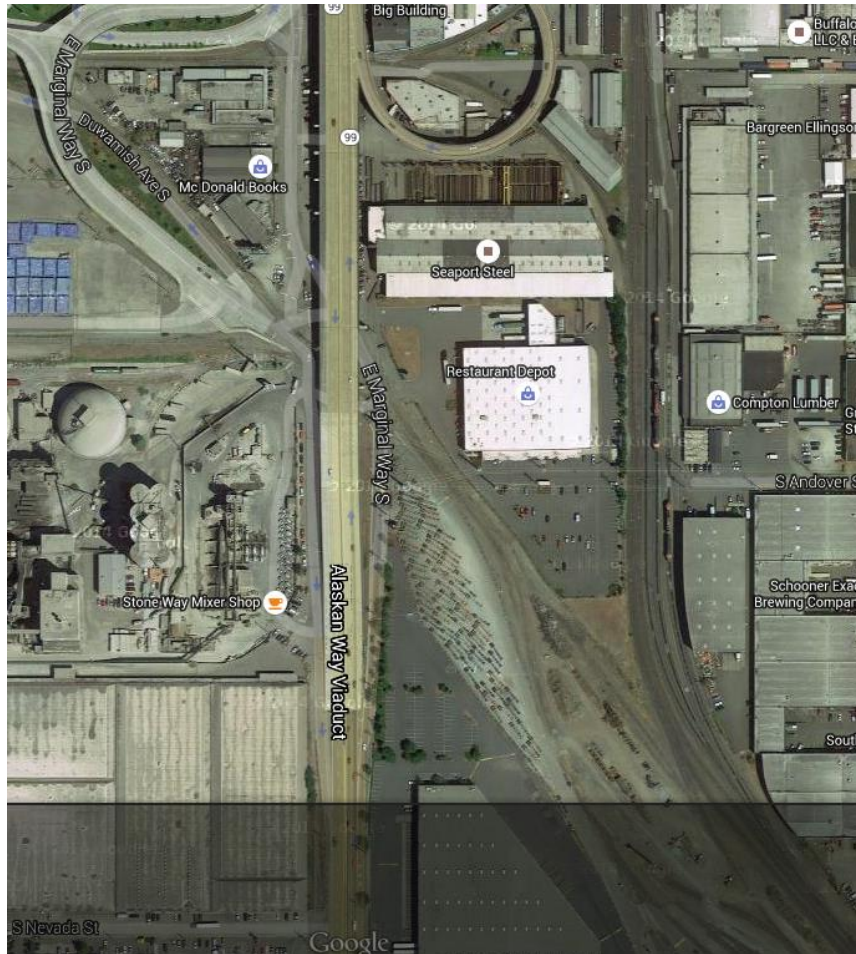
2010

\$6M by TEMCO for additional unit train capacity

2014:

\$7M by Port for additional rail capacity
\$200M (est) by TEMCO for modernization of elevator

E. Marginal Way Truck Access



Location: City of Seattle, King County

Project Description: Eliminates a difficult weaving maneuver from southbound SR 99 to Diagonal Avenue

Total Project Cost: \$56.2M

- **FMSIB Share:** \$6.9M

E. Marginal/Diagonal & Argo Gate Access



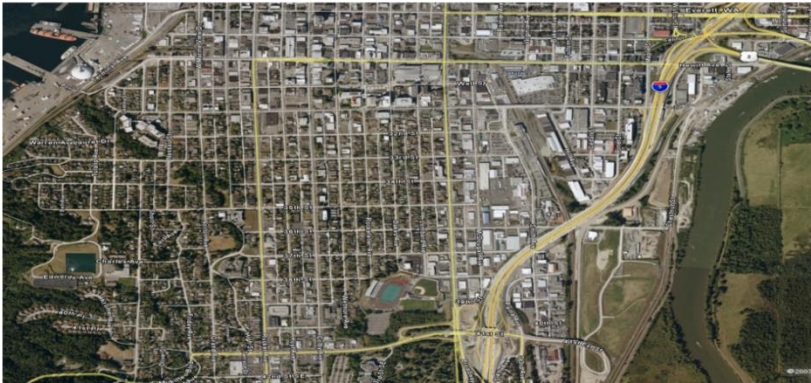
Location: City of Seattle, King County

Project Description: This project provides safe truck access to the gate of Union Pacific's ARGO Yard from a newly designed Duwamish Ave S/East Marginal Way intersection, eliminating a difficult weaving maneuver from southbound SR 99 to Diagonal Avenue.

- Total Project Cost: \$7.6M
- FMSIB Share: \$.994M

Final phase is to install electronic gates in UP's Argo Yard

Port of Everett to I-5 Freight Improvements



Location: City of Everett, Snohomish County

Project Description: The project redirects the truck route to improve access to and from I-5.

- Funding is secured
- Construction has been moved from Summer 2015 to December 2015- \$1.5M in State Transportation package has enabled adding more project components.
- Total Cost: \$4.2M
- FMSIB Share: \$0.4M

Port of Tacoma Rd Intersection



Location: City of Fife, King County

Project Description: Improve truck access to the Port of Tacoma.

- Project is in four phases
 - Phase 0: Environmental mitigation will be complete by end of 2013-15 biennium
 - Phase I/II: City is exploring combining Phase I and II per FMSIB/Transportation Improvement Board discussion-would require FMSIB to move \$2.3M of Phase II funds to 17-19 biennium
 - Phase III: \$22.3M in Transportation Budget
- Total Project Cost: \$53.5M
- FMSIB Share: \$16.2M

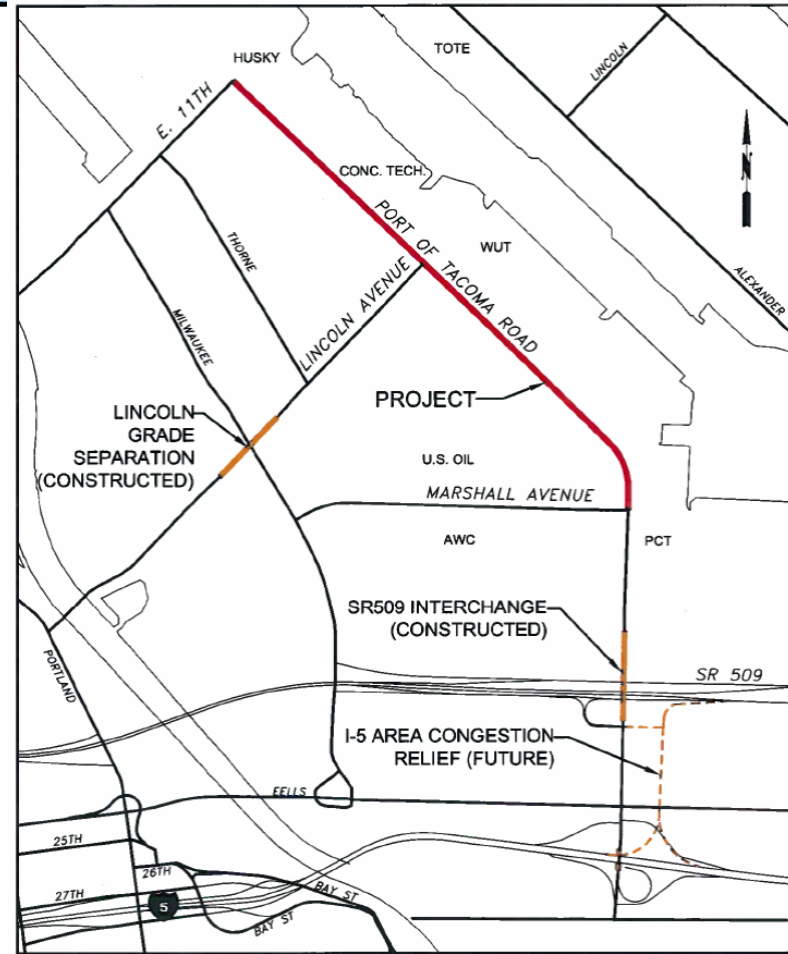
Port of Tacoma Road Rehabilitation



Location: City of Tacoma,
Pierce County

Project Description: Project
will replace the asphalt
surface with concrete panels
and include ITS infrastructure.

- Funding is secured
- Contract awarded.
- Total Project Cost: \$8.86M
- FMSIB Share: \$1M



VICINITY MAP
NOT TO SCALE
PORT OF TACOMA ROAD REHABILITATION PROJECT
E 11TH STREET TO MARSHALL AVENUE

DEPARTMENT OF PUBLIC WORKS

MARCH 2014

Yakima Grade Separations



City Of Yakima MLK JR. & Lincoln Avenue Grade Separation	
Freight Mobility Strategic Investment Board (FMSIB)	\$ 7,000,000
Transportation Improvement Board (TIB)	\$ 5,000,000
Federal Highways Administration (FHWA)	\$13,750,000
Burlington Northern & Santa Fe Railway (BNSF)	\$ 1,750,000
Public Works Trust Fund (P WTF)	\$ 3,000,000
City Of Yakima	(Pending) \$ 4,450,000
Total Project Cost	\$34,950,000
Phase 1 Underground Utility relocation.	
Phase 2 Construction of underpasses between 1st street & 1st Avenue. Railroad bridge and Front Street bridges (including 3-lane underpasses, frontage roads, sidewalks, street lighting & storm system)	



Location: City of Yakima, Yakima County

Project Description: Grade separations that enable free flow of traffic in downtown area.

- Lincoln Avenue (Phase 2): Open to traffic in May, 2012
- MLK Blvd (Phase 3): Open to traffic in Summer, 2014
- Total Project Cost: \$43.61M
- FMSIB Share: \$7M

Policy Support



Pictured: L-R
Renee Trueblood of Interstate Distributors, Seattle Mayor Ed
Murray, USDOT Secretary Anthony Foxx, Port of Seattle CEO
Ted Fick, Senator Maria Cantwell



Studies:



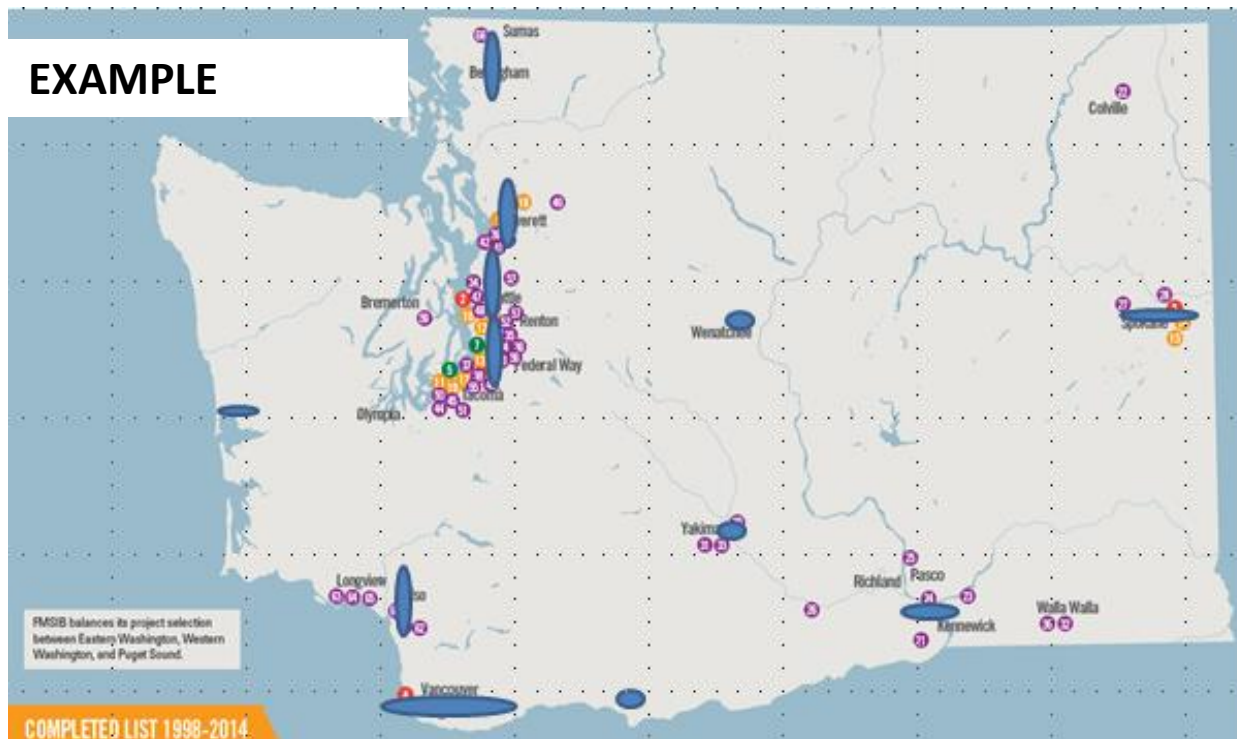
- Marine Cargo Forecast
 - FMSIB/Washington Public Ports Association partnership
 - Continues the five year study that dates back to 1980s
 - Forecasts cargo volumes by transportation mode (truck, rail, waterways) on strategic freight transportation corridors
 - Serves as input to Legislature, port districts, FMSIB, WSDOT, local and regional plans for infrastructure investment decisions

Studies:



- Road-Rail Study-Joint Transportation Committee
 - Study prominent road-rail conflicts
 - Recommend a *corridor-based* prioritization process for addressing the impacts of projects increases in rail traffic.

EXAMPLE



2016 FMSIB Priorities:



Continue Project Delivery

Legislative

- Update State Law: allow FMSIB to remove projects that cannot proceed from FMSIB project list
- Codify new funding-ensure capital budget certainty

Call for Projects

- Official Announcement in February
- Scheduled award in May

Complete Marine Cargo Forecast



Project Funding Concepts

Project Funding Concepts



"I spend most of my time fund-raising."

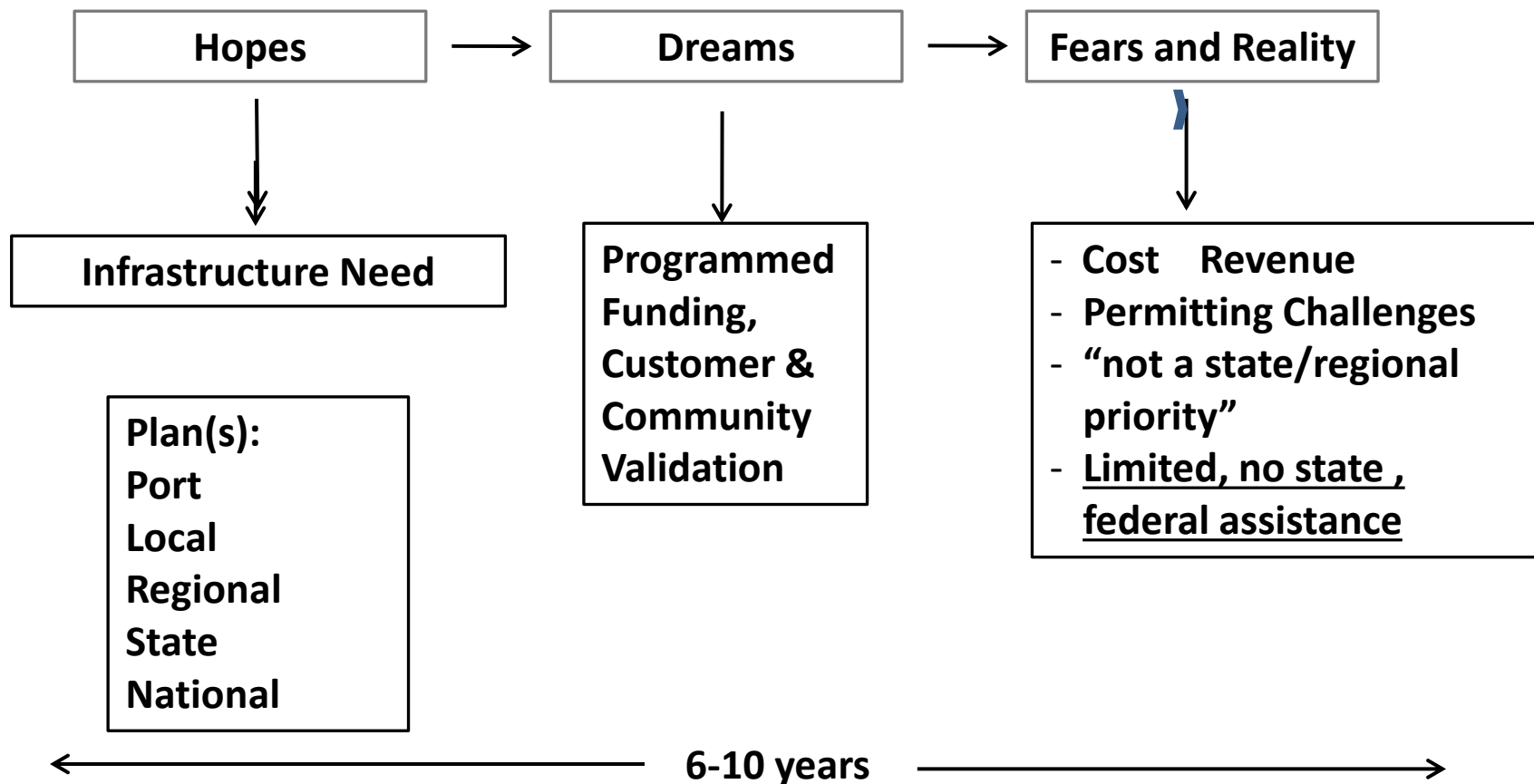
Project Funding Concepts



Problem Statement(s):

- Local jurisdictions struggle to fund public works projects-especially when the public works budget competes with operating expenses, or other tax proposals...
- Local jurisdictions are expected to fund public works projects that are regional in nature.
- Local jurisdictions “position” their budgets to match state, federal programs, but it may not be the #1 or even #10 local priority.

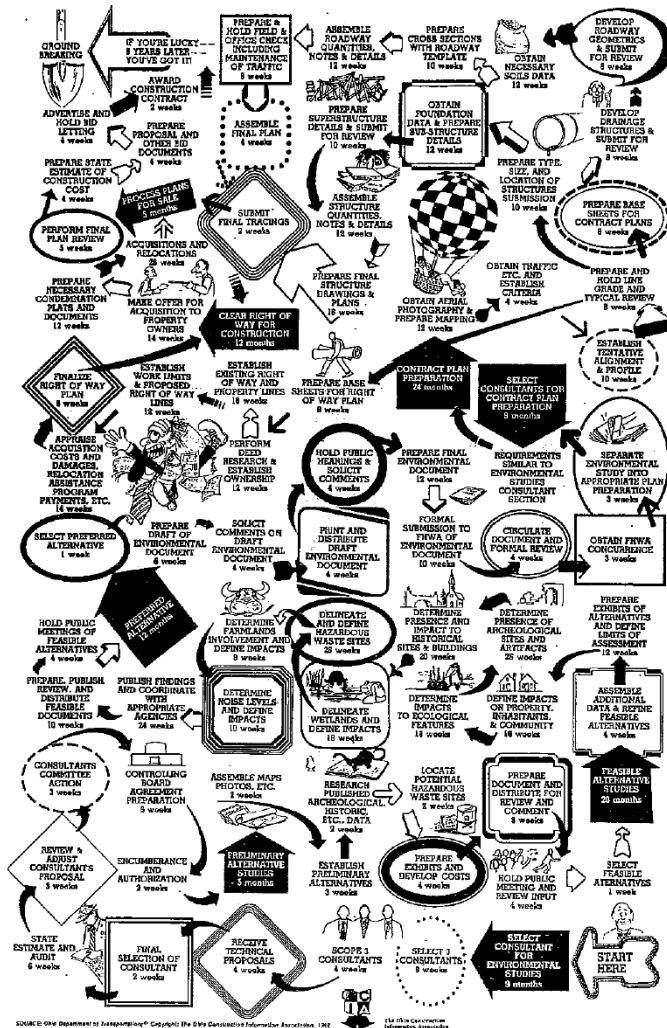
Project Funding Concepts



Project Funding Concepts



SO YOU WANT A HIGHWAY



Project Funding Concepts



Planning (years) ahead: Determine what you want to fund and why:

- Commission wants it?
- Community vision?
- Fundamental investment?
- Private sector partnership opportunity?

Project Funding Concepts



Planning (years) ahead: Determine what you want to fund and why.

- Maintenance/Preservation
- Minor Capital
- Major Capital

- Local?
- Regional?
- State?
- National?

Is it a legacy project?
Is it part of your mission statement?
Is it part of a multi-year vision?

Project Funding Concepts



Planning (years) ahead:

- Develop a problem statement
- Write a Project Description and its components:
 - Local
 - Regional
 - State, Federal
- Collect baseline data
- Document, document....

Project Funding Concepts



Construction methods:

Minor construction:

- Small works roster

Major construction:

- Design-Bid-Build
- Design-Build (DB)
- General Contractor-Construction Manager (GC-CM)

} \$10M +
and special
expertise

Financing Tools- State



State Agency Funding Sources:

- ✓ Community Economic Revitalization Board
- ✓ Freight Mobility Strategic Investment Board
- ✓ State Capital Budget (Bonds)
- Public Works Assistance Account
- Transportation Improvement Board
- WSDOT-Highways and Local Programs
- Recreation and Conservation Office (WWRP – Parks and Trails)
- Ecology Water Quality Financial Assistance
- Washington State Department of Health-DWSRF

Project Funding Concepts- Partners and Competition



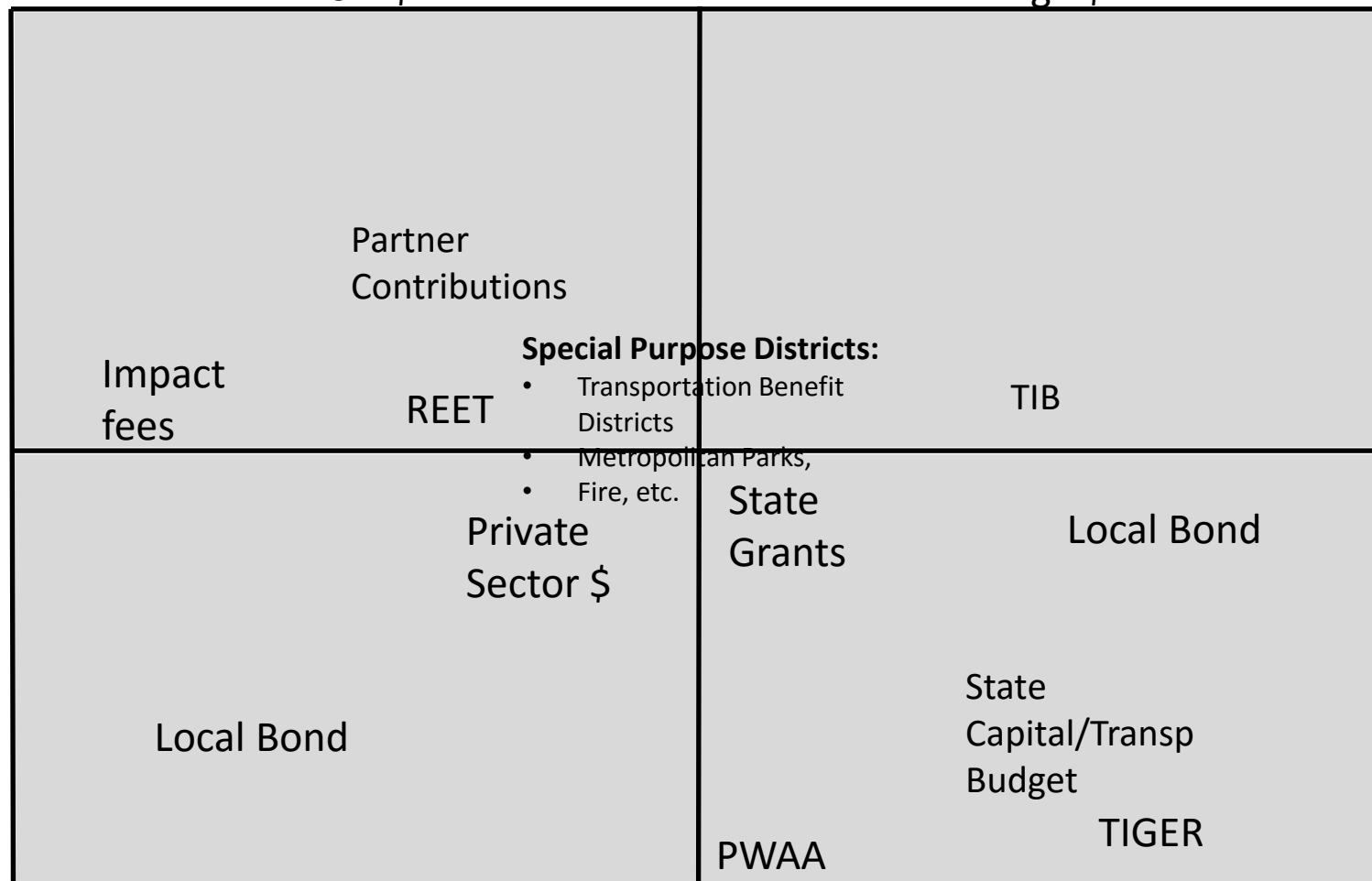
Identify the program(s) or revenues that meet your objective

Low \$

High \$

High Success

Low Success

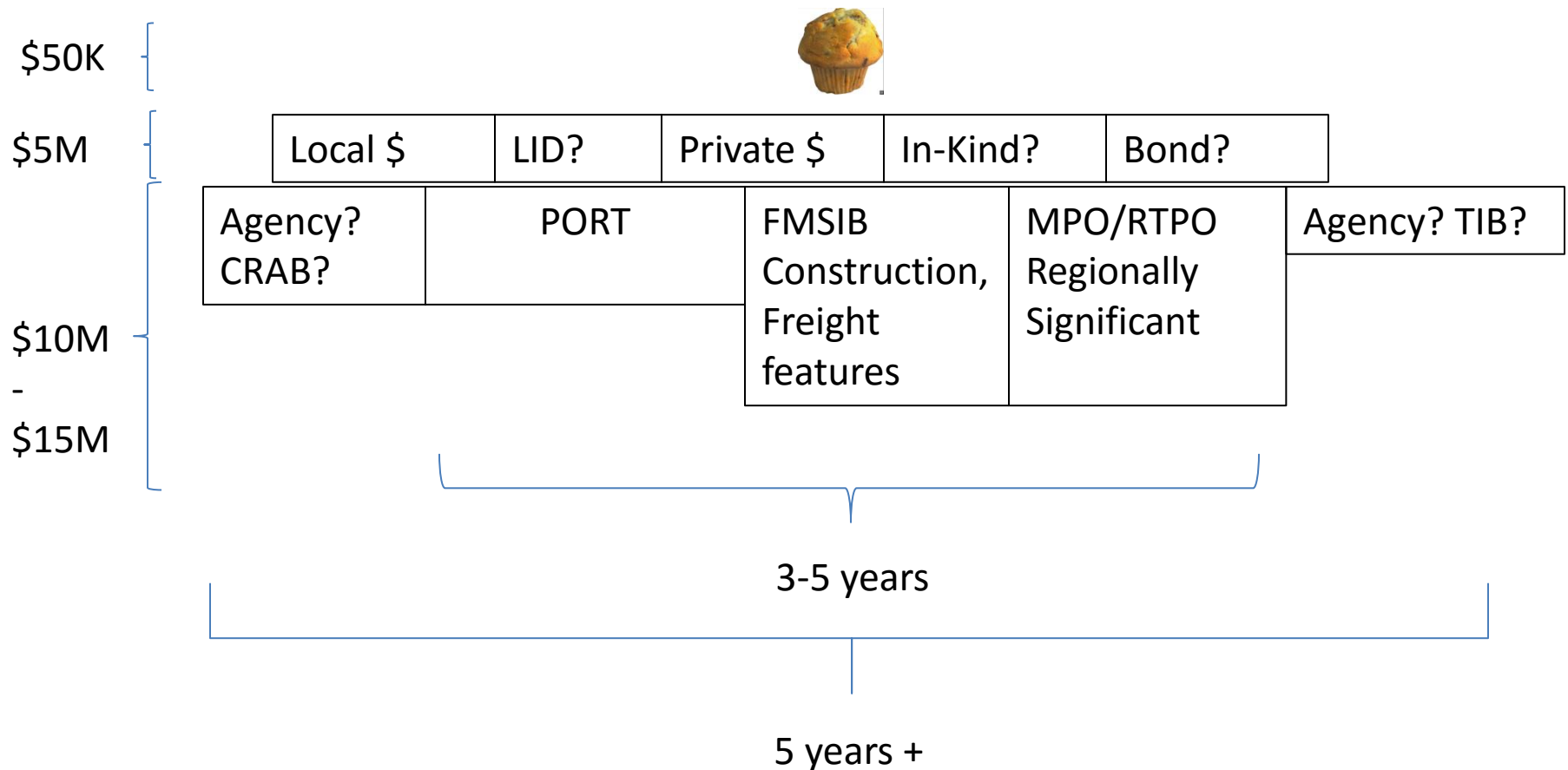


EXAMPLE

Project Funding Concepts



Identify the program(s) that meet your objective
Discussion Example





Not all ideas are popular...



But it's worth it.....





Questions?

Contact information:

Ashley Probart
Executive Director
Freight Mobility Strategic Investment Board
probara@fmsib.wa.gov
360-586-9695 or cell: 360-790-5472