

# Planning for Success: Comprehensive Schemes and Strategic Plans

Scott Keillor, BergerABAM

Washington Public Ports Association | Monday, 24 July 2017



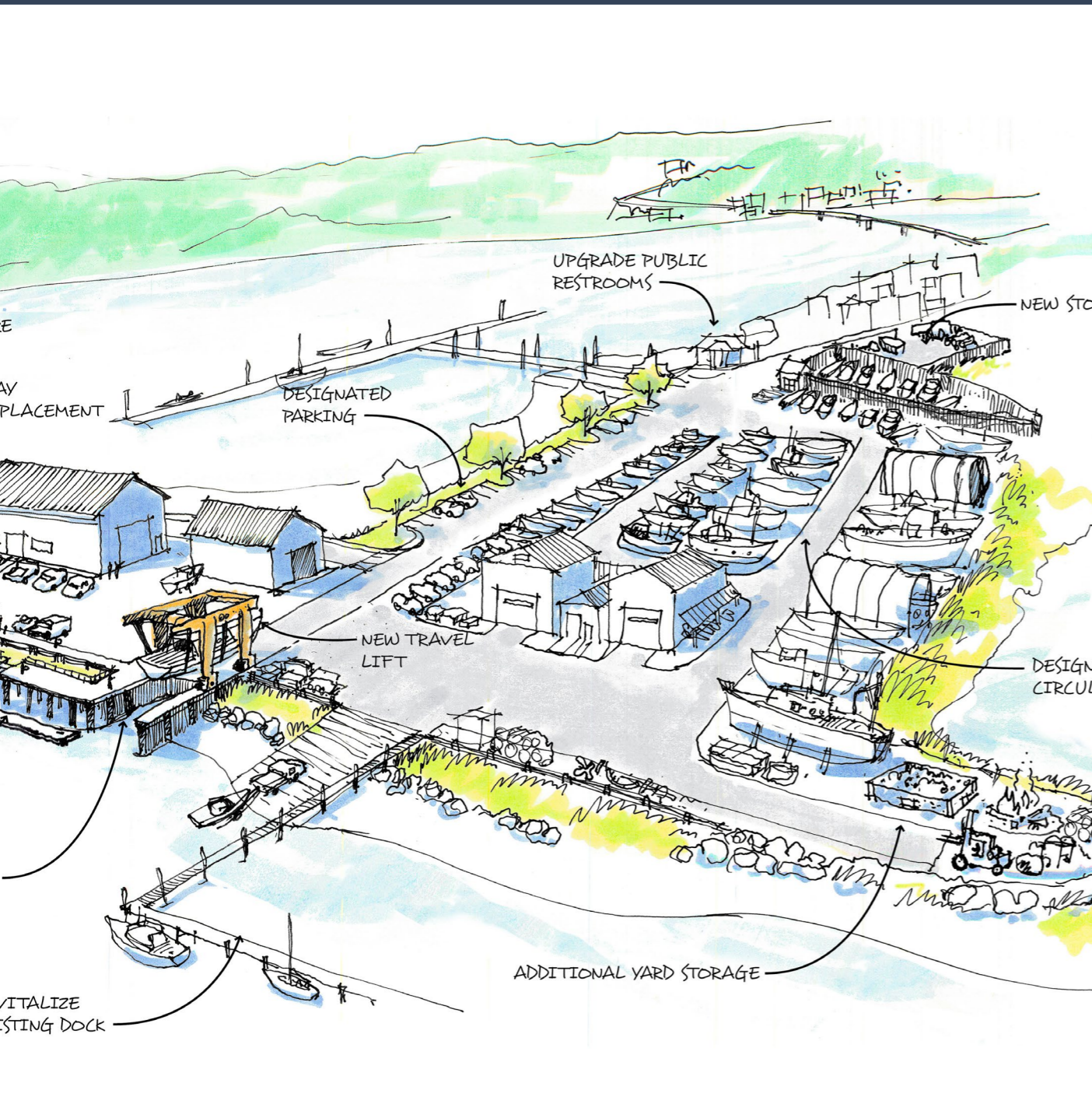




## Agenda:

- Comprehensive Schemes / Strategic Plans Purpose
- Core Port Commissioner Tools
- Why Scheme and Plan?
- Planning Resources





# Comprehensive Schemes Purpose :

- Values
- Vision
- Mission
- Goals
- Objective
- Implementation Plan
- Updates



## Strategic Plans Purpose :

- Community Needs
- Market Assessment
- Facilities Assessment
- Projects
- Capital Improvement Plan





# What can your Port Comprehensive Scheme do for you?

- Communicate the port's vision and goals
- Determine project and policy direction
- Prioritize the budget
- Increase transparency with the public





## Core Port Commissioner Tools:

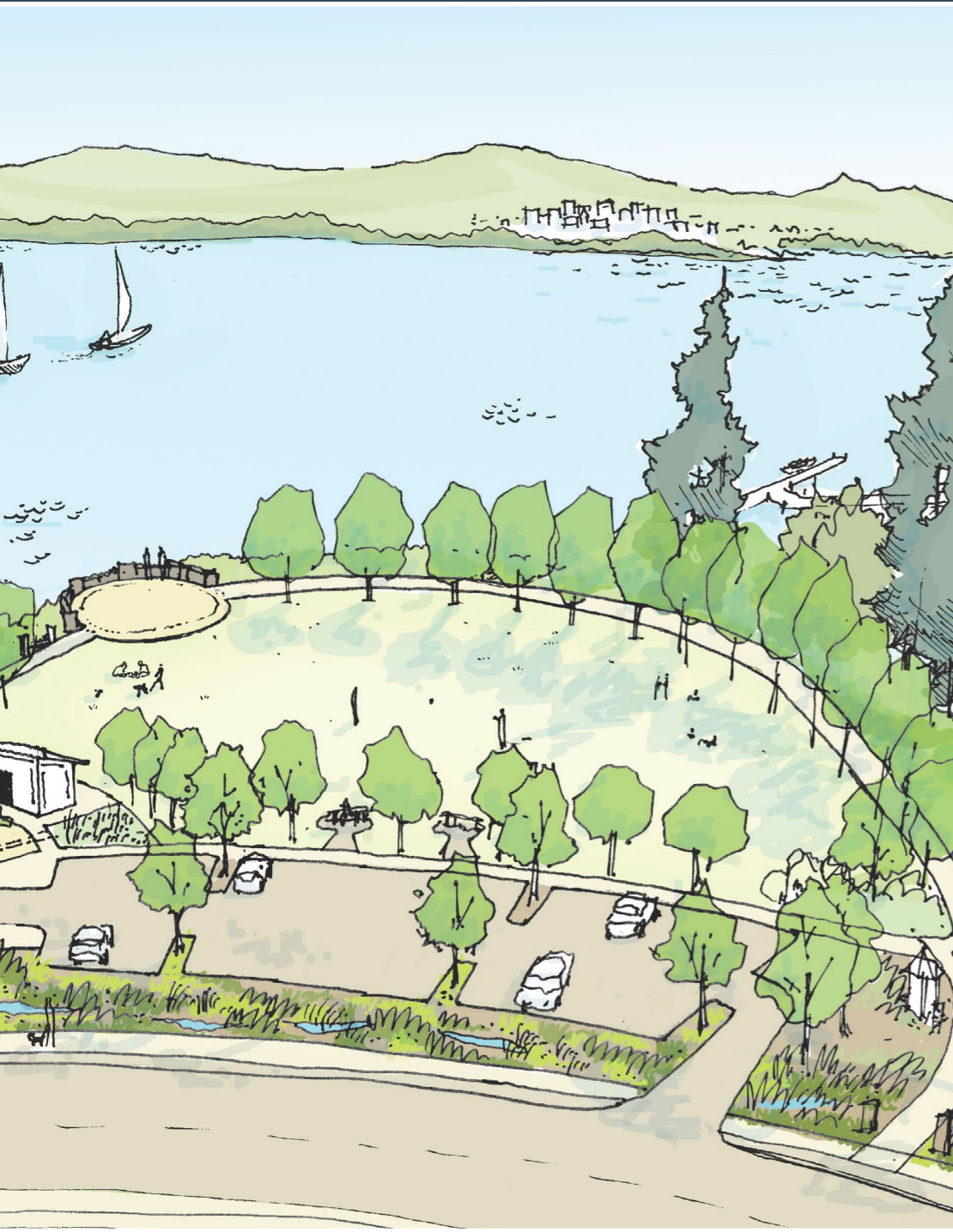
- Comprehensive Scheme (CSHI)
- Strategic Plan
- Budget
- Delegation of Authority





## Why Scheme and Plan?

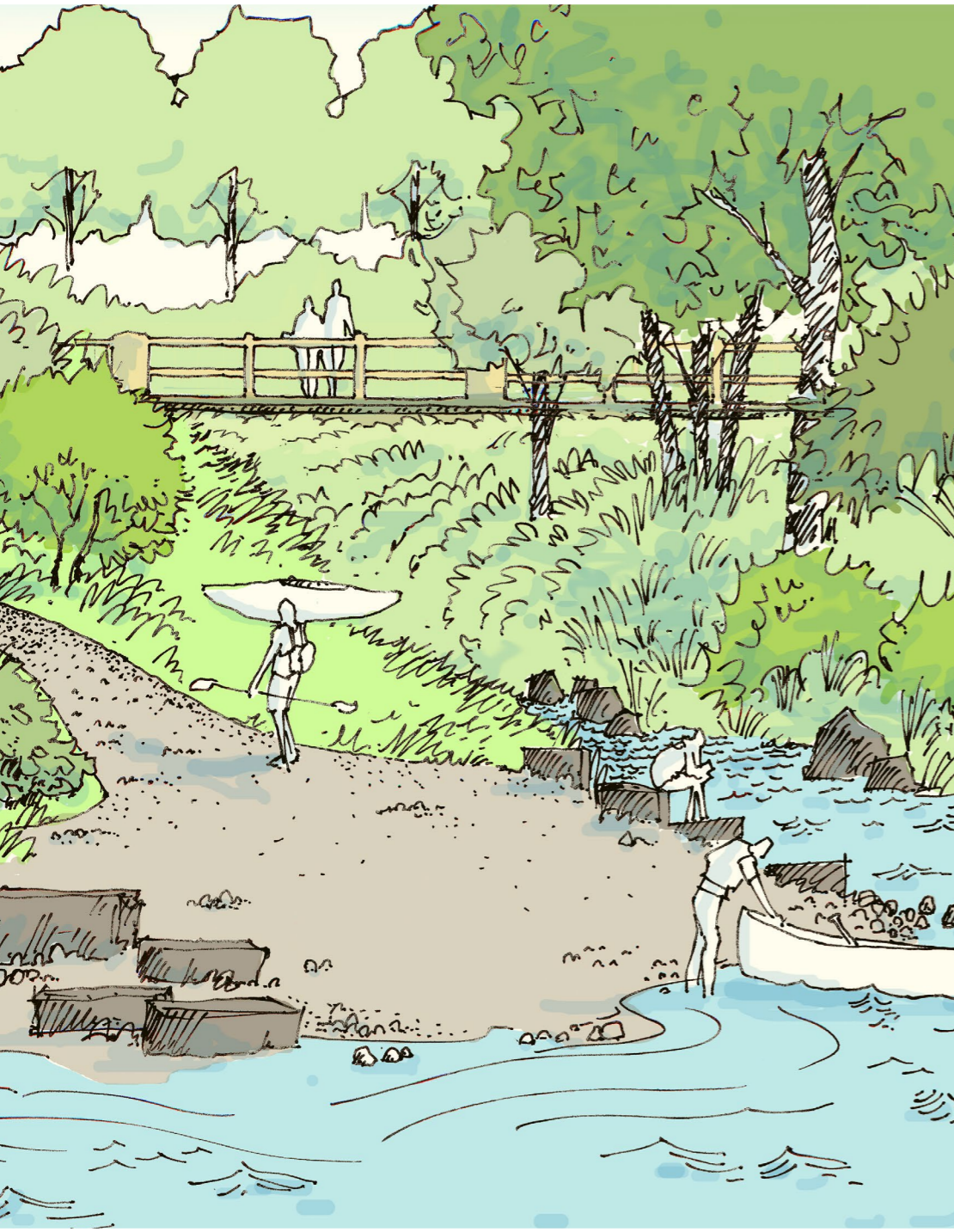
- **Funding:** RCW 53.20.010 requires ports to complete Comprehensive Schemes prior to expenditures beyond funds needed to complete the CSHI
  - “It shall be the duty of the port commission of any port district, before creating any improvements hereunder, to adopt a comprehensive scheme of harbor improvements...”



## Why Scheme and Plan?

- **Flexibility:** If a project is not in the current CSHI, the port must hold a public hearing to amend and add the project prior to funding

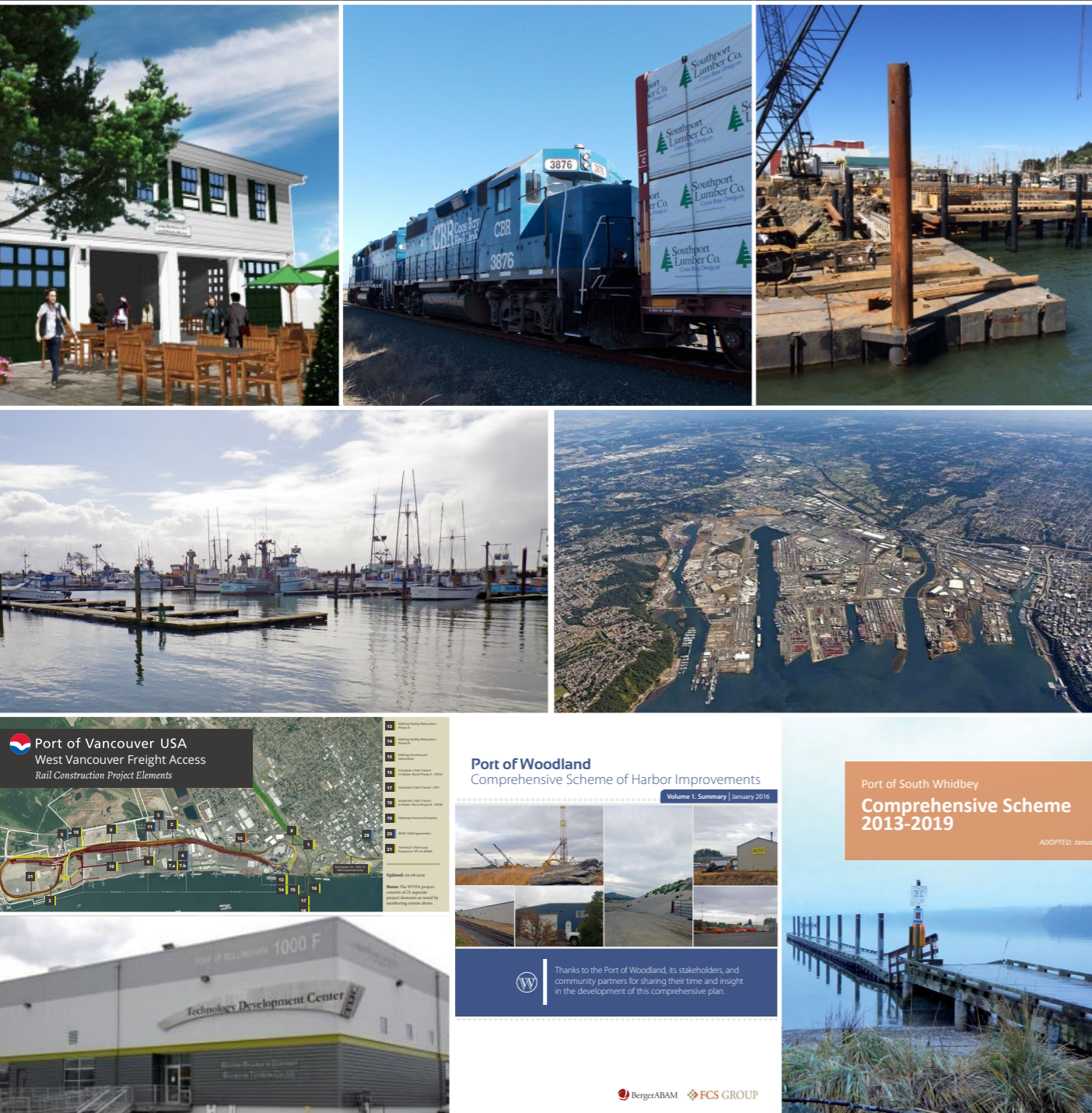




## Why Scheme and Plan?

- **Integration:** Develop a plan that benefits the community
- Coordinate with City and County comprehensive plans
- Involve the public
- Create transparency and gain support

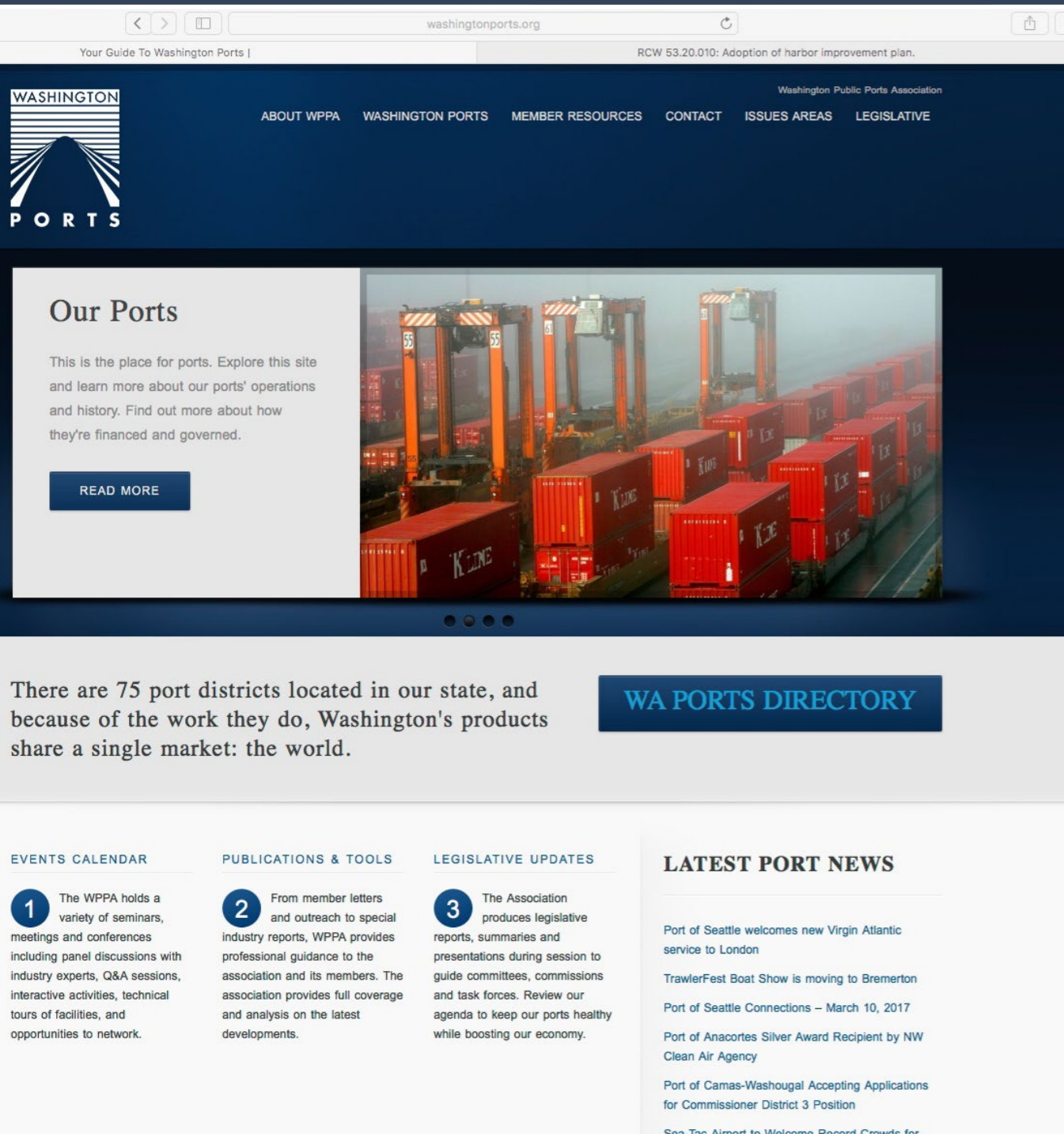




# What is your Comprehensive Scheme doing for you?

- **Feedback on existing port plans**
  - Success stories
  - New and innovative
  - Areas for improvement





## Available Resources:

- Review the RCW
  - [www.apps.leg.wa.gov](http://www.apps.leg.wa.gov)
- WPPA's Comprehensive Plan Guidebook
  - [www.washingtonports.org](http://www.washingtonports.org)
- Review example plans from other ports and your peers
- Familiarize yourself with local City and County plans
- Keep notes for future plan updates, potential projects, and policies





## Planning for Success:

- Teamwork
- Transparency
- Creativity
- Keep your port schemes and strategies current!



# Planning for Success: Comprehensive Schemes and Strategic Plans

Scott Keillor, BergerABAM

Washington Public Ports Association | Monday, 24 July 2017

