

An aerial photograph of a large industrial port facility. In the foreground, a large red and white ship is docked at a pier. To the right, a long train of red freight cars is visible. The facility includes several large white grain silos, various industrial buildings, and a curved road. In the background, there are mountains and a body of water.

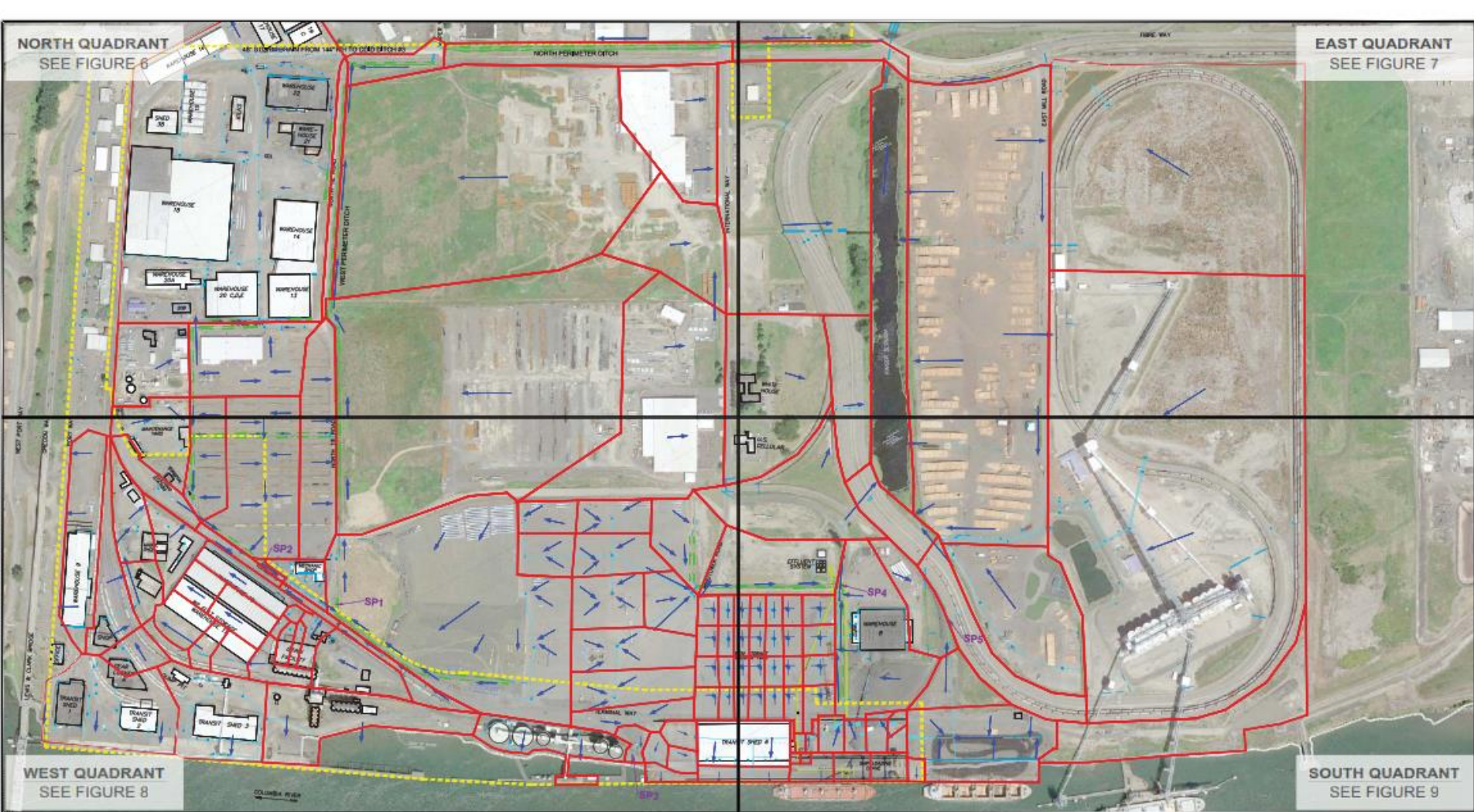
STORMWATER MASTER PLAN IN THE STYLE OF THE FRESH PRINCE AND DJ JAZZY JEFF



WASHINGTON'S WORKING PORT



WASHINGTON'S WORKING PORT



LEGEND

- SUBBASIN BOUNDARY
- - - - CITY LIMITS
- SP1 ISGP SAMPLE POINT
- FLOW ARROW
- CATCH BASIN
- STORM PIPE
- DITCH
- STORM EFFLUENT

Storm drainage system based on limited historic data and



Kennedy/Jenks Consultants

Part of Longview
STORMWATER MANAGEMENT PLAN

EXISTING STORMWATER SYSTEM
KEY MAP

K/J 1296002*03



WASHINGTON'S WORKING PORT

SP 2 - MECHANICS SHOP



SP 3 – URBAN GREEN BIOFILTER

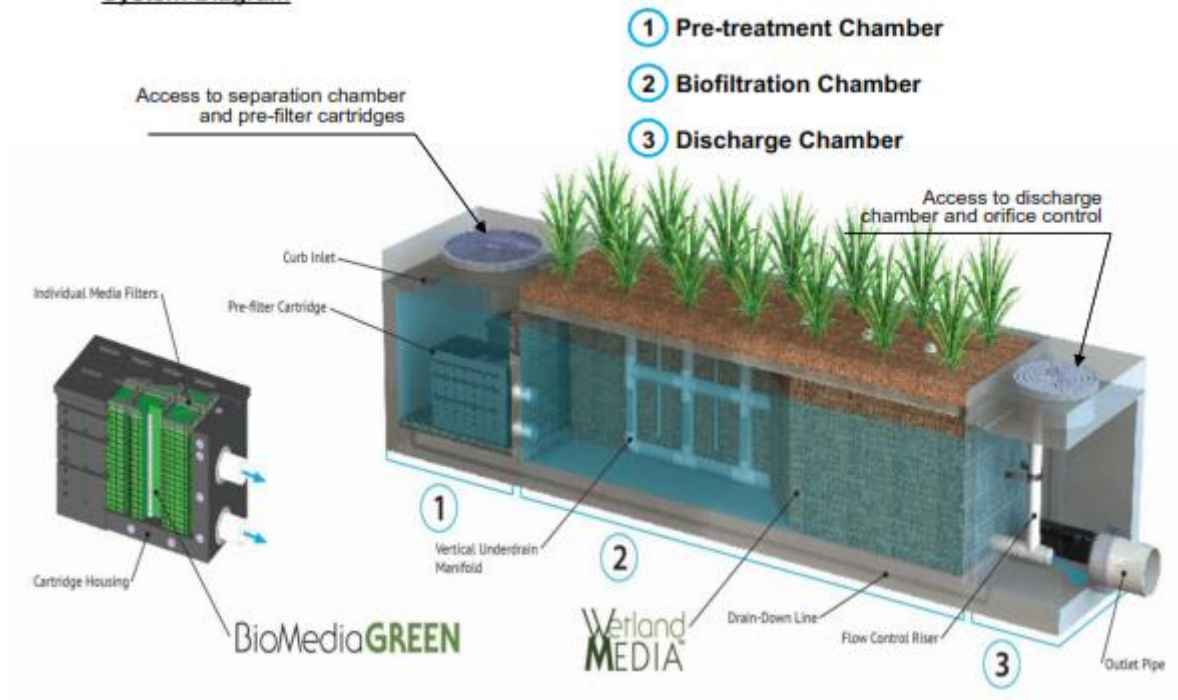


SP 5 – BIORETENTION POND



SP 1 – MODULAR WETLAND SYSTEMS

System Diagram



SP 1 - BIOFILTRATION



