



PALAMINA
CORP.



OCTOBER 2018

Disclaimer



This presentation contains projections and forward looking information that involve various risks and uncertainties regarding future events. Such forward-looking information can include without limitation statements based on current expectations involving a number of risks and uncertainties and are not guarantees of future performance of the Corporation. These risks and uncertainties could cause actual results and the Corporation's plans and objectives to differ materially from those expressed in the forward looking information. Actual results and future events could differ materially from anticipated in such information. These and all subsequent written and oral forward-looking information are based on estimates and opinions of management on the dates they are made and expressly qualified in their entirety by this notice. The Corporation assumes no obligation to update forward-looking information should circumstances or management's estimates or opinions change.

The technical and scientific information included herein has been reviewed and approved by Donald Mc Iver M.Sc., FAusIMM Vice President Exploration of the Company, and a qualified person under National Instrument 43-101 of the Canadian Securities Administrators.

Proven Minefinders



- **Palamina establishes gold focus in Peru in 2016**
- Acquires geological exploration team with cumulative **35 years experience in Puno Orogenic Gold Belt (“POGB”)**
- **Palamina secures 5 district scale gold projects in POGB in 2017** covering 76,912 hectares in south eastern Peru
- Two in-country geological teams conducting **25 day field campaigns**
- All 5 POGB projects visited and prioritized
- **Systematic exploration programs underway in 2018**
- **Coasa emerging as flagship project**

Palamina Capital Structure



SHARES OUTSTANDING	29,741,371
OPTIONS	2,250,000
WARRANTS *	7,166,667
SHARES FULLY DILUTED*	39,158,038

* Full warrant @ \$0.50 trigger @ \$0.90 exp. Aug 2019

WORKING CAPITAL	\$ 980,000
------------------------	-------------------

MAJOR SHAREHOLDERS	
ERNESTO ECHAVARRIA	9 %
DIRECTORS & MANAGEMENT	15 %

As at Sept 15, 2018
All values in Canadian \$

Management, Directors & Advisory Board



Proven track record of discovery and development:



Andrew Thomson
Director & President



Hugh Agro, *B.Sc. M.B.A.* Director



Alistair Waddell *B.Sc.(Hons), MAusIMM* Director



Darin Wagner, *P.Geo.* Director



Brian Jennings, *CA, B.Sc.*
Chief Financial Officer



Don Mc Iver, *M.Sc., FAusIMM **
V.P. Exploration



Yury Valdivieso, *M.Sc. **
Exploration Manager

***“Palamina’s team
has raised +\$50M
& defined +7M oz gold
in the last 2 years”***



Douglas Reeson, *M.B.A.*
Advisory Board



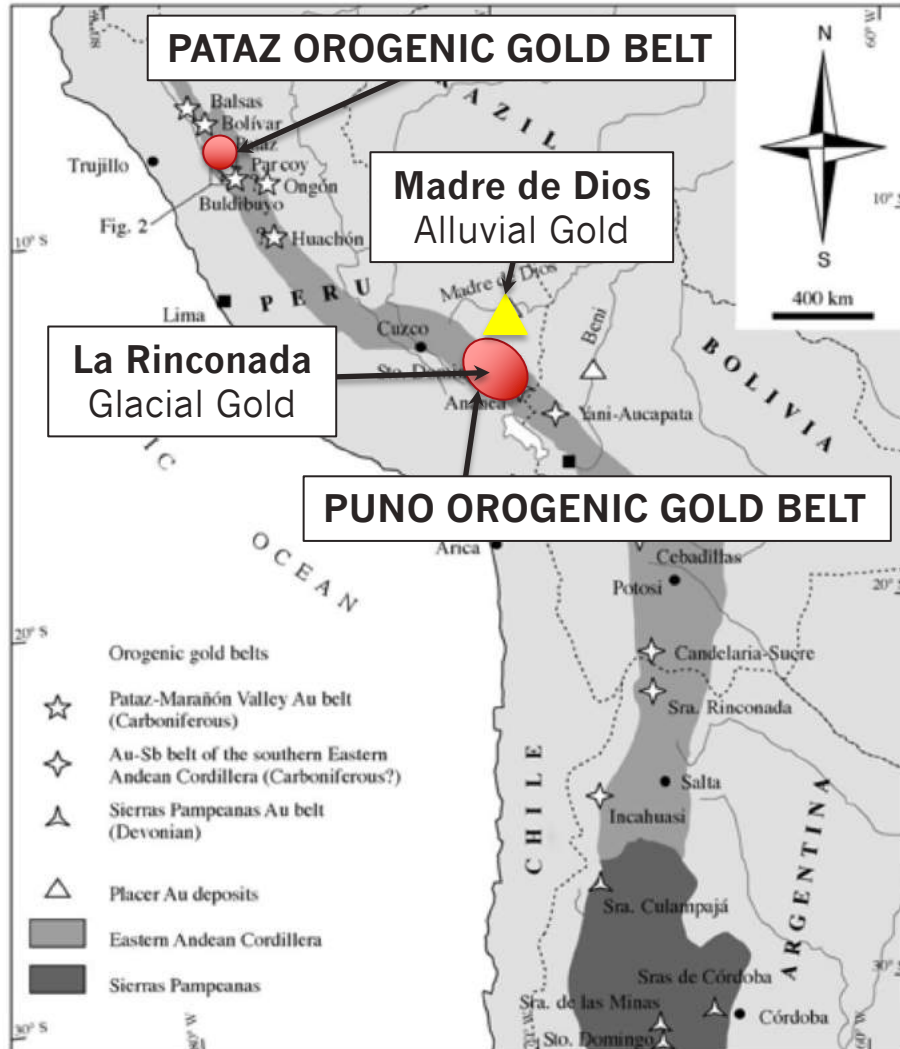
Jose Vizquerra-Benavides, *M.Sc.*
Advisory Board



Phillip Walford, *B.Sc., P.Geo.*
Advisory Board

*** In-country geological team with 35 years experience in Puno Orogenic Gold Belt**

Why South Eastern Peru?



- Orogenic gold belt extends +3,400 km from N Peru - through Bolivia - to N Argentina
- Pataz area over 40 million ounces gold
- **The Puno Orogenic Gold Belt is the southern-most in Peru & produced; 168,000 ounces of gold in 2016**
- **Madre de Dios alluvial deposits produced; 500,000 ounces of gold in 2016**
- Ground-truthed by informal and artisanal miners with little to no systematic mining or drilling to test depth or strike potential. **Large quantity of gold unreported and traded illegally through Bolivia**

Puno Orogenic Gold Belt



Modern Day GOLD RUSH underway in POGB

Puno orogenic gold deposits are similar to those in eastern Canada & Venezuela. In POGB, gold occurs as free gold in sediments and quartz veins, metallurgic recoveries of over 85% generally possible

More than 700 sq. km's of jungle deforestation due to 30,000 informals ***alluvial gold mining*** at **MADRE DE DIOS**

Known regional structures hosting gold mineralization in the Puno gold belt are >5 km in length with mineralized widths ranging from 0.2 m to >50.0 m; **individual economically mineralized zones may be stacked up to 40 m wide**

Approximately 30,000 informal miners at >5,000 m elevation ***orogenic + alluvial gold mining*** at **LA RINCONADA**

Widespread informal and artisanal miners working & ground-truthing high-grade gold at <100 m below surface

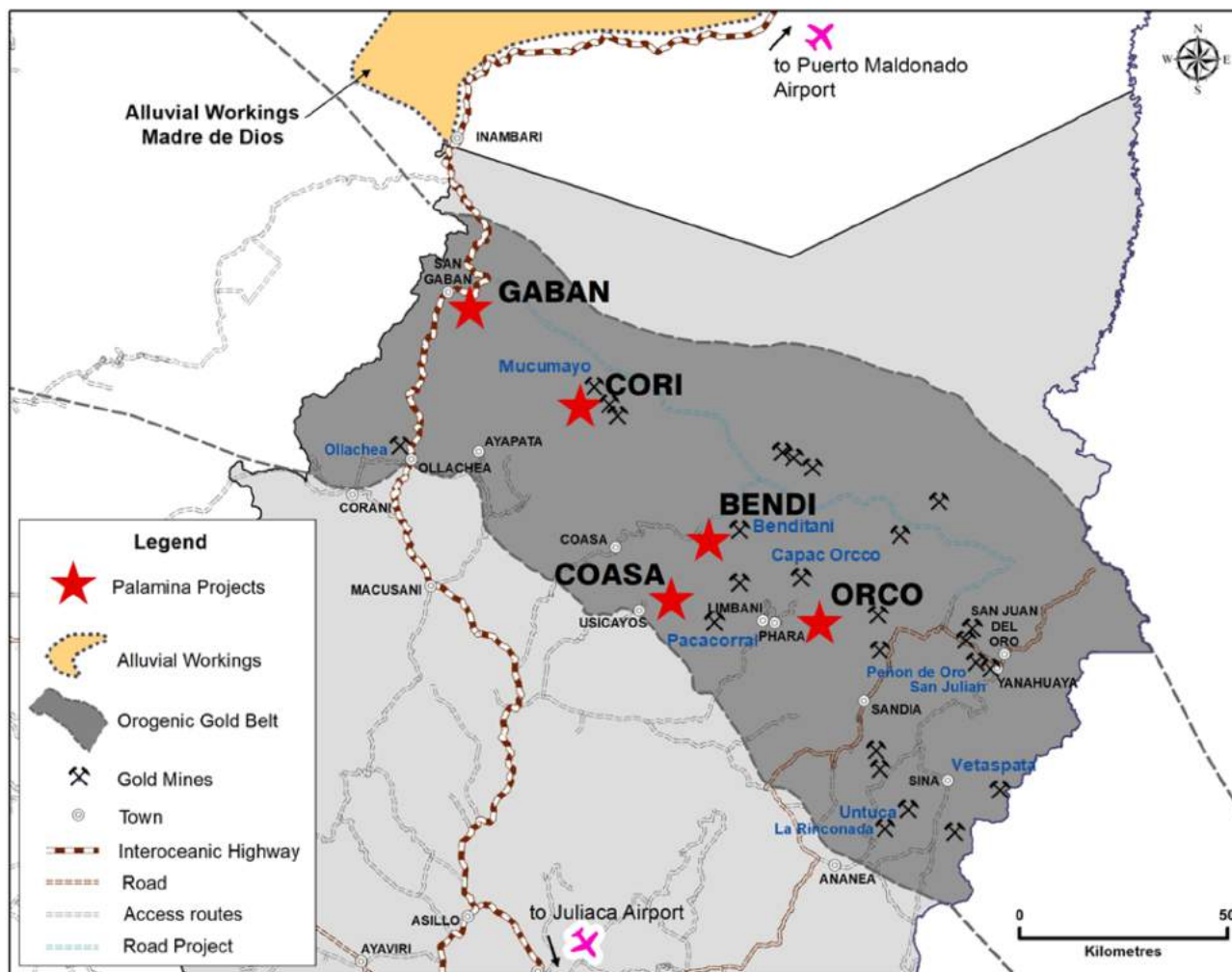


Artisanal alluvial mining at MADRE DE DIOS



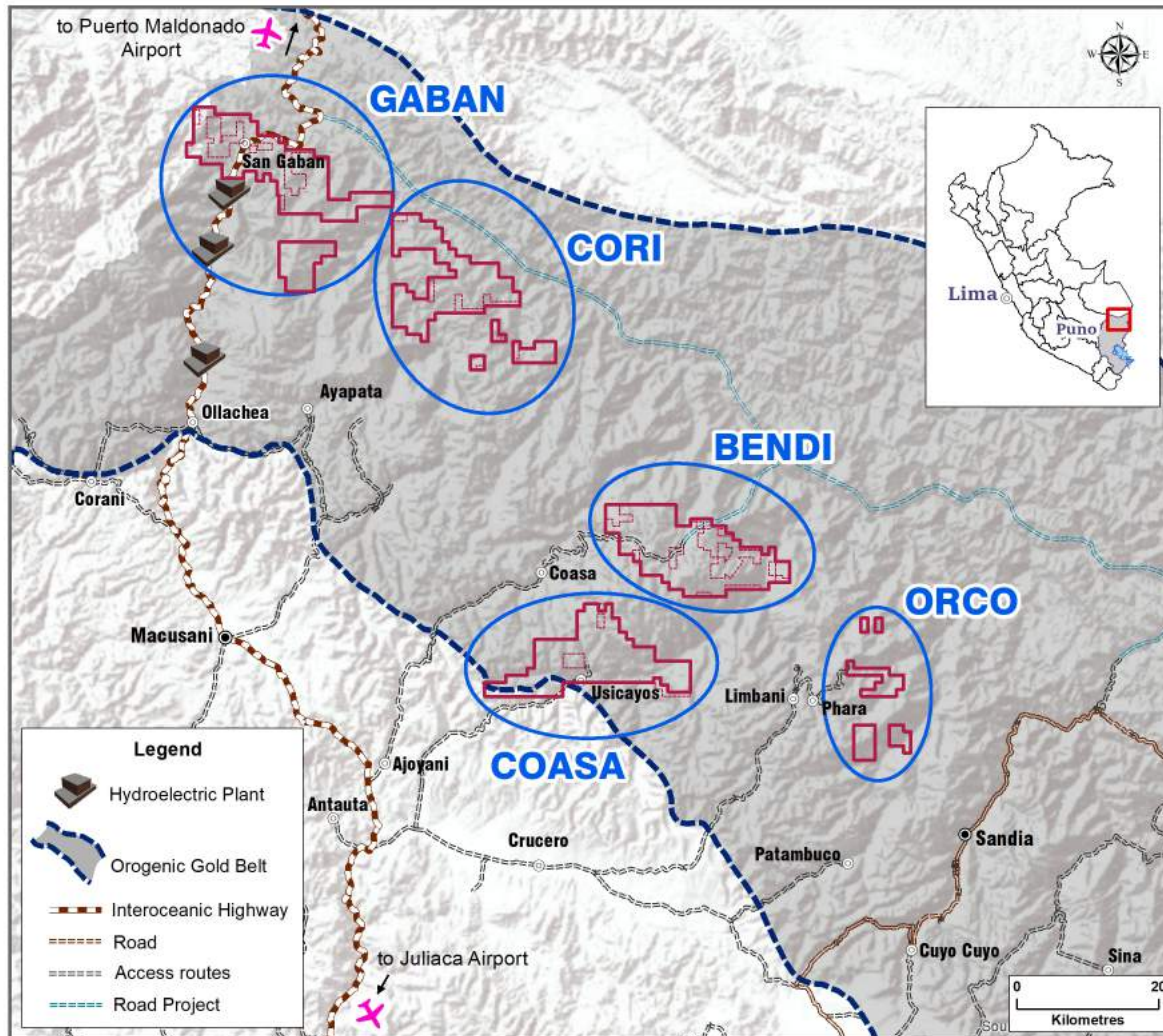
Women scavenging for gold at LA RINCONADA

Puno Orogenic Gold Belt



- **Puno Orogenic Gold Belt** (dark grey area)
175 x 75 km
- 76,912 hectares titled and under application
- Known POGB deposits extend >1,000 m depth mineralized structures >5 km in length
- Artisanal gold miners producing high grade gold at <100 m depth
- Little to no resource drilling; no systematic geological, geochemical or geophysical studies

Palamina Projects in POGB

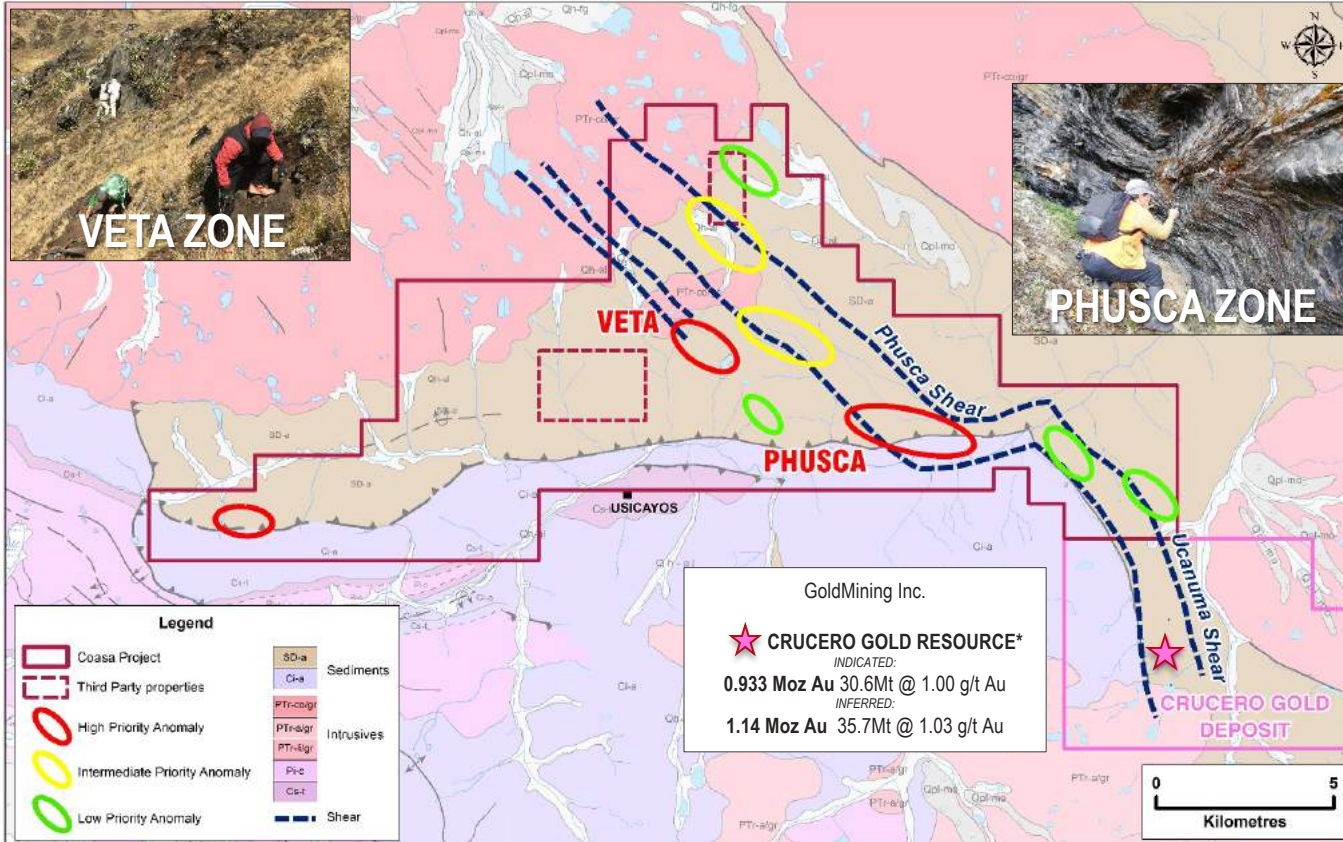


- District scale land positions secured with little to no competition in downturn of exploration in Peru
- New roads being built by government, informal, logging and mining groups
- New bridges, hydro-electric dams and power lines will assist in locating new major gold discoveries
- Shadow of head frame exploration where no head frame exists

Coasa Gold Project

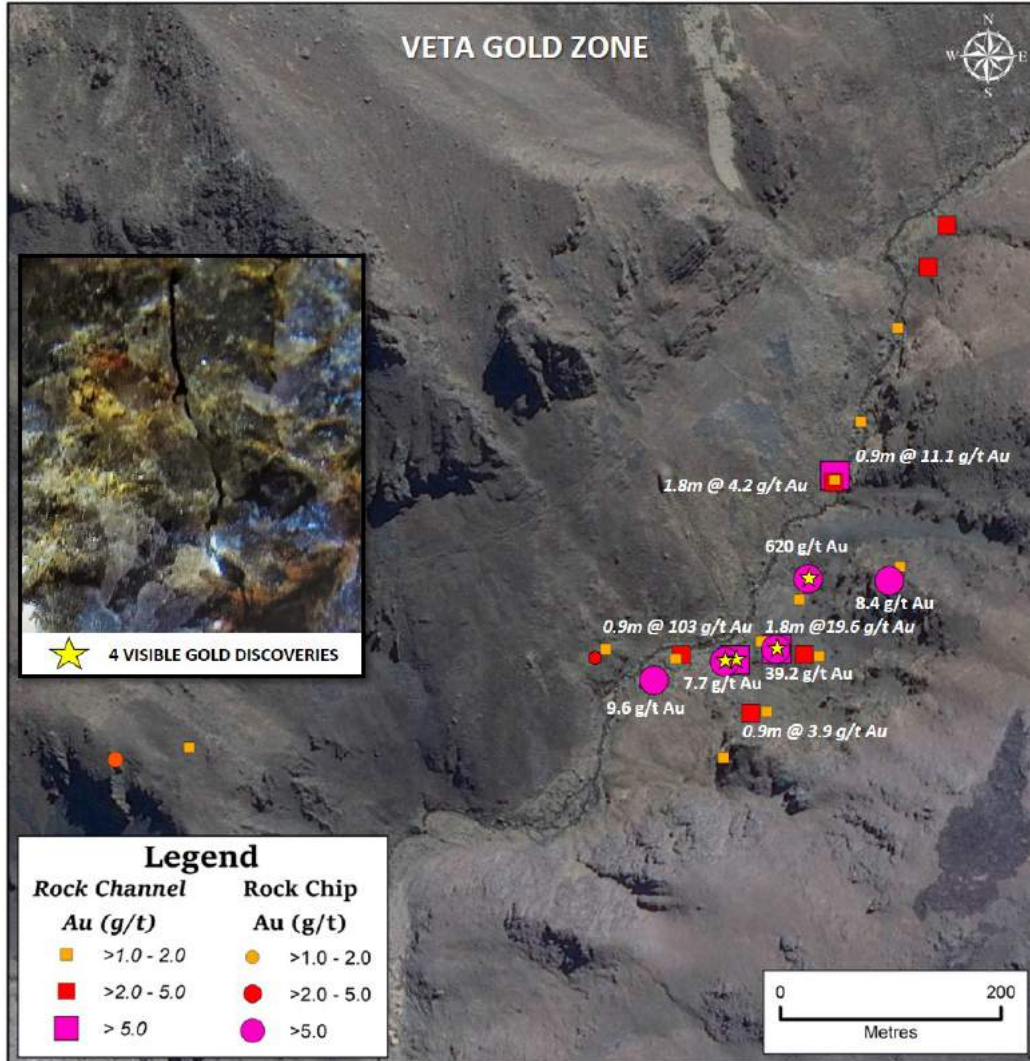


- 16,412 hectares titled & under application
- In 2018, Crucero purchased for \$5.7M
- Crucero affirmation of volume potential in NW shear structure
- The regional Shear Zone structure (Crucero) extends onto Coasa
- Shear Zone fault jog same structural feature as Ollachea
- Systematic exploration leads to Veta gold discovery with up to 620 g/t gold selective rock-chip sample



*January 16, 2018 – GoldMining Inc. “GoldMining Announces NI 43-101 Gold Resource for the Crucero Gold Project, Peru”

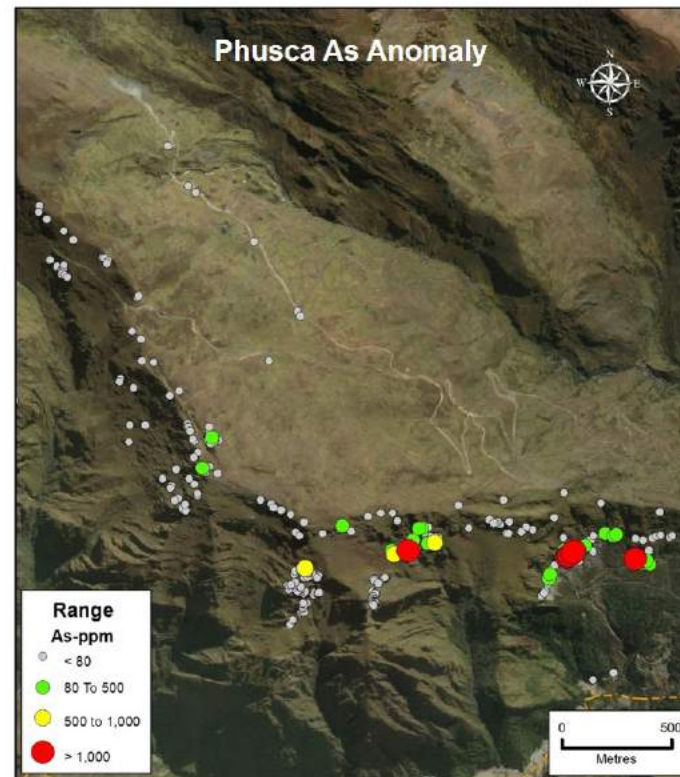
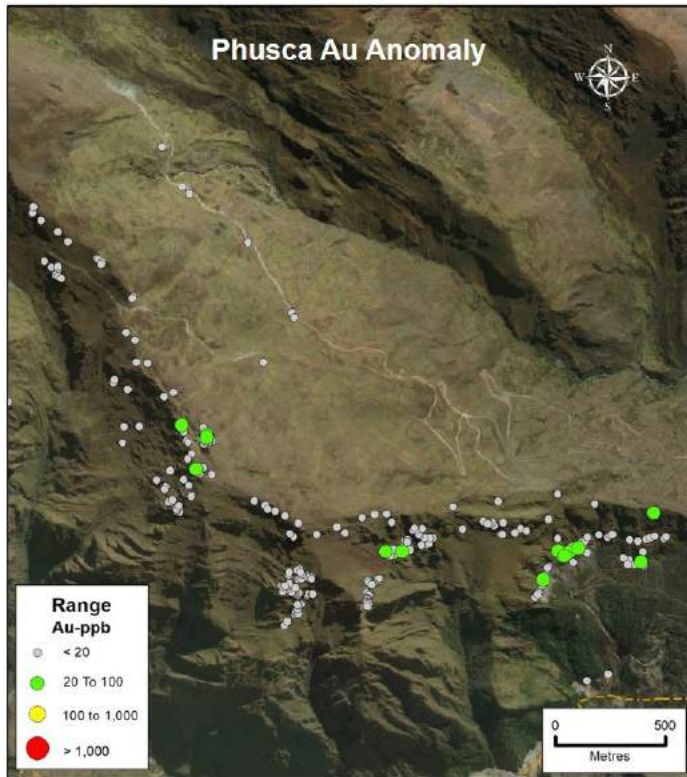
Veta Discovery Zone: 800 X 500 metres



- Four VG zones up to 620 g/t gold
- Slates mineralized:
1.8 metres @ 19.6 g/t gold
- NI 43-101 underway
- Drill permitting underway

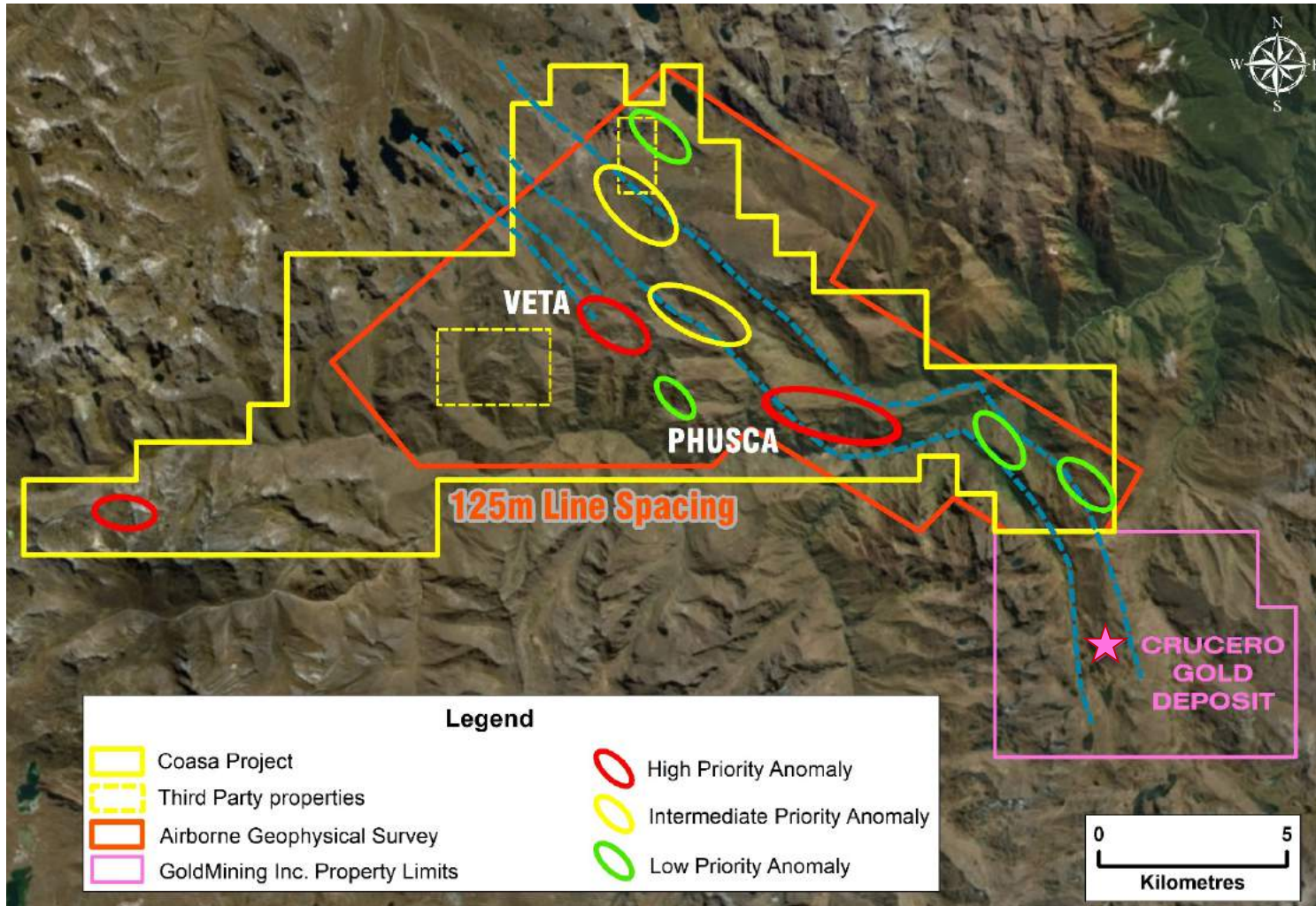
SAMPLE #	LOCATION	SAMPLE TYPE	METRES	GOLD g/t
2696	Veta	Rock-Chip	0.15	620
2542	Veta	Channel	0.9	103
2577	Veta	Channel	1.8	19.6
2605	Veta	Channel	0.9	11.1
2601	Veta	Channel	1.8	4.2
2599	Veta	Channel	0.9	3.9
2532	Veta	Channel	0.9	2.5
2629	Veta	Rock-Chip	0.2	2.4
2579	Veta	Channel	1.8	2.4
2668	Veta	Rock-Chip	0.15	2.1
2626	Veta	Channel	2.25	2.1
2531	Veta	Channel	0.9	1.9
2666	Veta	Channel	0.9	1.8
2658	Veta	Channel	1.8	1.6
2515	Veta	Channel	4.5	1.6
2545	Veta	Channel	0.9	1.5
2597	Veta	Channel	0.9	1.4
2568	Veta	Channel	1.8	1.4
2581	Veta	Channel	1.8	1.3
2602	Veta	Channel	0.9	1.2
2610	Veta	Channel	1.8	1.2
2604	Veta	Channel	0.9	1.2
2656	Veta	Channel	0.9	1.2

Principal Geochemical Associations

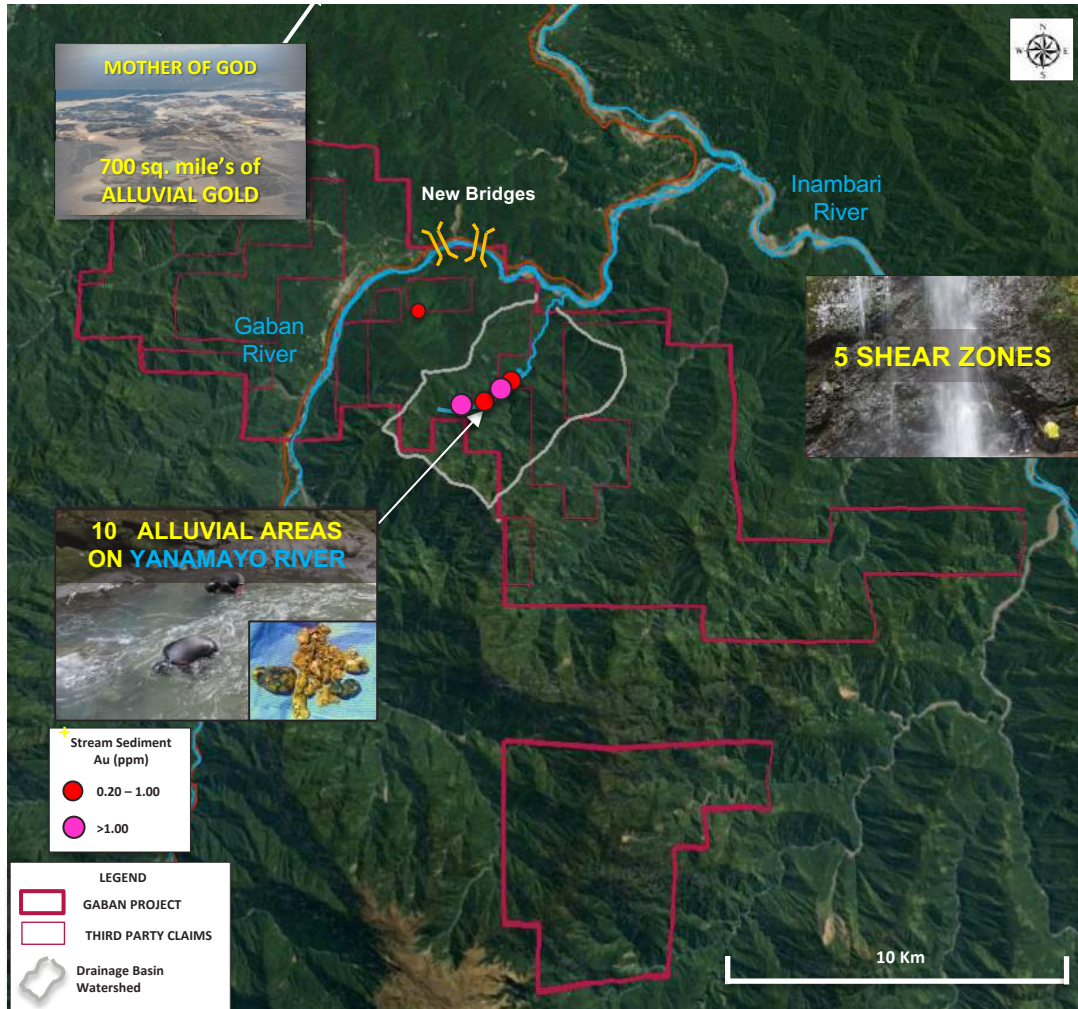


- Phusca Zone within east west trending structural jog zone
- Strong geochemical association between Gold and Arsenic values
- Similar structure & geochemical response as known gold deposits in the POGB

Coasa Airborne Survey Area

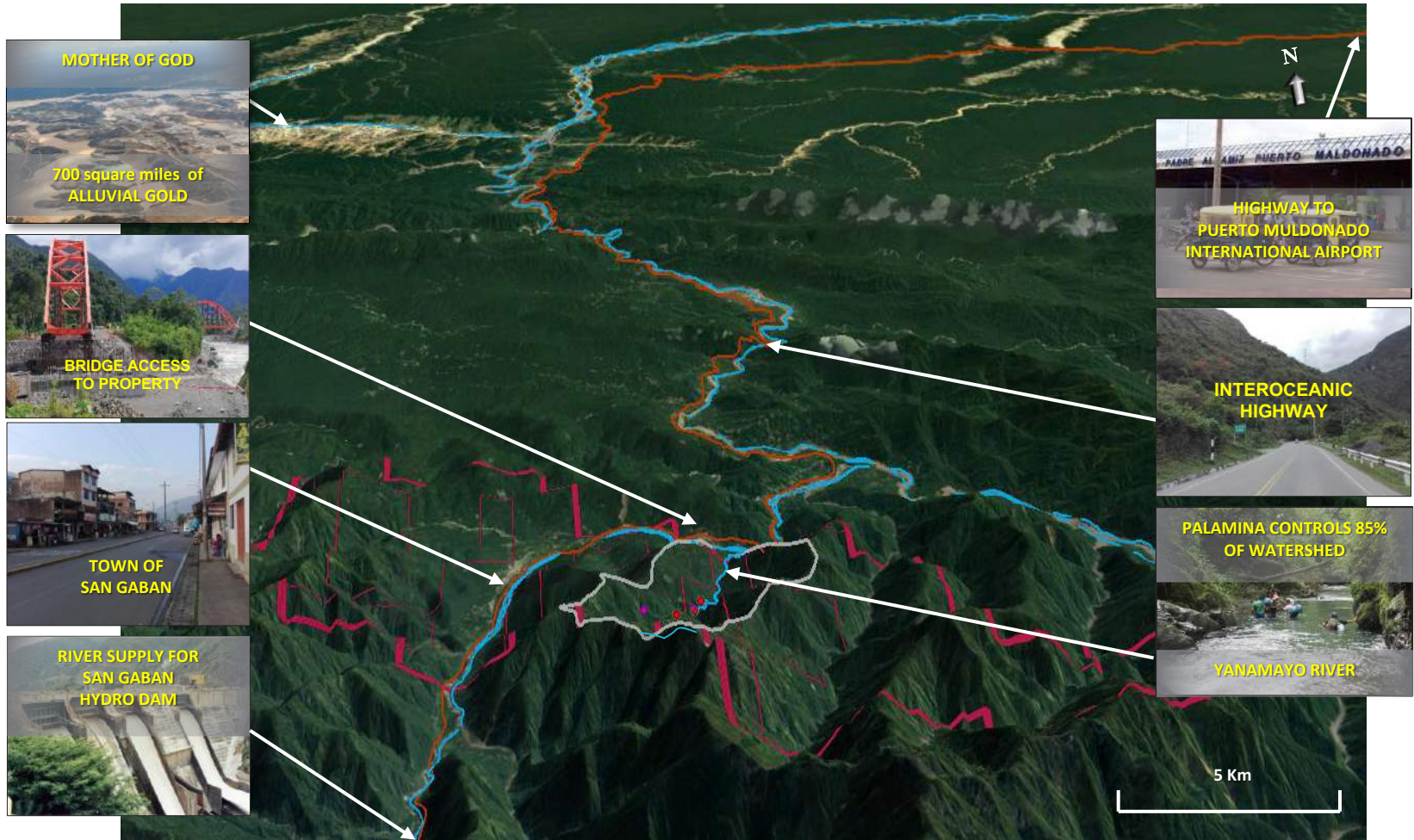


Gaban Gold Project



- 19,300 hectares titled & under application
- Yanamayo, Gaban & Inambari rivers are watershed to Mother of God alluvials
- Alluvial gold mined in 10 areas in Yanamayo River
- 85% of watershed mining rights controlled by PA
- Stream-sediment sampling at -60 mesh: 4.9 g/t gold
- Targeting shear zone structures as source: 5 identified to date
- Heli-borne survey completed to locate additional shear zone structures

Gaban Gold Project Infrastructure



Heli-borne Survey Area at Gaban/Cori

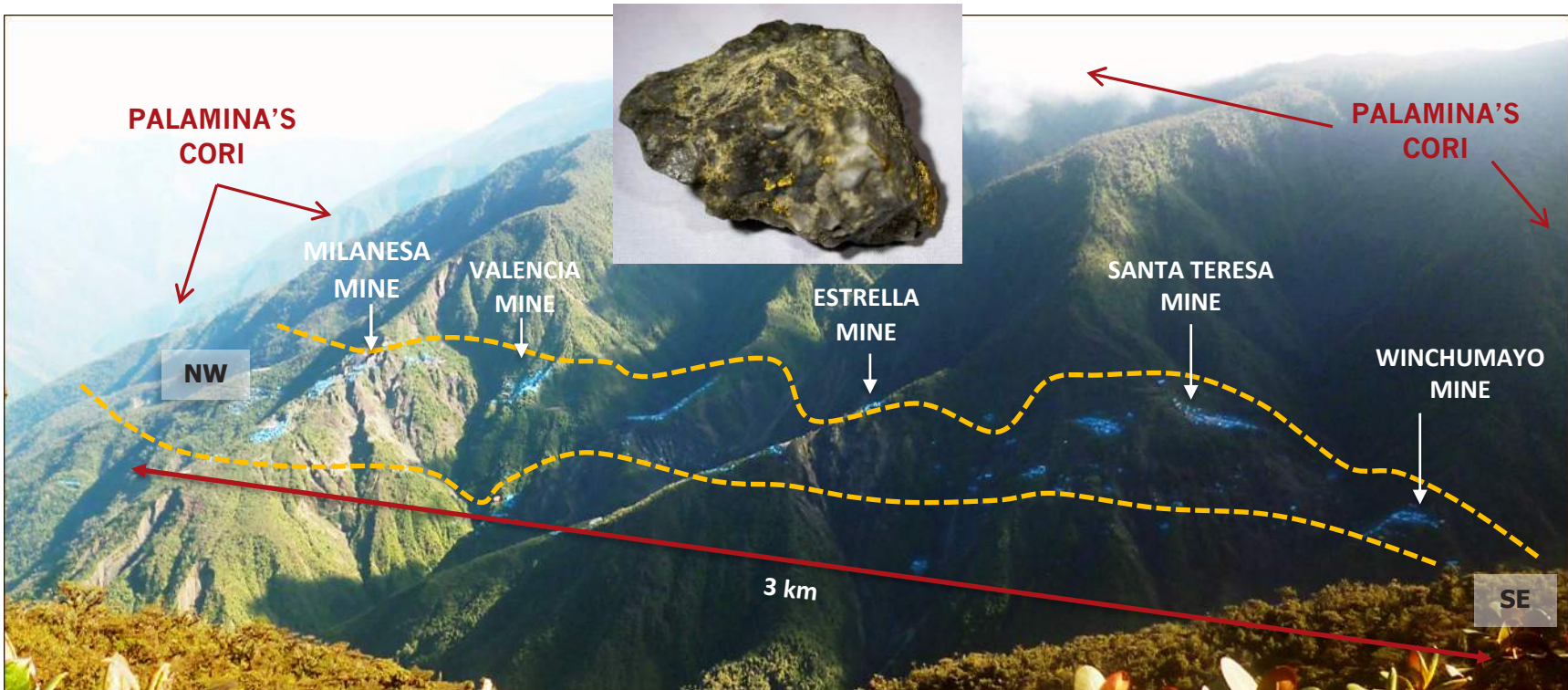


- Heli-borne survey completed in September 2018
- 125m line spacing coverage; PA controls 85% of mining rights to watershed over Yanamayo River Basin
- 250m line spacing covers Gaban east, west extensions
- 500m line spacing over Cori project to cover east, west and down dip extensions to 3km hard rock mining area
- Flight survey will increase understanding of shear structures driving alluvial and hard rock mining underway

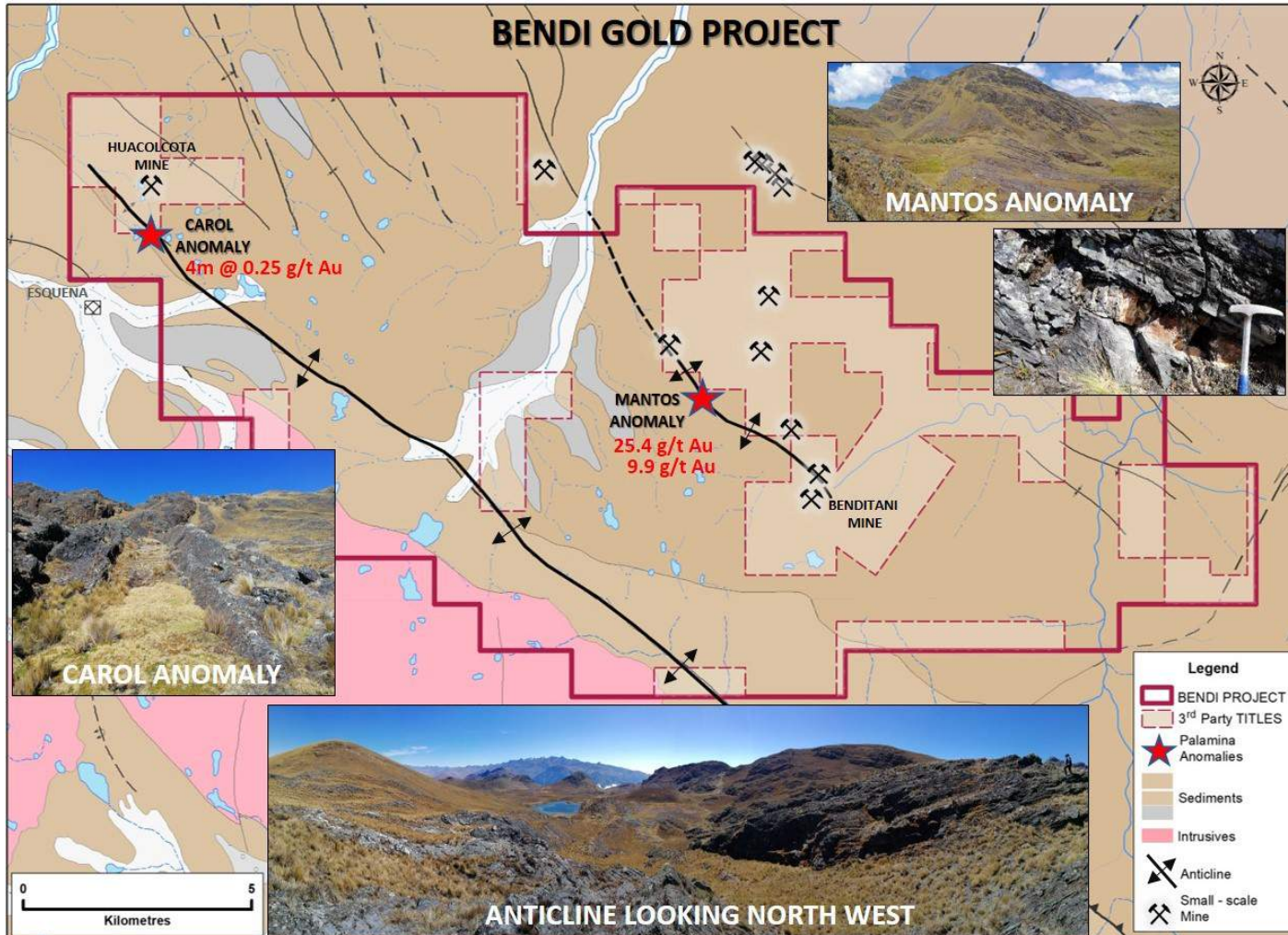
Cori Gold Project Mine Areas



**PALAMINA HOLDS 17,600 HECTARES TITLED & UNDER APPLICATION
1,200 INFORMALS MINING OVER 3 km, MAXIMUM 100 METRE MINING DEPTH,
PA STAKED ALONG STRIKE NW & SE AND DOWN-DIP EXTENSIONS ,
HELI-BORNE SURVEY AT 500M LINE SPACINGS**



Bendi Gold Project



- 18,900 hectares titled & under application
- Numerous small scale gold mines
- Visible Gold identified off property: PA stakes extension
- Newly defined gold zones extending up to 7 km in length relating to anticline

Bendi Gold Project Shear Zones



Extensive sheeted quartz veining

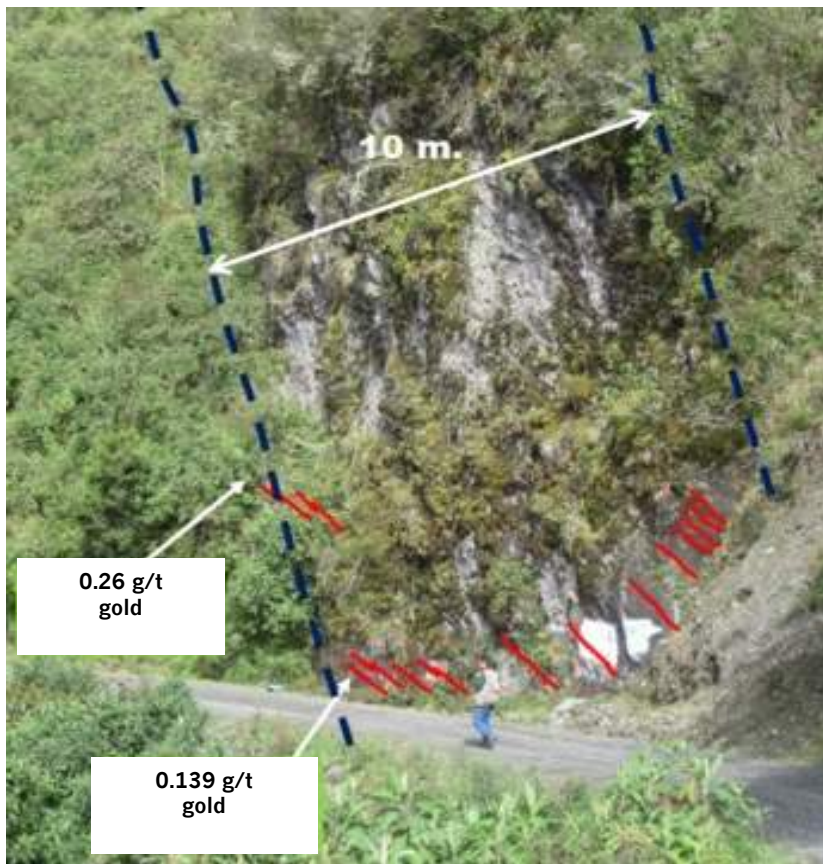


Mineralized shear-zone



Quartz - FeO structure near Benditani mine

Orco Gold Project

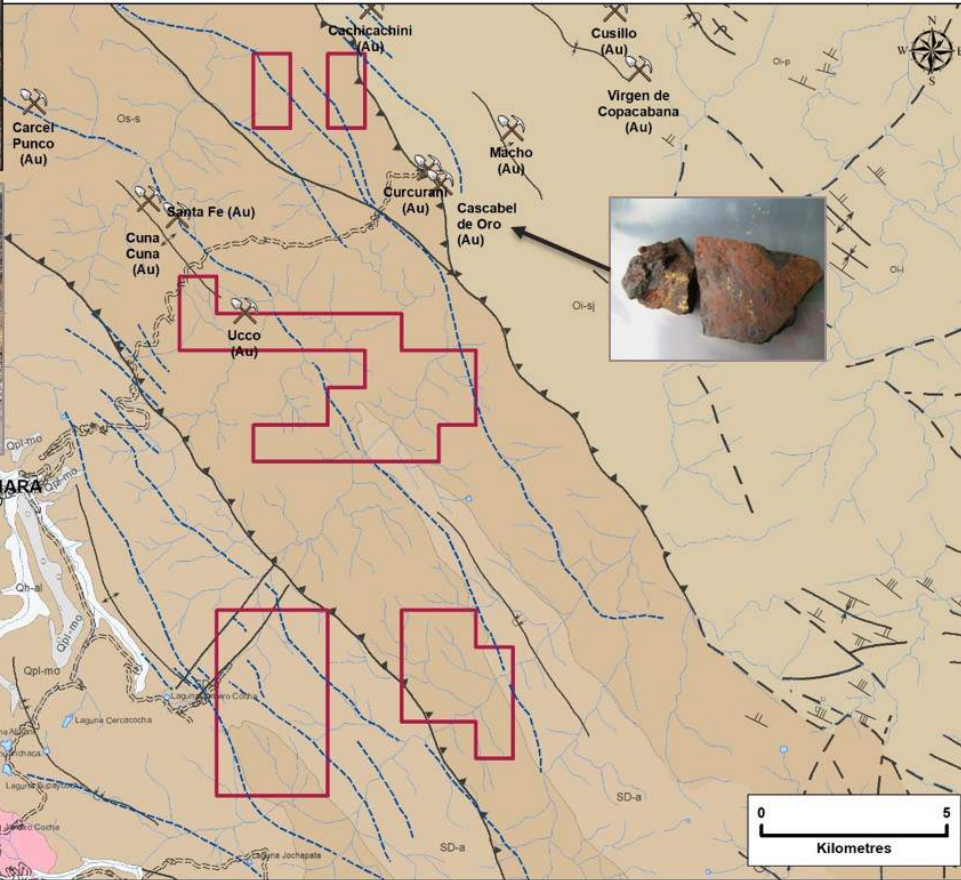


ORCO SHEAR ZONE DEFORMED QUARTZ VEINLETS

- 4,700 hectares titled & under application
- Structurally prepared 10m wide shear zone hosting deformed quartz veinlets containing anomalous gold up to 0.26 g/t.
- >15 active artisanal gold mines
- Ground will be staked as comes open, competitive mining area



Orco Gold Project



- Limited sampling; anomalous results
- Peñoles Capac Orcco non-NI43-101 compliant 1.5Moz gold resource
- Artisanal mining areas include Curcurani, Cascabel de Oro, Santa Fe, Cuna Cuna
- Buy and hold strategy while exploring balance of portfolio

A New Stable



- **Palamina acquires 5 gold projects in Puno Orogenic Gold Belt** in south eastern Peru
- POGB one of worlds least formally explored orogenic gold belts
- **Modern day Gold Rush underway / ground-truthed by informals**
- **Palamina visited and prioritized Peruvian projects in 2017**
- No drilling has ever been carried out on any of Palamina's projects
- **Palamina begins systematic exploration of POGB projects in 2018**
- **Palamina systematic exploration discovers Veta Gold Zone at Coasa**
- Palamina completes +3,000 line km Heli-borne geophysical survey
- **Comprehensive drill permitting and NI 43-101 compliant technical report underway at Coasa**



Eyes on the ground !