



**PALAMINA**  
**CORP.**

**PDAC - MARCH 2019**

# Disclaimer

---



This presentation contains projections and forward looking information that involve various risks and uncertainties regarding future events. Such forward-looking information can include without limitation statements based on current expectations involving a number of risks and uncertainties and are not guarantees of future performance of the Corporation. These risks and uncertainties could cause actual results and the Corporation's plans and objectives to differ materially from those expressed in the forward looking information. Actual results and future events could differ materially from anticipated in such information. These and all subsequent written and oral forward-looking information are based on estimates and opinions of management on the dates they are made and expressly qualified in their entirety by this notice. The Corporation assumes no obligation to update forward-looking information should circumstances or management's estimates or opinions change.

The technical and scientific information included herein has been reviewed and approved by Mr. Alistair Waddell, B,Sc (HONS), a Member of the Australian Institute of Mining and Metallurgy (MAusIMM), a director of Palamina Corp., and a qualified person under National Instrument 43-101 of the Canadian Securities Administrators.

# Proven Discovery Path

---



- Palamina established gold focus in Peru in 2016 ✓
- Acquired in-country geological exploration team with significant experience in Puno Orogenic Gold Belt (“POGB”) ✓
- Palamina has secured 5 district scale gold projects in POGB ✓
- Systematic exploration programs now underway ✓
- Palamina completes +3,000 line km heli-borne survey ✓
- New gold discoveries - Coasa emerging as flagship project ✓

*“Shadow of head frame exploration **without the head frame**”*

# Directors, Management & Advisory Board



*Proven track record of discovery and development*



Andrew Thomson  
**President  
Director**



Hugh Agro  
*B.Sc. M.B.A.*  
**Director**



Alistair Waddell  
*B.Sc.(Hons), MAusIMM*  
**Director**



Darin Wagner  
*P.Geo*  
**Director**



Brian Jennings,  
*CA, B.Sc.*  
**Chief Financial Officer**



Yury Valdivieso  
*M.Sc.*  
**Exploration Manager**



Jose Vizquerra-Benavides  
*M.Sc.*  
**Advisory Board**



Douglas Reeson,  
*M.B.A.*  
**Advisory Board**



Phillip Walford  
*B.Sc., P.Geo.*  
**Advisory Board**

***“Palamina’s team has raised +\$50M  
& defined +7M oz gold in the last 2 years”***

# Palamina Capital Structure



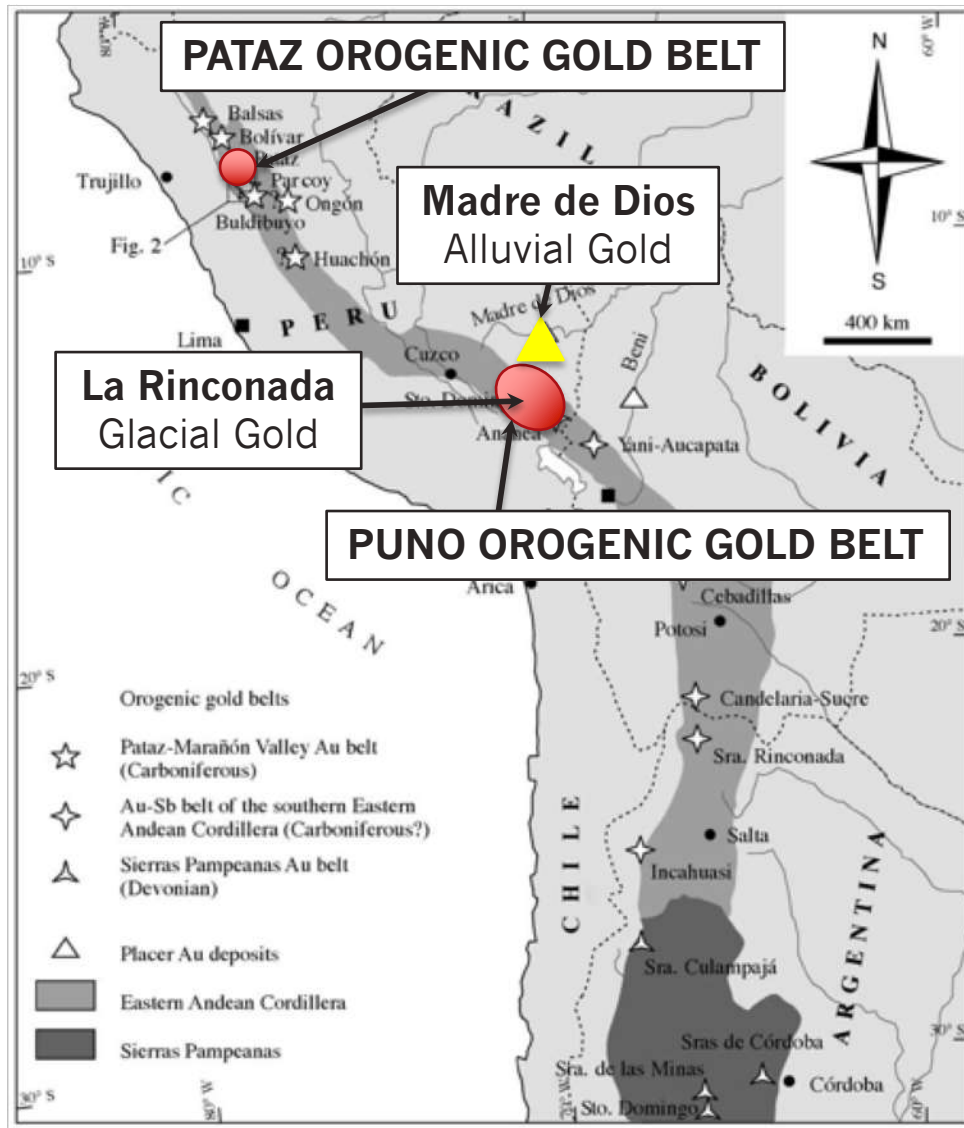
SHARES OUTSTANDING	35,721,303
OPTIONS	2,055,000
WARRANTS	12,284,999
SHARES FULLY DILUTED	50,061,302

WORKING CAPITAL	\$ 1,500,000
-----------------	--------------

MAJOR SHAREHOLDERS	
ERNESTO ECHAVARRIA	9.3 %
ANDREW THOMSON – PRESIDENT PA	9.8 %
OTHER DIRECTORS & MANAGEMENT	3 %



# Why South Eastern Peru?



- Orogenic gold belt extends +3,400 km from N Peru - through Bolivia - to N Argentina
- Pataz area reportedly produced over 40 million ounces gold
- **The Puno Orogenic Gold Belt** is the southern-most portion of the belt and reportedly produced; **168,000 ounces of Au in 2016**
- **Madre de Dios** alluvial deposits reportedly produced; **500,000 ounces of Au in 2016**
- Ground-truthed by informal and artisanal miners with little to no systematic mining or drilling to test depth or strike potential.
- **Large quantity of gold unreported and traded illegally through Bolivia**

# Modern Day GOLD RUSH in POGB



## Puno Orogenic Gold Belt

Puno orogenic gold deposits are geologically similar to those in eastern Canada & Venezuela. In POGB, gold typically occurs as free gold in sediments and quartz veins

More than 700 sq. km's of jungle deforestation due to 30,000 informals ***alluvial gold mining*** at **MADRE DE DIOS**

Known regional structures hosting gold mineralization in the Puno gold belt are >5 km in length with mineralized widths ranging from 0.2 m to >50.0 m

Approximately 30,000 informal miners at >5,000 m elevation ***orogenic + alluvial gold mining*** at **LA RINCONADA**

Widespread informal and artisanal miners working & ground-truthing high-grade gold at <100 m below surface

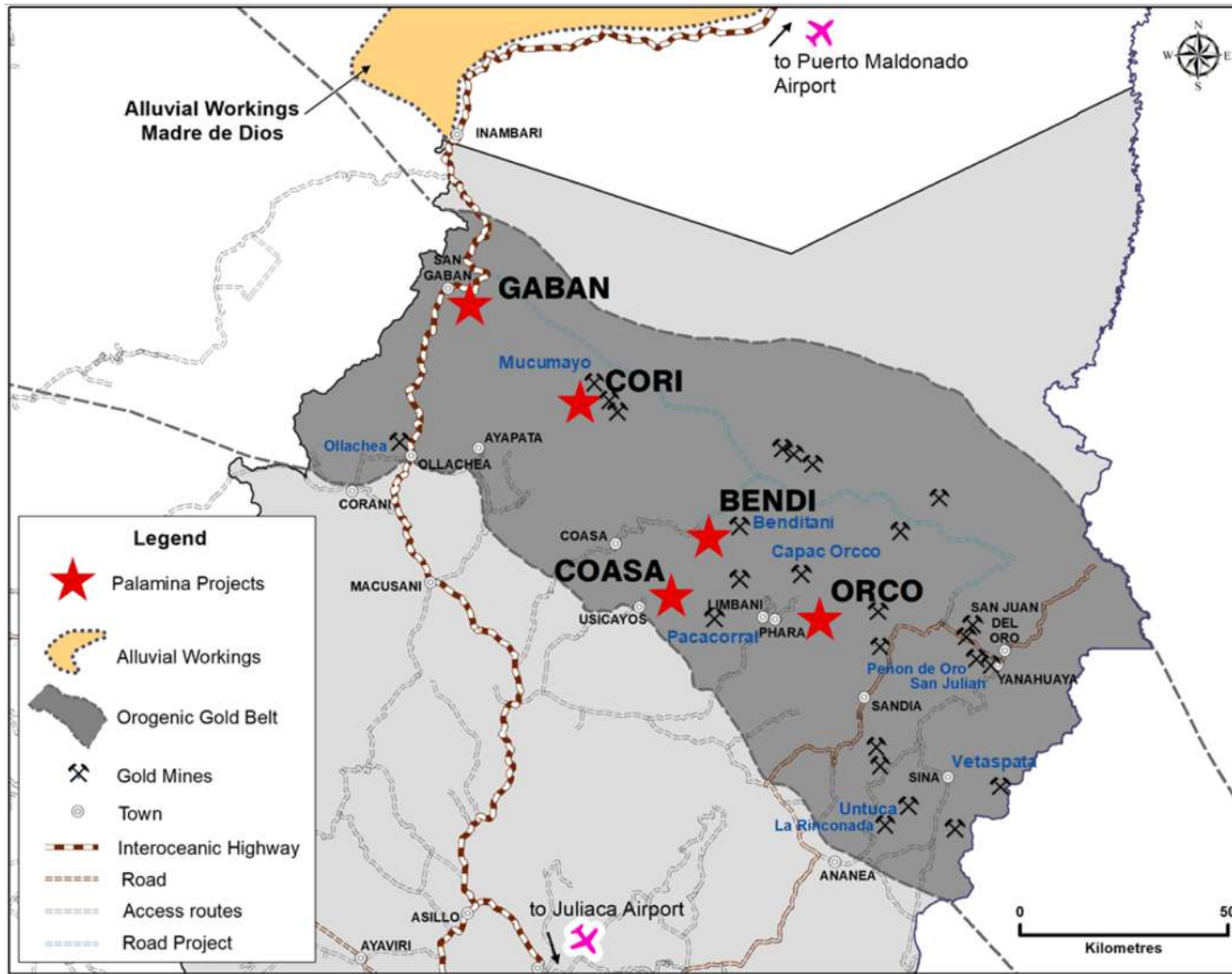


Artisanal alluvial mining at MADRE DE DIOS



Women scavenging for gold at LA RINCONADA

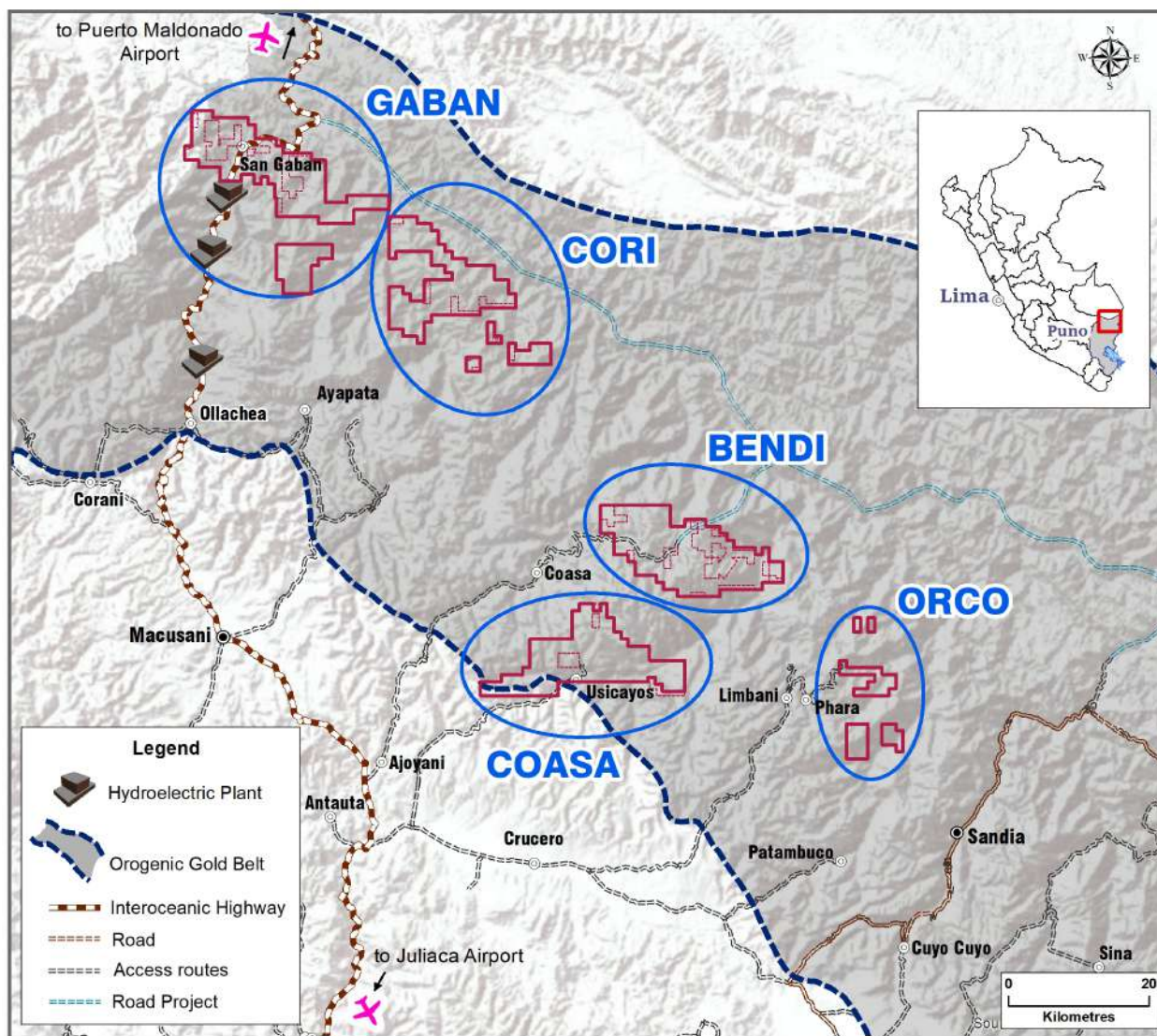
# Puno Orogenic Gold Belt



- **Puno Orogenic Gold Belt** (dark grey) 175 x 75 km
- 74,400 hectares titled and under application
- Known POGB deposits extend >1,000 m depth mineralized structures >5 km in length
- Artisanal gold miners producing high grade gold at <100 m depth
- Little to no resource drilling or systematic geological, geochemical or geophysical studies

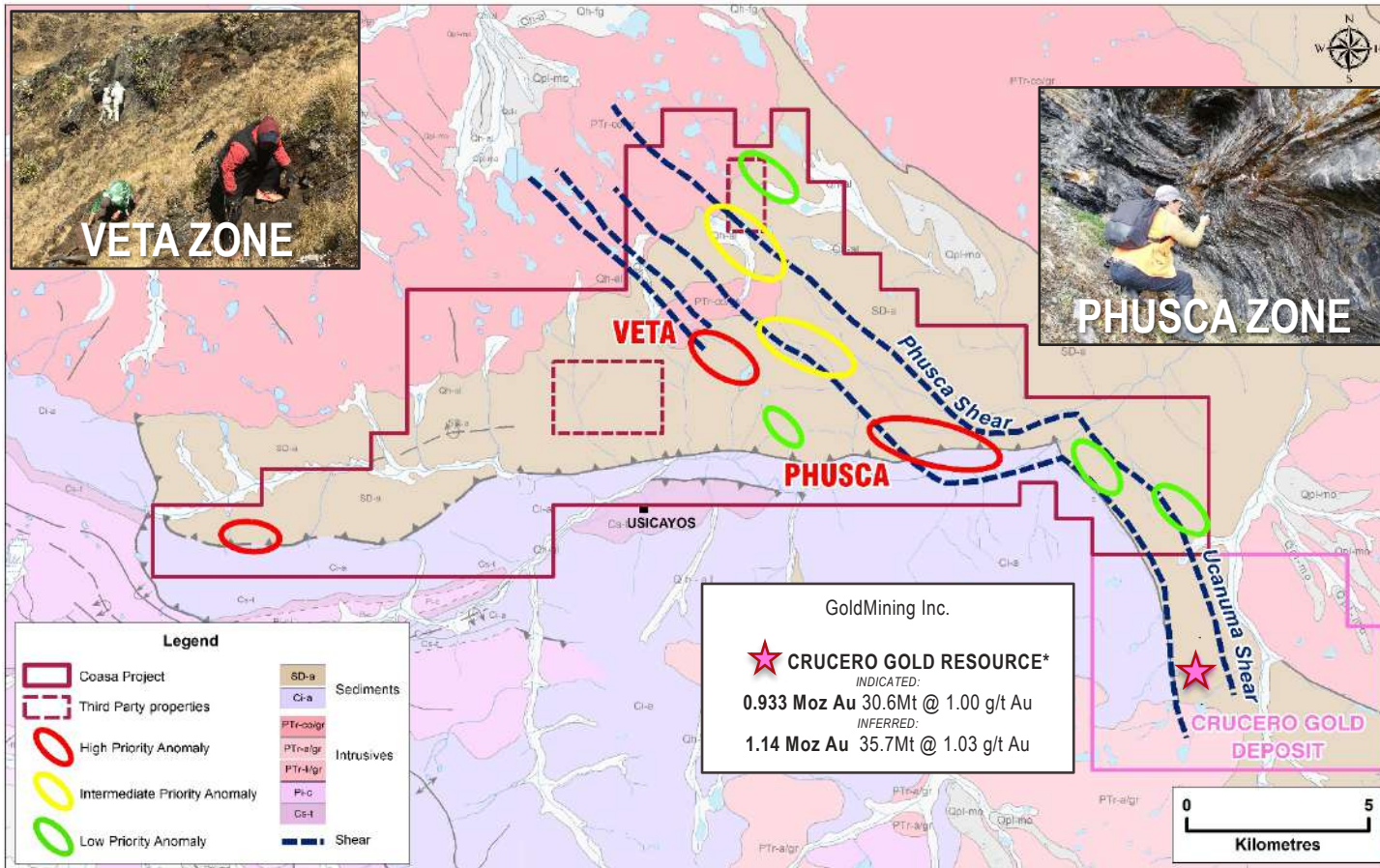


# Palamina Projects in POGB



- District scale land positions secured with little to no competition in downturn of exploration in Peru
- New roads being built by government, informal, logging and other mining groups
- New bridges, hydro-electric dams and power lines will assist in locating new major gold discoveries
- Shadow of head frame exploration where no head frame exists

# Coasa Gold Project

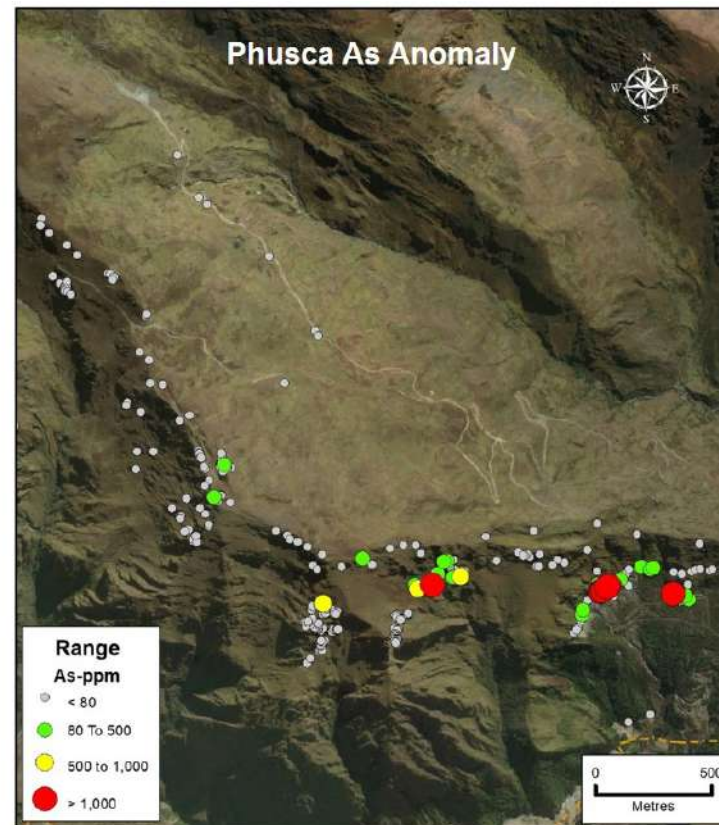
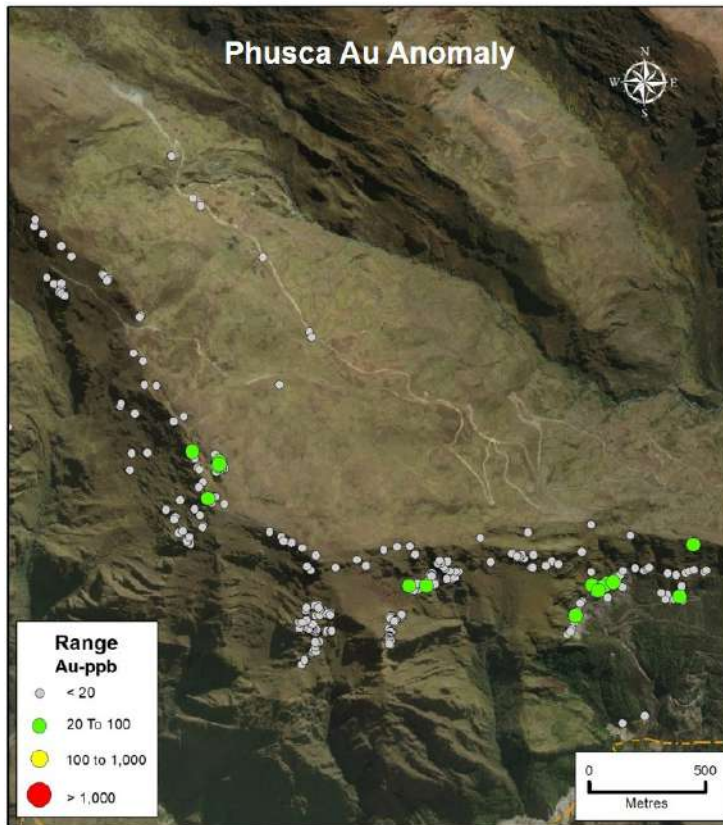


\*January 16, 2018 – GoldMining Inc. “GoldMining Announces NI 43-101 Gold Resource for the Crucero Gold Project, Peru”  
 \*Selective rock-chip & channel samples do not fully represent the mineralization hosted on the property

- 17,100 hectares titled & under application
- GoldMining’s Crucero gold deposit affirms volume potential in NW shear structure
- NW shear extends through Coasa Property
- 9 mineralized zones identified & prioritized to date
- Veta Zone rock-chip sampling<sup>+</sup> returns up to **620 g/t gold**
- Cayos Zone channel sampling<sup>+</sup> returns up to **3m @ 30.5 gpt gold**

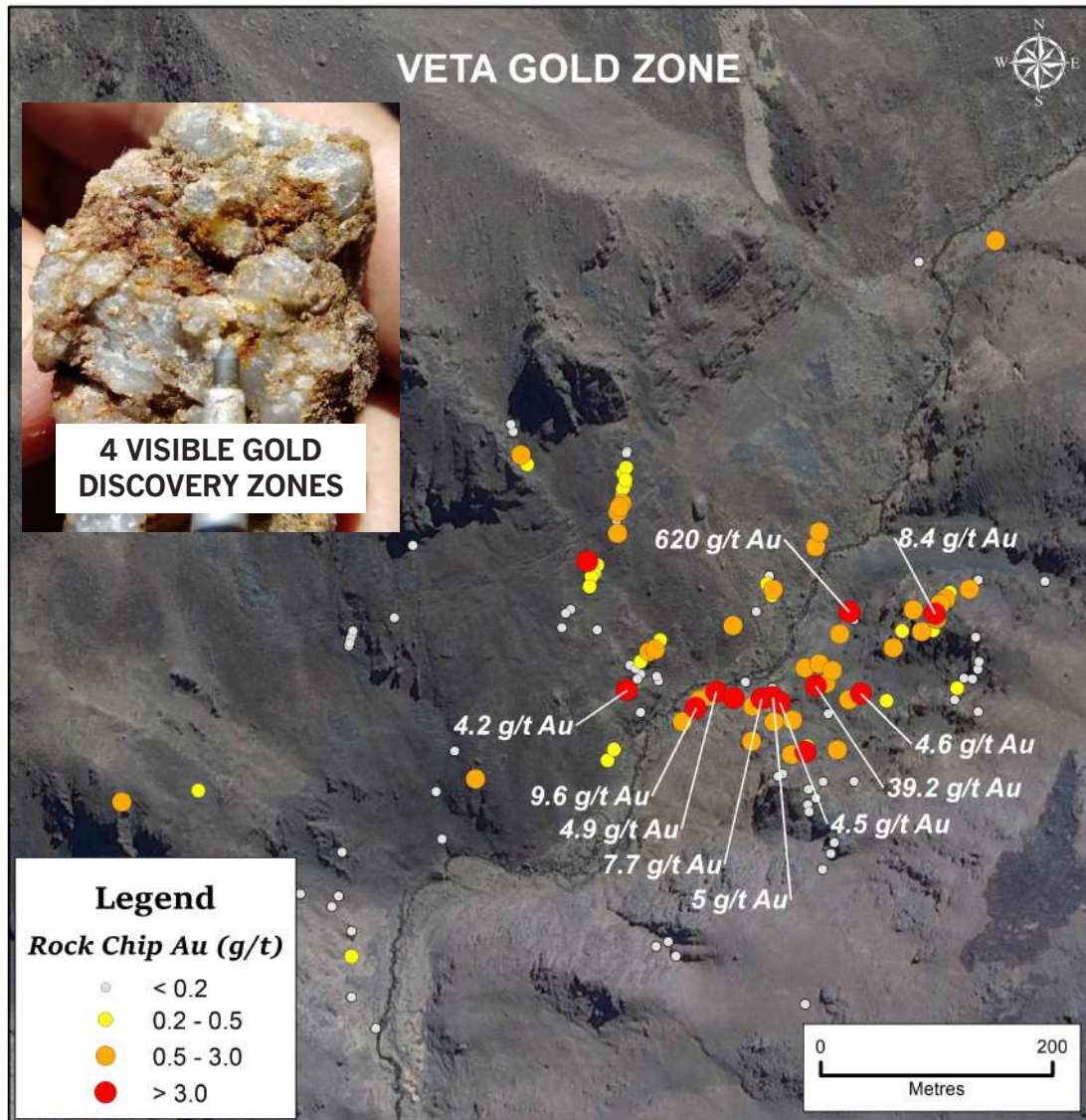


# Principal Geochemical Associations



- Phusca Zone within east west trending structural jog zone
- Strong geochemical association between Gold and Arsenic values
- Similar structure & geochemical response as known gold deposits in the POGB

# Veta Discovery Zone Chip Samples



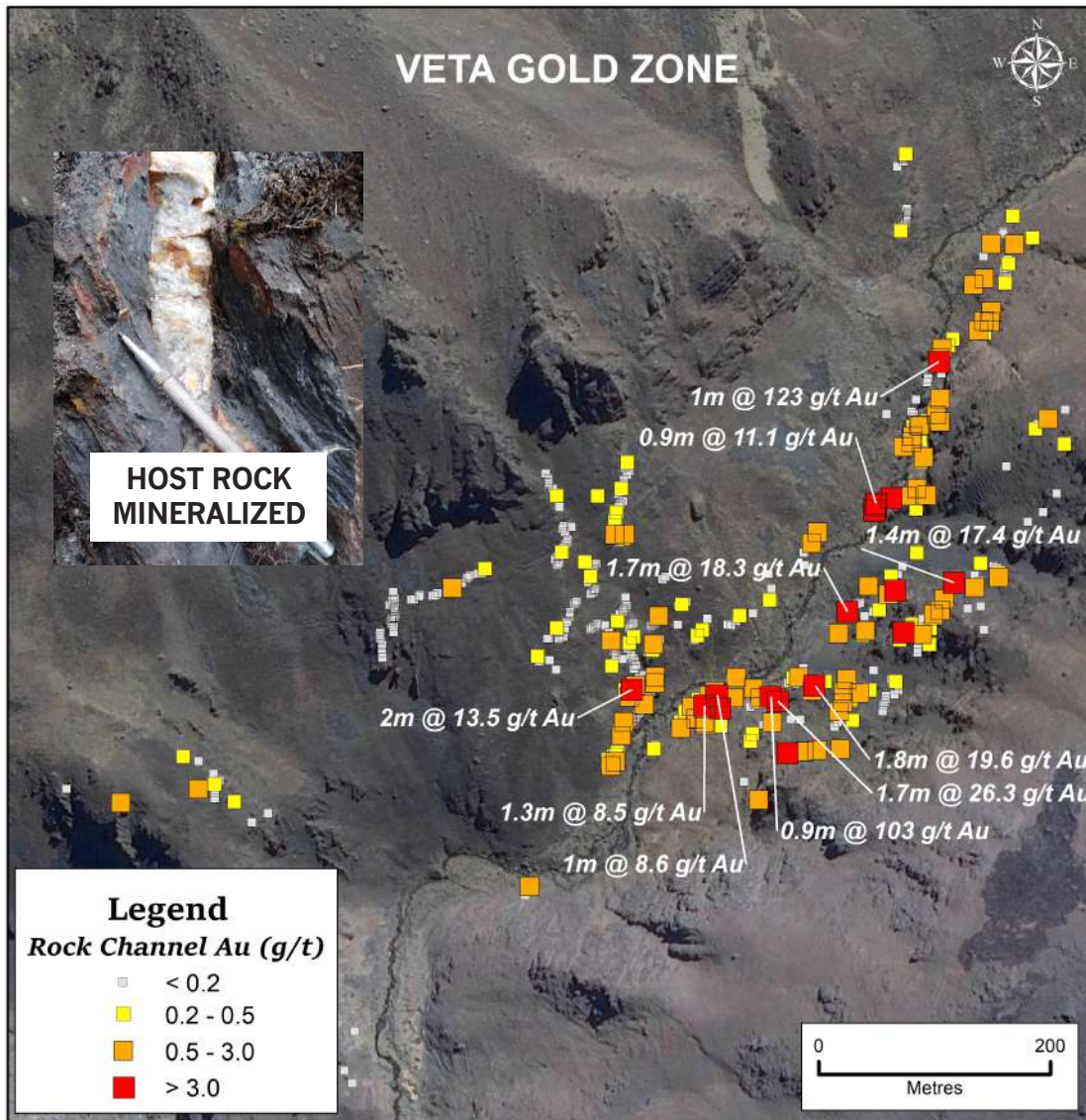
- Veta Zone represents new gold discovery / never mined
- Four VG zones, up to 620 g/t gold
- 10 chip samples + with highest values (represented on map):

SAMPLE #	ZONE	SAMPLE TYPE	LENGTH (METRES)	Au (g/t)
2696	Veta	Rock-Chip	0.15	620
1324	Veta	Rock-Chip	Grab	39.2
1299	Veta	Rock-Chip	Grab	9.6
1342	Veta	Rock-Chip	0.5	8.4
1276	Veta	Rock-Chip	Grab	7.7
1330	Veta	Rock-Chip	Grab	5.0
1297	Veta	Rock-Chip	Grab	5.0
1329	Veta	Rock-Chip	1.0	4.6
1323	Veta	Rock-Chip	Grab	4.5
1360	Veta	Rock-Chip	7.0	4.2

- Mineralized zone extends 600 by 800 metres



# Veta Discovery Zone Channel Samples

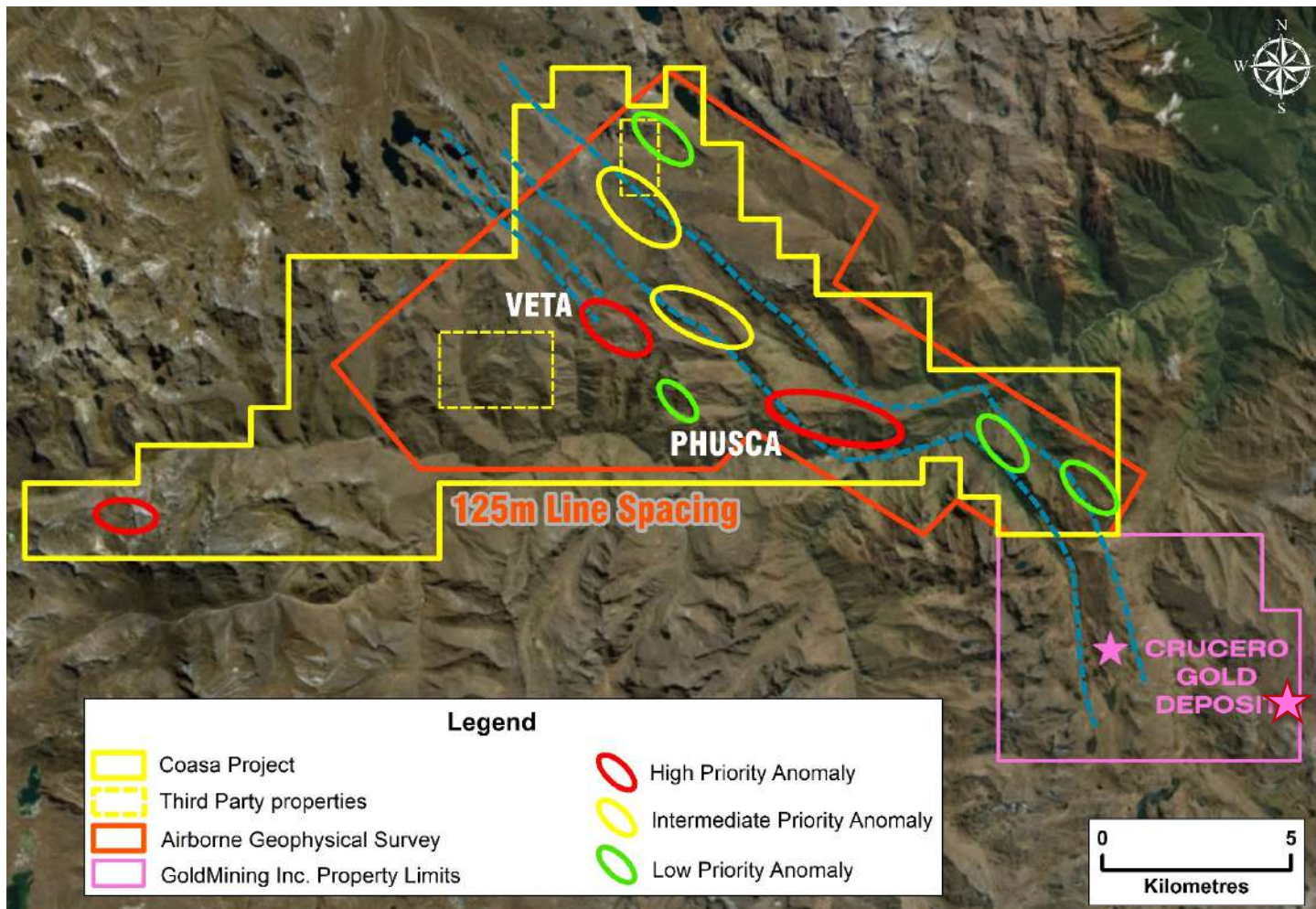


- Channel sampling demonstrates gold mineralization within the shale and siltstone host rocks.
- 10 channel samples with highest values (represented on map):

SAMPLE #	ZONE	SAMPLE TYPE	LENGTH (METRES)	Au (g/t)
2954	Veta	Channel	1.0	123
2542	Veta	Channel	0.9	103
3391	Veta	Channel	1.7	26.3
2577	Veta	Channel	1.8	19.6
3448	Veta	Channel	1.7	18.3
3371	Veta	Channel	1.4	17.4
3459	Veta	Channel	2.0	13.5
2605	Veta	Channel	0.9	11.1
3708	Veta	Channel	1.0	8.6
3418	Veta	Channel	1.3	8.5

- The system remains open-ended with DIA permitting submitted for first pass trenching and drilling.
- 2,500 metre drill program planned for 2019

# Coasa Airborne Survey Area



- In the POGB gold is often associated with pyrrhotite. Magnetic surveys useful tool to identify structure
- **A 1,028 line km heli-borne survey** completed at Coasa
- NI 43-101 report filed on Coasa
- Structural Geology report completed
- DIA ( Environmental Impact Declaration ) submitted to trench & conduct 2,500m drill program



# Community Relations



**EMPRESA Y COMUNIDAD:  
RESPONSABILIDAD  
SOCIOAMBIENTAL Y MINERA**

**CERO CORRUPCION  
100% TRANSPARENCIA**



- 100% transparency and zero corruption is PA's main message
- PA runs radio ads inviting locals to town meetings to discuss PA's role in their community
- PA employs & trains locals to assist in field / fostering long term relationships
- Coasa made up of highland Quechuan people / PA's Quechuan speaking engineer liaisons directly with the community
- PA participates in community events (booth at local fair handing out food packages, Xmas gift packages) providing written informative hand-outs / engaged community

**PILARES DE LA MINERIA RESPONSABLEMENTE**

**PERU, PAIS MINERO  
PROGRESO PARA TODOS**

Palamina S.A.C.

**RESPONSABILIDAD SOCIOAMBIENTAL Y MINERA**

**POLITICA SOCIAL  
APOYO SEGUN ETAPA DE EXPLORACION MINERA "CERO CORRUPCION"**

Propósito: **Alcanzar Social**

Etapas de Exploración Minera:

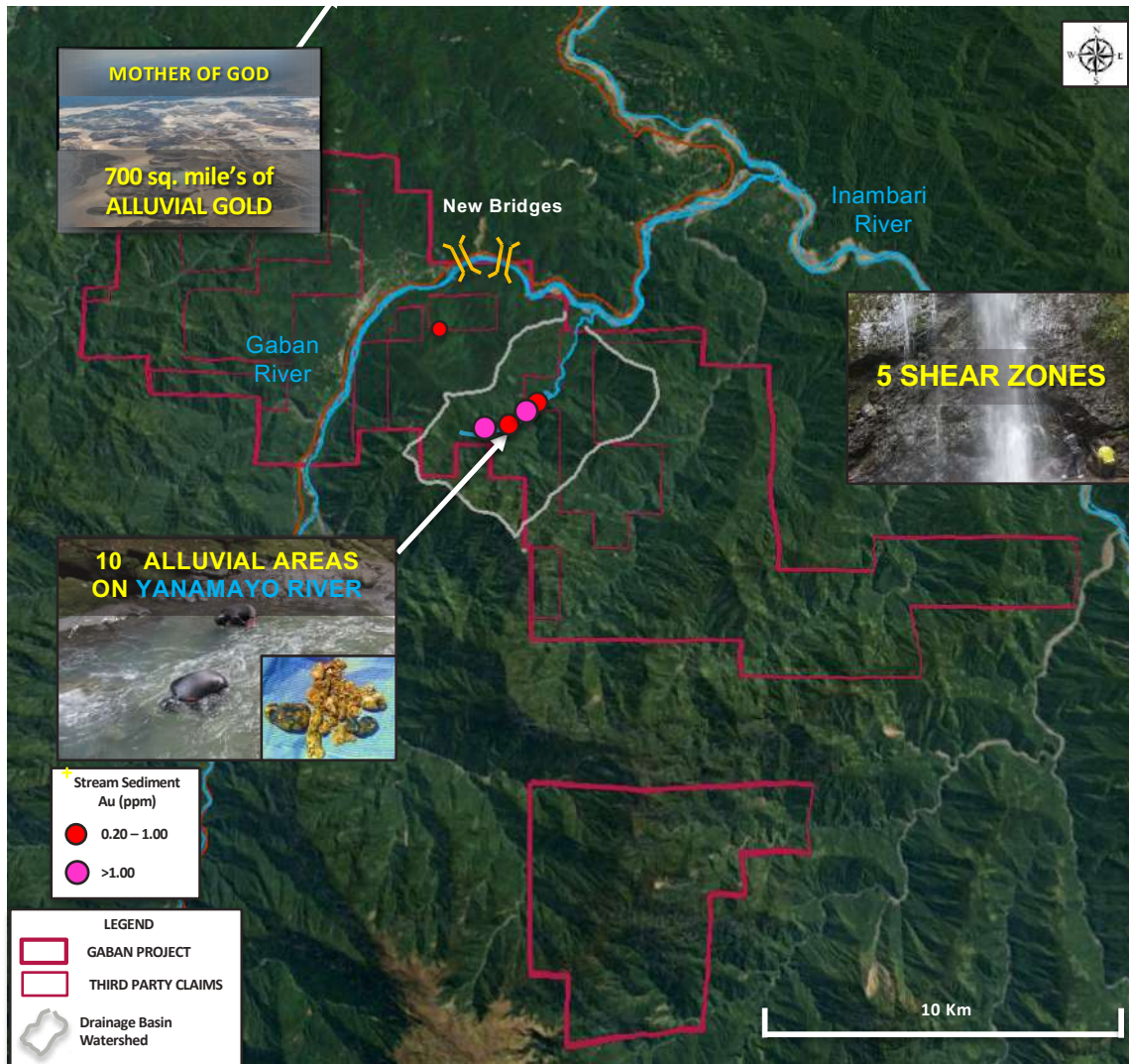
EXPLORACION VS EXPLORACION

En todos los trabajos participan las comunidades!

¡Casi todo el dinero del CANON MINERO DE CAHABANA proviene de la mina "San Rafael"!



# Gaban Gold Project

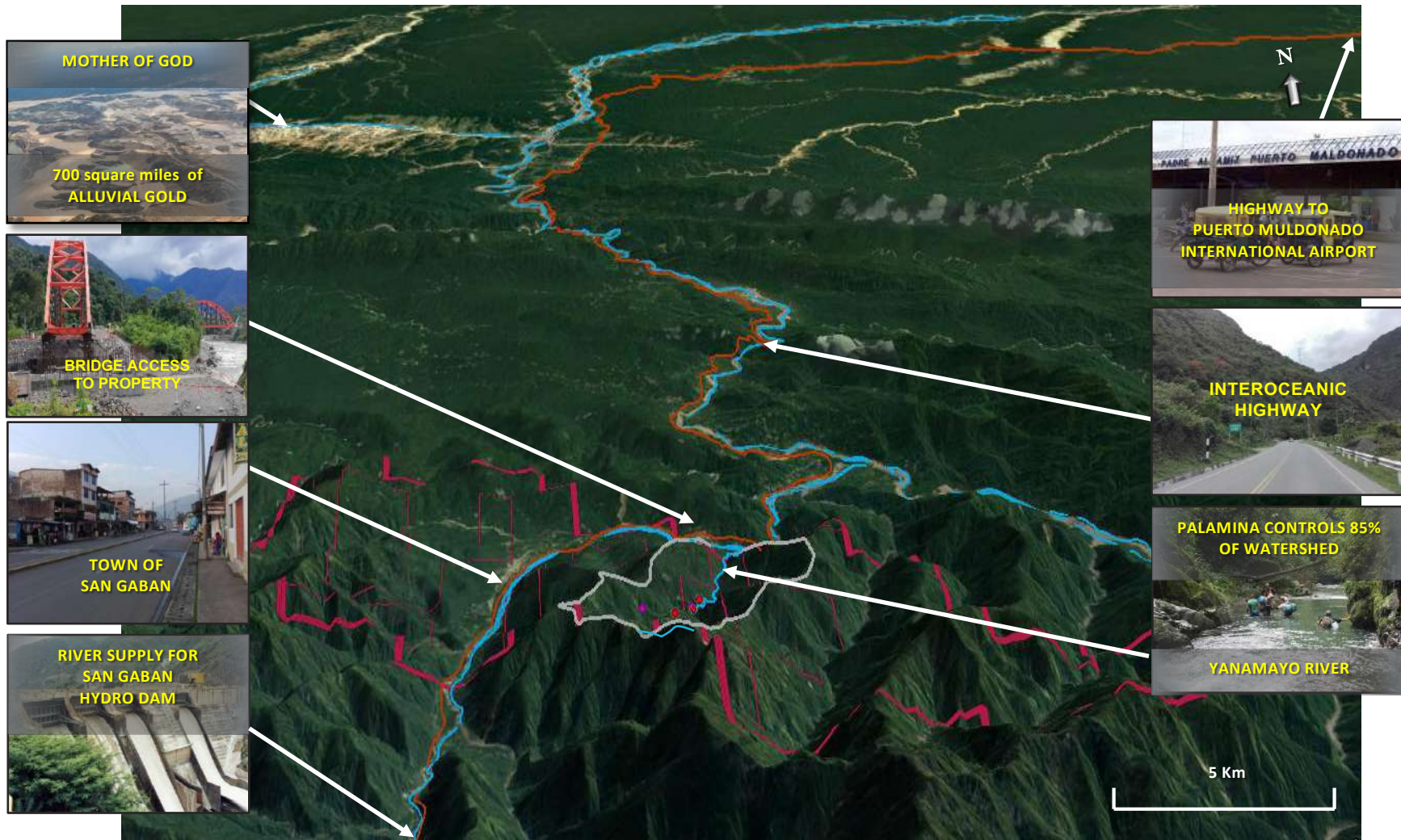


\*Map & text highlight only selective stream-sediment & channel samples which do not fully represent all mineralisation and sampling completed on the property.

- 19,300 hectares titled & under application
- Yanamayo, Gaban & Inambari rivers watershed to Mother of God alluvials
- Alluvial gold mined at 10 areas in Yanamayo River
- Approximately 85% of watershed mining rights controlled by PA
- Stream-sediment sampling<sup>+</sup> at -60 mesh returned up to 4.9 g/t gold
- 5 shear zone structures identified to date
- Aurifera shear zone channel sample<sup>+</sup>: 0.15m @ 6.6 gpt gold
- Heli-borne magnetic survey completed to define existing and locate new shear zone structures



# Gaban Gold Project Infrastructure





# Heli-borne Survey Area at Gaban/Cori

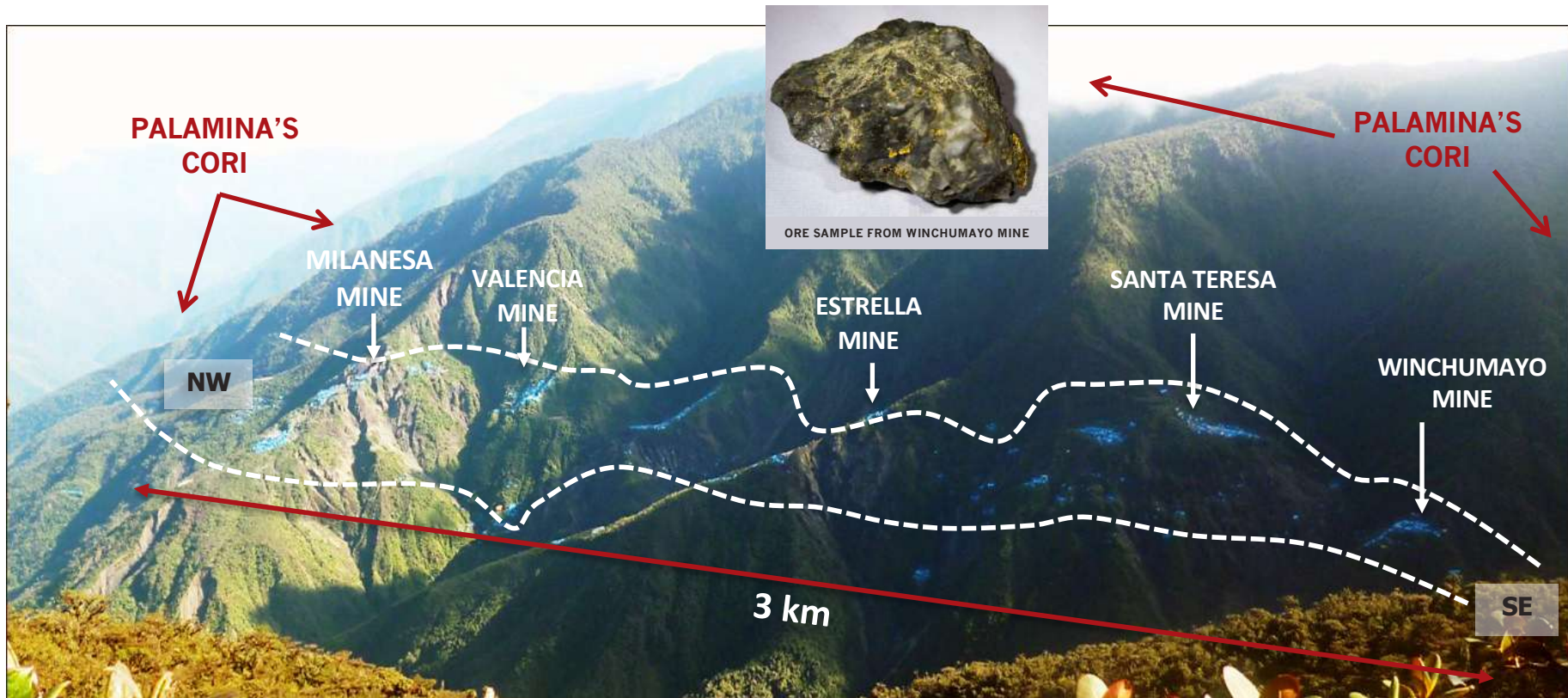


- Heli-borne magnetic survey completed in Sept. 2018
- **125m line spacing coverage;** PA controls ~85% of mining rights to watershed over Yanamayo River Basin
- **250m line spacing** covers Gaban east, west extensions
- **500m line spacing** over Cori project to cover known 3km hard rock mining area & east, west and down-dip extensions held by Palamina
- Flight survey increased geological understanding of shear structures driving alluvial and hard rock mining underway

# Cori Gold Project Mine Areas

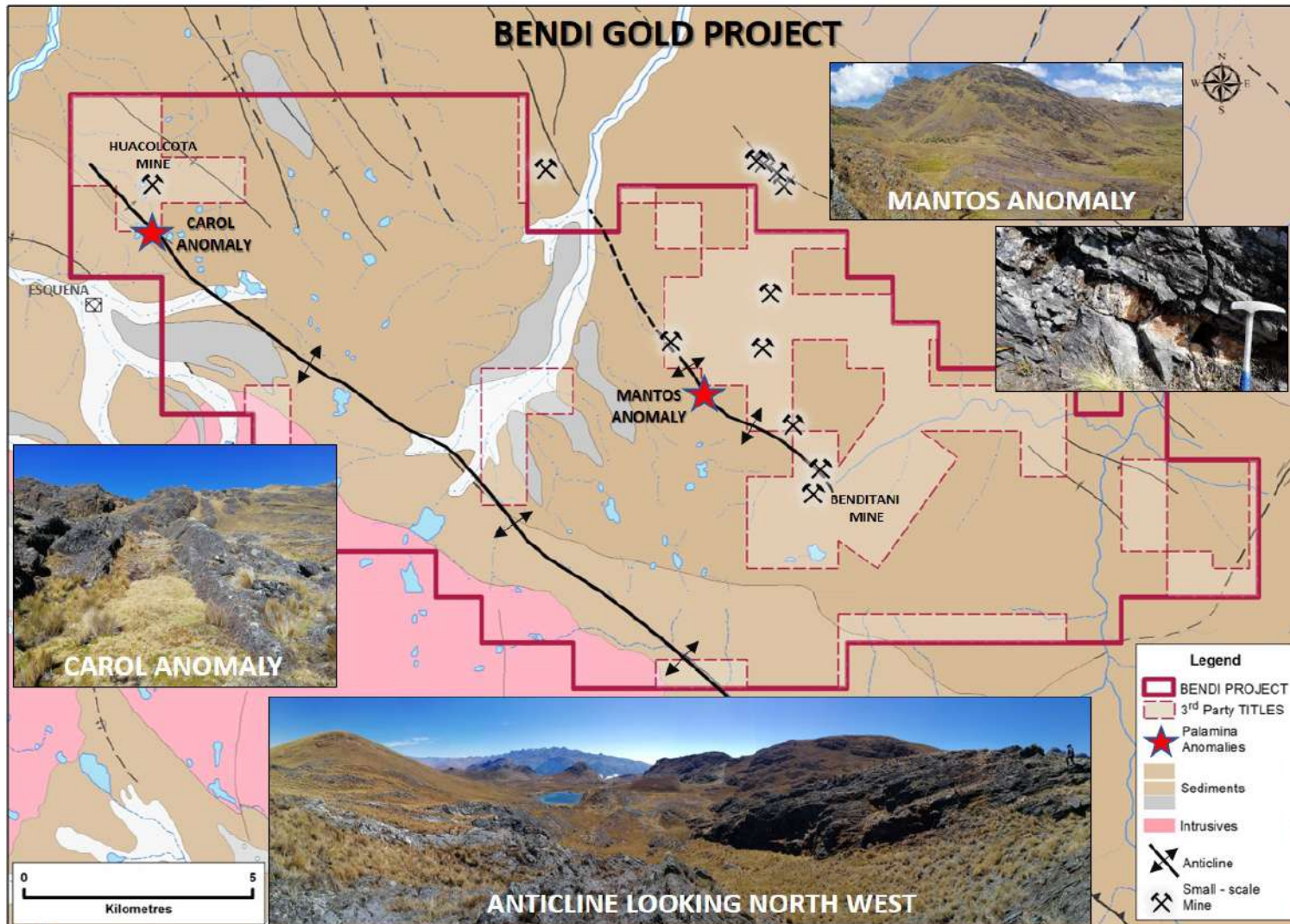


PALAMINA HOLDS 16,600 HECTARES TITLED & UNDER APPLICATION  
~1,200 INFORMALS MINING OVER 3 km, REPORTEDLY MINING TO MAX. 100 METRE DEPTH  
PA STAKED ALONG STRIKE NW & SE AND DOWN-DIP EXTENSIONS  
HELI-BORNE SURVEY COMPLETED AT 500M LINE SPACINGS





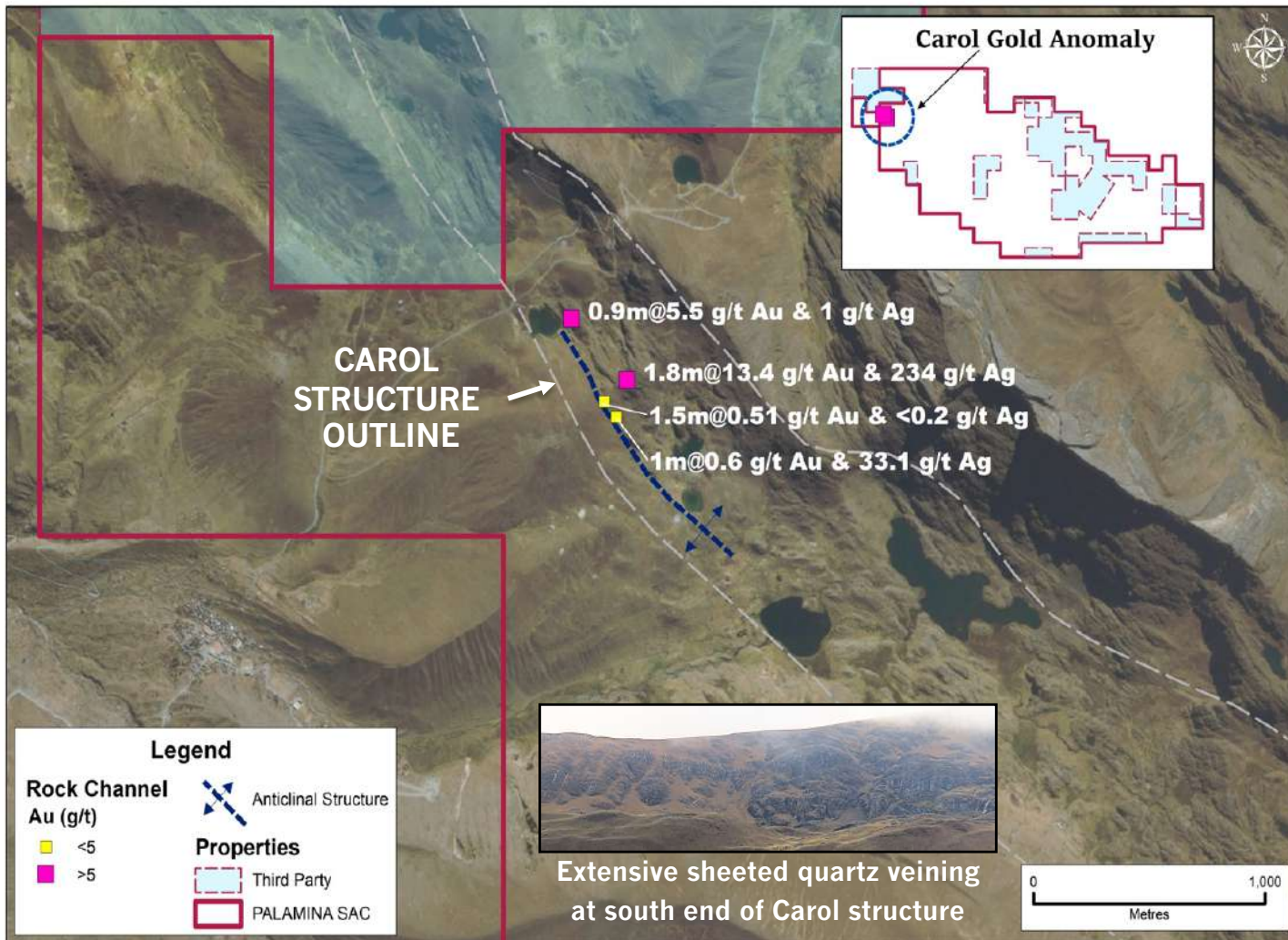
# Bendi Gold Project



- 15,700 hectares titled & under application
- Numerous 3<sup>rd</sup> party small gold mines in area
- Visible Gold identified off property: PA claimed extension
- Newly defined gold zones extending up to 7 km in length



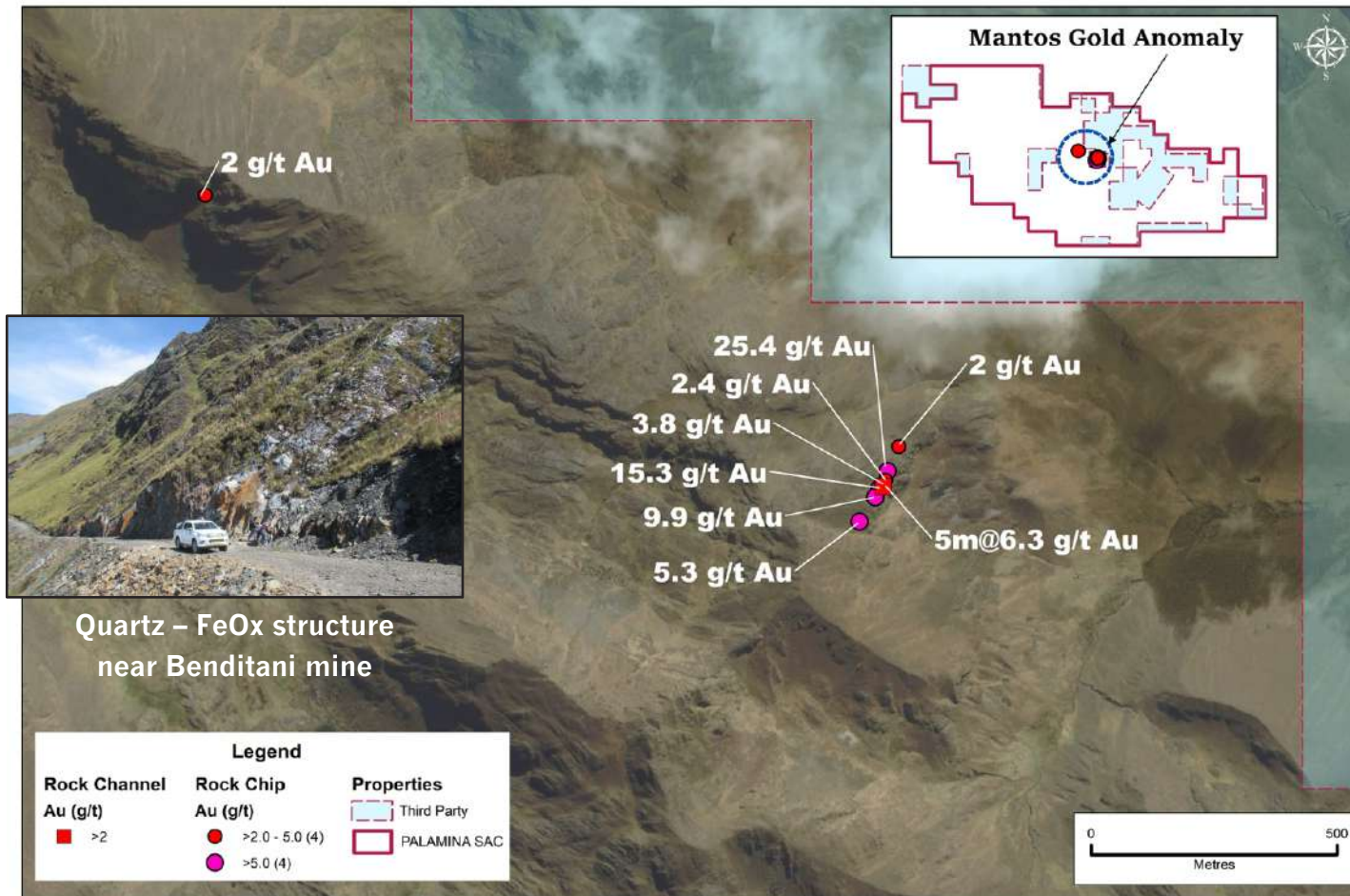
# Carol Gold Silver Anomaly



\*Map highlights only selective channel samples which do not fully represent all mineralisation and sampling completed on the property.

- Carol structure >15 km long NW-SE trending shear zone
- ~3km on strike to Benditani gold mine
- Channel samples + values up to :  
1.8m @ 13.4 gpt Au & 234 gpt Ag

# Mantos Gold Anomaly



\*Map highlights only selective rock-chip & channel samples which do not fully represent all mineralisation and sampling completed on the property.

- Mantos structure >7 km long shear-zone
- Sub-parallel to Benditani gold mine structure
- Rock-chip sample + values up to: 9.9, 15.3 & 25.4 gpt gold
- Channel samples + up to : 5m @ 6.3 gpt gold



# Palamina has a new stable

---



- Palamina has acquired 5 gold projects in the Puno Orogenic Gold Belt in south eastern Peru
- POGB one of worlds least formally explored orogenic gold belts
- Modern day Gold Rush underway / ground-truthed by informals
- Palamina visited and prioritized Peruvian projects in 2017
- Palamina begins systematic exploration of POGB projects in 2018
- Palamina systematic exploration leads to hard rock gold discoveries at Coasa, Bendi and Gaban gold projects
- Palamina completed +3,000 line km heli-borne geophysical survey
- DIA submitted to conduct drilling at Coasa in 2019

***“Shadow of head frame exploration without the head frame”***