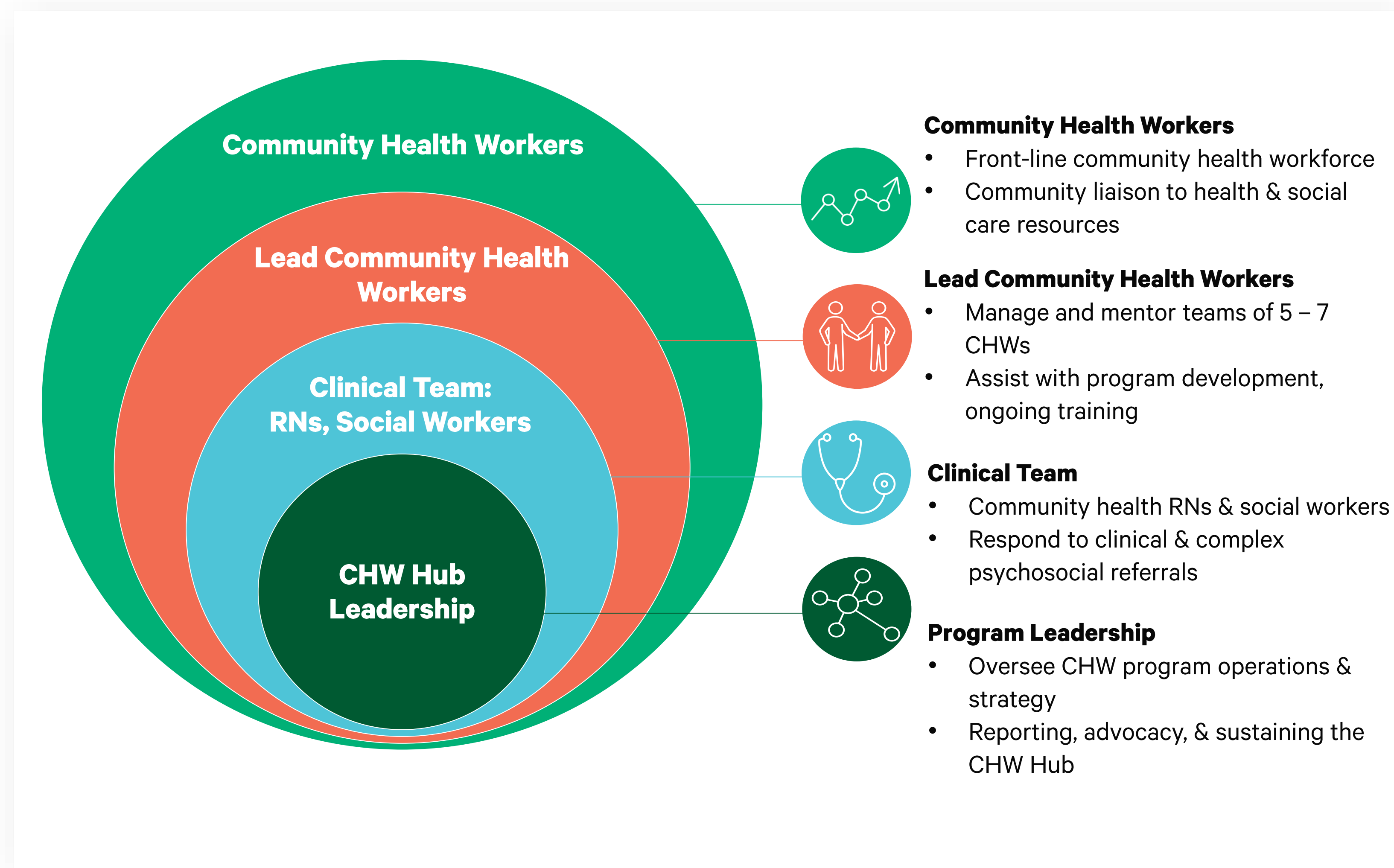


The centralized roll-out of CHWs can improve health and reduce gaps in care by integrating health care, social care, and public health.

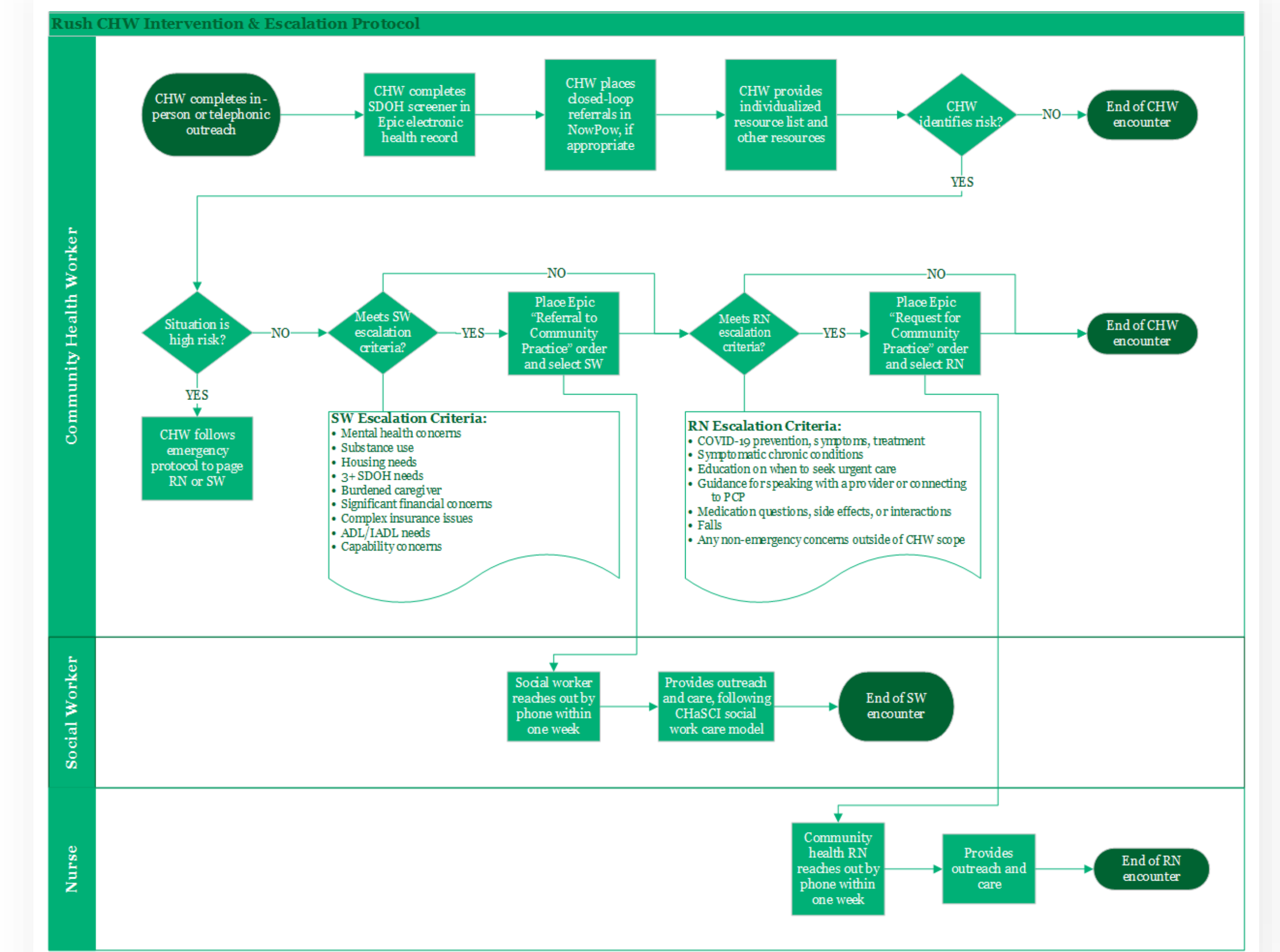
Rush's **Community Health Worker Hub** – based on the west side of Chicago, Illinois – is one example of the infrastructure needed to support such a team.



Our CHW Hub includes 25 CHWs, 5 Lead CHWs, 3 SWs, 2 RNs, and 3 leadership staff:



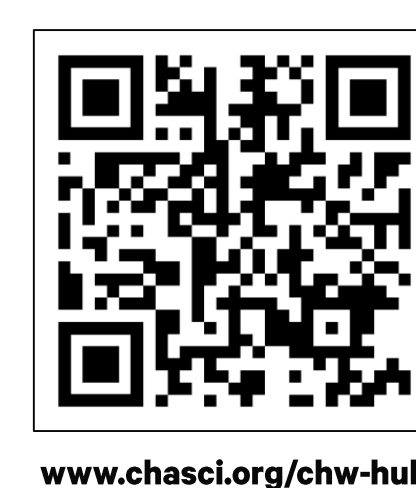
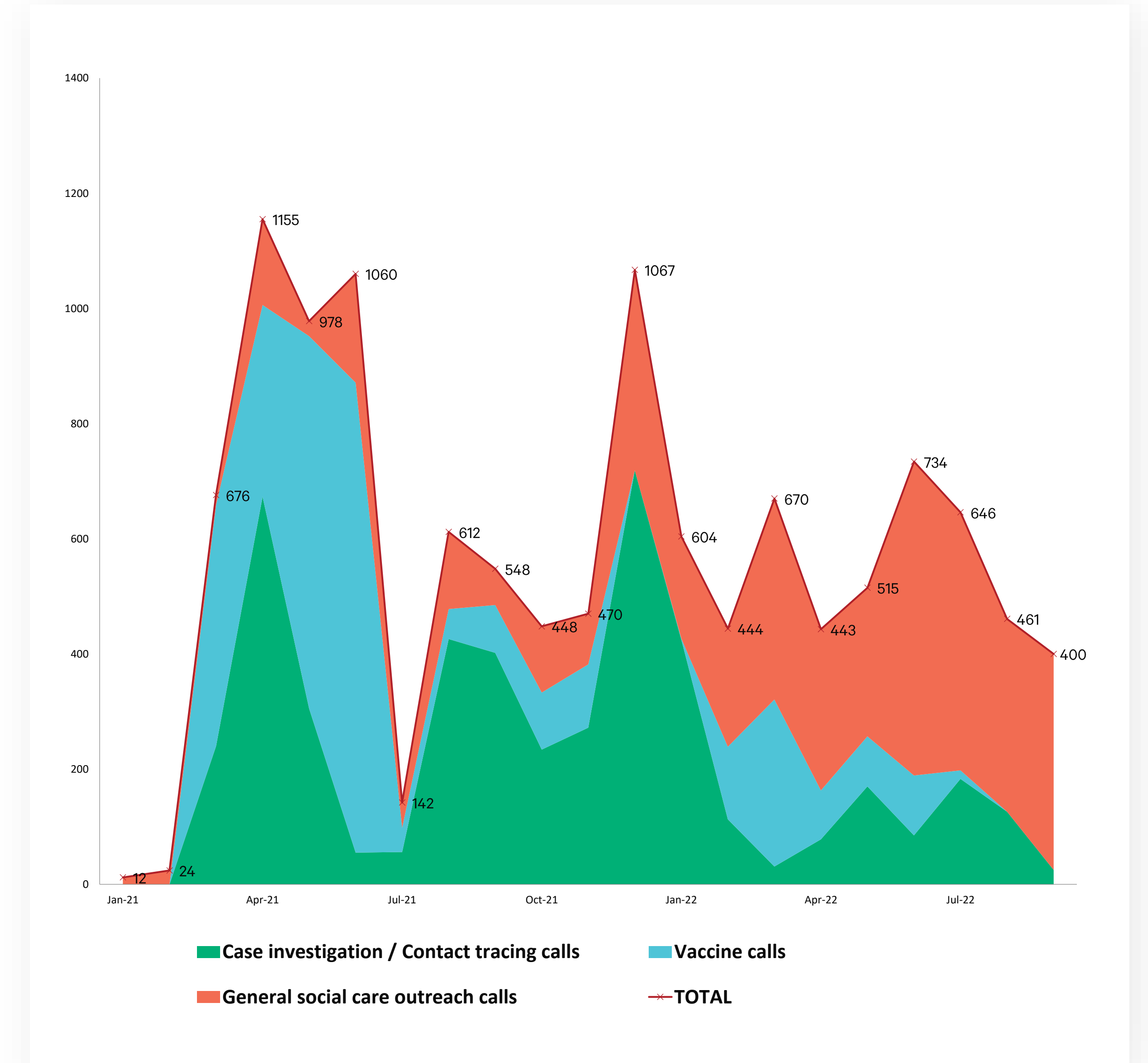
Across initiatives, the CHWs escalate clinical & complex psychosocial cases to community practice social workers and community health nurses:



Our centralized team of CHWs supports multiple programs that integrate health care, social care, and public health:

- Public health response (COVID, monkeypox)**
 - Testing
 - Vaccine education
 - Case investigation + contact tracing
- Social care in health care settings**
 - Emergency department
 - Cancer center
- Social care in the community**
 - Health fairs
 - Community canvassing
- Chronic disease prevention & management**
 - Health workshops
 - Screening events
 - Healthy lifestyles behavior change
- Youth and family outreach**
 - Collaboration with schools and school-based health centers
- Community research initiatives**
 - Focus groups
 - Intervention studies
- Trainings for community providers**
 - Health equity frameworks
 - CHW core competencies
 - Mental Health First Aid

Since Jan. 2021, our CHWs have provided over 12,000 public health and general social care outreach calls – with volumes peaking in alignment with COVID-19 surges.



TERESA BERUMEN, RUTH RICHMAN, VALERIE A. DAVIS
 “Building the Infrastructure for CHWs to Integrate Health Care, Social Care, & Public Health”
 APHA 2022