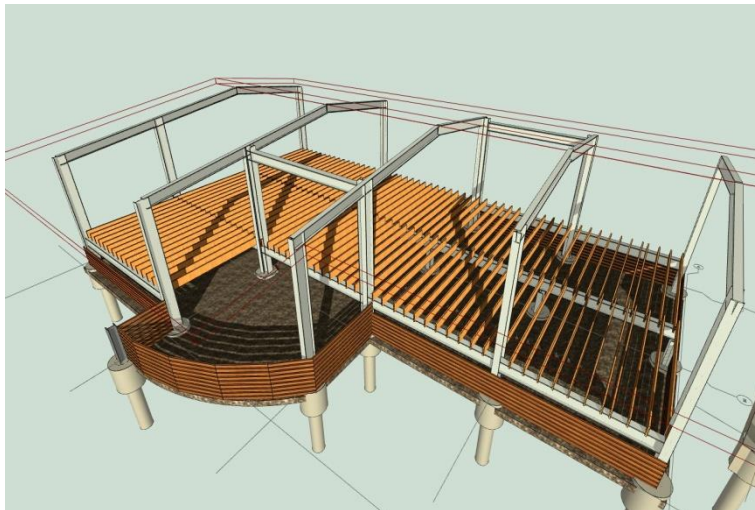


CATEGORY-5

STORM DEFENSE HOUSE



Mid Century Modern Style



Solid Steel Structure



Flexible Interiors

www.category-5.com

5423 Gibson Street

Houston, Texas 77007

713-398-5207



CATEGORY-5 STORM DEFENSE HOUSE

"Clean Look, Stucco Finish, Mid-Century Style"

The '**CATEGORY-5**' is a new type of house designed to provide security in the face of Houston's modern weather. It responds to the realities of 21st Century storms with a technology that is much stronger and more durable than usually found in residential buildings, in two models: 2,000 and 2,800 s.f.

The **CAT-5** features:

1. **160 mph Wind Rating** to withstand Category 5 Hurricanes - 21 mph stronger than City of Houston regulations
2. **Floor at 60" above ground** or Base Flood Elevation (whichever is higher), with low cost option for greater height in 12" increments
3. **R-63 Wall Insulation**, superior to R-19 in typical custom homes
4. **R-50 Roof Insulation**, superior to R-30 in typical custom homes
5. **Generous eaves up to 11'**, to shelter large, unobstructed decks
6. Huge roof areas for solar and water harvests;
7. **Durable, concealed steel structure** instead of vulnerable lumber, wafer board and plywood: Moisture-proof, Bug-proof, and Mold-proof
8. **Conventional structural design** emphasizes traditional, time-tested steel details for efficient erection and long term stability
9. **Ventilated flow-through crawlspace** without Pooling Floods, Standing Water, or the Rising Damp of typical raised homes
10. **Reinforced Stucco finish** to resist the worst that nature can dish out
11. **Fully customizable floor plan** delivers complete layout flexibility
12. **Optional car lifts** for vehicle security above flood level
13. Horizontal lines, clean look, Mid-Century style