

Alternate-leaf Dogwood (*Cornus alternifolia*)

Plant Characteristics

Plant Type: Tree

Light Requirement: Partial-sun

Soil Moisture: Moist and well drained

Soil Type: Well drained. Not clay.

Size: 12-25'

Flower: White

Bloom Time: May-June

Fruit: Blue/Black

Benefit for Wildlife and Insects: Source of pollen and nectar. Berries are eaten by mammals and birds alike.

Larval Host: Yes.

Special Note: This is a stunning tree. Various accounts say it can be planted in full sun while many say it prefers partial to shade. Best to plant it in partial-sun. Is more of an understory tree in its natural habitats.



American Crabapple (*Malus coronaria*)

Plant Characteristics

Plant Type: Tree

Light Requirement: Full-sun, Partial-sun

Soil Moisture: Average-dry.

Soil Type: Loamy and well drained

Size: 15-25'

Flower: White

Bloom Time: May-June

Fruit: Yellow

Benefit for Wildlife and Insects: Good source of pollen and nectar.
Fruits eaten by mammals and birds.

Larval Host:

Special Note: Fruit is edible for humans. Great tree to form a hedge and for fruit.

Deer Resistant: No



American Elderberry (*Sambucus canadensis*)

Plant Characteristics

Plant Type: Shrub

Light Requirement: Full-sun, Partial

Soil Moisture: Average-wet

Soil Type: Rich, moist soils

Size: 12 feet

Flower: White

Bloom Time: June-July

Fruit: Deep purple berries

Benefit for Wildlife and Insects: Birds love the berries. Great source of nectar and pollen

Larval Host:

Special Note: Great shrub to plant at water's edge or wet area to naturalize the space. It will spread to create a thicket unless thinned or cut back. Berries are edible for humans as well.

Deer Resistant: Moderate. Best to protect until of large enough size.



American Hazelnut (*Corylus americana*)

Plant Characteristics

Plant Type: Shrub

Light Requirement: Full-sun, Partial-sun

Soil Moisture: Dry-average

Soil Type: Various.

Size: 5-10'

Flower: Red (female) Green (male catkins)

Bloom Time: April-May

Fruit: Nut

Benefit for Wildlife and Insects: Birds and mammals eat the nuts.

Larval Host:

Special Note: Hazelnut is edible. More than one shrub is needed to cross pollinate. Great fall color.

Deer Resistant: Moderate



American Linden (*Tilia americana*)

Plant Characteristics

Plant Type: Tree

Light Requirement: Full-sun

Soil Moisture: Average

Soil Type: Well-drained and loamy

Size: 80 feet

Flower: Yellow

Bloom Time: April

Fruit: Brown

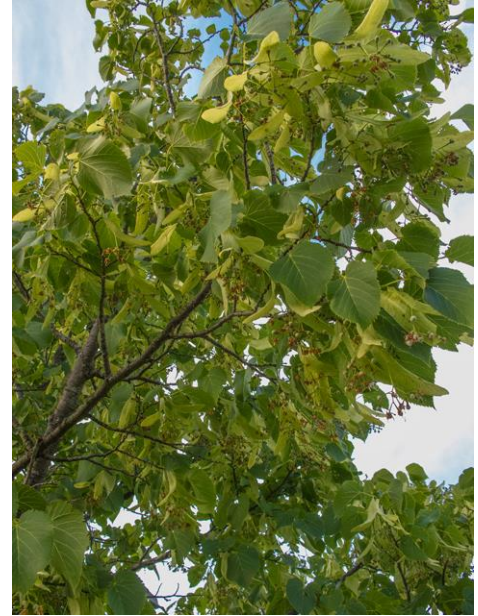
Benefit for Wildlife and Insects: Great source of pollen and nectar.

Birds and mammals eat the berries.

Larval Host:

Special Note: Great tree for any landscape. High Ecological value.

Deer Resistant: Moderate



American Plum (*Prunus americana*)

Plant Characteristics

Plant Type: Tree

Light Requirement: Full-sun, Partial

Soil Moisture: Average-wet

Soil Type: Various

Size: 15-25 feet

Flower: White

Bloom Time: May

Fruit: Red plums

Benefit for Wildlife and Insects: Great early source of nectar and pollen. Fruit eaten by some mammals.

Larval Host:

Special Note: Can be used to form hedges or thickets or planted as specimen tree in landscape. Beautiful small tree. Male and female trees.

Deer Resistant: No



American Sycamore (*Platanus occidentalis*)

Plant Characteristics

Plant Type: Tree

Light Requirement: Full-sun, Partial

Soil Moisture: Average to wet.

Soil Type: Rich, moist soils.

Size: 100 feet

Flower: Green

Bloom Time: April-May

Fruit: Brown

Benefit for Wildlife and Insects: Good source of food for birds and small mammals. Shelter and home to cavity nesting birds.

Larval Host:

Special Note: Very striking bark that exposes various colors as it peels.

Deer Resistant: Yes



American Witch-hazel (*Hamamelis virginiana*)

Plant Characteristics

Plant Type: Tree

Light Requirement: Partial-Shade, Shade

Soil Moisture: Average-moist

Soil Type: Well-drained, loamy.

Size: 15- 25'

Flower: Yellow

Bloom Time: Late fall

Fruit: Brown

Benefit for Wildlife and Insects: Late source of nectar and pollen. Fruit is eaten by mammals and birds.

Larval Host:

Special Note: Late blooms are very fragrant. Great understory shrub.

Deer Resistant: Moderate



Arrowwood Viburnum (*Viburnum dentatum*)

Plant Characteristics

Plant Type: Shrub

Light Requirement: Full-sun, Partial

Soil Moisture: Average-wet

Soil Type: Various as long as they retain moisture.

Size: 15 feet

Flower: White

Bloom Time: May

Fruit: Dark purple berries

Benefit for Wildlife and Insects: Nectar, pollen and food source for birds and mammals. Protection and cover.

Larval Host: Spring Azure

Special Note: Mass plant in average to wet areas to create a hedge or thicket.

Deer Resistant: Yes



Bee Balm (Monarda fistula)

Plant Characteristics

Plant Type: Forb

Light Requirement: Full-sun, Partial

Soil Moisture: Average-dry

Soil Type: Various

Size: 4-6 feet

Flower: Violet-purple

Bloom Time: July- September

Fruit:

Benefit for Wildlife and Insects: Pollinators love this plant. It will be full of them. Including hummingbirds and Hummingbird Moth.

Larval Host:

Special Note: A must for any landscape habitat.

Deer resistant: Yes.



Big Bluestem (*Andropogon gerardii*)

Plant Characteristics

Plant Type: Grass

Light Requirement: Sun, part-sun

Soil Moisture: Average-moist

Soil Type: Variable

Size: 4-8ft

Flower: yellow with hints of brownish red on green stems

Bloom Time: August-fall

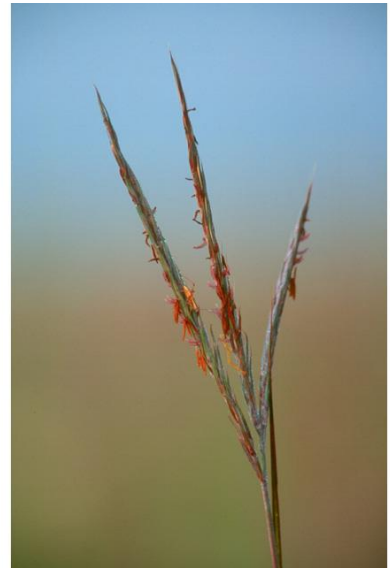
Fruit: Seedheads

Benefit for Wildlife and Insects: Provides cover for at least 24 species of songbirds and nesting sites or seeds for Grasshopper Sparrow, Henslow's Sparrow, and other sparrows, as well as nesting sites for Sedge Wrens and Western Meadowlarks.

Larval Host: Delaware Skipper, Dusted Skipper

Special Note: This is a tall grass, so be aware of that when adding it to a landscape.

Deer Resistant: Yes.



Big-leaf Aster (*Eurybia macrophylla*)

Plant Characteristics

Plant Type: Forb

Light Requirement: Shade

Soil Moisture: Dry-average

Soil Type: Various, well-drained.

Size: 2'

Flower: White with yellow center.

Bloom Time: July-August

Fruit:

Benefit for Wildlife and Insects: Good source of late pollen and nectar.

Larval Host:

Special Note: Great for dry shady sites. Great to create a base ground cover.

Deer Resistant: Yes



Bishop's Cap (*Mitella diphylla*)

Plant Characteristics

Plant Type: Forb

Light Requirement: Shade

Soil Moisture: Average- wet

Soil Type: Loamy and rich with high organic matter.

Size: 2 feet

Flower: White

Bloom Time: May

Fruit:

Benefit for Wildlife and Insects: Early source of nectar and pollen.

Larval Host:

Special Note: Woodland ground cover with a very neat flower.

Deer Resistant: Yes



Black Cherry (Prunus serotina)

Plant Characteristics

Plant Type: Tree

Light Requirement: Full-sun

Soil Moisture: Average

Soil Type: Well-drained.

Size: ~100'

Flower: White

Bloom Time: May-June

Fruit: Dark red cherries

Benefit for Wildlife and Insects: Host plant for many butterflies and insects. Fruit is eaten by many birds and animals.

Larval Host: Yes

Special Note: Top three trees to plant along with Oak and Willow. Provides huge ecological benefits. Highly recommended.

Deer Resistant: Low



Black Chokeberry (Aronia prunifolia)

Plant Characteristics

Plant Type: Shrub

Light Requirement: Full-sun, Partial

Soil Moisture: Average-wet

Soil Type: Various with ability to hold moisture.

Size: 6 feet

Flower: White

Bloom Time: June

Fruit: Black-deep purple berries

Benefit for Wildlife and Insects: Good source of nectar and pollen.

Birds eat the berries

Larval Host:

Special Note: One of the most fragrant shrubs when in bloom. Plant this species en masse or set apart in the wetter spaces of the landscape. Also does very well in average moisture settings. Highly recommended.

Deer Resistant: Moderate. Deer eat the flower buds. Use repellent.



Black Eyed Susan (Rudbeckia Hirta)

Plant Characteristics

Plant Type: Forb

Light Requirement: Full-sun, Partial

Soil Moisture: Average-dry

Soil Type: Various

Size: 3 feet

Flower: Yellow

Bloom Time: June-September

Fruit:

Benefit for Wildlife and Insects: Great source of nectar and pollen.

Larval Host: Gorgone Checkerspot, Bordered Patch butterfly

Special Note: Readily reseeds, as this species is a short-lived perennial. Do not cut back in fall!

Deer resistant: Yes



Black Walnut (*Juglans nigra*)

Plant Characteristics

Plant Type: Tree

Light Requirement: Full-sun

Soil Moisture: Average-moist

Soil Type: Various. Well drained.

Size: 100'

Flower: Green

Bloom Time: April-May

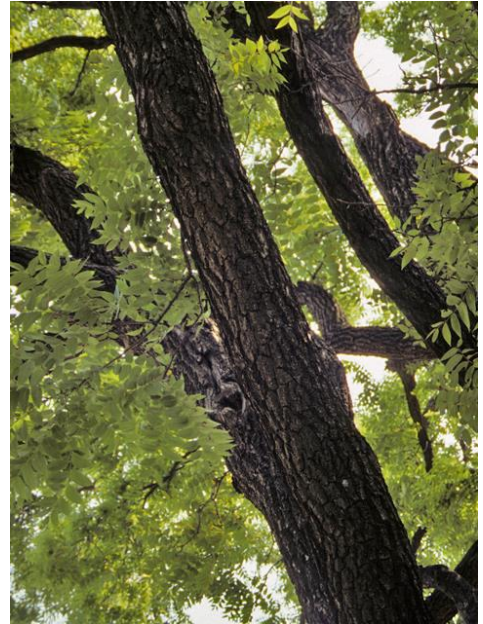
Fruit: Large. Green.

Benefit for Wildlife and Insects: Great host, and nuts are eaten by wildlife, particularly squirrels.

Larval Host: Yes

Special Note: Gets a bad rap for preventing plants from growing underneath. Most native woodland plants are well-adapted to Walnut. Great tree.

Deer Resistant: Yes.



Black Willow (Salix Nigra)

Plant Characteristics

Plant Type: Tree

Light Requirement: Full-sun, Partial-sun

Soil Moisture: Average-wet

Soil Type: Various moist soils

Size: 65ft

Flower: Green

Bloom Time: April

Fruit:

Benefit for Wildlife and Insects: An ecological powerhouse that supports insects and wildlife in numerous way.

Larval Host: Yes

Special Note: Black Willow can be weak limbed, so care needs to be taken that it is not planted too close to structures. An important tree to include in any habitat creation.

Deer Resistant: Yes



Blue Eyed Grass (*Sisyrinchium angustifolium*)

Plant Characteristics

Plant Type: Forb

Light Requirement: Full-sun, Partial

Soil Moisture: Average

Soil Type: Most except clay.

Size: 12-18 inches

Flower: Blue

Bloom Time: May-June

Fruit:

Benefit for Wildlife and Insects: Great source of pollen and nectar.

Blooms between the spring and summer blooms.

Larval Host:

Special Note: Will spread by underground rhizomes and create a nice low colony.

Deer Resistant: No



Blue Lobelia (*Lobelia siphilitica*)

Plant Characteristics

Plant Type: Forb

Light Requirement: Full-sun, Partial

Soil Moisture: Average-wet

Soil Type: Various (must be able to hold moisture).

Size: 2-3 feet

Flower: Blue

Bloom Time: July-Fall

Fruit:

Benefit for Wildlife and Insects: Great source of nectar and pollen for pollinators and hummingbirds.

Larval Host:

Special Note: Great for use in a wet area of the landscape. Does well in less wet area as long as the soil stays moist. In average moisture, plant with some shade.

Deer Resistant: Yes



Blue Vervain (*Verbena hastata*)

Plant Characteristics

Plant Type: Forb

Light Requirement: Full-sun, Partial

Soil Moisture: Average-wet

Soil Type: Various moist soils

Size: 3-5 feet

Flower: Blue-purple

Bloom Time: July-September

Fruit:

Benefit for Wildlife and Insects: Great source of nectar and pollen.
Bumble bees love this plant.

Larval Host: Common Buckeye

Special Note: Great for use in a rain garden or at a water's edge. Plant where you plant Queen of the Prairie or Swamp Milkweed. Will volunteer freely.

Deer Resistant: Yes



Blue-Stemmed Goldenrod (*Solidago caesia*)

Plant Characteristics

Plant Type: Forb

Light Requirement: Partial-shade, Shade

Soil Moisture: Dry-average

Soil Type: Various

Size: 2-3ft

Flower: Yellow

Bloom Time: September-November

Fruit:

Benefit for Wildlife and Insects: Attracts lots of butterflies and pollinators. Also brings other beneficial insects.

Larval Host:

Special Note: Great Goldenrod for shady habitats. It is essential to have late blooming plants in the garden.

Deer Resistant: Yes



Boneset (*Eupatorium perfoliatum*)

Plant Characteristics

Plant Type: Forb

Light Requirement: Full-sun, Partial

Soil Moisture: Average-wet

Soil Type: Various moist soils

Size: 5 feet

Flower: White

Bloom Time: July-September

Fruit:

Benefit for Wildlife and Insects: A powerhouse for pollen and nectar. Pollinators and beneficial insects flock to this species!

Larval Host:

Special Note: Readily reseeds and spreads. Can take over a small space. Still highly recommended for its ecological benefit.

Deer resistant: Yes.



Bottlebrush Grass (*Elymus hystrix*)

Plant Characteristics

Plant Type: Grass

Light Requirement: Partial Sun, Shade

Soil Moisture: Average-dry

Soil Type: Various

Size: 3- 5 feet

Flower: Green

Bloom Time: June-July

Fruit: Seeds

Benefit for Wildlife and Insects: Food source for birds and mammals. Cover.

Larval Host: Northern Pearly Eye

Special Note: It is hard to find grasses that grow in the shade. If you are looking to fill a shaded area, this is a great choice.

Deer Resistant: Yes



Bur Oak (*Quercus macrocarpa*)

Plant Characteristics

Plant Type: Tree

Light Requirement: Full-sun

Soil Moisture: Average

Soil Type: Various

Size: 85 feet

Flower: Green

Bloom Time: May

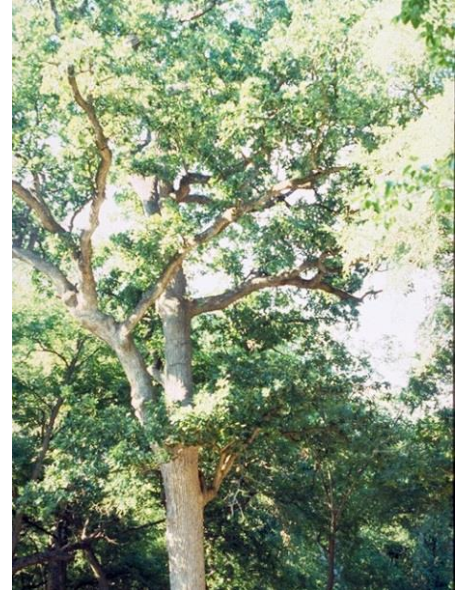
Fruit: Acorn

Benefit for Wildlife and Insects: Oak is one of the most important species. It is a food source and larval host for over 400 species.

Larval Host: Many butterflies and moths

Special Note: Bur Oak is resistant to Oak Wilt. Never prune spring-fall.
Want to help save the planet? Plant an Oak!

Deer Resistant: Not really. Use repellent or put up fencing until it gets big enough.



Bush Honeysuckle (Diervilla lonicera)

Plant Characteristics

Plant Type: Shrub

**Light Requirement: Full-sun,
Partial**

Soil Moisture: Average

Soil Type: Various, well-drained

Size: 3 feet

Flower: Yellow

Bloom Time: June

Fruit:

Benefit for Wildlife and Insects: Primarily for pollen and nectar. Also offers cover.

Larval Host:

Special Note: Will form dense low thickets. Can overwhelm small spaces.

Deer Resistant: Yes



Butterfly Weed (*Asclepias tuberosa*)

Plant Characteristics

Plant Type: Forb

Light Requirement: Full-sun, Partial

Soil Moisture: Average-dry

Soil Type: Well-drained

Size: 2-3 feet

Flower: Orange

Bloom Time: June-August

Fruit: Pods

Benefit for Wildlife and Insects: A great source of pollen and nectar.
Attracts many beneficial insects.

Larval Host: Grey Hairstreak, Monarch, Queens

Special Note: A very well-behaved Milkweed.

Deer Resistant: Moderate-yes



Buttonbush (*Cephalanthus occidentalis*)

Plant Characteristics

Plant Type: Shrub

Light Requirement: Full-sun, Partial

Soil Moisture: Average-wet

Soil Type: Moist to wet soils

Size: 15 feet

Flower: White globe

Bloom Time: June-August

Fruit:

Benefit for Wildlife and Insects: Birds and mammals love to eat the seeds of this plant, especially aquatic birds. A big draw for butterflies and other pollinators and beneficials.

Larval Host:

Special Note: Use this in the wet areas of your landscape- next to ponds, streams, vernal ponds. Can handle average moisture as long as moisture is retained consistently. Super cool globe flowers!

Deer Resistant: Yes



Canadian Anemone (*Anemone canadensis*)

Plant Characteristics

Plant Type: Forb

Light Requirement: Full-sun, Partial

Soil Moisture: Average-wet

Soil Type: Various that is able to maintain moisture.

Size: 12 inches

Flower: White

Bloom Time: May-July

Fruit:

Benefit for Wildlife and Insects: Nectar and pollen source.

Larval Host:

Special Note: This spreads quickly and readily. Use as a base layer in wet areas or rain gardens. Interplant with other hardy species. Great for erosion control.

Deer Resistant: Yes



Cardinal Flower (*Lobelia cardinalis*)

Plant Characteristics

Plant Type: Forb

Light Requirement: Full-sun, Partial-sun

Soil Moisture: Moist-wet

Soil Type: Wet soils

Size: 2-4ft

Flower: Red

Bloom Time: Jul-August

Fruit:

Benefit for Wildlife and Insects: Great source of nectar and pollen.
Attracts hummingbirds.

Larval Host:

Special Note: Great for a rain garden or any wet areas in your landscape.

Deer Resistant: Yes



Choke Cherry (*Prunus virginiana*)

Plant Characteristics

Plant Type: Tree

Light Requirement: Sun, Part-sun

Soil Moisture: Dry-average

Soil Type: Variable

Size: 20-30ft

Flower: Many white flowers on numerous flower spikes. Very striking.

Bloom Time: May-June

Fruit: Very sour but also edible cherries.

Benefit for Wildlife and Insects: Leaves and berries are essential sources of food for many birds and mammals. Great source of nectar and pollen for insects.

Larval Host: Columbia silkmoth

Special Note: Thicket forming. Very important species to include in any habitat creation, but may be difficult to manage in small landscapes.

Deer Resistant: No. Protect until they grow larger.



Common Cinquefoil (*Potentilla simplex*)

Plant Characteristics

Plant Type: Forb

Light Requirement: Full-sun- shade

Soil Moisture: Average-dry

Soil Type: Various

Size: 12 inches

Flower: Yellow

Bloom Time: June

Fruit:

Benefit for Wildlife and Insects: Great source of pollen and nectar

Larval Host:

Special Note: Fantastic ground cover. Acts as a living mulch. Will not flower as much in shaded locations.

Deer Resistant: Yes



Common Milkweed (*Asclepias syriaca*)

Plant Characteristics

Plant Type: Forb

Light Requirement: Full-sun, Partial

Soil Moisture: Average

Soil Type: Various. Does well in poor soils too.

Size: 3-5 feet

Flower: Pink to light purple

Bloom Time: June-July

Fruit:

Benefit for Wildlife and Insects: A pollinator power house. In addition to Monarchs, one will find a vast array of insects on this plant.

Larval Host: Monarch

Special Note: Spreads quickly and very hard to contain. For those who appreciate a cheeky nature. Blooms are very fragrant.

Deer Resistant: Moderate-yes



Common Mountain Mint (*Pycnanthemum virginianum*)

Plant Characteristics

Plant Type: Forb

Light Requirement: Full-sun, Partial-sun

Soil Moisture: Moist-wet

Soil Type: Various moist to wet

Size: 3ft

Flower: White

Bloom Time: July-August

Fruit:

Benefit for Wildlife and Insects: Great source of nectar and pollen.

Brings in many butterflies and beneficials.

Larval Host:

Special Note: Great species for use in a rain garden or simply planted in wet areas of the landscape or habitat. Can be aggressive. Plant with similarly cheeky plants.

Deer Resistant: Yes



Culver's Root (*Veronicastrum virginicum*)

Plant Characteristics

Plant Type: Forb

Light Requirement: Full-sun, Partial

Soil Moisture: Average-wet

Soil Type: Various

Size: 5-6 feet

Flower: White

Bloom Time: June-August

Fruit:

Benefit for Wildlife and Insects: Great source of pollen and nectar. This species will bring in many beneficial insects.

Larval Host:

Special Note: Use in areas that temporarily fill with water such as rain gardens. Also use at water's edge. Also adaptable to average soil that retains moisture.

Deer Resistant: Yes



Cup Plant (*Shilphium perfoliatum*)

Plant Characteristics

Plant Type: Forb

Light Requirement: Full-sun, Partial-sun

Soil Moisture: Average-wet

Soil Type: Various. Must remain moist.

Size: 6-8ft

Flower: Yellow

Bloom Time: July-September

Fruit:

Benefit for Wildlife and Insects: Attracts a wide variety of butterflies and other pollinators and beneficials.

Larval Host:

Special Note: This is a very robust species. Needs space, as it will spread. Leaf attachments form a “cup” that retains water that is used by various insects and animals.

Deer Resistant: Yes



Early Meadow Rue (*Thalictrum dioicum*)

Plant Characteristics

Plant Type: Forb

Light Requirement: Shade

Soil Moisture: Average-wet (not standing water)

Soil Type: Various.

Size: 2 feet

Flower: Green, purple, yellow

Bloom Time: April-May

Fruit:

Benefit for Wildlife and Insects: Good early source of nectar.

Larval Host:

Special Note: Great for a woodland habitat. Will form nice low colonies. Male and female flowers are on separate plants.

Deer Resistant: Yes



Eastern Cottonwood (*Populus deltoids*)

Plant Characteristics:

Plant Type: Tree

Light Requirement: Sun , Part Shade

Soil Moisture: Dry , Moist or Wet

Soil type: Tolerant of any (except for constantly waterlogged) soil.

Size: Large Shade tree that can reach 100ft at times.

Attracts: Birds , Butterflies

Larval Host: Mourning Cloak, Red-spotted Purple, Viceroy & Tiger Swallowtail butterflies.

Deer Resistant: High

Use Wildlife: Seeds-granivorous birds, Nesting material, Browse.

Special Note: A beautiful tree that gets a bad rap for being messy.

Deer Resistant: No



Eastern Redbud (*Cercis canadensis*)

Plant Characteristics

Plant Type: Tree

Light Requirement: Full-sun, Partial

Soil Moisture: Average

Soil Type: Various rich and well-drained.

Size: 25 feet

Flower: Purple

Bloom Time: May

Fruit: Pea pods

Benefit for Wildlife and Insects: Edible seeds for birds and mammals. Flowers are good source of nectar and pollen in the early part of the season.

Larval Host:

Special Note: This is a most stunning tree when in bloom. Very interesting leaves. Older trees have great character.

Deer Resistant: Moderate



Flowering Dogwood (Cornus florida)

Plant Characteristics

Plant Type: Tree

Light Requirement: Full-sun, Partial-sun

Soil Moisture: Average

Soil Type: Various, well-drained

Size: 15-35ft

Flower: White

Bloom Time: May

Fruit: Orange/red berries in clumps.

Benefit for Wildlife and Insects: Good source of early nectar. Fruit is eaten by many birds.

Larval Host:

Special Note: Very showy Dogwood that also offers great fall color. Great tree to include in your landscape.

Deer Resistant: Moderate?



Flowering Raspberry (Rubus odoratus)

Plant Characteristics

Plant Type: Shrub

Light Requirement: Sun-shade

Soil Moisture: Average-moist

Soil Type: Various

Size: 3-6ft

Flower: Pink/Purple

Bloom Time: June-August

Fruit: Raspberry

Benefit for Wildlife and Insects: Huge source of food for all manner of birds. Flowers are an excellent source of pollen and nectar.

Larval Host: Possibly

Special Note: This shrub will Spread and form an awesome hedge row. Highly recommended to fill large spaces. Very fragrant flowers.

Deer Resistant: Yes



Foam Flower (*Tiarella cordifolia*)

Plant Characteristics

Plant Type: Forb

Light Requirement: Shade

Soil Moisture: Average

Soil Type: Various well-drained

Size: 12 inches

Flower: White

Bloom Time: April-May

Fruit:

Benefit for Wildlife and Insects: Good source of nectar and pollen early in the season.

Larval Host:

Special Note: Great ground cover in a woodland setting. Very showy in a mass planting. Spreads easily.

Deer Resistant: Yes



Foxglove (*Penstemon digitalis*)

Plant Characteristics

Plant Type: Forb

Light Requirement: Full-sun, Partial

Soil Moisture: Average-wet

Soil Type: Various

Size: 3-4 feet

Flower: White

Bloom Time: June-July

Fruit:

Benefit for Wildlife and Insects: Favorite for hummingbirds and bumble bees. Great source of nectar and pollen

Larval Host:

Special Note: Very showy plant.

Deer Resistant: Yes



Fragrant Sumac (Rhus aromatic)

Plant Characteristics

Plant Type: Shrub

Light Requirement: Full-sun, Partial

Soil Moisture: Average-dry

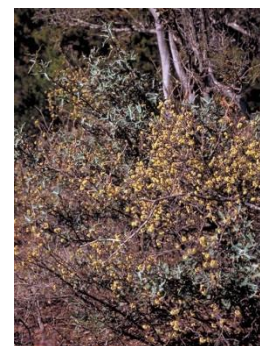
Soil Type: Various well-drained soils.

Size: 6 feet

Flower: Yellow

Bloom Time: May

Fruit: Red



Benefit for Wildlife and Insects: Food for birds and small mammals.
Early source of pollen and nectar.

Larval Host: Red-banded Hairstreak and Banded Hairstreak

Special Note: There are both male and female plants. The berries only develop on the female, but both are needed for pollination. Buy shrubs in at least pairs. Great species for diverse habitat creation.

Deer Resistant: Yes

Golden Alexanders (*Zizia aurea*)

Plant Characteristics

Plant Type: Forb

Light Requirement: Full-sun, Partial

Soil Moisture: Average-wet

Soil Type: Various moist soils

Size: 3 feet

Flower: Yellow

Bloom Time: May-June

Fruit:

Benefit for Wildlife and Insects: Attracts lots of pollinators and beneficial insects.

Larval Host: Black Swallowtail

Special Note: Great for use in a rain garden or other naturally wet areas. Does very well in other areas as long as the soil retains moisture.

Deer Resistant: Moderate



Gray Dogwood (Cornus foemina)

Plant Characteristics

Plant Type: Shrub

Light Requirement: Full-sun, Partial

Soil Moisture: Average-wet (not standing water)

Soil Type: Soil that holds moisture.

Size: 10 feet

Flower: White

Bloom Time: April-June

Fruit: White berries

Benefit for Wildlife and Insects: All sorts of insects and birds. Greats great cover for many birds and wildlife. High berry production.

Larval Host: Summer Azure Butterfly

Special Note: Great for forming a thicket or hedgerow.

Deer Resistant: Moderate-yes



Hackberry (*Celtis occidentalis*)

Plant Characteristics

Plant Type: Tree

Light Requirement: Full-sun, Partial-sun

Soil Moisture: Average

Soil Type: Various well-drained

Size: 60ft

Flower: Green

Bloom Time: May

Fruit: Purple/Red

Benefit for Wildlife and Insects: Great source of early nectar and pollen. Food source for birds and mammals.

Larval Host: Yes

Special Note: Smaller than other canopy trees, but still an important tree for Michigan habitats.

Deer Resistant: Yes



Harebell (*Campanula rotundifolia*)

Plant Characteristics

Plant Type: Forb

Light Requirement: Full-sun, Partial

Soil Moisture: Average- dry

Soil Type: Various. Not clay

Size: 2 feet

Flower: Purple

Bloom Time: June-August

Fruit:

Benefit for Wildlife and Insects: Hummingbirds and bumble bees along with other pollinators

Larval Host:

Special Note: This is a very well-behaved plant. Can get pushed aside by more aggressive plants.

Deer Resistant: Yes



Heart-Leaved Aster(*Symphotrichum cordifolium*)

Plant Characteristics

Plant Type: Forb

Light Requirement: Partial Shade-Shade.
Flowers best in Partial.

Soil Moisture: Average-dry

Soil Type: Various

Size: 1-3 feet

Flower: Violet-white

Bloom Time: August-Sept.

Fruit:

Benefit for Wildlife and Insects: Fantastic pollen and nectar source for many insects.

Larval Host:

Special Note: Asters can be very opportunistic so not the best for small landscapes.

Deer Resistant: Yes (but watch out for the rabbits!)



Honey Locust (*Gleditsia triacanthos*)

Plant Characteristics

Plant Type: Tree

Light Requirement: Full-sun

Soil Moisture: Average-moist

Soil Type: Various

Size:75-100ft

Flower: Green/Yellow

Bloom Time: April/May

Fruit: Long Seed Pods



Benefit for Wildlife and Insects: Nectar and Pollen. Nesting and cover. Fruit eaten by wildlife.

Larval Host: Yes

Special Note: Very common tree in SE Michigan. Offers speckled sunlight under the canopy and leaves easily decompose in landscape. Great tree.

Deer Resistant: Yes

Hop-Hornbeam (*Ostrya virginiana*)

Plant Characteristics

Plant Type: Tree

Light Requirement: Partial-shade, Shade

Soil Moisture: Average

Soil Type: Various well-drained

Size: 15-35ft

Flower: Yellow/green

Bloom Time: April/May

Fruit:

Benefit for Wildlife and Insects: Birds love the fruit from this tree.

Larval Host:

Special Note: Very slow growing tree. Great for shady areas. Flowers are striking.

Deer Resistant: Yes



Horsemint (*Monarda punctata*)

Plant Characteristics

Plant Type: Forb

Light Requirement: Full-sun-Partial

Soil Moisture: Average-dry

Soil Type: Various

Size: 2 feet

Flower: White and purple

Bloom Time: July-September

Fruit:

Benefit for Wildlife and Insects: Great source of pollen and nectar.

Wasps love to visit these plants when in bloom

Larval Host:

Special Note: Short-lived perennial. Readily reseeds. Yet another reason not to do that fall clean up- You will be cleaning up the next generation!

Deer Resistant: Yes



Indian Grass (*Sorghastrum nutans*)

Plant Characteristics

Plant Type: Grass

Light Requirement: Full-sun, Partial

Soil Moisture: Average-dry.

Soil Type: Various

Size: 4-6 feet

Flower: Brown, green and yellow

Bloom Time: August

Fruit:

Benefit for Wildlife and Insects: Cover, browse. Birds love the seeds.

Various insects eat the leaves as a main food source.

Larval Host: Pepper-and-Salt Skipper butterfly

Special Note: Will readily fill an area. Not great for small spaces since it will out compete other species.

Deer Resistant: Yes



Jack in the Pulpit (*Arisaema triphyllum*)

Plant Characteristics

Plant Type: Forb

Light Requirement: Shade

Soil Moisture: Average-moist

Soil Type: Various

Size: 13ft

Flower: Green and Purple

Bloom Time: May-June

Fruit: Red berries in a large clump

Benefit for Wildlife and Insects: Birds and mammals will readily eat the berries.

Larval Host:

Special Note: Great and important plant to have in a woodland setting. Very cool in appearance.

Deer Resistant: Yes



Jacob's Ladder (*Polemonium reptans*)

Plant Characteristics

Plant Type: Forb

Light Requirement: Shade

Soil Moisture: Average-moist

Soil Type: Various. Likes lots of humus.

Size: 2ft

Flower: Blue

Bloom Time: May

Fruit:

Benefit for Wildlife and Insects: Great source of early nectar and pollen.

Larval Host:

Special Note: Adds vibrancy to a woodland habitat. Highly recommended.

Deer Resistant: Yes



Joe Pye Weed (*Eutrochium maculatum*)

Plant Characteristics

Plant Type: Forb

Light Requirement: Full-sun

Soil Moisture: Wet

Soil Type: Various

Size: 5-6ft

Flower: Pink/Purple

Bloom Time: July-August

Fruit:

Benefit for Wildlife and Insects: Awesome source of pollen and nectar.

Larval Host:

Special Note: Great plant for wet areas, but it will form large dense colonies.

Deer Resistant: Yes



June Grass (*Koeleria macrantha*)

Plant Characteristics

Plant Type: Grass

Light Requirement: Full-sun, Partial

Soil Moisture: Average-dry

Soil Type: Various, well-drained

Size: 2 feet

Flower:

Bloom Time: June

Fruit:

Benefit for Wildlife and Insects: Cover, food for birds and mammals.

Larval Host:

Special Note: Very well-behaved in the landscape. Great when planted en masse. Consider planting with Harebell or Prairie Phlox.

Deer Resistant: Yes



Leadplant (*Amorpha canescens*)

Plant Characteristics

Plant Type: Shrub

Light Requirement: Sun , Part Shade

Soil Moisture: Dry

Soil Type: Well-drained sandy or loamy.

Size: 1-3 feet.

Flower: Blue , Purple

Bloom Time: Jun , July

Fruit: Brown

Benefit for Wildlife and Insects: Nectar-insects (all sorts!), Browse, Fruit-mammals, Fruit-deer

Special Note: Fixes nitrogen in the soil. Highly recommended.

Deer Resistant: Maybe (conflicting information)



Little Bluestem (*Schizachyrium scoparium*)

Plant Characteristics

Plant Type: Grass

Light Requirement: Full-sun, Partial

Soil Moisture: Average-dry

Soil Type: Various, well drained

Size: 2-4 feet

Flower:

Bloom Time: August

Fruit:

Benefit for Wildlife and Insects: Cover, food source for birds and mammals especially in winter. Attracts butterflies.

Larval Host: Ottoe Skipper, Indian Skipper, Crossline Skipper, Dusted Skipper, Cobweb butterfly, Dixie skipper

Special Note: This well-behaved grass is a great addition to your landscape/habitat.

Deer Resistant: Yes



Maidenhair Fern (*Andiantum pendatum*)

Plant Characteristics

Plant Type: Fern

Light Requirement: Shade

Soil Moisture: Average-moist

Soil Type: Typical woodland. Lots of humus

Size: 1-3ft.

Flower: Fiddleheads may be red.

Bloom Time:

Fruit:

Benefit for Wildlife and Insects: Shelter and cover. Protect forest from erosion and moisture loss.

Larval Host:

Special Note: Ferns are one of nature's indicator species. Tells health of an area and what is likely to grow in a particular area of forest.

Deer Resistant: Yes



Maple-leaf Viburnum (*Viburnum acerifolium*)

Plant Characteristics

Plant Type:

Light Requirement: Partial-shade, Shade

Soil Moisture: Average

Soil Type: Various well-drained

Size: 5-6ft

Flower: White

Bloom Time: May-June

Fruit: Red- Dark Purple

Benefit for Wildlife and Insects: Highly attractive shrub for pollen and nectar. Birds and mammals feast on the nutritious berries.

Larval Host: Yes

Special Note: Will form a low attractive hedge. Use to fill open wooded spaces as an understory shrub.

Deer Resistant: Moderate-yes



Mayapple (*Podophyllum peltatum*)

Plant Characteristics

Plant Type: Forb

Light Requirement: Shade

Soil Moisture: Average-moist

Soil Type: Humus woodland soil

Size: 1-2ft

Flower: White

Bloom Time: April-May

Fruit: Green

Benefit for Wildlife and Insects: Good source of Nectar and pollen.

Fruit is readily eaten by mammals.

Larval Host:

Special Note: This hardy woodland species will form nice colonies in a woodland habitat. Leaves are persistent through most of season.

Deer Resistant: Yes



Meadowsweet (*Spiraea alba*)

Plant Characteristics

Plant Type: Shrub

Light Requirement: Full-sun, Partial-sun

Soil Moisture: Average-wet

Soil Type: Any soil that holds moisture

Size: 3-6ft

Flower: White

Bloom Time: June-August

Fruit:

Benefit for Wildlife and Insects: Great source of nectar and pollen.
Birds will eat the seeds.

Larval Host: Yes

Special Note: Very showy shrub for wet and sunny areas. Does not get very tall. Plant en masse for a very incredible hedge.

Deer Resistant: Yes



Prairie Rose/Michigan Rose (*Rosa setigera*)

Plant Characteristics

Plant Type: Vine

Light Requirement: Full-sun, Partial-sun

Soil Moisture: Average

Soil Type: various, well-drained

Size: 15ft

Flower: Pink

Bloom Time: May-June

Fruit: Red rose hips

Benefit for Wildlife and Insects: In addition to being a source of pollen and nectar, birds love the fruit of this vine.

Larval Host:

Special Note: As a climbing vine, it will travel along the ground until it finds a way to climb. Plant by a trellis, fence or pergola.

Deer Resistant: Yes



Miterwort (*Mitella diphylla*)

Plant Characteristics

Plant Type: Forb

Light Requirement: Shade

Soil Moisture: Average- wet

Soil Type: Loamy and rich with high organic matter.

Size: 2 feet

Flower: White

Bloom Time: May

Fruit:

Benefit for Wildlife and Insects: Early source of nectar and pollen.

Larval Host:

Special Note: Woodland ground cover with a very neat flower.

Deer Resistant: Yes



Musclewood (*Carpinus caroliniana*)

Plant Characteristics

Plant Type: Tree

Light Requirement: Part-sun, Shade

Soil Moisture: Average-Moist

Soil Type: Variable

Size: 15-30 feet. Very slow growing

Flower: Green and red

Bloom Time: March-April depending on temperature.

Fruit: Brown

Benefit for Wildlife and Insects: Birds and small mammals (including fox) eat the seeds and fruit. Cover.

Larval Host: Eastern Tiger Swallowtail, Striped hairstreak, Red-spotted Purple, Tiger swallow-tail.

Special Note: The trunk and branches are very distinct.

Deer Resistant: Moderate



Nannyberry (*Viburnum lentago*)

Plant Characteristics

Plant Type: Shrub

Light Requirement: Full-sun, Partial-sun

Soil Moisture: Average-wet (prefers)

Soil Type: Various average-wet soils.

Size: 12-25ft

Flower: White

Bloom Time: May

Fruit: Blue/Black

Benefit for Wildlife and Insects: Great nectar and pollen source.

Berries are a great source of food for mammals and birds alike.

Allows cover and nesting.

Larval Host: Yes

Special Note: This is a robust shrub that is well suited for Michigan.

Plant in wetter areas of the landscape. Plant together to form a nice hedge and protection for wildlife.

Deer Resistant: Yes



New England Aster (*Aster novae-anglia*)

Plant Characteristics

Plant Type: Forb

Light Requirement: Full-sun, Partial-sun

Soil Moisture: Average-wet

Soil Type: Various

Size: 3-6ft

Flower: Purple

Bloom Time: August

Fruit:

Benefit for Wildlife and Insects: Powerhouse for nectar and pollen. Insects of all walks and wings will flock to this species. A must have.

Larval Host: Yes

Special Note: Can be aggressive, so not one for small spaces. Is absolutely one of the showiest native species. Great for rain gardens or other wet speaces.

Deer Resistant: No



Common Ninebark (*Physocarpus opulifolius*)

Plant Characteristics

Plant Type: Shrub

Light Requirement: Full-sun, Partial-sun

Soil Moisture: Average-wet

Soil Type: Various

Size: 10ft

Flower: White

Bloom Time: May-June

Fruit:

Benefit for Wildlife and Insects: This showy shrubs attracts beneficials, pollinators and birds. Plant en masse to offer cover for wildlife.

Larval Host:

Special Note: This is a very showy shrub. Can be versatile in moisture requirements, but does better in moister locations.

Deer Resistant: Yes



NJ Tea (*Ceanothus americanus*)

Plant Characteristics

Plant Type: Shrub

Light Requirement: Full-sun, Partial-sun

Soil Moisture: Average-dry

Soil Type: Well-drained soils

Size: 3ft

Flower: White

Bloom Time: June-July

Fruit:

Benefit for Wildlife and Insects: Attracts butterflies and other beneficials. Seeds eaten by birds.

Larval Host: Yes

Special Note: Fixes nitrogen in the soil. Low mounding shrub that lends itself well to more formal plantings. Great habitat shrub.

Deer Resistant: Yes-maybe



Nodding Wild Onion (*Allium cernuum*)

Plant Characteristics

Plant Type: Forb

Light Requirement: Full-sun, Partial

Soil Moisture: Average

Soil Type: Various, well-drained

Size: 2 feet

Flower: Violet

Bloom Time: July-August

Fruit:

Benefit for Wildlife and Insects: Attracts hummingbirds, butterflies, bumble bees, and various beneficials

Larval Host:

Special Note: Great low growing plant that plays nicely in the landscape.

Deer Resistant: Yes



Obedient Plant (*Physostegia virginiana*)

Plant Characteristics

Plant Type: Forb

Light Requirement: Full-sun, Partial-sun

Soil Moisture: Average-wet

Soil Type: Moist, humus soils

Size: 4-6ft

Flower: Purple/Pink

Bloom Time: July-September

Fruit:

Benefit for Wildlife and Insects: Great plant for hummingbirds and butterflies. Also attracts pollinators and beneficials.

Larval Host:

Special Note: This robust plant is great for larger spaces. Consider planting in larger rain gardens or along ponds and rivers. Place in wet areas of the landscape

Deer Resistant: Yes



Paper Birch (*Betula papyifera*)

Plant Characteristics

Plant Type: Tree

Light Requirement: Full-sun, Partial

Soil Moisture: Average

Soil Type: Various except clay

Size: 30-60 Feet

Flower: Green

Bloom Time: April

Fruit:

Benefit for Wildlife and Insects: Attracts beneficial insects and a variety of birds. Important tree for a habitat.

Larval Host: Luna Moth, Eastern Tiger Swallowtail

Special Note: Very showy tree.

Deer Resistant: Yes



Pasture Rose (*Rosa carolina*)

Plant Characteristics

Plant Type: Shrub

Light Requirement: Full-sun, Partial-sun

Soil Moisture: Average-dry

Soil Type: Various well-drained

Size: 3ft

Flower: Pink

Bloom Time: June-July

Fruit: Rose hips

Benefit for Wildlife and Insects: Attracts pollinators and beneficials, butterflies and birds. Hips are very nutritious.

Larval Host:

Special Note: This will form nice colonies or low hedges. Give them space to grow. Can overwhelm small spaces.

Deer Resistant: Yes



Penn Sedge (*Carex pensylvanica*)

Plant Characteristics

Plant Type: Sedge

Light Requirement: Shade

Soil Moisture: Average

Soil Type: Various

Size: 1ft

Flower: Yellow

Bloom Time: April

Fruit:

Benefit for Wildlife and Insects: Nest building materials. Various beneficials eat the leaves and birds consume the seeds.

Larval Host:

Special Note: Use this sedge in a woodland habitat as a first layer. Its role in nature is as a living mulch.

Deer Resistant: Yes



Pin Oak (*Quercus palustris*)

Plant Characteristics

Plant Type: Tree

Light Requirement: Full-sun

Soil Moisture: Average-wet

Soil Type: Various that hold moisture

Size: 100ft

Flower: Green

Bloom Time: May

Fruit: Acorn

Benefit for Wildlife and Insects: Like other Oaks, it is an ecological powerhouse. Plant it and they will come!

Larval Host: Yes

Special Note: Found naturally growing in wetter areas. Do like-wise for best results. Does not handle high ph (alkaline) soils.

Deer Resistant: Moderate



Plantain Sedge (*Carex plantagenia*)

Plant Characteristics

Plant Type: Sedge

Light Requirement: Shade

Soil Moisture: Average-moist

Soil Type: Various woodland soils

Size: 1ft

Flower: Yellow

Bloom Time: April

Fruit:

Benefit for Wildlife and Insects: Nesting material and cover. Seeds eaten by birds.

Larval Host:

Special Note: Will form a nice base layer (ground cover) in a woodland setting.

Deer Resistant: Yes



Poke Milkweed (*Asclepias exaltata*)

Plant Characteristics

Plant Type: Forb

Light Requirement: Partial-sun, shade

Soil Moisture: Average

Soil Type: Loamy with high organic content.

Size: 4 feet

Flower: Violet-white

Bloom Time: June-July

Fruit:

Benefit for Wildlife and Insects: Great for pollinators and other beneficial insects.

Larval Host: Monarch

Special Note: A great Milkweed for woodland setting. Can also work in sunnier location as long as soil hold moisture.



Prairie Dock (*Silphium terebinthinaceum*)

Plant Characteristics

Plant Type: Forb

Light Requirement: Full-sun

Soil Moisture: Average-wet

Soil Type: various

Size: 6-10 feet

Flower: Yellow

Bloom Time: August-September

Fruit:

Benefit for Wildlife and Insects: Great source of pollen and nectar. Birds will eat the seeds.

Larval Host:

Special Note: This is a very large species that will spread. Best for larger wet spaces. Amazingly big leaves.

Deer Resistant: Yes, but deer may take a nibble here and there.



Prairie Dropseed (*Sporobolus heterolepis*)

Plant Characteristics

Plant Type: Grass

Light Requirement: Full-sun

Soil Moisture: Dry

Soil Type: Various wel-drained

Size: 3ft

Flower:

Bloom Time: August-October

Fruit:

Benefit for Wildlife and Insects: Food source for many insects. Nest building and cover for wild creatures.

Larval Host:

Special Note: A very manageable grass for home landscapes/habitats. Highly recommended.

Deer Resistant: Yes



Prairie Phlox (*Phlox pilosa*)

Plant Characteristics

Plant Type: Forb

Light Requirement: Full-sun, Partial-sun

Soil Moisture: Average-dry

Soil Type: Various.

Size: 1.5ft

Flower: Violet

Bloom Time: May-July

Fruit:

Benefit for Wildlife and Insects: An ideal plant for butterflies. Also supports many other pollinators.

Larval Host:

Special Note: Great plant for pollinator gardens. Plant densely to great a first layer in a sunny habitat. Very fragrant blooms that last a long time.

Deer Resistant: Yes



Prairie Smoke (*Geum triflorum*)

Plant Characteristics

Plant Type: Forb

Light Requirement: Full-sun, Partial-sun

Soil Moisture: Average

Soil Type: Various

Size: 2ft

Flower: Red/Pink

Bloom Time: May

Fruit:

Benefit for Wildlife and Insects: Primarily a nectar and pollen source. Bumble Bees frequent this species. Great plant for early in the season.

Larval Host:

Special Note: Will become a very striking ground cover if planted away from more aggressive species.

Deer Resistant: Yes



Prickly Pear (Opuntia humifusa)

Plant Characteristics

Plant Type: Forb/Cactus

Light Requirement: Full-sun, Partial-sun

Soil Moisture: Dry-average

Soil Type: Various

Size: 1ft

Flower: Yellow

Bloom Time: June

Fruit: Red

Benefit for Wildlife and Insects: Source of pollen and nectar.

Larval Host:

Special Note: A bit out of its native range in SE Michigan. UofM has it native to SW Michigan while other organizations list it as native to NE United States. Fruit is edible.

Deer Resistant: Yes



Purple Coneflower (Echinacea purpurea)

Plant Characteristics

Plant Type: Forb

Light Requirement: Full-sun, Partial

Soil Moisture: Average- dry

Soil Type: a wide variety.

Size: 3-5 feet

Flower: Reddish Purple

Bloom Time: July

Fruit:

Benefit for Wildlife and Insects: Butterflies love this species. Great for other pollinators as well. Song birds frequent this plant for its seeds

Larval Host:

Special Note: Great species. Highly recommended. Plays nicely with other plants.

Deer Resistant: Yes



Purple Love Grass (*Eragrostis spectabilis*)

Plant Characteristics

Plant Type: Grass

Light Requirement: Full-sun

Soil Moisture: Average-dry

Soil Type: Various

Size: 2ft

Flower: Purple

Bloom Time: August-November

Fruit:

Benefit for Wildlife and Insects: Food source for insects and some browse animals, and the insects are in turn a food source for birds and other creatures.

Larval Host:

Special Note: Can be very stunning when grown in large numbers. Will also spread freely if allowed.

Deer Resistant: Yes



Pussy Willow (*Salix discolor*)

Plant Characteristics

Plant Type: Shrub

Light Requirement: Sun

Soil Moisture: Moist-wet

Soil Type: Various wet soils.

Size: Around 20ft at maturity.

Flower: Color varies from white, yellow or green.

Bloom Time: Early spring

Fruit: Brown



Benefit for Wildlife and Insects: Early season harvest for songbirds, waterfowl and small mammals. Attracts early emerging pollinators.

Larval Host: Mourning Cloak, Viceroy

Special Note: Pussy Willow is thicket forming in the right conditions. Great for planting in a consistently wet space. Can overtake small landscapes. Willow, along with Oak and Cherry, are powerhouses in the ecological system.

Deer Resistant: Yes

Pussytoes (*Antennaria neglecta*)

Plant Characteristics

Plant Type: Forb

Light Requirement: Full-sun, Partial

Soil Moisture: Average-dry

Soil Type: Various

Size: 12 inches

Flower: White

Bloom Time: May-June

Fruit:

Benefit for Wildlife and Insects: Good early source of pollen and nectar.

Larval Host: Painted Lady butterfly

Special Note: Very low growing, it is a good choice for first layer ground cover in dry areas.

Deer Resistant: Yes



Quaking Aspen (*Populus tremuloides*)

Plant Characteristics

Plant Type: Tree

Light Requirement: Full-sun, Partial

Soil Moisture: Dry-wet (Not long term standing water)

Soil Type: Various

Size: 72 feet

Flower: Yellow

Bloom Time: April

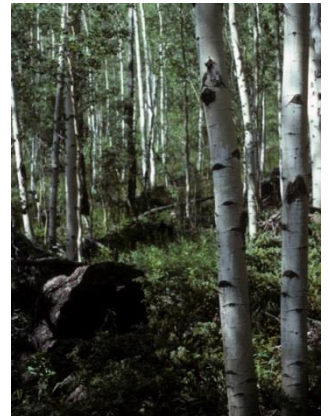
Fruit:

Benefit for Wildlife and Insects: Aspens are host to a wide array of birds, mammals, and butterflies. Seeds-granivorous birds, Browse

Larval Host: Eastern Tiger Swallowtail, Viceroy, Great ash sphinx

Special Note: Very versatile. Can handle most conditions except have roots constantly submerged. Striking bark and fall color. Great for habitat creation. Allow large stands to grow on larger properties.

Deer Resistant: No. Use repellent or fence off.



Queen of the Prairie (*Filipendula rubra*)

Plant Characteristics

Plant Type: Forb

Light Requirement: Full-sun, Partial-sun

Soil Moisture: Average-wet

Soil Type: Various moist soils

Size: 3-6ft

Flower: Pink

Bloom Time: July

Fruit:

Benefit for Wildlife and Insects: Primarily a source of pollen for native bees and other insects feeding on pollen.

Larval Host:

Special Note: It prefers a moist to wet setting and will form dense colonies in such situations. A very distinct plant and one of the showiest of our Michigan natives.

Deer Resistant: Yes



Rattlesnake Master (*Eryngium yuccaefolium*)

Plant Characteristics

Plant Type: Forb

Light Requirement: Full-sun, Partial-sun

Soil Moisture: Average-wet

Soil Type: Various well-drained

Size: 4 feet

Flower: White

Bloom Time: July-September

Fruit:

Benefit for Wildlife and Insects: Attracts many pollinators and beneficial insects. Big Black Wasps are frequent visitors.

Larval Host:

Special Note: Very interesting leaves and flowers. Super unique.

Deer Resistant: Yes.



Red Baneberry (*Actaea rubra*)

Plant Characteristics

Plant Type: Forb

Light Requirement: Shade

Soil Moisture: Average

Soil Type: Woodland soils

Size: 3ft

Flower: White

Bloom Time: May

Fruit: Red

Benefit for Wildlife and Insects: Attracts insects looking for pollen meals and birds will eat the fruit.

Larval Host:

Special Note: Toxic to humans, Still an excellent plant for a woodland habitat.

Deer Resistant: Yes



Red Cedar (*Juniperus virginiana*)

Plant Characteristics

Plant Type: Tree

Light Requirement: Full-sun, Partial-sun

Soil Moisture: Average-dry

Soil Type: Various well-drained.

Size: 75ft

Flower: Green

Bloom Time: May

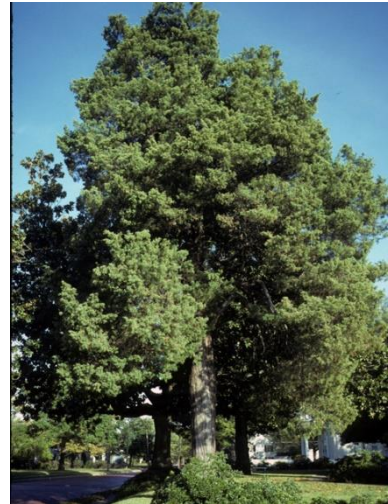
Fruit: Green/Brown

Benefit for Wildlife and Insects: Fruit is a great source of food for many birds and small mammals. Offers nesting and cover.

Larval Host: Yes

Special Note: Drought tolerant. Great tree for creating a privacy hedge.

Deer Resistant: Yes



Red Maple (Acer rubrum)

Plant Characteristics

Plant Type: Tree

Light Requirement: Full-sun, Partial-sun

Soil Moisture: Average

Soil Type: Various well-drained.

Size: 75-100ft

Flower: Red

Bloom Time: April

Fruit: Green/Red

Benefit for Wildlife and Insects: Many insects, birds and mammals use this tree for food, shelter and as a host for off-spring. Great tree to have

Larval Host: Yes

Special Note: Great tree to have in a habitat. Added bonus is that it is visually stunning.

Deer Resistant: Moderate



Red Oak (Quercus rubra)

Plant Characteristics

Plant Type: Tree

Light Requirement: Full-sun, Partial-sun

Soil Moisture: Average

Soil Type: Various well drained

Size: 100ft

Flower: Yellow/Green/Brown

Bloom Time: April

Fruit: Acorn

Benefit for Wildlife and Insects: Like other Oak, Red Oak is an ecological powerhouse. A must have.

Larval Host: Yes

Special Note: Do not prune trees during the active active growing season. This prevents Oak Wilt infestations.

Deer Resistant: Yes-maybe



Red Osier Dogwood (*Cornus sericea*)

Plant Characteristics

Plant Type: Shrub

Light Requirement: Full-sun, Partial-sun, Shade

Soil Moisture: Average-wet

Soil Type: Various soils that retain moisture.

Size: 12ft

Flower: White

Bloom Time: June

Fruit: White

Benefit for Wildlife and Insects: Birds and mammals eat the berries and insects come for the pollen and nectar.

Larval Host: Yes

Special Note: Plant is a wet area or typical garden soil. Very adaptive, but does best where there is moisture.

Deer Resistant: No



Red-berried Elder (*Sambucus racemosa*)

Plant Characteristics

Plant Type: Shrub

Light Requirement: Full-sun, Partial

Soil Moisture: Average to wet.

Soil Type: Various soils that hold moisture.

Size: 10-20 feet

Flower: White

Bloom Time: May-June

Fruit: Bright red berries

Benefit for Wildlife and Insects: Mammals and birds eat the berries. Pollinators are attracted to flowers. Offers cover for wildlife.

Larval Host:

Special Note: Use to create a thicket or as a specimen species.

Deer Resistant: Yes



Wild Oats/River Oats (*Chasmanthium latifolium*)

Plant Characteristics

Plant Type: Grass

Light Requirement: Part-sun to Shade.
Cannot handle full direct sun.

Soil Moisture: Average-wet

Soil Type: Variable moist soils.

Size: 2-4 feet

Flower: Green but reddish/brown once dry.

Bloom Time: June-Aug

Fruit: Brown seedheads

Benefit for Wildlife and Insects: Seeds eaten by small mammals and birds. Leaves provide graze for mammals. Stems and leaves used as nesting material by birds.

Larval Host: Pepper & salt skipper butterfly, Bells road side skipper butterfly, Bronzed roadside skipper butterfly

Special Note: Readily spreads, so may not be good for small landscapes. Great for mass plantings.

Deer Resistant: Yes



Rose Mallow (*Hibiscus moscheutos*)

Plant Characteristics

Plant Type: Forb

Light Requirement: Full-sun, Partial-sun

Soil Moisture: Average-wet

Soil Type: Various that retain moisture

Size: 3-6ft

Flower: Pink

Bloom Time: August

Fruit:

Benefit for Wildlife and Insects: Hummingbirds and other pollinators frequent this plant. Various caterpillars eat the leaves.

Larval Host:

Special Note: Very stunning flower. Great for use in a rain garden or in other wetter locations of the landscape.

Deer Resistant: Yes.



Rough Blazing Star (*Liatris aspera*)

Plant Characteristics

Plant Type: Forb

Light Requirement: Full-sun, Partial

Soil Moisture: Average-dry

Soil Type: Various

Size: 3-4 feet

Flower: Violet-purple

Bloom Time: July-August

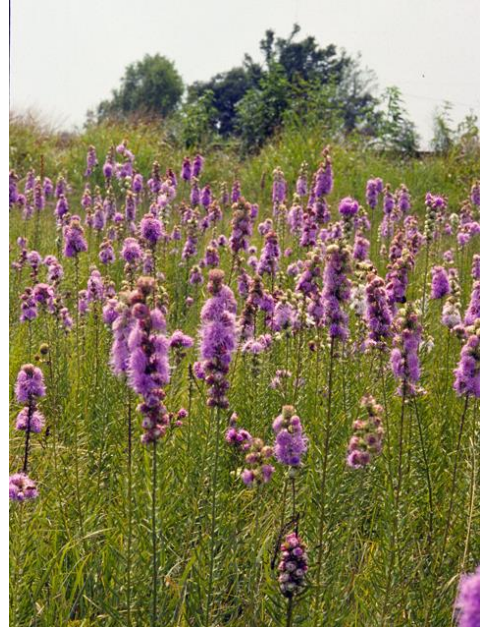
Fruit:

Benefit for Wildlife and Insects: A magnet for butterflies and other pollinators.

Larval Host:

Special Note: One of the most beautiful flowers. Plant en masse.

Deer Resistant: Yes



Round-leaved Ragwort (*Packera (Senecio) obovate*)

Plant Characteristics

Plant Type: Forb

Light Requirement: Full-sun, Partial-sun

Soil Moisture: Average

Soil Type: Various well-drained

Size: 2-3ft

Flower: Yellow

Bloom Time: May-June

Fruit:

Benefit for Wildlife and Insects: Great spring blooming plant that is a great source of nectar and pollen.

Larval Host: Yes

Special Note: This species will form a large colony that looks great in the spring. Interplant with other species.

Deer Resistant: Yes



Sand Cherry (*Prunus pumila*)

Plant Characteristics

Plant Type: Shrub

Light Requirement: Full-Sun, Partial-sun

Soil Moisture: Dry

Soil Type: Sandy

Size: 6ft

Flower: White

Bloom Time: May

Fruit: Cherries

Benefit for Wildlife and Insects: Attracts many various pollinators and beneficial insects. Cherries are eaten by many birds and mammals.

Larval Host: Yes

Special Note: This shrub grows in very specific locations such as dunes and sandy lake shores. Some variations grow more inland on sandy or gravelly out-croppings.

Deer Resistant: No



Sand Coreopsis (Coreopsis lanceolate)

Plant Characteristics

Plant Type: Forb

Light Requirement: Full-sun, Partial

Soil Moisture: Average-dry

Soil Type: Various

Size: 2 feet

Flower: Yellow

Bloom Time: June-August

Fruit:

Benefit for Wildlife and Insects: Great source of nectar and pollen.

Larval Host:

Special Note: Spreads mostly by reseeding. Very stunning in mass.



Serviceberry (*Amelanchier arborea*)

Plant Characteristics

Plant Type: Tree/Shrub

Light Requirement: Full-sun, Partial-sun

Soil Moisture: Average

Soil Type: Various well-drained

Size: 25ft

Flower: White

Bloom Time: April-May

Fruit: Small red fruit.

Benefit for Wildlife and Insects: Attracts a wide range of insects as a source of pollen and nectar. Many other insects and butterflies/moths use it as a host plant. Fruit is eaten many birds and mammals.

Important species to have in the landscape.

Larval Host: Yes

Special Note:

Deer Resistant: Moderate. Deer do browse the leaves and twigs.

Protection is wise.



Solidago speciose (Showy Goldenrod)

Plant Characteristics

Plant Type: Forb

Light Requirement: Full-sun, Partial

Soil Moisture: Average-dry

Soil Type: Average-dry

Size: 6 feet

Flower: Yellow

Bloom Time: August-Oct

Fruit:

Benefit for Wildlife and Insects: Goldenrod is a fantastic source of pollen and nectar. Pollinators flock to this species when in bloom late in the season.

Larval Host:

Special Note: Essential species to have in a habitat. Can spread quickly, so may not work well in smaller spaces. Try Zigzag Goldenrod or Bluestem Goldenrod in smaller landscapes.

Deer Resistant: Yes



Shrubby Cinquefoil (*Dasiphora fruticosa*)

Plant Characteristics

Plant Type: Shrub

Light Requirement: Sun, Part-Sun

Soil Moisture: Average to wet (not standing water)



Soil Type: Variable but does best in loamy soil.

Size: 3-4 feet

Flower: Yellow

Bloom Time: Long bloom time from June into the fall.

Fruit: Brown

Benefit for Wildlife and Insects: Long blooming shrub is great for many insects as a pollen and nectar source.

Larval Host:

Special Note: Consider using in lower laying areas that receives more moisture or in a rain garden.

Deer Resistant: Yes

Shrubby St. John's Wort (*Hypericum prolificum*)

Plant Characteristics

Plant Type: Shrub

Light Requirement: Full-sun, Partial

Soil Moisture: Average-dry

Soil Type: Well-drained

Size: 3-6 Feet

Flower: Yellow

Bloom Time: June-August

Fruit:

Benefit for Wildlife and Insects: This shrub attracts a wide range of pollinators and beneficial insects. A must for the landscape.

Larval Host:

Special Note: Plant as a low hedgerow or as a mass planting. Great for foundation planting as well.

Deer Resistant: Yes



Side-Oats Grama (*Bouteloua curtipendula*)

Plant Characteristics

Plant Type: Bunch Grass

Light Requirement: Full Sun

Soil Moisture: Average-Dry

Soil Type: Most soil types except clay.

Size: 2-3ft

Flower: Green with reddish brown accents

Bloom Time: August-September

Fruit: seed

Benefit for Wildlife and Insects: Food source for grazing animals but deer seem to avoid. Handles grazing pressure well.

Larval Host: Host for at least five types of skipper moths.

Special Note: Moderate grower. Plant amongst prairie flowers such as Black Eyed Susan, Prairie Phlox, Western Sunflower.

Deer Resistant: Yes



Silky Dogwood (*Cornus amomum*)

Plant Characteristics

Plant Type: Shrub

Light Requirement: Partial-sun, Shade

Soil Moisture: Average-wet

Soil Type: Various

Size: 10 feet

Flower: White

Bloom Time: June

Fruit: White berry

Benefit for Wildlife and Insects: Good source of pollen and nectar. Birds and mammals eat the berries. Cover for wildlife.

Larval Host:

Special Note: Great for a shaded woodland setting. Will form a thicket or hedge if allowed.

Deer Resistant: No. Protect with repellent or fencing.



Silver Maple (*Acer saccharinum*)

Plant Characteristics

Plant Type: Tree

Light Requirement: Full-sun, Partial-sun

Soil Moisture: Average-wet

Soil Type: Various

Size: 100ft

Flower: Red

Bloom Time: April

Fruit: Green/Brown

Benefit for Wildlife and Insects: Great source of early nectar and pollen. Seeds are eaten by many birds and mammals. This tree is also used by many as nesting habitat.

Larval Host: Yes

Special Note: This tree has a very positive impact on the ecosystem, but, since it is weak limbed, it can be problematic when growing near dwellings. With that in mind, plant only further from homes or other Structures.

Deer Resistant: Moderate



Smooth Aster (*Aster laevis*)

Plant Characteristics

Plant Type: Forb

Light Requirement: Full-sun, Partial

Soil Moisture: Average-dry

Soil Type: Various

Size: 4 feet

Flower: Blue-white

Bloom Time: August

Fruit:

Benefit for Wildlife and Insects: Birds eat the seeds and is a great source of nectar and pollen late in the season.

Larval Host: Pearl Crescent

Special Note: Asters are a must in any landscape. Along with their ecological impact, the flowers are fragrant and stunning.

Deer Resistant: Yes (but watch out for the rabbits!)



Spicebush(Lindera benzoin)

Plant Characteristics

Plant Type: Shrub

Light Requirement: Partial-sun, Shade

Soil Moisture: Average-wet

Soil Type: Various soil that holds moisture.

Size: 10ft

Flower: Yellow

Bloom Time: April-May

Fruit: Red berries

Benefit for Wildlife and Insects: Great source of early pollen and nectar. Berries are eaten by various birds and foliage eaten by larvae of other species.

Larval Host: Yes

Special Note: This is a great species for wet shady areas of your habitat. It has great spring flowers and is very well-behaved. Great replacement for the invasive Forsythia shrub.

Deer Resistant: Moderate-yes



Spiderwort (Tradescantia ohiensis)

Plant Characteristics

Plant Type: Forb

Light Requirement: Full-sun, Partial

Soil Moisture: Average-dry

Soil Type: Various

Size: 3 feet

Flower: Blue

Bloom Time: May-July

Fruit:

Benefit for Wildlife and Insects: Great source of nectar and pollen.

Larval Host:

Special Note: Readily self-sows. Can over-whelm a small landscape. Inter-plant with other opportunistic forbs to keep in check and to keep the landscape in bloom.

Deer Resistant: Yes



Spikenard (*Aralia racemose*)

Plant Characteristics

Plant Type: Forb

Light Requirement: Partial-sun, Shade

Soil Moisture: Average

Soil Type: Rich loamy soil.

Size: 3-6 feet

Flower: White

Bloom Time: July-August

Fruit: Reddish/purple berries

Benefit for Wildlife and Insects: Attracts beneficial insects. Birds and mammals eat the berries.

Larval Host:

Special Note: One of the tallest woodland plants. Produces large amounts of berries. Will grow larger in sunnier sites if soil stays moist.

Deer Resistant: Yes



Staghorn Sumac (*Rhus typhina*)

Plant Characteristics

Plant Type: Tree

Light Requirement: Full-sun, Partial-sun

Soil Moisture: Average-dry

Soil Type: Various well-drained

Size: 15-30ft

Flower: Green/Yellow

Bloom Time: April

Fruit: Red spikes with many berries. Much more striking appearance than flowers.

Benefit for Wildlife and Insects: Great source of nectar and pollen for many pollinators. Fruit is a great source of food when food from other species has been exhausted. Has great ecological benefit.

Larval Host: Yes

Special Note: Due to its aggressive spread, not well-suited for small landscapes. Consider for ecological restoration purposes.

Deer Resistant: No



Sugar Maple (*Acer saccharum*)

Plant Characteristics

Plant Type: Tree

Light Requirement: Full-sun, Partial-sun

Soil Moisture: Average

Soil Type: Various well-drained

Size: 100ft

Flower: Green

Bloom Time: April

Fruit: Green/Brown/Red

Benefit for Wildlife and Insects: Great source of early pollen and nectar. Seeds are great source of food for birds and mammals. Provides nesting habitat. Browsed by larger mammals like deer and elk.

Larval Host: Yes

Special Note: Fantastic canopy tree with great ecological impact. Source of maple syrup.

Deer Resistant: Moderate-no



Swamp Milkweed (*Asclepias incarnata*)

Plant Characteristics

Plant Type: Forb

Light Requirement: Full-sun, Partial

Soil Moisture: Average-wet

Soil Type: Various moist soils

Size: 4 feet

Flower: Purple-pink

Bloom Time: June-August

Fruit:

Benefit for Wildlife and Insects: Attracts a tremendous amount of pollinators and other beneficial insects.

Larval Host: Monarch

Special Note: Great for wet areas, water's edge, rain gardens. This species will grow in average soil as well if it holds enough moisture. Will volunteer readily.

Deer Resistant: Moderate-yes



Tall Tickseed (*Coreopsis tripteris*)

Plant Characteristics

Plant Type: Forb

Light Requirement: Full-sun, Partial

Soil Moisture: Average-dry

Soil Type: Various

Size: 6 feet

Flower: Yellow

Bloom Time: July-September

Fruit:

Benefit for Wildlife and Insects: A magnet for pollinators and beneficial insects.

Larval Host:

Special Note: A very tall and showy plant. Makes a great background planting or privacy screen.

Deer Resistant: Yes



Tamarack (*Larix laricina*)

Plant Characteristics

Plant Type: Tree

Light Requirement: Full-sun, Partial

Soil Moisture: Average-wet.

Soil Type: Various as long as it holds moisture.

Size: 40-75 feet

Flower: Reddish brown

Bloom Time: April

Fruit: Cone

Benefit for Wildlife and Insects: Seeds are a favorite of crossbills, small mammals and the buds are eaten by spruce grouse. Tamaracks are often used as nesting sites.

Larval Host: Columbia Silk Moth

Special Note: This tree actually loses its needles every season, turning a stunning yellow in fall. Plant is wetter areas of the landscape. In average moisture areas, make sure the soil retains the moisture well.

Deer Resistant: Yes



Tall Thimbleweed (*Anemone virginiana*)

Plant Characteristics

Plant Type: Forb

Light Requirement: Full-sun, Partial

Soil Moisture: Average-dry

Soil Type: Various

Size: 3 feet

Flower: White

Bloom Time: June-August

Fruit: Seed heads

Benefit for Wildlife and Insects: Pollen and nectar source.

Larval Host:

Special Note: In the fall, seeds emerge along with a cottony fluff lending fall and winter interest.

Deer Resistant: Yes



Turtlehead (*Chelone glabra*)

Plant Characteristics

Plant Type: Shrub

Light Requirement: Full-sun, Partial-sun

Soil Moisture: Average-wet

Soil Type: Various that holds moisture.

Size: 3-6ft

Flower: White

Bloom Time: August-September

Fruit:

Benefit for Wildlife and Insects: Great source of nectar and pollen for many insects.

Larval Host: Yes

Special Note: Great plant to use in rain garden or naturally wet areas. Can also be used in average soil if it has ability to retain moisture.

Deer Resistant: Yes



Virginia Bluebells (*Mertensia virginica*)

Plant Characteristics

Plant Type: Forb

Light Requirement: Shade

Soil Moisture: Average

Soil Type: Various well-drained

Size: 1-2ft

Flower: Blue

Bloom Time: April-May

Fruit:

Benefit for Wildlife and Insects: A very wide range of insects visit this early spring bloomer. Provides great early ground cover.

Larval Host: Yes

Special Note: This grows in large low growing colonies that are incredible to see. Companion plant with other species since Bluebells goes dormant soon after blooming.

Deer Resistant: Yes



Virginia Creeper (*Parthenocissus quinquefolia*)

Plant Characteristics

Plant Type: Vine

Light Requirement: Full-sun to Shade

Soil Moisture: Average-dry

Soil Type: Various well-drained

Size:

Flower: Green

Bloom Time: July-August

Fruit: Blue

Benefit for Wildlife and Insects: Source of pollen and nectar. Leaves are a food source for many insects. Berries are a great source of food for many birds.

Larval Host: Yes

Special Note: This is a very robust vine that will quickly spread. Not the best choice for small landscapes. Great ecologically, but please consider your space.

Deer Resistant: Yes



Virgins Bower (*Clematis virginiana*)

Plant Characteristics

Plant Type: Vine

Light Requirement: Full-sun, Partial

Soil Moisture: Average. Must retain moisture.

Soil Type: Various

Size: 12 feet. Roots where it touches soil to start a new vine.

Flower: White

Bloom Time: August

Fruit:

Benefit for Wildlife and Insects: Primarily a pollen and nectar source.

Larval Host:

Special Note: A fast grower that will spread. Acts as a ground cover when it cannot climb.

Deer Resistant: Yes



Western Sunflower (*Helianthus occidentalis*)

Plant Characteristics

Plant Type: Forb

Light Requirement: Full-sun- Partial

Soil Moisture: Average-dry

Soil Type: Various

Size: 2-4 feet

Flower: Yellow

Bloom Time: August-September

Fruit:

Benefit for Wildlife and Insects: Great source of pollen and nectar.

Small song birds browse and eat the seeds.

Larval Host:

Special Note: A more well-behaved sunflower. Highly recommended.

Deer Resistant: Yes



Thuja occidentalis (Eastern White Cedar)

Plant Characteristics

Plant Type: Tree

Light Requirement: Full-sun, Partial-sun

Soil Moisture: Average-wet

Soil Type: Various with moisture retention.

Size: 50ft

Flower:

Bloom Time:

Fruit: Yellow/Brown



Benefit for Wildlife and Insects: A wide range of insects use this species as a food source. Provides cover and nesting habitat for many birds and mammals.

Larval Host: Yes

Special Note: This is a great tree to grow when developing your home habitat.

Deer Resistant: Yes

White Oak (Quercus alba)

Plant Characteristics

Plant Type: Tree

Light Requirement: Full-sun

Soil Moisture: Average

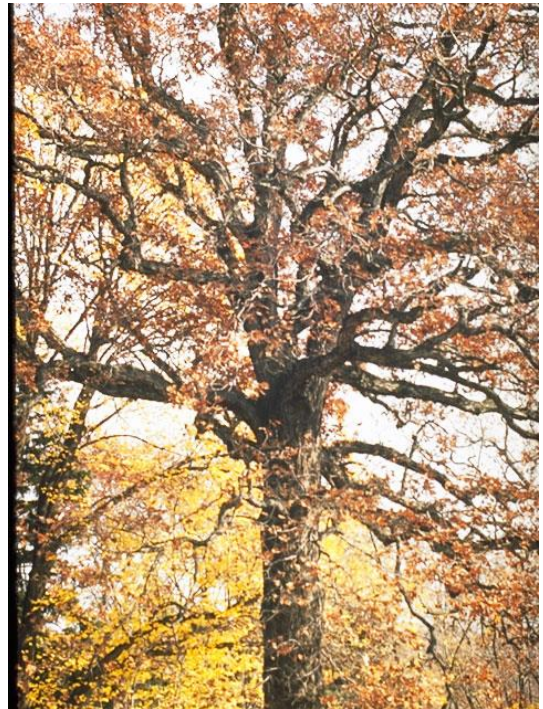
Soil Type: Various

Size: 85 feet

Flower: Green

Bloom Time: May

Fruit: Acorn



Benefit for Wildlife and Insects: Oak is one of the most important species. It is a food source and larval host for over 400 species.

Larval Host: Many butterflies and moths

Special Note: Bur Oak is resistant to Oak Wilt. Never prune spring-fall.

Want to help save the planet? Plant an Oak!

Deer Resistant: Not really. Use repellent or put up fencing until it gets big enough.

White Pine (*Pinus strobus*)

Plant Characteristics

Plant Type: Tree

Light Requirement: Full-sun, Partial-sun

Soil Moisture: Average-dry

Soil Type: Various well-drained

Size: 100ft

Flower:

Bloom Time:

Fruit: Cones

Benefit for Wildlife and Insects: Source of food for many birds, mammals and insects. Also a popular nesting place for many creatures such as squirrels.

Larval Host: Yes

Special Note: A tree of the boreal forests. More typically at home in northern half of MI including the UP. Naturally found in southern half of the state along Lake Michigan. Most White Pine in lower half of the state were planted by people as opposed to naturally occurring.

Deer Resistant: Yes



White Snakeroot (*Ageratina altissima*)

Plant Characteristics

Plant Type: Ford

Light Requirement: Partial-sun, Shade

Soil Moisture: Average-wet

Soil Type: Various

Size: 2-4 feet

Flower: White

Bloom Time: August-fall

Fruit: Wind-blown seeds.

Benefit for Wildlife and Insects: Pollinators are attracted to this species.

Larval Host: Yes.

Special Note: This is an important species as its late bloom time is important as food becomes scarce this time of year. Spreads by seed and rhizomes. Can form good sized colonies.

Caution: This plant does contain a toxin that is poisonous to mammals in certain quantities. Wild animals know not to eat this plant, but household pets may not. It is recommended not to plant this if your pet browses on vegetation in the garden.

Deer Resistant: Yes



White Wild Indigo (Baptisia Alba)

Plant Characteristics

Plant Type: Forb

Light Requirement: Full-sun, Partial

Soil Moisture: Average-dry

Soil Type: Well-drained, loamy

Size: 3-5 feet

Flower: White

Bloom Time: June-July

Fruit: Pods

Benefit for Wildlife and Insects: Pollinators are attracted to this species.

Larval Host:

Special Note: Great vibrant addition to the landscape. Part of the pea family, fixes nitrogen.

Deer Resistant: Yes



Whorled Milkweed (*Asclepias verticillata*)

Plant Characteristics

Plant Type: Forb

Light Requirement: Full-sun, Partial

Soil Moisture: Average-dry

Soil Type: Various well drained soils

Size: 2 feet

Flower: White

Bloom Time: July-August

Fruit:

Benefit for Wildlife and Insects: Attracts a wide range of pollinators and beneficial insects.

Larval Host: Monarch

Special Note: Lower growing Milkweed, but it will readily spread.

Deer Resistant: Yes, but some information says deer and rabbits may browse it.

Deer Resistant: Yes



Wild Columbine (*Aquilegia canadensis*)

Plant Characteristics

Plant Type: Forb

Light Requirement: Partial-Sun, Shade.

Soil Moisture: Average

Soil Type: Well-drained sandy or loamy. Does not do as well in heavy soils.

Size: 2 feet

Flower: Red and yellow

Bloom Time: April-June

Fruit:

Benefit for Wildlife and Insects: One of the first plants to provide nectar in the spring for bees, butterflies, and hummingbirds. Seeds consumed by finches and buntings

Larval Host: Columbine Duskywing

Special Note: Although perennial, Columbine increases rapidly by self seeding. Will grow among Pine trees.

Deer Resistant: Yes



Wild Geranium (Geranium maculatum)

Plant Characteristics

Plant Type: Forb

Light Requirement: Shade, Partial

Soil Moisture: Average

Soil Type: Various

Size: 1-2 feet (low and mounding)

Flower: Violet

Bloom Time: April-June

Fruit: Seed pods

Benefit for Wildlife and Insects: Seeds attract various birds. Browsed by various animals including deer. Good source of pollen and nectar.

Larval Host:

Special Note: Spreads very well. Use this awesome plant to create a base layer in a woodland setting.

Deer Resistant: Moderate. Deer do browse this plant, but it also spreads well. This will allow the species to thrive even with deer as long initial plantings are protected.



Wild Ginger (*Asarum canadense*)

Plant Characteristics

Plant Type: Forb

Light Requirement: Shade

Soil Moisture: Average

Soil Type: Various well-drained

Size: >1ft

Flower: Purple/Brown

Bloom Time: May

Fruit:

Benefit for Wildlife and Insects: Insects, specifically ants, will eat the seeds and disperse them. Source of pollen and nectar.

Larval Host: Yes

Special Note: This is a great ground cover for a woodland garden.

Deer Resistant: Yes



Wild Lupine (*lupines perennis*)

Plant Characteristics

Plant Type: Forb

Light Requirement: Full-sun, Partial

Soil Moisture: Average-dry

Soil Type: Well-drained soils

Size: 2 feet

Flower: Blue-purple

Bloom Time: May- June

Fruit:

Benefit for Wildlife and Insects: Hummingbirds, bumble bees and butterflies. Attracts many other pollinators and beneficial insects.

Larval Host: Karner Blue butterfly (endangered), Frosted Elfin

Special Note: Fixes nitrogen in the soil.

Deer Resistant: Yes



Wild Petunia (Ruellia humilis)

Plant Characteristics

Plant Type: Forb

Light Requirement: Full-Sun, Partial

Soil Moisture: Average-dry

Soil Type: Various

Size: 1-2 feet

Flower: Violet-purple

Bloom Time: June-August

Fruit:

Benefit for Wildlife and Insects: Great source of pollen and nectar

Larval Host: Larval food plant for the Buckeye and several other butterfly species.

Special Note: Readily reseeds. As a low growing plant, interplant with others and use in mass plantings. Great ground cover.

Deer Resistant: Yes



Wild Senna (*Senna hebecarpa*)

Plant Characteristics

Plant Type: Forb

Light Requirement: Full-sun, partial

Soil Moisture: Average-wet

Soil Type: Various

Size: 3-5 feet

Flower: Yellow

Bloom Time: July-August

Fruit:

Benefit for Wildlife and Insects: Attracts bees, butterflies and hummingbirds as nectar source.

Larval Host: Cloudless sulphurs

Special Note: Some landscapers grow this as a hedgerow.

Deer Resistant: Yes



Wild Strawberry (*Fragaria virginiana*)

Plant Characteristics

Plant Type: Forb

Light Requirement: Full-sun, Partial

Soil Moisture: Average-dry

Soil Type: Various

Size: ~6 inches

Flower: White

Bloom Time: April-May

Fruit: Red berry



Benefit for Wildlife and Insects: Great source of nectar and pollen.

Berries eaten by mammals and birds alike (including humans)

Larval Host: Gray Hairstreak, Grizzled Skipper

Special note: Use this as a base layer ground cover. Will cover large spaces quickly.

Deer Resistant: Yes

Ilex verticillata (Winterberry/Michigan Holly)

Plant Characteristics

Plant Type: Shrub

Light Requirement: Full-sun, Partial-sun

Soil Moisture: Average-wet

Soil Type: Various that retain moisture

Size: 5-12ft

Flower: White

Bloom Time: June

Fruit: Red Berries



Benefit for Wildlife and Insects: Good source of pollen and nectar. Berries become an important food during winter when other sources are exhausted.

Larval Host: Yes

Special Note: This native Holly has very showy berries and is a great plant to grow in wetter areas of the landscape. Plant in pairs to properly pollinate since there are male and female shrubs.

Deer Resistant: Moderate

Wood Poppy (*Stylophorum diphyllum*)

Plant Characteristics

Plant Type: Forb

Light Requirement: Shade

Soil Moisture: Average

Soil Type: Loamy with high organic matter.

Size: 2 feet

Flower: Yellow

Bloom Time: April-May

Fruit: Large pods

Benefit for Wildlife and Insects: Source of pollen and nectar. Small mammals eat the seeds.

Larval Host:

Special Note: Spreads quickly and stays low. Great ground cover. Showy flowers.

Deer Resistant: Yes



Woodland Joe-Pye (*Eupatorium purpureum*)

Plant Characteristics

Plant Type: Forb

Light Requirement: Full-sun, Partial-sun

Soil Moisture: Average-wet

Soil Type: Various moist soils

Size: 4-6 feet

Flower: Pale purple

Bloom Time: July-August

Fruit:

Benefit for Wildlife and Insects: Attracts many pollinators and beneficial insects.

Larval Host:

Special Note: Great for use in a rain garden or consistently wet/moist spaces.

Deer Resistant: Yes



Woodland Phlox (*Phlox divaricata*)

Plant Characteristics

Plant Type: Forb

Light Requirement: Shade

Soil Moisture: Average

Soil Type: Various well-drained

Size: 1ft

Flower: Blue

Bloom Time: May

Fruit:

Benefit for Wildlife and Insects: Great source of early nectar and pollen. Leaves are also eaten by various insects.

Larval Host:

Special Note: Will form a nice and colorful ground cover in a woodland habitat.

Deer Resistant: Yes



Yarrow (*Achillea millefolium*)

Plant Characteristics

Plant Type: Forb

Light Requirement: Full-sun, Partial

Soil Moisture: Average-dry

Soil Type: Various

Size: 2-3 feet

Flower: White

Bloom Time: July-August. Flowers stay intact through winter

Fruit:

Benefit for Wildlife and Insects: Nectar and pollen source

Larval Host:

Special Note: Very drought tolerant. Will spread readily, so may not be best for small landscapes.

Deer Resistant: Yes



Yellow Coneflower (Ratibida pinnata)

Plant Characteristics

Plant Type: Forb

Light Requirement: Full-sun

Soil Moisture: Dry-Average

Soil Type: Various

Size: 4-6 feet

Flower: Yellow

Bloom Time: July-September

Fruit: Large seed head.

Benefit for Wildlife and Insects: Great source of pollen and nectar.

Birds eat the seeds.

Larval Host:

Special Note: Spreads readily so it may overwhelm small landscapes.

Good source of food for birds over winter. Do not cut back until spring.

Deer Resistant: Yes



Zigzag Goldenrod (*Solidago flexicaulis*)

Plant Characteristics

Plant Type: Forb

Light Requirement: Partial-sun, Shade

Soil Moisture: Average

Soil Type: Various with high organic content that holds moisture.

Size: 2 feet

Flower: Yellow

Bloom Time: August-November

Fruit:

Benefit for Wildlife and Insects: Great source of pollen and nectar late in the season. Small mammals and birds eat the seeds.

Larval Host:

Special Note: Will spread, but smaller size makes it less imposing. Very important to include in your habitat.

Deer Resistant: Yes

