



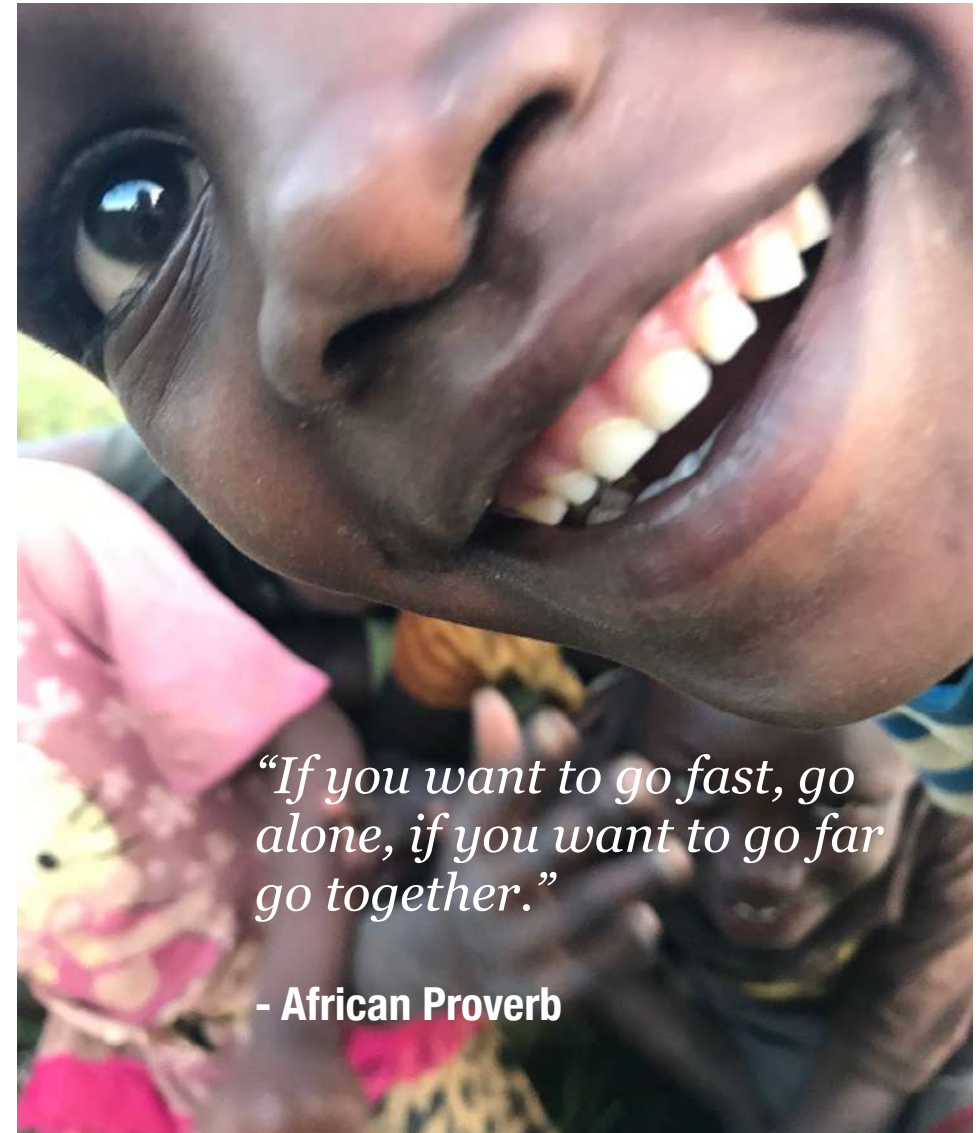
PROMISEHUB

365 days of

Vision, growth & gratitude



- **THANK YOU!**
- **OUR MISSION**
- **OUR APPROACH**
- **THE HUB**
- **LEARNING MODULES**
- **YEAR IN A REVIEW**
- **NAKIVALE, UGANDA**
- **INITIAL ASSESSMENT TRIP ;)**
- **LOCAL IMPACT TEAM**
- **SECOND ASSESSMENT TRIP**
- **CONSTRUCTION BEGINS ;);)**
- **FUNZI TRAINING**
- **DRONE TRAINING**
- **PROMISE HUB EXPRESS**
- **OUTLOOK 2019**
- **TEAM**
- **PARTNER**
- **GET INVOLVED**



“If you want to go fast, go alone, if you want to go far go together.”

- African Proverb



THANK YOU

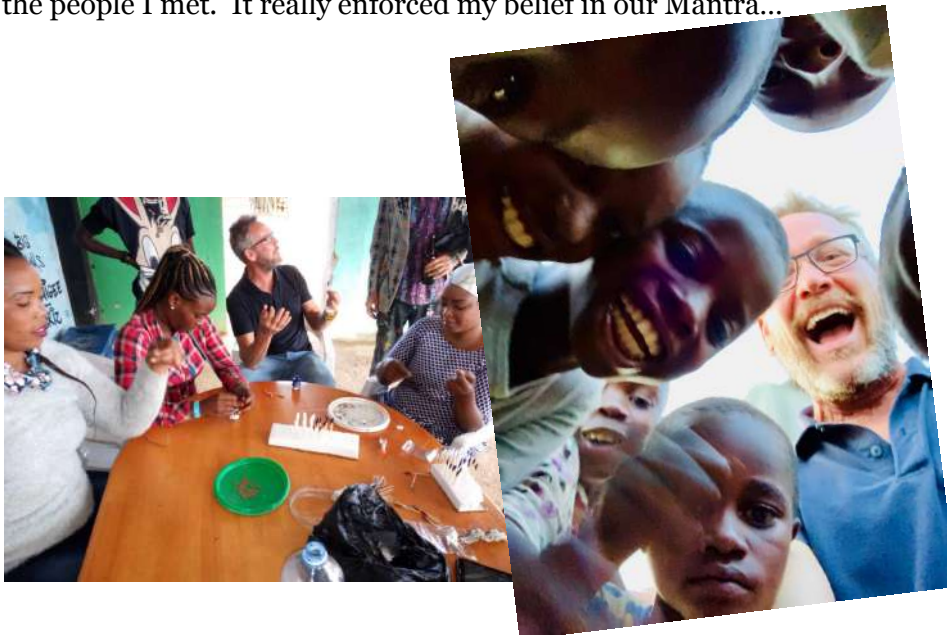
365 days of fulfilled promises

Dear all,

I'd like to begin by thanking each member of the team, Advisory Board, all of our amazing partners and our friends & families for their contributions throughout these past 365 days. It was an amazing year and we truly could not have done it without you! What was a dream is now a reality.

Special thanks to Diana and Madelynn and George and Aape and Mike who specifically brought Nakivale to the table, making it home to our first Promise Hub.

I was fortunate to be able to visit and spend some time in Nakivale and was impressed with the quality, intelligence, enthusiasm and drive of the people I met. It really enforced my belief in our Mantra...



“Given tools and encouragement, a community will self-organize and discover emergent solutions to their problems.” – Sugata Mitra

Having constructed a facility and trained the trainers, we must now further develop the two specific tools that make Promise Hub unique and valuable. The Promise Hub Express, our Speedy Premium Shipping service, and our digital wallet.

To do that, we will rely on the abilities of the local staff to build and integrate these powerful, transformative tools into their Hub.

Once completed, we can focus on identifying local businesses to foster digital marketing and ultimately selling and creating income and jobs!

We have special challenges, but we also have unique strengths.

This year will test our faith in our concept, it will test our belief in ourselves and it will test the strengths and capabilities of our team in Nakivale.

I have an unshakeable belief in all these things!

Onward we go... to coin a phrase from our advisory board member Aape...”instead of making things better, let us build better things.”

That, dear Aape, is exactly what we are doing.

Thank you,

Dave





THANK YOU

The Power of Unity

This 365 days in review are a year of abundance to me. It has been full of magic, emotions, fulfilled wishes, heartwarming stories, instructive experiences, and more than ever the proof that there are more uniting facts amongst humanity than dividing.

I am incredibly proud that we believe in the power of unity and therefore our belief in the unique set of talents in each and every one of us is unbreakable! At Promise Hub, we realize the shocking uneven distribution of opportunities to people in need around the globe and that many of the old concepts and stereotypes about impoverished regions and their inhabitants have not changed at all. So, our mission is not just to empower people with the right set of opportunities, but also to spark them the courage and willingness within them to work independently and conscientiously.

We focused all our energy on finding some location somewhere on planet earth to start implementing, learning and testing our approach. We discovered that breathtaking and perfect location in Nakivale Refugee Settlement in Uganda. We were blessed to have also found a fantastic community leader to empower us to implement the first Promise Hub with the excellent support of a tremendous group of local change-makers to construct the Hub and fill it with life. They also created a local team and attracted the first cohort of our future Promise Hub Hero`s. What a great achievement by enthusiastic people who believe in our mutual mission.

All of this has been guided by the African Proverb: "If you want to walk fast, walk alone. If you want to walk far, walk together". We have learnt from our local team to truly listen to their needs and that no matter what you do, each and every one of them follows an unwritten rule: Family First. I am in endless awe to observe the change of a space



formerly filled with self-doubt and disbelief to now fully bloom into an area of creation and empowerment by supporting this change-makers to expand their territory of action. From local to global.

With the arrival of the first test package in Nakivale via our own Promise Hub Speedy Premium Shipping, I cried tears of happiness. I knew that this single package has the potential to impact and catapult our mission to the next level of access to the global market and opportunities.

I am in deep gratitude for all the amazing human beings who work with us every single day to sharpen our mission.

Together we can make this world a better place. May the magic continue throughout 2019!

Diana





THANK YOU

Never doubt that a small group of thoughtful, committed citizens can change the world; indeed, it's the only thing that ever has.

Margaret Mead

I am extremely proud that we keep the promise to Promise.

Thanks to the amazing local impact team for their inspiring efforts to help our mission to bring digital opportunity to where it is needed most!

10 years ago, Diana, Aape and I where in a castle in the South of Berlin and envisioned a School in a box, we held keynotes about education by all and patted an empty shipping container red with a big heart to fill it with ideas and inspire workshop ideation. 2 years ago, David and I were standing on the shores of a frozen Lake in Minnesota (Dave barefoot, of course) and envisioned to take the container idea of a clinic for refugees in Germany to an entrepreneur education concept. A truly exponential idea and an old idea. Can we actually play in the league of ideas that impact millions of people some day? Yes we can.

Together with Mike's network and the amazing efforts of Diana, Madelynn, Erich and the local impact team we now have a roof over our heads in Nakivale, Uganda – I am in awe about this amazing milestone of the last year. What I love most is the cross-pollination of dreamers and doers, artists and makers, entrepreneurs and venture enthusiasts. Together we change the world. Together we are making good on our promise to Promise, the girl we met in the refugee camp of 1 million people + in Bequa valley, Lebanon. Her promise was that she will not be labelled a refugee forever, she has aspirations and dreams to grow up as a kid and into a world of opportunities. Together, we can start small, make impact, and help scale our dreams.



I can't wait to visit the Promise Hub in Nakivale finally this year!

Namaste,

Harald





THANK YOU

My journey with Promise Hub

It's amazing how fast everything started.

I first met Diana and Madelynn through my friend Mike Zuckerman exactly one year ago. Little did I know about their mission to bring Promise Hub to Nakivale.

I remember that we had a meeting in a Somali restaurant just after Diana had shown me the Promise Hub video on her phone. I was amazed to see that the mission and vision was so in line with what I was most passionate about: convincing, motivating and training young refugees to become social entrepreneurs instead of only focusing on resettlement.

Throughout these past 365 days, although we had some challenges through all of the learning experiences, I saw many accomplishments and exciting moments in our Promise Hub journey including:

- Identifying young motivated people within the community who became the Local Impact Team members
- Training the local team members in mentorship
- Taking the FUNZI online course and getting the graduation certificates
- Building the Promise Hub bottle house
- Having an exciting drone training session about how to maintain and fly drones
- Obtaining good access to the internet
- Holding various business sessions among the mentors and among the Opportunigee scholars

And now, we will see our greatest accomplishment yet; launching the Hub!

For me, Promise Hub can be the most efficient solution to tackling the poverty felt in many African countries affected by war or violence. When I came to Nakivale with my younger brother in 2010 there was only one word that every refugee was excited to hear: resettlement. Many people here talked about it to a sort of paradise on earth. After 4 years of disappointment and trauma I had realized that resettlement, having leaving as an end goal of with no other plan, was not for everyone.

One of the biggest challenges we've faced in that camp is unemployment. Many refugees are job seekers, but job opportunities in Uganda are scarce, for both refugees and nationals. The most viable option to resolve this issue was to create your own job, to become an entrepreneur. But entrepreneurs in Nakivale often face other challenges such internet access to reach outside markets or sell products online, sending products outside Nakivale and an inability to receive online payments. Promise Hub can solve all of these challenges; by providing entrepreneurs in the refugee settlement the ability to produce and sell their products everywhere in the world, our model benefits the refugees and even improving the local economy. Offering all the knowledge, tools and encouragement someone needs to be successful is an ambitious promise to make, but that's exactly what we do.



Patrick Muvunga Trickpa



OUR MISSION



OUR MISSION

To empower local entrepreneurs with digital tools and encouragement to advance the creation of 1 billion new jobs in the next 30 years where they are needed most.

We migrate opportunity to people across the globe to support them in strengthening their abilities to generate income, and add sustainable value to their local communities.



3.0 B people living on less than
\$2.50 per day.

68.5 M people facing
involuntary migration
worldwide, escaping
the following:

- WAR
- PERSECUTION
- POVERTY
- CLIMATE CHANGE



THE PROBLEM

6.0 B

people lack access to high speed internet.

38 %

of the world's population , are currently unbanked.

52 %

of adults globally have sent or received digital payments in the last year.



OUR APPROACH

We have an unwavering belief in the innate talents and abilities of our fellow human beings to succeed in this digital age. We believe that every individual has dreams that can be realized.

Our innovative, human-centric approach begins by fostering an open environment. All people are encouraged to explore digital opportunities and harness their passion and purpose in order to become the entrepreneurs and change-makers they were already meant to be. In so doing, they are able to create jobs, a sustainable local economy and further opportunities for their communities.





OUR APPROACH

In collaboration with the local community, we create spaces that include access to entrepreneurial education, local and remote mentorship, and digital tools.



CURRICULUM

Our self-guided education methodology encourages individuals to discover their passion and purpose, and transform them into local job creation.

MENTORSHIP

Promise Hub students receive free access to a global network of mentors online. Local community leaders are given mentorship training to encourage sharing of knowledge.

TOOLS

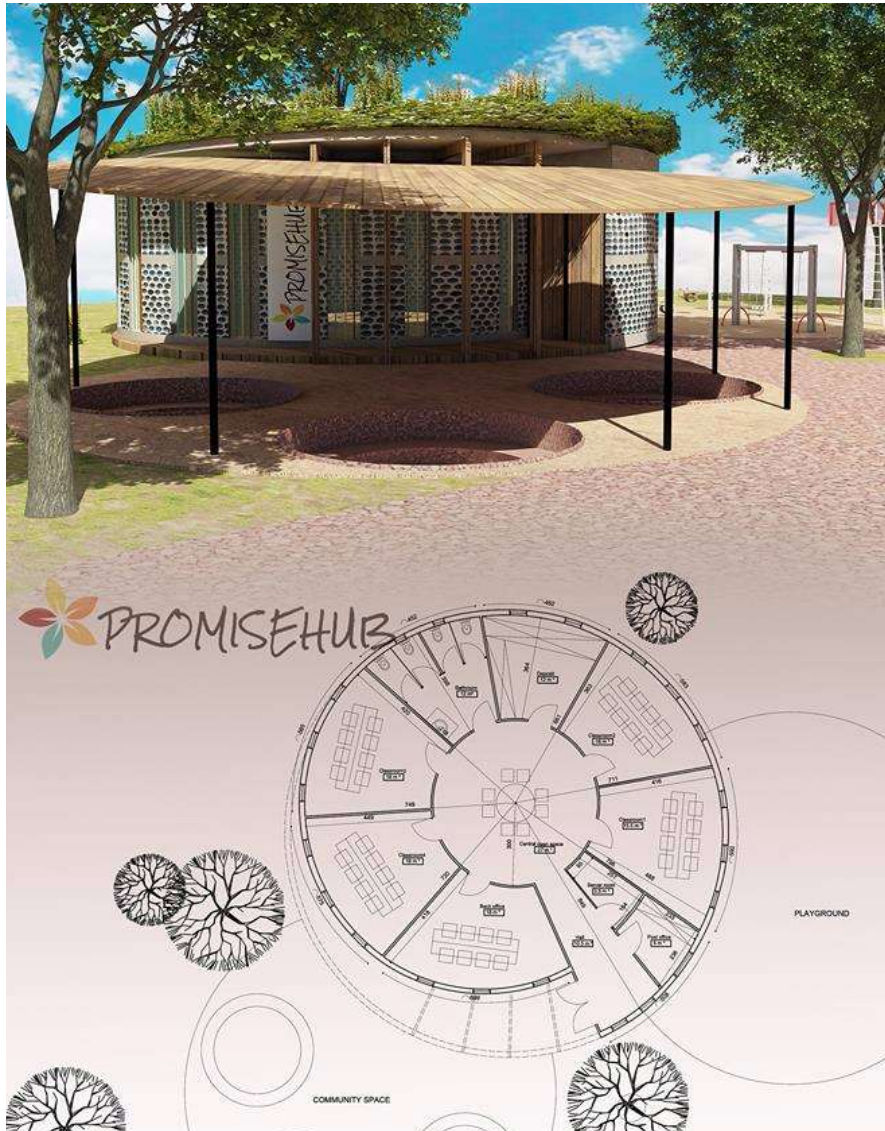
With access to a wide range of technology partners, each Hub comes equipped with both the hardware and digital tools to ideate, develop and launch a business.

INFRASTRUCTURE

Each Hub has access to internet connectivity, banking, a shipping and logistics platform, and e-commerce tools to inspire, educate, and expand the reach of entrepreneurial endeavors.



THE HUBS



ACCESSIBLE

We ensure that the hub is close enough to both human and natural resources. It should be secure, easy to access and use without any hindrance.

ADAPTABLE

The hub must be able to perform more elaborate functions, other than meetings. It should satisfy the need to spark insightful discussions, carry out various workshops and serve as a housing facility.

FUNCTIONAL

The hub must be practical and useful. Power, internet, tables, chairs, laptops and additional tools needed must be made available.

LOW-COST

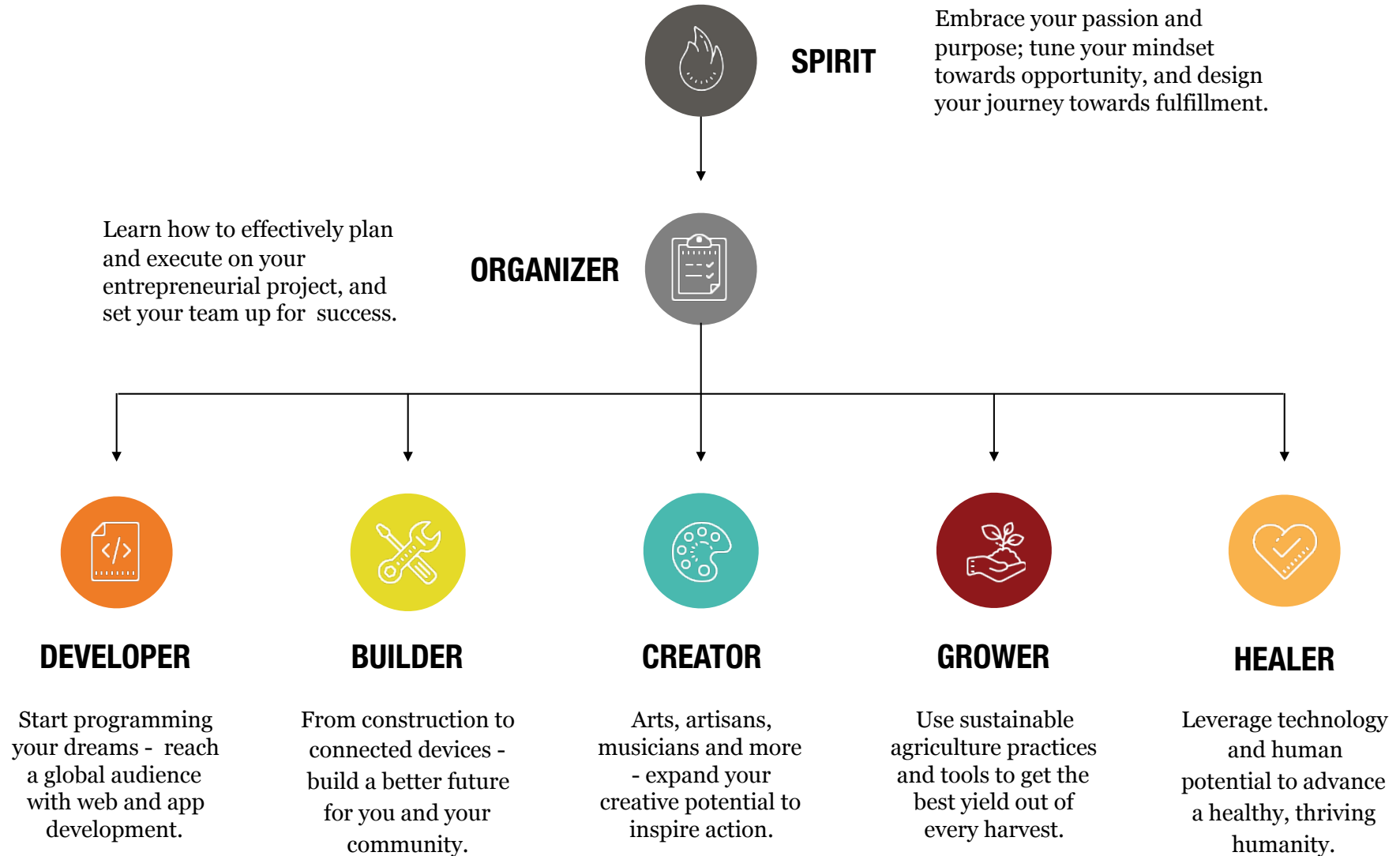
By using commonly available materials, cost of setting up the hub is significantly reduced. This would help conserve resources which can be channeled into skill development.

INDIVIDUAL

As such, while there are overarching similarities between Hubs, each Hub has its own personality, its own mode of work so that it is attuned to the community it belongs to.

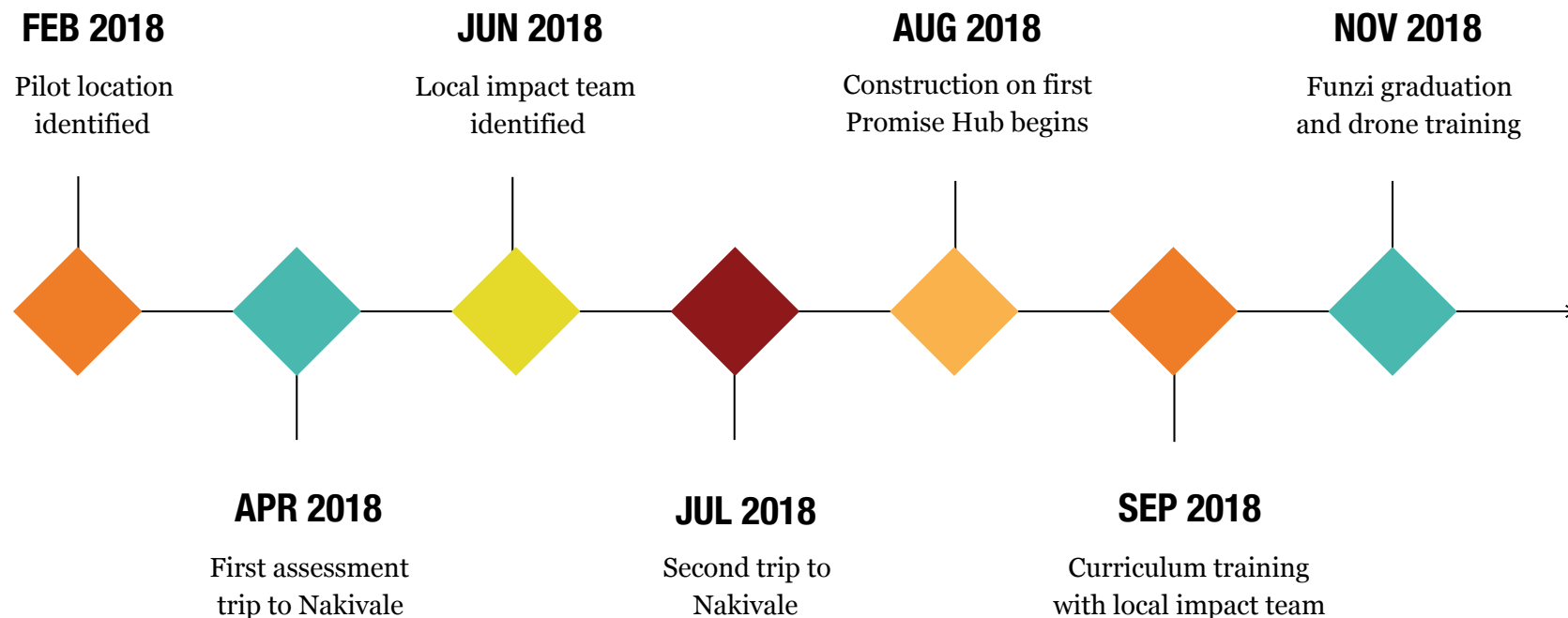


LEARNING MODULES



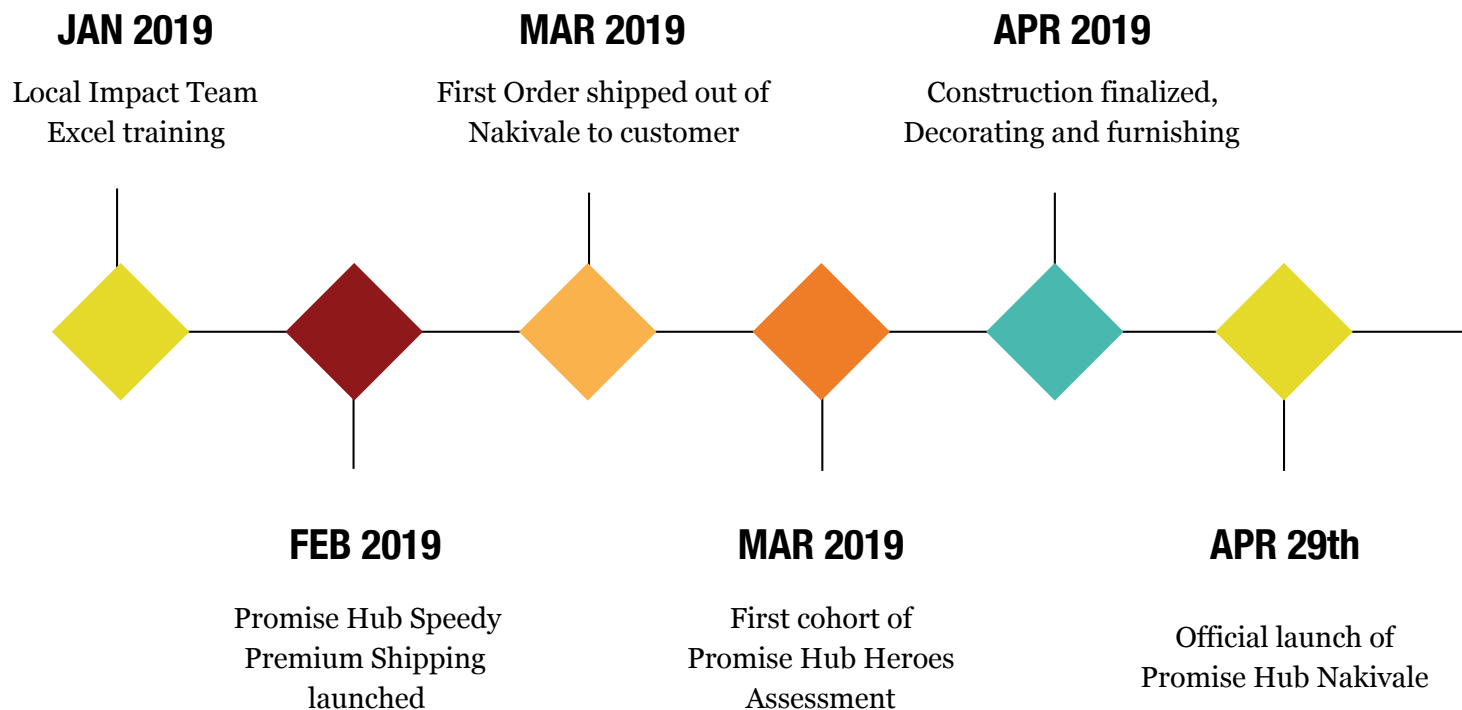


2018 was a year of marked growth and learning for Promise Hub as we kicked off extensive research, local community engagement, and construction of a pilot Hub in Nakivale Refugee Settlement in southern Uganda.





In 2019 we further built on the momentum we had established, further empowering the Local Impact Team with new tools and equipment and have set in motion all of the pieces necessary to launch the first Promise Hub in the World. The promise of a better future begins now.





Uganda, often and rightly referred to as “the pearl of Africa”, is home to over 40 million people nested along the equator - with lush forests, towering mountains, and the mesmerizing shoreline surrounding the world’s largest tropical lake, Lake Victoria.

Nakivale Refugee Settlement was established in 1958 and officially recognized as a refugee settlement in 1960 through the Uganda Gazette General Notice No. 19. The settlement is divided into 79 villages with an average of 800 to 1,000 people per village.

100 K

people inhabit Nakivale Refugee Settlement, hosting refugees largely from Burundi, Democratic Republic of Congo, Eritrea, Ethiopia, Rwanda, Somalia, Sudan, and South Sudan.





INITIAL ASSESSMENT TRIP



Our initial assessment trip exactly one year ago on April 29th marked the beginning of our implementation in Nakivale by spending several weeks of research to understand the scope of the challenge, build trust and relationships in the local community, and begin assessing required resources.

We were introduced to our local implementation partner in Nakivale, Opportunigee, run by the lead of our local impact team, Patrick Muvunga Trikpa. Through Opportunigee we were introduced to well over a dozen inspiring entrepreneurs with the passion to create businesses to empower themselves and their community.

We also identified the location for our first Promise Hub Facility at **UHURU**, a community use land project organized in partnership with Opportunigee, You and I Foundation, TO: and Habitas Rise, and identified an alternative building strategy that involves recycled plastic bottles and creates local employment.





UHURU LAND





LOCAL IMPACT TEAM

Over the spring and summer, we began to identify our local impact team, made up of passionate community leaders driven to make positive change for their community and the world. This core group has guided the design and implementation of Nakivale's Promise Hub and can provide mentorship on a variety of topics.



Patrick Muvunga Trickpa



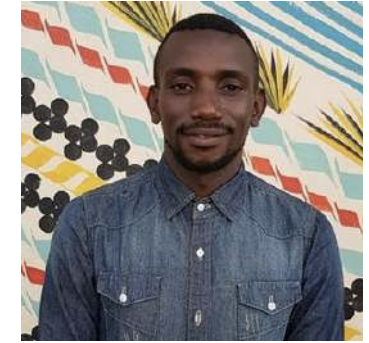
Rehema Matabaro



Alphonse Kalegera Majaliwa



Deborah Kasavubu



Joseph Kiza Kashulike



Musa Hilali



Moses Kasungu



Moses Saramembe



Joyce Kiza Marie Therese

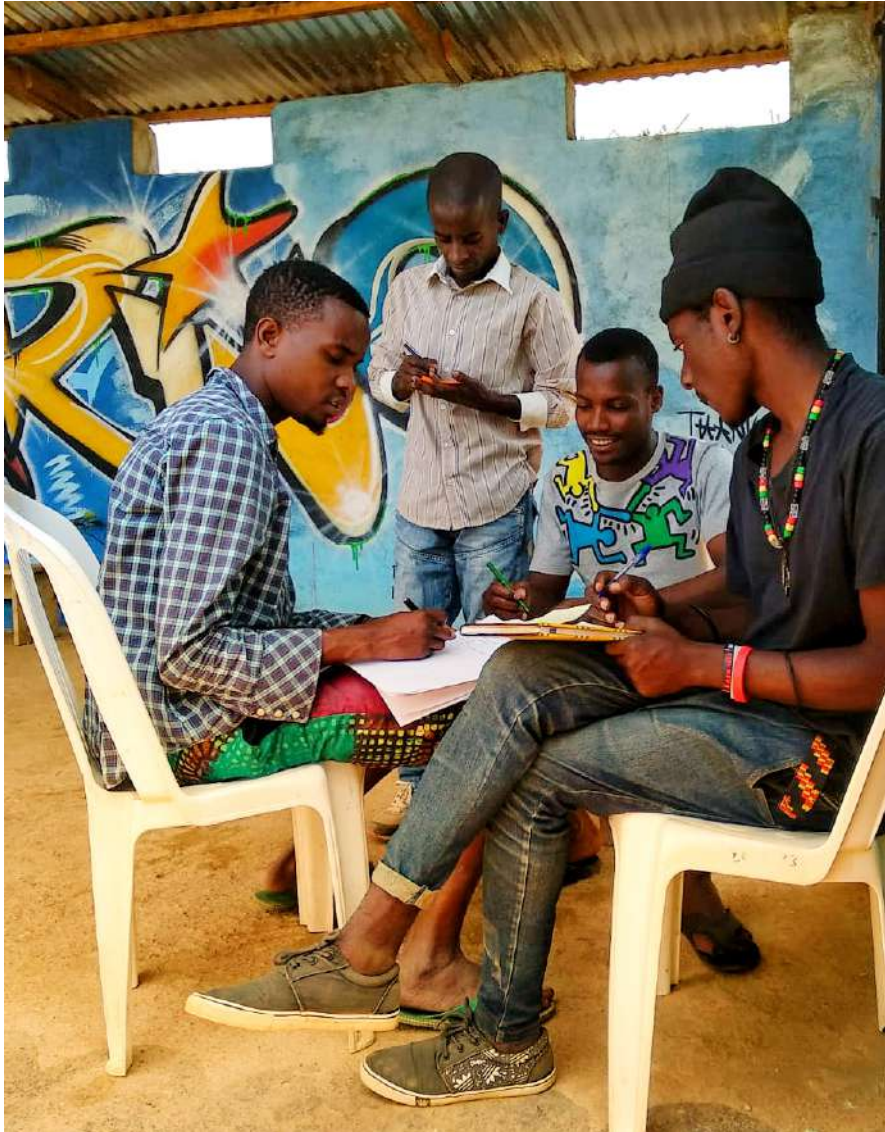




TURNING DREAMS INTO REALITY



SECOND ASSESSMENT TRIP



In our second assessment trip, we began moving both physical infrastructure forward (by beginning construction, and identifying internet provider partners) and advanced curriculum development. We also began identifying many of the businesses already in ideation and development, including the following:

- 1. UP-CYCLING** - a recycling centre that employs women in the community to separate recycling and utilize plastics as arts and crafts both locally and online.
- 2. JEWELRY** - Necklaces, bracelets, earrings, and purses made of up-cycled plastic, wood, and paper beads, often with intricate beadwork.
- 3. PUBLISHING** - Publishing house dedicated to providing a platform for refugees to share their poems and stories with the world.
- 4. MORINGA** - Several enterprises focused on proliferating the Moringa plant - known for its medicinal properties and health improving benefits - and creating soaps and other products for use.
- 5. CLOTHING** - Several clothing designers creating dresses, skirts and pants, incorporating vibrant local fabrics and fashionable tailoring.





In August, the local impact team began their entrepreneurial journey with the help of online courses from our partner platform, Funzi. Together with facilitator George Bugan, the team began to learn about effective collaboration and teamwork, as well as encouraging exploration of passion and creative opportunities.





DRONE TRAINING



Over a one week training our Local Impact Team learned how to build and fly quadcopter with Branco May of Dronemasters as an introduction to the builder module.

The team also began gathering tool requirements to achieve their project goals, and make the Promise Hub facility accessible to a diverse group of entrepreneurs and job creators.





PROMISE HUB EXPRESS POWERED BY MYMALLS



Speedy Premium Shipping with Promise Hub Express Nakivale.

Receive packages from the U.S. to Uganda, or send out packages to the world!

Our partner MyMalls delivered the technology necessary to run a post office 2.0 within the Promise Hub. Now, Promise Hub members can send and receive packages anywhere in the world through DHL - a key piece of infrastructure necessary to foster digital economy in Nakivale Refugee Settlement.

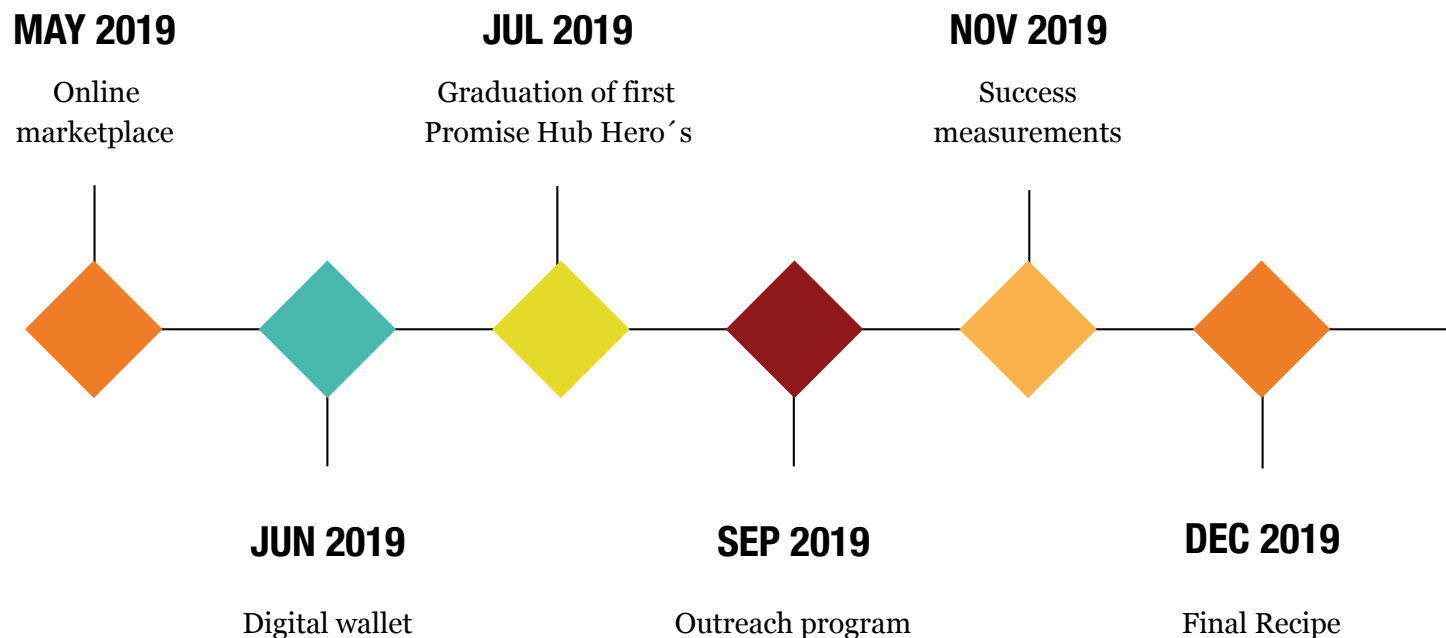


Grand opening of the first Promise Hub on planet earth, April 29th! The first cohort of 40 new Promise Hub members aka Game Changers were identified by the local impact team during the same month and have successfully started with the curriculum directly after the opening.





2019 is the year where we will test our mission game changers which are crucial to the success of Promise Hub: The Promise Hub Speedy Premium Shipping Service, our digital wallet, our online-marketplace and our curriculum. By the end of 2019 we will have learnt how to implement a full functioning Hub and how to scale from Nakivale to other regions around the world!





PARTNERS





PARTNER WITH US

We're looking for technology and education partners who can provide technology tools, education resources, and knowledge to our first Hub in Nakivale Refugee Settlement, and beyond.

BECOME A MENTOR

Each Promise Hub is supported by a wide network of local and online mentors, each with their own entrepreneurial and technological expertise.

If you have just an hour to spare every week, you can support entrepreneurs across the globe in finding their passion, purpose, and building their entrepreneurial ventures.

DONATE A HUB TO YOUR COMMUNITY

As a result of a Hub's activities, people are empowered to turn ideas into businesses and obstacles into opportunities.

After the success of our pilot, we are looking for partners to decide where the next Hub will be;

What community do you want to empower?



THANK YOU!