



2022/23 IMPACT REPORT

The Karat School Project



www.ksp.org

FROM OUR FOUNDER, EVELYNE KEOMIAN

Please accept my heartfelt appreciation for your support of the Karat School Project (KSP).

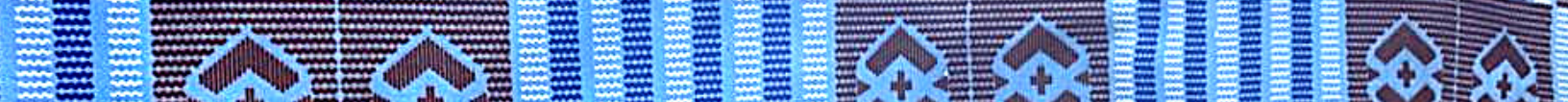
All our impact, from a 100% success rate on the CEPE exam for Côte d'Ivoire students to another student from the RV community starting college to women learning valuable farming and literacy skills reinforces our commitment to this work.

Looking ahead, I'm inspired to envision a future where a youth once residing in a broken-down RV occupies a decision-making seat at the city, county, or state level. I picture an educational center in Côte d'Ivoire that serves as a hub of learning and technology, empowering over 500 students annually and serving as the center of a thriving community.

Join me in daring to imagine a generation taught to listen, respect one another, care for the globe, and play their part as equal contributors to society. Your continued support is not just an investment in the present but a commitment to shaping a future where the next generation can do better. Those who invest in quality education today are the midwives of tomorrow's world.

Thank you for being an integral part of the transformative journey of the Karat School Project.





LOCAL PROGRAMS

What began as a COVID relief effort is now a comprehensive program for children and families who live in Residential Vehicles (RVs) and other unhoused situations. We provide support for the children to succeed in school, promote physical and mental health by bringing them outside into nature, and encourage leadership skills and self-confidence.



EDU-KITS

It's hard to succeed in school if you go to sleep hungry and cold, have no place to do homework, can't reliably access technology, and are painfully aware of the gap between you and your classmates. To support children in the RV community, we provide food and gas cards, household supplies, and materials that are essential for education. We build long-term relationships with the families and connect them to relevant programs in the community.

When obstacles arise, we step in to make a difference, whether it's resolving power and network connectivity issues, providing a computer for college, or helping a student obtain supplies for after-school activities.



IMPACTS:

78 EARLY LITERACY SUPPORT PACKAGES

\$30,000+ FOOD & GAS CARDS DISTRIBUTED

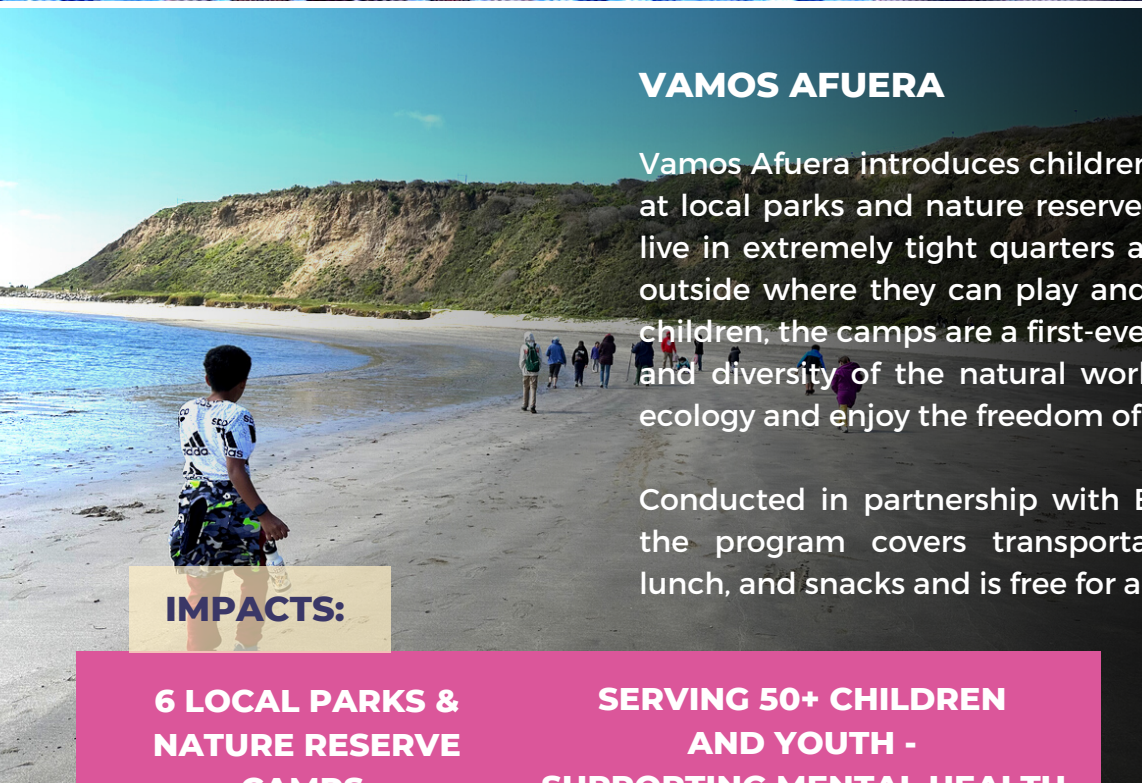
25 BACKPACKS FOR SCHOOL

35 PERSONAL LIBRARY BOXES

COMMUNITY LISTENING CIRCLE

In September, the KSP facilitated a heartfelt conversation with youth from the RV community, KSP staff, service partners, city officials, and volunteers. With diverse voices and a commitment to deep listening, we placed the experiences and perspectives of those we serve at the forefront of the conversation. We hope to make circles of this kind a KSP tradition.





VAMOS AFUERA

Vamos Afuera introduces children to the wonders of nature at local parks and nature reserves. Most of the RV children live in extremely tight quarters and don't have safe places outside where they can play and explore. For some of the children, the camps are a first-ever experience of the beauty and diversity of the natural world. They learn about local ecology and enjoy the freedom of being outside in nature.

Conducted in partnership with Environmental Volunteers, the program covers transportation, hands-on learning, lunch, and snacks and is free for all participants.

IMPACTS:

6 LOCAL PARKS & NATURE RESERVE CAMPS

SERVING 50+ CHILDREN AND YOUTH - SUPPORTING MENTAL HEALTH

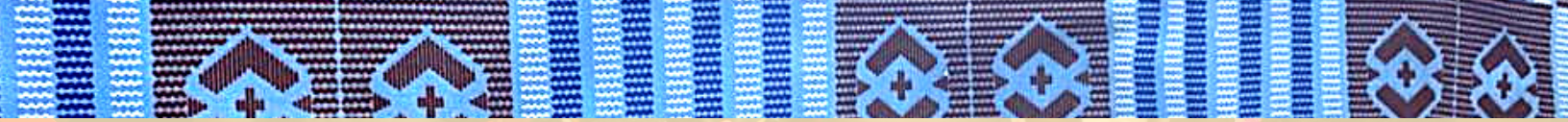
YOUTH EMPOWERMENT STORY SUMMIT

YESS introduces RV youth to inspiring community leaders who have overcome challenges by building on their life histories and identities. This day-long workshop encourages the youth to embrace who they are and raise their voices in self-advocacy.

Many of the RV youth grapple with shame and low self-esteem from their living conditions and finances. At YESS, they get to tell their own stories through creative expression and have in-depth conversations with peers, community leaders, and representatives from KSP partner organizations. This coming year, we hope to reinforce the value of the summit by providing avenues for follow-up throughout the year.



Word continues to spread about the KSP's work, thanks in part to the new documentary film, Fear Not, which chronicles Evelyne's journey and the making of the Karat School Project. The film was featured recently at North Hollywood CineFest (where Evelyne won the Humanitarian award!) and at the United Nations Association Film Festival in Palo Alto. Additional screenings are planned at schools and elsewhere. For the latest show times and locations, visit <https://theksp.org/fear-not-documentary>.



GLOBAL PROGRAMS

Against the backdrop of a ‘crippling learning crisis’ in sub-Saharan Africa, the KSP continues to have a profound impact on the lives of women and children living in poverty near Abidjan, Côte d’Ivoire.

Our full-time education center has grown to 106 students from 17 students just five years ago, and we recently passed a significant milestone - girls now make up 55% of enrolled students! Our Girls’ Education Incentive Farming program keeps girls in school while helping their mothers envision a path out of poverty. We continue to offer free health screenings to women at our annual health fair and empower middle and high school girls with reproductive education and menstrual hygiene kits.

KARAT SCHOOL EDUCATION CENTER

The Karat School campus is a thriving space of joy and learning that promotes academic excellence, practical skills, and overall well-being. Our holistic, hands-on, inquiry-based learning approach integrates modern technology and local culture. The curriculum is child-centered, loving, and attuned to the local environment. Enrollment is free, and each student enjoys two warm meals daily.

The center is also a community hub where we welcome students and their families and host events and gatherings.



IMPACTS:

106 CURRENT STUDENTS, 55% GIRLS

100% SUCCESS RATE ON THE CEPE EXAM FOR MIDDLE SCHOOL

48,000 MEALS DISTRIBUTED

58 GIRLS OUT OF LABOR & TRAFFICKING



GIRLS’ EDUCATION INCENTIVE FARMING PROGRAM

Many Ivorian girls are kept out of school because girls’ education isn’t valued and girls’ labor provides needed family income. Meanwhile, mothers lack the education and skills to improve their financial situation.

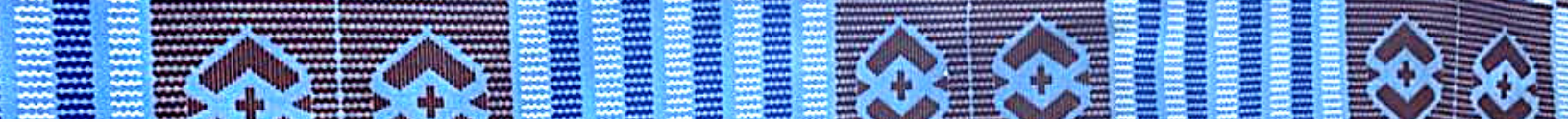
The Girls’ Education Incentive Farming Program directly addresses these concerns. Girls attend the Karat School full-time while their mothers receive a stipend to participate in a 6-month hands-on training program that covers literacy, financial basics, and climate-resilient farming practices. The program boosts girls’ enrollment, produces food for the school and community, and helps mothers improve their economic status.

IMPACTS:

GIRLS’ SCHOOL ENROLLMENT UP 50%

450 LB FOOD HARVESTED - OKRA, EGGPLANT, BEANS, AND PEANUTS

CLIMATE RESILIENT FARMING PRACTICES



WOMEN'S HEALTH

For International Women's Month in March, the Karat School campus is converted into a day-long free clinic and learning center with health classes and information. Women are screened for breast and cervical cancer and participate in facilitated discussions on reproductive health and other community health issues.



IMPACTS:

**600 WOMEN
SCREENED FOR
BREAST AND
CERVICAL CANCER**

**2000 PACKAGES OF
EDUCATIONAL
CONTENT DISTRIBUTED
EACH YEAR**



PERIOD POVERTY & GIRLS' EMPOWERMENT

Each year, thousands of girls who fought hard to have access to education miss school because they lack period supplies. In Cote d'Ivoire, 65% of women and girls reported being unable to afford these essential products. In partnership with a sustainable hygiene products company, we supply middle school girls living near our school campus with sustainable period products that empower them to stay in school during their monthly cycles.



THE VISION - A NEW CAMPUS

The Karat School campus is a transformative center for education and community engagement. But we're limited at the current location by space, rent increases, and vulnerability to eviction at any time.

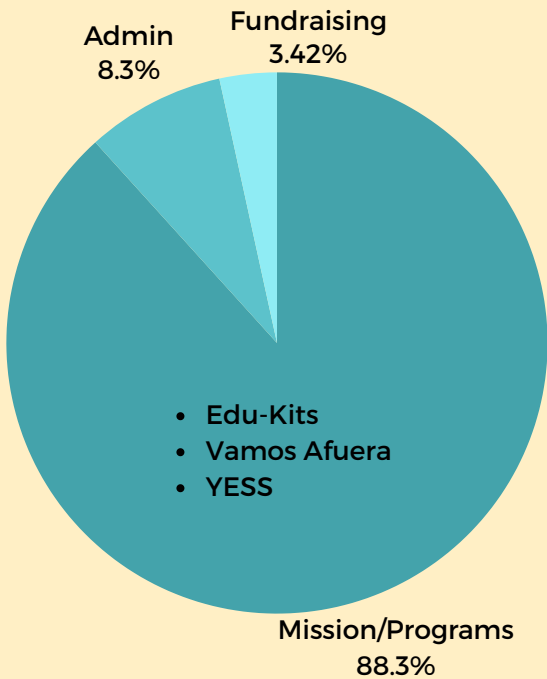
It's clear - we need a new campus of our own! The work has already begun. We've secured the land and have architectural plans for a new campus that will accommodate up to 500 students. We invite you to be part of creating this new Legacy Campus, which will ensure a stable and empowering educational environment for the next generation of Karat School children.



TOTAL DONATIONS (2022/23): \$366,383.80

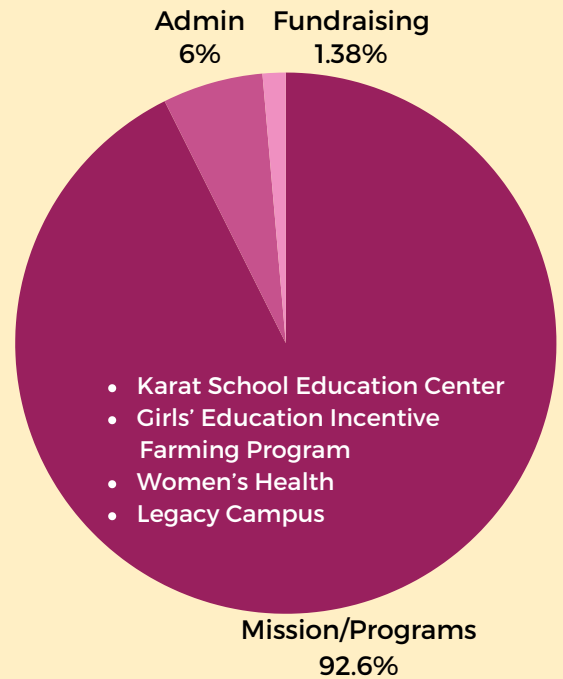
LOCAL DONATIONS: \$187,516.15

LOCAL SPENDING



GLOBAL DONATIONS: \$178,867.65

GLOBAL SPENDING



THE KARAT SCHOOL PROJECT
801 ALMA STREET, UNIT 313,
PALO ALTO, CA 94301
UNITED STATES

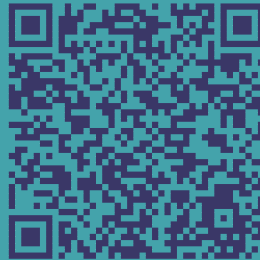
**SUPPORT OUR
INITIATIVES &
MAKE AN IMPACT**



DONATE TO THE KSP



**SUPPORT RV
FAMILIES**



**EDUCATE WOMEN &
CHILDREN IN CÔTE
D'IVOIRE**



**SUPPORT THE
CONSTRUCTION OF
OUR NEW LEGACY
CAMPUS**



DONATE STOCK

