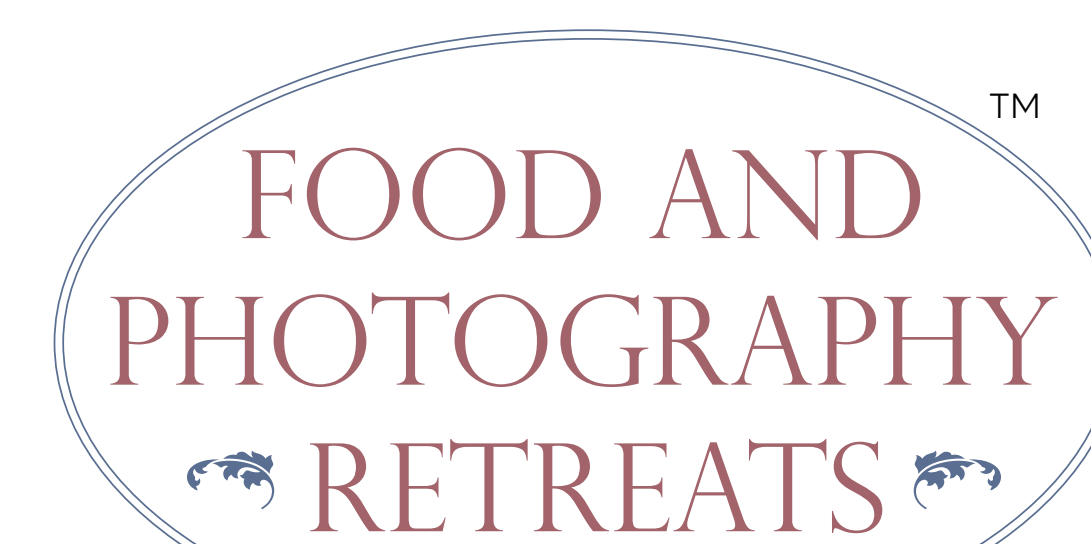




CONCEPTS FOR OUTDOOR PHOTOGRAPHERS

*a photographic retreat in
rural Burgundy
April 11-18, 2019*

WILLI ROLFES • NIAL BENVIE
HOSTED BY
CHARLOTTE BENVIE



with the Benvies

CONTENTS

The Retreat

What's on offer

Skills

Colour Transects

"Chocolate bar" collages

Field studio photography

Our venue and the region

General information about the Retreat

Sample menus

All contents copyright

Food and Photography Retreats/Niall and Charlotte Benvie 2018

and Willi Rolfes

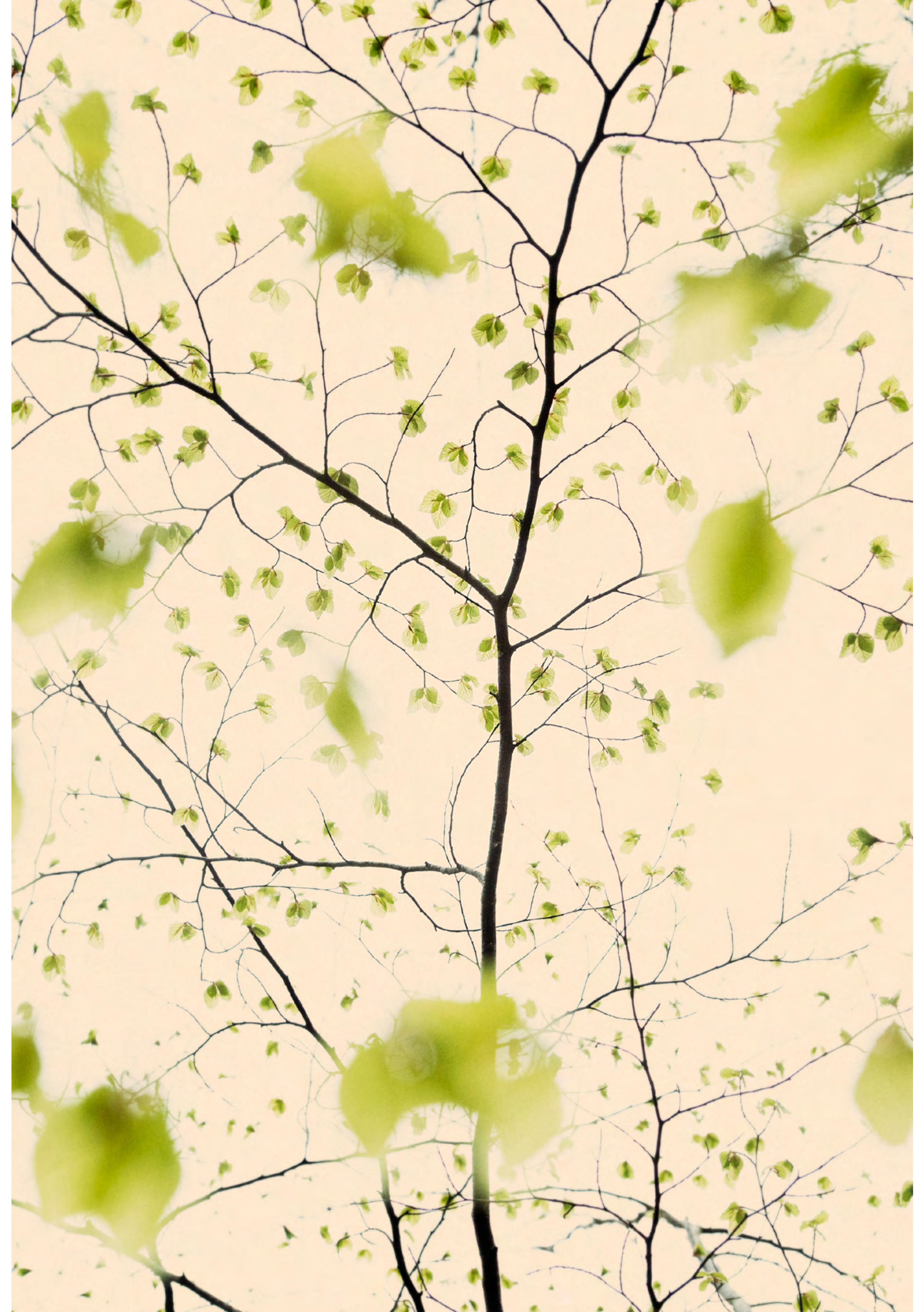
The Retreat

Food and Photography Retreats are for people who enjoy a house party-style holiday in a lovely setting where they can immerse themselves totally in photography. We help you to acquire new skills and deepen your knowledge of photography while enjoying fine hospitality at the Château de Magny en Morvan Estate.



The concept of a Photo Retreat is a little different from a tour or workshop. The Retreat has elements of both but the tuition is more structured, the outcomes are

clearer and a lot of emphasis is put on creating a convivial atmosphere in which conversation can flow and ideas emerge. Most of the tuition and some of the photography takes place within the Estate itself, with excursions to the villages, woods and fields of the Morvan Natural Regional Park (MNRP) to carry out specific projects. There is a wonderful large studio space available for our exclusive use during the Retreat as, indeed, are other facilities on the Estate.



What's on offer

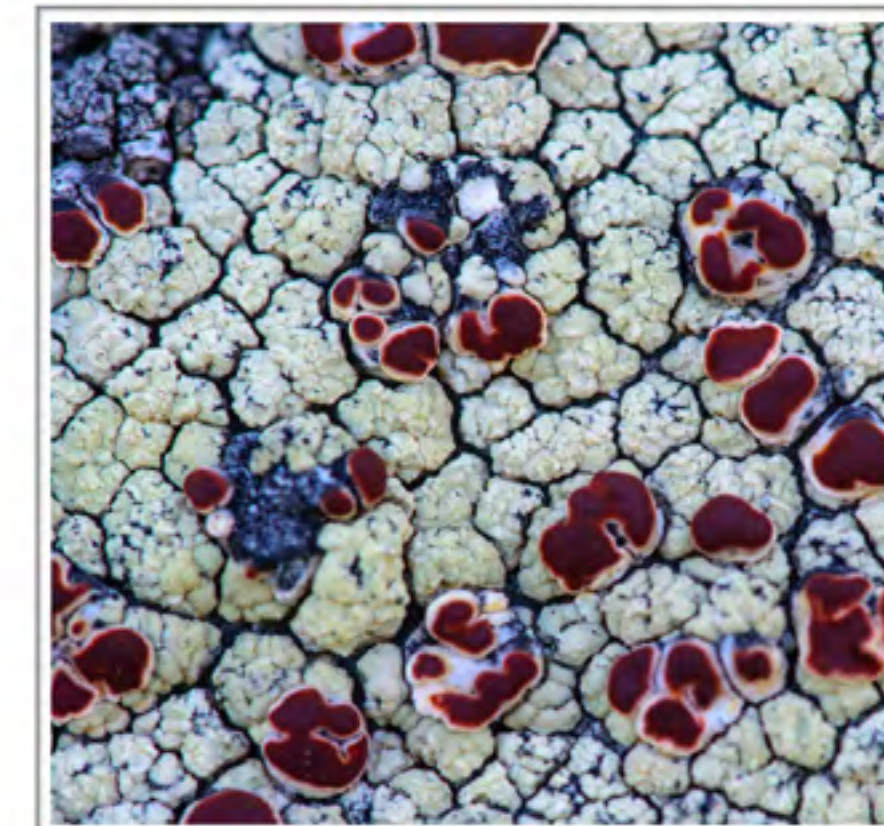
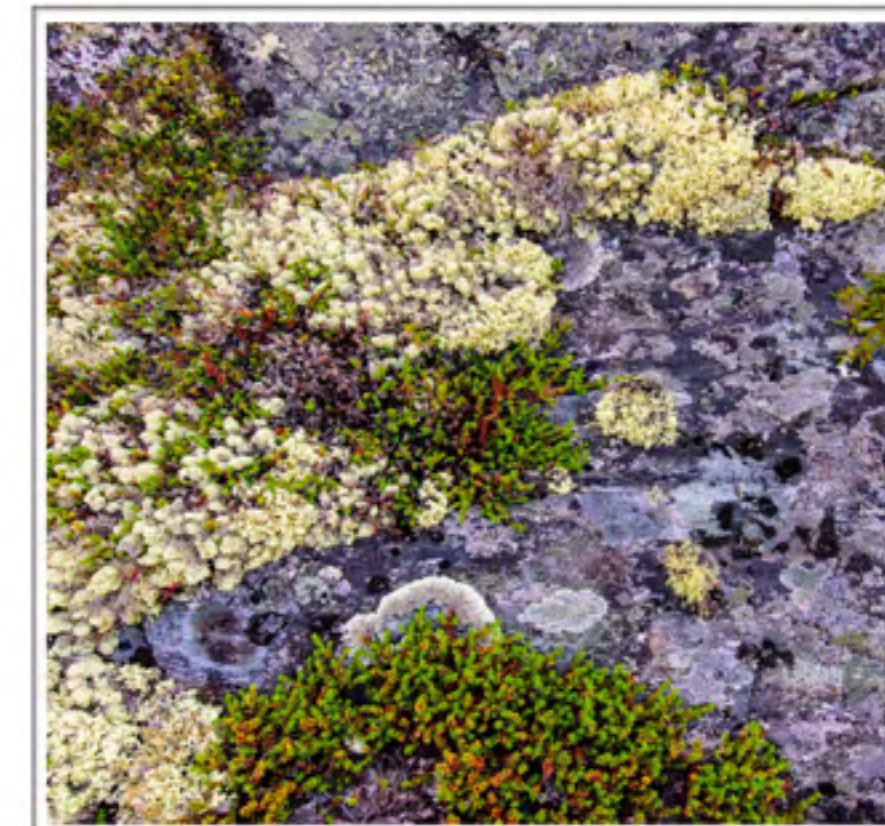
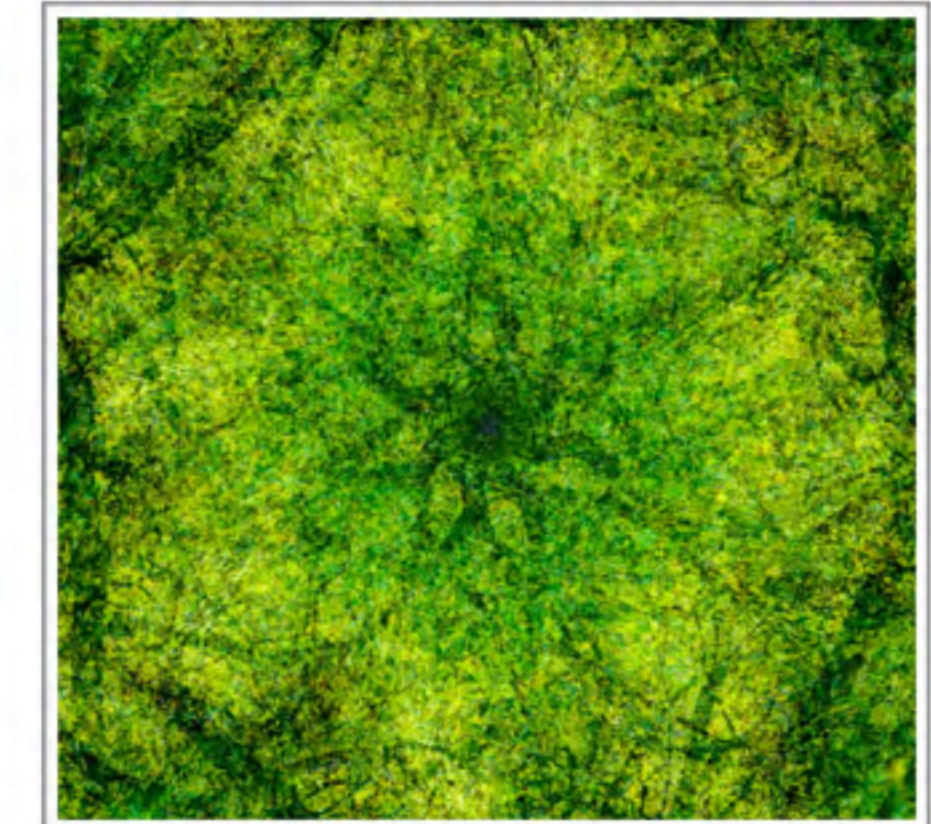
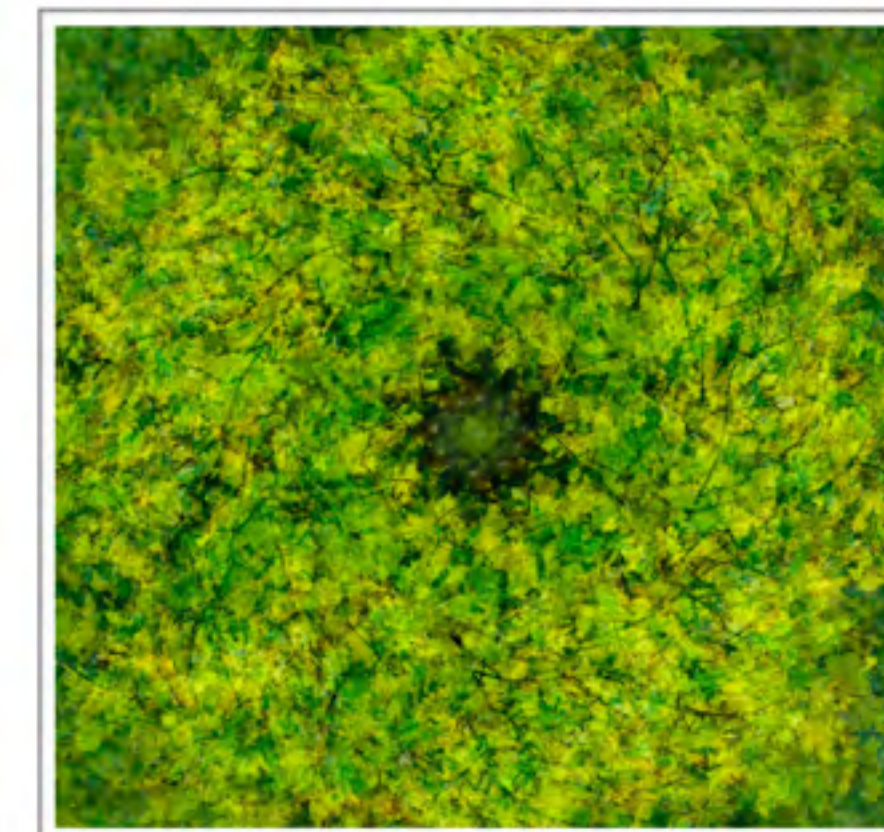
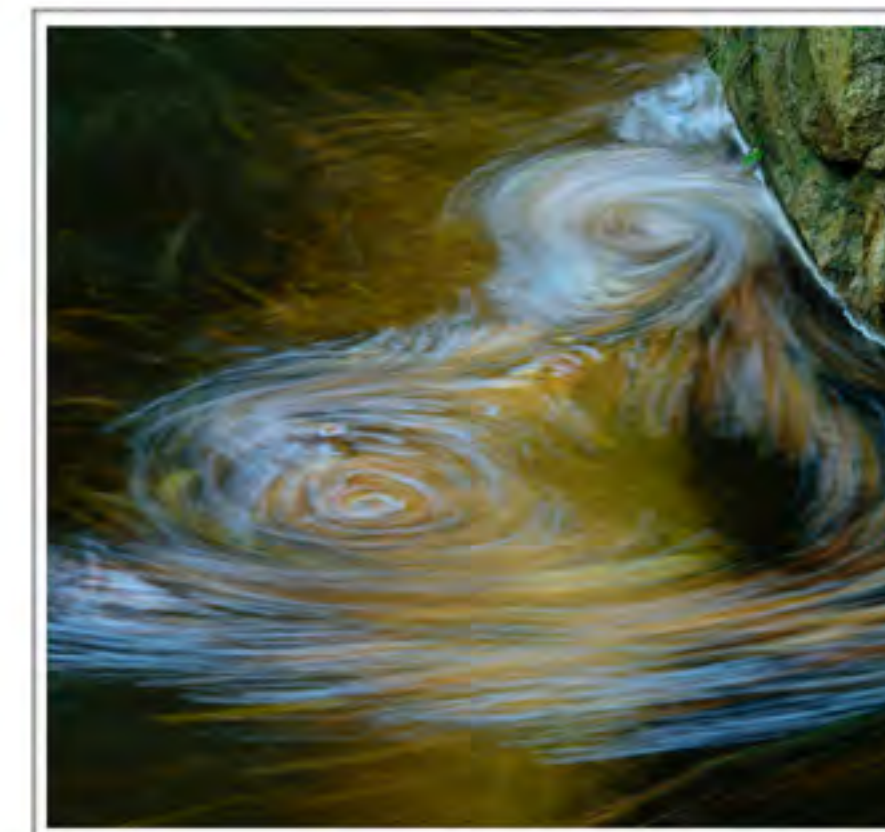
Willi and Niall all are not only experienced leaders but widely acknowledged innovators and teachers - with a willingness to share many years professional experience so that you can advance your own work.

During the Retreat, you will learn how to:

- create Colour Transects
- shoot and assemble "chocolate bar" collages
- photograph, process and composite field studio pictures

Our discussion sessions will centre around major themes in outdoor photography including style; the origin of ideas; authenticity; parallels in painting; the important players - modern and contemporary; and holding the viewer's attention. Armed with this formidable range of skills and knowledge, all supported by reference notes, you will be equipped to produce personal, distinctive photography.

Willi Rolfe
FOTOGRAFIE



SAGENHAFTER HARZ

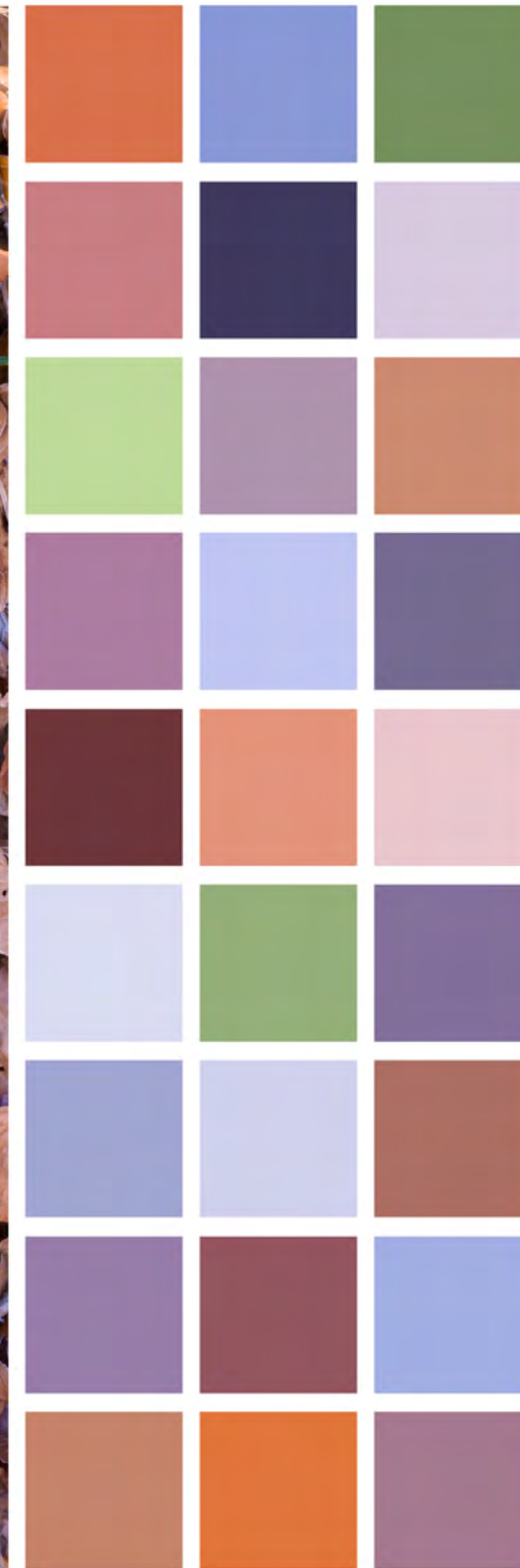
Skills

Colour Transects

Niall started to create this style of image in 2017 and they have been widely published since. The object is to present the pure colours present in the scene to the viewer by sampling systematically from lines across the picture.

We teach you all the Photoshop skills necessary to make these images and work to find variations you can call your own.

Colour is often treated as an incidental element in an photograph. Creating Colour Transects deepens our appreciation of the true colour of things.



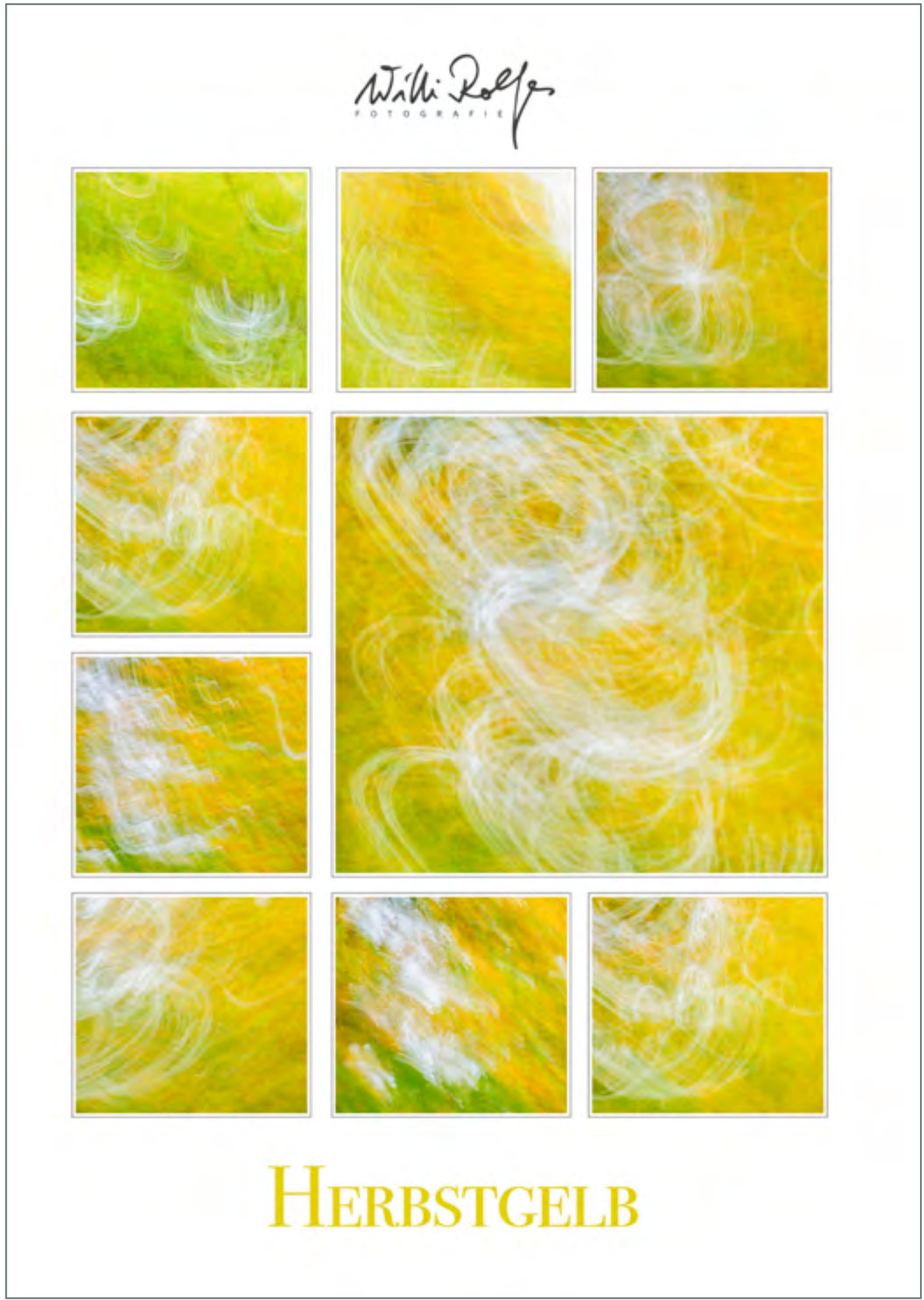
46.212° N
colour transect #32

Skills

“Chocolate bar” collages

These images are all about diversity where people expect there to be uniformity. It’s a highly versatile technique that is effective in holding the viewer’s attention and encouraging closer examination of the subject, whether natural or man-made.

With the application of your choice we show you how to assemble a collage.



Skills

Field studio photography.

What started in 2009 with two flash guns and two pieces of plastic has evolved into a worldwide photographic initiative: Meet Your Neighbours, now with several hundred participants. Niall has been instrumental in describing and sharing the technique.

You will learn how to make these striking, backlit images, on location with wild subjects; the specific way to process these photos; and how to assemble arresting composites. It is a really great way to illustrate biodiversity.



Our venue and the region

The owners of Château de Magny en Morvan have made a large investment in converting a spacious historic barn adjacent to the Château into very comfortable modern accommodation with eight en-suite rooms and a large upstairs studio space. It also houses a professional kitchen as well as dining room and other meeting spaces. Within the grounds there is another studio space attached to the walled garden and we have access to various areas within the Château itself for photography.

The Château is in the Nièvre, a Department whose historical backwardness has allowed the preservation of extensive forests, small hedged fields and plentiful wildlife. It's often described as "the countryside as it used to be." In the Morvan, the hills rise a little higher, the forest is denser and the population even sparser. The large range of butterflies, amphibians and birds is a testament to the low levels of agro-chemicals in the environment here. The landscape, while lacking the drama of the Alps or the Pyrenees, is lush and attractive and prompts a more introspective approach appropriate to this Retreat.

Unusually for France, much of the MRNP is founded on granite rock rather than lime, producing a flora more typical of Scotland, especially in those parts of the park where

Douglas fir has been planted. The centre of the mediaeval town of Beaune, with its UNESCO World Heritage Site status, is about one and a quarter hour's drive away and marks the furthest point that any of our excursions take us. This is wine country and home to several Grands Crus. There are other mediaeval towns a little closer, include Bourbon Lancy (40 minutes) and Autun (30 minutes). These, and local villages, are rich hunting grounds for details photography.

The climate is very agreeable, with summer temperatures typically in the upper 20's (sometimes higher), vibrant springs and cool autumn mornings with mist in the beech and sweet chestnut forests. We use organic fruit and vegetables from local suppliers and the Estate



has an arrangement with its neighbours for the supply of free-range eggs, game and meat (this is Charolais country) for our house parties.

[A word about the food Charlotte prepares.](#)

Each main meal, Charlotte serves a "plat du jour" but she also caters imaginatively for those with allergies or intolerances. She makes extensive use of local produce to prepare dishes that are both creative and satisfying. Charlotte's chocolate work often finds its way into picnic lunches and at the end of an evening. Whenever possible, we will take our evening meals outside in a covered dining area to enjoy the natural soundscape. The house party style offers a degree of flexibility unmatched by hotels when it comes to planning our days and when to eat.





CHATEAU DE MAGNY EN MORVAN



CHATEAU DE MAGNY EN MORVAN

General information about the Retreat

Dates

Arrive the afternoon of 11th April and depart the morning of 18th April, 2019.

Price

£2400 / €2500

What's included

- 7 nights' accommodation in the barn conversion at the Château de Magny en Morvan.
- All meals.
- Transport to and from Le Creusot/Montchanin TGV station where the Retreat begins and ends.
- Transportation during the Retreat.
- Materials for field studio photography and use of flash equipment and modifiers

What's not included

- Travel to and from Le Creusot-Montchanin from your home.
- Alcoholic drinks.
- Travel insurance.
- Admissions to any attractions we may visit.
- (See the Terms and Conditions for more information)

Travel

Our pick up point for guests who are not driving is the TGV station at Le Creusot/Montchanin, 45 minutes from the Château. There we collect guests in a minibus.

Spending money

You can use your credit card to withdraw €'s in

the local towns should you need to buy extra props, pay for admissions - or even to buy wine.

Insurance

It is a requirement of booking that guests provide evidence of personal travel insurance to cover cancellation and curtailment, medical and emergency expenses (including repatriation), personal accident, injury and death in addition to loss of/damage to luggage and possessions, personal possessions and flight cancellations/delays. Bookings are accepted on completion of our Insurance Indemnity form.

Passport and visa requirements

A passport valid for at least six months beyond length of stay is required. No visa necessary for EEA/Swiss citizens.

Language

The French owners of the Château speak flawless English, although it is not so widely spoken in this rural area. Niall and Charlotte can assist you with French language to some extent.

Climate

The climate here is continental so days can be warm - into the mid-20's - and nights cool. Regardless of the weather we will be busy, in or outdoors - even if it is wet.

Clothing

Generally we would hope that the weather will be warm and sunny, but in early morning and in

the woods it can be cooler so bring an extra layer in addition to your normal casual clothes.

- Lightweight trousers.
- Long sleeved shirt/tee-shirt.
- Light wool jumper.
- Lightweight waterproof jacket and trousers.
- Walking boots in addition to street shoes.
- Sun hat.
- Light warm hat.
- Pair of light gloves.
- Light scarf to protect your neck from the sun.
- Slippers for the studio - it has a wooden floor and we can't wear shoes.
- You might like to pack something a little smarter to wear in the evenings but no tiaras, please!

Photographic equipment

Bring as much of your photographic equipment as practical. You could end up using any of it, although realistically, a macro lens and mid-range zoom will receive most use.

In addition, you will need:

- A laptop with Adobe Lightroom/ACR, CaptureOne or Alienskin Exposure software.
- A tripod: there's no avoiding it this time.
- An electronic release.
- A remote trigger, if you bring your own flash.
- Reflectors and diffusers, but only if you already have them.
- A means of backing up your images, such as a large capacity memory stick.

Partners

Non-photographer partners are welcome. This is primarily a photographic Retreat but it is also a relaxing - if stimulating -holiday in a rather lovely area (the famous wine area around Beaune is about one hour and forty-five minutes away by car). There are plenty of good spots to enjoy around the Estate. The cost is the same for photographers as non-photographers.

Daily routine

Each evening at dinner we outline the goals for the next day and where we plan to take you. But sometimes, if the weather is changeable, we may alter those plans so that we always make the most of whatever conditions we find. We use the best parts of the day to photograph the "raw materials", sometimes eating a picnic lunch in the field. You can participate in as much or as little of the teaching and tutorials as you like - and that goes for a travel partner too. We realise first and foremost that you're on holiday.

Your safety during the Retreat

We treat your safety seriously on our Retreats. While most of the locations we visit present few difficulties to those with even average fitness, where particular hazards are present, we will draw these to your attention beforehand and you can judge if you want to proceed.

About us

After many years leading tours and workshops for other companies at home and abroad Niall and Charlotte Benvie established Food and Photography Retreats in 2018. Our offer combines the teaching of particular skills in attractive locations with great hospitality, conversation and food. In a number of Retreats, they cooperate with other, renowned, photographers to offer their guests a more rounded experience.

Niall has been a professional photographer, writer designer and guide for over 25 years with a massive publication record including six books and hundreds of articles. He has been involved in founding and running several of the biggest outdoor photographic initiatives of the last decade, including Meet Your Neighbours, Wild Wonders of Europe and 2020VISION.

For 28 years, **Charlotte** combined a career in the Civil Service with freelance catering and hosting roles before coming to work with husband, Niall. Guests value not only her expertise in the kitchen and dining room but her attention to detail and her warmth. She has a keen eye for a picture too and can also assist with Lightroom processing. She is a trained chocolatier.

Willi is a professional educator and MD of the Catholic University, Stapelfeld. He is a an

acknowledged leader in the field of nature photography workshops and has developed a successful method for teaching photography. He has published 14 books to date, his work is widely published in the photographic press and beyond and he is founder of Inspiration Natur.

Contact Niall and Charlotte:

Telephone: +44 1356 626 768

Mobile: +44 7898 788 255 / +44 7400 303 930

e-mail: office@foodandphotographyretreats.com

www.niallbenvie.com : www.willirolfes.de



Sample menus

from the kitchen of
Charlotte

Dinner

Tuesday 30th January, 2018

Icelandic lamb goulash
served with couscous

Carlotta's Chocolate mousse
served with home made snowflake

Coffee and Carlotta's Chocolates
Kilchoman Whiskey bonbon

from the kitchen of
Charlotte

Dinner

Saturday 14th February, 2015

Roasted figs with goat's cheese
and Parma ham
served on a bed of leaf salad

Salmon salsa verde en croûte
served with baby potatoes and green bean

Carlotta's Chocolate pots
served with fresh berries

from the kitchen of
Charlotte

Dinner

Sunday 17th May, 2017

Venison pie with sweet chestnuts
and banana shallots
served with clapsnot, braised cavolo nero
and oven roasted potatoes

Apricot brioche pudding
with crème fraîche

Coffee and Carlotta's Chocolates
dark chocolate bonbon

from the kitchen of
Charlotte

Dinner

Wednesday 27th January, 2018

Chicken and chorizo casserole
served with oven roasted potatoes
and green vegetables

Assiette of miniature desserts
with a lemon theme

Coffee and Carlotta's Chocolates
truffles