

SHOPPE OBJECT



TWICE *as* NICE

It's no secret that we've been stuffed to the gills, sold out at max capacity for a few years running. Assembling a colossal tent (that we refused to call a tent) was a logistical stopgap providing room for growth, bringing more great brands into the fold. But it was never going to be forever. Within a year, we outgrew that too.

We're thrilled to present Shoppe Object's expanded market footprint with the inauguration of our beautiful new second home: Skylight at Essex Crossing. This additional downtown venue is exciting; a dramatic new space in the heart of Manhattan's Lower East Side, and a perfect complement (and quick hop step) to our waterside home at Pier 36. It's time to stretch out, and this season we bring you more than 700 hand-selected brands across an integrated three floors of discovery.

Ideal? Maybe not (we hear you, naysayers!). But if you've ever walked 12 halls of Messe Frankfurt, or traveled an hour outside Paris to the parc des expositions ... if you've wandered the entire city of Milan during Design Week or traversed even half of the 50+ floors at AmericasMart in Atlanta (and we suspect many of you have) ... a 10 minute shuttle really doesn't seem so bad. And after all – this is New York-effing-City! In exchange for a little more of your time we are offering more of everything this season; more space, more brands and more beauty – more new and more tried-and-true – more community and connection. More fun! It's twice as nice, and it wouldn't be the same without you.

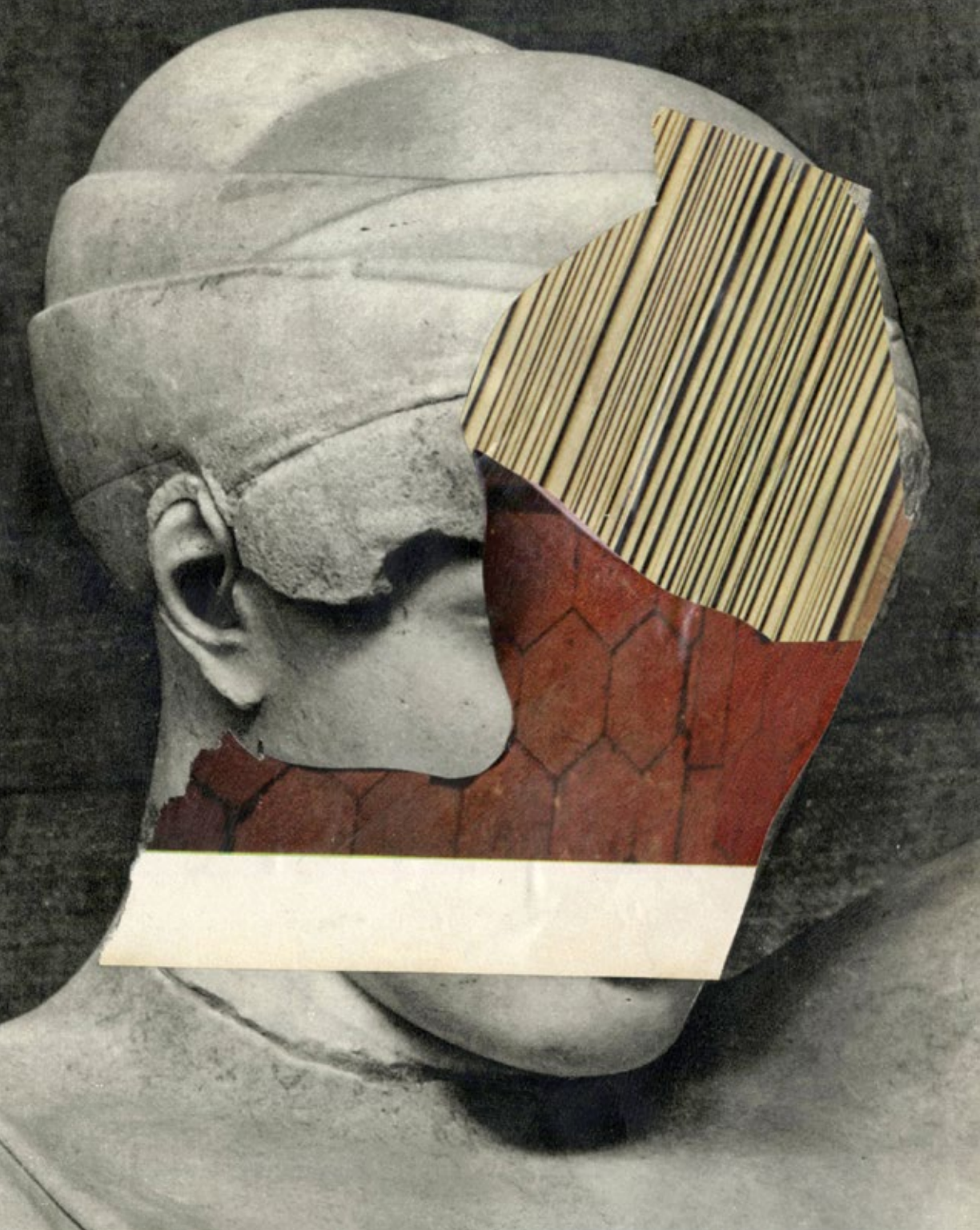
Thank you for taking this ride with us. Thank you for showing up – for your trust and your feedback, faith and friendship, and for giving us a reason to do what we love to do.

SHOPPE OBJECT WINTER 2024



Thank you, ^{you will} ~~for~~, for your deep understanding and
friendship. Carmelita





Artist of the Season

JAMES GALLAGHER

Brooklyn-based artist James Gallagher uses collage to investigate human form and personal identity, creating works that have been featured in museums and publications around the world. His Live Collage figures can be seen on the new HBO docuseries “Sex Diaries”.



LIVE COLLAGE PORTRAITS @ PIER 36 | WATERSIDE CAFE

This February, James will be practicing the art of Live Collage on the Shoppe Object show floor in Pier 36 next to the Waterside Cafe ... you will be his model. Sit with James for a live collage portrait for 15 minutes in this “studio” – available every day from 10am-12pm and 2pm-4pm – or stop by to see his work in person and start a collection of your own.





SECOND HOME

SKYLIGHT *at* ESSEX CROSSING

A stunning showcase of newness and longtime favorites featuring hundreds of curated brands on multiple levels.

MAIN REGISTRATION ENTRANCE:

198 BROOME STREET BETWEEN NORFOLK & SUFFOLK
(Pick up your Shoppe Object badge here)

PRE-BADGED ENTRANCE:

DELANCEY STREET BETWEEN NORFOLK & SUFFOLK
(Shoppe Object pre-printed badge required for entry)

SUBWAY: Delancey Street – Essex Street Station **F J M Z**

NEAREST PARKING:

Delancey & Essex Municipal Garage, 105-113 Essex Street



Shuttle Pickup Information & Schedule

GET ON THE BUS GUS



PIER 36 ↔ SKYLIGHT AT ESSEX CROSSING

Shuttles will be running between the two Shoppe Object venues. **They will depart each location approximately every 10 minutes for speedy transport.** The ride is quick (5-7 minutes); so grab a seat ... and rest your feet. Please note pickup and dropoff locations below:

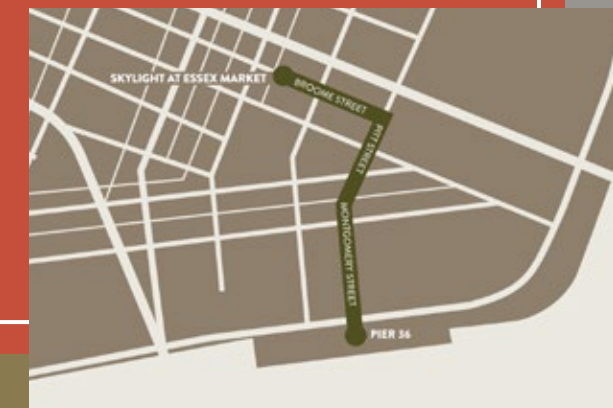
PIER 36

In the roundabout at the venue front entrance
299 South Street

SKYLIGHT *at* ESSEX CROSSING

A touch West of the venue front entrance
198 Broome Street

If you have any questions regarding the shuttles, please visit the main Registration desks for more information.



THE JAVITS CENTER ↔ SKYLIGHT AT ESSEX CROSSING

A shuttle service will travel each day of the show between the Javits Center and Shoppe Object at Skylight at Essex Crossing, departing each location approximately every 30 minutes between 9am and 6pm. Shuttles will pick up and drop off directly in front of the Skylight at Essex Crossing Entrance (200 Broome Street) and at 429 11th Avenue (in front of the Crystal Palace at the Javits Center). Ask the front desk at either location if you'd like more info.

What's On at the Show

FOOD & DRINK

SKYLIGHT *at* ESSEX CROSSING

SO many choices! Culinary options truly abound at our brand new second home. Enjoy the view with beverages and light fare in the Garden Café on our upper level, or grab a perfect brew at the Onyx Coffee Bar on our ground floor, then stroll through the pass to explore the bounty of the Essex Market and Market Line food halls, where you'll find everything from artisanal French pastries or fresh juices and smoothies, to homemade tacos, Peruvian pollo a la brasa, or delicious ramen or Thai ... not to mention great craft beers and some spot-on Roman style pizza. And that's just a taste ;-)

PIER 36 RIVERSIDE PAVILION

Start your day (or reboot!) with an award-winning cup of joe at the Onyx Coffee Bar, then find easy options from our partners at Monterone on the main level at Pier 36, with snack carts roaming the floor featuring small bites and refreshments, and heartier sandwiches (with a sparkling glass of wine?) at the Waterside Café. For a healthy, hot and delicious lunch, head upstairs to the Shoppe Café on the mezzanine level, where our old friends at LOVE YOU LIKE are serving up tasty grain bowls, daily specials, warming soups and refreshing salads.



ONYX COFFEE LAB

Shoppe Object's coffee partner Onyx Coffee Lab travels the world in search of the very best beans, seeking (and delivering) quality and accountability in their award-winning roasts. Sip an espresso and shop their goods including coffee, tea, and other treats (yes – they wholesale!) at the Onyx Coffee Bar found in both Shoppe Object venues this season. By the entrance of Pier 36, or on the Ground Level of Skylight at Essex Crossing near the Delancey Street entrance.



#NO FOMO

FREE BREAKFAST!

Can't Shoppe on an empty stomach! Enjoy complimentary breakfast at the Shoppe Café (upstairs on the mezzanine of Pier 36) or the Garden Cafe (on the Garden Level of Skylight at Essex Crossing) each morning. Please present your badge for entry.

EXHIBITORS | 8-9AM
ATTENDEES | 9-10AM

THE BOX | 189 Chrystie Street NYC

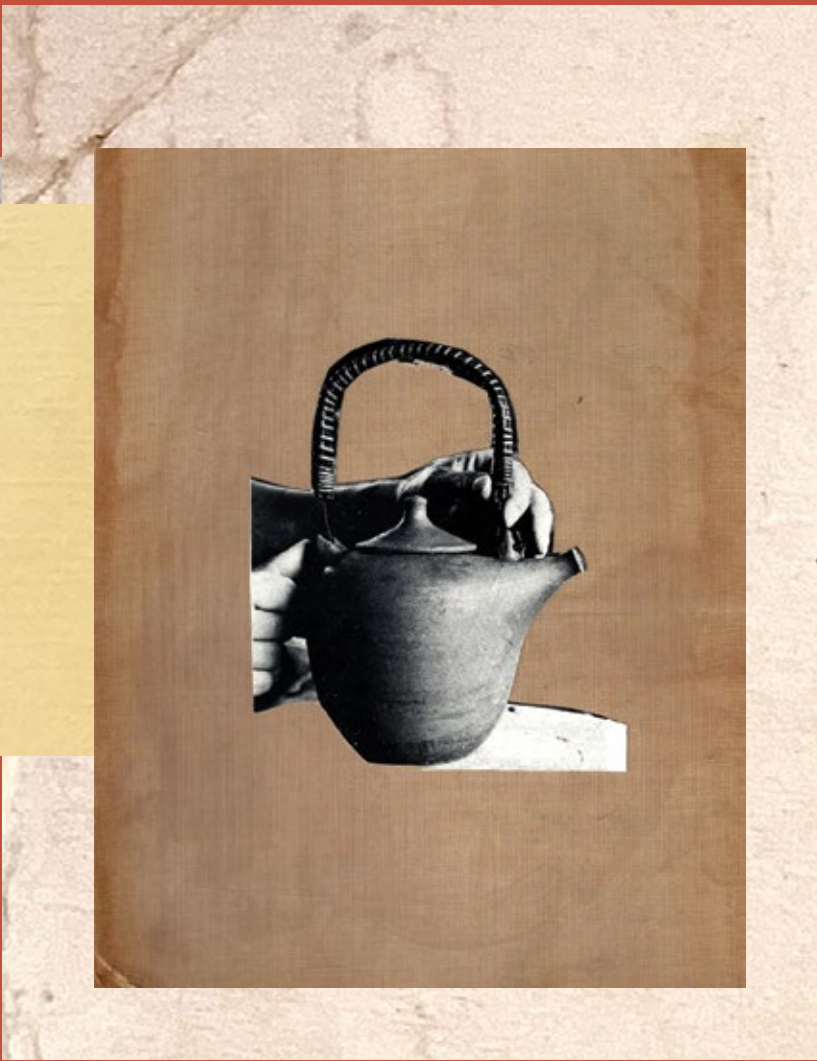
Open to all fun-loving Shoppers with a printed badge and an ID (required for entry, 21+).

SHOPPE OBJECT PARTY @ THE BOX

Save space on your dance card for our legendary winter party on Monday night, immediately after the show! All are invited to join us for cocktails (first hour open bar, food available for purchase) and dancing with SO's resident DJ Lucas Walters. Shuttles will depart from both venues at 6:00 and 6:15, and your badge and ID are all that's required for entry.

MONDAY | FEBRUARY 5 | 6:30-10:30PM





and published 1975 by Design Books Limited
(General Sales, London W1)
© 1975 Design Books Limited
ISBN 0 304 0294 2
Produced by Mandala Printing
1 Woodside Road, Charing

on Indoor
Index



*BRAND
DIRECTORY*

A - C

E ESSEX GARDEN LEVEL
E ESSEX GROUND LEVEL
P PIER 36

11.11 / ELEVEN ELEVEN **E** D100
54 CELSIUS **P** F315
8.6.4 **P** A301
A-JOURNAL **P** B215
ABACUS ROW **P** G311
ABIGAIL AHERN *Aesthetic Movement* **E** E110
ACTUALLY CURIOUS **E** H9
AESHAANE BY SHILP **E** M234
AESTHETIC MOVEMENT **E** G101
AFRICAN JACQUARD **P** D203
AIYA AYIA X ALEX SHIELD DESIGN **P** C3
AKETEKETE *Powered By People* **P** E101
ALAIN SAINT-JOANIS **E** A103
ALEXANDRA TSOUKALA **E** M236
ALEXANDRA VON FURSTENBERG **P** G407
ALIMROSE *Karen Alweil Studio* **P** E406
ALKEMIE **P** G219
ALL THE WAYS TO SAY **P** G212
ALL VERY GOODS *BLMAI* **P** H212
ALPHABET LEGENDS *Karen Alweil Studio* **P** E406
ALPHABET STUDIOS *Crow & Canary* **P** A100
ALTER IMAGES ART *American Design Club* **P** A114
ALTR SOAPS **P** NOURISH
AMBER SAKAI *Karen Alweil Studio* **P** E406
AMEICO **P** G401

AMERICAN DESIGN CLUB **P** A114
AMERICAN TRENCH **P** G316
ANCHAL **P** G308
AND HERE WE ARE **E** L119
ANDJACOB *Powered By People* **P** E101
ANDREWS MCMEEL PUBLISHING **E** L111
ANDY KOUHAL **P** H305
ANECDOTE CANDLES **P** H214
ANGULAR MOMENT **E** D2
ANJALI'S CUP **P** NOURISH
ANNA BECK *Global Artisan Project* **E** M104
ANOTHER STUDIO **E** M100
ANTO YUKON **P** NOURISH
ANZU JEWELRY **E** H2
APOTHIA LOS ANGELES *Karen Alweil Studio* **P** E406
APPARIS HOME *Karen Alweil Studio* **P** E406
APPLE GREEN DUCK **P** B306
APPLY STICKERS **E** L107
APPROVED BY FRITZ **P** G207
APUNTES **E** M107
ARCHIVIST **P** E311
AREAWARE **P** C401
ARILLOOM **P** C304
ART (BY) ALEISHA **P** C102



ARTBOOK D.A.P. *Aesthetic Movement* **E** G129
ARTEL **E** A101
ASSOULINE **E** E102
ATELIER SAUCIER **E** B121
ATUM FRAGRANCE **P** E2
AUTUMN SONATA *Aesthetic Movement* **E** G114
AVENIDA HOME **E** A113
BABA SUISHABA *SAIKAI* **P** E200
BADGER & BURKE *Crow & Canary* **P** A100
BAG-ALL **P** B307
BALMUDA *SAIKAI* **P** E200
BALTIC CLUB **P** G205
BANANA MENORAH **E** L1
BEAUFORT LONDON *Mon Oeil Brands* **E** C114
BEEHIVE HANDMADE **P** C208
BEGINNER CERAMICS **P** G318
BEHL DESIGNS **P** C110
BELLA CUCINA **E** D101
BELLROY *Nutty Rice Showroom* **P** E213
BERGS POTTER *Aesthetic Movement* **E** G104
BISOU BAR **P** A106
BITTERS CO. **P** G305
BLABLA *Karen Alweil Studio* **P** E406

BLACK DAHLIA *Karen Alweil Studio* **P** E406
BLACKBIRD *Mon Oeil Brands* **E** C114
BLACKWING **P** E317
BLNCD NATURALS *Karen Alweil Studio* **P** E406
BLOCK DESIGN **P** G203
BLONDERY *BLMAI* **P** H208
BOHEME FRAGRANCES **P** E1
BOMSHBEE **P** B219
BON TON TOYS **P** A310
BOSKKE *American Design Club* **P** A114
BOSS DOTTY *American Design Club* **P** A114
BOTTLE BRANCH **P** B103
BRITISH COLOUR STANDARD **E** B117
BROOKLYN CANDLE STUDIO **E** A117
BROOKLYN PLANT STUDIO **E** C107
BROOM CRAFT *SAIKAI* **P** E200
BROWNSTONE PLAYHOUSE **P** A107
BY JOHANNE *Curated by Denise* **E** K220
CADDIS **E** C105
CALHOUN & CO. **P** A110
CALYER CERAMICS **E** C107
CAMBRIDGE IMPRINT **P** F214
CANDYLAB **E** M224

C - E

E ESSEX GARDEN LEVEL
E ESSEX GROUND LEVEL
P PIER 36

CANDYLABS *Magnify Showroom*

P A106

CÂPÂ JEWELRY

P A5

CARDIGANG

P C212

CAROLINE FRANCIS

E M233

CAROLYN KEYS

E H12

CARPE DIEM PAPERS *Crow & Canary*

P A100

CASHMERE MOON ~VEGAN BODYCARE~ *BLMAI*

E K202

CAST OF STONES *Karen Alweil Studio*

P E406

CAVALLINI & CO.

P E401

CÉLESTE MOGADOR

E K205

CENTINELLE

P D111

CHAN LUU

E H211

CHANOMA *SAIKAI*

P E200

CHARVET EDITIONS

E D113

CHILEWICH *Aesthetic Movement*

E G116

CHIVE

P C306

CIARA JADE DOCKERY

E C107

CINQPOINTS

E G120

CIRERIE DE GASCOGNE

E H4

CISE *BLMAI*

P C109

CIVIL ALCHEMY

E K204

CLEVERHOOD

E H221

CLOVERPOST JEWELRY

E L6

COLLECTIVE HUMANITY *Global Artisan Project*

E M106



COMMON *SAIKAI*

P E200

COMMONWEALTH PROVISIONS *American Design Club*

P A114

COMMUNITIE

E J203

CONIFER HOMEWARES

P F218

COPPERMILL KITCHEN

P A319

CORO CORA

E L100

COSE NUOVE

P B205

CRAFT BOAT

P F219

CRAIGHILL

E C101

CREATIVE WOMEN *Powered By People*

P E101

CRESCENT SIMPLES

P B107

CROW & CANARY

P A100

CUSHENDALE WOOLLEN MILLS

P E205

CYRC.

P H312

D HEART D

E K213

DAILY CANDY BY MALIBU SUGAR *Karen Alweil Studio*

P E406

DANIELLA LEHAVI

P B305

DAVID AUBREY JEWELRY

P F301

DAVID ZWIRNER BOOKS

P B101

DAVISTUDIO FINE PORCELAIN

P C206

DEA DIA

P E8

DEAR ANNABELLE *Karen Alweil Studio*

P E406

DEAR BENI

P C104

DEAR BOTANICS

P NOURISH

DEAR HANCOCK *Crow & Canary*

P A100

DEBBIE FISHER

P F1

DEBORAH RHODES

E A109

DEEPA GURNANI

E J221

DEVI ARTS COLLECTIVE JEWELRY

E H10

DEVON LIEDTKE

E H200

DMC ORIGINAL ART *BLMAI*

E K201

DOTTI

P B3

DOTY CHOU OBJECTS

P A4

DOVE AND DONKEY

P B221

DR. VRANJES

P B303

DRUTHERS *Nutty Rice Showroom*

P E213

DUMAE

P A304

DUNE SUNCARE

P E17

DVAA

E J200

E. FRANCES PAPER

P A102

EARTH & NEST *Aesthetic Movement*

E G110

EARTH FRIENDLY STARLIGHTZ

P G218

EAST END PRESS

P A103

EAST FORK POTTERY

P E201

EATSLEEPDOODLE

P F309

ECO-KIDS

E M109

EKOBO

E A114

ELEMENSE *SAIKAI*

P E200

E - H

E ESSEX GARDEN LEVEL
E ESSEX GROUND LEVEL
P PIER 36

ELEMENTS TRUFFLES

E L5

FOSSETTE PARIS

E A114

HAMICO

E L3

ELEVATE

E J207

FRANCA NYC

P F204

HANGAI MOUNTAIN TEXTILES

E A106

ELORO *Karen Alweil Studio*

P E406

FREDERICKS & MAE *Aesthetic Movement*

E C122

HANSEL FROM BASEL

P C115

EMILIE SHAPIRO STUDIO

E M103

FUN FACT CO. *American Design Club*

P A114

HAPPY PLACE BRAND *Nutty Rice Showroom*

P E213

ESCUYER

P A115

FUTAH *S2 Showroom*

E K211

HAPTIC LAB

P H206

EVANGELINE LINENS

E D103

GABRIEL+SIMONE *Karen Alweil Studio*

P E406

HARPERCOLLINS PUBLISHERS

E L115

EVERGREEN SUMMER

P F306

GARY BODKER DESIGNS

E B106

HARTMAN

E F104

EXACLAI R CLAIREFONTAINE RHODIA

P E308

GARZINI

P G1

HASAMI PORCELAIN *SAIKAI*

P E200

FABLE NEW YORK

P A3

GEOMETRY *Karen Alweil Studio*

P E406

HAZELMADE

P G309

FARMHAUS + CO. *American Design Club*

P A114

GEORGIE PAWS *Karen Alweil Studio*

P E406

HELLEN VAN BERKEL HEARTMADEPRINTS

P F207

FAWNE

E M226

GESTALTEN

P H204

HELLER

E D109

FAZEEK *Aesthetic Movement*

E G118

GHARYAN STONEWARE

P D205

HELMSIE *Karen Alweil Studio*

P E406

FELIX DOOLITTLE *Crow & Canary*

P A100

GINGIBER *Crow & Canary*

P A100

HIGHTIDE USA

P C315

FELT+FAT

E K200

GIR *Pattern Brands*

E C111

HILDE SOLIANI *Mon Oeil Brands*

E C114

FIELD KIT

P E101

GLOBAL AFFAIRS

P F211

HISO *S2 Showroom*

E K212

FIELD NOTES BRAND

P A113

GOOSE GREASE *Karen Alweil Studio*

P E406

HISTOIRES DE PARFUMS

P E9

FILLING SPACES *Aesthetic Movement*

E G112

GOTHAM GOODS

P B211

HOLCOMB

P D115

FINN

E J215

GRAF LANTZ

P A400

HOME OF THE BRAVE

P F208

FLAUS

P NOURISH

GRAPHIC IMAGE *Aesthetic Movement*

E G100

HOMELAND *SAIKAI*

P E200

FLECK *Powered by People*

P E101

GRYMATTR

E C115

HONEY LOOM DESIGNS

E M231

FOG LINEN WORK

P E104

GUESTS ON EARTH

P H1

HOT COOL TOKYO

P H202

FOOD HUGGERS

P A313

HAITI PROJECTS' MAISON D'HAITI

E M116

HOUSE NO. 23 *Karen Alweil Studio*

P E406

FOR TMRW *BLMAI*

E K217

HALFPENNY POSTAGE *Karen Alweil Studio*

P E406

HOUSE OF GOOD MERCANTILE

E D3

FORIA

P NOURISH

HAM

P D104

HOUSE OF LYRIA

E B108



H - L

HOUSE OF NUNU <i>American Design Club</i>	E H201
HUMBER	P A114
ILAN	E H203
ILEX STUDIO	E B101
IMMODEST COTTON <i>Aesthetic Movement</i>	E G127
IMPROPER CUP <i>Magnify Showroom</i>	P A106
INDEGO AFRICA	E J201
INDIGO ELEVEN / DAVID FUSSENEGGER <i>Karen Alweil Studio</i>	P E406
INOUI EDITIONS	E K206
INSPIRED PERU	P F303
INTENT	E F101
INTIEARTH	P H315
IRREGULAR SLEEP PATTERN	P C310
ISATOPIA	P G208
ISHIZUKA GLASS (ADERIA)	E E1
ISOBEL & CLEO	P D213
ITO BINDERY SAIKAI	P E200
ITZA WOOD	E E100
IXÖQ	P D112
IZIPIZI	P E403
JAMINI PARIS	P H216
JBRODY & CO.	E A108
JEANNINE CARSON CLAY <i>American Design Club</i>	P A114



JENNA BEE	E J220
JENNIFER SLATTERY	P E207
JENNY WALKER JEWELRY	P E11
JILL & ALLY <i>Karen Alweil Studio</i>	P E406
JINSOON <i>Van Pelt</i>	P G301
JIU SAIKAI	P E200
JOANNA BUCHANAN	P B312
JOHANNA HOWARD HOME	E B122
JOHNNY VACAY	P C105
JOLLITY & CO + THE DAYDREAM SOCIETY	P B311
JOSHI	P C108
JOYN	E M232
JULIE ROFMAN	P D101
JUST DUTCH	E L4
K/LLER COLLECTION	P H319
KAICO SAIKAI	P E200
KAMASADA SAIKAI	P E200
KAMENOKO TAWASHI SAIKAI	P E200
KARAMELLER <i>Magnify Showroom</i>	P A106
KAREN ALWEIL STUDIO	P E406
KATIE KIME	E J213
KELLY + JONES	P NOURISH
KI KI KI SAIKAI	P E200
KILIIM	E E106

KIN & CARE	E M226
KOFF	P G313
KOIZUMI GLASS SAIKAI	P E200
KOLLAB <i>Karen Alweil Studio</i>	P E406
KOSTA BODA	P B301
KOTT	P D107
KURIER	P F212
KVD NYC <i>Aesthetic Movement</i>	E G124
L'ARCOLAIO	E B107
LA CASA <i>Global Artisan Project</i>	E M112
LA CERISE SUR LE GATEAU	P F201
LADHA BLMAI	E H223
LAGUIOLE CLAUDE DOZORME CUTLERY	E A100
LATIERRA	E H217
LAURA ELIZABETH JEWELRY	E M101
LAUREN HB STUDIO	P D207
LE CHOCOLAT DES FRANCAIS <i>Aesthetic Movement</i>	E E4
LEAF SHAVE	P NOURISH
LEMON JELLY <i>Nutty Rice Showroom</i>	P E213
LES CERAMIQUES DE LUSSAN	E L102
LES CHOSES SIMPLES	P E106
LETTERFOLK <i>Pattern Brands</i>	E C111
LETTERMADE	P B315
LEUCHTTURM1917 <i>Lighthouse Publications</i>	P H201

E ESSEX GARDEN LEVEL
E ESSEX GROUND LEVEL
P PIER 36

L - M

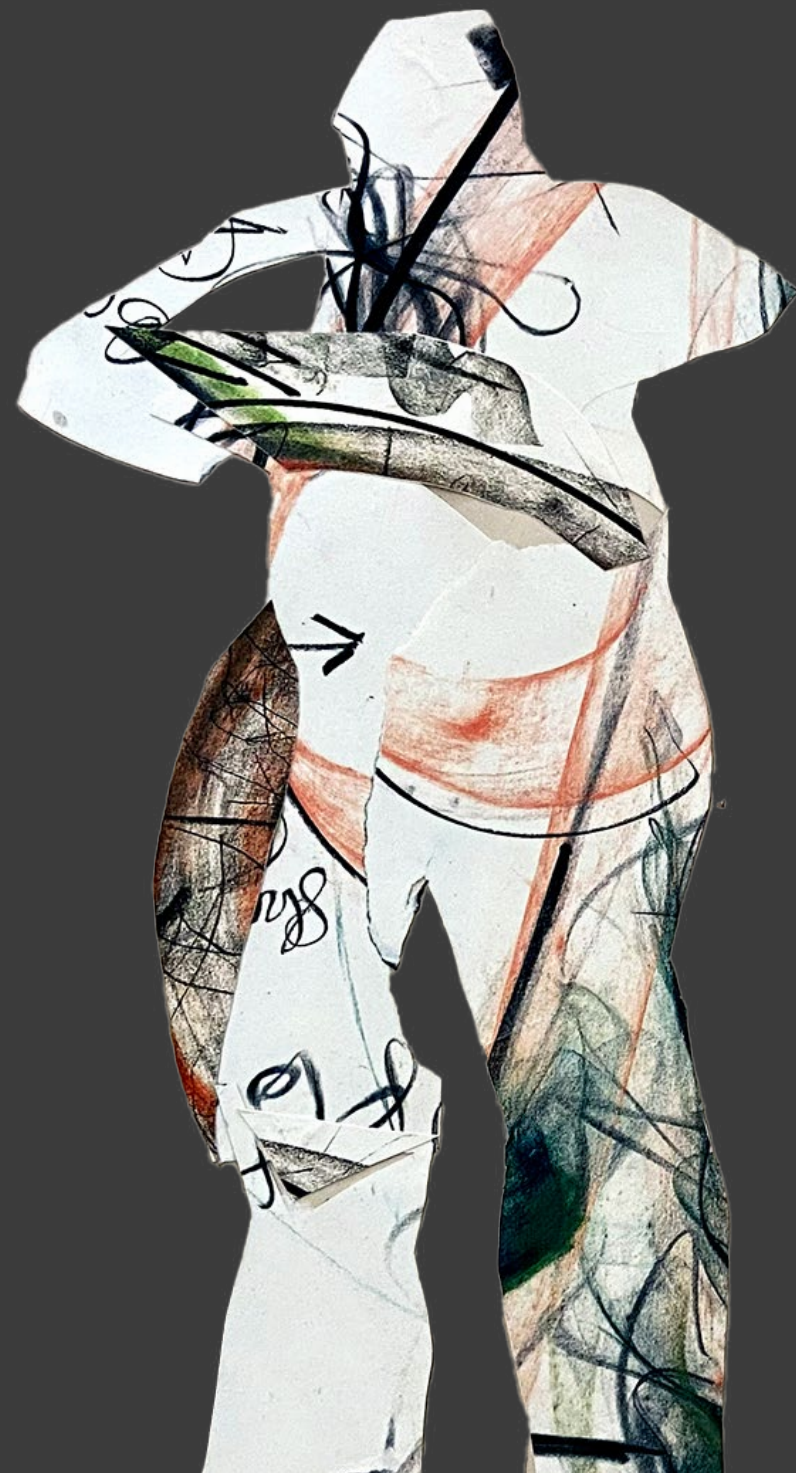
E ESSEX GARDEN LEVEL
E ESSEX GROUND LEVEL
P PIER 36

LEXON	P B100	MAD ET LEN <i>Mon Oeil Brands</i>	E C114	MELANIE SIMON <i>Van Pelt</i>	P G301
LIAMOLLY	E M235	MADISON + GREEN	E H209	MELISSA DE LA FUENTE	E E2
LIGA	P B314	MAGNIFY SHOWROOM	P A106	MEO FUSCIUNI <i>Mon Oeil Brands</i>	E C114
LIIS <i>Van Pelt</i>	P G301	MAILEG	P E303	MEREWIF	E H5
LIKHA	E M237	MAISON 203	P C202	MERIGOLD	P NOURISH
LINED DESIGN	E H1	MAISON D'ETTO <i>Van Pelt</i>	P G301	MERIPPA	E M230
LINEN TALES	P H311	MAISON MADISON NEW YORK	E A116	MESHWORKS <i>American Design Club</i>	P A114
LINENME	P A308	MAISON MILAN	E A104	MESSAGE	E J205
LINN	P D217	MAKAUA	P D102	MIA MELANGE	P D109
LISA B.	E J209	MALA THE BRAND <i>Magnify Showroom</i>	P A106	MICHAEL WAINWRIGHT USA	E A110
LITTLE LIGHTS	P A101	MAMO	P C5	MIHAN AROMATICS <i>Mon Oeil Brands</i>	E C114
LODESTONE CANDLES <i>Karen Alweil Studio</i>	P E406	MANU NANU	P E16	MIMIPAMBO	E H6
LOHN	P C1	MARIA BOUVIER <i>Elevate</i>	E J207	MINORI	P NOURISH
LOOM IMPORTS <i>Global Artisan Project</i>	E M122	MARGO SELBY	E C106	MISC. GOODS CO.	P D106
LOOM.IST <i>Powered by People</i>	P E101	MARK KREBS	E E104	MISETTE	P B321
LUCAS JACK	E H11	MASHA TEA	P F100	MISS MAUDE'S BAR OF CHOCOLATES	P A6
LUCIE KAAS	P E304	MATCHDADDY <i>Karen Alweil Studio</i>	P E406	MISSONI	E B115
LUKE'S TOY FACTORY	E L2	MATER SOAP	P NOURISH	MOBIUS KERAMIKK	P C112
LULU DESIGNS	P A300	MAX ID NY	E H205	MODE LIVING	P C101
LUND LONDON <i>Magnify Showroom</i>	P A106	MAYRON'S GOODS + SUPPLY	P E7	MODERN SPROUT	P A307
LUXE DOMINOES	P E221	MBARE <i>Powered by People</i>	P E101	MOGLEA	E C103
M I S T R I BY RÊVE	P B209	MCCONNELL	P E211	MOISMONT <i>Aesthetic Movement</i>	E G126
MAAKO	P D103	ME & K	P H316	MOMA <i>Aesthetic Movement</i>	E G128
MACON&LESQUOY	P H318	MEG COHEN	P D113	MON OEIL BRANDS	E C114
		MELANIE ABRANTES DESIGN	E J217		



M - P

E ESSEX GARDEN LEVEL
E ESSEX GROUND LEVEL
P PIER 36



MOONCHILD SLIPPER SOCKS *American Design Club* **P** A114
MOONSTAR SAIKAI **P** E200
MOORE AND GILES **P** C305
MOTHER SHRUB **P** NOURISH
MOTOSHIGE SAIKAI **P** E200
MOUNTAIN MAIDEN CO. **P** B111
MQUAN STUDIO **P** H219
MR. BODDINGTON'S STUDIO **P** F308
MUD AUSTRALIA **E** B100
MULXIPLY **P** G215
MUNGO **P** H317
MURPHY & DAUGHTERS *Karen Alweil Studio* **P** E406
MUTENKA SEKKEN SAIKAI **P** E200
MUZALUCI **P** G302
MY BOB, USE YOUR HEAD! **P** D211
MY DARLIN' **P** C103
MY SAVORY TABLE *Global Artisan Project* **E** M120
MYUM - THE VEGGY TOYS **P** E12
MYWALIT **P** B112
NA NIN **E** K215
NALA CARE **P** NOURISH
NAMAI **E** K207
NATIVE UNION **P** C311
NATTIOT *American Design Club* **P** A114

NEANDERTAL *Mon Oeil Brands* **E** C114
NETTE NYC *Van Pelt* **P** G301
NEVER HAVE I EVER **P** NOURISH
NEXT CHAPTER STUDIO *American Design Club* **P** A114
NIMES **E** J219
NIWAKI LTD **P** E319
NO WRONG ANSWERS *American Design Club* **P** A114
NOA LUX *Magnify Showroom* **P** A106
NOMATIQ *American Design Club* **P** A114
NOPALERA **P** H210
NORDEN **E** B102
NOTABAG **P** G213
NOTED BY COPINE *Magnify Showroom* **P** A106
NOTEM-STUDIO *Fiorentina* **E** C113
NUDE *Karen Alweil Studio* **P** E406
NUTTY RICE SHOWROOM **P** E213
NUUNA BY BRANDBOOK *Fiorentina* **E** C113
NYCHAIR SAIKAI **P** E200
O MY BAG **P** F210
OATS & RICE **P** G303
OBJECT INDEX **P** F202
OBSHAY WEIGHTS **E** H3
OCTAEVO *Fiorentina* **E** C113
OGASAWARA SAIKAI **P** E200
OHHO **P** E14

OLIBANUM. **P** E10
OLIVE & LOOM **E** M226
OLIVER FLYNN **P** NOURISH
OLLI ELLA **P** E301
OMY **P** B201
ONSEN *Pattern Brands* **P** C111
ONYX COFFEE LAB **P** **E** F105
OPEN EDITIONS **E** L109
OPEN SEA DESIGN CO. **E** H213
OPEN SPACES *Pattern Brands* **E** C111
ORA **P** NOURISH
ORIGINAL DUCKHEAD **P** F312
ORREFORS **P** B301
OSMOLOGY **P** A312
OSMOS STUDIO *Powered by People* **P** E101
OSTRICHPILLOW *American Design Club* **P** A114
OTHERS TRADE FOR HOPE *Global Artisan Project* **E** M114
P.F. CANDLE CO. **P** B203
P.I.PROJECT *Global Artisan Project* **E** M108
PAINT ANYWHERE **P** B104
PALERMO BODY **P** F102
PANTONE BY COPENHAGEN DESIGN **P** C100
PAPIER **P** B407
PAPIER TIGRE **P** G202

P - S

PARROTFISH

PARTY SALLY *Crow & Canary*

PATRICK CAIN DESIGNS *Karen Alweil Studio*

PATTERN BRANDS

PAUL SMITH

PAUME

PEOPLE I'VE LOVED

PERSONS OF INTEREST

PETARI *SAIKAI*

PETITES POMMES CLASSIC FLOATS

PEUGEOT

PHAIDON

PHIL GAUTREAU WOOD DESIGN

PI PROJECT BY PILAR RESTREPO
Global Artisan Project

PIECEWORK PUZZLES

PIER SIX PRESS *Crow & Canary*

PIGEON TOE CERAMICS

PILGRIMWATERS

PILLOWPIA *Powered by People*

PINK LEMONADE

PINK STORIES

PINTRILL *Nutty Rice Showroom*

PISSENLIT

POINTED LEAF PRESS

P NOURISH

P A100

P E406

E C111

P D221

P A2

E L109

P NOURISH

P E200

P C111

P B304

P C301

E D105

P M118

P C200

P A100

E J217

P H309

P E101

P C309

P E215

P E213

P B309

E A120

POKETO *Pattern Brands*

POMEGRANATE

POPPY & POUT

PORT CANVAS

POTETE

POURED CANDLE BAR

POWERED BY PEOPLE

PRACTICAL MAGIC *Karen Alweil Studio*

PREMIUM COFFEE BAR BY HARIO
AND ORIGAMI

PRETTI.COOL

PRINTFRESH *Karen Alweil Studio*

PRINTWORKS *Aesthetic Movement*

PROPER TABLE

PURPLE MOUNTAIN RUGS

QHUE AROMA

QUAIL

QUIET LINES DESIGN *Crow & Canary*

R.NORMAN X PELO MODERN HAIR

R+D.LAB

RAEN *Nutty Rice Showroom*

RAMONA & RUTH *Crow & Canary*

REBEKAH J. DESIGNS

RED CAP CARDS *Crow & Canary*

REDECKER

E C111

P E217

E J211

E H219

E M238

P F319

P E101

P E406

P A406

P G211

P E406

E C116

E K209

P F200

P E5

E A115

P A100

P G312

P D201

P E213

P A100

E J217

P A100

P G319

REISFIELDS

REUNION

RIFLE PAPER CO.

RINGO

RITUAL CERAMICS

RIVER SONG

ROGUE PAQ LUXURY
CANNABIS ACCESSORIES

ROOMYTOWN

ROSE + CO. CANDLEMAKERS

RŌZ HAIR CARE *Van Pelt*

RUMBLE CARDS

SAIKAI

SA SA SA *SAIKAI*

SABRE PARIS

SAFRAN EVERYDAY *American Design Club*

SAITO WOOD *SAIKAI*

SARA PILCHMAN *American Design Club*

SARDEL

SATOMI STUDIO

SAVED NY

SCARLETTE ATELIERS *Aesthetic Movement*

SEASON PAPER

SEE DESIGN

SEMIKOLON *Lighthouse Publications*

SEMPLI

E K219

P NOURISH

P E103

P C106

P C302

P H306

P C2

P G216

E B122

P G301

P B105

P E200

P E200

P B316

P A114

P E200

P A114

P B319

P H306

E F103

E G122

P B113

P H301

P H201

E H207

E ESSEX GARDEN LEVEL

E ESSEX GROUND LEVEL

P PIER 36



S - T

E ESSEX GARDEN LEVEL
E ESSEX GROUND LEVEL
P PIER 36



SERAX <i>Aesthetic Movement</i>	E C117
SETTINGS	P D219
SEVEN SUNDAYS STUDIOS	P H314
SGW LAB	P E3
SIAFU <i>Powered by People</i>	P E101
SIBILIA <i>Aesthetic Movement</i>	E G108
SIDAI DESIGNS <i>Aesthetic Movement</i>	E D120
SILVA MADE	P C4
SIR MADAM <i>Aesthetic Movement</i>	E D115
SIROHI <i>Powered by People</i>	P E101
SLOANE STATIONERY <i>Karen Alweil Studio</i>	P E406
SN SAIKAI	P E200
SOAP SO CO.	P A1
SOFTROMAINE	P E15
SOH MELBOURNE	E H220
SOIL TO STUDIO	E D111
SOJOURN POTTERY	P C316
SOKO <i>BLMAI</i>	P C216
SOLAR ECLIPSE	P F310
SOMERSET MOSS	P NOURISH
SORI YANAGI <i>SAIKAI</i>	P E200
SOUVENIR STATIONERY	E I200
SPEKS	P F311
SPENCER DEVINE	E M239

SPOKEN FLAMES <i>Magnify Showroom</i>	P A106
SPREZZ	P C314
SQUARE TRADE GOODS	P G307
STARLIGHT	P E F105
STILFORM <i>Lighthouse Publications</i>	P H201
STORA SKUGGAN <i>Mon Oeil Brands</i>	E C114
STUD PILLOWS <i>BLMAI</i>	P F206
STUDIO CARTA	P E216
STUDIO GRUN	P D110
STUDIO ROOF <i>American Design Club</i>	P A114
STUDIOSOPHIASOPHIA	P C308
SUCK UK	P A109
SUMMER HOURS	E M105
SUNDAY CITIZEN	E M227
SUNSIDE & CO.	P C107
SWEET BELLA	P E314
TAKENOBU IGARASHI <i>SAIKAI</i>	P E200
TAL & BERT	E J214
TALKING TABLES	P A311
TALLO DE OLIVO <i>Powered by People</i>	P E101
TATARA RAZORS	E H7
TATTLY	P F302
TENN PRAIRIE <i>Aesthetic Movement</i>	E G102
TERRA	P E13
TERRAFIRMA CERAMICS INC.	E A017

TEXTURABLE <i>Elevate</i>	E J207
THAT'S SO ANDREW <i>American Design Club</i>	P A114
THATCH	E L106
THE COMMONFOLK COLLECTIVE <i>Karen Alweil Studio</i>	P E406
THE COMPLETIST	P B115
THE CRAFTWORK STUDIO	P D105
THE FALLS	P G304
THE FLORAL SOCIETY <i>Aesthetic Movement</i>	E D118
THE GOOD TWIN	P F300
THE JACKSONS LONDON	E J208
THE NEW SAVANT	P G201
THE NICE FLEET	P G206
THE PAPER CURATOR <i>American Design Club</i>	P A114
THE PLAY GROUP	P F305
THE POTION COLLECTION	P E3
THE TAKE BACK BAG	P C98
THE USB LIGHTER COMPANY <i>Karen Alweil Studio</i>	P E406
THIS IS LATINAMERICA <i>Global Artisan Project</i>	E M110
THIS NIGHT	E J204
THOMAS O'BRIEN TOB AERO <i>Aesthetic Movement</i>	E D115
TI-A WOVEN GOODS	P D206
TINY HOORAY <i>Crow & Canary</i>	P A100
TINY WOLF STUDIO	P F304
TOLEMAIDE	P E218

T - Z

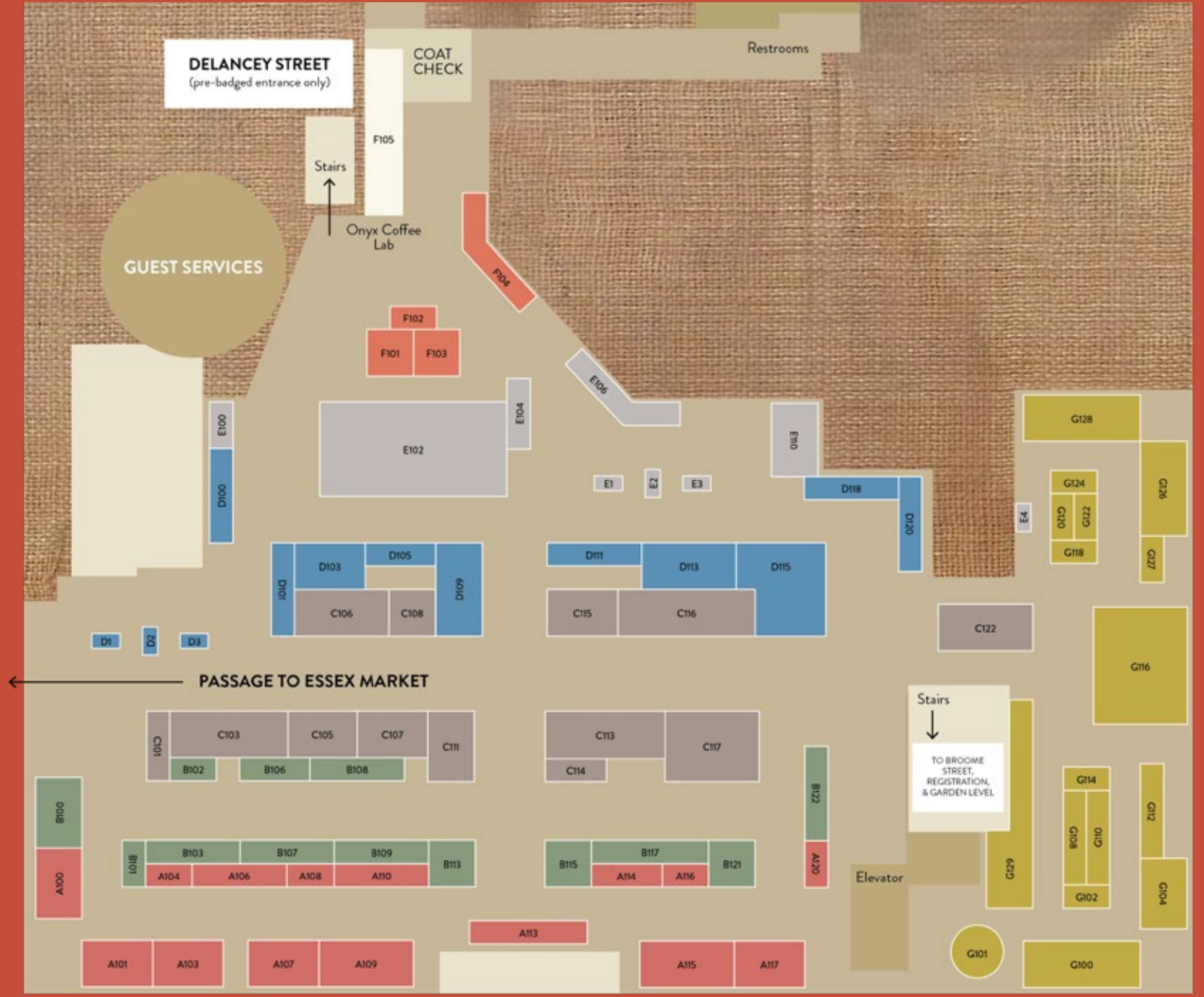
TORTUGA FORMA **E** C108
TOSARYU SAIKAI **P** E200
TOYAMA HAMANO SAIKAI **P** E200
TOYO SASAKI SAIKAI **P** E200
TRACEY TANNER **E** K203
TRAVAUX EN COURS **P** F203
TRAVELER'S COMPANY **P** A315
TREKO CHILE **E** B103
TRES CUERVOS **E** H8
TROPICAL TAPESTRY **P** D209
TROVELORE **P** E102
TWENTY TWO WEST **P** B102
TWW WHOLESALE **P** F215
UCHINO **P** A303
UMBRA **P** A402
UNCLE GOOSE **P** B109
UNIQU'UITY **E** B109
URUTHYST *Elevate* **E** J207
UWP LUXE **P** B108
VAN PELT **P** G301
VERLOOP | KNITS **P** E110
VERVE CULTURE **P** B401
VESPER *Magnify Showroom* **P** A106
VILLA NO. 7 *American Design Club* **P** A114
VITRICCA IANNAZZI **P** C210

VOYAGE ET CIE **E** B113
WALLACE SEWELL **P** H310
WE MIGHT BE TINY *Karen Alweil Studio* **P** E406
WEED'D **E** D1
WHITE + WARREN **E** L104
WILDFLOWER CAMEL CO. **P** NOURISH
WOLF & WILLA *Curated by Denise* **E** J223
WOOJ **E** F102
WREN **P** B106
WRITE TO ME *Karen Alweil Studio* **P** E406
WTHN **P** E6
WYETH **E** J206
YAHAE **E** H215
YAMAMOTO-KATSUNOSUKE SHOTEN SAIKAI **P** E200
YAMAZAKI HOME **P** E107
YANAWARA NEW YORK **E** M225
YEN TING CHO **P** C218
YEPIE PAPER *Crow & Canary* **P** A100
YIELD *Pattern Brands* **E** C111
ZAFFERANO AMERICA **P** C99
ZIZIA BOTANICALS **P** E4
ZORRO Y JAGUA *Powered by People* **P** E101
ZOZ WELLNESS *BLMAI* **P** B302
ZÜNY **P** F213

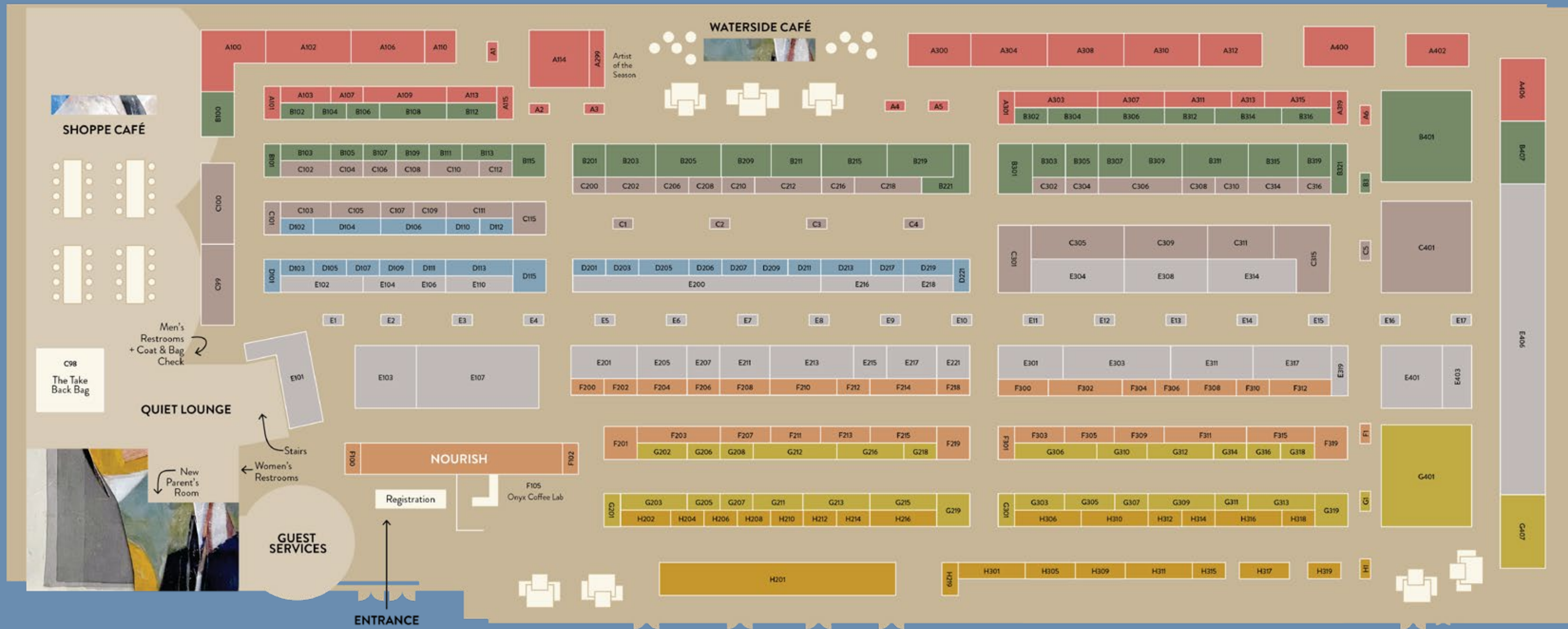
E B113
P H310
P E406
E D1
E L104
P NOURISH
E J223
E F102
P B106
P E406
P E6
E J206
E H215
P E200
P E107
E M225
P C218
P A100
E C111
P C99
P E4
P E101
P B302
P F213

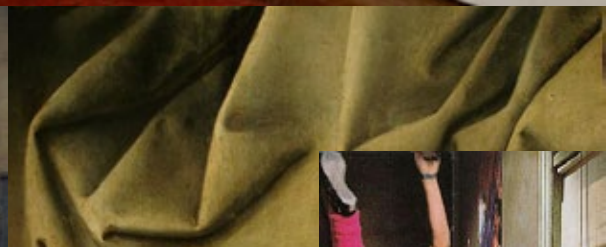
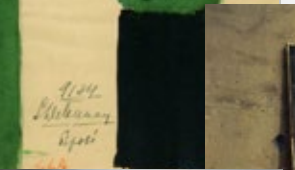
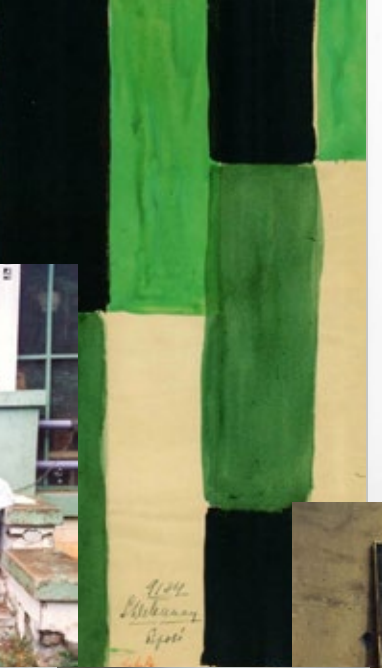
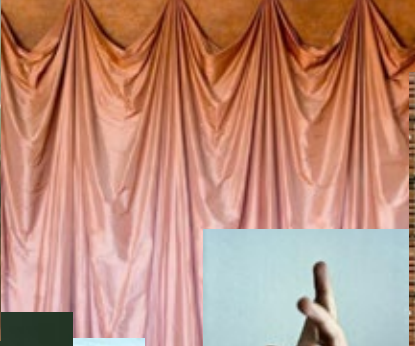
E ESSEX GARDEN LEVEL
E ESSEX GROUND LEVEL
P PIER 36



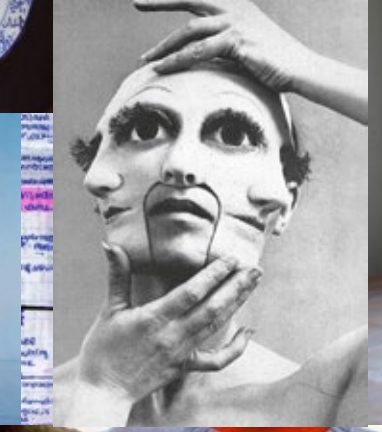


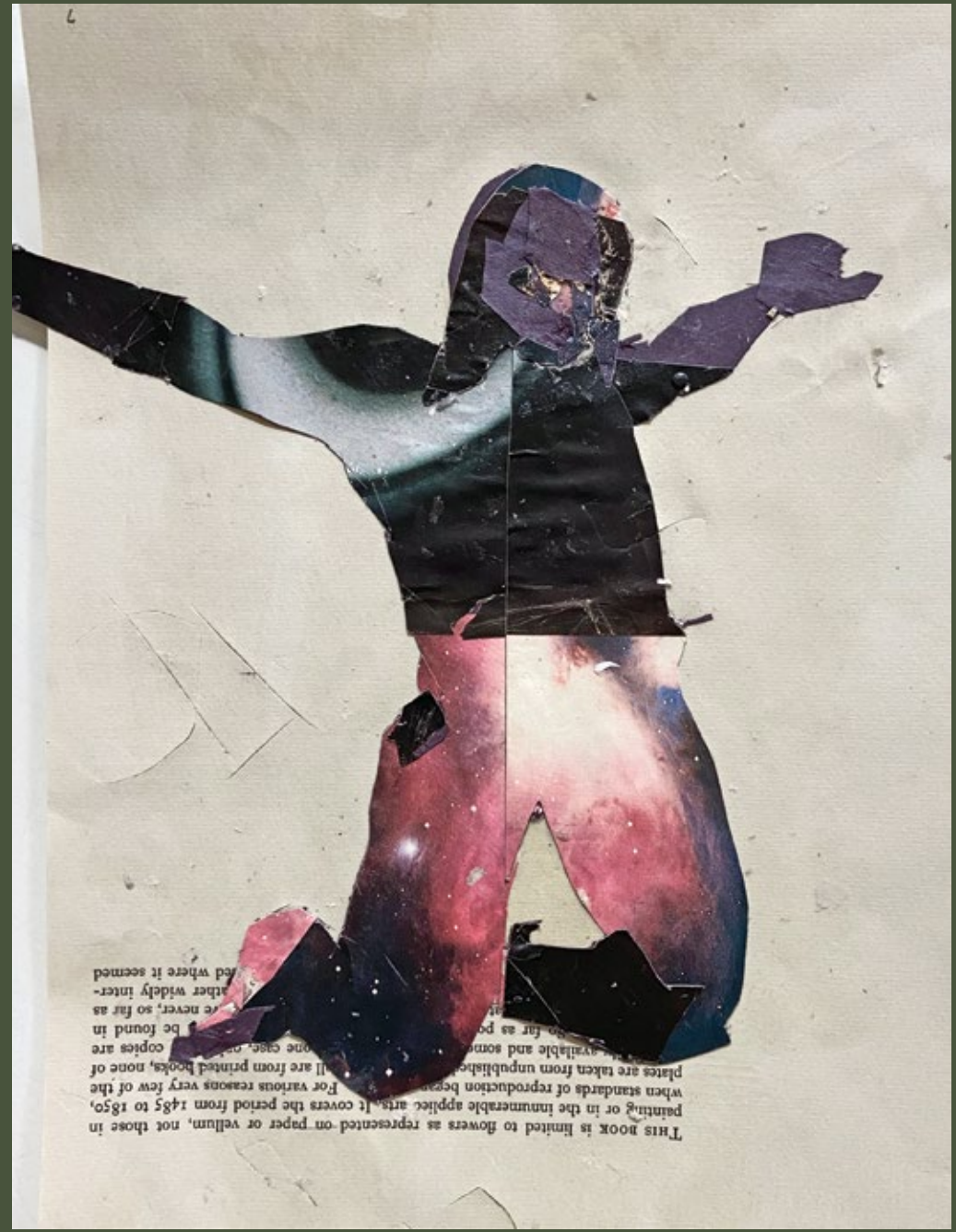
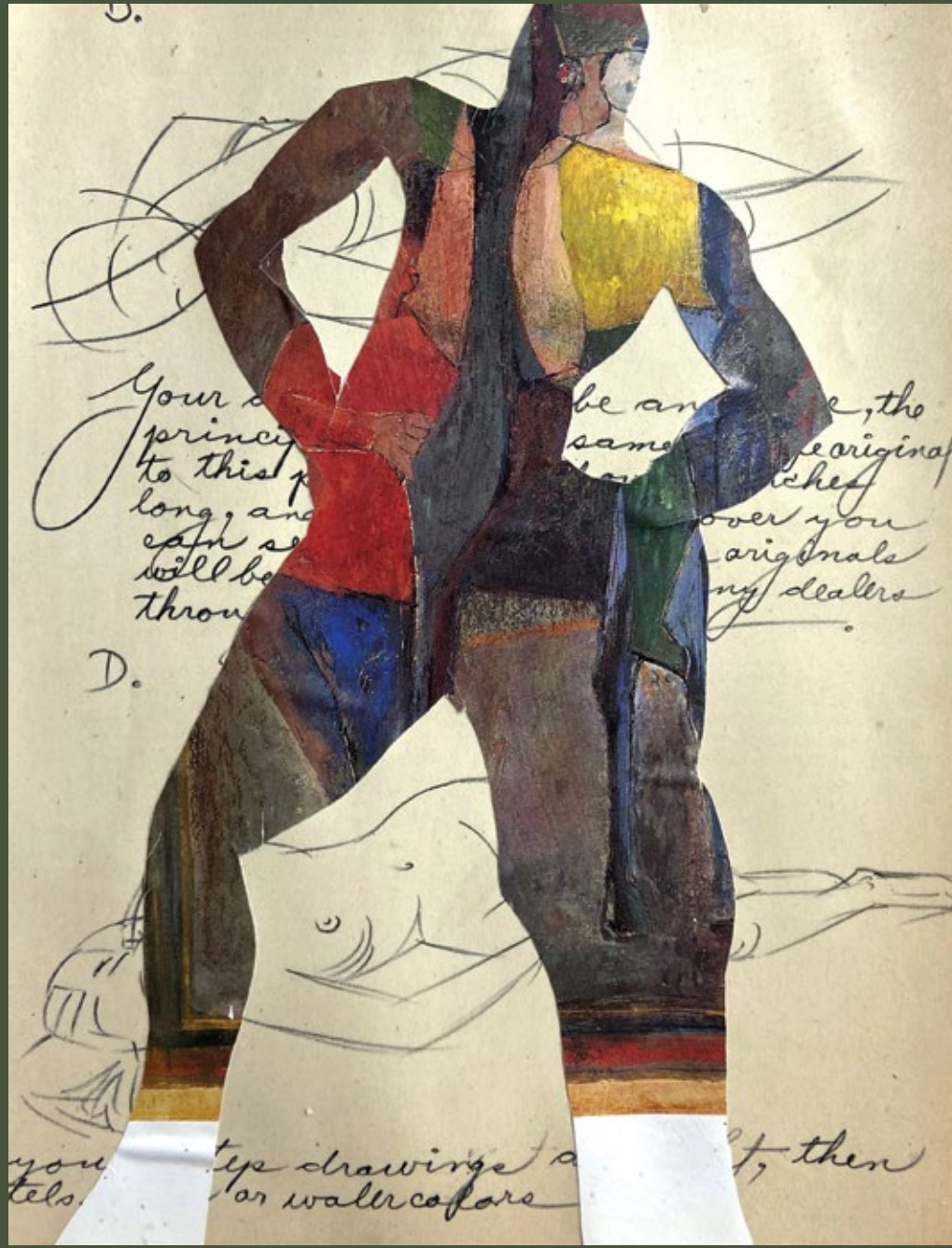
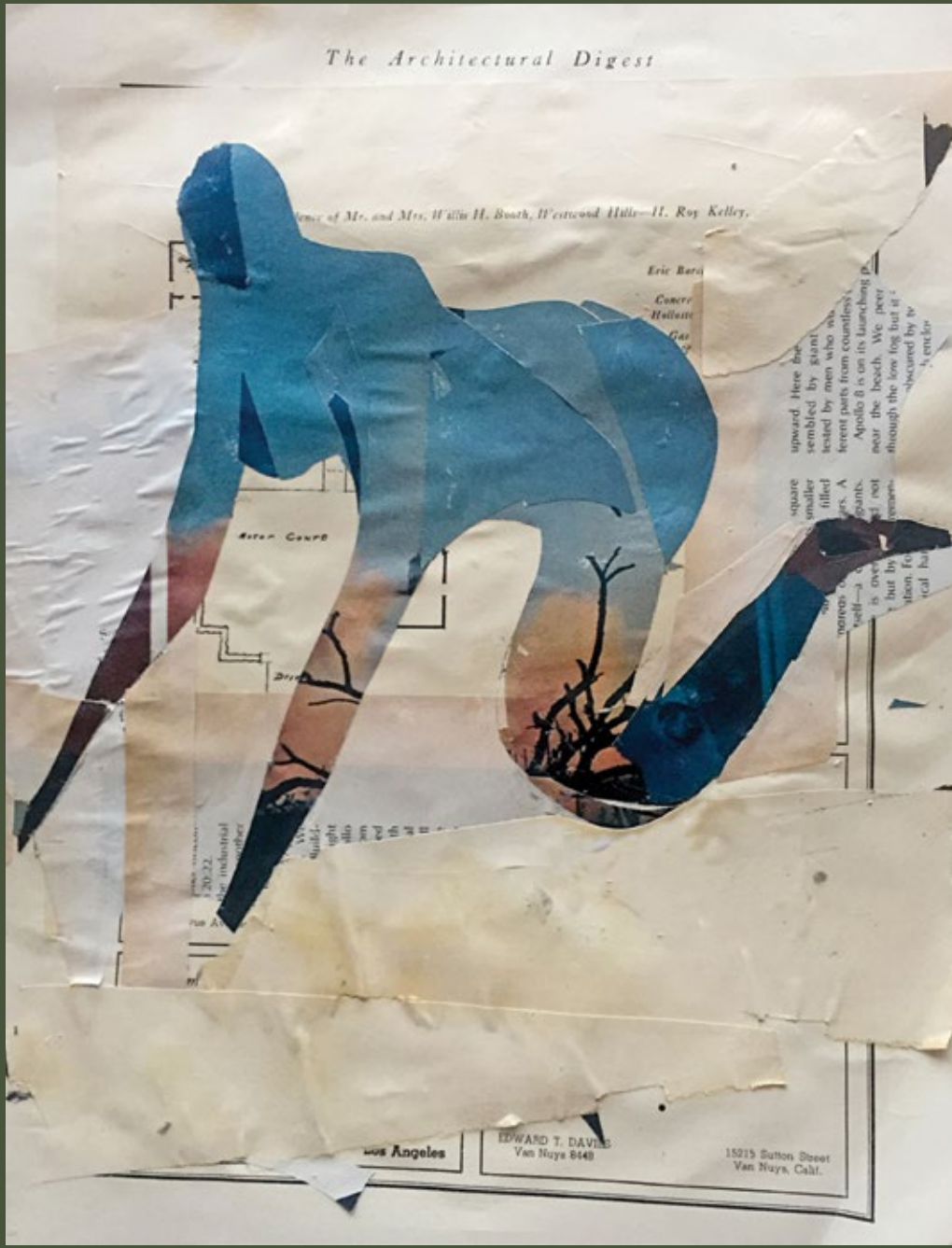
PIER 36 RIVERSIDE PAVILION





CIAO





BLACK LIVES MATTER ACTION INITIATIVE

We are excited to announce the brands participating in Shoppe Object's Winter 2024 Black Lives Matter Action Initiative! BLMAI is all about fostering a more representative home and gift market by sponsoring talented Black designers and business owners each season. This winter's lineup includes rule-breaking pillows, beautiful baked goods, naturally-nurturing beauty products, and more!

BLMAI

SHOPPE OBJECT'S BLACK LIVES MATTER ACTION INITIATIVE

ZOZ WELLNESS | B302

Seattle, WA

Handcrafted, sustainably sourced natural remedies for body and mind. ZoZ Wellness harnesses resilient and sustainable plant medicines, promoting a holistic approach to well-being.

DMC ORIGINAL ART | K201

Brooklyn, NY

At DMC Original Art, imagination meets craftsmanship to create tableware, decor, and artworks that breathe life into both homes and workspaces.

LADHA | H223

Oakland, CA

Ladha creates timeless, versatile jewelry designed to bring out true personality through laidback luxury that will last a lifetime.

CASHMERE MOON | K202

Evans, GA

Cashmere Moon's products are simple, clean, and naturally skin-nourishing - always vegan and cruelty-free.

SOKO | C216

Brooklyn, NY

SOKO's ethically crafted jewelry is an ode to strong, powerful women. Each sustainably made piece connects the global marketplace with local artisans.

CISE | C109

Los Angeles, CA

CISE creates apparel that gives a voice to those in society who are typically ignored. Each garment displays subtle yet vocal messages that make a difference, one purchase at a time.

STUD PILLOWS | F206

Atlanta, GA

Stud Pillows is a collection of edgy pillows for fashion-forward spaces, creating inspiring, aesthetic pieces for the style rebels to bring home.

FOR TMRW | K217

New York, NY

FOR TMRW creates non-toxic and design-centric nail products that bring safe, accessible beauty tools to women of color.

BLONDERY | H208

Hudson Valley, NY

Woman-owned, New York bakery Blondery creates bite-size blondies that are as beautiful as they are delicious.

ALL VERY GOODS | H212

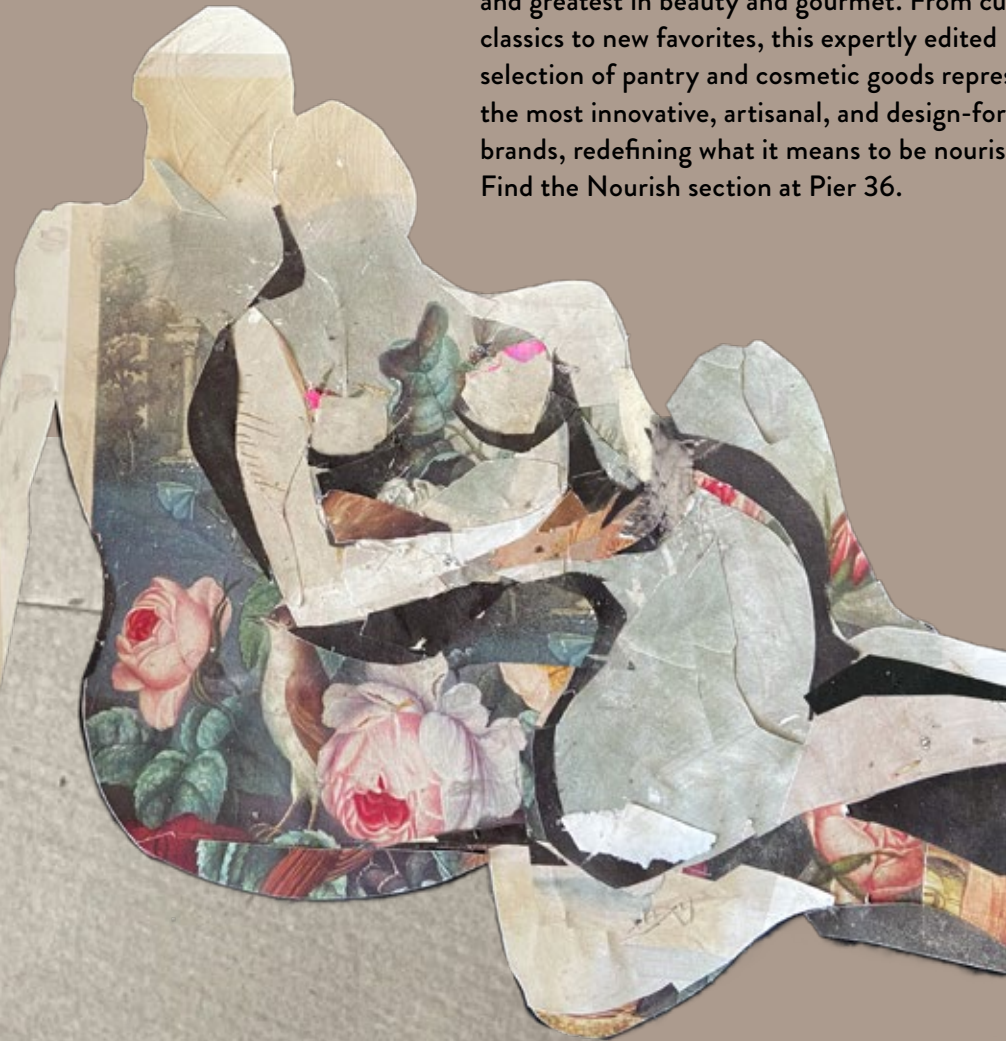
Washington, DC

All Very Goods' paper products, apparel, and accessories bring to life an alternate universe where the celebration and appreciation of diverse cultures is the norm.

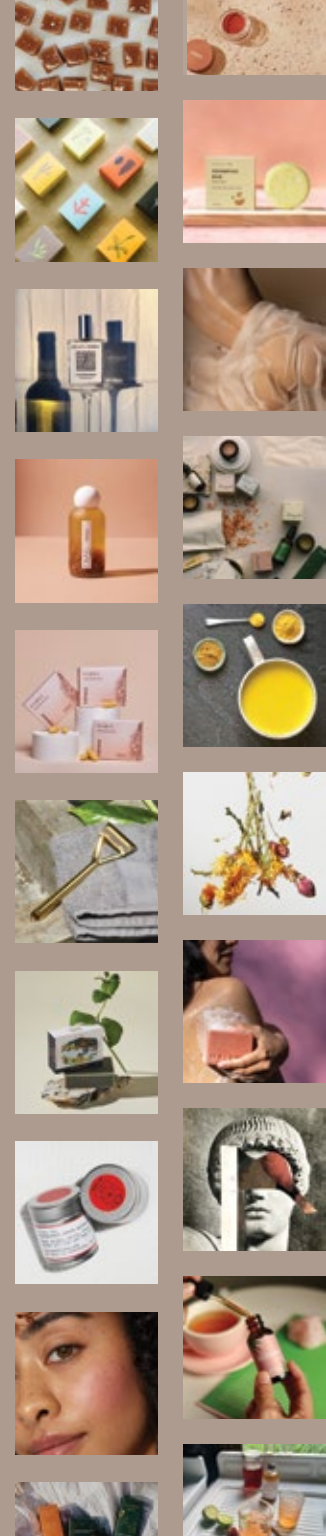
And find these BLMAI brands on Shoppe Online throughout the season:

- BON FEMMES
- BROWNSTONE PLAYHOUSE
- CANDID ART
- CEDRIC MITCHELL DESIGN
- CREATIVE VIBES ONLY
- ELEVATED TEA CO.
- GOLDEN EDITIONS
- IFSTHETIC
- SPIRITED CLOTH
- SUN & LACE

Curated by Dr. Maria Geyman, Vogue contributor and the naturopathic doctor behind Masha Tea, Shoppe Object presents a collection of the latest and greatest in beauty and gourmet. From cult classics to new favorites, this expertly edited selection of pantry and cosmetic goods represents the most innovative, artisanal, and design-forward brands, redefining what it means to be nourished. Find the Nourish section at Pier 36.



- ALTR SOAPS
- ANJALI'S CUP
- ANTO YUKON
- DEAR BOTANICS
- FLAUS
- FORIA
- KELLY + JONES
- LEAF SHAVE
- MASHA TEA
- MATER SOAP
- MERIGOLD
- MINORI
- MOTHER SHRUB
- NALA CARE
- NEVER HAVE I EVER
- OLIVER FLYNN
- ORA
- PARROTFISH
- PERSONS OF INTEREST
- REUNION
- SOMERSET MOSS
- WILDFLOWER CARAMEL CO.



- ANNA BECK
- COLLECTIVE HUMANITY
- HAITI PROJECTS' MAISON D'HAITI
- LA CASA
- LOOM IMPORTS
- MY SAVORY TABLE
- OTHERS TRADE FOR HOPE
- P.I.PROJECT
- PI PROJECT BY PILAR RESTREPO
- THIS IS LATINAMERICA

Created in partnership with ByHand, this exciting section features global goods from brands dedicated to preserving craft techniques, supporting artisan communities, and promoting the magical beauty of the handmade. Find The Global Artisan Project in Row M on the Garden Level at Skylight at Essex Crossing.

THE SHOPPE OBJECT GLOBAL ARTISAN PROJECT

THE TAKE BACK BAG

We're partnering with The Take Back Bag on their mission to reduce clothing waste, and hope you will too! Visit their SO-sponsored space on Pier 36's mezzanine level - near the Shoppe Cafe - to hear more about how they're saving the planet - one sweater, sock, and blouse at a time - and **receive your complimentary Take Back Bag to join the revolution.** Each Take Back Bag saves 15 pounds of landfill waste, reduces CO2 emissions, and conserves over 1500 gallons of fresh water. Get upstairs and grab one!



FDK FLORALS

The floral sculptures scattered around the venues were created by FDK Florals, founded by Brooklyn-based designer Fernando Kabigting. FDK Florals compositions are built from the deep desire to cultivate a serene imperfection and designed to suit a specific time, place or personality.
www.fdkflorals.com

NOURISH

THE SHOPPE THAT NEVER SLEEPS

The discovery continues all year round on our B2B digital marketplace, SHOPPE ONLINE. With the full community available to shop, including all the brands you love (and hundreds more not seen at the show), the marketplace is your go-to resource for curated buying, anytime.

ON SHOPPE ONLINE

- Connect and communicate with brands
- Browse thousands of products and place orders
- Discover makers you missed at the show
- Keep track of old favorites and new finds

The ABCs of SHOPPE ONLINE

Making buying easy – before, during, & after the show!

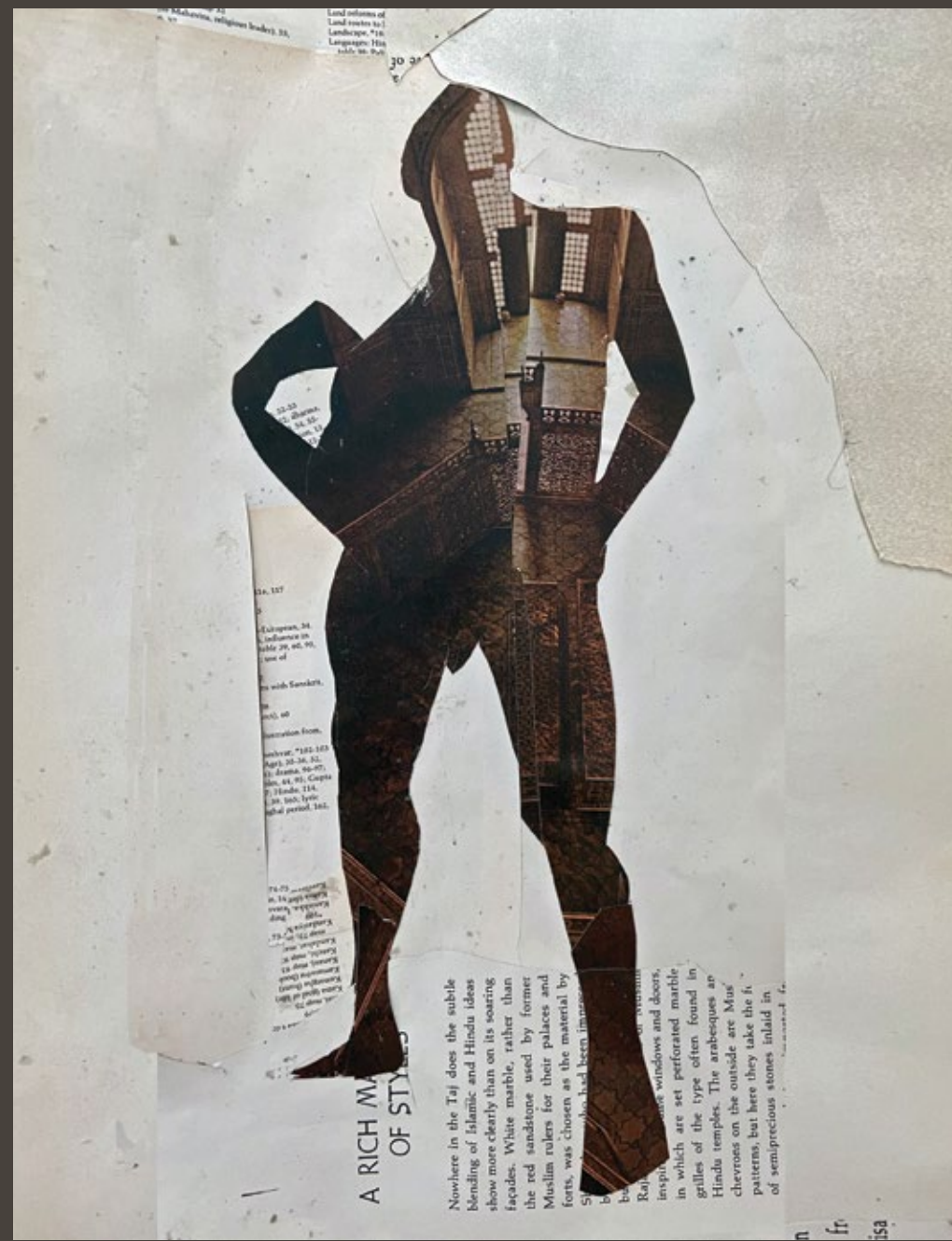


BUILD A CATALOG OF WHAT YOU LIKED!





log from Long
Smith made
Malays



**A RICH M
OF STYLES**

Nowhere in the Taj does the subtle blending of Islamic and Hindu ideas show more clearly than on its soaring facades. White marble, rather than the red sandstone used by former Muslim rulers for their palaces and forts, was chosen as the material by Shah Jahan, who had been impressed by the white marble of the Taj Mahal in Agra. Rajasthani windows and doors, in which are set perforated marble grilles of the type often found in Hindu temples. The arabesques on the outside are Muslim patterns, but here they take the form of semiprecious stones inlaid in

We are wishing you the best time while you're in the city; for us that means vivacious meals, glasses full of winter wines, and drifting through dreamy shops. Here are a few of our favorite haunts for all the above – find the complete round-up via the QR code.



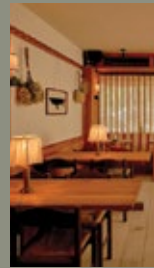
ERNESTO'S

259 E Broadway, New York, NY
Hailing from a seaside Basque town saturated with Michelin-star establishments, Ernesto's has a daily-changing menu with pintxos, mains, and desserts.



BANGKOK SUPPER CLUB

641 Hudson Street, New York, NY
An innovative twist on classic Thai. Pulling from Bangkok's late night food scene for a unique culinary journey, it's the after-hours experience where Bangkok Supper Club shines ...



ANAIS

196 Bergen Street, Brooklyn, NY
For the Brooklyn-bound: A natural wine bar and all day cafe in Boerum Hill that also serves up perfect pairings of books inspired by the life and lifestyle of Anaïs Nin.



THE LIBRARY AT THE PUBLIC

425 Lafayette Street, New York, NY
Somewhere between dinner bar and backstage lounge, downtown denizens, theatregoers, and artists alike rub elbows over an eclectic New York-influenced menu.



GOTHAM

E 3rd Street, New York, NY
Artfully curated and socially minded, Gotham blends cannabis, fashion, fragrance, and décor all in a beautifully-designed a hybrid gallery and retail space by Cinema Vitae.



BODE

58 Hester Street, New York, NY
Sentimentality meets storytelling in the hand-crafted luxury of Bode's unique men's and womenswear creations. Each piece tells a story – from modern workwear silhouettes to female-centric traditions of quilting, mending, and appliqué shape.

PLAYLIST

A Brooklyn-based music curator specializing in funky pop and R&B, DJK8 returns with a fresh playlist for Shoppe Object's winter show. Here's a dozen of our favorites to accompany your morning commute (and make you feel like the main character of a movie with a really good soundtrack). Be sure to follow DJK8 on Instagram, where you can contact her to set the vibe for your next dinner party or your store's daily tunes. [@_DJK8_](#)

1. "Flashlights" – Mica Miller
2. "Jasmine" – Arlo Parks
3. "Fold" – Elbee, Leah Woods, Late Riser
4. "Mojo" – Claire Laffut
5. "Birdsong" – Rosie Lowe
6. "Sauce" – Remi Wolf
7. "Do U Wrong" – Levin Laly, Syd
8. "Afterparty – Mixtape" – Tink
9. "yes, and?" – Ariana Grande
10. "Practice Patience" – YKB
11. "Take My Picture" – GINGE
12. "And We Go Gentle" – Hiatus Kaiyote



EAT

SIP

SHOP

SHOPPE OBJECT *at* HIGH POINT MARKET

Shope Object – New York’s premier show featuring design-forward home decor, tabletop, textiles and accessories – returns to High Point this April 12-16 after a lauded launch in October 2023, bringing its curatorial magic to a permanent home on the third floor of Historic Market Square. Featuring over 100 select brands and makers embodying Shope Object’s reverence for the well-made, this must-see addition to your market itinerary prioritizes an environment of elevated discovery, with the best edit of innovative products from around the world.

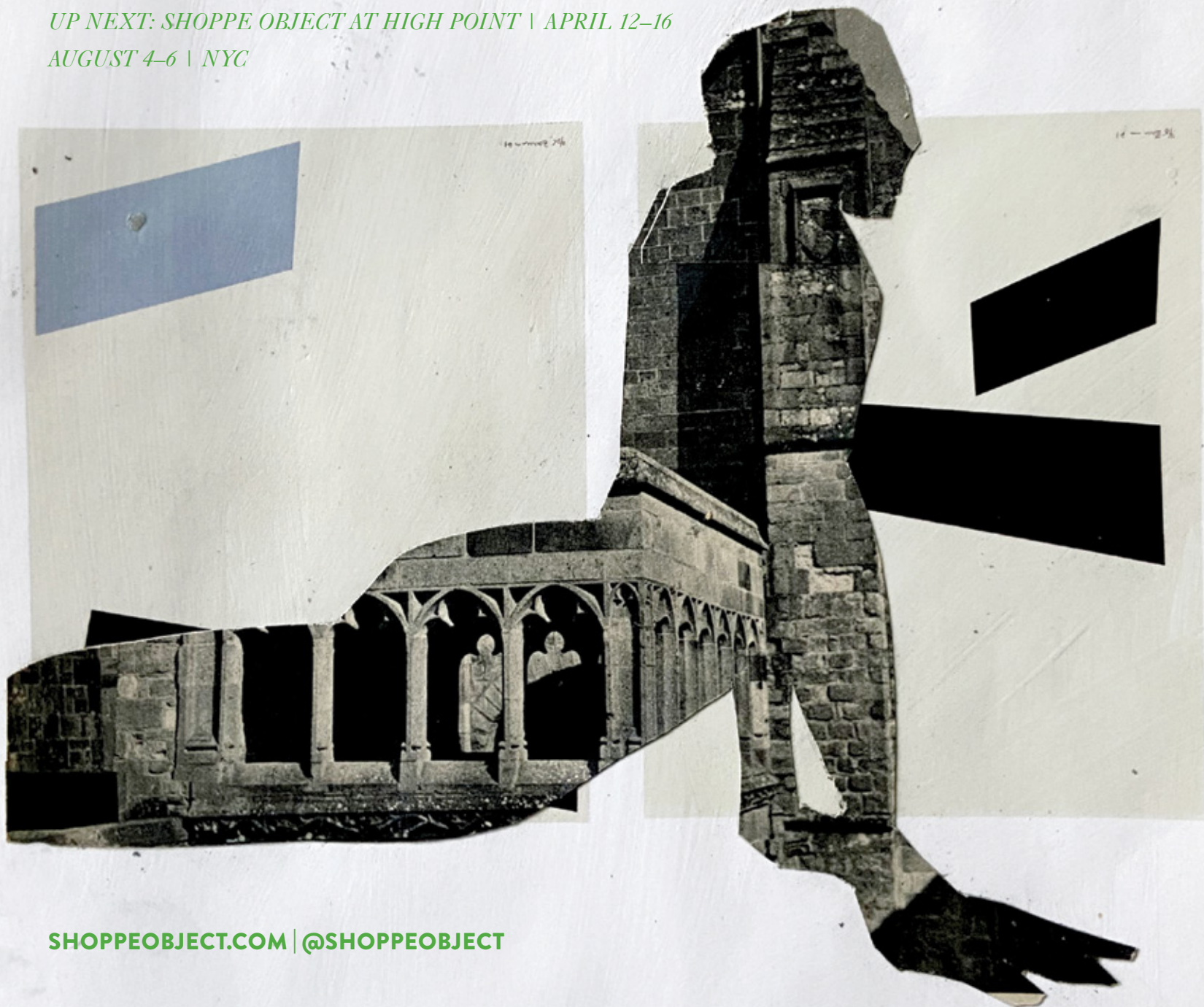
APRIL 12-16, 2024 | 9AM-6PM
HISTORIC MARKET SQUARE
3RD FLOOR



FEBRUARY 4-6 | NYC

UP NEXT: SHOPPE OBJECT AT HIGH POINT | APRIL 12-16

AUGUST 4-6 | NYC



SHOPPEOBJECT.COM | @SHOPPEOBJECT