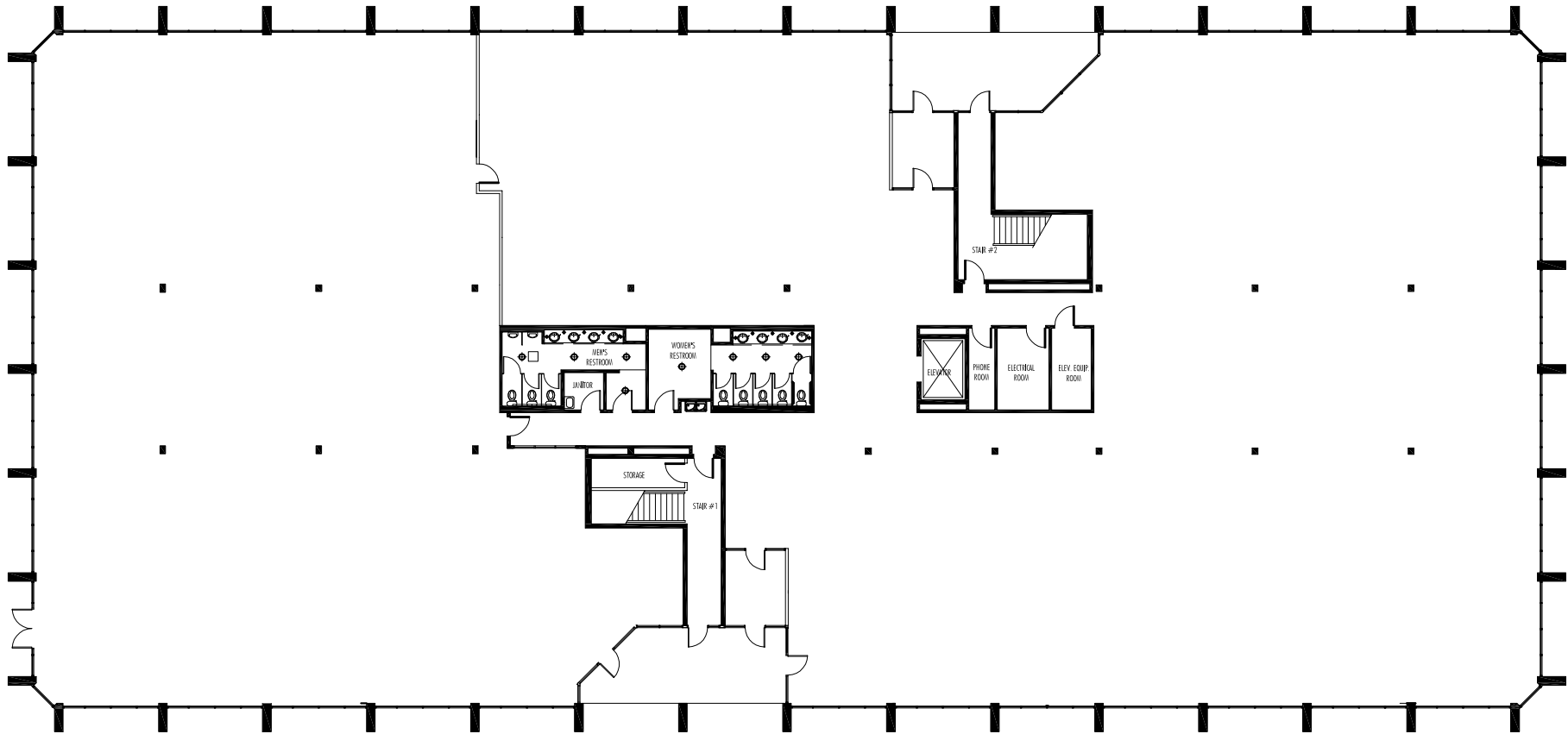




**DISTRICT**  
AT CHAMBLEE



0 5 10 20 40

\*This space has not been field verified by NELSON.



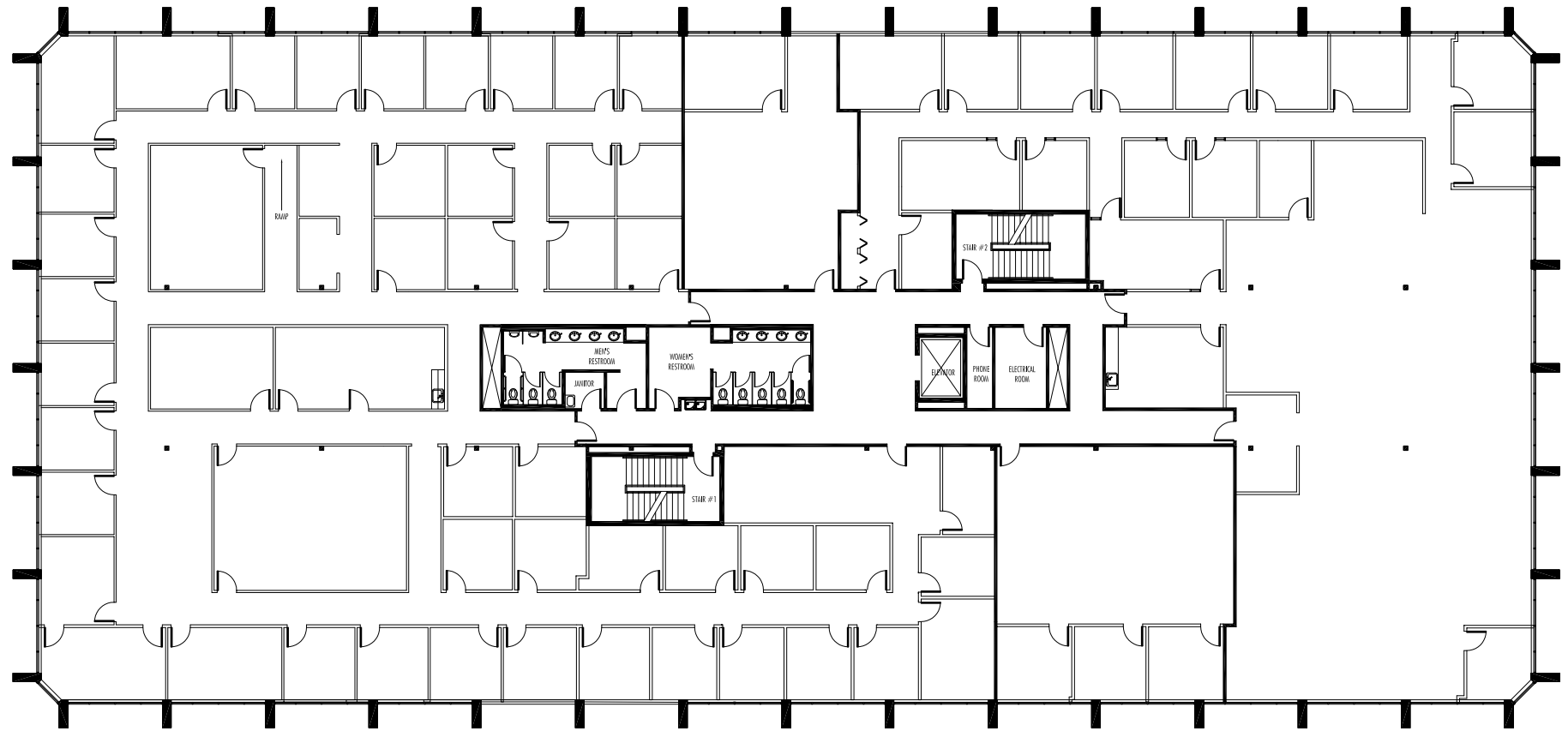
Peter McGuone (404) 923-1203  
Parker Nelson (404) 812-5089



**The Flats Bldg 2920 • 2920 Brandywine Rd • 1st Floor • 23,371 RSF Marketing Diagram**



# DISTRICT AT CHAMBLEE



0 5 10 20 40

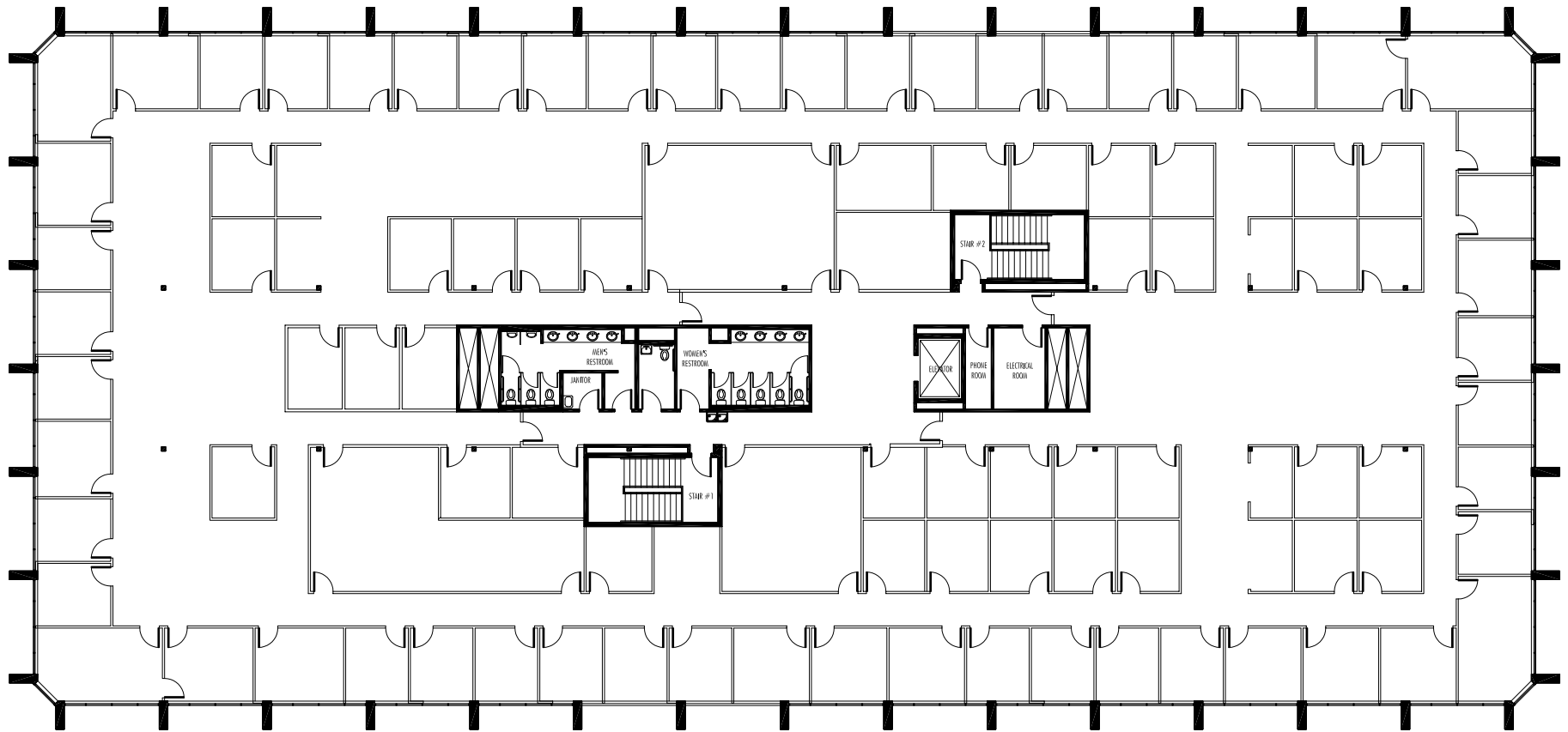
\*This space has not been field verified by NELSON.

**CBRE** Peter McGuone (404) 923-1203  
Parker Nelson (404) 812-5089

**NELSON** The Flats Bldg 2920 • 2920 Brandywine Rd • 2nd Floor • 24,913 RSF Marketing Diagram



# DISTRICT AT CHAMBLEE



0 5 10 20 40

\*This space has not been field verified by NELSON.



Peter McGuone (404) 923-1203  
Parker Nelson (404) 812-5089

**NELSON** The Flats Bldg 2920 • 2920 Brandywine Rd • Third Floor • 25,046 RSF Marketing Diagram